

# 10



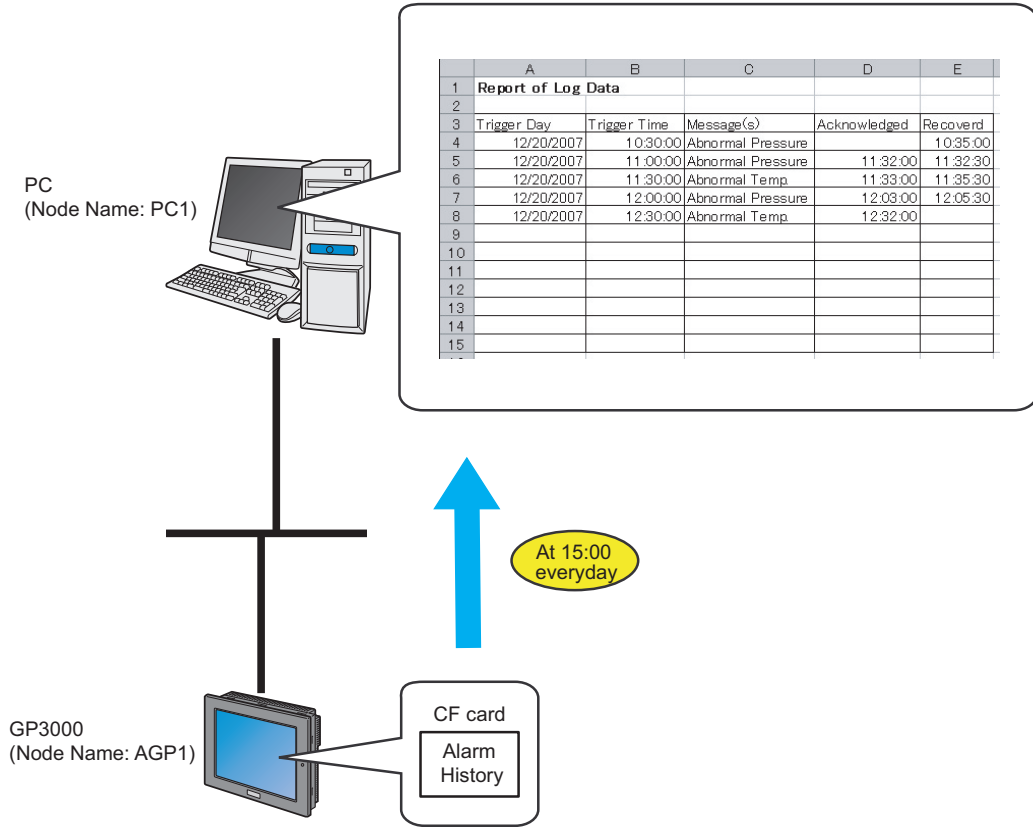
# Reading the display unit's log data

|      |  |       |
|------|--|-------|
| 10.1 | Uploading the display unit's log data..... | 10-2  |
| 10.2 | Setting Guide .....                        | 10-20 |
| 10.3 | Restrictions .....                         | 10-24 |

## 10.1 Uploading the display unit's log data

[Action Example]

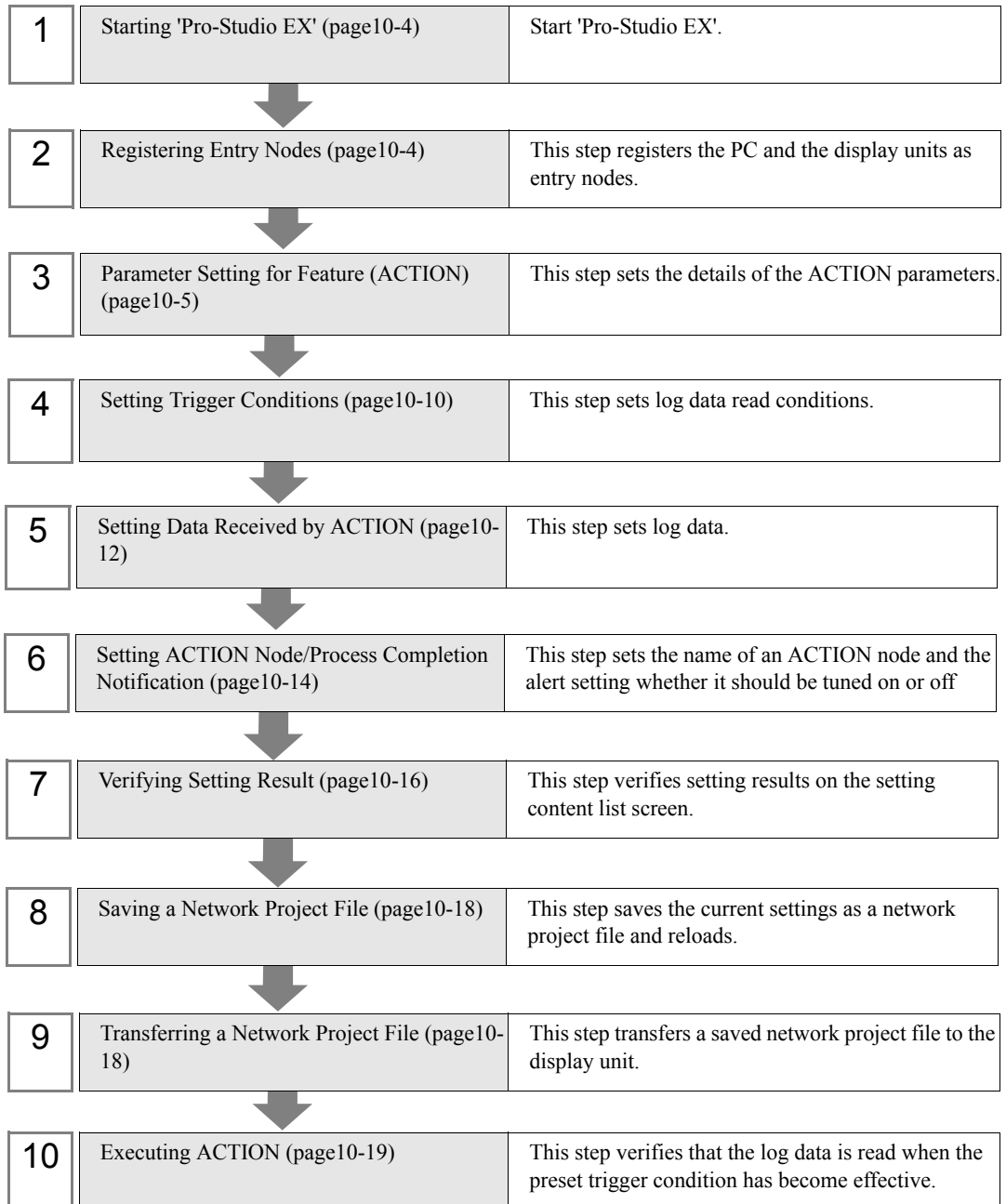
Every day at 15:00, write the display unit's alarm log data stored on the CF Card to CSV file



This section describes the setting procedures for executing the above action (ACTION) as an example.

**NOTE** • Refer to the 'GP-Pro Ex Reference Manual' for more details about alarms.

[Setting Procedure]



### 10.1.1 Starting 'Pro-Studio EX'

Start 'Pro-Studio EX'.

Refer to "3 Trial of Pro-Server EX" for more details on how to start.

### 10.1.2 Registering Entry Nodes

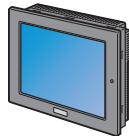
This step registers the PC and the display units connected with a network as nodes.

Refer to "33 Trigger Conditions" for more details on entry nodes.



Node Name :PC1

IP Address :192.168.0.1



Node Name :AGP1

IP Address :192.168.0.100

Device/PLC Information

Ex.

| Node         | Setup Item | Description   |
|--------------|------------|---------------|
| PC           | Node Name  | PC1           |
|              | IP Address | 192.168.0.1   |
| Display Unit | Type       | GP3000 Series |
|              | Node Name  | AGP1          |
|              | IP Address | 192.168.0.100 |

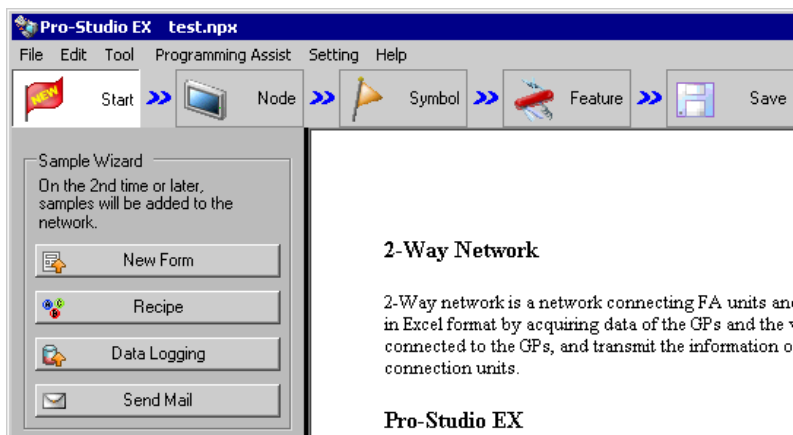
### 10.1.3 Parameter Setting for Feature (ACTION)

This step makes settings to write data in CSV files. (parameter settings)  
 Refer to "10.2 Setting Guide" for more details about ACTION parameter.

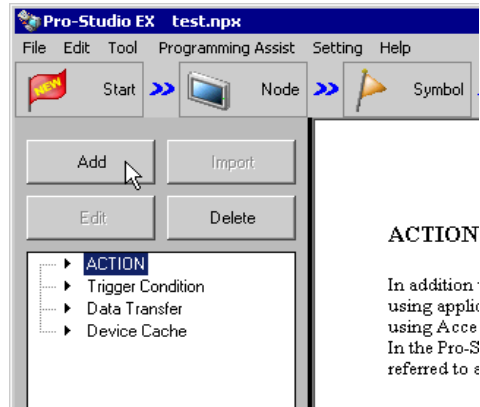
Ex.

| Setup Item             | Description   |
|------------------------|---|
| ACTION Name            | Log Data Upload   |
| Reading Source         | CF Card Backup Data   |
| GP Type                | SP-5B40/WinGP / SP-5B10 / GP4000/LT4000 Series / GP3000 Series / LT3000 |
| Select Read Data       | Alarm block 1   |
| Save File              | Desktop   |
| Saved File Name        | GP Log Data   |
| Zero Suppress          | Applied   |
| File Save Method       | Append Data   |
| Data is Currently Open | Do not save data  |
| Saving format          | CSV Format  |

1 Click the [Feature] icon on the status bar.

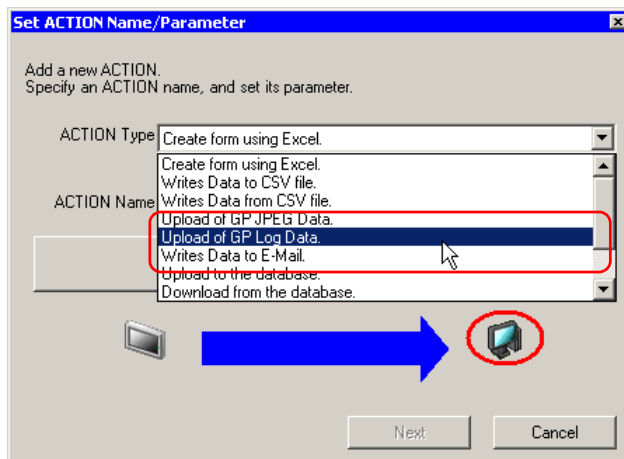


- 2 Select [ACTION] from the tree display on the left of the screen and click the [Add] button.

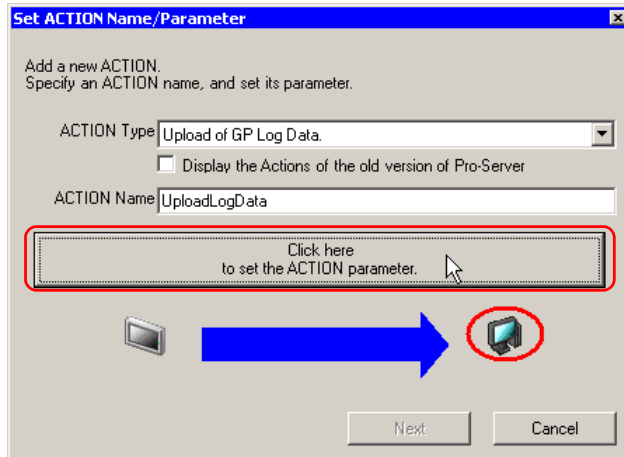


- 3 Click the [ACTION Type] list button, and select 'Upload of GP Log Data'. Then, enter the name of ACTION to set in the [ACTION Name] field. In this example, enter "UploadLogData".

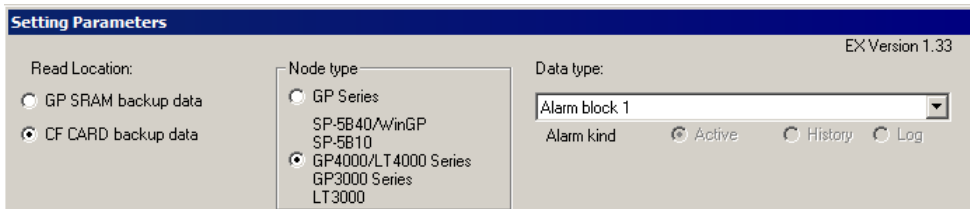
**NOTE** • [ACTION Name] can be an arbitrary name.



4 Click the [Click here to set ACTION parameter] button.

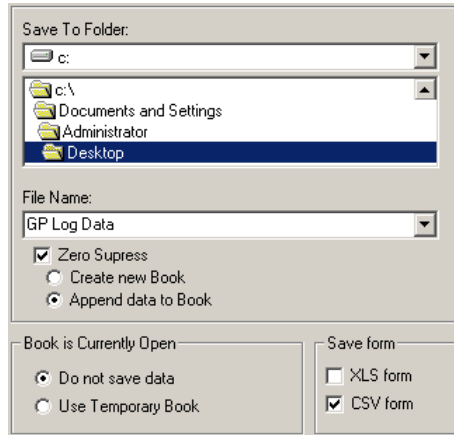


5 Set the read options.



| Setup Item    | Description  |
|---------------|--|
| Read Location | Check [CF CARD backup data].   |
| Node type     | Check [SP-5B40/WinGP / SP-5B10 / GP4000/LT4000 Series / GP3000 Series / LT3000]. |
| Data type     | Select [Alarm block1]  |

6 Set the save options.



| Setup Item             | Description               |
|------------------------|---------------------------|
| Save To Folder         | Desktop                   |
| File Name              | Enter [GP Log Data].      |
| Zero Suppress          | Check                     |
| Append Data to Book    | Check                     |
| Book is Currently Open | Check [Do not save data]. |
| Save form              | Check [CSV Form] only.    |

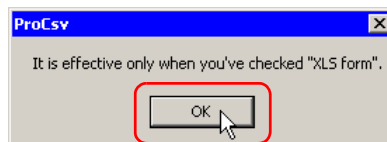
What is %Y%M%D%h%m%s?

Refers to the time when data has been written and this is saved in the format of "Year\_Month\_Date\_Hour/Minute/Second".

(Example) The file name for which data was written at 9:50:15 on December 15, 2007 becomes "2007\_12\_15\_095015".

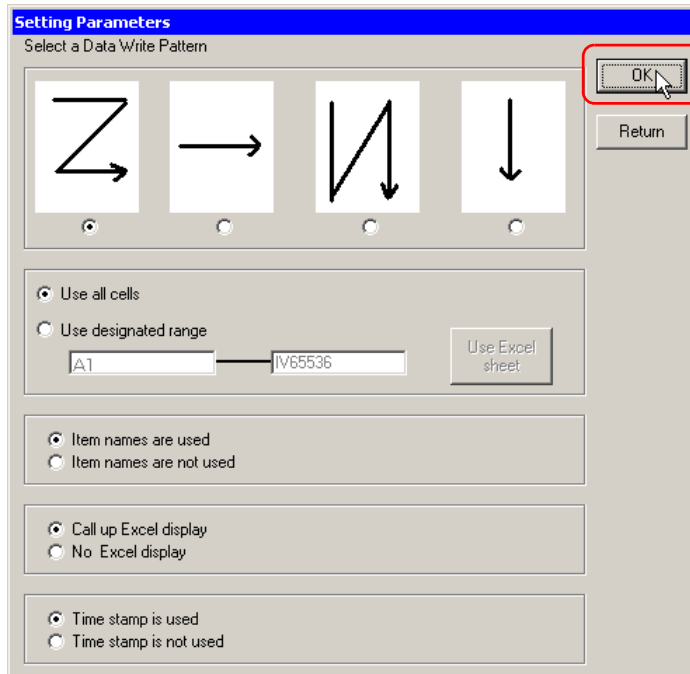
Refer to "37.1 Restrictions on Names" for more details.

7 Click the [OK] button.





8 Click the [OK] button without setting anything.



---

**NOTE**

- This setting screen is used only when reading in Excel format.
- 

This is the end of the feature (ACTION) settings.

## 10.1.4 Setting Trigger Conditions

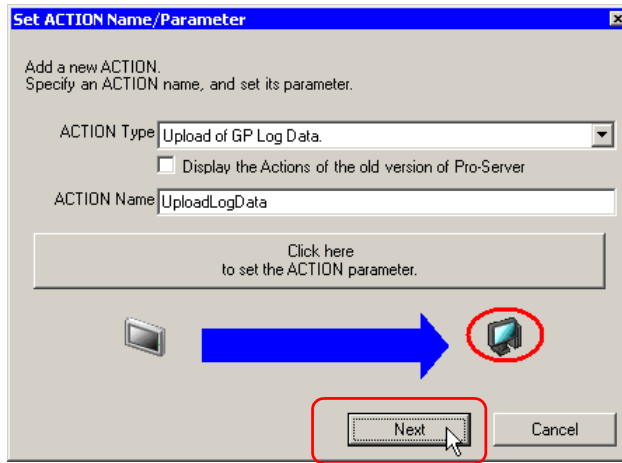
This step sets a trigger condition to read out device data.

Refer to "33 Trigger Conditions" for more details on trigger conditions.

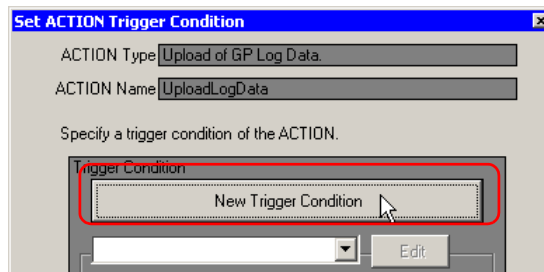
### Ex.

- Trigger Condition Name: Collect at constant intervals
- Trigger Condition : 15:00 daily

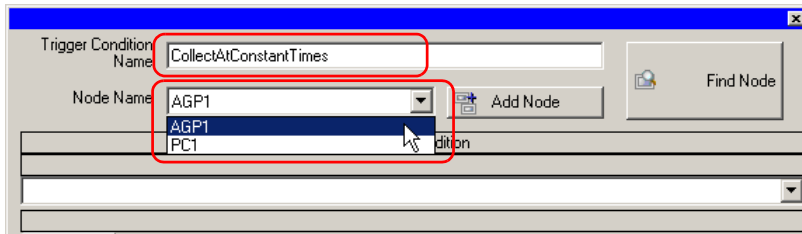
1 On the "Set ACTION Name/Parameter" screen, click the [Next] button.



2 Click the [New Trigger Condition] button.



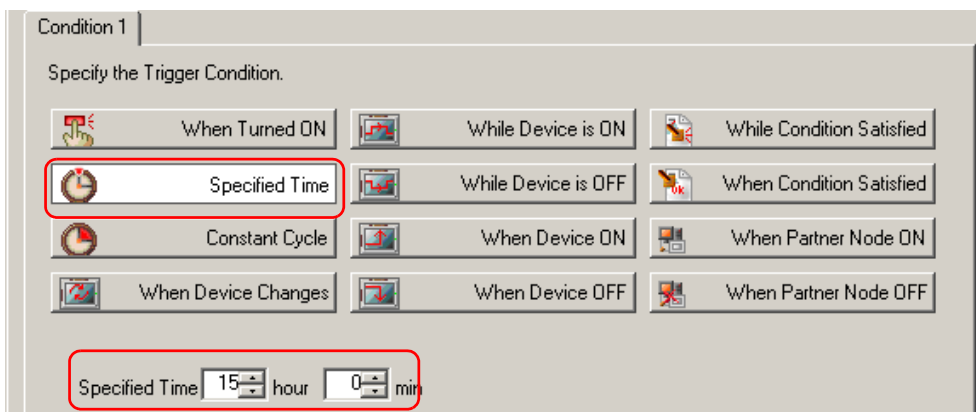
- 3 Enter the trigger condition name "CollectAtConstantTimes" in [Trigger Condition Name], and select "AGP1" in [Node Name] as a name of the data transfer source.



**NOTE** • Here, you are to specify the node having the device to be the trigger condition or having data to transfer.

☞ "33 Trigger Conditions"

- 4 Click the [Specified Time] button on the [Condition 1] tab, and enter "15:00" in [Specified Time]. Then click the [OK] button.



**NOTE** • You can also set trigger conditions by combining 2 different types of conditions ("And" condition or "Or" condition).

☞ "33 Trigger Conditions"

This is the end of trigger condition settings.

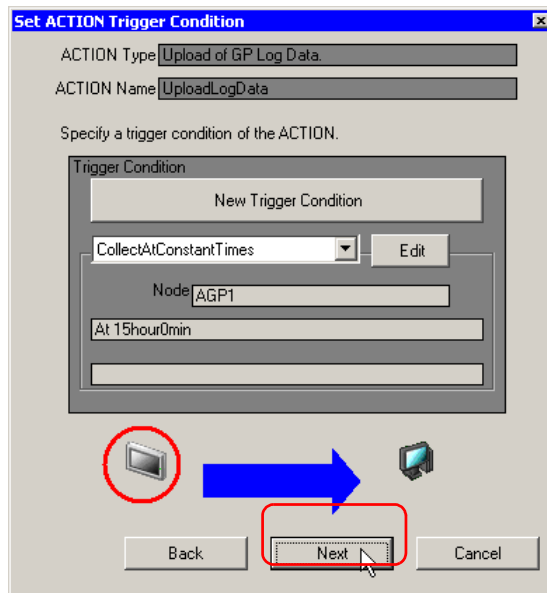
## 10.1.5 Setting Data Received by ACTION

Specify the data to be transferred during operation of the ACTION.

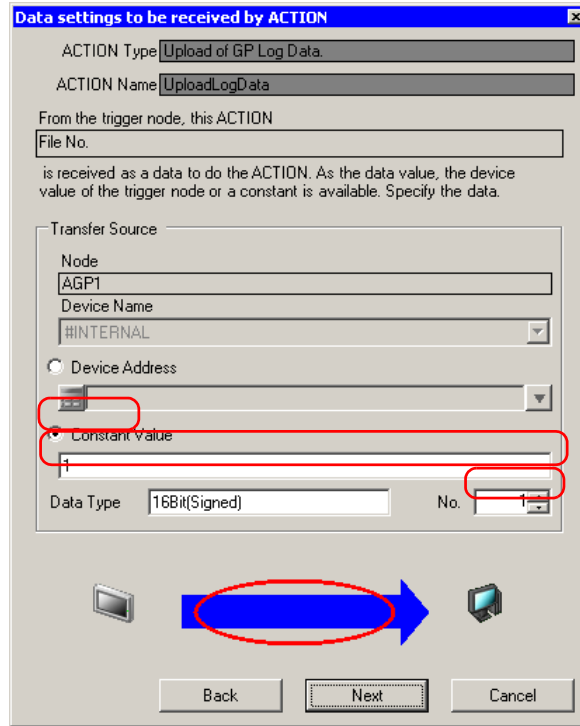
Ex.

- Constant value to transfer: 1

1 On the "Set ACTION Trigger Condition" screen, click the [Next] button.



- 2 After clicking [Constant Value], enter "1" in the text box for the constant value to transfer and "1" in [Number].



**NOTE** • You can transfer stored values as data by specifying a symbol or a device address.

This is the end of the setting of data received by ACTION.

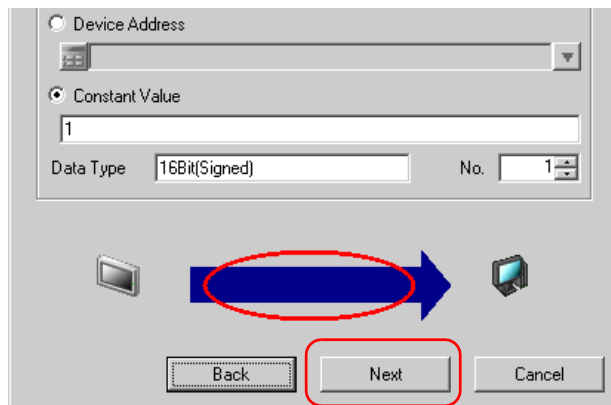
## 10.1.6 Setting ACTION Node/Process Completion Notification

This step sets the name of an ACTION node and the alert setting whether it should be tuned on or off when the ACTION is completed.

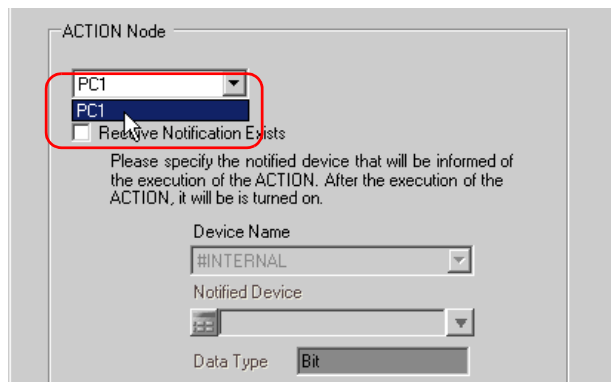
### Ex.

- ACTION Node : PC1
- Receive Notification: OFF

1 On the "Set Data Received by ACTION" screen, click the [Next] button.



2 Click the list button of [Action Node] and select "PC1" as a node where ACTION operates. Also, clear the check if [Receive Notification Exists] has been checked.



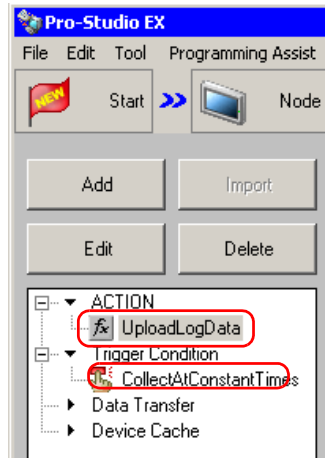
### NOTE

- When "Receive Notification" is turned on, the specified bit device will be turned on when the ACTION is completed. This can be used as the trigger condition of the subsequent ACTION when you want to execute two or more ACTIONS sequentially.

☞ "33 Trigger Conditions"

3 Click the [End] button.

The "ACTION Node/Process Completion Notification Settings" screen will disappear. On the left of the screen, the name of ACTION and trigger condition you set will appear.

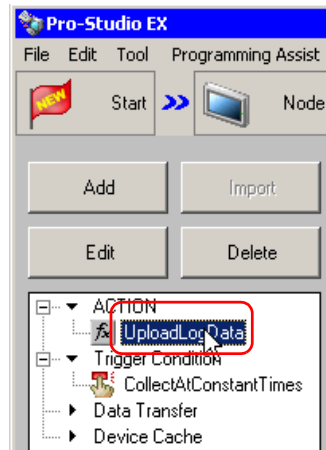


This is the end of the settings of the ACTION node and process completion notification.

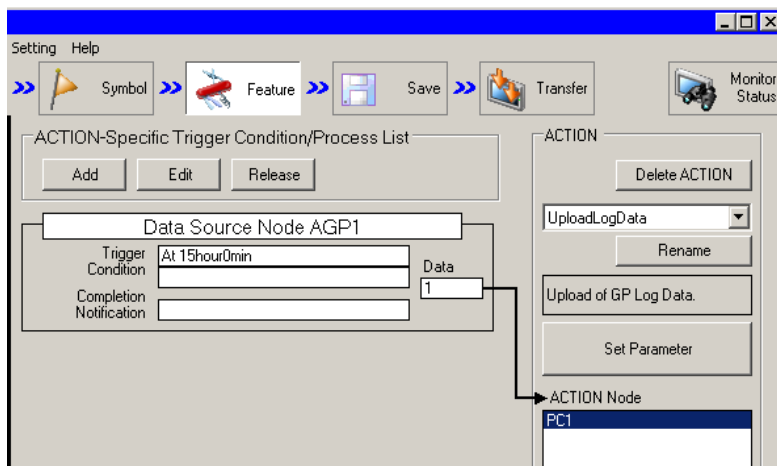
## 10.1.7 Verifying Setting Result

This step verifies setting results on the setting content list screen.

- 1 Select the ACTION name "UploadLogData" from the tree display on the left of the screen.

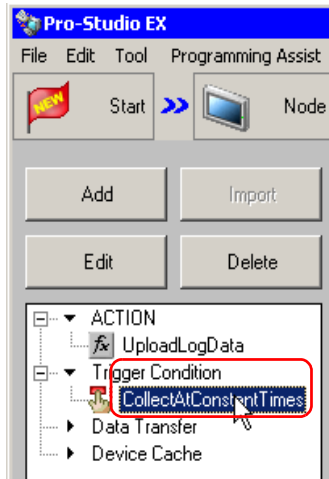


Confirm that the setting content appears on the right of the screen.

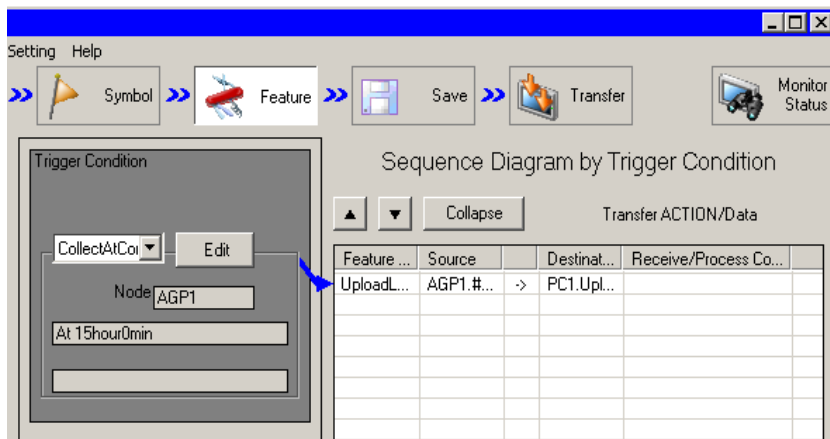




- 2 Select the trigger condition name "CollectAtConstantTimes" from the tree display on the left of the screen.



Confirm that the setting content appears on the right of the screen.



This is the end of the verification of the settings.

## 10.1.8 Saving a Network Project File

This step saves the current settings as a network project file and reloads to 'Pro-Server EX'.

Refer to "25 Saving" for details about saving a network project file.

- 
- IMPORTANT**
- 'Pro-Server EX' reads a created network project file, and then executes Action according to the settings in the file. The settings therefore need be saved in the network project file.
  - Be sure to reload the network project file to "Pro-Server EX" If not, ACTION will not work.
- 

### Ex.

- Path of network project file : Desktop\gplog\_update.npx
- Title : Upload of GP log data

## 10.1.9 Transferring a Network Project File

This step loads a saved network project file to 'Pro-Server EX' and then transfers to entry nodes.

Refer to "26 Transferring" for details about transferring a network project file.

- 
- NOTE**
- Be sure to transfer a network project file. If not, ACTION will not work.
-

### 10.1.10 Executing ACTION

This step verifies that enabling a trigger condition activates ACTION, opens a CSV file (file name: "GP Log Data.csv"), and then writes the log data of display unit.

|    | A                         | B            | C                 | D            | E        |
|----|---------------------------|--------------|-------------------|--------------|----------|
| 1  | <b>Report of Log Data</b> |              |                   |              |          |
| 2  |                           |              |                   |              |          |
| 3  | Trigger Day               | Trigger Time | Message(s)        | Acknowledged | Recoverd |
| 4  | 12/20/2007                | 10:30:00     | Abnormal Pressure |              | 10:35:00 |
| 5  | 12/20/2007                | 11:00:00     | Abnormal Pressure | 11:32:00     | 11:32:30 |
| 6  | 12/20/2007                | 11:30:00     | Abnormal Temp     | 11:33:00     | 11:35:30 |
| 7  | 12/20/2007                | 12:00:00     | Abnormal Pressure | 12:03:00     | 12:05:30 |
| 8  | 12/20/2007                | 12:30:00     | Abnormal Temp     | 12:32:00     |          |
| 9  |                           |              |                   |              |          |
| 10 |                           |              |                   |              |          |
| 11 |                           |              |                   |              |          |
| 12 |                           |              |                   |              |          |
| 13 |                           |              |                   |              |          |
| 14 |                           |              |                   |              |          |
| 15 |                           |              |                   |              |          |

**NOTE**

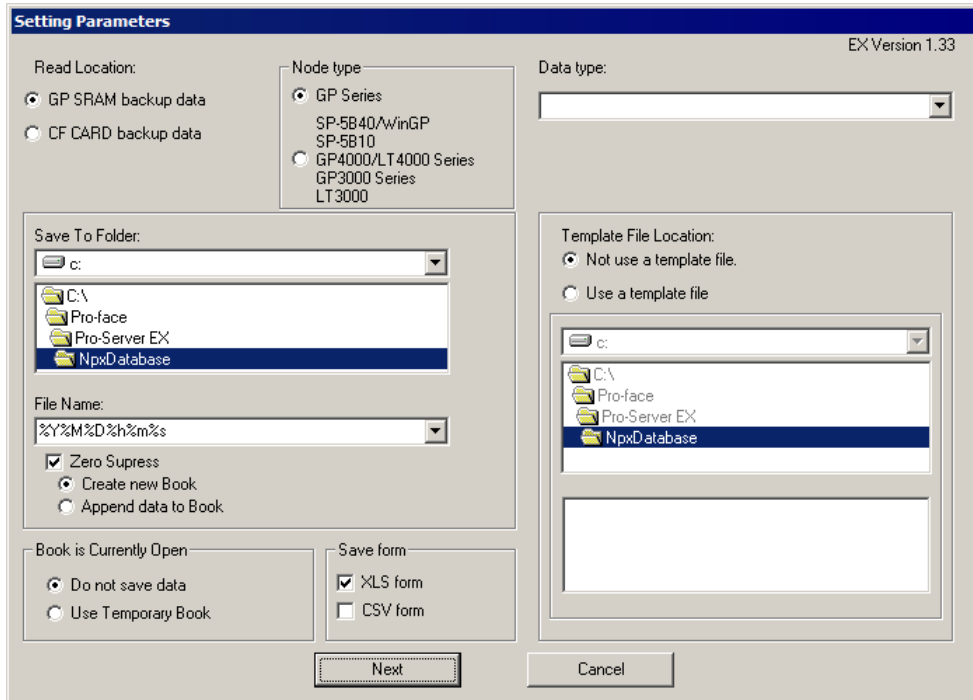
- If error occurs, you can check the log in the Log Viewer. Refer to "28.5 Monitoring System Event Logs" for more details.
- When output to Excel, the date uses the "20yy/mm/dd" (or "19yy/mm/dd") format. However, when the CSV file on the CF card does not use the "yy/mm/dd" date format, the date format will be different.

This is the end of the explanation of this ACTION.

## 10.2 Setting Guide

This section explains how to set the parameters of ACTION.

### ■ Detailed Settings

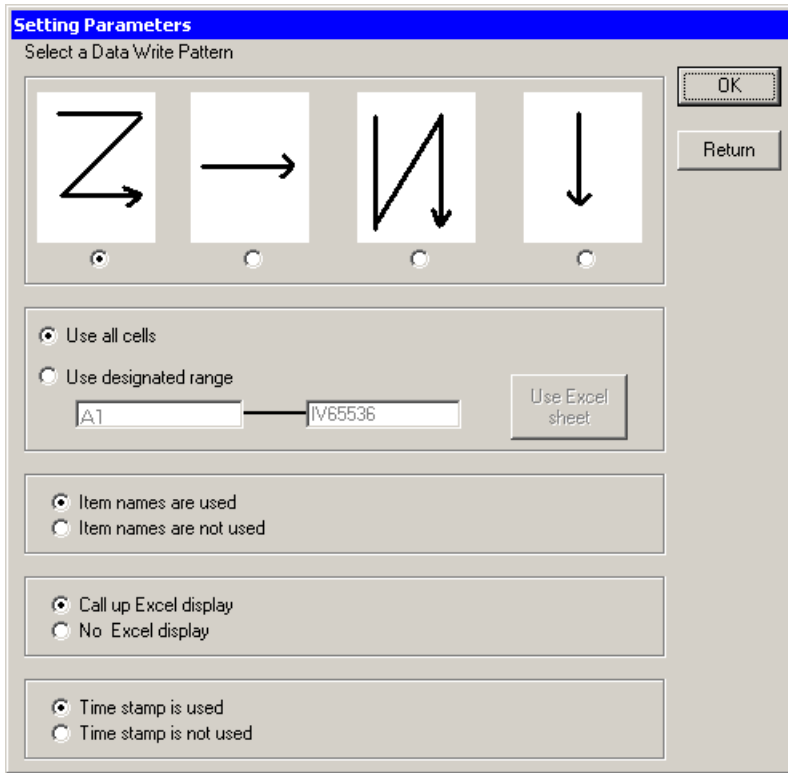


| Setup Item    | Description   |
|---------------|---|
| Read Location | Select the location of data to upload. <ul style="list-style-type: none"> <li>• GP SRAM backup data<br/>Read data on the display unit's SRAM.</li> <li>• CF CARD backup data<br/>Read data on the display unit's CF/SD Card.</li> </ul> |
| Node type     | Select the display unit model to read from.   |

| Setup Item             | Description  |
|------------------------|--|
| Data type              | <p>Select the data to read.</p> <ul style="list-style-type: none"> <li>• For GP Series node <ul style="list-style-type: none"> <li>Logging data</li> <li>Trend data</li> <li>Sampling data</li> <li>Alarm history data</li> <li>Alarm log data</li> <li>Alarm block 1</li> <li>Alarm block 2</li> <li>Alarm block 3</li> <li>Alarm block 4</li> <li>Alarm block 5</li> <li>Alarm block 6</li> <li>Alarm block 7</li> <li>Alarm block 8</li> </ul> </li> <li>• For SP-5B40/WinGP, SP-5B10, GP4000/LT4000 Series, GP3000 Series, LT3000 node <ul style="list-style-type: none"> <li>Alarm block 1</li> <li>Alarm block 2</li> <li>Alarm block 3</li> <li>Alarm block 4</li> <li>Alarm block 5</li> <li>Alarm block 6</li> <li>Alarm block 7</li> <li>Alarm block 8</li> <li>Sampling data</li> <li>GP-PRO/PB Trend graph data (compatible)</li> <li>GP-PRO/PB Sampling data (compatible)</li> <li>GP-PRO/PB Logging data (compatible)</li> </ul> </li> </ul> |
| Save To Folder         | Specify the save destination folder.   |
| File Name              | Specify the saved file name. %Y%M%D%h%m%s (Year/Month/Day/Hour/Minute/Second) is set as default. File name can be specified indirectly. Refer to "37.1 Restrictions on Names" for more details.  |
| Zero Suppress          | <p>If you check this option, no zeros are supplemented in the save file name even though the folder name includes any of "%M%D%h%m%s" (month, day, hour, minute, second) data.</p> <p>If you do not check this option, zeros are supplemented in the file name only when the folder name includes any of "%M%D%h%m%s" (month, day, hour, minute, second) and the numeric value is 1 digit.</p> <p>The default is "checked".</p>  |
| File Save Method       | <p>Select the file save method from the following options.</p> <ul style="list-style-type: none"> <li>• Create new Book</li> <li>• Append data to Book</li> </ul> <p>When using the fixed name to specify the save file name, the data will be written in Sheet2.</p>  |
| Book is Currently Open | <p>Check this option when books with the same file name is open when writing data. Select either [Do not save data] or [Use Temporary Book].</p> <p>When you check [Do not save data], the written data will not be saved and deleted. If you check [Use Temporary Book], the written data will be temporarily saved under a separate filename (The temporary filename will be "%Y%M%D%h%m%s.xls").</p>  |
| Save form              | You can select Excel file format (.xls) or text file format (.csv). You can select both file formats. In that case, files in each format will be created.  |

| Setup Item             | Description   |
|------------------------|---|
| Template File Location | <p>Specify if you use the template or not.<br/>When you specify using the template, specify the drive folder of the template and the template file name.</p> <p><b>NOTE</b></p> <ul style="list-style-type: none"><li>• The specified template file should contain only Sheet1.</li><li>• When you specify CF card as the source to be read, you need to specify the uploading file No.</li></ul> |

■ Detailed Settings (Write Settings)



| Setup Item                  | Description  |
|-----------------------------|--|
| Select a Data Write Pattern | Set the write direction of the read data.  |
| Write Data Range            | Select either [Use all cells] or [Use designated range]. When you select [Use designated range], set the cell range within which data will be written. |
| Item name.                  | Select either [Item names are used] or [Item names are not used]. When you select [Item names are used], the log data item name will be entered.       |
| Call up Excel display       | Select either [Call up Excel display] or [No Excel display].   |
| Time Stamp                  | Select either [Time stamp is used] or [Time stamp is not used]. When you select [Time stamp is used], the time when data is written will be entered.   |

**NOTE** • When CSV is selected as the data save format, the [Template] and [Data write] patterns cannot be selected. Settings are fixed to [Data write]:[Z] type, [Use all cells], [Item names are not used], and [Time Stamp is not used].

## 10.3 Restrictions

### ■ Restrictions on reading Alarm and Sampling Data on the CF Card

- In GP-Pro EX, use "yy/mm/dd" for the date format. When the CSV file on the CF card does not use "yy/mm/dd" for the date format, the wrong date may be output.  
When output to Excel, the date uses the "20yy/mm/dd" (or "19yy/mm/dd") format.
- When using a version of GP-Pro EX before V3.12, or a version of Pro-Server EX before V1.32, do not use the [Set number of files in destination folder on external storage] option in GP-Pro EX. You cannot read files stored [Alarm] or [SAMP\*\*] sub-folders.
- If [Multiple Line Message Output (Save Alarm to CSV)] is enabled in GP-Pro EX alarm settings, use the [Save Form] setting to change the output format. If [Save Form] is set to [XLS form], each line of a message with line breaks is output to a different cell. If [Save Form] is set to [CSV form], a message with line breaks is output to a single cell.  
If [Multiple Line Message Output (Save Alarm to CSV)] is disabled, the message up to the line break only is saved to the CSV file.

### ■ Restrictions on reading Alarm and Sampling Data in SRAM

- Regardless of the date format defined in GP-Pro EX, dates are handled with the "yy/mm/dd" format. When outputting to Excel, the date format is "20yy/mm/dd" (or "19yy/mm/dd").
- If [Multiple Line Message Output (Save Alarm to CSV)] is enabled in GP-Pro EX alarm settings, use the [Save Form] setting to change the output format. If [Save Form] is set to [XLS form], each line of a message with line breaks is output to a different cell. If [Save Form] is set to [CSV form], a message with line breaks is output to a single cell.  
If [Multiple Line Message Output (Save Alarm to CSV)] is disabled, the message up to the line break only is saved to the CSV file.

### ■ Item names when reading Sampling Data to Excel

- Select the [Item names are not used] check box to output GP-Pro EX sampling settings without the first row and first column in the [Display/Save in CSV] tab. Accordingly, if the [Item Name (Vertical)] check box is cleared in GP-Pro EX, the [Date] column becomes the first column and the date is not output.  
If the [Item Name (Vertical)] check box is cleared, select the [Item names are used] check box.