

With GP-Pro EX

INDEX

01. Update to new models and increase production efficiency with the latest functions
02. Breeze through detailed plan changes without any errors
03. Visualize devices to improve production efficiency
04. Distribute recipes and screen data from a Web browser on a computer
05. Debug immediately at the production site without bringing a computer

■ For Production Technology Personnel

Improving Production Efficiency Master Edition



SECTION

01

Update to new models and increase production efficiency with the latest functions

Solution Rating



Q

QUESTION <<<

Can I utilize my current assets without any hassle?

A

Pro-face's solution <<<

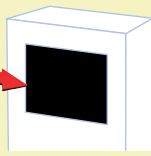
The latest displays come in the same sizes as previous models and data conversion allows past screen data to be used as it is.

Pro-face offers THE ABILITY TO USE OLD ASSETS HASSLE-FREE

Panel cutout dimensions are the same as those for previous models

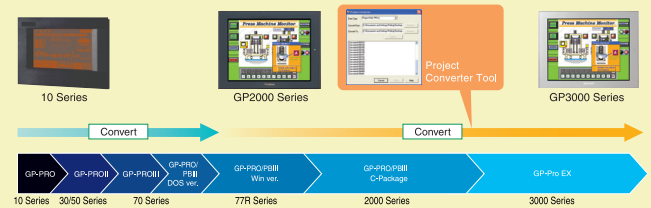


GP3000



Upgrade without changing panel cutout dimensions

Reuse old screen data

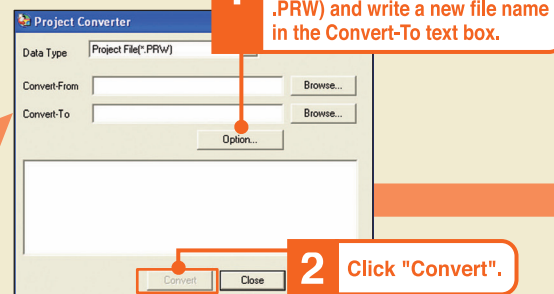


*Data from the GP-PRO/PBIII for Windows and more recent models can be converted directly using the GP-Pro EX Project Converter.

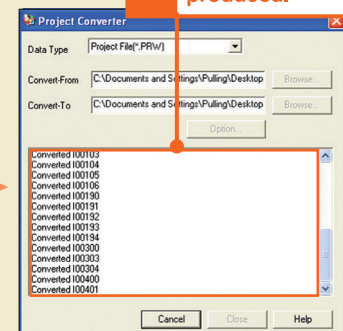
Easy Setup

Project Converter

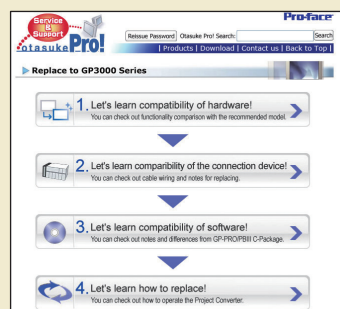
Launch Project Converter.



3 A conversion log file is produced.



Upgrade Information Website



For information regarding restrictions and compatibility between the GP-PRO/PBIII for Windows and GP-Pro EX, refer to "Otasuke Pro!" the Pro-face support Website.



<http://www.pro-face.com/otasuke/qa/gp3000/replace/index.htm>

02 Breeze through detailed plan changes without any errors

Solution Rating



90%

Q

QUESTION ≪≪

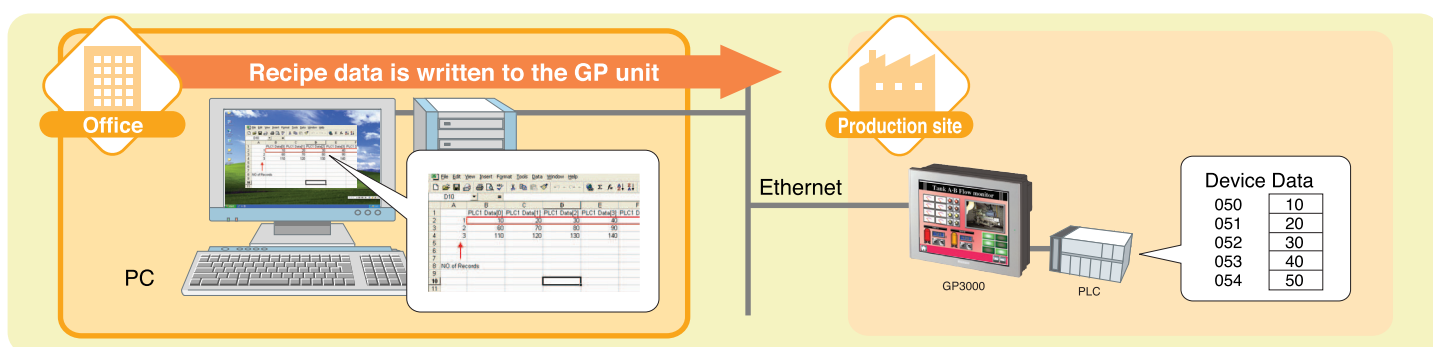
Do your operators frequently make input errors because operating instructions are issued in document format for production sites where plans change frequently?

A

Pro-face's solution ≪≪

Pro-Server EX allows operating instructions, production plans, and other data to be changed from the office in real time.

Pro-face offers AUTOMATED OPERATING INSTRUCTIONS



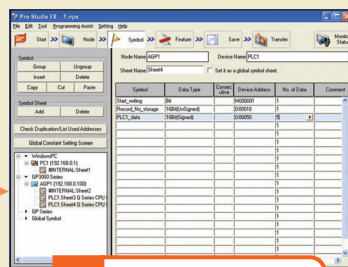
Adjusting Pro-Server EX Settings

Distributing Recipes

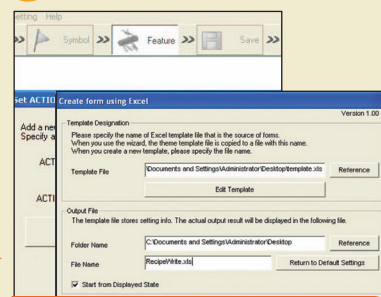
(Instructions of the operation are delivered automatically.)

	A	B	C	D	E	F
1						
2			10	20	30	40
3			60	70	80	90
4			110	120	130	140
5						
6						

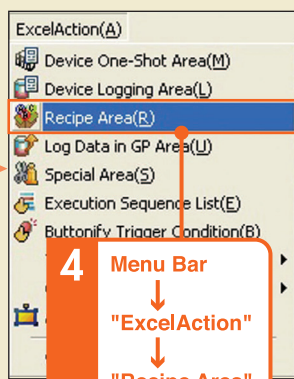
1 Create and save recipe data in Microsoft Excel.



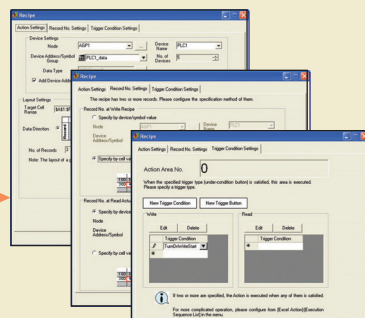
2 Register symbols.



3 Specify the recipe sheet and the output file.



4 Menu Bar
↓
"ExcelAction"
↓
"Recipe Area"



5 Complete settings in the Action Settings, Record No. Settings and Trigger Condition Settings tabs.

Network project is saved to the GP unit itself and transferred.

*Pro-Server EX must be purchased separately.

03

Visualize devices to improve production efficiency

Solution Rating

★★★★★ 80%

Q

QUESTION ≪≪

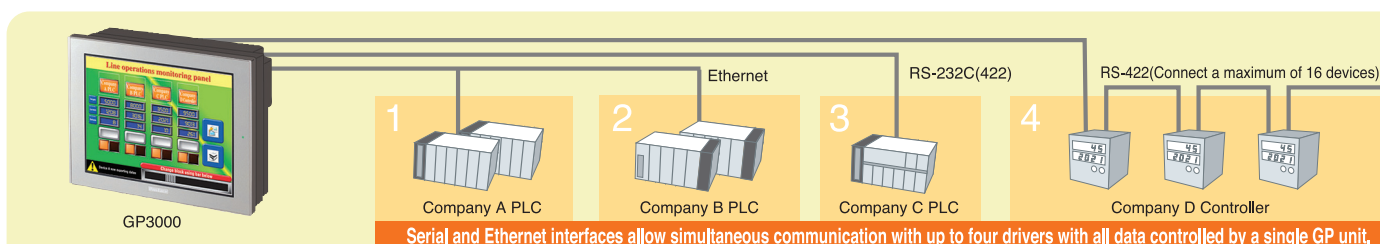
Is there some way to get an understanding of device organization to identify areas for improvement?

A

Pro-face's solution ≪≪

Pro-face displays provide visualization and central control of multiple devices. They support a range of communications drivers that enable connection without programming.

Pro-face offers VISUALIZATION OF DEVICES



*Sample parts can be used to facilitate complicated settings and reduce man-hours.

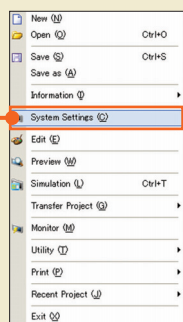


<http://www.pro-face.com/otasuke/download/sample>

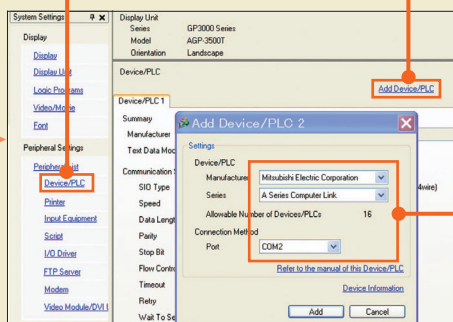
Easy Setup

Multi-protocol

1 Menu Bar
↓
"Project"
↓
"System Settings"



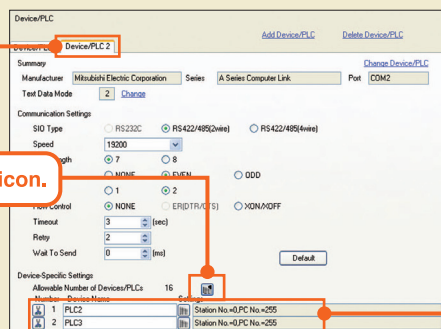
2 Select "Device / PLC".



3 Select "Add Device / PLC".

4 Complete the Device / PLC settings.

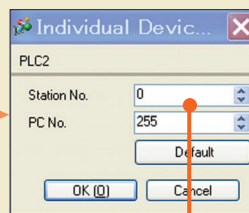
5 Select the "Device / PLC 2" tab.



6 Click the "Add Device" icon.



8 Complete the settings for the additional PLC.



7 Adjust settings for each device.



For details regarding supported drivers check out

http://www.pro-face.com/product/soft/gppro_ex/driver2.htm

SECTION

04 Distribute recipes and screen data from a Web browser on a computer

Solution Rating

★★★★★ 90%

Q

QUESTION ≪≪

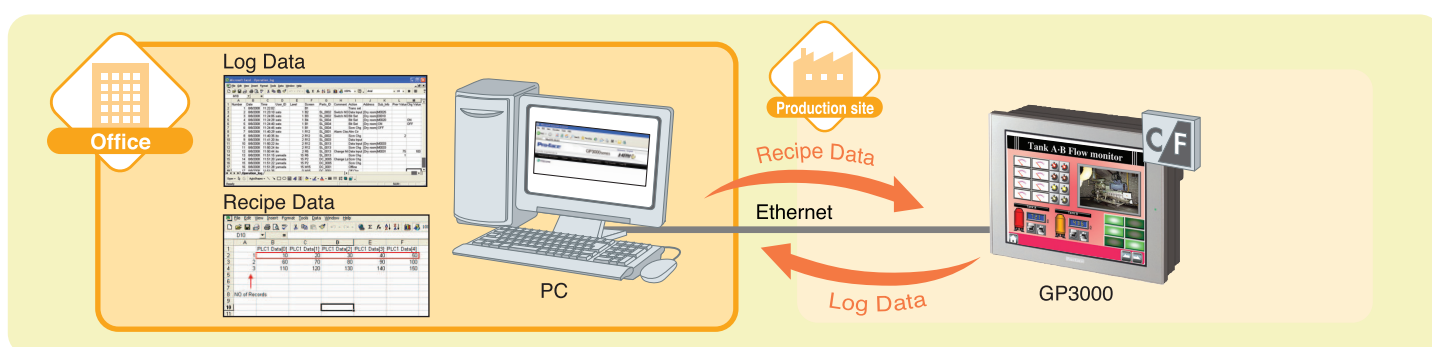
Do you think that introducing a system to change display data and screens from the office is too expensive?

A

Pro-face's solution ≪≪

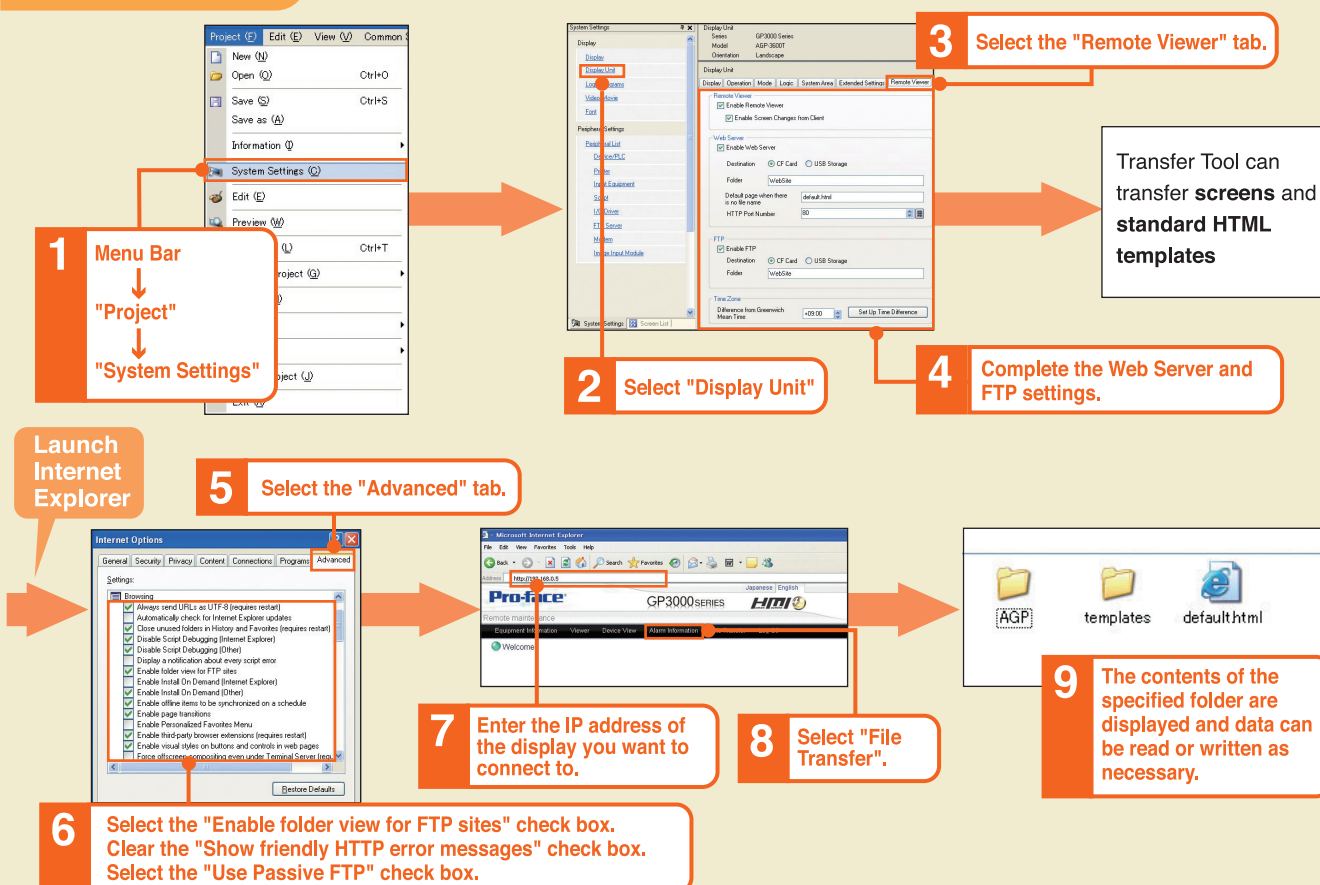
Using a web server lets you easily read and write logs, recipes, and other data from a regular Web browser to a GP unit CF card.

Pro-face offers DATA EDITING FROM A WEB BROWSER



Easy Setup

Web Server



05

Debug immediately at the production site without bringing a computer

Solution Rating

★★★★★ 100%

Q

QUESTION ≪≪

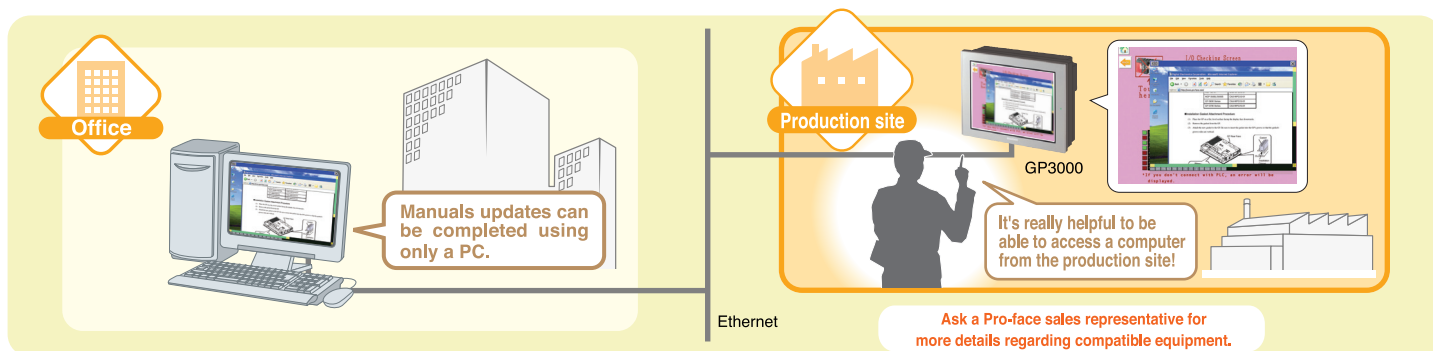
Do you have to go all the way to the office to get a computer when there is a malfunction or when you need to debug?

A

Pro-face's solution ≪≪

Because you can access the office computer from the production site and display and operate ladder tools and manuals, downtime is reduced.

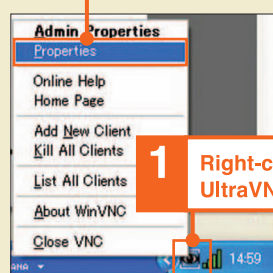
Pro-face offers PROBLEM SOLVING USING ONLY A DISPLAY



Easy Setup

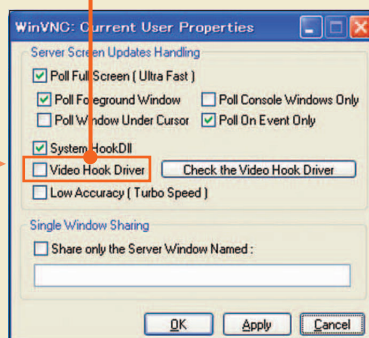
Displaying PC Images on a GP Unit

2 Select "Properties".

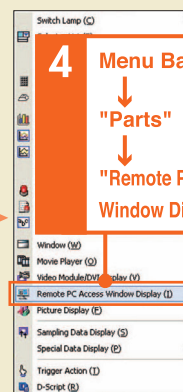


1 Right-click the UltraVNC icon.

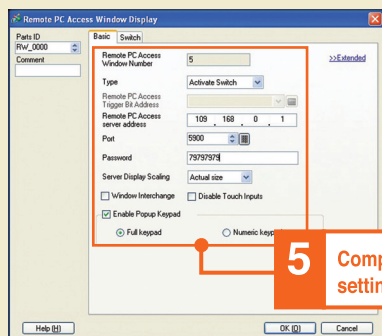
3 Clear the "Video Hook Driver" check box.



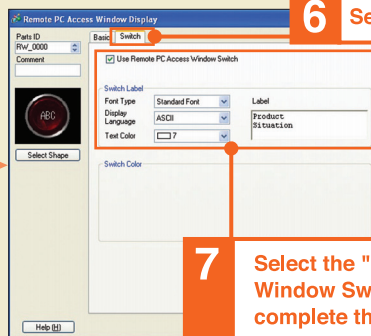
Launch GP-Pro EX

4 Menu Bar
↓
"Parts"
↓
"Remote PC Access Window Display"

5 Complete the basic settings.



6 Select the "Switch" tab.



7 Select the "Use Remote PC Access Window Switch" check box and complete the switch settings.

Screen Transfer

It is necessary to purchase a separate license in order to use the RPA function. UltraVNC must be installed. UltraVNC is included on the install CD.