

With GP-Pro EX

## INDEX

01. Distribute operating instructions using USB flash drive you have
02. Communicate operating instructions automatically from the office
03. Collect production data in real time without leaving the office
04. Automatically create production status reports
05. Keep informed of progress on the factory floor without leaving the office

■ For Production Management Personnel

# Automated Process Changeover Data Collection Master Edition



## 01

## Distribute operating instructions using USB flash drive you have

Solution Rating



90%

Q

## QUESTION «««

Do you think that you need to build a network in order to distribute operating instructions as data?

A

## Pro-face's solution «««

GP units with USB, allowing operating instructions to be distributed using only an off-the-shelf USB flash drive. What's more, data can also be distributed by operating a GP unit screen.

## Pro-face offers AUTOMATIC DISTRIBUTION VIA USB FLASH DRIVE



Production site

USB front cable  
(CA5-USBEXT-01, sold separately)

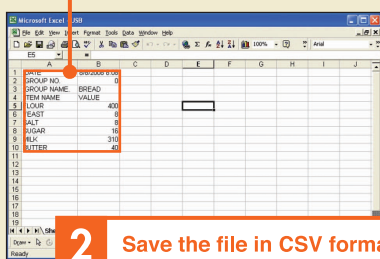
USB flash drive

Using a USB front cable means there is no need to open any panels.

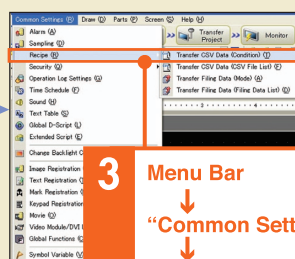
## Easy setting procedures

## Distributing Recipes via USB

1 Create recipe data in Microsoft Excel.

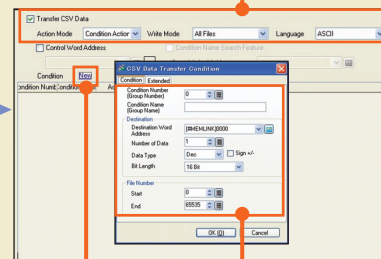


2 Save the file in CSV format on a USB flash drive.



3 Menu Bar  
↓  
"Common Settings"  
↓  
Recipe  
↓  
"Transfer CSV Data (Condition)"

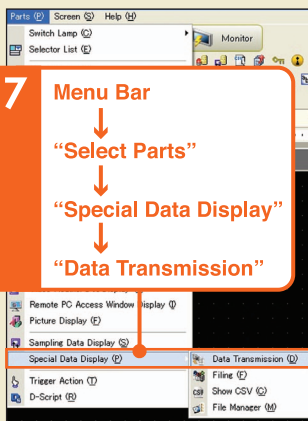
4 Select the Transfer "CSV Data check box", and select an "Action Mode", "Write Mode", and "Language".



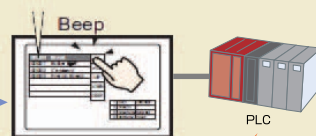
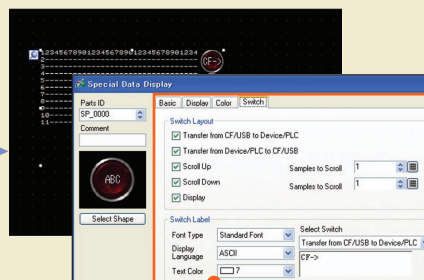
5 Click "New".

6 Set the CSV data transfer conditions.

7 Menu Bar  
↓  
"Select Parts"  
↓  
"Special Data Display"  
↓  
"Data Transmission"



8 Double-click the positioned special data display, and complete the "Display", "Color", and "Switch" settings.



D100 400  
D101 8  
D102 8

## SECTION

# 02 Communicate operating instructions automatically from the office

Solution Rating



90%

Q

## QUESTION ≪≪

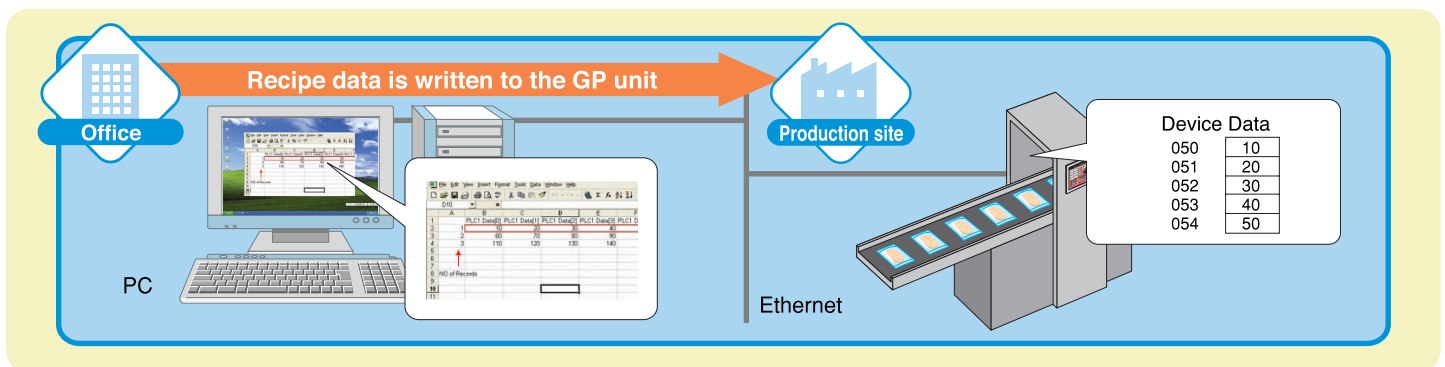
Are your operators making lots of input errors because operating instructions are issued in document format for production sites where plans change frequently?

A

## Pro-face's solution ≪≪

Pro-Server EX communicates operating instructions, production plans, and other data created in the office directly to the production site.

## Pro-face offers AUTOMATED OPERATING INSTRUCTIONS



## Easy setting procedures

### Distributing Recipes

	A	B	C	D	E	F
1		10	20	30	40	50
2		60	70	80	90	100
3		110	120	130	140	150
4						
5						
6						

1 Create and save recipe data in Microsoft Excel.

Symbol	Unit	Device Address	No. of Data	Comment
Start_writing	05	1000000	1	
Device Name	GP1			
Device Address	1000000			
Device Name	GP1			
Device Address	1000000			

2 Register symbols.

Template Designation

Please specify the name of Excel template file that is the source of forms. When you use the record, the theme template file is copied to a file with this name. When you create a new template, please specify the file name.

Template File: Documents and Settings\Administrator\Desktop\template.xls

Output File

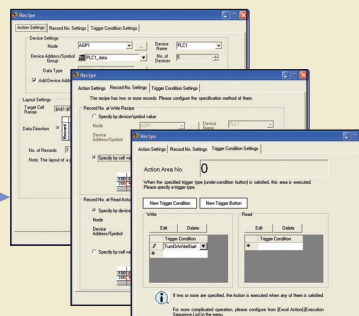
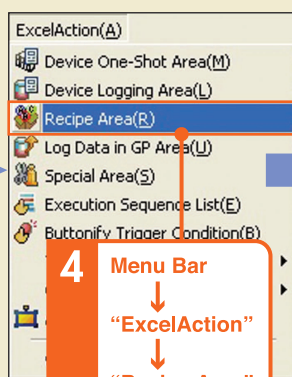
The template file stores setting info. The actual output result will be displayed in the following file.

Folder Name: C:\Documents and Settings\Administrator\Desktop

File Name: RecipeWrite.xls

☒ Start from Displayed State

3 Specify the recipe sheet and the output file.



Save and transmit network project.

It is necessary to purchase separate software in order to use Pro-Server EX.

## 03

## Collect production data in real time without leaving the office

Solution Rating



90%

Q

## QUESTION ≪≪

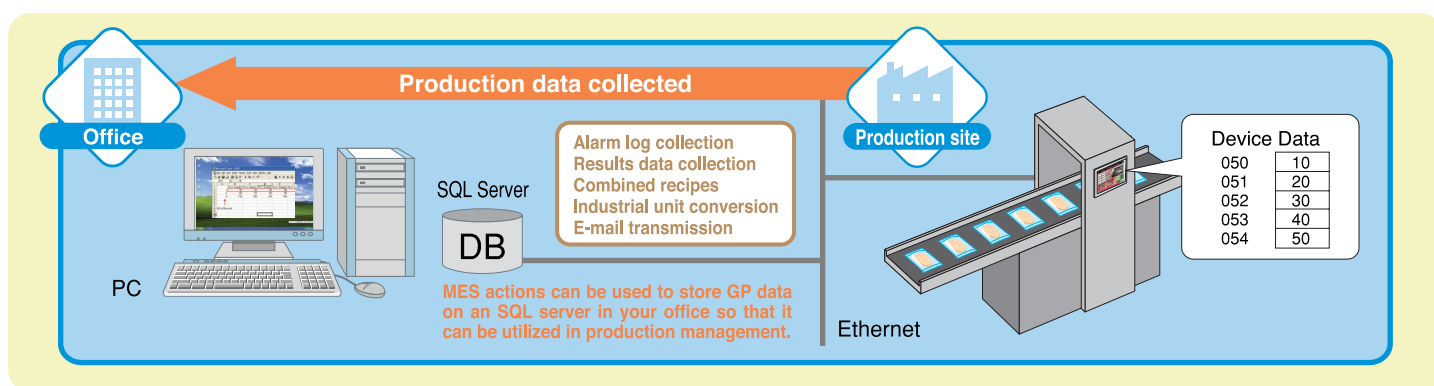
Do you collect data directly from devices even though they are connected to the network?

A

## Pro-face's solution ≪≪

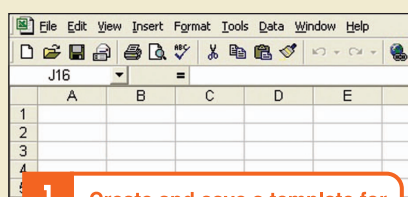
Pro-Server EX automatically collects data from PLCs and other devices in a wide variety of formats. This is useful for real-time production data analysis and other applications.

## Pro-face offers AUTOMATED DATA COLLECTION

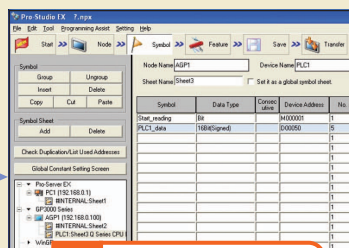


## Easy setting procedures

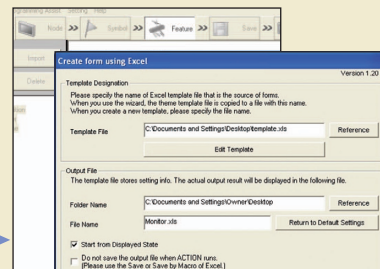
## Collecting Data



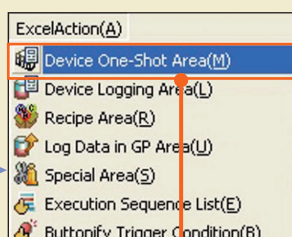
1 Create and save a template for data from connected devices in Excel (using a blank sheet).



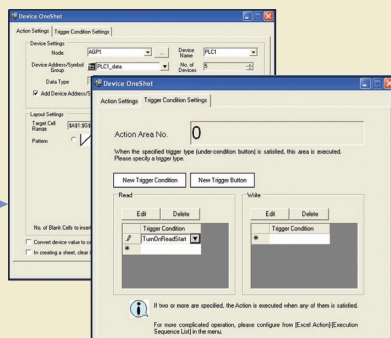
2 Register symbols.



3 Specify a name for the template you just created and the name of the Excel book where data will be output to.



4 Menu Bar  
↓  
"ExcelAction"  
↓  
"Device One-Shot Area"



5 Complete settings in the Action Settings and Trigger Condition Settings tabs.

Save and transmit network project.

It is necessary to purchase separate software in order to use Pro-Server EX.



# 04 Automatically create production status reports

Solution Rating



100%

Q

## QUESTION ≪≪

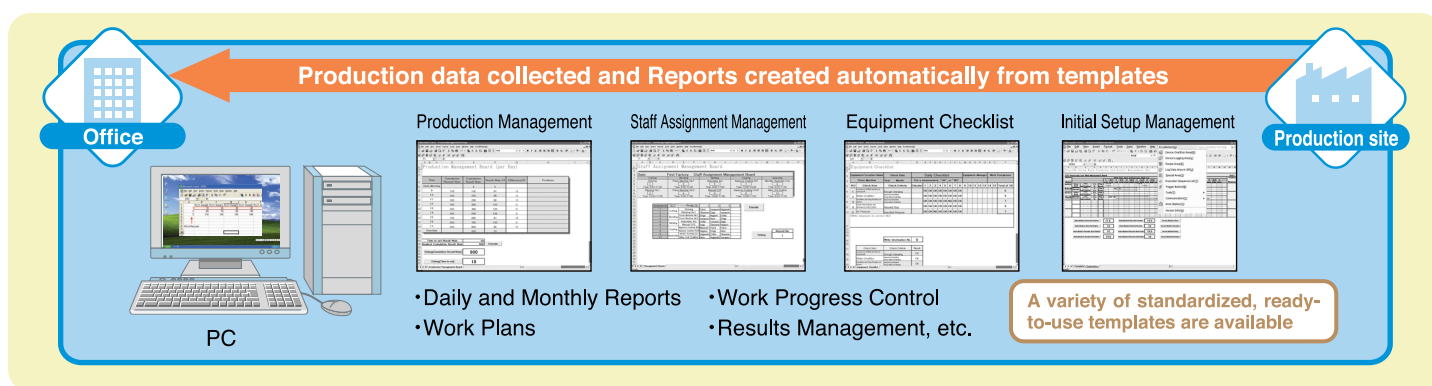
When creating daily production reports, do you check data from each line and collate it in the office?

A

## Pro-face's solution ≪≪

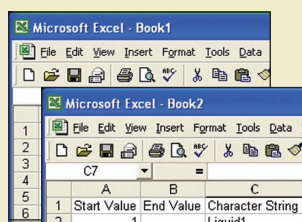
Pro-Server EX has a form creation feature that automatically prepares daily reports and other records.

### Pro-face offers AUTOMATED DAILY REPORTS

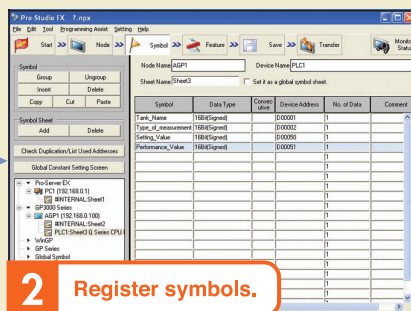


### Easy setting procedures

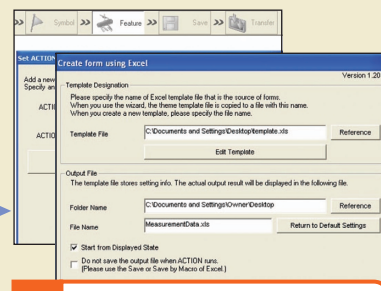
#### Preparing a Daily Report



1 Convert data in Excel, create a table, and save it.

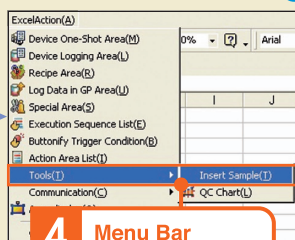


2 Register symbols.



3 Complete settings for the form template and the output file.

Insert Sample

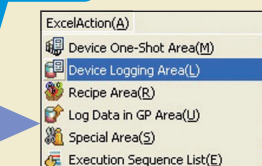


4 Menu Bar

↓ "ExcelAction"

↓ "Tools"

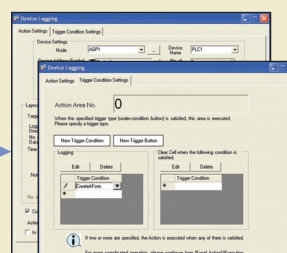
↓ "Insert Sample"



5 Menu Bar

↓ "ExcelAction"

↓ "Device Logging Area"



6

Complete settings in the Action Settings and Trigger Condition Settings tabs.

Save and transmit network project.

It is necessary to purchase separate software in order to use Pro-Server EX.

## SECTION

# 05 Keep informed of progress on the factory floor without leaving the office

Solution Rating



80%

Q

## QUESTION ≪≪

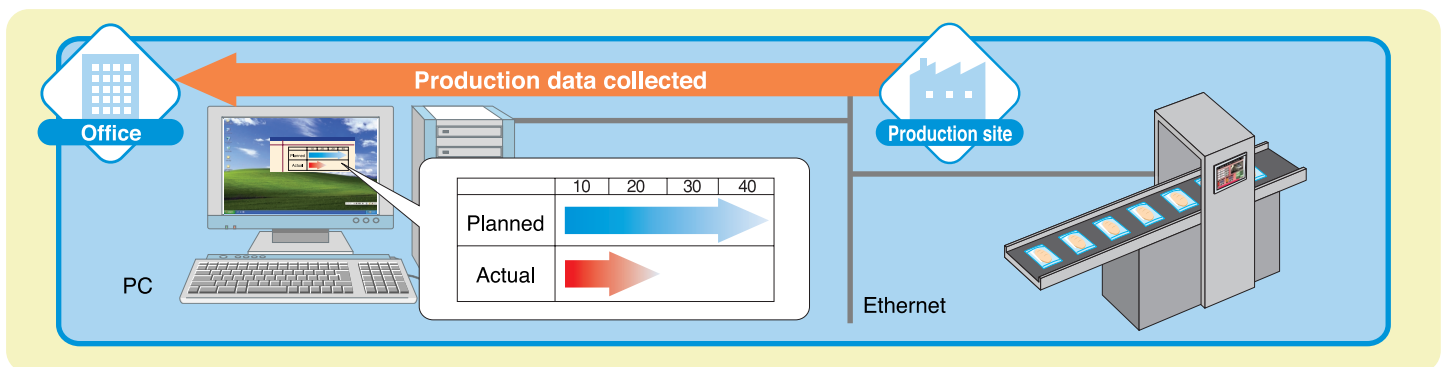
Have you gone to the trouble of integrating complex programming in order to keep an eye on production progress?

A

## Pro-face's solution ≪≪

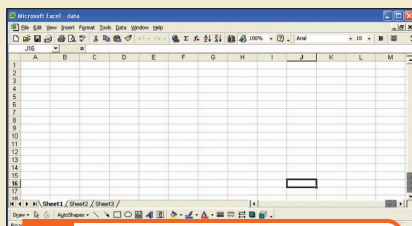
Pro-Server EX uses Excel actions to display progress in the form of arrows, making it easy to grasp the situation at a glance without resorting to complex programming.

## Pro-face offers REAL-TIME PROGRESS CONFIRMATION

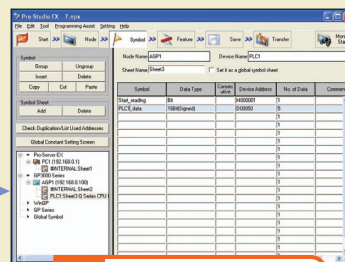


## Easy setting procedures

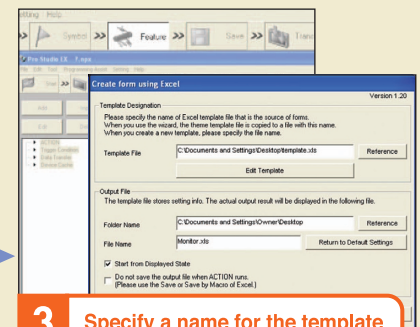
### Arrow shows progress



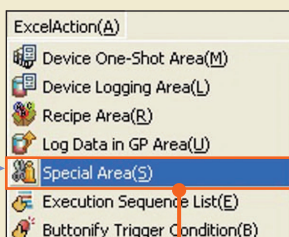
1 Create and save a template for data from connected devices in Excel (using a blank sheet).



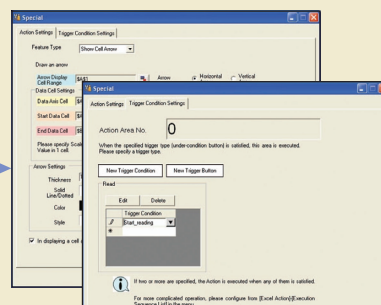
2 Register symbols.



3 Specify a name for the template you just created and the name of the Excel book where data will be output to.



4 Menu Bar  
↓  
"ExcelAction"  
↓  
"Special Area"



5 Complete settings in the Action Settings and Trigger Condition Settings tabs.

Save and transmit network project.

It is necessary to purchase separate software in order to use Pro-Server EX.