

With GP-Pro EX

INDEX

- 01. Decrease the number of PCs linked to your equipment for user application purposes
- 02. PLC serial units not required even when using multiple displays
- 03. Communications units not required if multiple communication devices are connected to displays
- 04. Reduce number of PC monitors for equipment

■ For Equipment Designers

Techniques for Equipment Cost Reduction



01

Decrease the number of PCs linked to your equipment for user application purposes

Solution Rating



90%

Q

QUESTION

Do you have both a display and a PC for running Windows user applications connected to your equipment?

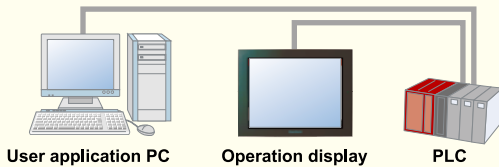
A

Pro-face's solution

Using a Pro-face IPC (Industrial Personal Computer) with WinGP installed allows you to combine the display and PC in one.

Pro-face offers SINGLE IPC

Previously...



PC and display are now combined in one unit

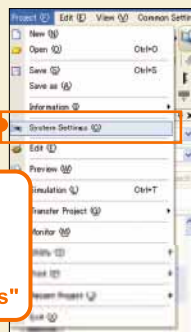


Both Windows user applications and display screen data can be used as normal from the touch screen.

Easy operation

Project File Creation

1 Menu Bar
↓
"Project"
↓
"System Settings"



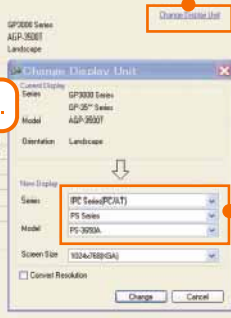
2 Select "Display".



3 Click "Change Display Unit".

Screen created

4 Select "IPC Series," and then select the appropriate model number.

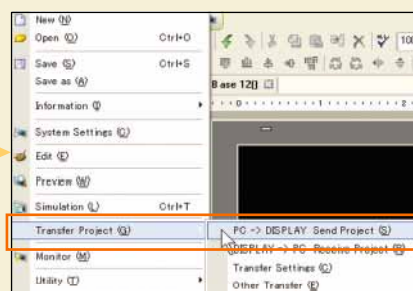


Project File Transfer

1 Start up WinGP.



Industrial Personal Computer



2 Menu Bar
↓
"Project"
↓
"Transfer Project"
↓
"PC→DISPLAY Send Project"



Screen creation PC

A separate WinGP license is required in order to use this function on an IPC.

Q

QUESTION

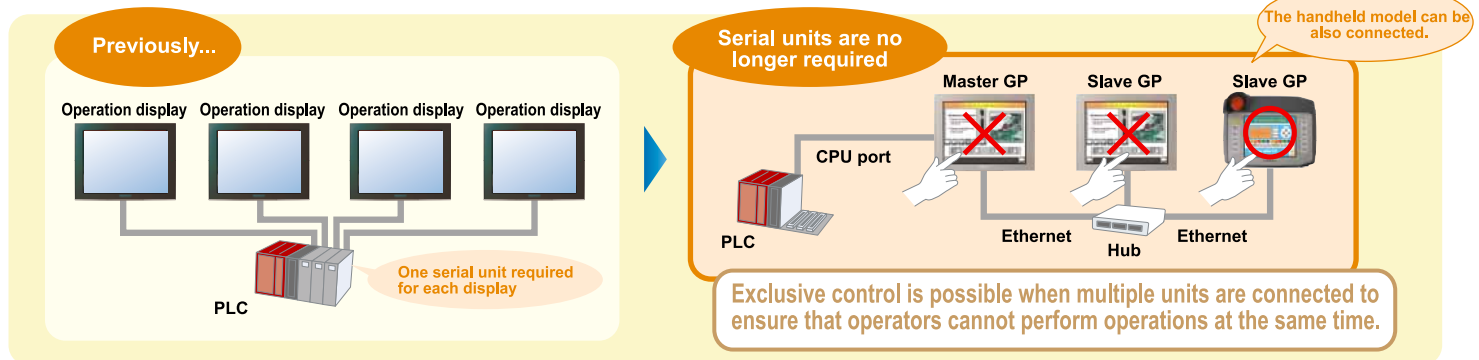
Do you use multiple serial units to connect multiple displays to a PLC?

A

Pro-face's solution

Pro-face allows you to connect multiple displays directly to a single CPU. Displays can be connected to each other by Ethernet network.

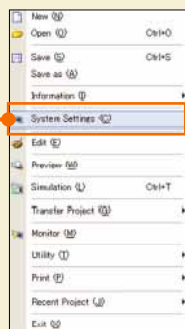
Pro-face offers NO-COST ETHERNET OPERATION



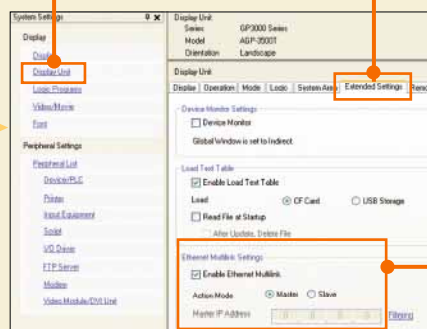
Easy operation

Ethernet Multilink

1 Menu Bar
↓
"Project"
↓
"System Settings"



2 Select "Display Unit".

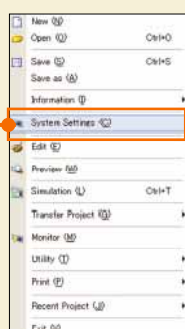


3 Click the "Extended Settings" tab.

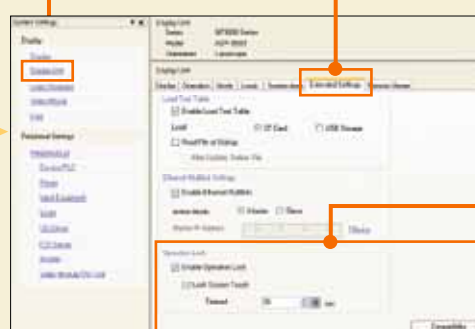
4 Select the "Enable Ethernet Multilink" check box, and then select an action mode.

Exclusive Control

1 Menu Bar
↓
"Project"
↓
"System Settings"



2 Select "Display Unit".



3 Click the "Extended Settings" tab.

4 Select the "Enable Operation Lock" and "Lock Screen Touch" check boxes.

Communication units not required
if multiple communication devices
are connected to displays

Solution Rating



90%

Q

QUESTION

Have you purchased communication units in order to connect PCs and other devices to a PLC?

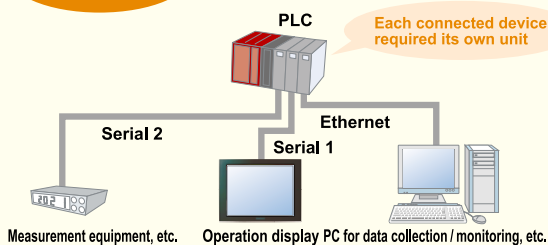
A

Pro-face's solution

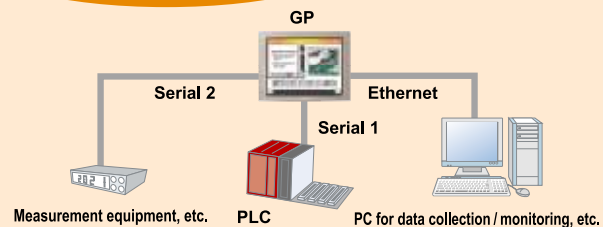
Pro-face displays incorporate a variety of interfaces to allow connection to a variety of devices.

Pro-face offers UNIFORM CONTROL FROM DISPLAY

Previously...



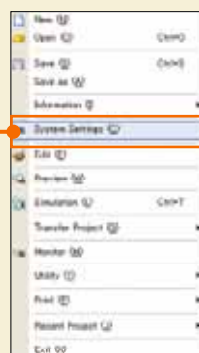
Displays can now be connected to a variety of devices with standard interfaces



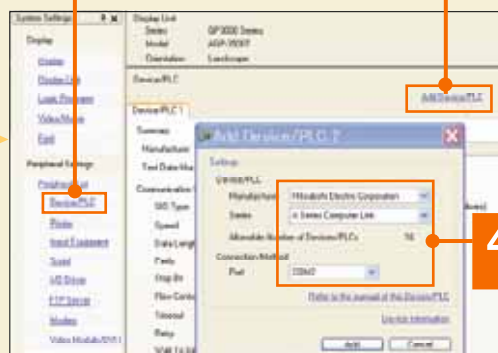
Easy operation

Multi-protocol

1 Menu Bar
↓
"Project"
↓
"System Settings"



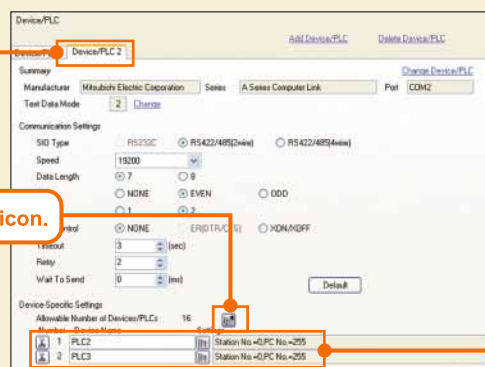
2 Select "Device / PLC".



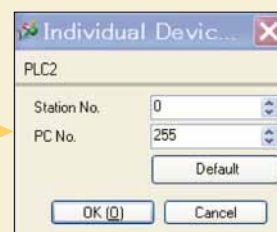
3 Select "Add Device / PLC".

4 Complete "Device / PLC settings".

5 Select the "Device / PLC 2" tab.



6 Click the "Add Device" icon.



7 Complete setting for each model.

A maximum of 16 devices can be added to the RS422, which is also Ethernet compatible.
(Certain models can be used with up to 32 devices.) * Only 2 devices can be connected to mid-size units

04

Reduce number PC monitors for equipment

Solution Rating



80%

Q

QUESTION

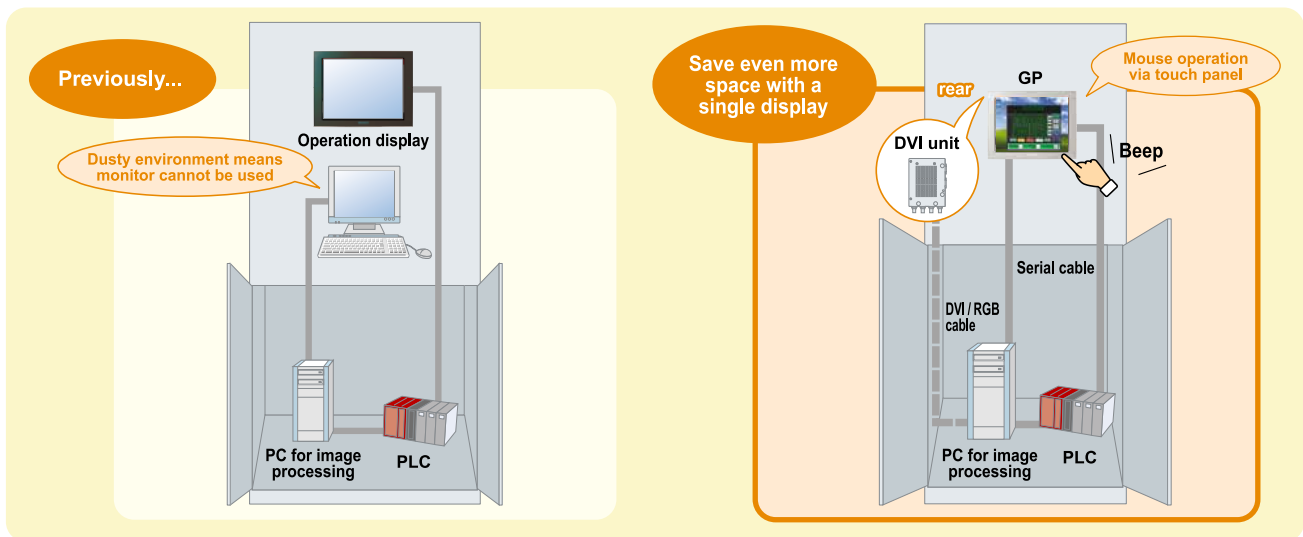
Do you use a separate PC monitor even though you have a display?

A

Pro-face's solution

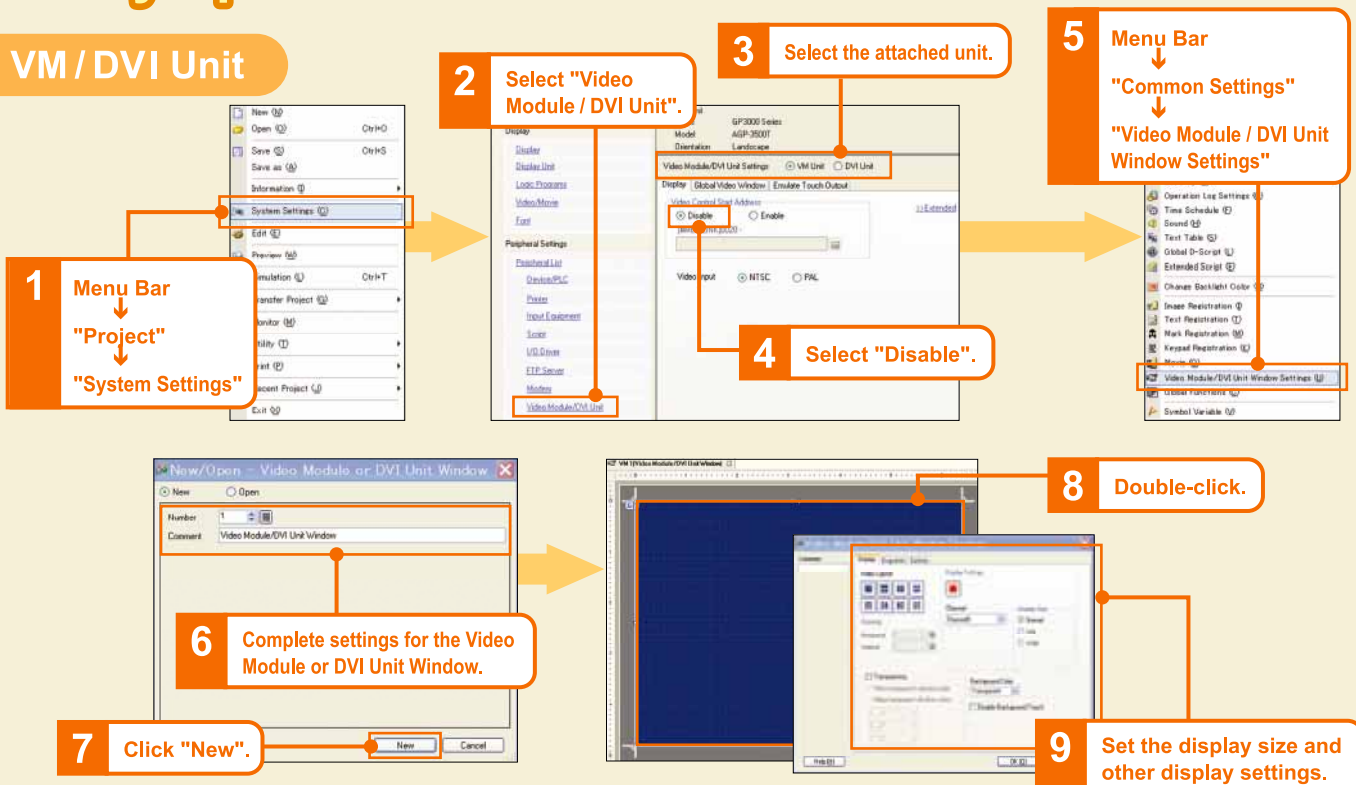
If you use VM or DVI unit, the display can be used as a computer monitor. What's more, because it is a touch panel it does not require a keyboard or mouse.

Pro-face offers ONE DISPLAY + ONE VM / DVI UNIT ONLY



Easy operation

VM / DVI Unit



VM unit can display 4-channel video.