

## INDEX

01. Import your existing projects when upgrading to the latest model
02. Convert old parts into new enhanced parts when importing projects into your new HMI
03. Verify screen operation without transferring your project to the HMI
04. Software enhancements provide additional security functions and help prevent operational errors
05. Track machine operations by operator

■ For Maintenance Engineers

## Techniques for Upgrading to the Latest Models



# SECTION 01 Import your existing projects when upgrading to the latest model

Solution Rating

★★★★★ 100%

Q

## QUESTION

Do you need to convert current project data to work with the latest model?

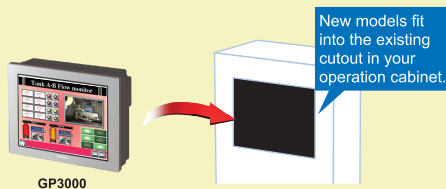
A

## Pro-face's solution

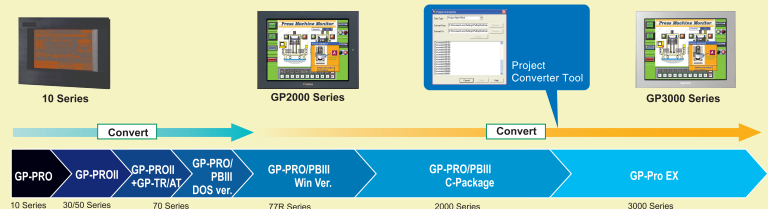
The Project Converter updates the project data created with previous versions of GP-Pro, reducing time and cost, as well as maintains panel cutout compatibility.

## Pro-face offers PROJECT DATA CONVERSION

## Panel Cutout Compatibility



## Project Data Conversion

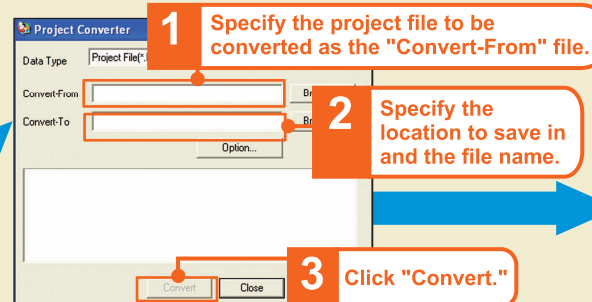


\*Data created with GP-PRO/PBIII for Windows or later versions can be converted using the GP-Pro EX Project Converter.

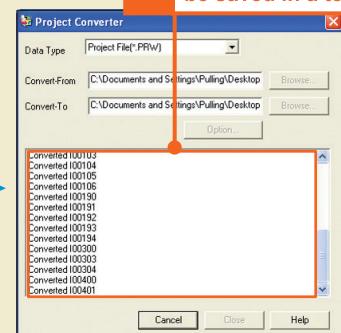
## Easy Setup

### GP-Pro EX Project Converter

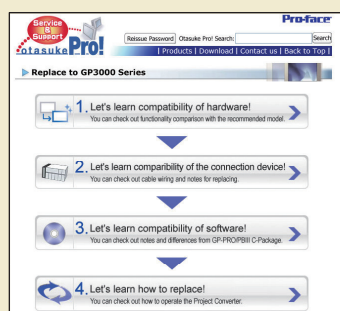
Start Project Converter.



4 The conversion log can be saved in a text file.



### Compatibility Information Website



Visit our support website "Otasuke Pro!" for restrictions and compatibility of GP-PRO/PBIII with GP-Pro EX.



<http://www.pro-face.com/otasuke/qa/gp3000/replace/index.htm>

# SECTION 02

## Convert old parts into new enhanced parts when importing projects into your new HMI

Techniques for Upgrading to the Latest Models

Solution Rating

★★★★★ 90%

Q

### QUESTION

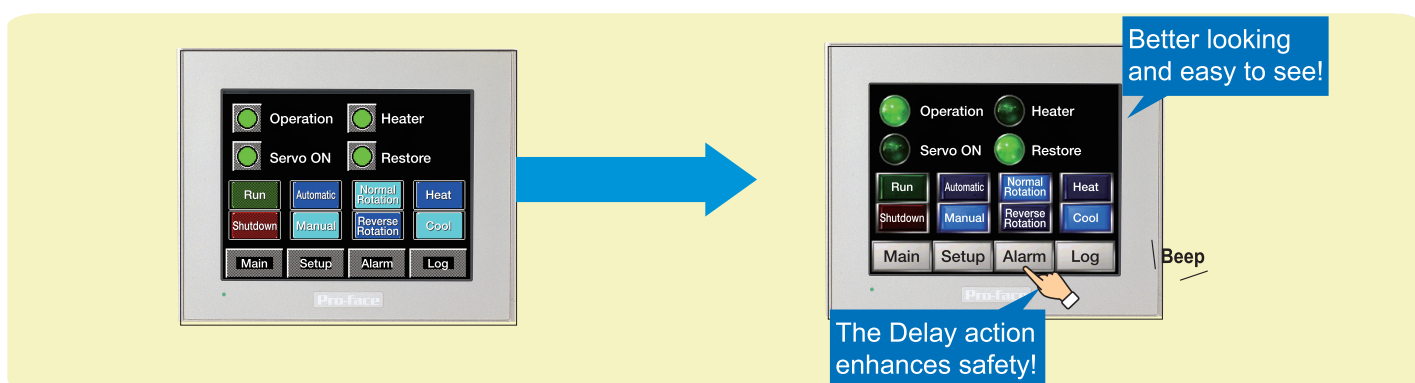
Is it time-consuming to change shapes of multiple parts individually?

A

### Pro-face's solution

The Copy Part Shape feature allows you to easily enhance parts all. Also the Delay feature to delay a button's function prevents the chance of operational errors.

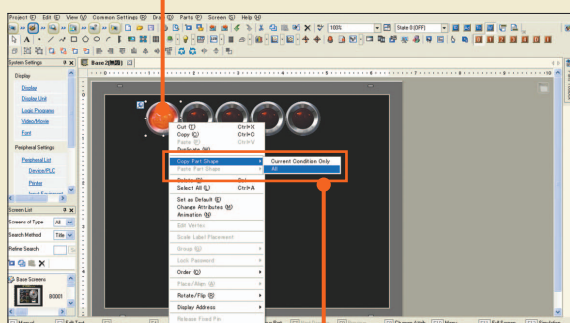
## Pro-face offers BATCH PART SHAPE CONVERSION



## Easy Screen Creation

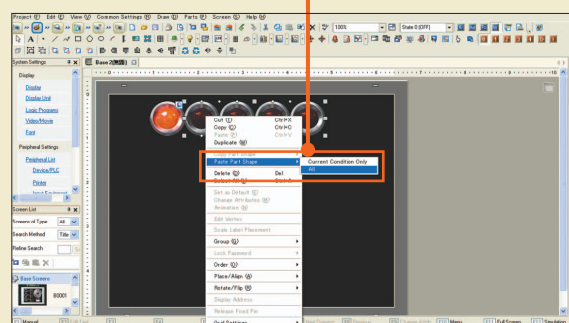
### Batch Part Shape Conversion

1 Select a 3D Real Part that you wish to copy.



2 Right-click and select "Copy Part Shape."

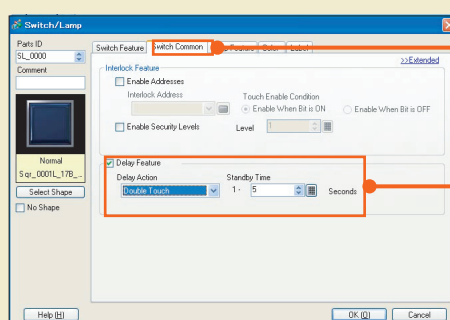
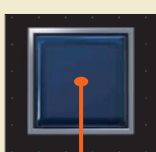
3 Select the parts to convert, right-click and select "Paste Part Shape."



For multiple selections, hold down the Shift key and click parts one by one.

### Delay Feature

1 Double-click a part.



2 Open "Switch Common" tab.

3 Check "Delay Feature," select "Delay Action" (Double Touch or ON/OFF Delay), and specify the delay time.

The Interlock function can also be used together.

# SECTION 03 Verify screen operation without transferring your project to the HMI

Techniques for Upgrading to the Latest Models

Solution Rating

★★★★★ 100%

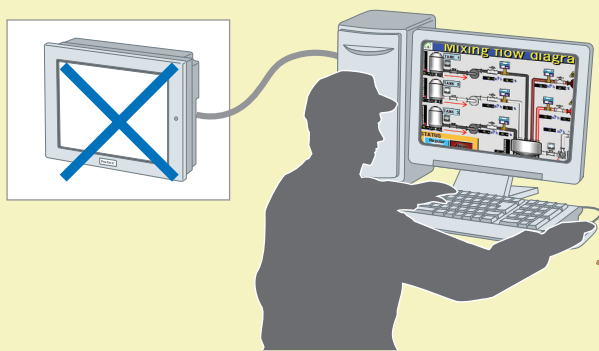
## Q QUESTION

Do you have to download your screens to an HMI to debug your project?

## A Pro-face's solution

You can now check screen operation on your PC and minimize errors by debugging before transferring screen data.

### Pro-face offers EASY SIMULATION OF SCREEN DATA



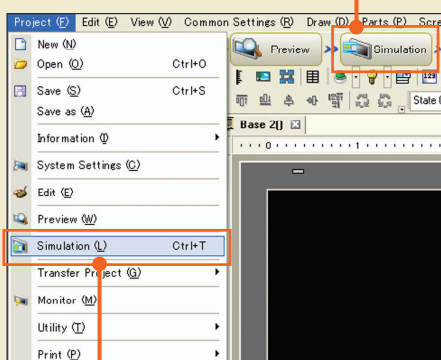
Simulate the environment of an HMI connected to a PLC to check the operation and debug projects on your PC.

Save time debugging projects without having to transfer data to a GP unit or connecting to a PLC.

## Easy Operation

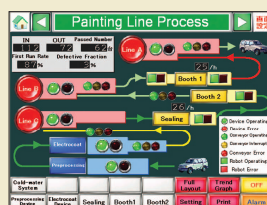
### Simulation

Click "Simulation" on the Operation State Bar.



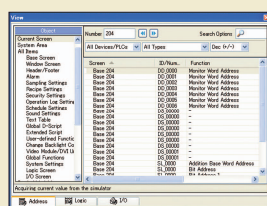
Or you can start the Simulation by selecting from the Project Menu.

You can also start Simulation with the F12 key.



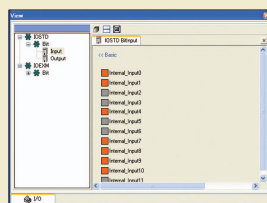
### Screen View

Check the editing screen images and the operation of placed parts with a mouse click. You can also capture the screen images and use them for document use.



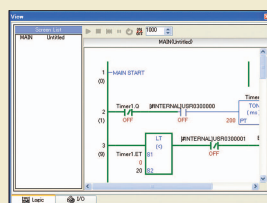
### Address View

Show the list of the values of virtual device addresses and edit the values. You can intuitively debug interacting with the Screen View and the Logic View.



### I/O View

Check the addresses allocated to I/O terminals for expansion of external I/Os. You can turn on/off the input and update the current values.



### Logic View

Check the on/off status of the symbol variables for debugging the logic program.



# SECTION 04 Software enhancements provide additional security functions and help prevent operational errors

Techniques for Upgrading to the Latest Models

**Solution Rating**

★★★★★ 100%

**Q**

## QUESTION

Are machine operators making unneeded operation changes resulting in errors?

**A**

## Pro-face's solution

The security feature can restrict operation functions by hiding parts and setting passwords based on an operator's security clearance.

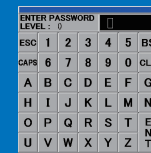
### Pro-face offers OPERATOR ACCESS RESTRICTION

Show/hide each part depending on the operation authority levels.

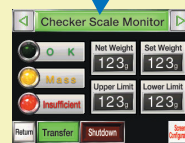
Create just one screen.



Set the password settings on a part.



Operator



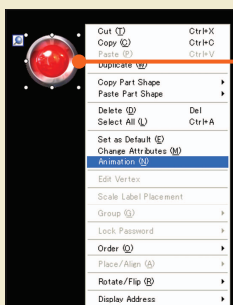
Leader



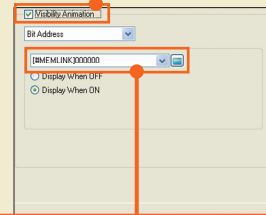
Supervisor

## Easy Screen Creation

### Show/Hide Parts



1 Right-click a part and select "Animation."



2 Check "Visibility Animation."

3 Select the Bit Address and enter an address to show/hide the part.

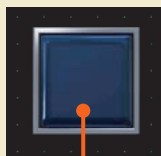
### Other Animation features:

- \* Position/Rotation Animation
- \* Color Animation

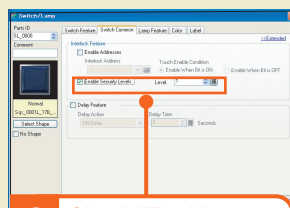
Setup of the Call Screen feature is not necessary.

For AGP330\* series, animation functions is supported only by the type with Rev\*-4 or later.

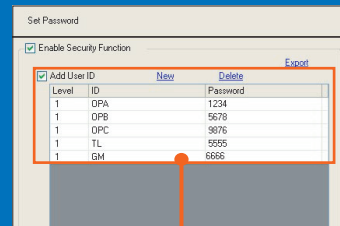
### Security Settings



1 Double-click a part.



2 Check "Enable Security Levels" and set the level.



Common Settings-> Security -> Set Password.  
You can set a security level and a password for each operator.

## SECTION

## 05

Track machine operations  
by operator

Solution Rating



100%

Q

## QUESTION

Do you have trouble finding  
the cause of a machine error?

A

## Pro-face's solution

Using the operation log feature,  
you can record when and how  
operations are done and by whom  
to find the cause of an operation's  
error from logged data.

## Pro-face offers OPERATION LOG COLLECTION

Get operation logs for individual  
parts. Retrieve only the required  
data for easy data management.

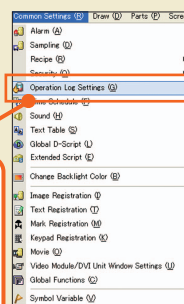
	A	B	C	D	E	F	G	H	I	J	
1	Number	Date	Time	User ID	Level	Screen	Parts ID	Comment	Action	Address	Sub
2	1	2007/9/7	20:02:56		0	B530	SL_0000	Log save	Bit Morn	[#MEMLINK]300000	OFF
3	2	2007/9/7	20:02:56		0	B530	SL_0000	Log save	Bit Morn	[#INTERNALUSR]050100	OFF
4	3	2007/9/7	20:03:11	AAA	1	B531	SL_0007	Alarm Oper	Bit Rvs	[#INTERNALUSR]1152103	
5	4	2007/9/7	20:03:11	AAA	1	B531	SL_0008	Alarm Oper	Bit Rvs	[#INTERNALUSR]1152104	
6	5	2007/9/7	20:03:11	AAA	1	B531	SL_0008	Alarm Oper	Bit Rvs	[#INTERNALUSR]1152105	
7	6	2007/9/7	20:03:14	AAA	1	B531	SL_0008	Stop SW	Bit Ret	[#INTERNALUSR]2502300	
8	7	2007/9/7	20:03:19	AAA	1	B531	DD_0015	Tank 1 Inp	Data Input	[#INTERNALUSR]25000	
9	8	2007/9/7	20:03:24	AAA	1	B531	DD_0016	Tank 2 Inp	Data Input	[#INTERNALUSR]25001	
10	9	2007/9/7	20:03:27	AAA	1	B531	DD_0017	Tank 3 Inp	Data Input	[#INTERNALUSR]25002	
11	10	2007/9/7	20:03:28	AAA	1	B531	SL_0008	Stop SW	Bit Ret	[#INTERNALUSR]2502300	
12	11	2007/9/7	20:03:28	AAA	1	B531	SL_0002	Operation 1	Bit Set	[#INTERNALUSR]2502300	
13	12	2007/9/7	20:03:30	AAA	1	B531	SL_0007	Alarm Oper	Bit Rvs	[#INTERNALUSR]1152103	
14	13	2007/9/7	20:03:31	AAA	1	B531	SL_0007	Alarm Oper	Bit Rvs	[#INTERNALUSR]1152103	
15	14	2007/9/7	20:03:31	AAA	1	B531	SL_0008	Alarm Oper	Bit Rvs	[#INTERNALUSR]1152104	
16	15	2007/9/7	20:03:31	AAA	1	B531	SL_0008	Alarm Oper	Bit Rvs	[#INTERNALUSR]1152105	
17	16	2007/9/7	20:03:32	AAA	1	B531	SL_0010	Alarm Oper	Bit Rvs	[#INTERNALUSR]1152106	

Using a CF card or USB storage, you can save up to 10,000 logs in a CSV file.  
If the number of logs reach the maximum, a new file will be created.

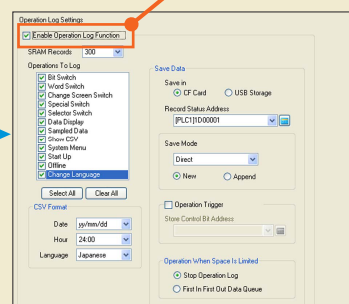
## Easy Screen Creation

## Operation Log Setting

1 Menu Bar  
↓  
"Common Settings"  
↓  
"Operation Log Settings"



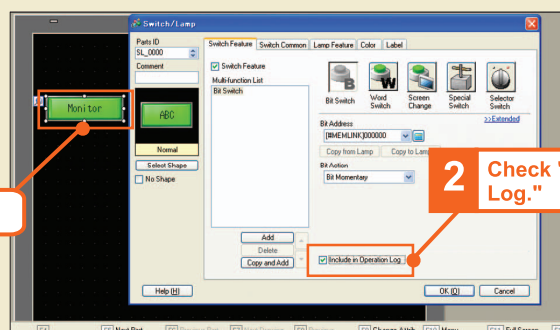
2 Check "Enable Operation Log Function."



Set the operations to  
log, the device to  
save the data in, etc.

## Operation Log Setting on an Individual Part

1 Double-click a part.



2 Check "Include in Operation Log."

By analyzing operation histories, you can improve operation  
procedures and parts placement.