

With GP-Pro EX

INDEX

- 01. Recycle old screen data
- 02. Beautiful on-screen graphics
- 03. Drastically reduce screen numbers
- 04. Quickly search for or jump to parts you want to edit
- 05. Check operation on your PC without forwarding data
- 06. Reduce screen creation time with a wide range of sample parts

■ For Screen Creators

Techniques for Reducing Screen Creation Time



SECTION

01

Recycle old screen data

Solution Rating



80%

Q

QUESTION «««

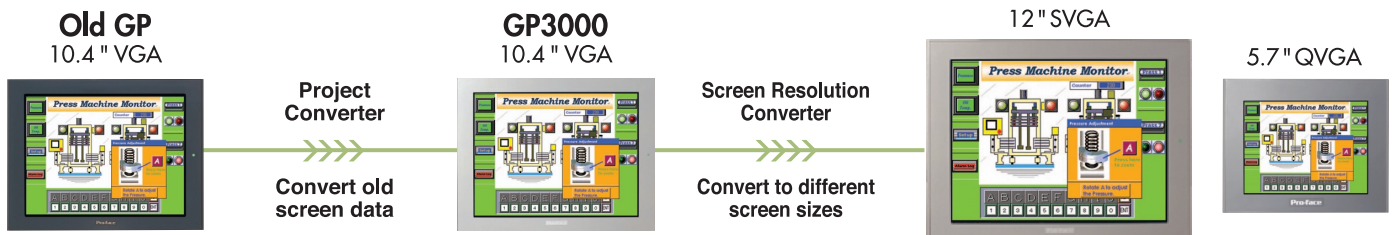
Do you make new screens every time you change models or screen sizes?

A

Pro-face's solution «««

Easy conversion of previous screen data for the latest models. Screen resolutions can also be converted simultaneously, giving you flexibility in your lineup.

Pro-face offers EASY CONVERSION



Reuse old screen data! Register and reuse common parts by dragging and dropping with the package function.

Easy operation

Project Converter

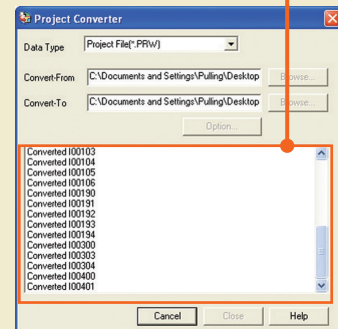
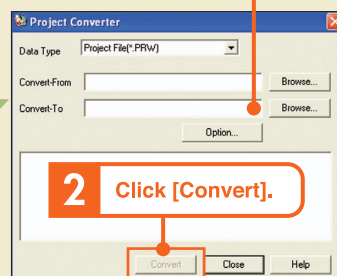
Launch Screen

Launch Project Converter.

1 Select a project file (extension .prw) and write a new file name in the Convert-To text box.

2 Click [Convert].

3 A conversion log file is produced.



Screen Resolution Converter

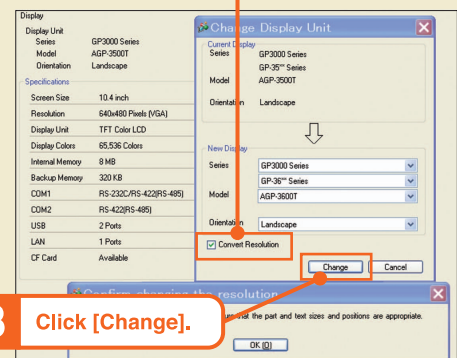
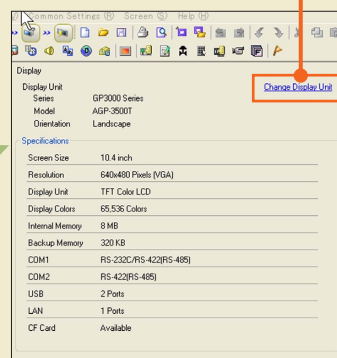
Launch Screen

In the System Settings window, select Display.

1 Click [Change Display Unit].

2 Select a Model for the New Display Unit and select the Convert Resolution check box.

3 Click [Change].



Q

QUESTION ≪≪

Are you having trouble giving your display a realistic look because you're still using the same old parts?

A

Pro-face's solution ≪≪

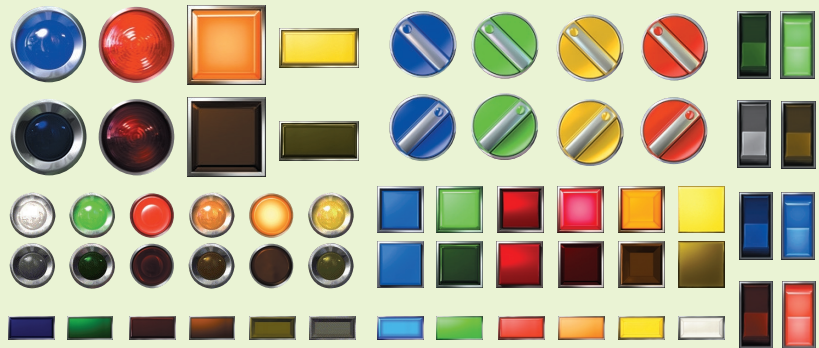
It takes a lot of time to change parts with the same shape one by one. The Batch Shape Conversion function converts old parts into 3D Real Parts in no time.

Pro-face offers **HIGHLY-VISIBLE, 3D Real Parts**

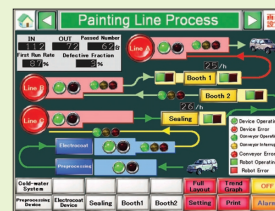
Batch Shape Conversion



New parts added regularly!



GP-Pro EX makes it a breeze to create stylish, easy-to-read screens like these!

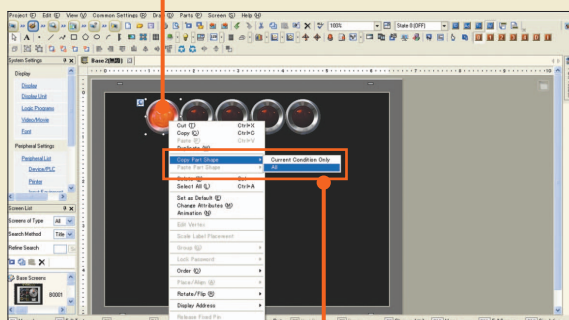


Easy operation

Batch Shape Conversion

1

Select a 3D Real Parts.

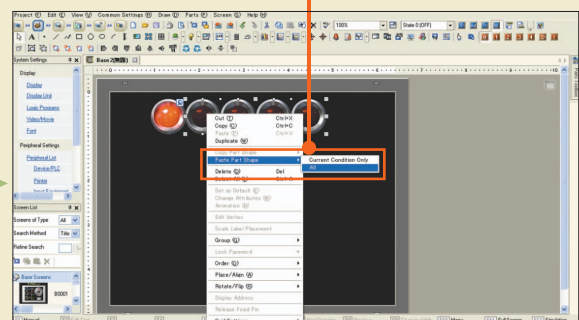


2

Right-click and select Copy Part Shape.

3

Select the part to convert, and select Paste Part Shape.



Holding down the [Shift] key when selecting lets you select multiple parts.

SECTION

03

Drastically reduce screen numbers

Solution Rating

★★★★★ 100%

Q

QUESTION ≪≪

Do you create multiple screens even when screen composition doesn't differ that much?

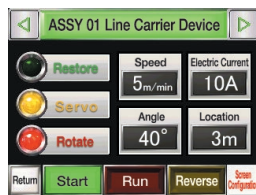
A

Pro-face's solution ≪≪

You can use a single screen in multiple situations by displaying/hiding parts, and switching between languages.

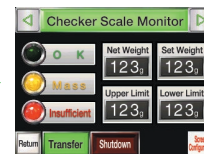
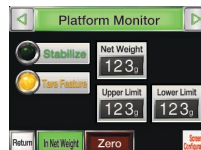
Pro-face offers FEWER SCREENS

Create a single screen



Text Table

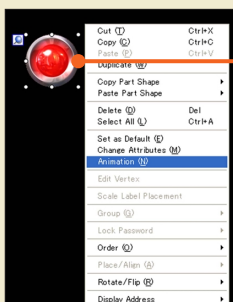
	1	2
ASSY 01 Line Carrier Device	Hopper Scale Monitor	Checker Scale
Restore	Stabilize	OK
Servo	Value	Mass
Rotate	Insufficient	Insufficient
Speed	Net Weight	Net Weight
Angle	measurement	Upper Limit
Electric Current		Set Weight
Location	Pre-measurement	Lower Limit
Start	Eject	Transfer
Run	Shutdown	Shutdown
Reverse	Zero	



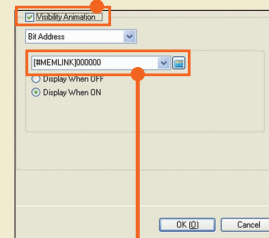
Each part can be displayed or hidden according to PLC device values. You can also use a text table to change labels on a screen-by-screen basis.

Easy operation

Display / Hide Parts



1 Right-click on a part, and select Animation.



2 Select the Visibility Animation check box.

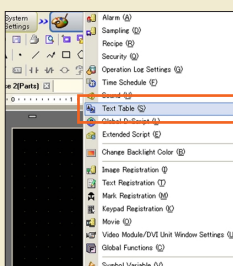
3 Select Bit Address, and input the address to hide/display the part.

Other Animation functions:

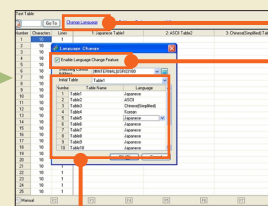
- Move/rotate parts
- Switch part color

No need to create a Calling Screen.

Text Table



1 Menu Bar
↓
Common Settings
↓
Text Table



2 Select Change Language.

3 Check the Enable Language Change Feature check box.

4 Select the language to be used for each table.

By preparing equivalent text in other languages, you can let the user change screen languages even when the system is running. (A translation function is not provided.) Multiple languages can be displayed on a single screen.

04 Quickly search for or jump to parts you want to edit

Solution Rating

★★★★★ 100%

Q

QUESTION «««

Does it take a long time to navigate your way around screens that other people have created because you are not familiar with the structure?

A

Pro-face's solution «««

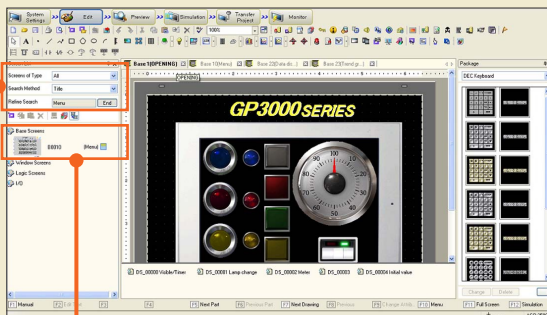
When changing certain specifications while performing maintenance or editing, you can quickly identify the screens and parts you want to edit. This means that you don't have to waste time looking for them if the person who made the screen is not available.

Pro-face offers **SEARCH AND JUMP FUNCTIONS**

Easy operation

Screen List

- 1 Select a screen type and a search method, and perform a refine your search.

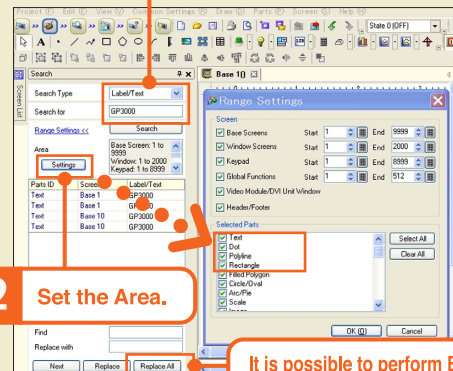


- 2 Target screens will appear.

Search

It is possible to search for parts information within a project by item. Devices, labels, and parts can be edited directly from search results.

- 1 Select the item you want to search for from Comment, Label/Text, Address, or Parts ID.

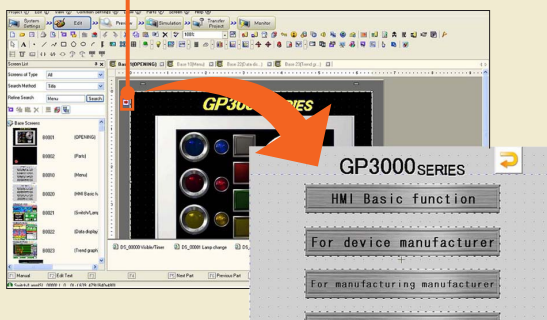


- 2 Set the Area.

It is possible to perform Batch Conversion.

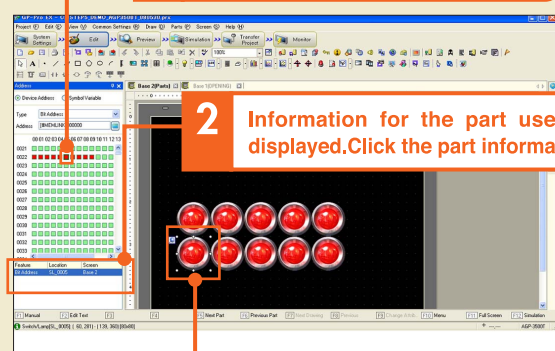
Screen Switching, Call, and Jump Functions

Select Call Screen Parts on the Calling Screen to switch between screens with one click.



Address mapping

- 1 Click a red, already-set address.



- 2 Information for the part used is displayed. Click the part information.

- 3 The relevant part on the base screen is selected.

SECTION

05 Check operation on your PC without forwarding data

Solution Rating

★★★★★ 100%

Q

QUESTION ≪≪

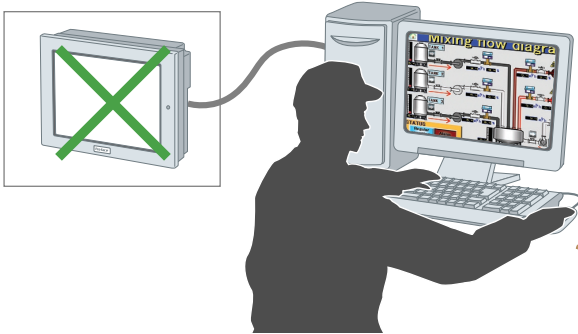
Do you check operation by transferring data to a display?

A

Pro-face's solution ≪≪

It is possible to perform operational checks via a PC. If you do not have a display immediately available, you can perform debugging before transferring data, which helps prevent mistakes and redundant procedures.

Pro-face offers EASY CONFIRMATION OF OPERATION



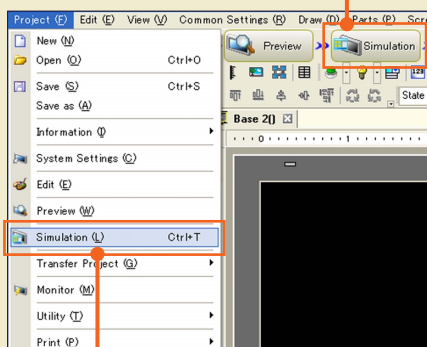
You do not have to transfer data to the main unit: just input device values and a "pseudo-environment" is created via connection to a PLC. You can perform debugging operations with only a PC.

There is no need to transfer data to the GP unit, which saves time.

Easy operation

Simulation

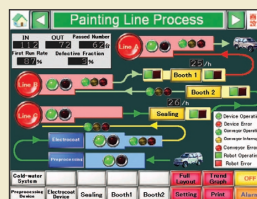
You can also select Simulation from the Status Bar.



Select Simulation.

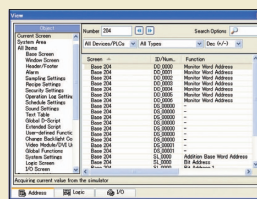
*Start simulation with the [F12] key.

This function is included in GP-Pro EX, so there is no need to purchase a separate simulation tool.



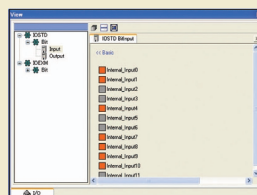
Screen View

You can check screen images and the operation of parts located with a mouse click. It is also possible to take screen shots, and use actual display images in documents.



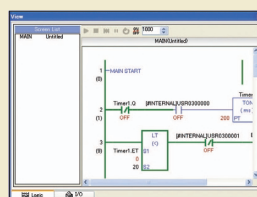
Address View

Display and edit the current list of virtual connected device addresses. Intuitive debugging is possible by using this view in conjunction with the Screen and Logic views.



I/O View

Addresses allocated to input/output terminals can be checked when adding extra external inputs/outputs. Inputs can be switched on and off, and current values can be updated.



Logic View

Current values, and the ON/OFF status of symbol variables can be checked for logic program debugging purposes.

06 Reduce screen creation time with a wide range of sample parts

Solution Rating

★★★★★ 100%

Q

QUESTION ≪≪

Are you finding that you spend too much time on screen creation?

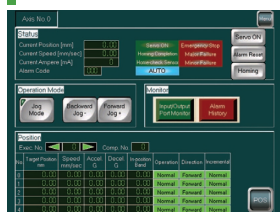
A

Pro-face's solution ≪≪

Pro-face offers ready-made sample parts on the Internet! Settings for a variety of factory automation equipment are quick and easy. It is also possible to edit these according to your application.

Pro-face offers REDUCED SCREEN CREATION TIME

Connected Device Sample



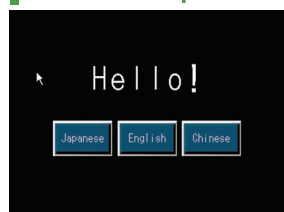
IAI ROBO Cylinder



Yamatake Temperature Controllers

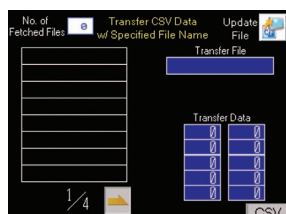
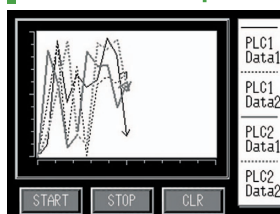
This sample contains complex, pre-set items for temperature controllers, PLCs, and other devices. Thanks to the cooperation of the manufacturer it is possible to access areas that cannot ordinarily be accessed.

Screen Sample



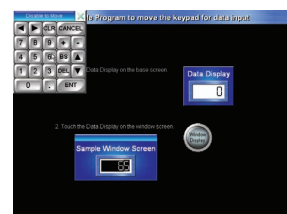
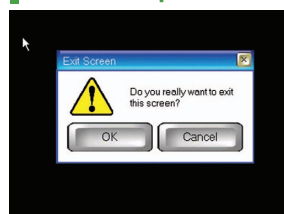
A simple, easy-to-use sample that includes multi-language options, a unified alarm screen, and other functions.

Function Sample



A highly-functional sample that combines multiple functions and scripts, including digital switches and calculator-style keypads.

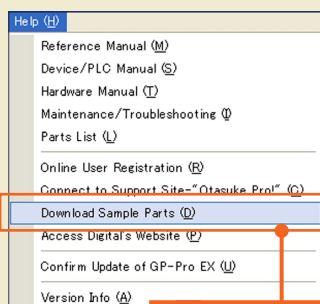
Parts Sample



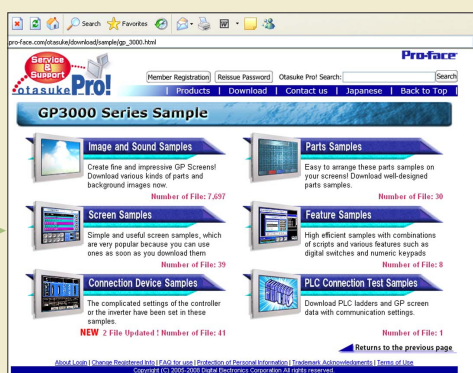
Samples of handy individual parts such as confirmation windows and movable keypads that are easily integrated into existing screens.

Easy operation

Sample Parts



1 Menu Bar
↓
Select Help
↓
Download Sample Parts



Downloaded files are self-extracting. Double-click the files to view the samples and PDF instruction manuals.

We offer a wide variety of samples. Samples can be downloaded from the address on the right.



<http://www.pro-face.com/otsuka/>