

26

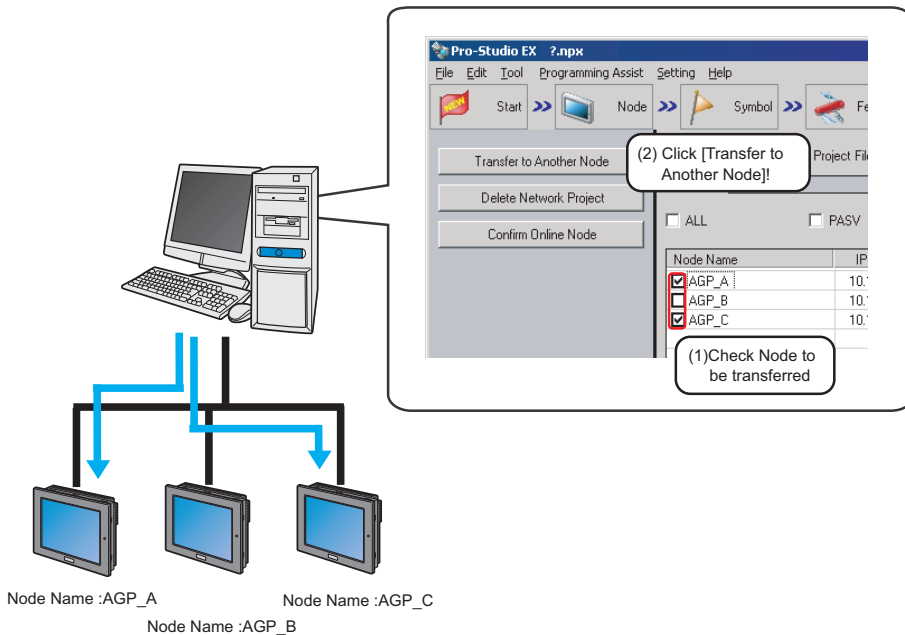


Transferring

26.1	Setting Guide	26-2
26.2	Restrictions	26-5

26.1 Setting Guide

This step transfers a network project file to a specified entry node, making ACTION and data transfer available.



NOTE

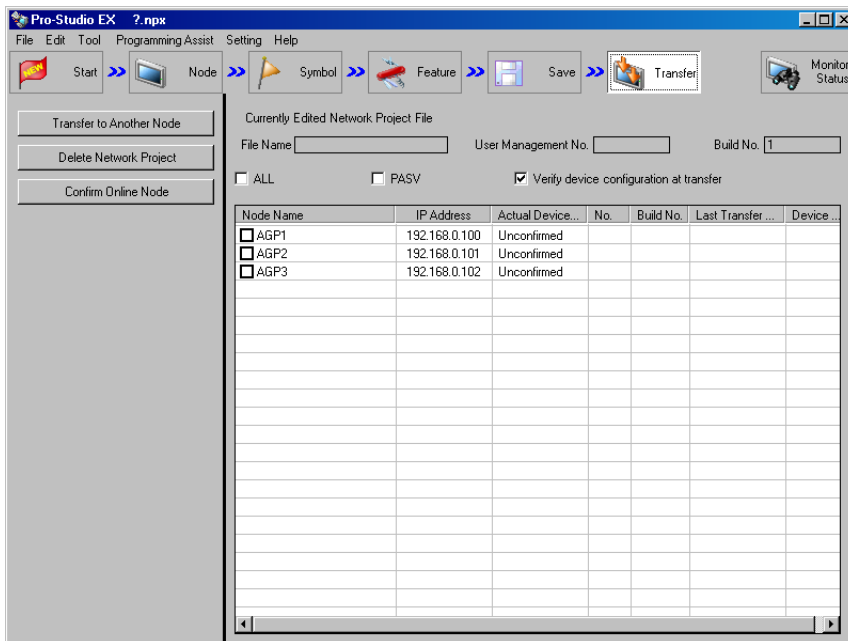
- Please make sure to save the network project file before transferring.

☞ "25 Saving"

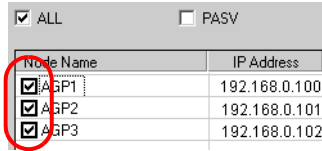
- When transferring a network project to the display unit, although the display unit is restarted, data in backup SRAM is not erased and remains in the same state as before the transfer operation.
- When [NPX ID] is selected under [Compare NPX Project on Connection] on the [Option Settings] screen, you need to transfer the network project to all nodes, including those which are not affected by the changes. When [NPX changes] is selected, you can transfer the network project only to nodes that are affected by the changes, unless the changes of the network project affect target items for comparison. This makes the transfer procedure easier in large-scale systems. Refer to the following section for more details on [Compare NPX Project on Connection].

☞ "34 Setting Up Environment"

- When you change selection of [Compare NPX Project on Connection] on the [Option Settings] screen, execute the transfer to all nodes.
- You cannot upload the network project file from the display unit to the computer.
- Back up the network project file transferred to the display unit.



Setting item	Setting content
Transfer to Another Node	<p>Transfers a network project file to a specified node. When the file transfer is executed, the "Transfer Network Project" screen appears to show the results of network project compilation, transfer status to each node and completion message.</p> <p>NOTE</p> <ul style="list-style-type: none"> • The display unit turns to offline mode when a network project file is transferred, and restarts after the transfer is completed. • When transferred to multiple nodes, a network project file is transferred to each node in order. If error occurs during the transfer to one of the nodes, the transfer process is cancelled without transferring to the rest of the nodes. Click [Transfer to other nodes] to continue the file transfer.
Delete Network Project	<p>Deletes the network project of the node specified. The "Delete Network Project" screen will appear. Click [Yes] or [No].</p> <div data-bbox="653 1445 1016 1595" style="text-align: center;"> </div>
Confirm Online Node	<p>Obtains the information for the network project that was transferred to the specified node and updates the displayed contents of the node list.</p>
Currently Edited Network Project File	<p>Displays File Name, User Management Number, and Build Number of the network project file being edited.</p>

Setting item	Setting content								
ALL	<p>Checks all the nodes displayed.</p>  <p>The screenshot shows a window with two radio buttons: 'ALL' (checked) and 'PASV' (unchecked). Below them is a table with columns 'Node Name' and 'IP Address'. Three rows are visible, each with a checked checkbox in the 'Node Name' column:</p> <table border="1" data-bbox="659 285 979 388"> <thead> <tr> <th>Node Name</th> <th>IP Address</th> </tr> </thead> <tbody> <tr> <td><input checked="" type="checkbox"/> AGP1</td> <td>192.168.0.100</td> </tr> <tr> <td><input checked="" type="checkbox"/> AGP2</td> <td>192.168.0.101</td> </tr> <tr> <td><input checked="" type="checkbox"/> AGP3</td> <td>192.168.0.102</td> </tr> </tbody> </table>	Node Name	IP Address	<input checked="" type="checkbox"/> AGP1	192.168.0.100	<input checked="" type="checkbox"/> AGP2	192.168.0.101	<input checked="" type="checkbox"/> AGP3	192.168.0.102
Node Name	IP Address								
<input checked="" type="checkbox"/> AGP1	192.168.0.100								
<input checked="" type="checkbox"/> AGP2	192.168.0.101								
<input checked="" type="checkbox"/> AGP3	192.168.0.102								
PASV	<p>Transfers in passive mode. This is effective only for transferring a network project file to SP-5B40/WinGP node, SP-5B10 node, GP4000/LT4000 Series node, GP3000 Series node, or LT3000 node.</p> <p>NOTE</p> <ul style="list-style-type: none"> Transfer in passive mode is useful for the file transfer under the circumstance where the network filters FTP commands with the firewall setting. 								
Node List	<p>Node Name</p> <p>Displays registered node names. Check the check box to specify a node.</p>								
	<p>IP Address</p> <p>Displays IP addresses of nodes.</p>								
	<p>Actual Device Status</p> <p>When [Confirm Online Node] is executed, the file name of the network project file that was transferred to the display unit is displayed. GP Series node: You can confirm the existence of the file.</p>								
	<p>No.</p> <p>When [Confirm Online Node] is executed, the user management number of the network project file that was transferred to the display unit is displayed. This is not displayed for GP Series nodes.</p>								
	<p>Build No.</p> <p>When [Confirm Online Node] is executed, the build number of the network project file that was transferred to the display unit is displayed. This is not displayed for GP Series nodes.</p>								
	<p>Last Transfer Date/Time</p> <p>When [Confirm Online Node] is executed, the date and time when the network project file was last transferred to the display unit is displayed. This is not displayed for GP Series nodes.</p>								
	<p>Device/PLC</p> <p>Displays if the Device/PLC information of the screen project file (PRX) transferred to the display unit is same as that of the network project file on the 'Pro-Server EX'. Click the [Confirm Online Node] button to update the latest information.</p> <ul style="list-style-type: none"> Match: The Device/PLC information of the screen project in the node matches that of the transferred network project file (editing network project file before transfer). Match After Transfer: The Device/PLC information of the screen project in the node varies from that of the transferred network project file, but it will operate normally if you transfer the editing network project file. Not Match: The Device/PLC information varies among the screen project in the node, the transferred network project file, and the editing network project file. Match the Device/PLC information between the editing network project file and the screen project in the node, and transfer the former for normal operation. (Blank): Nothing is displayed before verifying the Device/PLC information (before confirming the online node or transferring the network project file). <p>NOTE</p> <ul style="list-style-type: none"> "Device/PLC" (Device/PLC verification) is not available in GP Series node. 								

26.2 Restrictions

- When [NPX ID] is selected under [Compare NPX Project on Connection] on the [Option Settings] screen, you need to transfer the network project to all nodes, including those which are not affected by the changes. When [NPX changes] is selected, you can transfer the network project only to nodes that are affected by the changes, unless the changes of the network project affect target items for comparison. This makes the transfer procedure easier in large-scale systems. Refer to the following section for more details on [Compare NPX Project on Connection].

 34.3 Option Settings

- When you change selection of [Compare NPX Project on Connection] on the [Option Settings] screen, execute the transfer to all nodes.

