

# 20



## Checking SRAM Data on the display unit

20.1	Uploading SRAM Data .....	20-2
20.2	Setting Guide .....	20-6
20.3	Restrictions .....	20-8

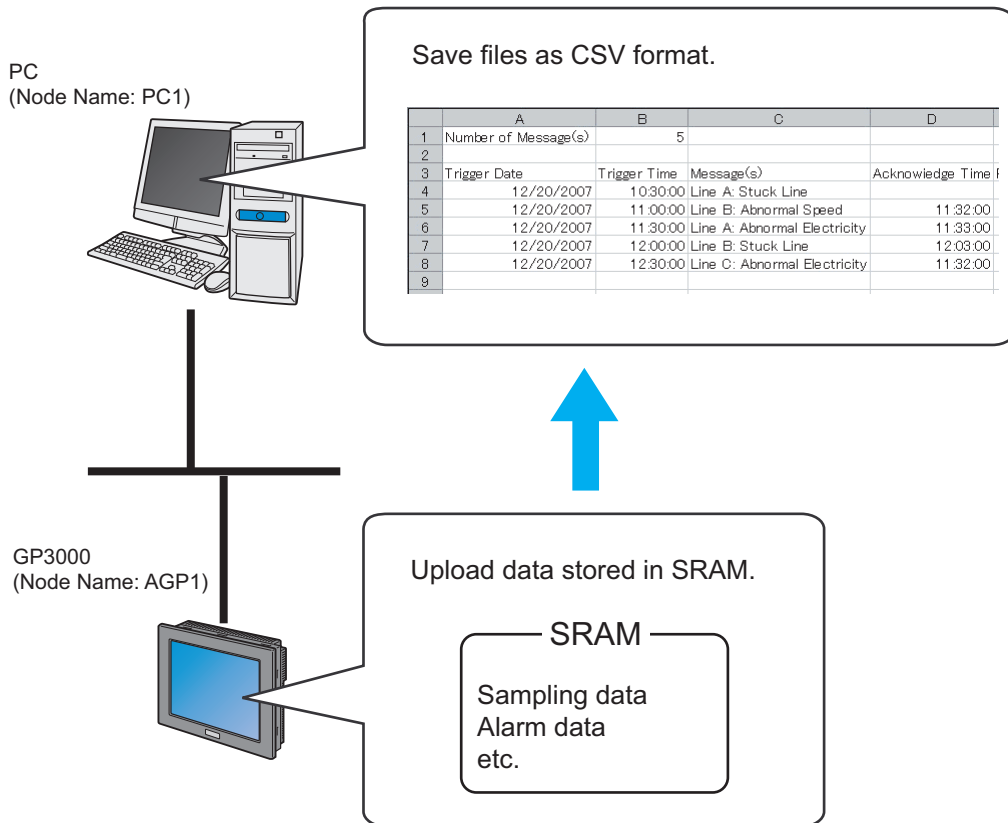
## 20.1 Uploading SRAM Data

The backup data in the SRAM of each display unit can be easily uploaded in CSV format.

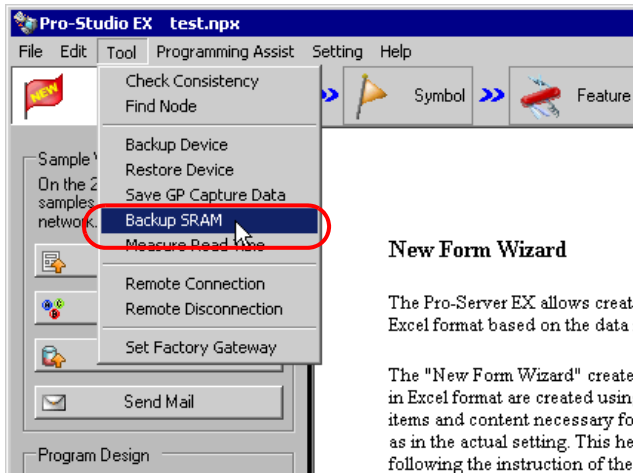
This SRAM backup function is available for logging data, alarm data, and others.

**NOTE**

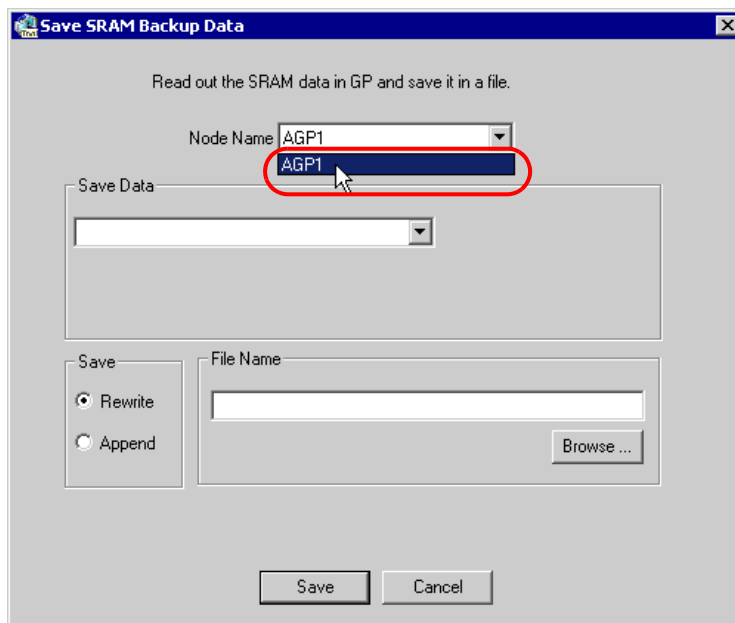
- You cannot use this backup function on Pro-Server EX.
- The SRAM data you can backup differs depending on the type of display unit you are using. For the details, please refer to "20.2 Setting Guide".



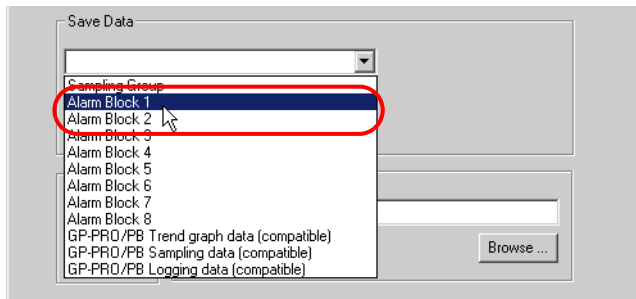
- 1 Click [Backup SRAM] from [Tool] on the menu bar.



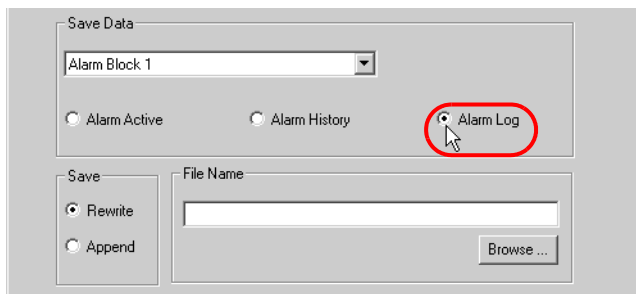
- 2 Click the list button of [Node Name] and select "AGP1" as the entry node in which the data is uploaded.



3 Click the list button of [Save Data] and select the data you wish to save (ex. Alarm Block 1).



4 Select the type of alarm data.

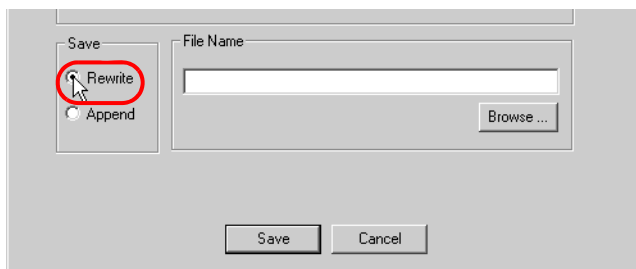



---

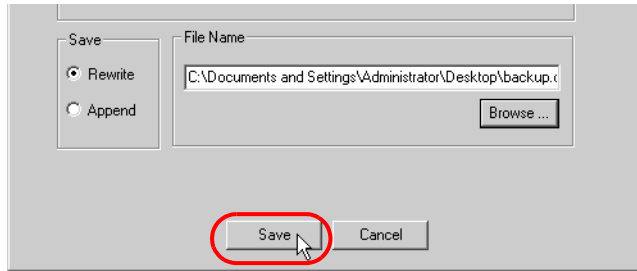
**NOTE** • When [Sampling Block] is selected in Step 3, enter the sampling No. For the details, please refer to "20.2 Setting Guide".

---

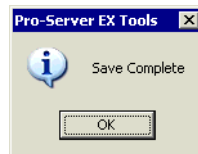
5 Check [Rewrite] in [Save].



- Click the [Browse] button of [File Name] and set the saving destination and file name, then click the [Save] button.



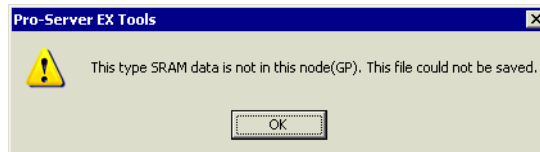
When the saving process has been completed successfully, the message of "Save Complete" appears. Click the [OK] button to finish the saving process.



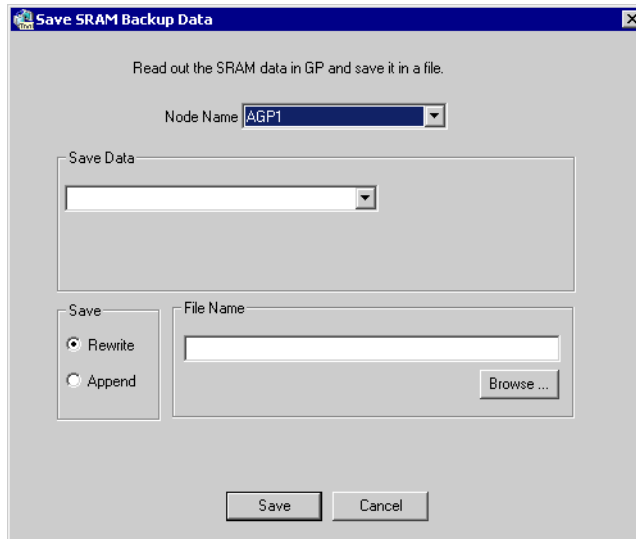
---

**NOTE**

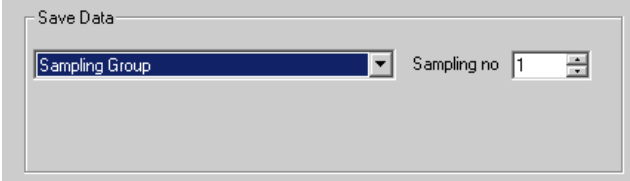
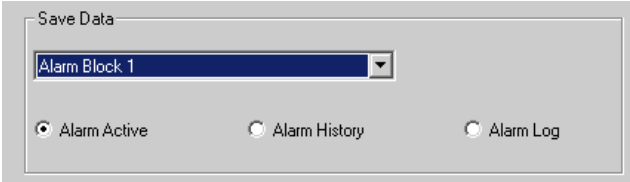
- When you cannot find the specified backup data in SRAM, the following message will appear.



## 20.2 Setting Guide



Setting item	Setting content
Node Name	Select the node reading the SRAM Backup data. <div style="border: 1px solid black; padding: 2px; display: inline-block; margin: 5px 0;"><b>NOTE</b></div> <ul style="list-style-type: none"> <li>• The list indicates the nodes registered in the network project file under loading.</li> </ul>

Setting item	Setting content
<p>Save Data</p>	<p>Select the type of saved data. The type of saved data differs display unit nodes.</p> <p><b>GP Series Node</b></p> <ul style="list-style-type: none"> <li>• Logging Data</li> <li>• Trend Data</li> <li>• Sampling Data</li> <li>• Alarm History Data</li> <li>• Alarm Log Data</li> <li>• Alarm block 1 to Alarm block 8</li> </ul> <p>SP-5B40/WinGP Node, SP-5B10 Node, GP4000/LT4000 Series Nodes, GP3000 Series Nodes, or LT3000 Nodes</p> <ul style="list-style-type: none"> <li>• Sampling Group Enter the sampling No. in "1" to "64" range.</li> </ul>  <ul style="list-style-type: none"> <li>• Alarm block 1 to Alarm block 8 Select the data type.</li> </ul>  <ul style="list-style-type: none"> <li>• GP-PRO/PB Trend graph data (compatible)</li> <li>• GP-PRO/PB Sampling data (compatible)</li> <li>• GP-PRO/PB Logging data (compatible)</li> </ul> <p><b>NOTE</b></p> <ul style="list-style-type: none"> <li>• When using project data converted from "GP-Pro/PBIII for Windows" on a SP-5B40/WinGP, SP-5B10, GP4000/LT4000 Series, GP3000 Series, or LT3000 node to upload trend graph, sampling, or logging data, select "compatible" for the associated data.</li> <li>• When reading Alarm data or sampling data, the date format is "yy/mm/dd".</li> </ul>
<p>Save</p>	<p>Select the saving method to save data in an existing data file.</p> <ul style="list-style-type: none"> <li>• Rewrite Overwrite the data and save. Select this option when creating a new file or overwriting data in the existing data file.</li> <li>• Append Add the current data to the existing data file and save.</li> </ul>
<p>File Name</p>	<p>Set the data saving destination and the file name. If you select [Append], click the [Browse] button to select the existing file.</p>

## 20.3 Restrictions

- If [Multiple Line Message Output (Save Alarm to CSV)] is enabled in GP-Pro EX alarm settings, messages with line breaks are output to a single cell. If [Multiple Line Message Output (Save Alarm to CSV)] is disabled, the message up to the line break only is saved.