

# 17



# Writing the display unit's Filing Data to Excel

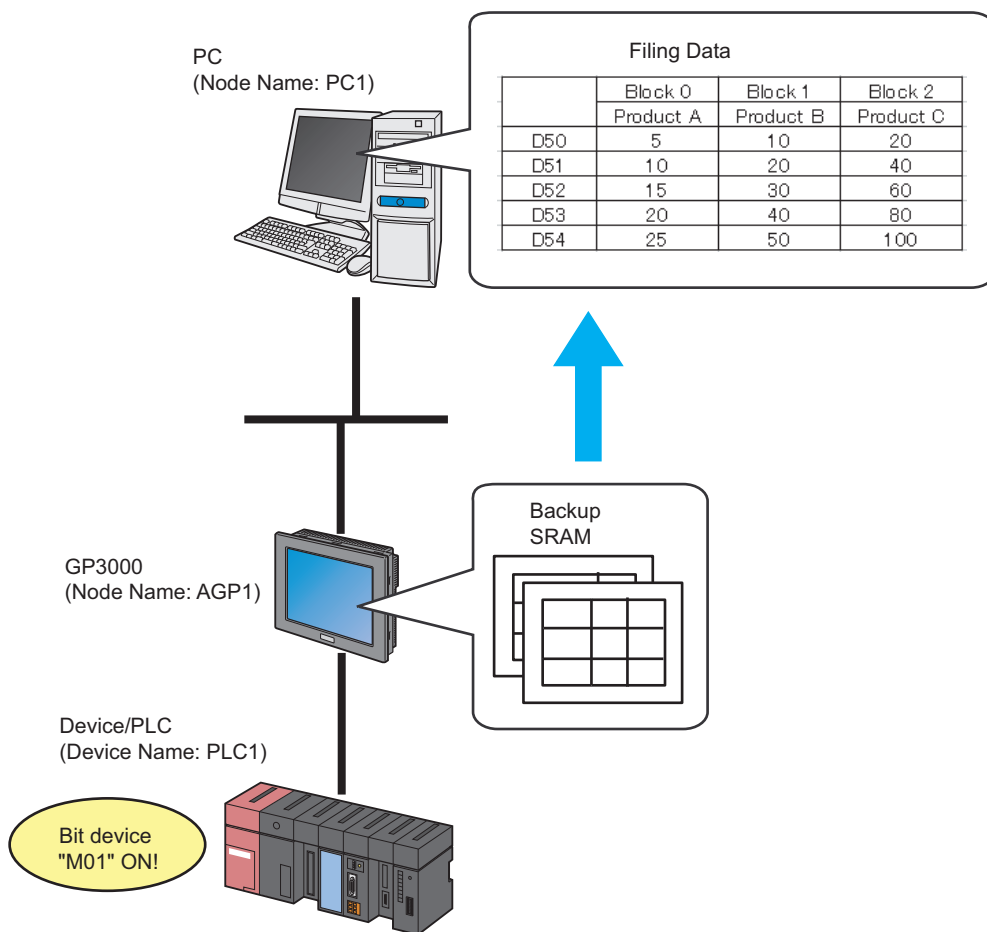
17.1	Uploading the display unit's Filing Dataal .....	17-2
17.2	Setting Guide .....	17-22

## 17.1 Uploading the display unit's Filing Data

**NOTE** • Refer to the 'GP-Pro Ex Reference Manual' for more details about filing data.

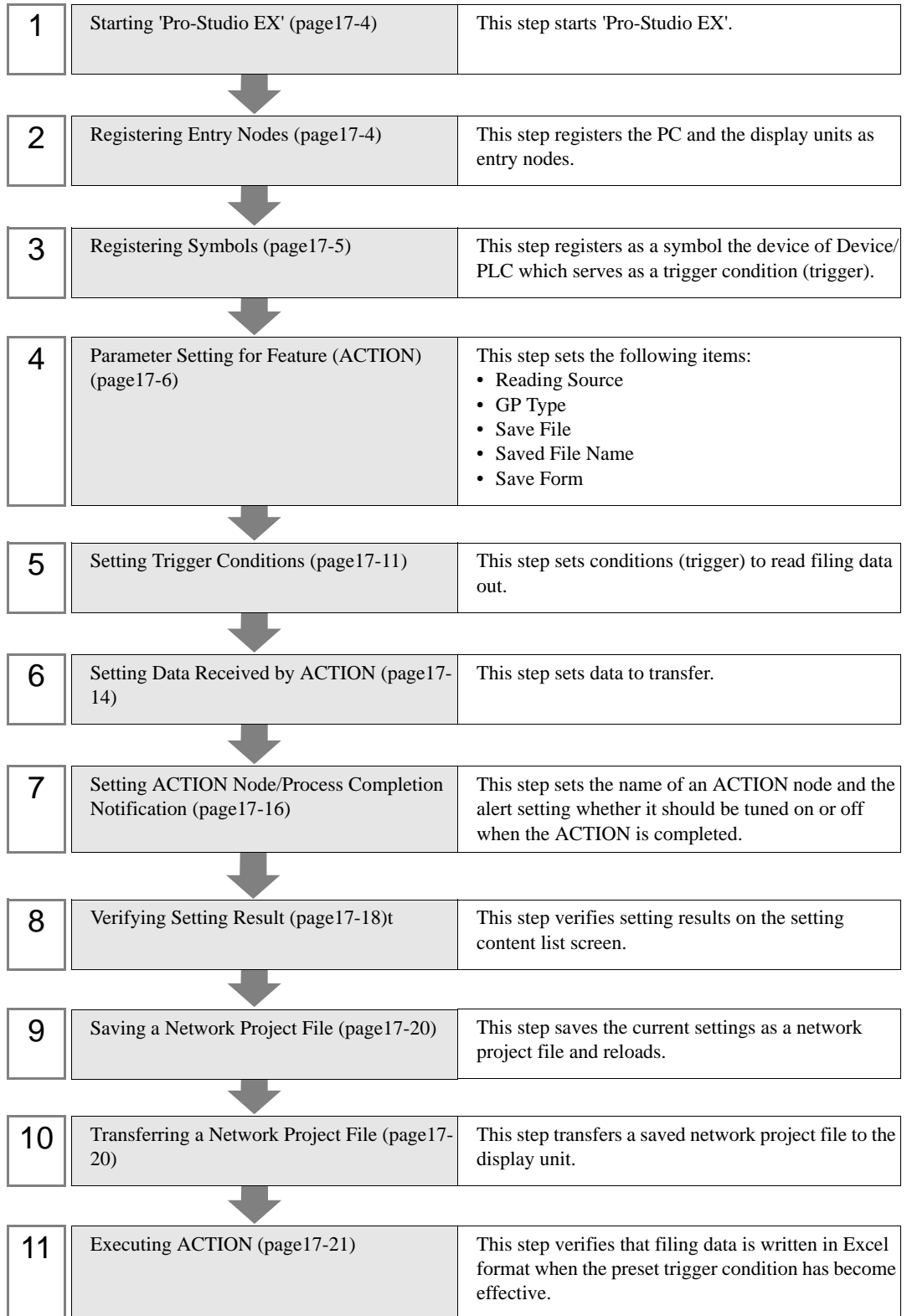
### [Action Example]

Detect the rising of the trigger device (bit device: "M01") of Device/PLC, read filing data saved in the backup SRAM of display unit, and write the data into an Excel file.



This section describes the setting procedures for executing the above action (ACTION) as an example.

[Setting Procedure]



### 17.1.1 Starting 'Pro-Studio EX'

This step starts 'Pro-Studio EX'.

Refer to "3 Trial of Pro-Server EX" for details about starting method.

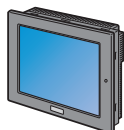
### 17.1.2 Registering Entry Nodes

This step registers the PC and the display unit connected with network as nodes.

Refer to "31 Node Registration" for details about entry nodes.



Node Name :PC1  
 IP Address :192.168.0.1



Node Name :AGP1  
 IP Address :192.168.0.100

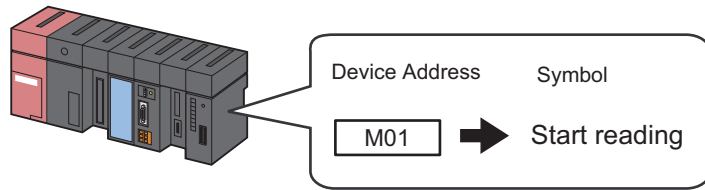
Device/PLC Information

**Ex.**

Entry node	Setting item	Setting example
PC	Node Name	PC1
	IP Address	192.168.0.1
Display Unit	Type	GP3000 series
	Node Name	AGP1
	IP Address	192.168.0.100

### 17.1.3 Registering Symbols

This step registers as a symbol the device address of Device/PLC which serves as a trigger condition. Refer to "32 Symbol Registration" for details about entry nodes.



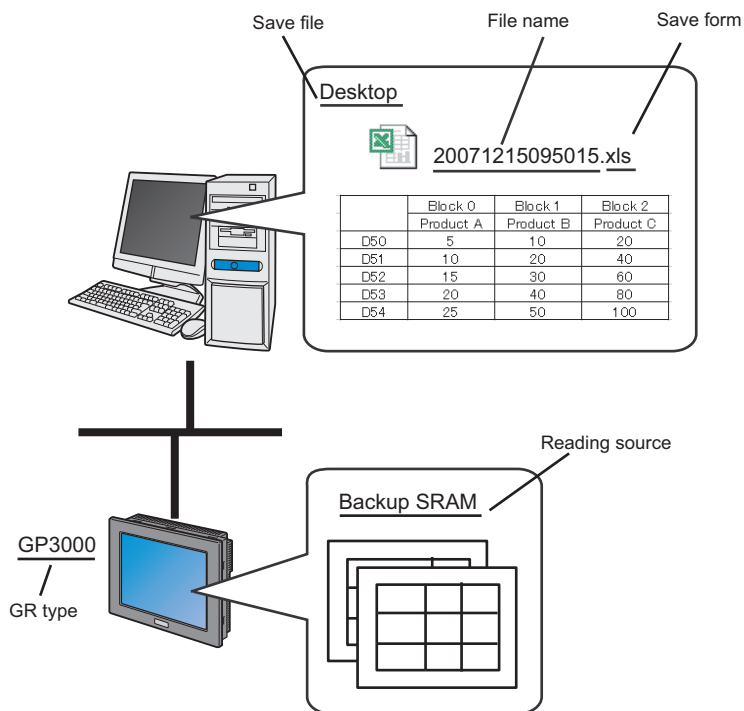
Ex.

Setting item	Setting content
Symbol Name	Start reading
Data Type	Bit
Device address for symbol registration	"M01" of Device/PLC (PLC1)
No. of Devices	1

### 17.1.4 Parameter Setting for Feature (ACTION)

This step makes settings to read filing data out. (Parameter settings)

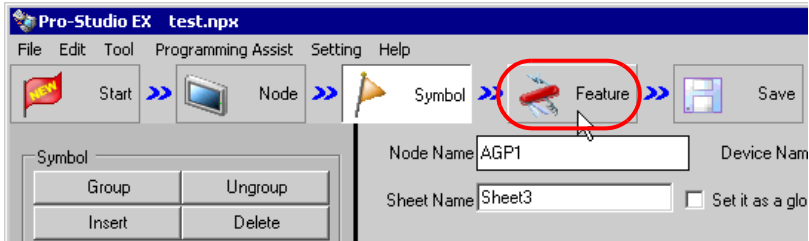
Refer to "17.2 Setting Guide" for more details about ACTION parameters.



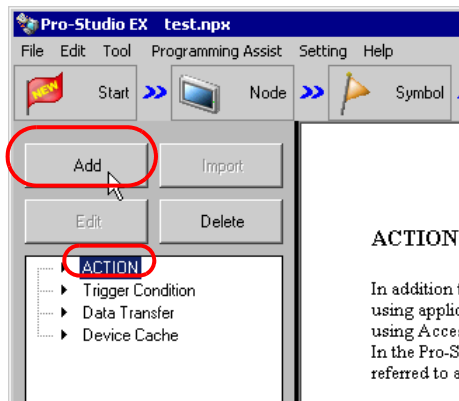
#### Ex.

Setting item	Setting content
ACTION Name	Filing data upload
Reading Source	Filing data in the backup SRAM of GP
GP Type	GP3000 series
Save File	PC Desktop
Saved File Name	%Y%M%D%h%m%s (Year/Month/Day/Hour/Minute/Second)
Zero Suppress	OFF
Save Form	Excel file (.xls)

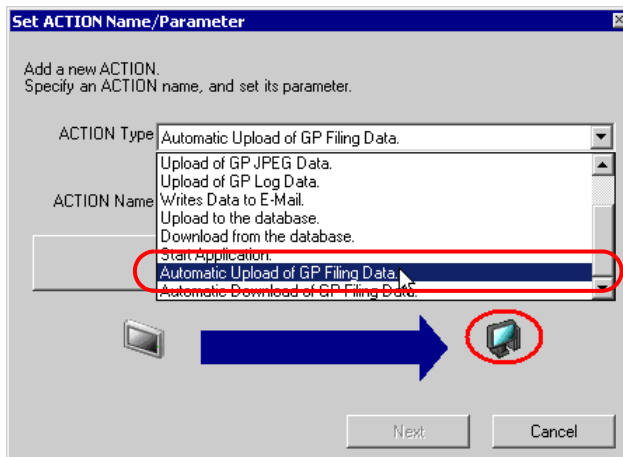
- 1 Click the [Feature] icon on the status bar.



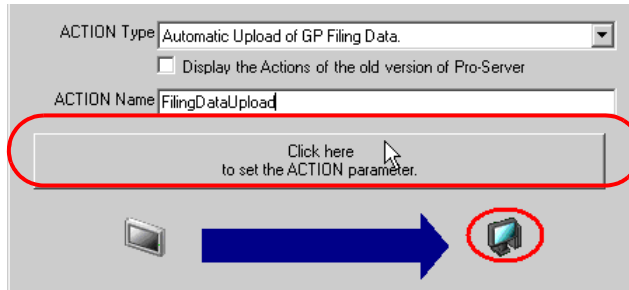
- 2 Select [ACTION] from the tree display on the left of the screen, then click the [Add] button.



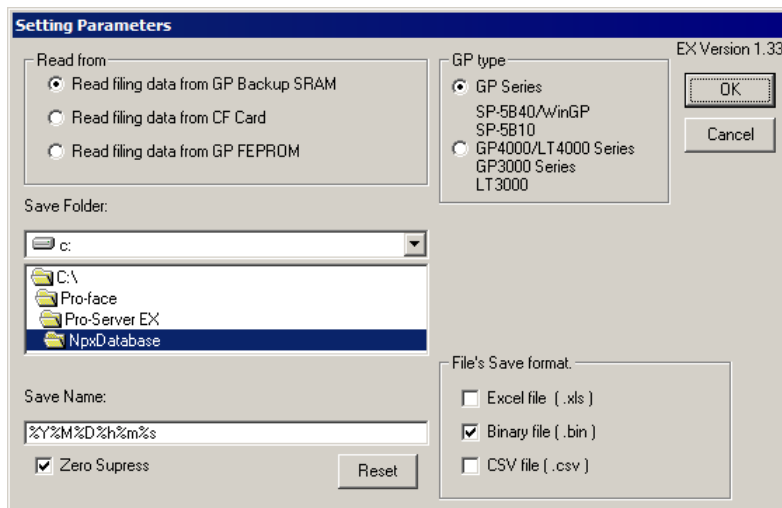
- 3 Click the [ACTION Type] list button, and select "Automatic Upload of GP Filing Data". Then, enter the name of ACTION to set in the [ACTION Name] field. In this example, enter "Filing Data Upload".



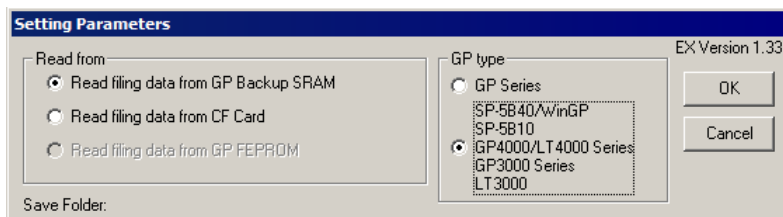
4 Click the [Click here to set the ACTION parameter] button.



5 Check [Read filing data from GP Backup SRAM] in [Read from].

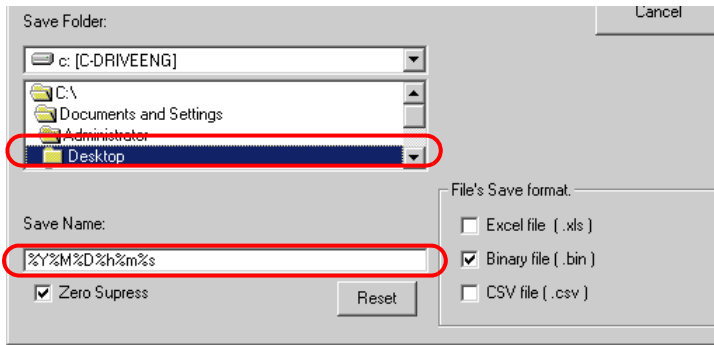


6 In the [GP type] area, select the [SP-5B40/WinGP / SP-5B10 / GP4000/LT4000 Series / GP3000 Series / LT3000] option.

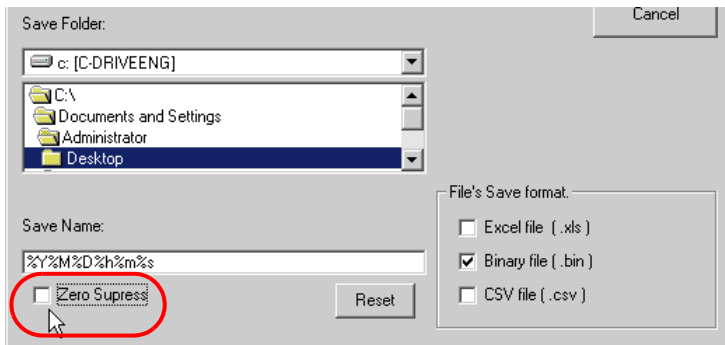




- 7 Set "Desktop" for [Save Folder] as a folder to store the file to write data in, with the default file name "%Y%M%D%h%m%s".



- 8 Turn off the [Zero Suppress] check box, if checked.



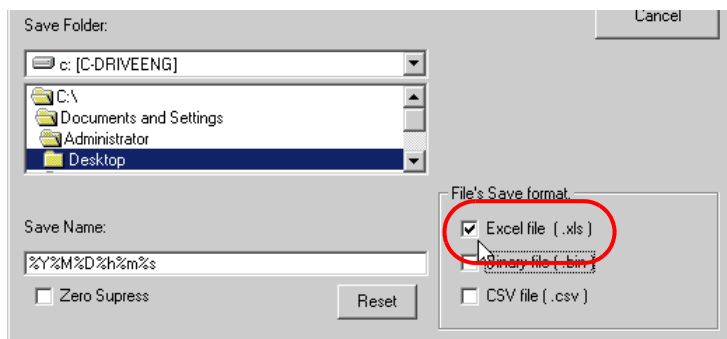
What is %Y%M%D%h%m%s?

Refers to the time when data has been written and this is saved in the format of "YearMonthDateHour/Minute/Second".

(Example) The file name for which data was written at 9:50:15 on Dec. 15, 2007 becomes "20071215095015".

Refer to "37.1 Restrictions on Names" for more details.

- 9 Check [Excel file (.xls)] in [File's Save format.] for the format of the file to which data is written.



10 Click the [OK] button.

This is the end of the feature (ACTION) settings.

### 17.1.5 Setting Trigger Conditions

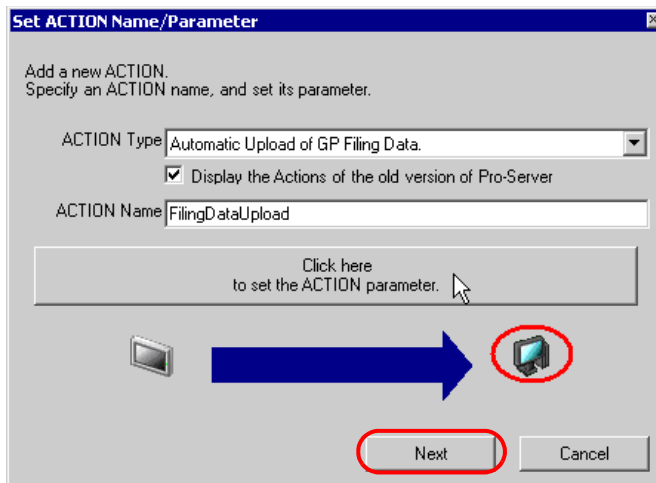
This step sets conditions (trigger bit ON) to read filing data out.

Refer to "33 Trigger Conditions" for details about trigger conditions.

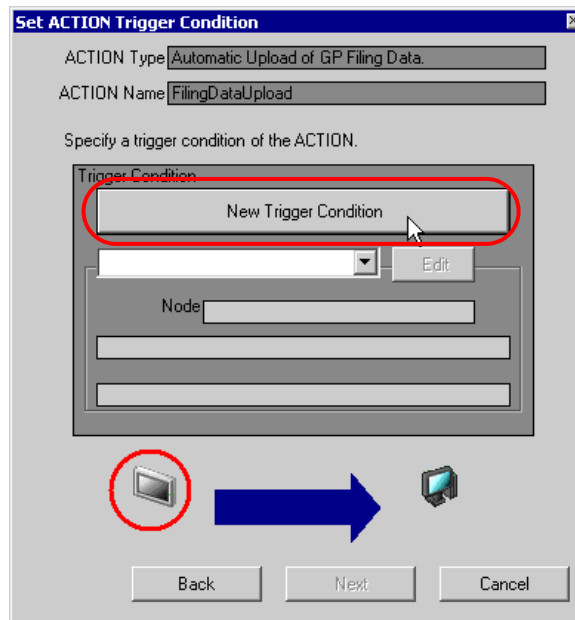
**Ex.**

- Trigger Condition Name: Turn on read start bit
- Trigger Condition : When "Start reading" (M01) is ON

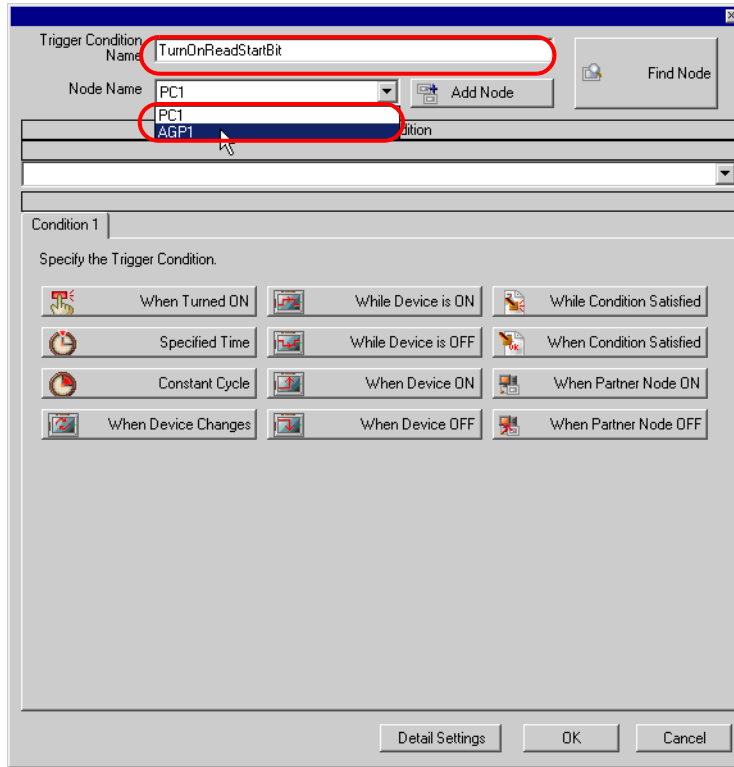
1 On the "Set ACTION Name/Parameter" screen, click the [Next] button.



2 Click the [New Trigger Condition] button.

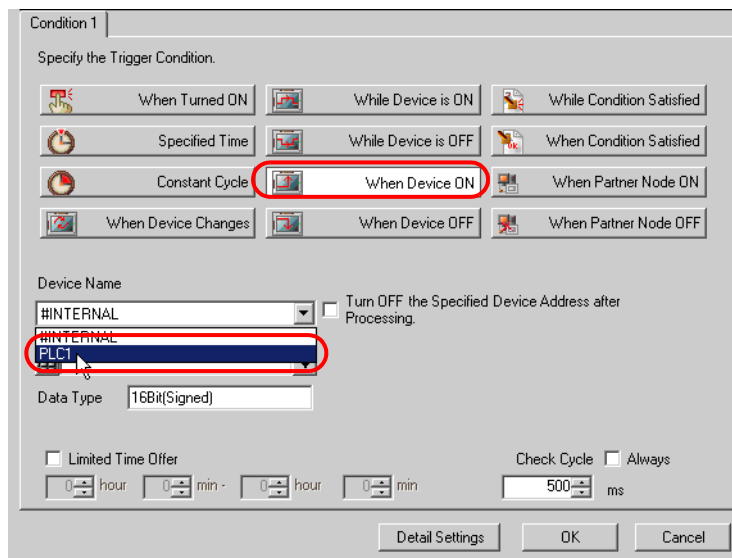


- Enter the trigger condition name "TurnOnReadStartBit" in [Trigger Condition Name], and select "AGP1" in [Node Name] which has the device to serve as the trigger condition.

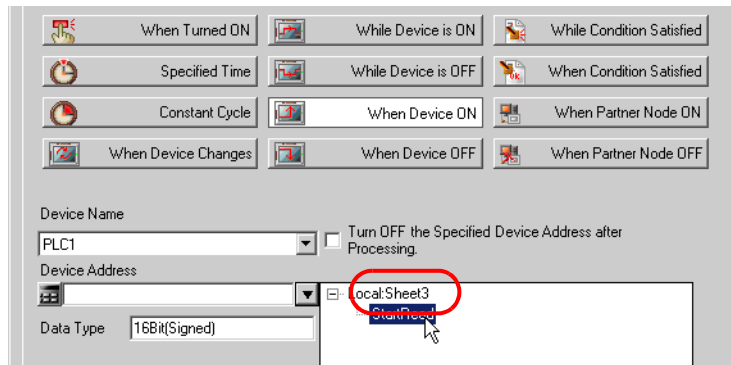


**NOTE** • Here, you are to specify the node having the device to be the trigger condition.  
 ☞ "33 Trigger Conditions"

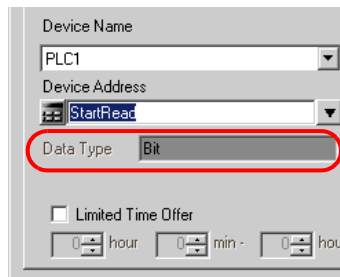
- Click the [When Device ON] button in the [Condition 1] tab and select "PLC1" for the device name.



- Click the [Device Address] list button and select "StartRead" for the symbol name of the device which serves as the trigger.



[Data Type] automatically appears after selection, too.




---

**NOTE** • You can also set trigger conditions by combining 2 different types of conditions ("And" condition or "Or" condition).

☞ "33 Trigger Conditions"

---

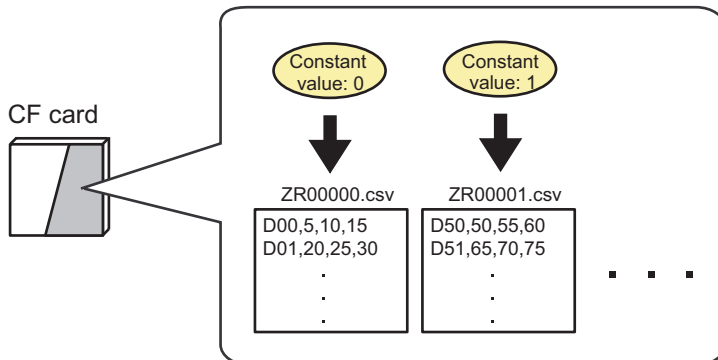
- Click the [OK] button.

This is the end of trigger condition settings.

### 17.1.6 Setting Data Received by ACTION

This step sets data to transfer in ACTION.

- NOTE** • If a data reading source is of a CF card or FEPROM, the transfer data set here is to be the file No. of the CF card or FEPROM. The file No. refers to the numerical value of \*\*\*\*\* of "ZR\*\*\*\*\*.csv".

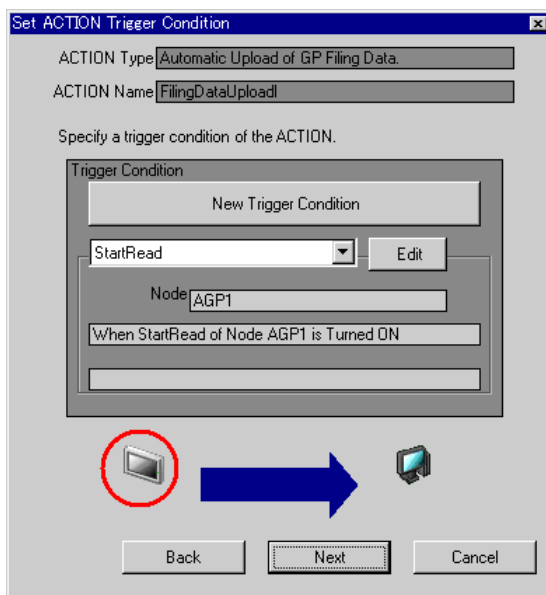


If you read from the backup SRAM, you can use any value for transfer data.

**Ex.**

- Constant value to transfer: 1

1 On the "Set ACTION Trigger Condition" screen, click the [Next] button.



- 2 After clicking [Constant Value], enter "1" in the text box for the constant value to transfer and "1" in [No.].

**Data settings to be received by ACTION**

ACTION Type: Automatic Upload of GP Filing Data

ACTION Name: FilingDataUpload

From the trigger node, this ACTION

Data of action

is received as a data to do the ACTION. As the data value, the device value of the trigger node or a constant is available. Specify the data.

Transfer Source

Node: AGP1

Device Name: #INTERNAL

Device Address

Constant Value

1

Data Type: 16Bit(Signed) No. 1

Back Next Cancel

**NOTE** • You can transfer stored values as data by specifying a symbol or a device address.

This is the end of the setting of data received by ACTION.

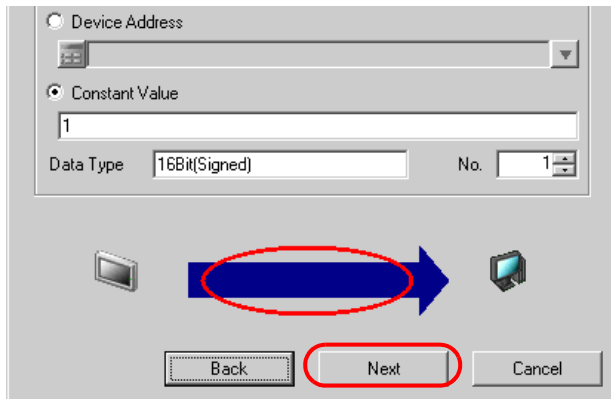
### 17.1.7 Setting ACTION Node/Process Completion Notification

This step sets the name of an ACTION node and the alert setting whether it should be tuned on or off when the ACTION is completed.

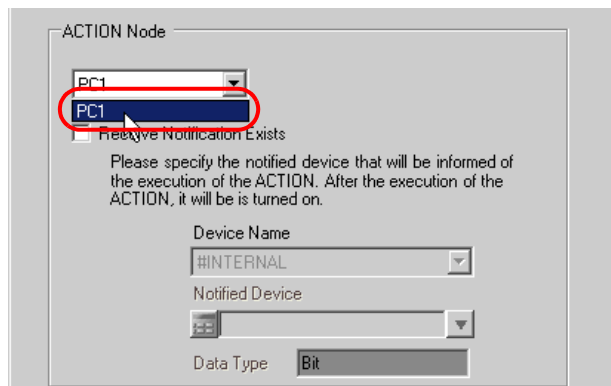
**Ex.**

- ACTION Node : PC1
- Receive Notification: OFF

1 On the "Data settings to be received by ACTION" screen, click the [Next] button.



2 Click the list button of [ACTION Node] and select "PC1" as a node where ACTION operates. Also, clear the check if [Receive Notification Exists] has been checked.



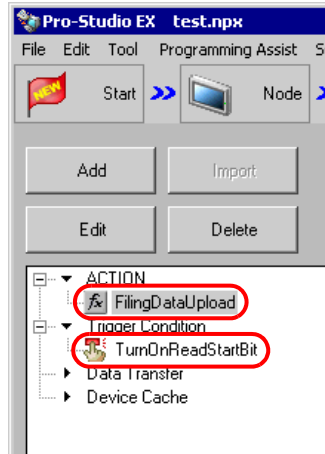
**NOTE** • When "Receive Notification Exists" is turned on, the specified bit device will be turned on when the ACTION is completed. This can be used as the trigger condition of the subsequent ACTION when you want to execute two or more ACTIONs sequentially.

☞ "33 Trigger Conditions"



**3** Click the [Complete] button.

The "Set ACTION Node/Process Completion Notification" screen will disappear. On the left of the screen, the ACTION and trigger condition name you set will appear.

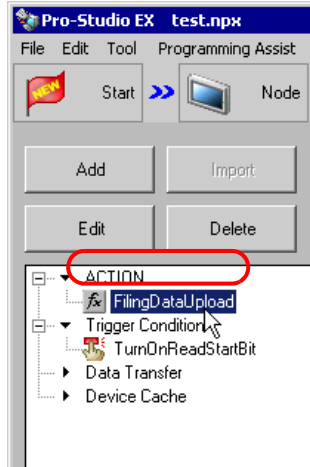


This is the end of the settings of the ACTION node and process completion notification.

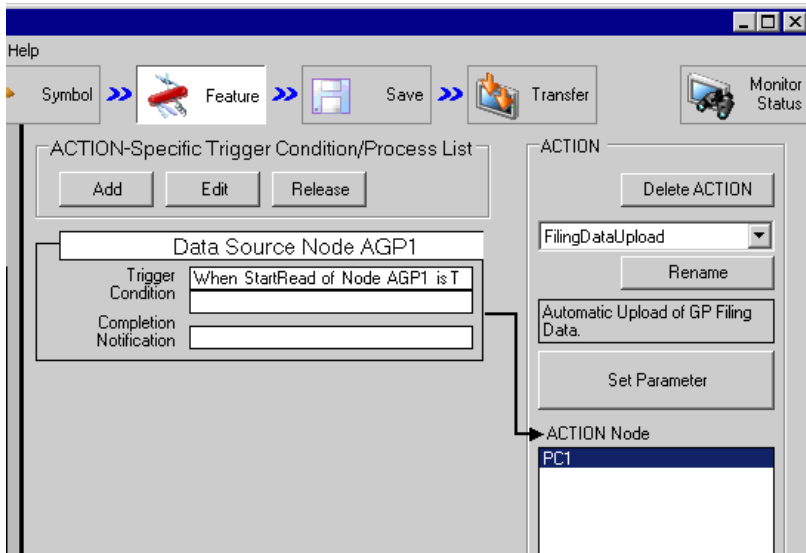
### 17.1.8 Verifying Setting Result

This step verifies setting results on the setting content list screen.

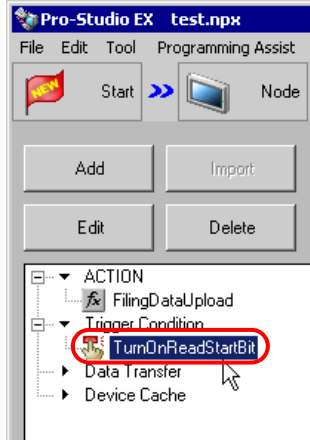
- 1 Select the ACTION name "FilingDataUpload" from the tree display on the left of the screen.



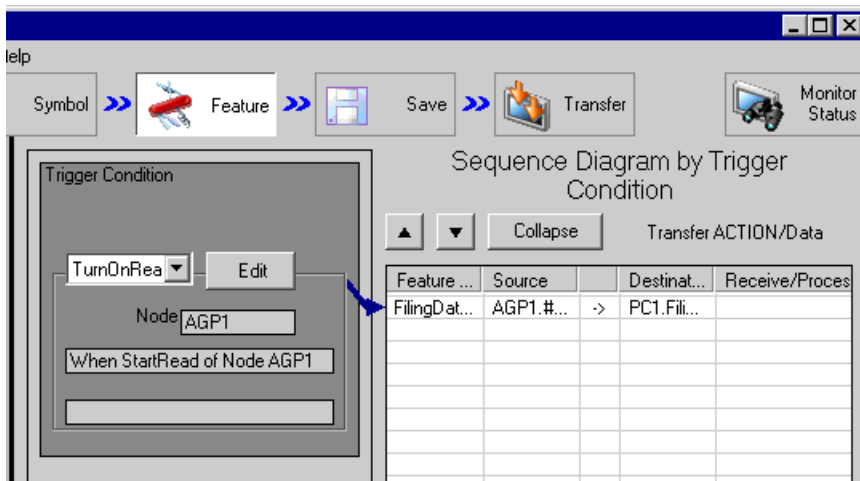
Confirm that the setting content appears on the right of the screen.



- 2 Select the trigger condition name "TurnOnReadStartBit" from the tree display on the left of the screen.



Confirm that the setting content appears on the right of the screen.



This is the end of the verification of the settings.

### 17.1.9 Saving a Network Project File

This step saves the current settings as a network project file and reloads to 'Pro-Server EX'.

Refer to "25 Saving" for details about saving a network project file.

- 
- IMPORTANT**
- 'Pro-Server EX' reads a created network project file, and then executes ACTION according to the settings in the file. The settings therefore need be saved in the network project file.
  - Be sure to reload the network project file to 'Pro-Server EX' If not, ACTION will not work.
- 

#### Ex.

- Path of network project file : Desktop\FilingData\_upload.npx
- Title : Filing data upload action

### 17.1.10 Transferring a Network Project File

This step transfers a saved network project file to entry nodes.

Refer to "26 Transferring" for details about transferring a network project file.

- 
- NOTE**
- Be sure to transfer a network project file. If not, ACTION will not work.
-

### 17.1.11 Executing ACTION

This step verifies that enabling a trigger condition activates ACTION and writes the filing data in backup SRAM of display unit on PC desktop as an Excel file.

	A	B	C	D
1	FILING DATA			
2	Description File no. 1			
3	No of Data	3		
4	No of Data	5		
5				
6	Data Forme	0		
7	Display For	0		
8	Code	0		
9	Block0	Block1	Block2	
10	ProductA	ProductB	ProductC	
11	5	10	20	
12	10	20	40	
13	15	30	60	
14	20	40	80	
15	25	50	100	
16				
17				

This is the end of the explanation of this ACTION.

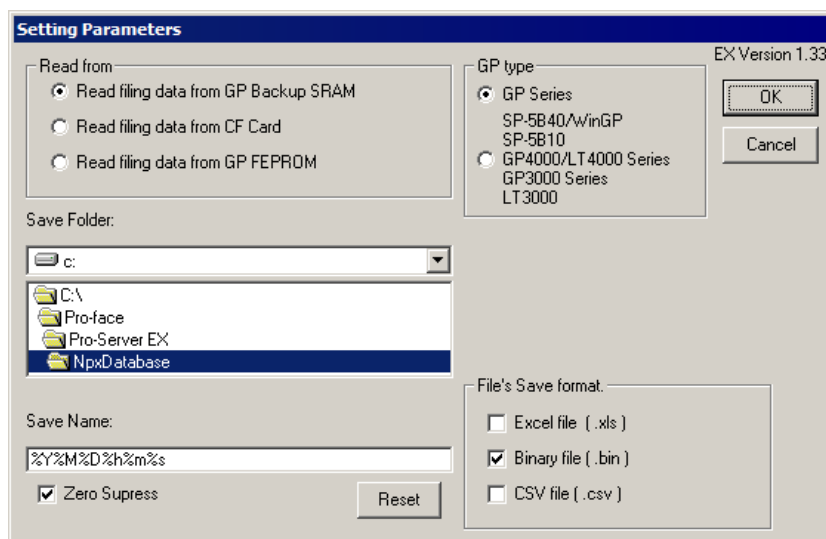
---

**NOTE** • If you want to achieve faster communication during ACTION, refer to "29 Tips for Faster Communication".

---

## 17.2 Setting Guide

This section explains how to set the parameters of ACTION.



Setting item	Setting content
Read from	<p>Select where to read the filing data from.</p> <ul style="list-style-type: none"> <li>• <b>Read filing data from GP Backup SRAM</b> Read filing data on the display unit's backup memory (SRAM).</li> <li>• <b>Read filing data from CF Card</b> Read filing data on the display unit's CF/SD Card. Transfer data defines the folder number. For example, when the transfer data is "2", read data from "ZE0002.BIN" on the CF Card.</li> <li>• <b>Read filing data from GP FEPR0M</b> Read filing data from the display unit's internal memory (screen area). Transfer data defines the folder number. For example, when the transfer data is "2", read data from folder "2" in internal memory.</li> </ul> <p><b>NOTE</b></p> <ul style="list-style-type: none"> <li>• When the GP Type is SP-5B40/WinGP, SP-5B10, GP4000/LT4000 Series, GP3000 Series or LT3000, you cannot select [Read filing data from GP FEPR0M].</li> <li>• For models without a CF/SD Card slot, even if you select [Read filing data from CF Card", you cannot read filing data.</li> </ul>
GP Type	Select the display unit network node whose filing data you are reading.
Save Folder	<p>Selects a folder to save read out filing data.</p> <p>C drive (C:) folder is to appear for initial setting.</p> <p>To change the drive to display, click the list button to select new one.</p>

Setting item	Setting content
Save Name	<p>Sets a file name to save. "%Y%M%D%h%m%s" is to appear for initial setting. If you do not change the file name, time data of PC is to set for "%" position.</p> <p><b>NOTE</b></p> <ul style="list-style-type: none"> <li>By specifying a macro code for the file name to save, you can set the file name as a node name or device data. ☞ "37.1 Restrictions on Names"</li> </ul>
Zero Suppress	<p>If you set the save file name as "%Y%M%D%h%m%s" and check this item, the digit 0 in "%" is not displayed. (Example) The file name which is written at 7:31 when specifying the save file name as "%h%m" Checked: ●●731●●.xls Not checked: ●0731●●.xls</p>
Reset	Returns [Saved File Name] to default ("%Y%M%D%h%m%s").
File's Save format	<p>Selects the saving format of read out filing data.</p> <ul style="list-style-type: none"> <li>Excel file (.xls) Saves in Excel book format.</li> <li>Binary file (.bin) Saves in binary file format. However, you cannot edit data saved in this format.</li> <li>CSV file (.csv) Saves in CSV file format.</li> </ul> <p><b>NOTE</b></p> <ul style="list-style-type: none"> <li>When saving in CSV file format, a PFG file storing the header information of a CSV file will be created in the folder where filing data is stored. An uploaded CSV file is saved in the folder of the same name as the PFG file.</li> </ul>

