

21



Saving Device Data Backup

21.1	Try to Save Device Data Backup	21-2
21.2	Setting Guide	21-6

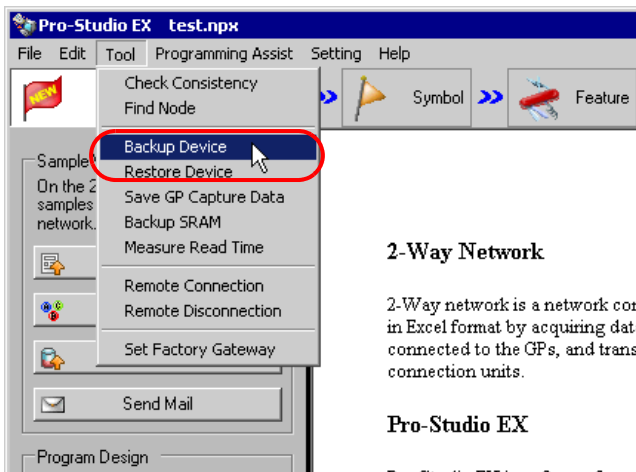
21.1 Try to Save Device Data Backup

The device data in Device/PLC can be easily backed up with simple settings.

The data subjected to backup is limited to sequential devices, however, you are recommended to use this function for backup or editing the data partially on the occasion of maintenance.

-
- | | |
|-------------|--|
| NOTE | • The data backed up or edited can be stored in Device/PLC. For the procedures, please refer to "22 Restoring Backup Device Data". |
|-------------|--|
-

- 1 Click [Backup Device] from [Tool] on the menu bar.



- 2 Set all items in the "Device Backup" screen and click the [Backup] button.

Device Backup

Read out current values of the specified node and save them.

Node Name: AGP1

Device/PLC: PLC1

Device Address: Sheet3.PLC1Data

Backup Number: 5

Data Format:

- Bit
- 16Bit
- 32Bit
- Unsigned Dec
- Signed Dec
- Hex

Save Folder: C:\Program Files\Pro-face\Pro-Server EX\NF\Date

File Name: %NODE_%DEVICE

File Format:

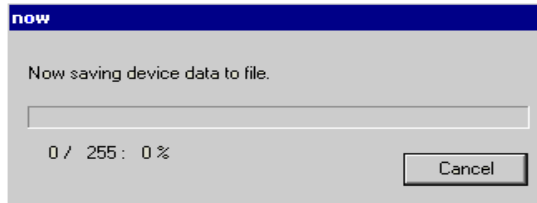
- BIN
- CSV

Buttons: Backup, Cancel

NOTE The data saving format can be either BIN (binary) or CSV, having the features given below.

- BIN
Suited for saving large volumes of data. But you cannot confirm or edit the backup data on PC.
- CSV
You can confirm or edit the backup data using Excel or any application that supports the CSV file.

The "now" screen is displayed, indicating the processing status of backup.

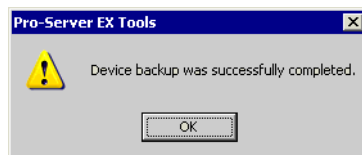


NOTE • The set contents in the "Device Backup" screen are incorrect, the following message appears:

Message	Required action
Designate number up to 255 for data backup in the BIT format.	Reset the value in the [Backup Number] in the range of 1 to 255, and then execute backup.
You cannot execute bit-type symbol backup other than in the BIT format.	If you designated a BIT symbol in the [Device Address] field, you cannot execute backup in formats other than BIT. Reset the format to "BIT", and then execute backup.
You cannot execute symbol backup other than a bit-type in the BIT format.	If you designated a symbol other than a bit-type in the [Device Address] field, you cannot execute backup in BIT. Reset the format to something else but "BIT", and then execute backup.

When the saving process has been completed successfully, the message of "Device backup was successfully completed" appears.

Click the [OK] button to finish the process.



Below are the data contents for CSV device data.

Node name, (Node name for backup)
Device/PLC name (Device/PLC of backup source)
Device name, (Device address to start backup)
Number, (Number of backup data)
Device length, (Bit length of the backup device)
Data type, unsigned decimal
Date, (Backup date)

Data, comment

(Value of the first device address), (Name of the first device address)
(Value of the second device address), (Name of the second device address)

The backup date should be written in a format of "(year)/(month)/(day) (space) (hour):(minute)". Note that if only (minute) shows one digit, use 0 (zero) in the second digit.

21.2 Setting Guide

Setting item	Setting content
Node Name	Select the node reading the Device Backup data. NOTE <ul style="list-style-type: none"> The list indicates the nodes registered in the network project file under loading.
Device/PLC	Select the Device/PLC reading the Device data.
Device Address	Enter the leading device address or symbol in the device from which you read the data.
Backup Number	Enter the number of backup device. NOTE <ul style="list-style-type: none"> The maximum number of device that you can backup depends on the device data type.
Data Format	Select the type of saved data. When [CSV] is selected on [File Format], set the data notation.
Save Folder	Set the folder that you wish to save file. Click the [Browse] button or enter the folder name directly to select the folder.
File Name	Enter the file name to be saved. By default, the file name will vary depending on the node name, the device address, the saved type and the data type you select.

Setting item	Setting content
File Format	<p>Select the data saving format.</p> <ul style="list-style-type: none">• BIN Save as binary data. <p>NOTE</p> <ul style="list-style-type: none">• Suited for saving large volumes of data. But you cannot confirm or edit the backup data on PC. <ul style="list-style-type: none">• CSV Save as CSV data. <p>NOTE</p> <ul style="list-style-type: none">• You can confirm or edit the backup data on PC.

