

# 29



# Starting 'Pro-Server EX' in the Service Mode

29.1	Try to Start 'Pro-Server EX' in the Service Mode .....	29-2
29.2	Restrictions .....	29-9

## 29.1 Try to Start 'Pro-Server EX' in the Service Mode

There are two types of mode to start 'Pro-Server EX' in: "Normal Mode" and "Service Mode". "Normal Mode" is set just after installation. Log on to Windows as well as normal applications to start 'Pro-Server EX' (Refer to "3.1 Starting 'Pro-Studio EX'" for more details on how to start in the normal mode).

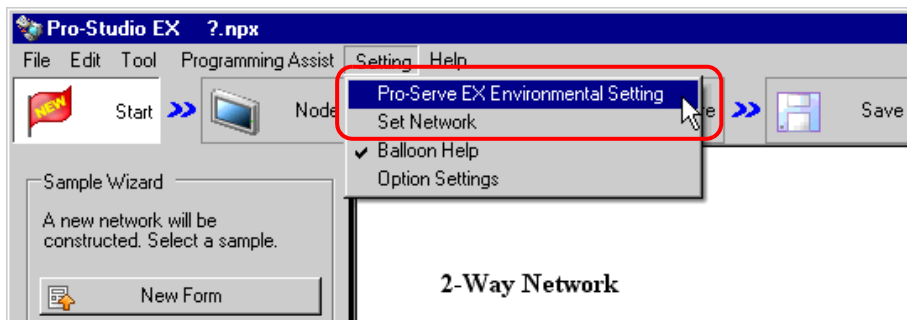
When 'Pro-Server EX' is set to start in "Service Mode", 'Pro-Server EX' starts up with Windows. You do not need to log on to Windows to start it. This function is useful when you use 'Pro-Server EX' for system operation.

- 
- IMPORTANT**
- When starting 'Pro-Server EX' in the "Service Mode", you cannot use the "Excel Form" or "Creating a Form Using Excel" Actions.
  - "Service Mode" is not available when using WinGP SDK.
  - There are further restrictions. Refer to "29.2 Restrictions" for more details.
- 

### 29.1.1 Settings to Start 'Pro-Server EX' in the Service Mode

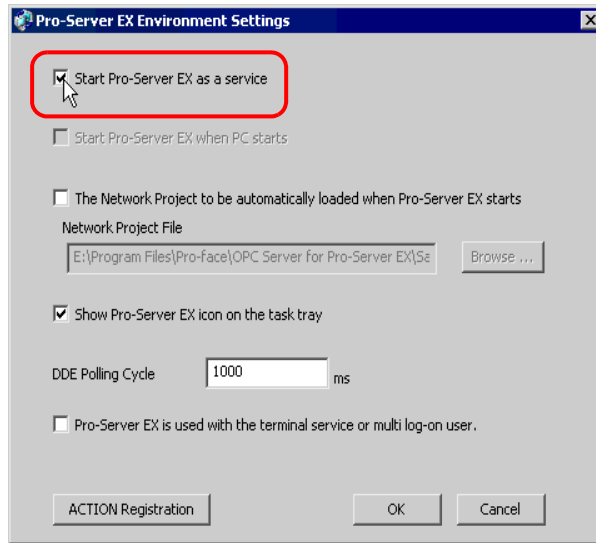
To start 'Pro-Server EX' as Windows service (in the "Service Mode"), start 'Pro-Studio EX' first and set the operation mode of 'Pro-Server EX' to "Service Mode".

- 1 Click [Pro-Server EX Environmental Setting] under [Setting] menu.



- 
- NOTE**
- You can also select [All Programs] - [Pro-face] - [Pro-Server EX] - [Pro-Server EX Environmental Setting] from the Windows [Start] button to display the [Pro-Server EX Environmental Setting] screen.
-

2 Check [Start Pro-Server EX as a service].

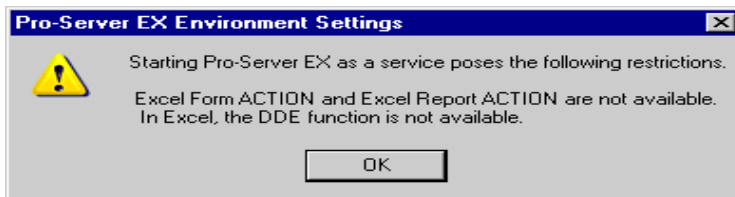


---

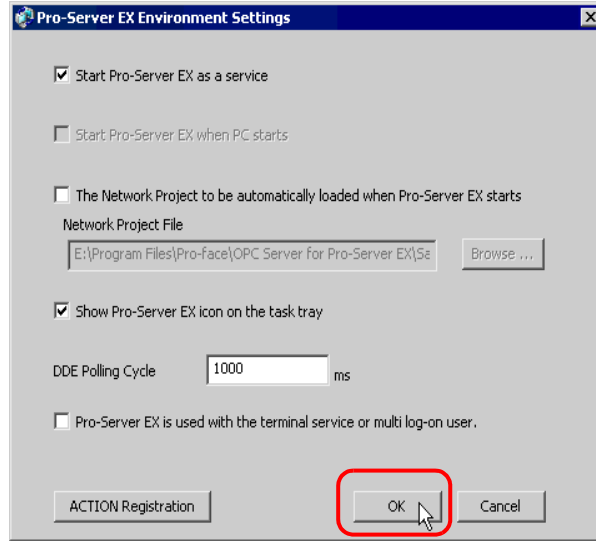
**NOTE** • To start 'Pro-Server EX' in "Normal Mode", uncheck [Start Pro-Server EX as a service].

---

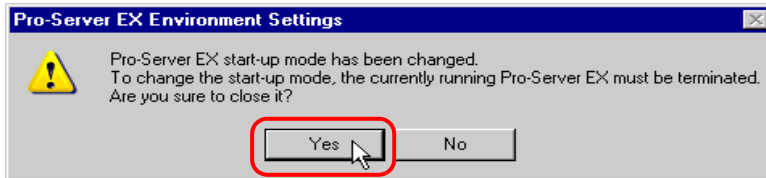
3 When you check [Start Pro-Server EX as a service], the dialog box to notify you of restrictions is displayed. Click the [OK] button.



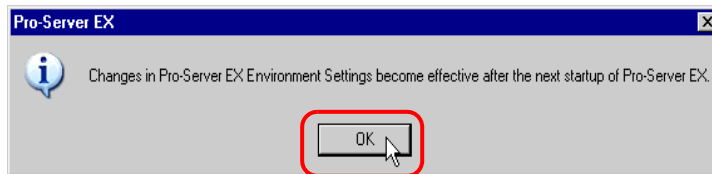
4 Click the [OK] button.



If you change the [Start Pro-Server EX as a service] option while 'Pro-Server EX' is running, the following dialog box is displayed: Click the [Yes] button.



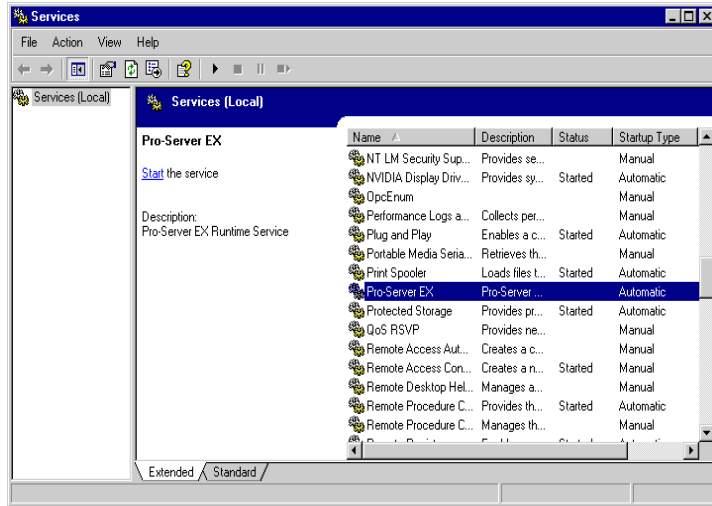
5 Click the [OK] button.



- 
- NOTE** • If you have started 'Pro-Server EX', exit and start it again.  
In the Normal Mode: Startup of 'Pro-Server EX'  
In the Service Mode: 29.1.2 Starting and Closing 'Pro-Server EX' in the "Service Mode"
-

**NOTE**

- When you check [Start Pro-Server EX as a service] ("Service Mode"), the "Startup Type" of 'Pro-Server EX' is set to "Automatic" on the [Services] screen. When you start or restart your PC next time, 'Pro-Server EX' automatically starts.



- When you uncheck [Start Pro-Server EX as a service] (normal mode), the "Startup Type" of 'Pro-Server EX' is set to "Manual" on the [Services] screen.

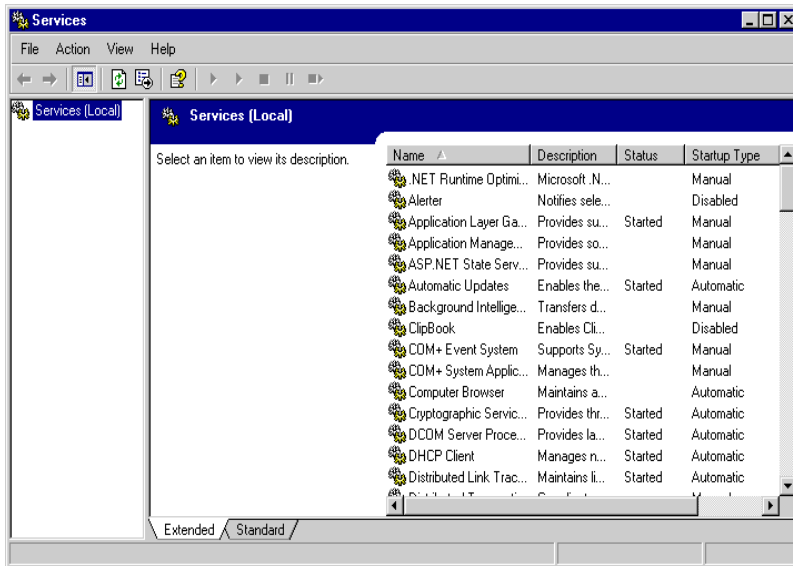
## 29.1.2 Starting and Closing 'Pro-Server EX' in the "Service Mode"

When you set the starting method of 'Pro-Server EX' to "Service Mode", it automatically starts when you start or restart your PC. However, just after you change the starting method or you close it manually, start it as follows:

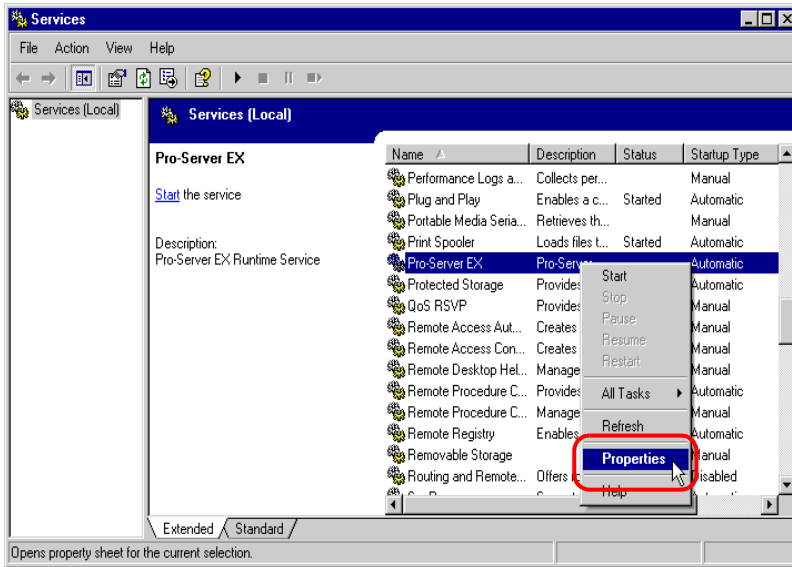
- 
- IMPORTANT**
- Log on to Windows with the user name of "Administrator" or of the equivalent administrator authority. Refer to the operation manual of the OS for the user authority.
  - When you set the starting method of 'Pro-Server EX' to "Normal Mode", you cannot use this method. Refer to "29.1 Try to Start 'Pro-Server EX' in the Service Mode" and change to "Service Mode".
- 

- NOTE**
- When 'Pro-Server EX' is set to start in "Service Mode", you can also click on the 'Pro-Server EX' icon on the desktop or select 'Pro-Server EX' from the [Start] button on Windows to start it.
  - You can also select 'Close Pro-Server EX' from the [Start] button on the task bar to close it.
- 

- 1 After you click the [Start] button on the task bar, click "Control Panel" from "Settings" ("Performance and Maintenance" under "Control Panel" depending on the OS), and select "Services" under "Administrative Tools".

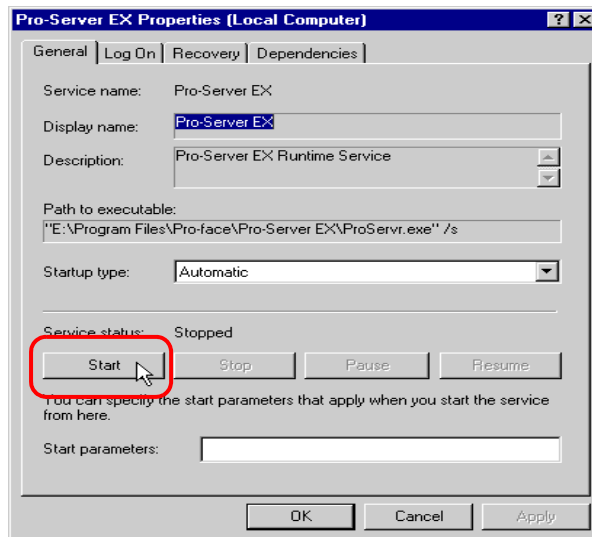


2 Right-click on 'Pro-Server EX' and select [Properties] from the menu.



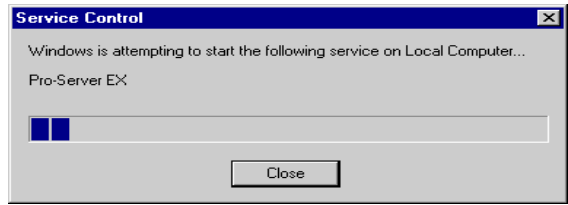
**NOTE** • You can also select [Start] from the menu to start 'Pro-Server EX'. When you select [Stop] or [Restart], you can close or restart 'Pro-Server EX'.

3 Click the [Start] button on the [General] tab.

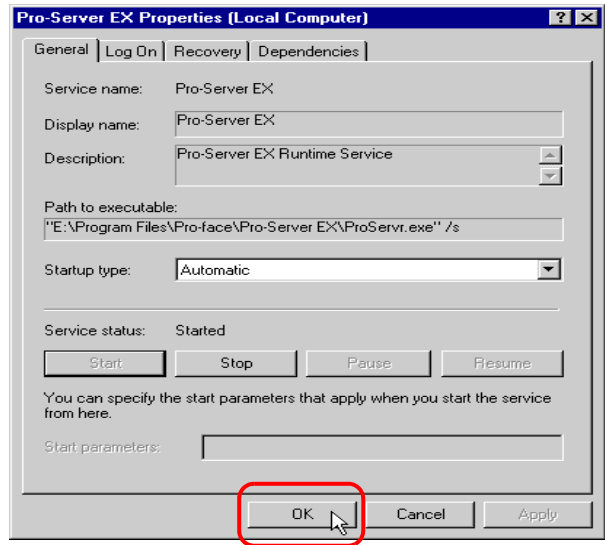


**NOTE** • You can click the [Stop] button to close 'Pro-Server EX'.  
• If the "Startup type" is not set to "Automatic", 'Pro-Server EX' does not start automatically when starting or restarting a PC. To start it automatically, set the "Startup type" to "Automatic".

The "Service Control" screen is displayed.



4 Click the [OK] button.





## 29.2 Restrictions

The following restrictions apply when starting 'Pro-Server EX' in "Service Mode".

- Be sure to check "Allow service to interact with desktop". If you uncheck it, operation cannot be guaranteed. Confirm the setting as follows:
  1. After you click the [Start] button on the task bar, select "Administrative Tools" and "Services" under the "Control Panel".
  2. Right-click on 'Pro-Server EX' and select [Properties] from the menu.
  3. Click the [Log On] tab and confirm "Allow service to interact with desktop" is checked. If unchecked, check it.
  4. Click the [OK] button.
- Do not use the "Excel Form" or "Creating form using Excel" Actions. Operation cannot be guaranteed if you use them.
- Do not use the "DDE function" of 'Excel'. If you use it, Excel freezes.

