

# 21



# Restoring Backup Device Data

21.1	Try to Restoring Backup Device Data .....	21-2
21.2	Setting Guide .....	21-4

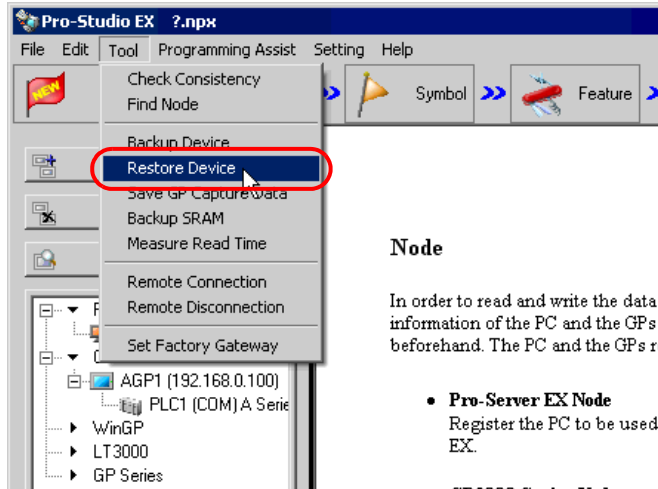
## 21.1 Try to Restoring Backup Device Data

You can restore the backup device data to the source device.

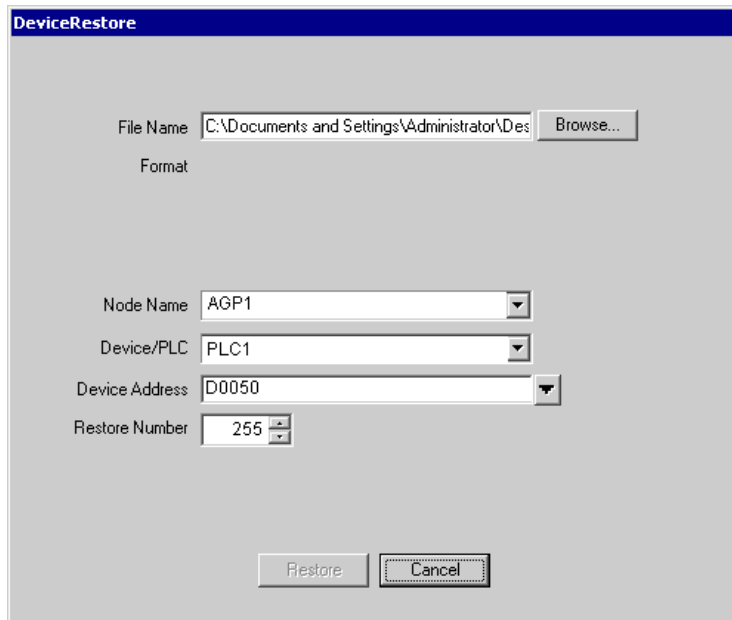
**NOTE**

- Restoring is available for the sequential device data.
- For the details of device data backup, please refer to "20 Saving Device Data Backup".

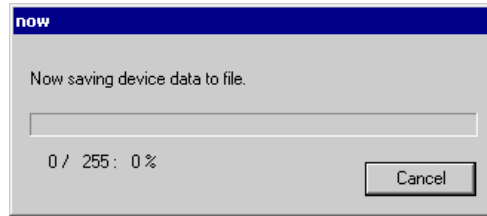
1 Click [Restore Device] from [Tool] on the menu bar.



2 Set all items in the "Device Restore" screen and click the [Restore] button.



The "now" screen is displayed, indicating the processing status of restoration.

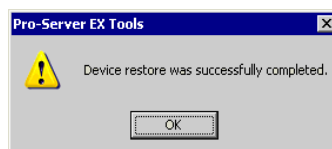


**NOTE** • The set contents in the "Device Restore" screen are incorrect, the following message appears:

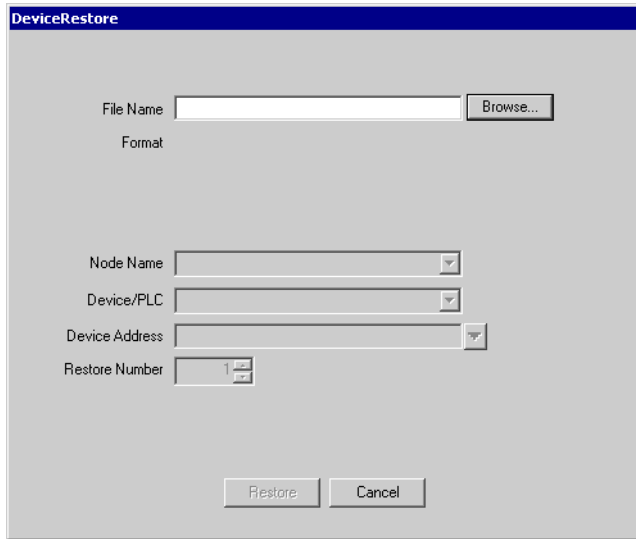
Message	Required action
You cannot designate a bit-type symbol to data restoration other than in the BIT format	If you designated a BIT symbol in the [Device Address] field, you cannot restore data in formats other than BIT. Reset the symbol other than in "BIT" in the [Device Address] field, and then restore.
You cannot designate a symbol other than in BIT to data restoration in the BIT format.	If you designated a symbol in formats other than BIT in the [Device Address] field, you cannot restore BIT data. Reset the BIT symbol in the [Device Address] field, and then restore.
The designated file is incorrect.	If you designate a Bit backup data file by 'Pro-Server' of the older version (V4.0) in the [File Name] field, you cannot restore it. Reset other file in the [File Name] field, and then restore.

When the saving process has been completed successfully, the message of "Device restore was successfully completed." appears.

Click the [OK] button to finish the process.



## 21.2 Setting Guide



Setting item	Setting content																																
File Name	Set the file name where the device data is backed up. Click the [Browse] button or enter the file name directly to select the file.																																
Format	<p>If you designate a file in the [File Name] field, the following table showing formats corresponding to files will appear.</p> <table border="1"> <thead> <tr> <th>File format</th> <th>Bit length</th> <th>Writing format</th> <th>Display</th> </tr> </thead> <tbody> <tr> <td rowspan="3">Binary</td> <td>1</td> <td></td> <td>Bit</td> </tr> <tr> <td>16</td> <td></td> <td>16 bits</td> </tr> <tr> <td>32</td> <td></td> <td>32 bits</td> </tr> <tr> <td rowspan="6">CSV</td> <td>1</td> <td></td> <td>Bit</td> </tr> <tr> <td rowspan="3">16</td> <td>Unsigned decimal</td> <td>16 bits unsigned decimal</td> </tr> <tr> <td>Signed decimal</td> <td>16 bits Signed decimal</td> </tr> <tr> <td>Hexadecimal</td> <td>16 bits hexadecimal</td> </tr> <tr> <td rowspan="3">32</td> <td>Unsigned decimal</td> <td>32 bits unsigned decimal</td> </tr> <tr> <td>Signed decimal</td> <td>32 bits Signed decimal</td> </tr> <tr> <td>Hexadecimal</td> <td>32 bits hexadecimal</td> </tr> </tbody> </table>	File format	Bit length	Writing format	Display	Binary	1		Bit	16		16 bits	32		32 bits	CSV	1		Bit	16	Unsigned decimal	16 bits unsigned decimal	Signed decimal	16 bits Signed decimal	Hexadecimal	16 bits hexadecimal	32	Unsigned decimal	32 bits unsigned decimal	Signed decimal	32 bits Signed decimal	Hexadecimal	32 bits hexadecimal
File format	Bit length	Writing format	Display																														
Binary	1		Bit																														
	16		16 bits																														
	32		32 bits																														
CSV	1		Bit																														
	16	Unsigned decimal	16 bits unsigned decimal																														
		Signed decimal	16 bits Signed decimal																														
		Hexadecimal	16 bits hexadecimal																														
	32	Unsigned decimal	32 bits unsigned decimal																														
		Signed decimal	32 bits Signed decimal																														
Hexadecimal		32 bits hexadecimal																															

Setting item	Setting content
Node Name	Select the node name of restoring destination. <b>NOTE</b> <ul style="list-style-type: none"><li>• [MEMO] The list indicates the nodes registered in the network project file under loading.</li></ul>
Device/PLC	Select the Device/PLC of restoring destination.
Device Address	Enter the device address (or symbol) to start the restoration. By default, the leading address saved in the file is displayed when you set the file name.
Restore Number	Enter the number of restoration data. By default, the number of data saved in the file is displayed when you set the file name.

