

GP-3300 Series Users

When using a GP-3300 Series model before Rev*-4, there is a selection of GP-Pro EX Version 2.2 features that are unsupported.

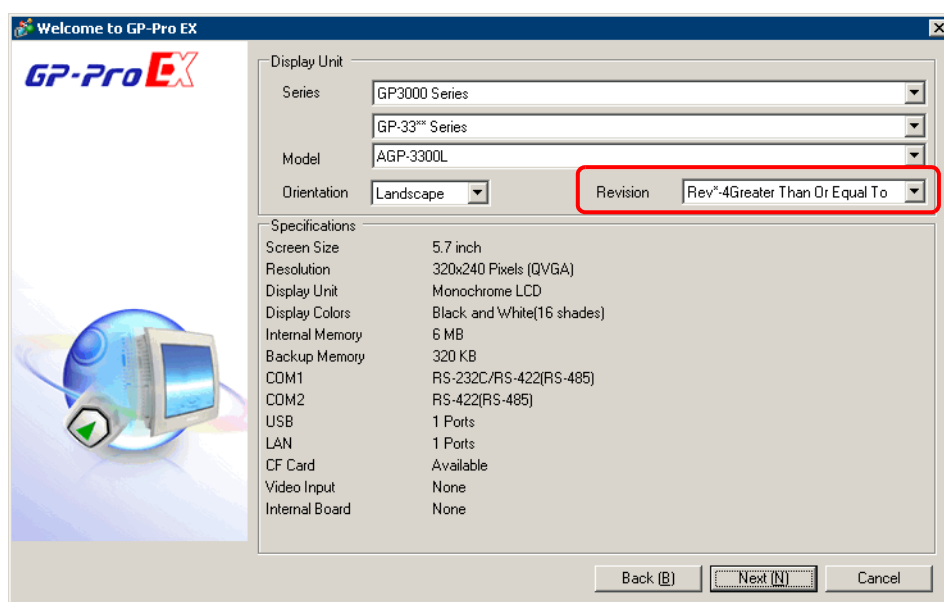
As a result, if you transfer to a display unit with the [Revision] set to [Rev*-4 Greater Than Or Equal To], it may not run properly on the GP. Before transferring, data stored on the GP is also deleted.

When using a model before Rev*-4, please make sure you set [Revision] to [Rev*-4 Less Than].

Or, when designing the screen display do not use any features unsupported by models before Rev*-4.

MEMO

- References to transfer operations include all transfer operations, such as CF Card Connection, Memory Loader, and transferring between the computer and display unit.



Model

AGP-3300L/AGP-3300L-FN1M/AGP-3300L-D81/AGP-3300L-CA1M

AGP-3300S/AGP-3300S-D81/AGP-3300S-CA1M

AGP-3300T/AGP-3300T-FN1M/AGP-3300T-D81/AGP-3300T-CA1M

AGP-3301L

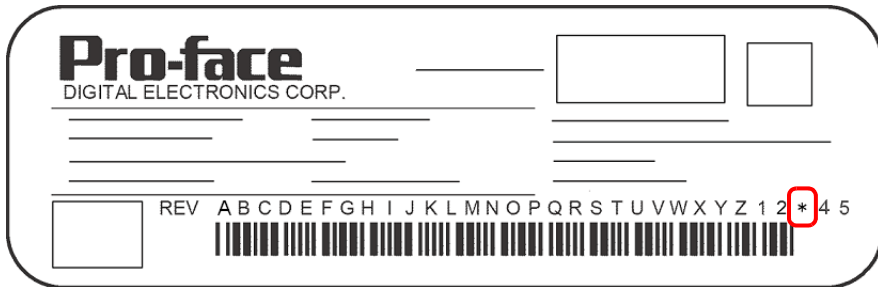
AGP-3301S

Features Unsupported by GP-3300 Series Rev*-4

- Animation
- XY Scatter Graph
- Bulletin Message
- Ethernet Multilink
- Selector List part
- Indirect specification of upper and lower limits of alarms in Sampling Settings
- Changing passwords online

Checking the revision number

You can check the GP revision number by viewing the label. The following example indicates Rev. 3, as position "3" has an asterisk "*".



MEMO

- For Rev. 4 or later, on the GP there is a label marked with R4.

