

35



Adjusting the Time and Screen Saver

This chapter describes how to enable, adjust, and disable the time data and screen saver functions.

Please start by reading "35.1 Settings Menu" (page 35-2), and then turn to the corresponding page.

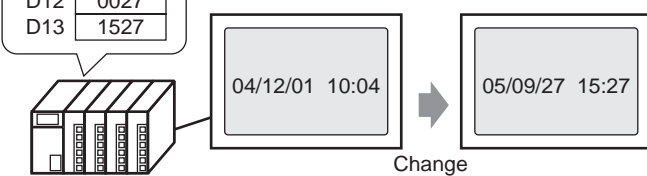
35.1	Settings Menu	35-2
35.2	Adjusting the Time	35-4
35.3	Using the Screen Saver	35-8
35.4	Restrictions	35-12

35.1 Settings Menu

Adjusting the Time

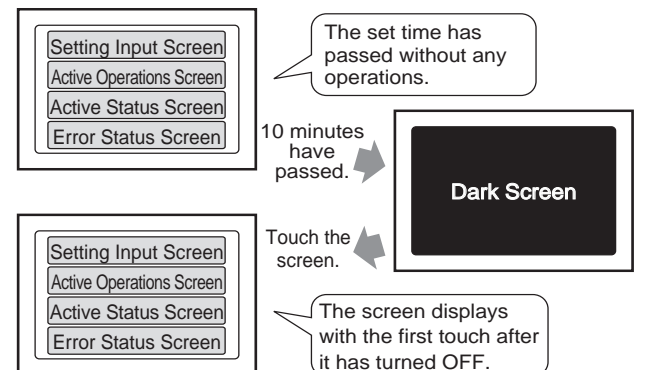
Set a new data to the device/PLC.

D10	8005
D11	0009
D12	0027
D13	1527



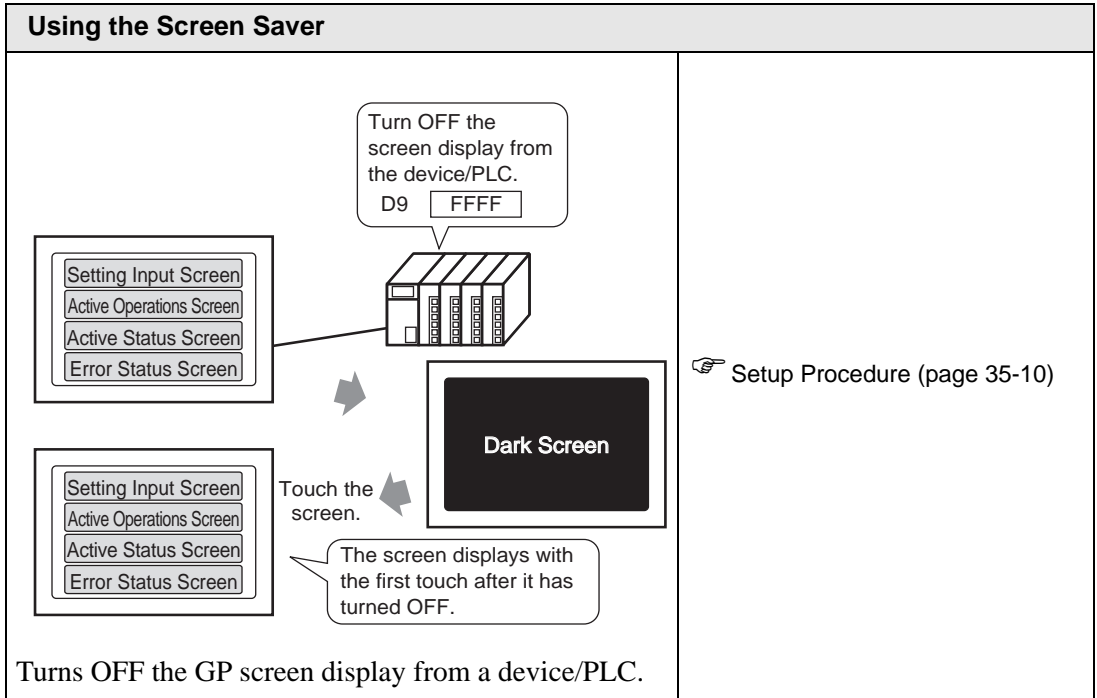
- ☞ Setup Procedure (page 35-5)
- ☞ Introduction (page 35-4)

Using the Screen Saver



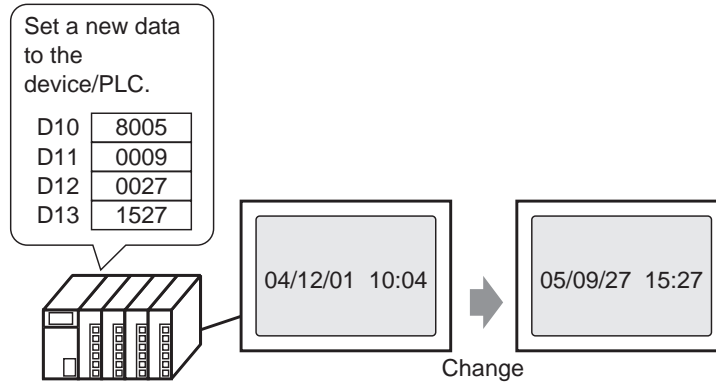
Turns OFF the screen display if no interaction occurs for a period of time.

- ☞ Setup Procedure (page 35-8)



35.2 Adjusting the Time

35.2.1 Introduction

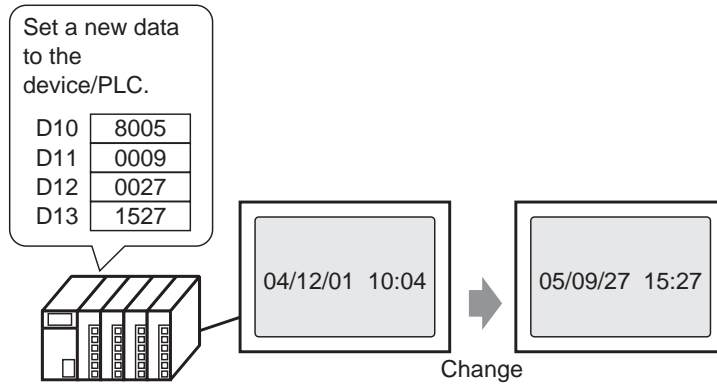


Sets the GP clock data (BCD) from a device/PLC.

35.2.2 Setup Procedure

NOTE

- Please refer to the Settings Guide for details.
 ☞ "5.17.6 [System Settings] Setting Guide ◆ System Area Settings" (page 5-174)

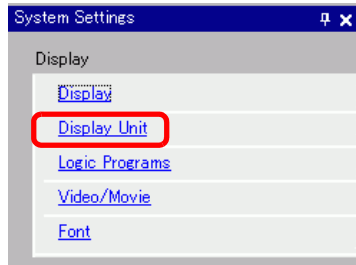


1 Select the [System Settings] tab to display [System Settings].


NOTE

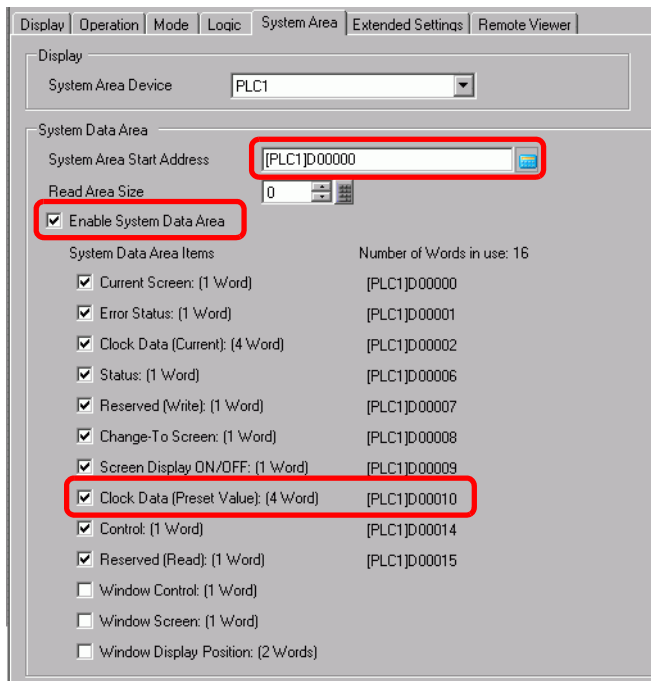
- If the [System Settings] tab is not displayed in the workspace, on the [View (V)] menu, point to [Workspace (W)], and then click [System Settings (S)].

2 On the [Display] menu, select [Display Unit].

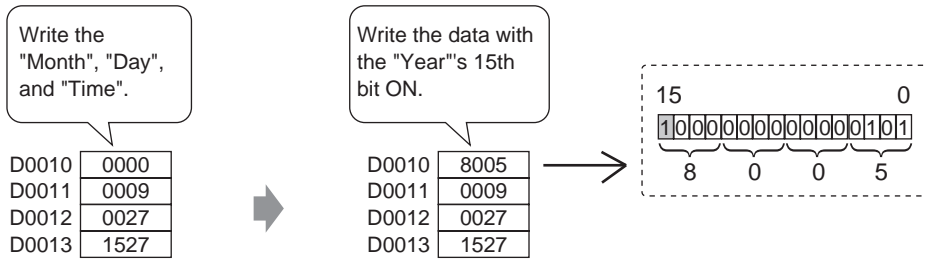


3 Select the [System Area] tab. In the [System Data Area], set [System Area Start Address] and select the [Enable System Data Area] check box.

Select the [Clock Data (Preset Value): (4 Words)] check box.



4 Write clock data to the address displayed in [Clock Data (Preset Value):(4 Words)] with BCD. Clock data is rewritten if a data rewrite flag (for example, D0010 bit 15) changes (OFF to ON or ON to OFF). The procedure for writing data is as follows.



NOTE

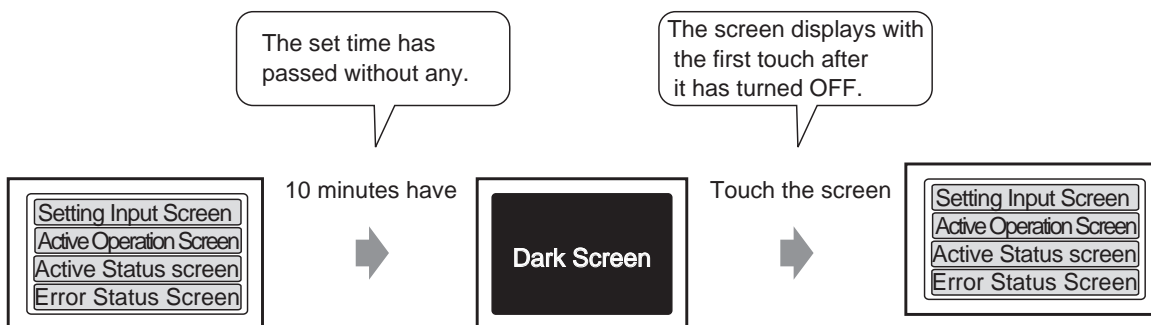
- When the 15th bit is ON, enter data to turn OFF the 15th bit to update the time.
- You cannot change the "Seconds" data. It is reset to "0" when the clock data is rewritten.

35.3 Using the Screen Saver

35.3.1 Turning off the Screen When Not in Use

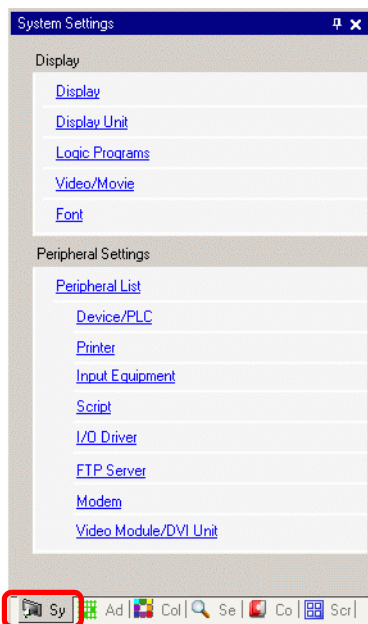
NOTE

- Please refer to the Settings Guide for details.
 ☞ "5.17.6 [System Settings] Setting Guide ◆ Display Settings" (page 5-147)



Turns OFF the screen display if no interaction occurs for a period of time.

- 1 Select the [System Settings] tab to display [System Settings].

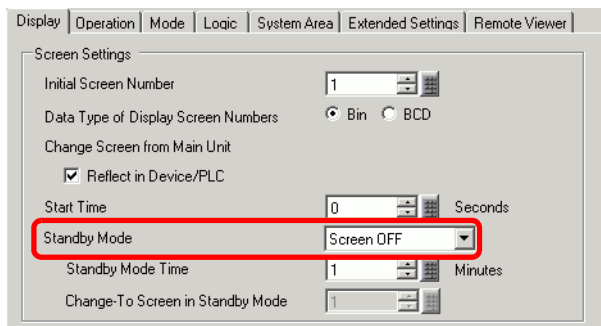

NOTE

- If the [System Settings] tab is not displayed in the workspace, on the [View (V)] menu, point to [Workspace (W)], and then click [System Settings (S)].

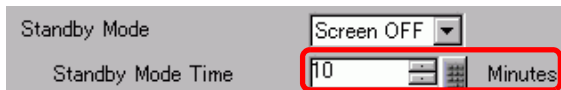
2 On the [Display] menu, select [Display Unit].



3 On the [Display] tab, set the [Standby Mode] to [Screen OFF] in [Screen Settings]. (For example, Screen OFF)



4 In [Standby Mode Time], set the time to wait between the last touch and turning OFF the screen. (For example, 10)



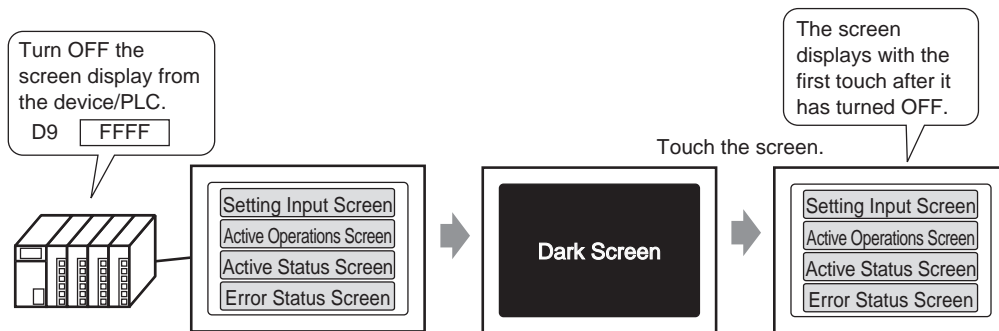
NOTE

- If there is no screen operation or alarm occurrence for the [Standby Mode Time], the screen display turns OFF. To display a screen, touch the screen once.

35.3.2 Turning OFF the Screen from a Device/PLC

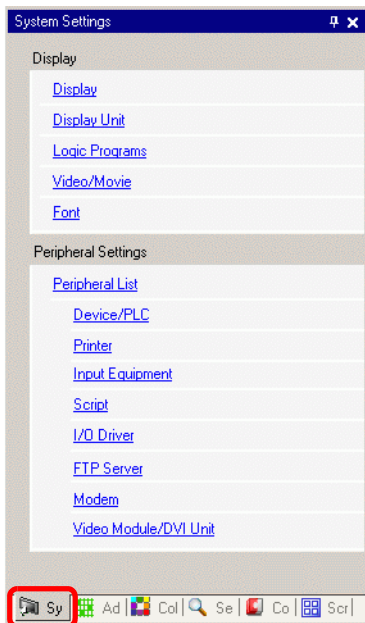
NOTE

- Please refer to the Settings Guide for details.
 ↳ "5.17.6 [System Settings] Setting Guide ◆ System Area Settings" (page 5-174)



Turns OFF the GP screen display from a device/PLC.

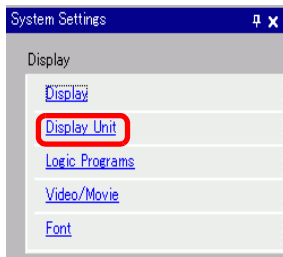
- 1 Select the [System Settings] tab to display [System Settings].



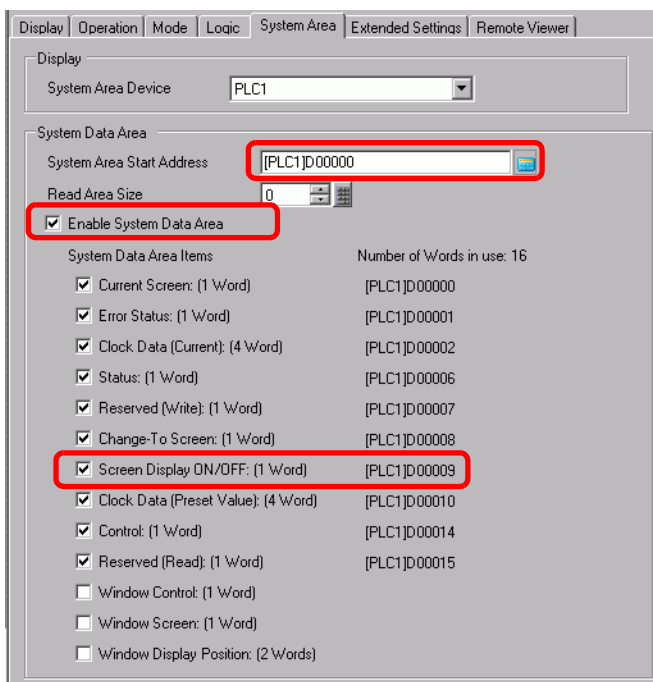
NOTE

- If the [System Settings] tab is not displayed in the workspace, on the [View (V)] menu, point to [Workspace (W)], and then click [System Settings (S)].

2 On the [Display] menu, select [Display Unit].



3 Select the [System Area] tab. In the [System Data Area], set [System Area Start Address] and select the [Enable System Data Area] check box. Select the [Screen Display ON/OFF: (1 Word)] check box.



4 Write "FFFFh" to the address displayed in [Screen Display ON/OFF: (1 Word)]. The GP screen display turns OFF.

NOTE

- To display a screen, touch the screen once.

35.4 Restrictions

35.4.1 Restrictions for Adjusting the Clock

- Clock data is written to if the data rewrite flag changes. (OFF to ON or ON to OFF) You cannot change the "Seconds" data. It is reset to "0" when the clock data is rewritten.
For example, October 16, 2005 9:57 PM
The current data in the [Clock Data (Preset Value)] address is 0000.
Write the "Month", "Day", and "Time" into the following addresses.
 - Write 0010 to [Clock Data (Preset Value)] + 1.
 - Write 0016 to [Clock Data (Preset Value)] + 2.
 - Write 2157 to [Clock Data (Preset Value)] + 3.In the [Clock Data (Preset Value)] addresses, turn ON the 15th bit under "Year" (data 8005) and the clock data is rewritten.
- The clock data's [Data Type] is set to BCD.
- When setting the clock data using the memory link method, use the five addresses 0004 to 0008 to directly store the data, such as year, month, day, hour, and minute, respectively.

35.4.2 Restrictions for Turning OFF the Screen

- With the [Standby Mode Time] settings, if the [Screen Display ON/OFF: (1 Word)] address data is "0000h" and none of the following actions occur set length of time, the screen turns off:
 1. Changing the screen by touch or from the device/PLC.
 2. Operating the screen by touch.
 3. Configure Alarm Messages to display as scroll banners.
 4. Display an error message.
- Set the standby mode time within the range of 1-255.
- The first touch input after the screen display turns OFF turns the screen display back ON.
- When turning OFF the screen display from a device/PLC, the screen display disappears if the value "FFFF" is stored in the address set to [Screen Display ON/OFF:(1 Word)]. The screen is displayed when the value is "0h". Values other than "FFFFh" and "0h" are reserved.