

# 2



# Using GP-Pro EX

This chapter covers compatibility, project conversion, and how to find software and documentation updates. Compatibility and project conversion applies to projects moving from GP-Pro/PBIII to GP-Pro EX.

2.1	Compatibility with Pro-face® Software .....	2-2
2.2	How to Update Software .....	2-21

## 2.1 Compatibility with Pro-face® Software

This section describes how to operate the Project Converter, which converts Project Files (\*.prw) created with the Pro-face GP-PRO/PBIII for Windows application into GP-Pro EX Project files (\*.prx). This section also highlights important information regarding compatibility.

---

**IMPORTANT**

- For information on compatibility and restrictions between GP-PRO/PBIII for Windows and GP-Pro EX, refer to Pro-face Support Site "Otasuke Pro!".

URL <http://www.pro-face.com/otasuke/>

 Click Me!

---

### 2.1.1 Compatible Software Versions

The Project Converter converts a data set subsidiary to project files (\*.prw) created by GP-PRO/PBIII for Windows software Ver.1.0 to Ver.7.0.

---

**IMPORTANT**

- Project files (\*.prw) created by GP-PRO/PBIII for Windows Ver.7.1 and Ver.7.2 are converted except the features added to each software version.

---

### 2.1.2 Model Names Before and After Conversion

After conversion, the [GP Type], which indicates the model name in the GP-PRO/PBIII for Windows project file (\*.prw), in GP-Pro EX is referred to as [Display Type]. The model name may also change. The compatible models include GP70/77R/2000 Series, GLC Series, LT Series, and ST400 Series.

---

**IMPORTANT**

- Not compatible with Factory Gateway.
- For project files created by GP-PRO, GP-PROII, GP-PROIII, GP-PRO/PBIII (DOS), and Parts Box, convert the screen data into \*.prw in GP-PRO/PBIII for Windows and then execute the GP-Pro EX's project converter.
  - ☞ GP-PRO/PBIII for Windows Operation Manual "Chapter 12 Using Conventional Data"

■ GP70/77R Series

Convert From			Convert To	
Series Name	Type	GP Type	Display Unit	
GP70 Series	GP-H70 Series	GPH70-LG11-24V	GPH70L	AGP-3301L* <sup>1</sup>
		GPH70-LG41-24VP		
		GPH70-SC11-24V	GPH70S	
		GPH70-SC41-24VP		
	GP-270 Series	GP270-LG11-24V	GP270L	AGP-3301L
		GP270-LG21-24VP		
		GP270-LG31-24V		
		GP270-SC11-24V	GP270S	
		GP270-SC21-24VP		
		GP270-SC31-24V		
	GP-370 Series	GP370-LG11-24V	GP370L	AGP-3301L
		GP370-LG21-24VP		
		GP370-LG31-24V		
		GP370-LG41-24VP		
		GP370-SC11-24V	GP370S	
		GP370-SC21-24VP		
		GP370-SC31-24V		
		GP370-SC41-24VP		
	GP-470 Series	GP470-EG11	GP470	AGP-3500T* <sup>2</sup>
		GP470-EG21-24VP		
		GP470-EG31-24V		
	GP-570 Series	GP570-SC11	GP570	AGP-3500T
		GP570-SC21-24VP		
		GP570-SC31-24V		
		GP570-TC11		
		GP570-TC21-24VP		
		GP570-TC31-24V		
		GP57J-SC11		
GP570-TV11		GP570VM	AGP-3500T* <sup>3</sup>	
GP-571 Series	GP571-TC11	GP571T	AGP-3500T	
GP-675 Series	GP675-SC11	GP675	AGP-3600T	
	GP675-TC11			
	GP675-TC41-24VP			
GP-870 Series	GP870-PV11	GP870VM	AGP-3500T* <sup>3</sup>	
GP-377 Series	GP377-LG11-24V	GP377L	AGP-3300L	
	GP377-LG41-24V	GP377S	AGP-3300S	
	GP377-SC11-24V			
	GP377-SC41-24V			
GP77R Series	GP-377R Series	GP377R-TC11-24V		GP377R
		GP377R-TC41-24V		
	GP-477R Series	GP477R-EG11	GP477R	
		GP477R-EG41-24VP		
	GP-577R Series	GP577R-SC11	GP577R	
		GP577R-SC41-24VP		
		GP577R-TC11		
GP577R-TC41-24VP				

\*1 Project files (\*.prw) for the Handy type GPs are converted to project files (\*.prx) for normal GPs. As a result, Operation Switch and Function Switch settings are not converted.

\*2 Converting changes the display type to a 640x480 (VGA) resolution.

\*3 The video window display feature (V-tag) is not converted.

### ■ GP2000 Series

Convert From			Convert To		
Series Name		Type	GP Type	Display Unit	
GP2000 Series	GP2000H Series	GP-2301H Series	GP2301H-LG41-24V	GP2301HL	AGP-3301L <sup>*1*2</sup>
			GP2301H-SC41-24V	GP2301HS	AGP-3301S <sup>*1*2</sup>
		GP-2401H Series	GP2401H-TC41-24V	GP2401H	AGP-3400S <sup>*1*2</sup>
	GP-2300 Series	GP-2300 Series	GP2300-LG41-24V	GP2300L	AGP-3300L
			GP2300-TC41-24V	GP2300	AGP-3300T
		GP-2301 Series	GP2301-LG41-24V	GP2301L	AGP-3301L
			GP2301-SC41-24V	GP2301S	AGP-3301S
			GP2301-TC41-24V	GP2301	AGP-3301S
		GP-2400 Series	GP2400-TC41-24V	GP2400	AGP-3400T
		GP-2401 Series	GP2401-TC41-24V	GP2401	AGP-3400S
		GP-2500 Series	GP2500-TC11	GP2500	AGP-3500T <sup>*3</sup>
			GP2500-TC41-24V		
		GP-2501 Series	GP2501-SC11	GP2501S	AGP-3500S
	GP2501-TC11		GP2501	AGP-3500T	
	GP-2600 Series	GP2600-TC11	GP2600	AGP-3600T <sup>*3</sup>	
		GP2600-TC41-24V			
	GP-2601 Series	GP2601-TC11	GP2601	AGP-3600T	

\*1 Project files (\*.prw) for handy type GPs are changed to the project files (\*.prx) for a normal type GP. Therefore, Operation Switch and Function Switch settings are not converted.

\*2 The GP2000H series vibration function cannot be changed.

\*3 The video window display feature (V-tag) is not converted.

### ■ GLC Series

Convert From		Convert To	
Series Name	Type	Display Unit	
GLC Series	GLC100S Series	GLC100-SC41-24V	AGP-3300S-FN1M
	GLC100L Series	GLC100-LG41-24V	AGP-3300L-FN1M
	GLC300 Series	GLC300-TC41-24V	AGP-3500T-FN1M
	GLC2300L Series	GLC2300-LG41-24V	AGP-3300L-FN1M
	GLC2300 Series	GLC2300-TC41-24V	AGP-3300T-FN1M
	GLC2400 Series	GLC2400-TC41-24V	AGP-3400T-FN1M
	GLC2500 Series	GLC2500-TC41-24V	AGP-3500T-FN1M
		GLC2500-TC41-200V	
	GLC2600 Series	GLC2600-TC41-24V	AGP-3600T-FN1M
		GLC2600-TC41-200V	

### ■ LT Series

Convert From		Convert To	
Series Name	Type	Display Unit	
LT Series	LT TypeA	GLC150-BG41-XY32SK-24V GLC150-BG41-XY32SC-24V	LT-3301L
	LT TypeB/B+	GLC150-BG41-FLEX-24V GLC150-BG41-XY32KF-24V	
	LT TypeC	GLC150-BG41-RSFL-24V	
	LT TypeH	GLC150-BG41-ADK-24V GLC150-BG41-ADTK-24V GLC150-BG41-ADPK-24V GLC150-BG41-ADC-24V GLC150-BG41-ADTC-24V GLC150-BG41-ADPC-24V	
	LTC TypeA	GLC150-SC41-XY32SK-24V	LT-3301S
	LTC TypeB+	GLC150-SC41-XY32KF-24V	
	LTC TypeH	GLC150-SC41-ADK-24V GLC150-SC41-ADTK-24V GLC150-SC41-ADPK-24V	

**NOTE**

- You cannot convert FlexNetwork I/O settings. (For the LT TypeB+ display unit's S-NO.1, you can convert 16 points of inputs and outputs.)
- To convert a project (\*.lte) from the LT editor, in GP-PRO/PBIII save it as a \*.prw file to enable conversion.

### ■ ST400 Series

Convert From		Convert To	
Series Name	Type	Display Unit	
ST400 Series	ST400	ST400-AG41-24V	AGP-3200A
	ST401	ST401-AG41-24V	
	ST402	ST402-AG41-24V	
	ST403	ST403-AG41-24V	

**NOTE**

- In the ST400 SERIES, the function key settings, Logic Data and Video Screen cannot be converted.
- The backlight 2-color change function on the ST403 can be converted to AGP-3200A

### 2.1.3 Devices before and after Conversion

The [Device/PLC] name on the project file (\*.prw) created in GP-PRO/PBIII for Windows is changed after conversion. Be aware that some devices/PLCs cannot be converted.

**NOTE**

- After conversion, the name of the GP Type is also changed.
- ☞ "2.1.2 Model Names Before and After Conversion" (page 2-2)
- For project files created by GP-PRO, GP-PROII, GP-PROIII, GP-PRO/PBIII (DOS), and Parts Box, convert the screen data into \*.prw in GP-PRO/PBIII for Windows and then execute the GP-Pro EX's project converter.
- ☞ GP-PRO/PBIII for Windows Operation Manual "Chapter 12 Using Conventional Data"

Displays up to GP-PRO/PBIII for Windows Ver.7.0		GP-Pro EX Display	
Maker	Device/PLC Name	Maker	Device/PLC Name
Digital Electronics Corporation of Japan	Memory Link SIO Type	Digital Electronics Corporation of Japan	Memory Link
	Memory Link Ethernet Type		
Mitsubishi Electric Corporation	Mitsubishi Electric MELSEC-AnN (LINK)	Mitsubishi Electric Corporation	A series calculator link
	MITSUBISHI MELSEC-AnN (CPU)		A series CPU direct
	MITSUBISHI MELSEC-AnA (LINK)		A series calculator link
	MITSUBISHI MELSEC-AnA (CPU)		A series CPU direct
	MITSUBISHI MELSEC-A (JPCN1)		Not converted
	MITSUBISHI MELSEC-A (ETHER)		A series Ethernet
	MITSUBISHI MELSEC-F2 SERIES		Not converted
	MITSUBISHI MELSEC-FX (CPU)		FX series CPU direct
	MITSUBISHI MELSEC-FX 2 (LINK)		FX series calculator link
	MITSUBISHI MELSEC-FX (CPU2)		FX series CPU direct
	MITSUBISHI MELSEC-FX 1:N Comm.		FX series calculator link
	Mitsubishi Electric MELSEC-QnA (LINK)		Q/QnA serial communication
	Mitsubishi Electric MELSEC-QnA (CPU)		QnA series CPU direct
	Mitsubishi Electric MELSEC-Q (CPU)		Q series CPU direct
	Mitsubishi Electric MELSEC-QUTE (CPU)		QUTE Series CPU Direct
	Mitsubishi Electric MELSEC-Q (ETHER)		Q/QnA series Ethernet
	MITSUBISHI MELSECNET/10		Not converted
	MITSUBISHI FREQROL Series		
	MITSUBISHI CC-Link Type		
MITSUBISHI CC-Link Intelligent Device			

Continued

Displays up to GP-PRO/PBIII for Windows Ver.7.0		GP-Pro EX Display	
Maker	Device/PLC Name	Maker	Device/PLC Name
Omron Corporation	OMRON SYSMAC-C SERIES	Omron Corporation	C/CV series upper link
	OMRON SYSMAC-C 1:n Comm.		
	OMRON SYSMAC-CV SERIES		
	OMRON SYSMAC-CS1 SERIES		CS/CJ series upper link
	OMRON SYSMAC-CS1 (ETHER)		CS/CJ series Ethernet
	OMRON THERMAC NEO Series		Controller CompoWay/F
Sharp Corporation	SHARP New Satellite JW SERIES	Sharp MS Corporation	JW Series Computer Link SIO
Yokogawa Electric Corporation	YOKOGAWA FACTORY ACE 1:1 Comm.	Yokogawa Electric Corporation	PC link SIO
	YOKOGAWA FACTORY ACE 1:n Comm.		
	Yokogawa Electric Corporation FA-M3 (ETHER)		PC link Ethernet
	Yokogawa Electric Corporation FCN/FCJ Modbus RTU 1:n		Not converted
Fuji Electric Corporation	FUJI MICREX-F SERIES	Fuji Electric FA Components & Systems Co., Ltd.	MICREX-F series SIO
	Fuji Electric FA Components & Systems Co., Ltd. MICREX-F Series (T Link)		Not converted
	Fuji Electric FA Components & Systems Co., Ltd. MICREX-F Series (FLT)		
	Fuji Electric FA Components & Systems Co., Ltd. FLEX-PC (LINK)		
	Fuji Electric FA Components & Systems Co., Ltd. FLEX-PC (CPU)		
	FUJI MICREX-SX SERIES		MICREX-SX Series SIO
	FUJI Inverter		
	TEMPERATURE PXR		Not converted
Toyoda Machine Works, Ltd.	TOYODA TOYOPUC-PC2 SERIES	JTEKT Corporation	TOYOPUC CMP-LINK SIO
	TOYODA TOYOPUC-PC2 1:n Comm.		
	TOYODA TOYOPUC-PC3J SERIES		
	TOYODA TOYOPUC-PC3J 1:n Comm.		
Yaskawa Electric Corporation	YASKAWA Memocon-SC SERIES	Yaskawa Electric Corporation	MEMOBUS SIO
	YASKAWA GL120/130 SERIES		
	YASKAWA PROGIC8 SERIES		Not converted
	YASKAWA MP2000/MP900/CP9200SH		MEMOBUS SIO
	YASKAWA MP2000/MP920 (ETHER)		MEMOBUS Ethernet
	YASKAWA Inverter		
	YASKAWA MP Panel SERIES		Not converted

Continued

Displays up to GP-PRO/PBIII for Windows Ver.7.0		GP-Pro EX Display	
Maker	Device/PLC Name	Maker	Device/PLC Name
Hitachi Ltd.	HITACHI HIDIC-S10 a SERIES	Hitachi Ltd.	Not converted
	HITACHI HIDIC-S10E0 (JPCN/1)		
	HITACHI HIZAC-EC SERIES		
	HITACHI S10V Series (ETHER)		S10V Series Ethernet
Hitachi Industrial Equipment Systems Co., Ltd.	HITACHI IES HIDIC-H SERIES	Hitachi Industrial Equipment Systems Co., Ltd.	H Series SIO
	HITACHI IES HIDIC-H2 SERIES		H Series Ethernet
	Hitachi Industrial Equipment Systems Co.,Ltd. HIDIC H (ETHER)		
	HITACHI IES SJ300/L300P SERIES		
Toshiba Corporation	TOSHIBA PROSEC-EX2000 SERIES	Toshiba Corporation	Computer Link SIO
	TOSHIBA PROSEC-T SERIES		Not converted
	TOSHIBA PROSEC-T (ETHER)		
Matsushita Electric Works, Ltd.	MATSUSHITA Electric Works MEWNET-FP SERIES	Matsushita Electric Works, Ltd.	FP series PC link SIO
Koyo Electronics Industries Co., Ltd.	KOYO ELECTRONICS KOSTAC-SG8 SERIES		Not converted
	KOYO ELECTRONICS KOSTAC-SR21/22 SERIES		
	KOYO ELECTRONICS DL205/405 SERIES		
	KOYO ELECTRONICS DL305 SERIES		
Toshiba Machine Co., Ltd.	TOSHIBA MACHINE TC200 SERIES	Toshiba Machine Co., Ltd.	PROVISOR TC200
	TOSHIBA MACHINE TC200-S SERIES		
GE Fanuc Automation	GE Fanuc SERIES 90 SNP-X	GE Fanuc Automation	Series 90-30/70 SNP-X
	GE Fanuc SERIES 90-30/70 SNP		Series 90-30/70 SNP
	GE Fanuc SERIES S90-30/70 (ETHER)		Series90 Ethernet
FANUC Ltd.	FANUC Power Mate SERIES	FANUC Ltd.	Power mate
IDEC IZUMI Corporation	IDEC IZUMI IDEC_1		Not converted
	IDEC IZUMI IDEC_2		
	IDEC IZUMI IDEC_3		
	IDEC IZUMI MICRO3		
	IDEC IZUMI FC3/FC4A Series		

Continued



Displays up to GP-PRO/PBIII for Windows Ver.7.0		GP-Pro EX Display	
Maker	Device/PLC Name	Maker	Device/PLC Name
Siemens AG	SIEMENS S5 90-115 SERIES	Siemens AG	SIMATIC S5CPU Direct
	SIEMENS S5 135-155 SERIES		Not converted
	SIEMENS S5 3964 (R) protocol		
	SIEMENS S7 200 PPI		SIMATIC S7 MPI Direct
	SIEMENS S7 200 via MPI		
	SIEMENS S7 300/400 via MPI		SIMATIC S7 3964(R)/RK512
	SIMATIC S7 via 3964/RK512		
	SIEMENS S7 via 300/400 Ethernet		SIMATIC S7 Ethernet
	SIMATIC 545/555 CPU		Not converted
Rockwell (Allen-Bradley)	Allen Bradley PLC-5	Rockwell Automation, Inc.	DF1
	Allen Bradley SLC5/03, SLC5/04		Not converted
	Allen Bradley Control Logix DF1		
	AB PLC-5 DataHighway+		DH-485
	AB SLC500 DH485		Not converted
	AB Remote I/O		
	Allen Bradley SLC505 Ethernet		EtherNet/IP
	Allen Bradley Control Logix Ethernet		
Keyence	KEYENCE KZ-300 SERIES	Keyence	Not converted
	KEYENCE KZ-A500 SERIES (CPU)		
	KEYENCE KZ-A500 SERIES		
	KEYENCE KV-10/16/24/40 SERIES		
	KEYENCE KV-10_80RW SERIES		
	KEYENCE KV-700 SERIES (CPU)		KV-700/1000 Series CPU Direct
Shinko Electric Co. Ltd.	SHINKO ELECTRIC SELMART SERIES		Not converted
Matsushita Electric Industrial Co., Ltd.	Matsushita Electric Industrial Panadac-7000 Series		Not converted
	Matsushita Electric Industrial MINAS-A/S Series		
Modicon Corp.	Modicon Modbus Master	Schneider Electric Industries	MODBUS SIO master
	Modicon Modbus (Slave)		MODBUS Slave
	Modicon Modbus (Plus)		MODBUS PLUS
FATEK	FATEK FACON FB		Not converted
Orimvexta Co., Ltd	E1 SERIES		Not converted
PROFIBUS	PROFIBUS-DP	PROFIBUS International	PROFIBUS DP Slave
Device Net	Device Net Slave I/O	ODVA	Device Net Slave
INTERBUS	INTERBUS-SLAVE		Not converted
JPCN-1	JPCN/1 (Standard)		Not converted
Yamatake Corporation	Yamatake Temperature Controller SDC Series	Yamatake Corporation	Digital controller SIO

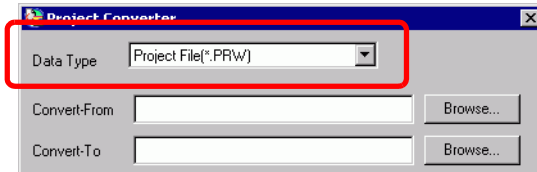
Continued

Displays up to GP-PRO/PBIII for Windows Ver.7.0		GP-Pro EX Display	
Maker	Device/PLC Name	Maker	Device/PLC Name
RKC Instrument Inc.	RKC INSTRUMENT CB/SR-Mini SERIES (MODBUS)	RKC Instrument Inc.	Controller MODBUS SIO
	RKC INSTRUMENT CB/REX-F/LE100 SERIES (RKC)		Controller RKC SIO
Shinko Technos Co., Ltd.	Shinko Technos Controller	Shinko Technos Co., Ltd.	Controller SIO
TOHO Electronics Co., Ltd.	Controller TTM Series		Not converted
FENWAL CONTROLS OF JAPAN, LTD.	Fenwal AL Series		Not converted
JT Engineering Inc.	JTE Analyzer		Not converted
Meidensha Corporation	Meidensha Corporation (ETHERNET)	Meidensha Corporation	UNISEQUE SERIES Ethernet
Shimaden Co., Ltd.	SHIMADEN Control Device		Not converted
CHINO Corporation	CHINO Controller (MODBUS)		Not converted
Schneider Electric	Schneider TSX via Uni-Telway	Schneider Electric Industries	Uni-Telway
	Schneider Modbus RTU 1:n		MODBUS SIO master
	Schneider Modbus Ethernet		MODBUS TCP master
Toshiba Schneider Inverter Corporation	Toshiba Schneider Inverter		Not converted
Ubon	UbonUPZ Series		Not converted
HIOKI E.E. Corporation	HIOKI E.E. Smart Site (MODBUS TCP)		Not converted

## 2.1.4 Using the Project Converter

1 From the task bar, click [Start], point to [Programs (P)] (on Windows®XP point to [All programs(P)]), [Pro-face], [GP-Pro EX \*.\*] (\*.Replace \*\* with the version number), and then click [Project Converter].

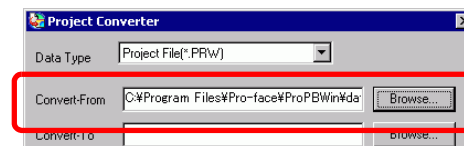
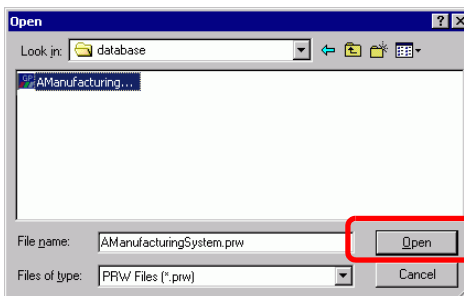
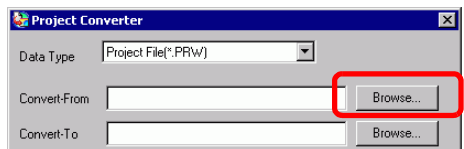
2 The Project Converter window opens and the [Project Converter] dialog box appears. Select [Project File(\*.PRW)] for [Convert-From] Type.




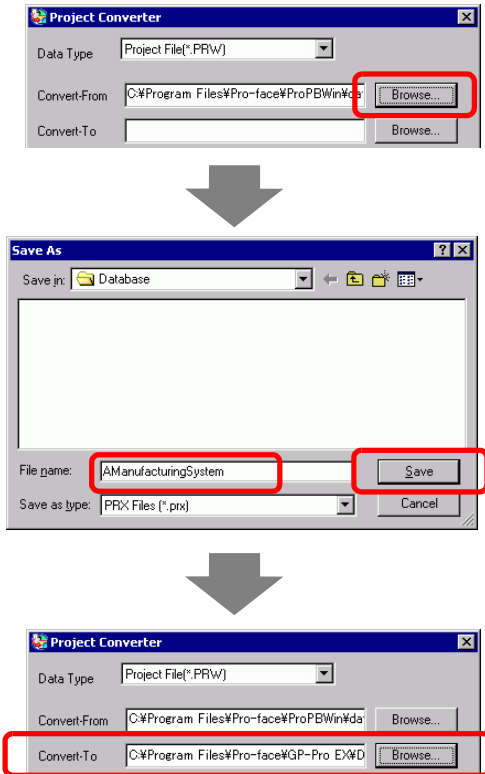
**NOTE**

- To convert the files in the [Pro-Control Editor], select [Logic File(\*.wll)]. To convert partial program files (\*.wlp) or subroutine program files (\*.wlf), you need to save the files in Project File format (\*.prw) with GP-PRO/PBIII then open them in the Project Converter.
- To convert a project (\*.lte) from the LT editor, in GP-PRO/PBIII save it as a \*.prw file to enable conversion.

3 Designate a GP-PRO/PBIII for Windows project file (\*.prw) in [Convert-From]. Click the [Browse] button to select any project file (For example "A Manufacturing System.prw"), and click [Open(O)]. A file is set to [Convert-From].

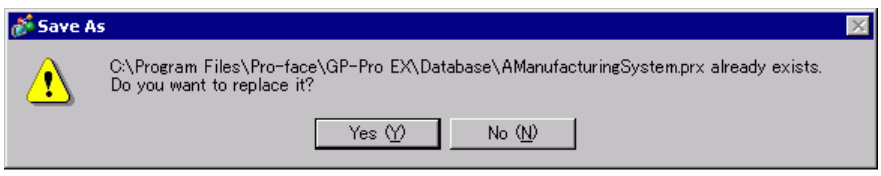


4 In [Convert-To], designate a GP-Pro EX project file (\*.prx). Click the [Browse] button, input a new [File name] (For example "A Manufacturing System.prx"), and click . A new project file name is set to [Convert-To].

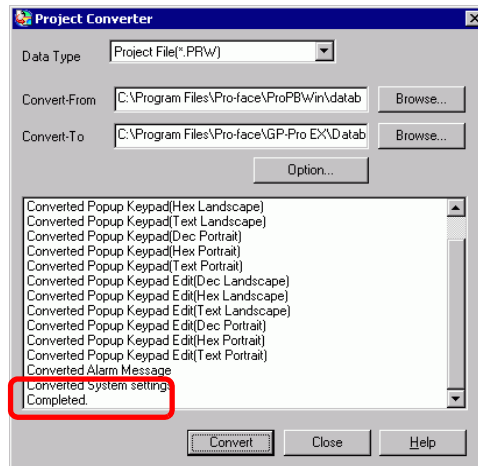
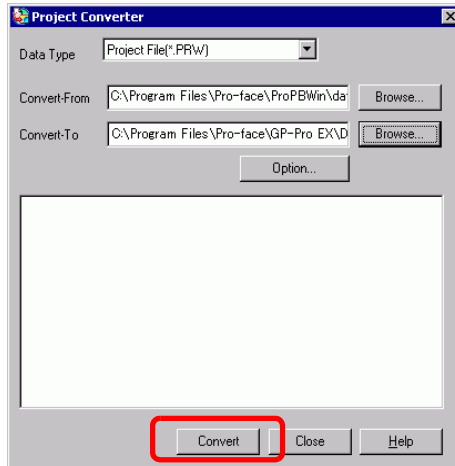


**NOTE**


- If a [Convert-To] file already exists, you are prompted to keep or overwrite this file.

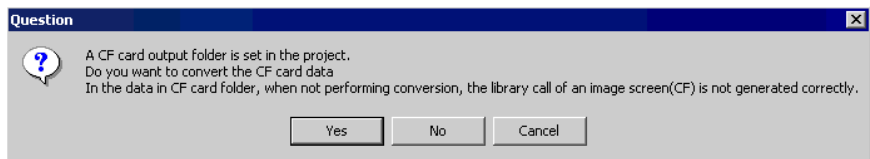





- 5 Convert Click the icon to start the conversion.

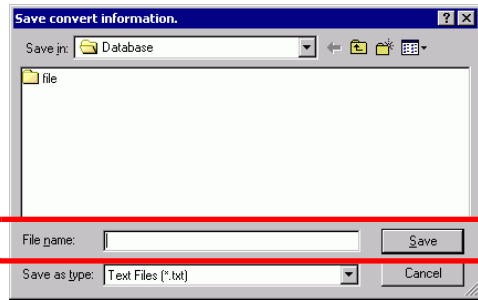


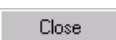
**NOTE**

- When the following dialog box appears, set the CF Card folder.  
 ■ "Converting the Destination in the GP-PRO/PBIII for Windows "CF Card Data Output Folder"" (page 2-14)



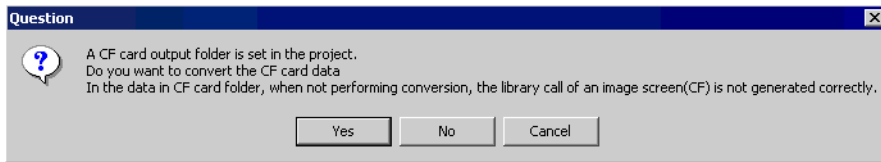
6 The [Save As] dialog box appears. If you click , you can save the conversion information in a text file. To save the file, enter a [File name(N)] and click . If you click , you return to the [Project Converter] dialog box without saving the conversion information.



7 Click  to close the [Project Converter] dialog box.

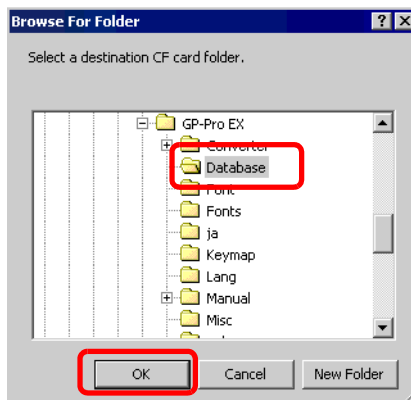
### ■ Converting the Destination in the GP-PRO/PBIII for Windows "CF Card Data Output Folder"

When converting a project file (\*.prw) that designates the CF Card Data Destination Folder in Procedure 5 described above, you are prompted to designate the CF Card Data Destination Folder in Convert Destination as well.



To convert the folder, click [Yes]. In the [Browse for Folder] dialog box, select the appropriate folder and click [OK].

You can also click [New Folder] to create a new folder in a directory.



**IMPORTANT**

- You always need to select [Yes] to convert the CF Card Data Destination Folder in the [Question] dialog box. If you select [No], called images may not be properly displayed.

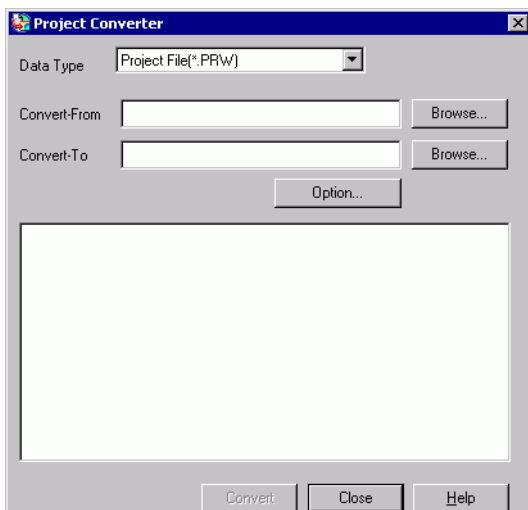
## 2.1.5 Setting up the Project Converter

The following describes how to convert files created in GP-PRO/PBIII for Windows, Pro-Control, and LogiTouch into GP-Pro EX project files.

**IMPORTANT**

- GP-Pro EX data cannot be converted into GP-PRO/PBIII for Windows, Pro-Control, or LogiTouch files.

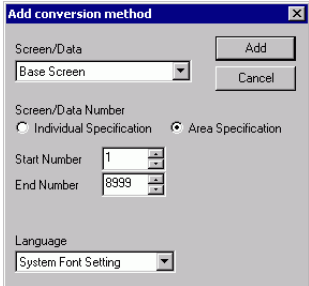
### ■ Project Converter



Setting	Description
Data Type	Select the type of file you want to convert from [Project File], [Parts File], [CF Card Data], or [Logic File].
Convert-From	Click the [Browse] button to select the file you want to convert. <ul style="list-style-type: none"> <li>• If [CF Card Data] is selected in the [Data Type] drop-down list, you need to set up the CF card destination folder.                             <p>☞ " ■ Converting the Destination in the GP-PRO/PBIII for Windows "CF Card Data Output Folder"" (page 2-14)</p> </li> </ul>
Convert-To	Click the [Browse] button to select the destination folder for the converted project file. <ul style="list-style-type: none"> <li>• If [CF Card Data] is selected in the [Data Type] drop-down list, you need to set up the CF card destination folder.                             <p>☞ " ■ Converting the Destination in the GP-PRO/PBIII for Windows "CF Card Data Output Folder"" (page 2-14)</p> </li> </ul>
Option	The [Options] dialog box appears. <p>☞ " ◆ Options" (page 2-16)</p>

◆ Options



Setting	Description
Text Conversion Settings	Set up the screens and data for conversion individually.
Language	Select the base language for conversion from [System Font], [ASCII], [Korean], [Chinese (Traditional)], [Chinese (Simplified)], [Japanese].
Font Type	Select [Standard Font] or [Stroke Font].
Add Conversion Method	<p>Click Add. The [Add conversion method] dialog box appears.</p>  <ul style="list-style-type: none"> <li>To delete the settings, select the item listed in [Add conversion method] and click [Delete].</li> </ul>
Screen/Data	Select a screen or data to convert from [Base], [Mark Screen], [Line Graph Screen], [Keypad Screen], [Text Screen], [Window], [Image Screen], [Sound], [Global D-Script], [Extension SIO Script], [D-Script Function], [Data Sampling], [Filing Data], [Log Settings], [CSV Data Transfer Feature], [Alarm Message/Summary], [Bit Log Alarm], [Word Log Alarm], [Logic Data].
Screen/Data Number	<ul style="list-style-type: none"> <li>Individual Specification Specify the number of the screen or data you want to convert.</li> <li>Area Specification Specify the [Start] and the [End Number] of the screen or data you want to convert from 1 to 8999.</li> </ul>
Language	Select from [System Font], [ASCII], [Korean], [Chinese (Traditional)], [Chinese (Simplified)], and [Japanese].
GLC Real Variable Setting	Select [Real Variable] or [Float Variable].



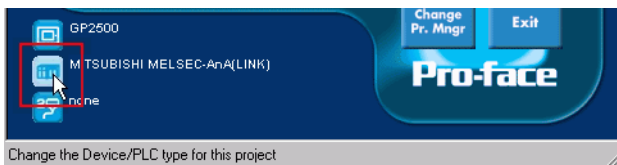
## 2.1.6 Error Messages

If you encounter any messages during project conversion, look them up here.

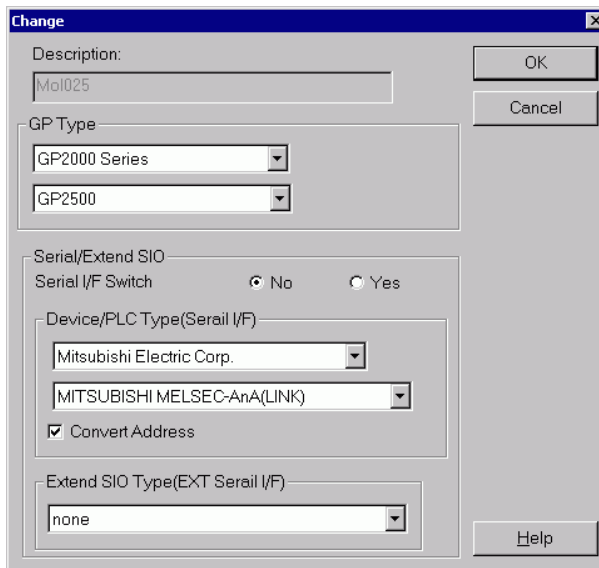
**The selected Device/PLC is unavailable for conversion. Change the Device/PLC before conversion.**

The selected Device/PLC is not supported by GP-Pro EX. Please select a Device/PLC that is supported by GP-Pro EX in GP-PRO/PBIII for Windows and run the Project Converter again. For the device/PLCs supported by GP-Pro EX, refer to "2.1.3 Devices before and after Conversion" (page 2-6).

- To change [Device/PLC Type] in GP-PRO/PBIII for Windows
  - (1) Select the [Device/PLC Type] icon in GP-PRO/PBIII for Windows' Project Manager.



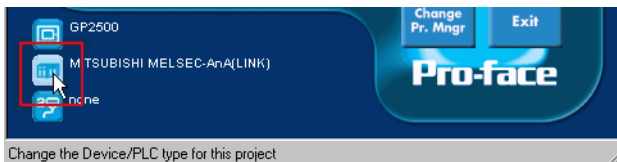
- (2) The [Change] dialog box appears. In the [Device/PLC Type (Serial F)], select the appropriate display unit. Select the [Convert Address] check box.



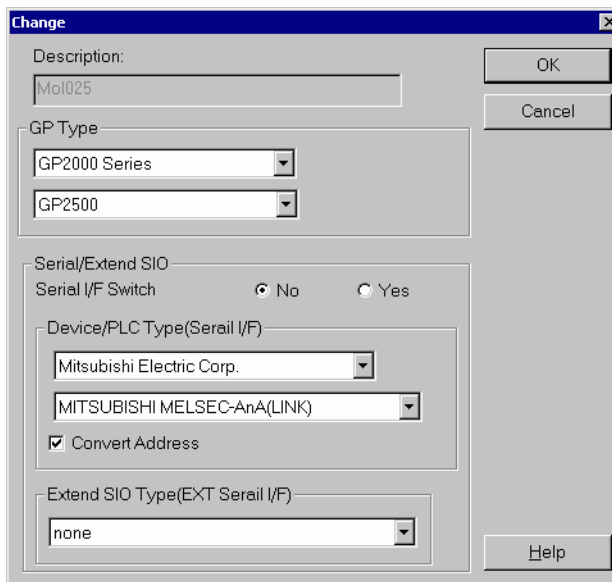
**Cannot read the source Device/PLC file.**

The source file's device/PLC type is unsupported. Open the project in GP-PRO/PBIII for Windows, select a Device/PLC that is supported by GP-Pro EX, and run the Project Converter again. For devices/PLCs supported by GP-Pro EX, see "2.1.3 Devices before and after Conversion" (page 2-6).

- To change [Device/PLC Type] in GP-PRO/PBIII for Windows
- (3) Select the [Device/PLC Type] icon in GP-PRO/PBIII for Windows' Project Manager.



- (4) The [Change] dialog box appears. In the [Device/PLC Type (Serial F)], select the appropriate display unit. Select the [Convert Address] check box.

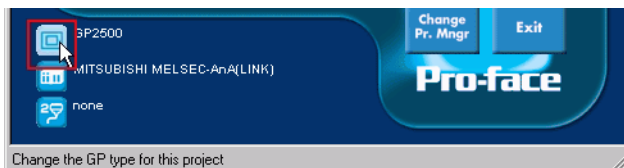


**The selected model is unavailable for conversion. Change the model.**

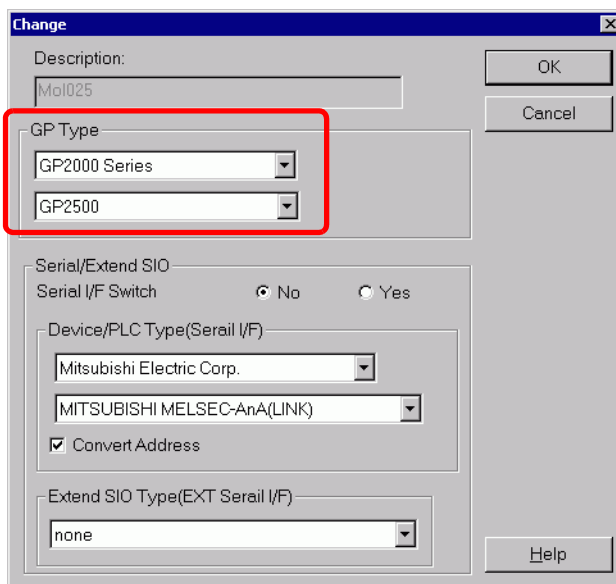
The selected Display Type is not supported by GP-Pro EX. Select a GP Type that is supported by GP-Pro EX in GP-PRO/PBIII for Windows and run the Project Converter again. For the models supported by GP-Pro EX, refer to "2.1.2 Model Names Before and After Conversion" (page 2-2)

- To change [GP Type] in GP-PRO/PBIII for Windows

(5) Select the [GP Type] icon in GP-PRO/PBIII for Windows' Project Manager.



(6) The [Change] dialog box appears from the [GP Type] drop-down list, select the appropriate GP unit. Be aware that the GP may have different features before and after conversion.



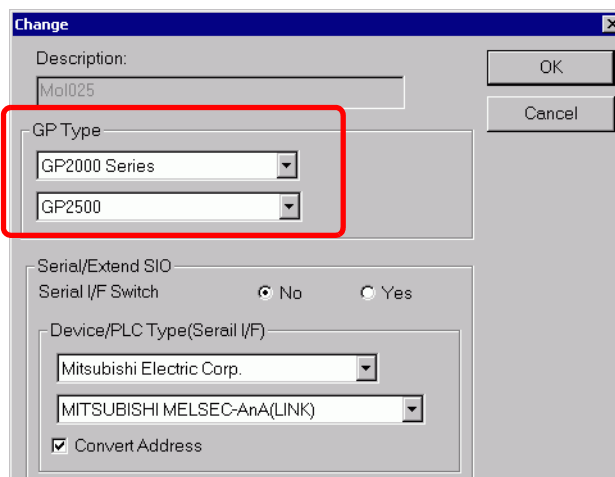
**Cannot read the model information file.**

The source GP model cannot be recognized. Select a GP Type that is supported by GP-Pro EX in GP-PRO/PBIII for Windows and run the Project Converter again. For the models supported by GP-Pro EX, refer to "2.1.2 Model Names Before and After Conversion" (page 2-2)

- To change [GP Type] in GP-PRO/PBIII for Windows
- (7) Select the [GP Type] icon in GP-PRO/PBIII for Windows' Project Manager.



- (8) The [Change] dialog box appears from the [GP Type] drop-down list, select the appropriate GP unit. Be aware that the GP may have different features before and after conversion.



**Cannot read AGPCnv.cfg file.**

Failed to load GP-Pro EX AGPCnv.cfg file. Install GP-Pro EX again.

**Cannot read the prw file.**

Failed to read a GP-PRO/PBIII for Windows file (\*.PRW). Microsoft Windows permissions may restrict access to the GP-PRO/PBIII for Windows file (\*.PRW). Check the permissions in Windows Explorer.

**Cannot access the parts file.**

Failed to read a GP-PRO/PBIII for Windows' Part file (\*.PDB or \*.BPD). Microsoft Windows permissions may restrict access to the GP-PRO/PBIII for Windows' Part file (\*.PDB or BPD). Check the permissions in Windows Explorer.

**Invalid extension.**

An incorrect extension is designated in Project Converter [Convert To]. Input a correct extension (\*.prx).

## 2.2 How to Update Software

This section explains how to update GP-Pro EX. Apart from software, there are also update programs for manuals and drivers.

**NOTE**

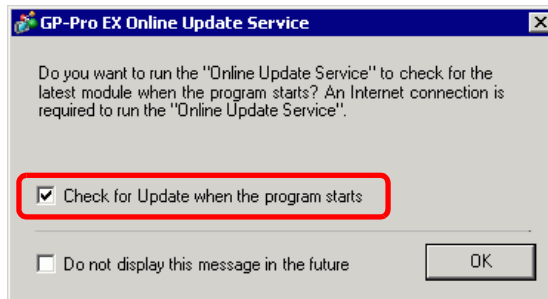
- To update GP-Pro EX, the Online Update Feature is used. An Internet connection is required.
- The steps below may change without notice.

### 2.2.1 Working with Online Update

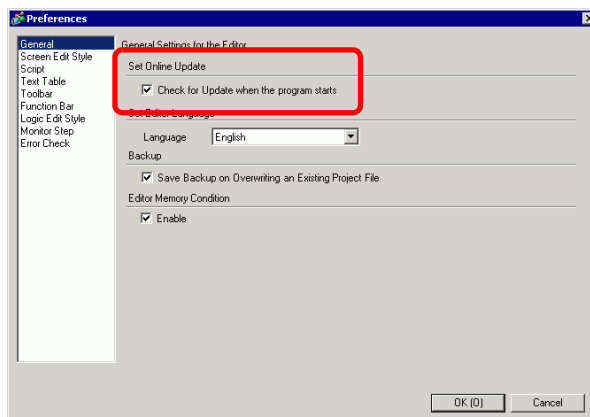
1 From the [Help (H)] menu, select [Confirm Update of GP-Pro EX (U)]

**NOTE**

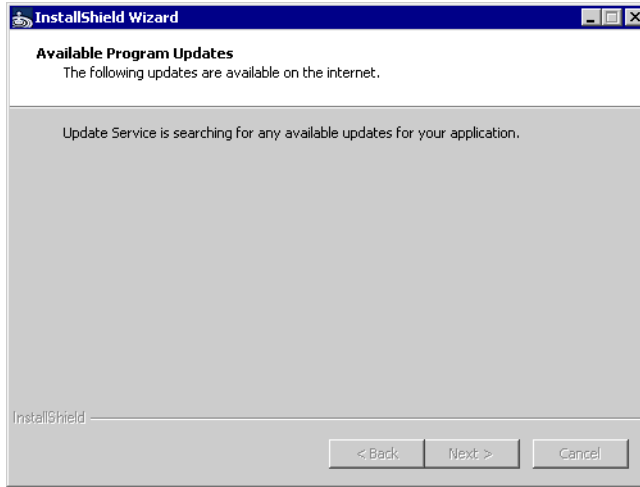
- When you launch GP-Pro EX, the following dialog box appears. To start the online update every time you launch GP-Pro EX, select the [Check for Update when the program starts] check box, then click [OK]. To receive updates as needed in manner of Procedure 1, clear the check box and click [OK].



Normally, for the automatic updates to start the online update every time you launch GP-Pro EX, you can set up the following: select [Preferences(O)]-[General] from the [View (V)] menu, and select the [Check for Update when the program starts] check box. Click [OK].

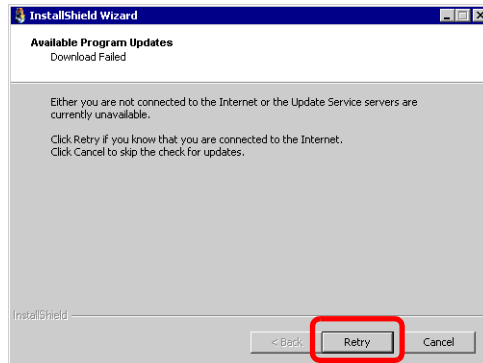


## 2 Search for programs on your computer that need updating over the Internet.

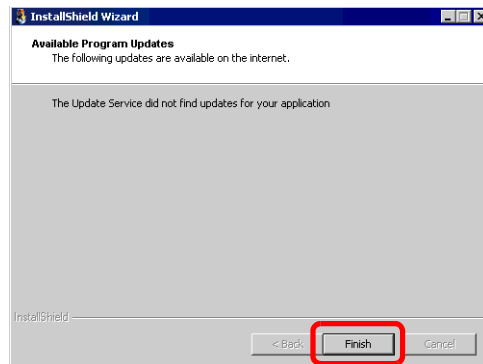


**NOTE**

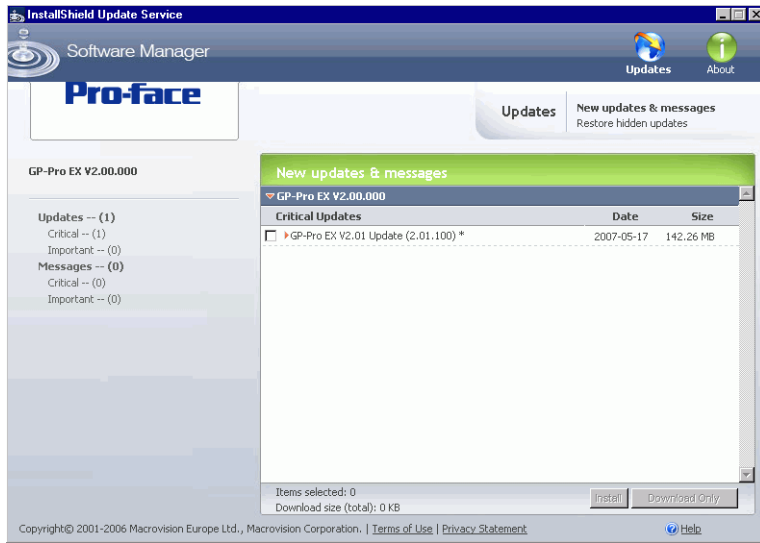
- If you do not have an Internet connection, the following error occurs. Once you are connected, click the [Retry] button. This is not displayed for Search when GP-Pro EX is launched.



- After searching, if there are no program updates, the following dialog box appears. Click the [Finish] button to finish. This is not displayed for Search when GP-Pro EX is launched.



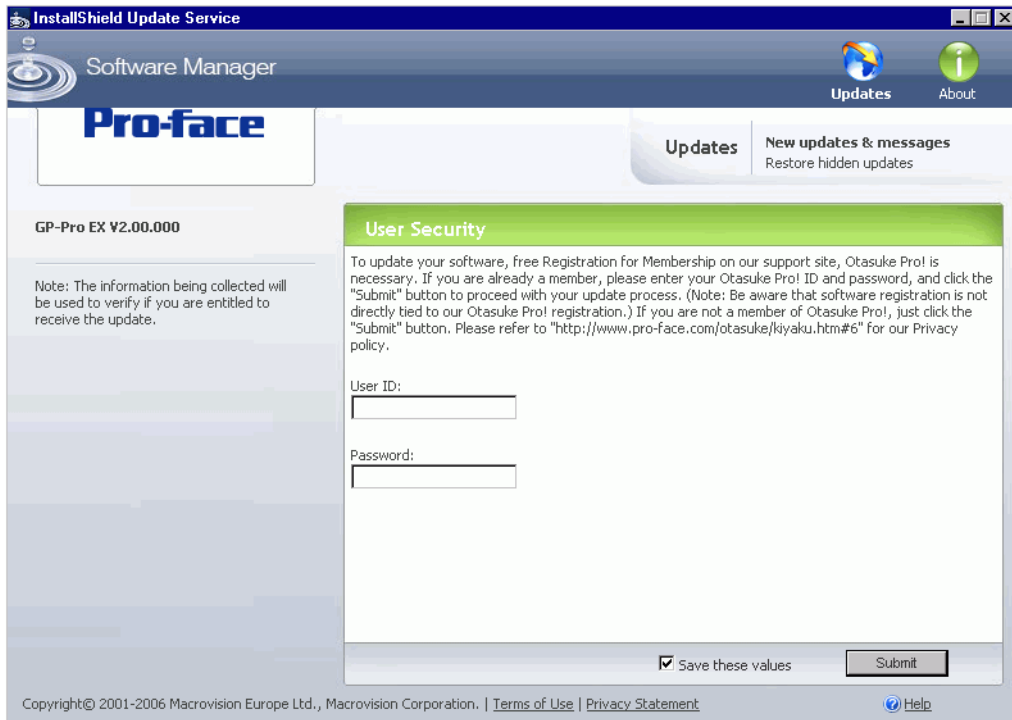
- 3 When the [Available Updates] window opens, confirm the program updates.  
Select the items you want updated with the [Add] button, and click the [Next] button.

**NOTE**

- The previous [Available Updates] screen update item is an example. You can confirm the latest program updates on your computer.

[New update and message] screen appears, where you can confirm the programs to update. You can either install all selected items automatically ([Install] button) or install each item individually ([Download only] button).

- 4 Click [Install] or [Download only] and in the [User Security] screen, enter your [User ID] and [Password] then click [Submit].





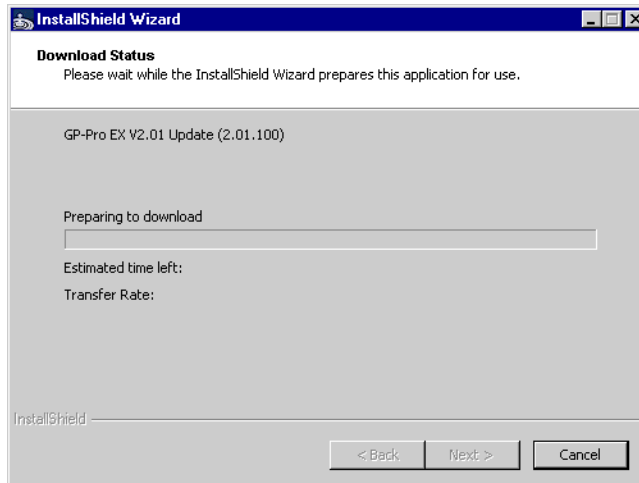
### 5 Start installation.

**NOTE**

- Please close all GP-Pro EX project files before installing the updates

- Click the [Install] button.

Installing all selected program updates starts automatically. After downloading program updates is complete, click [Next] to begin the installation. Follow the instructions in the wizard. To cancel the installation, click the [Cancel] button.



- When clicking the [Download only] button  
Downloads the selected program updates. Click the [Download] button, select a save location for the program updates, and click the [Save] button. Next, click the [Finish] button to complete the wizard. Click the saved program updates (\*.exe) to start the installation.

### 6 The installation of product updates for the software is now complete.

When the installation of the manual product updates completes, the message [The setup was completed] appears. Click [OK] to finish.

