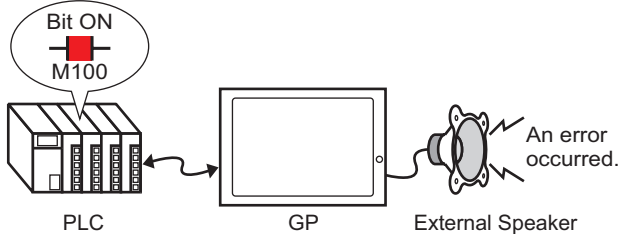
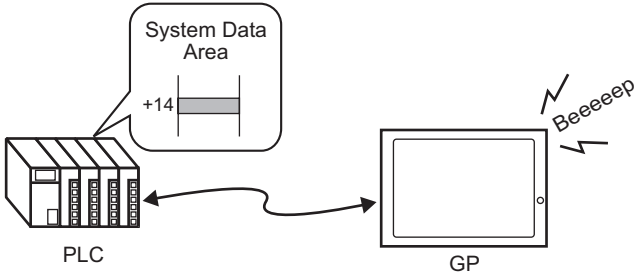
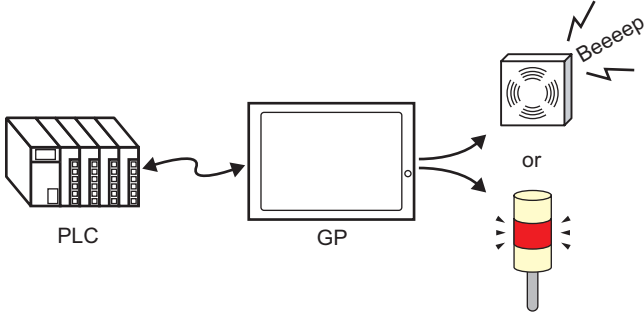


# 25 | Using Audio Notifications

This chapter explains how to set and operate audio notifications such as buzzers and similar sounds in GP-Pro EX. Please start by reading “25.1 Settings Menu” (page 25-2) and then turn to the corresponding page.

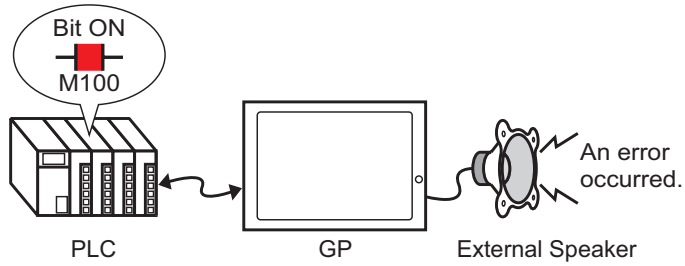
25.1	Settings Menu .....	25-2
25.2	Announcing Alarms with Sound .....	25-3
25.3	Sounding the GP Buzzer from a Device/PLC .....	25-7
25.4	Triggering a Buzzer Sound from the GP .....	25-10
25.5	Settings Guide.....	25-13
25.6	Restrictions .....	25-16

## 25.1 Settings Menu

Announcing Alarms with Sound	
 <p>Bit ON M100</p> <p>PLC GP External Speaker</p> <p>An error occurred.</p>	<ul style="list-style-type: none"> <li>☞ Setup Procedure (page 25-4)</li> <li>☞ Introduction (page 25-3)</li> </ul>
Sounding the GP Buzzer from a Device/PLC	
 <p>System Data Area +14</p> <p>PLC GP</p> <p>Beeeeep</p>	<ul style="list-style-type: none"> <li>☞ Setup Procedure (page 25-8)</li> <li>☞ Introduction (page 25-7)</li> </ul>
Triggering a Buzzer Sound from the GP	
 <p>PLC GP</p> <p>Beeeeep</p> <p>or</p>	<ul style="list-style-type: none"> <li>☞ Setup Procedure (page 25-11)</li> <li>☞ Introduction (page 25-10)</li> </ul>

## 25.2 Announcing Alarms with Sound

### 25.2.1 Introduction

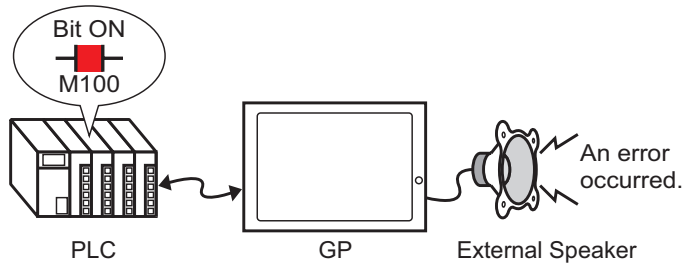



If you connect a GP sound output to an alarm, the GP can announce errors with sound. Sound output requires an external speaker (sold separately).

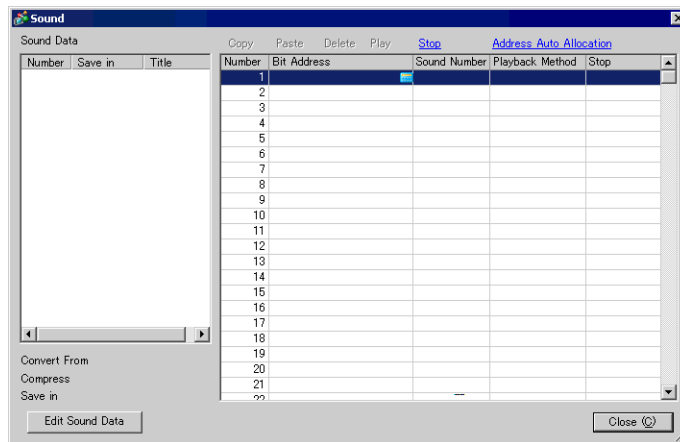
## 25.2.2 Setup Procedure

**NOTE**

- Please refer to the settings guide for details.  
 ☞ “25.5.1 Common (Sound) Settings Guide” (page 25-13)



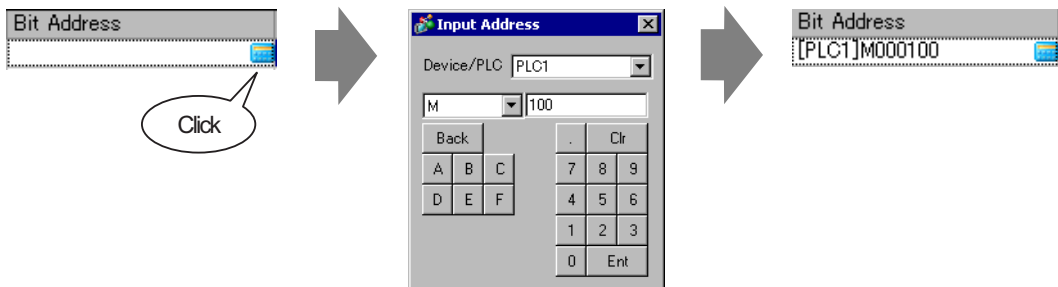
- 1 From the [Common Settings (R)] menu, select [Sound (H)], or click .
- 2 The [Sound Setting] dialog box appears.



- 3 Set the [Bit Address] to play the sound.


Click the icon to display an address input keypad.

Select device "M", input "100" as the address, and press the "Ent" key.



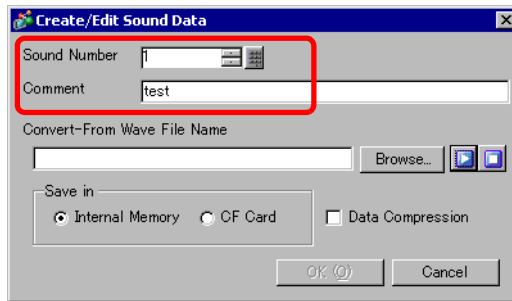
**NOTE**

- If you connect the bit address for sound output to the bit address for an alarm occurrence, you can provide an announcement of error occurrences with sound.

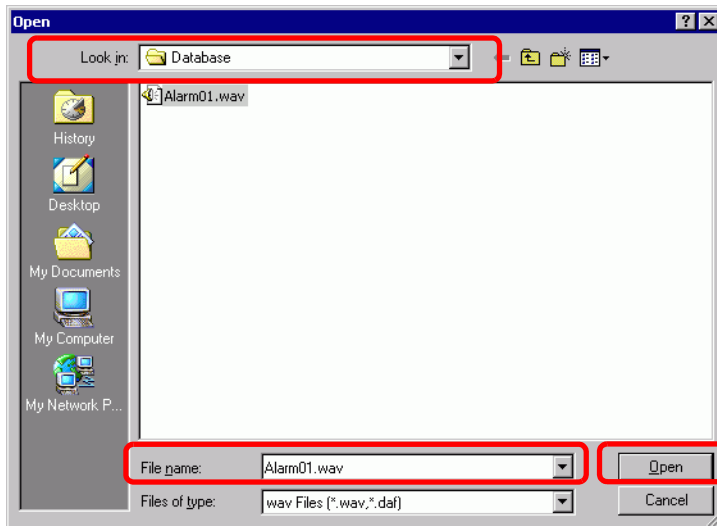
4 Next, specify the sound to play. Select the [Sound Number] cell, click , and select [Create Sound Data].



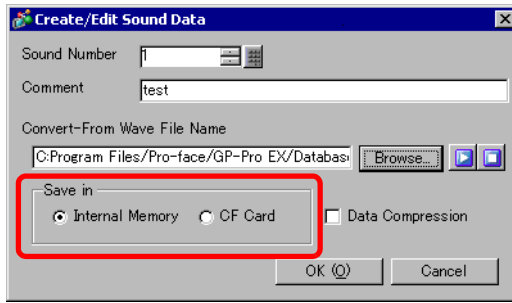
5 The [Create/Edit Sound Data] dialog box opens. Specify the [Sound Number] and [Comment]. (For example, [Sound Number] 1, [Comment] test).



6 Click the [Browse] button to open the [Open] dialog box. Select the location and file name of the file you want to convert and click [Open].



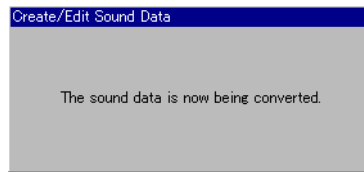
7 In the [Save In] group box, select the storage destination for the converted file when transferred to the GP.



**NOTE**

- If you select [Save In] - [CF Card] without specifying the CF Card Folder, a message to create the [CF Card Folder] appears. Click [Yes]. When the [Project Information] dialog box appears, select the [Enable CF Card] check box and specify the folder.

8 Click the [OK] button and the conversion will start.



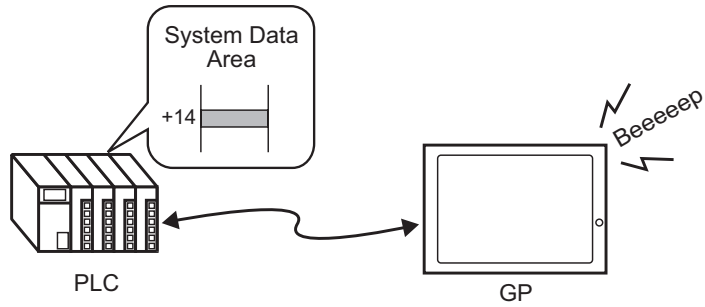
9 If needed, select [Playback Method] and [Stop] functions for the converted sound. (For example, [Playback Method] Repeat, [Stop] Enable)

No.	Bit Address	Sound No.	Playback Method	Stop
1	[PLC1]X00000	1 (Internal)	Repeat	Enable
2				
3				

10 The process is complete.

## 25.3 Sounding the GP Buzzer from a Device/PLC

### 25.3.1 Introduction

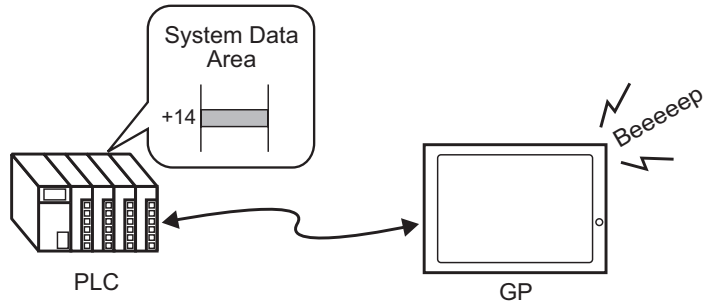


You can sound the GP internal buzzer from a device/PLC. You need to set the GP system data area in the PLC to sound the buzzer.

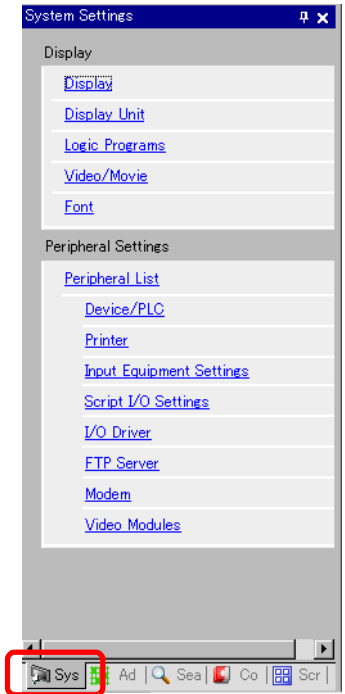
### 25.3.2 Setup Procedure

**NOTE**

- Please refer to the settings guide for details.
- ☞ “5.15.6 [System Settings] Setting Guide ◆ System Area Settings” (page 5-155)
- ☞ “A.1.4.2 System Data Area” (page A-11)



1 Select the System Settings tab to open the [System Settings].

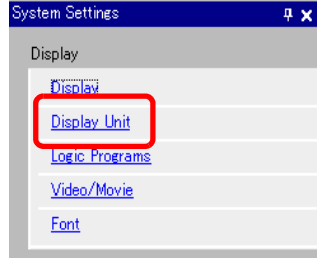


**NOTE**

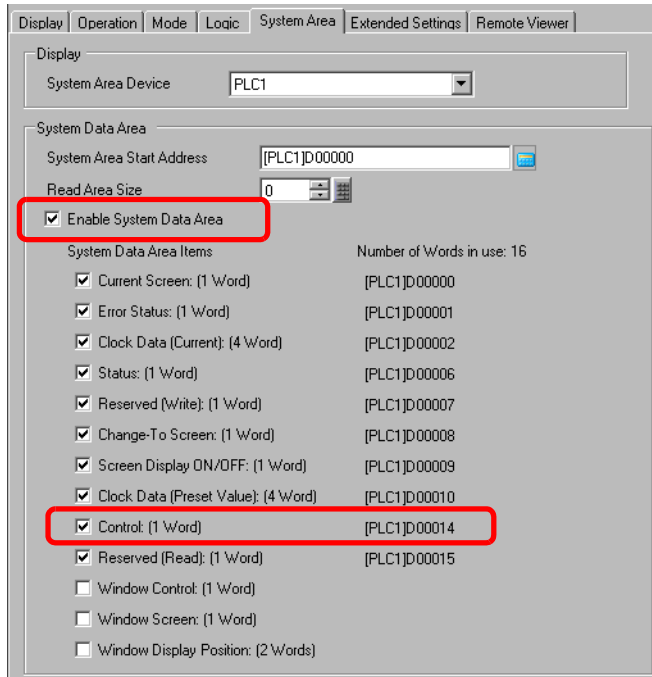
- If the [System Settings] tab is not displayed in the workspace, on the [View (V)] menu, point to [Workspace (W)], and then click [System Settings (S)].



2 From [Display], select [Display Unit].



3 In [System Data Area], select the [Enable System Data Area] and [Control: (1 Word)] check boxes. This address is used to sound the GP internal buzzer from the PLC.



4 If you turn ON Bit 1 in the [Control: (1 Word)] address specified in step 3 while Bit 4 is OFF, the GP display unit buzzer rings.

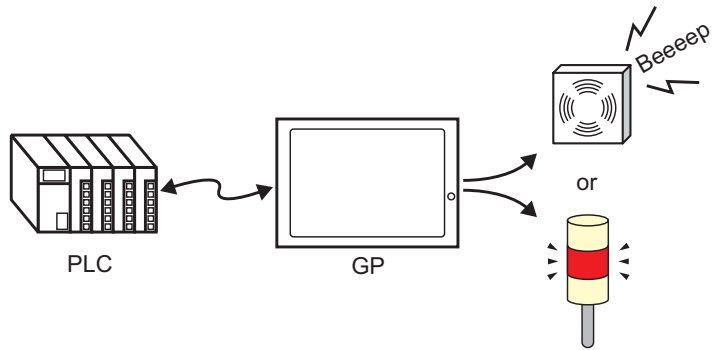
Bit Position	15	14	~	4	~	1	0
	0	0		0		1	0

**NOTE**

- If you turn ON Bit 1 while Bit 4 is ON, the buzzer will not ring.  
Control Word Address: Bit 4 controls output to buzzer (0) or does not output to buzzer (1).  
☞ “A.1.4.2 System Data Area” (page A-11)

## 25.4 Triggering a Buzzer Sound from the GP

### 25.4.1 Introduction

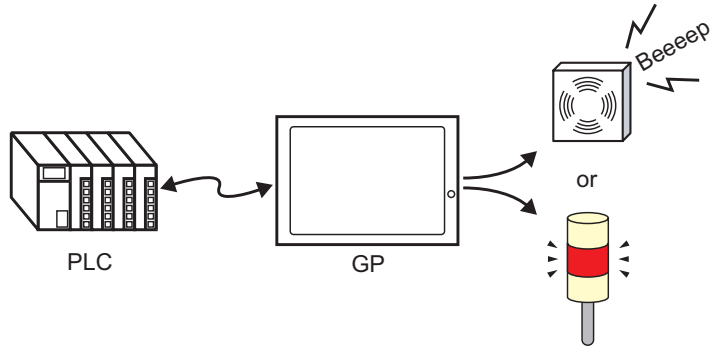


The GP AUX terminal connector can be used for external audio output devices.

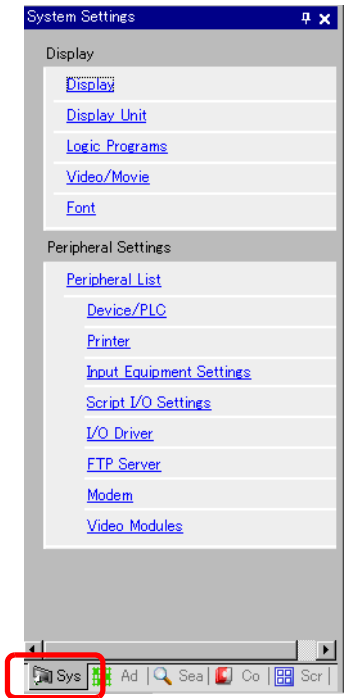
## 25.4.2 Setup Procedure

**NOTE**

- Please refer to the settings guide for details.
- ☞ “5.15.6 [System Settings] Setting Guide ◆ System Area Settings” (page 5-155)
- ☞ “A.1.4.2 System Data Area” (page A-11)



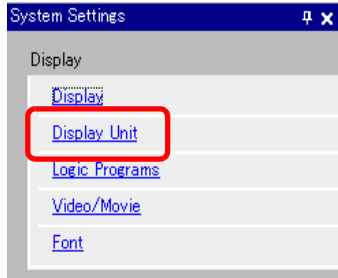
1 Select the System Settings tab to open the [System Settings].



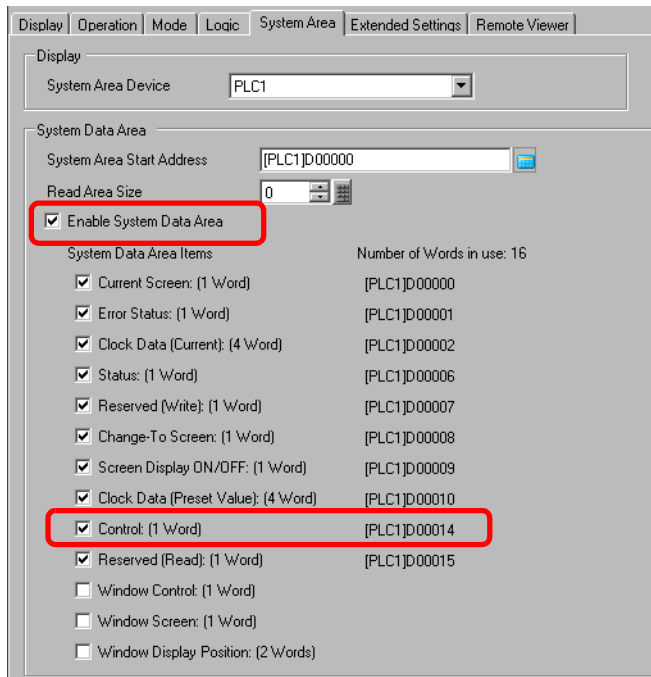
**NOTE**

- If the [System Settings] tab is not displayed in the workspace, on the [View (V)] menu, point to [Workspace (W)], and then click [System Settings (S)].

2 From [Display], select [Display Unit].



3 In [System Data Area], select the [Enable System Data Area] and [Control: (1 Word)] check boxes.



4 If you turn ON Bit 1 in the [Control: (1 Word)] address specified in step 3 while Bit 5 is OFF, the contact to sound an external buzzer turns ON. You can then connect and operate an external power supply and a buzzer or revolving light.

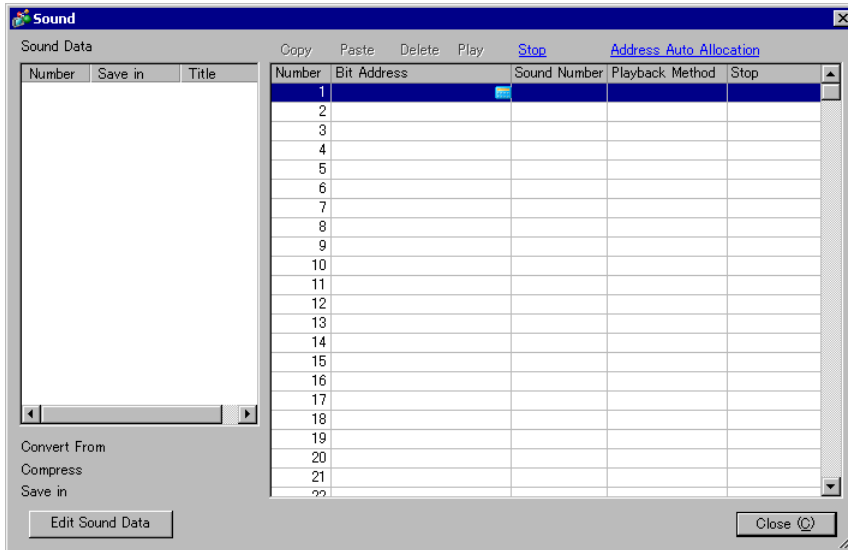
Bit Position	15	14	~	5	~	1	0
	0	0		0		1	0

**NOTE**

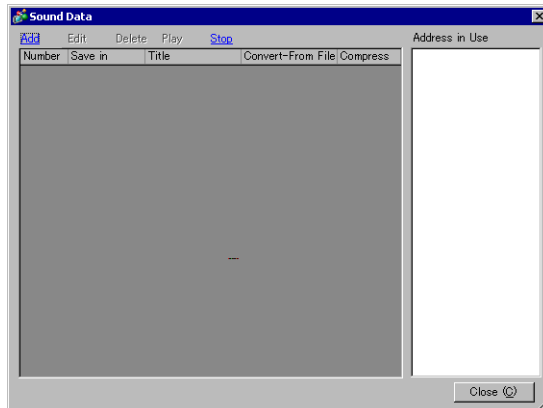
- If you turn ON Bit 1 while Bit 5 is ON, the contact to sound an external buzzer will not turn ON.  
Control Word Address: Bit 5 controls AUX output (0: Enabled, 1: Disabled)  
☞ “A.1.4.2 System Data Area” (page A-11)

## 25.5 Settings Guide

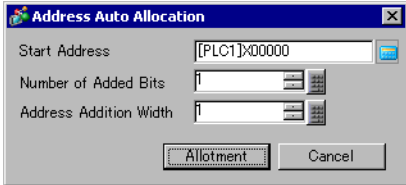
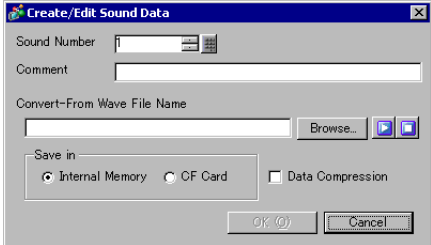
### 25.5.1 Common (Sound) Settings Guide





Setting	Description
Sound Data	Lists the registered sound data.
Number	Displays the registered [Sound Number].
Save in	Displays the location where the sound data is stored in either [Internal Memory] or [CF Card].
Title	Displays the comment for the registered sound data.
Convert From	Displays the file name of the sound data before conversion.
Compress	Indicates whether the data is compressed or not.
Save in	Displays the [Save in] location of the sound selected in the [Sound Data] list.
Edit Sound Data	The [Sound Data] dialog box appears. The data in the [Sound Data] dialog box can be edited, added, deleted, or played back. [Address in Use] lists bit addresses used to play the sound data.



Continued

Setting	Description
Copy	Copies the [Sound Data] information in the selected row.
Paste	Pastes the copied [Sound Data] information.
Delete	Deletes the [Sound Data] information in the selected row.
Play	Plays the selected [Sound Data] information. When this option is selected again during playback, the sound being played is stopped and played again. If the [Sound Data] dialog box is closed during playback, the sound is stopped.
Stop	Stops the sound being played.
Address Auto Allocation	<p>The [Address Auto Allocation] dialog box appears. Configure settings to allocate designated addresses from the starting address.</p> 
Start Address	Specify the address to start the auto allotment.
Number of Added Bits	Set the number of bits to add within the range from 1 to (Maximum number of sound settings - Current row position + 1).
Address Addition Width	Set the increment of the auto allotment from 0 to 4,096.
Model	Designate the registration Number of the sound data from 1 to 512.
Bit Address	Designate the bit address to play the sound.
Sound Number	<p>Click [Create Sound Data] and the following [Create/Edit Sound Data] dialog box appears.</p> 

Continued

Setting	Description	
Sound Number	Sound Number	Designate the sound data number from 1 to 8,999.
	Comment	Type the comment for the sound data to be registered within 30 characters.
	Convert-From Wave File Name	When the Wave file to be converted is specified, the path to reference the file is displayed here.
	...	The [Open] dialog box to allow designation of the Wave file to be converted appears.
		Plays the source file to be converted from Wave.
		Stops the sound being played.
	Save in	Specify where in the GP you want to save the converted sound data, either [Internal Memory] or [CF Card].
	Data Compression	Compresses data. You can save memory.
Playback Method	<p>There are three modes: [Repeat], [Play] and [Play (Bit OFF)].</p> <ul style="list-style-type: none"> <li>• [Repeat] Outputs sound while the bit address is ON. When multiple bit addresses are ON, repeats all sounds in the order in which the bit address turned ON. From the next playback, the sounds are output in the order in which they were set.</li> <li>• [Play] Plays only once when the bit address turns from OFF → ON.</li> <li>• [Play (Bit OFF)] Plays only once when the bit address turns from OFF → ON and automatically turns OFF the bit address.</li> </ul> <p><b>NOTE</b></p> <ul style="list-style-type: none"> <li>• This playback method is valid only when the LS area is used as a bit address.</li> </ul>	
Stop	Stops the sound file being played when the bit address turns from ON to OFF.	

---

## 25.6 Restrictions

---

- The maximum number of sounds for the sound settings is 512.
- You can set the sound number from 1 to 8,999.
- The total capacity to store the sound data in [Internal Memory] is approximately 1 MB even when the data is compressed. When you select [CF Card] in [Save in], the total capacity is equal to the CF Card's free space.
- Use the PCM 16 Bit 8 KHz Monaural data for Wave files of sound data. If you use more than 8 KHz, enable Windows Standard audio.
- If you register sound data by setting all [Bit Addresses] to a Word Address, set the Word Address within 128 Words.
- When multiple Bit Addresses turn ON at the same time, sound is played in the order of registration in [Sound (H)]. If another repeat playback starts during a [Repeat] playback, sound will be played in the order of registration in [Sound (H)] from the next repeat playback. The order, however, may change depending on the communication timing.
- When [Stop] is set, there is a short delay after the bit turns OFF before the output is stopped.
- During sound playback, retain the trigger bit's ON time or OFF time for [Communication Cycle Time]<sup>\*1</sup> or 150 ms, whichever is longer.
- A movie's audio output is overridden when the Sound settings start bit is turned ON during movie playback.

\*1 The Communication Cycle Time is the time from when the GP requests data from the external device to when the data arrives. This value is stored in internal device LS2037 as a binary value, in units of 10 milliseconds.