

4 | Workflow Procedure

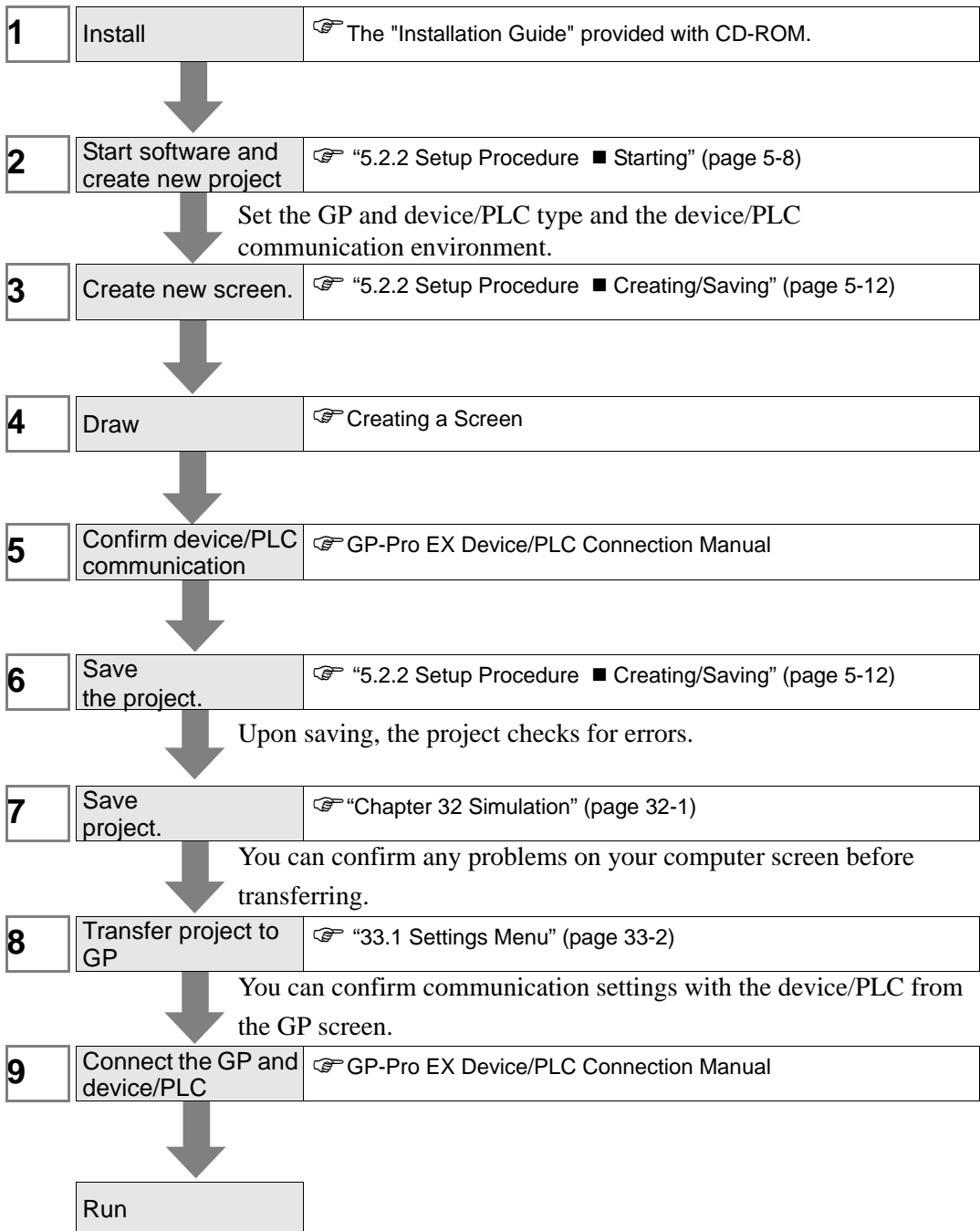
This chapter explains the procedures for development in GP-Pro EX.

4.1	Creating HMI Displays	4-2
4.2	Creating HMI Displays and Logic Programs	4-3

4.1 Creating HMI Displays

Below explains GP-Pro EX installation, startup, new screen creation, connecting with device/PLC, and work flow to the start of screen creation.

Click the reference to go to the corresponding page.



4.2 Creating HMI Displays and Logic Programs

The following figure explains GP-Pro EX installation, startup, new screen creation, connection with device/PLC, and the work flow up to the start of creating screens and logic programs.

Click the reference to go to the corresponding page.

