

2



Using GP-Pro EX

This chapter covers compatibility, project conversion, and how to find software and documentation updates. Compatibility and project conversion applies to projects moving from GP-Pro/PBIII to GP-Pro EX

2.1	Compatibility with Pro-face® Software	2-2
2.2	How to Update Software	2-21

2.1 Compatibility with Pro-face® Software

Here you can learn how to operate the Project Converter and obtain relevant information on compatibility to convert Project Files (*.prw) created with Digital Electronics Corporation's GP-PRO/PBIII for Windows into GP-Pro EX Project files (*.prx).

NOTE

- For information on compatibility and restrictions between GP-PRO/PBIII for Windows and GP-Pro EX, refer to Pro-face Support Site "Otasuke Pro!".

URL <http://www.pro-face.com/otasuke/>

 Click Me!

2.1.1 Compatible Software Versions

The Project Converter converts project files (*.prw) created by GP-PRO/PBIII for Windows software Ver.1.0 to Ver.7.0.

NOTE

- Project files (*.prw) created by GP-PRO/PBIII for Windows Ver.7.1 and Ver.7.2 are converted except the features added to each software version.

2.1.2 Model Names Before and After Conversion

After conversion, the [GP Type] (indicated the model name) on a Project File created with GP-PRO/PBIII for Windows (*.prw) will be referred to as [Display Type], and the model name will change as well.

The compatible models include GP70/77R/2000, GLC Series and ST400 Series.

NOTE

- Not compatible with LT/Factory Gateway
- For project files created by GP-PRO, GP-PROII, GP-PROIII, GP-PRO/PBIII (DOS), and Parts Box, convert the screen data into *.prw in GP-PRO/PBIII for Windows and then execute the GP-Pro EX's project converter.
 - ☞ GP-PRO/PBIII for Windows Operation Manual "Chapter 12 Using Conventional Data"

■ GP70/77R Series

Convert From			Convert To		
Series Name	Type	GP Type	Display Unit		
GP70Series	GP-H70 Series	GPH70-LG11-24V	GPH70L	AGP-3301L*1	
		GPH70-LG41-24VP			
		GPH70-SC11-24V	GPH70S		AGP-3301S*1
		GPH70-SC41-24VP			
	GP-270 Series	GP270-LG11-24V	GP270L	AGP-3301L	
		GP270-LG21-24VP			
		GP270-LG31-24V			
		GP270-SC11-24V	GP270S		AGP-3301S
		GP270-SC21-24VP			
		GP270-SC31-24V			
	GP-370 Series	GP370-LG11-24V	GP370L	AGP-3301L	
		GP370-LG21-24VP			
		GP370-LG31-24V			
		GP370-LG41-24VP			
		GP370-SC11-24V	GP370S		AGP-3301S
		GP370-SC21-24VP			
		GP370-SC31-24V			
		GP370-SC41-24VP			
	GP-470 Series	GP470-EG11	GP470	AGP-3500T*2	
		GP470-EG21-24VP			
		GP470-EG31-24V			
	GP-570 Series	GP570-SC11	GP570	AGP-3500T	
		GP570-SC21-24VP			
		GP570-SC31-24V			
		GP570-TC11			
		GP570-TC21-24VP			
		GP570-TC31-24V			
		GP57J-SC11			
GP570-TV11	GP570VM	AGP-3500T*3			
GP-571 Series	GP571-TC11	GP571T	AGP-3500T		
GP-675 Series	GP675-SC11	GP675	AGP-3600T		
	GP675-TC11				
	GP675-TC41-24VP				
GP-870 Series	GP870-PV11	GP870VM	AGP-3500T*3		
GP-377 Series	GP377-LG11-24V	GP377L	AGP-3300L		
	GP377-LG41-24V				
	GP377-SC11-24V	GP377S		AGP-3300S	
	GP377-SC41-24V				
GP-377R Series	GP377R-TC11-24V	GP377R	AGP-3300T		
	GP377R-TC41-24V				
GP77R Series	GP-477R Series	GP477R-EG11	GP477R	AGP-3500T	
		GP477R-EG41-24VP			
	GP-577R Series	GP577R-SC11	GP577R		
		GP577R-SC41-24VP			
		GP577R-TC11			
	GP577R-TC41-24VP				

- *1 Projects (*.prw) set up with the Handy type GP (*.prw) are converted to projects (*.prx) for normal GPs. As a result, Operation Switch and Function Switch settings are not converted.
- *2 Converting changes the display type to a 640x480 (VGA) resolution.
- *3 The video window display feature (V-tag) is not converted.

■ GP2000 Series

Convert From			Convert To		
Series Name		Type	GP Type	Display Unit	
GP2000 Series	GP2000H Series	GP-2301H Series	GP2301H-LG41-24V	GP2301HL	AGP-3301L*1*2
			GP2301H-SC41-24V	GP2301HS	AGP-3301S*1*2
		GP-2401H Series	GP2401H-TC41-24V	GP2401H	AGP-3400S*1*2
	GP-2300 Series	GP2300-LG41-24V	GP2300L	AGP-3300L	
		GP2300-TC41-24V	GP2300	AGP-3300T	
	GP-2301 Series	GP2301-LG41-24V	GP2301L	AGP-3301L	
		GP2301-SC41-24V	GP2301S	AGP-3301S	
		GP2301-TC41-24V	GP2301	AGP-3301S	
	GP-2400 Series	GP2400-TC41-24V	GP2400	AGP-3400T	
	GP-2401 Series	GP2401-TC41-24V	GP2401	AGP-3400S	
	GP-2500 Series	GP2500-TC11	GP2500	AGP-3500T*3	
		GP2500-TC41-24V			
	GP-2501 Series	GP2501-SC11	GP2501S	AGP-3500S	
		GP2501-TC11	GP2501	AGP-3500T	
	GP-2600 Series	GP2600-TC11	GP2600	AGP-3600T*3	
GP2600-TC41-24V					
GP-2601 Series	GP2601-TC11	GP2601	AGP-3600T		

- *1 Handy type GPs are changed to the project files for a normal type GP (*.prx). Therefore, Operation Switch and Function Switch settings are not converted.
- *2 The GP2000H series vibration function cannot be changed.
- *3 The video window display feature (V-tag) is not converted..

■ GLC Series

Convert From		Convert To	
Series Name		Type	Display Unit
GLC Series	GLC100S Series	GLC100-SC41-24V	AGP-3300S-FN1M
	GLC100L Series	GLC100-LG41-24V	AGP-3300L-FN1M
	GLC300 Series	GLC300-TC41-24V	AGP-3500T-FN1M
	GLC2300L Series	GLC2300-LG41-24V	AGP-3300L-FN1M
	GLC2300 Series	GLC2300-TC41-24V	AGP-3300T-FN1M
	GLC2400 Series	GLC2400-TC41-24V	AGP-3400T-FN1M
	GLC2500 Series	GLC2500-TC41-24V	AGP-3500T-FN1M
		GLC2500-TC41-200V	
	GLC2600 Series	GLC2600-TC41-24V	AGP-3600T-FN1M
		GLC2600-TC41-200V	

■ **ST400 Series**

Convert From				Convert To
Series Name	Type	GP Type	Display Unit	
ST400 Series	ST400	ST400-AG41-24V	ST400	AGP-3200A
	ST401	ST401-AG41-24V	ST401	
	ST402	ST402-AG41-24V	ST402	
	ST403	ST403-AG41-24V	ST403	

NOTE

- In the ST400 SERIES, the function key settings, Logic Data and Video Screen cannot be converted.
- The backlight 2-color change function on the ST403 can be converted to AGP-3200A

2.1.3 Devices before and after Conversion

Conversion changes the [Device/PLC Type] to the corresponding device/PLC name in GP-ProEX. Some devices/PLCs cannot be converted.

NOTE

- After conversion, the name of the GP Type is also changed.
 - ☞ “2.1.2 Model Names Before and After Conversion” (page 2-2)
- For project files created by GP-PRO, GP-PROII, GP-PROIII, GP-PRO/PBIII (DOS), and Parts Box, convert the screen data into *.prw in GP-PRO/PBIII for Windows and then execute the GP-Pro EX's project converter.
 - ☞ GP-PRO/PBIII for Windows Operation Manual "Chapter 12 Using Conventional Data"

Displays up to GP-PRO/PBIII for Windows Ver.7.0		GP-Pro EX Display	
Maker	Device/PLC Name	Maker	Device/PLC Name
Digital Electronics Corporation of Japan	Memory Link SIO Type	Digital Electronics Corporation of Japan	Memory Link
	Memory Link Ethernet Type		
Mitsubishi Electric Corporation	Mitsubishi Electric MELSEC-AnN (LINK)	Mitsubishi Electric Corporation	A Series Computer Link
	MITSUBISHI MELSEC-AnN (CPU)		A Series CPU Direct
	MITSUBISHI MELSEC-AnA (LINK)		A Series Computer Link
	MITSUBISHI MELSEC-AnA (CPU)		A Series CPU Direct
	MITSUBISHI MELSEC-A (JPCN1)		Not converted
	MITSUBISHI MELSEC-A (ETHER)		A Series Ethernet
	MITSUBISHI MELSEC-F2 SERIES		Not converted
	MITSUBISHI MELSEC-FX (CPU)		FX Series CPU Direct
	MITSUBISHI MELSEC-FX 2 (LINK)		FX Series Computer Link
	MITSUBISHI MELSEC-FX (CPU2)		FX Series CPU Direct
	MITSUBISHI MELSEC-FX 1:N Comm.		FX Series Computer Link
	Mitsubishi Electric MELSEC-QnA (LINK)		Q/QnA Serial Communication
	Mitsubishi Electric MELSEC-QnA (CPU)		QnA Series CPU Direct
	Mitsubishi Electric MELSEC-Q (CPU)		Q Series CPU Direct
	Mitsubishi Electric MELSEC-QUTE (CPU)		QUTE Series CPU Direct
	Mitsubishi Electric MELSEC-Q (ETHER)		Q/QnA Series Ethernet
	MITSUBISHI MELSECNET/10		Not converted
	MITSUBISHI FREQROL Series		
	MITSUBISHI CC-Link Type		
MITSUBISHI CC-Link Intelligent Device			

Continued

Displays up to GP-PRO/PBIII for Windows Ver.7.0		GP-Pro EX Display	
Maker	Device/PLC Name	Maker	Device/PLC Name
Omron Corporation	OMRON SYSMAC-C SERIES	Omron Corporation	C/CV Series HOST Link
	OMRON SYSMAC-C 1:n Comm.		
	OMRON SYSMAC-CV SERIES		
	OMRON SYSMAC-CS1 SERIES		CS/CJ Series HOST Link
	OMRON SYSMAC-CS1 (ETHER)		CS/CJ Series Ethernet
	OMRON THERMAC NEO Series		Controller CompoWay/F
Sharp Corporation	SHARP New Satellite JW SERIES	Sharp MS	JWSeries Computer LinkSIO
Yokogawa Electric Corporation	YOKOGAWA FACTORY ACE 1:1 Comm.	Yokogawa Electric Corporation	Personal Computer Link SIO
	YOKOGAWA FACTORY ACE 1:n Comm.		
	Yokogawa Electric Corporation FA-M3 (ETHER)		Personal Computer Link Ethernet
	Yokogawa Electric Corporation FCN/FCJ Modbus RTU 1:n		Not converted
Fuji Electric Corporation	FUJI MICREX-F SERIES	Fuji Electric FA Components & Systems Co., Ltd.	MICREX-F Series SIO
	Fuji Electric FA Components & Systems Co., Ltd. MICREX-F Series (T Link)		Not converted
	Fuji Electric FA Components & Systems Co., Ltd. MICREX-F Series (FLT)		
	Fuji Electric FA Components & Systems Co., Ltd. FLEX-PC (LINK)		
	Fuji Electric FA Components & Systems Co., Ltd. FLEX-PC (CPU)		
	FUJI MICREX-SX SERIES		
	FUJI Inverter		
	TEMPERATURE PXR		
Toyoda Machine Works, Ltd.	TOYODA TOYOPUC-PC2 SERIES	JTEKT Corporation	TOYOPUC CMP-LINK SIO
	TOYODA TOYOPUC-PC2 1:n Comm.		
	TOYODA TOYOPUC-PC3J SERIES		
	TOYODA TOYOPUC-PC3J 1:n Comm.		
Yaskawa Electric Corporation	YASKAWA Memocon-SC SERIES	Yaskawa Electric Corporation	MEMOBUS SIO
	YASKAWA GL120/130 SERIES		
	YASKAWA PROGIC8 SERIES		Not converted
	YASKAWA MP2000/MP900/CP9200SH		MEMOBUS SIO
	YASKAWA MP2000/MP920 (ETHER)		MEMOBUS Ethernet
	YASKAWA Inverter		
	YASKAWA MP Panel SERIES		Not converted

Continued

Displays up to GP-PRO/PBIII for Windows Ver.7.0		GP-Pro EX Display	
Maker	Device/PLC Name	Maker	Device/PLC Name
Hitachi Ltd.	HITACHI HIDIC-S10 a SERIES		Not converted
	HITACHI HIDIC-S10E (JPCN/1)		
	HITACHI HIZAC-EC SERIES		
	HITACHI S10V Series (ETHER)		
Hitachi Industrial Equipment Systems Co., Ltd.	HITACHI IES HIDIC-H SERIES	Hitachi Industrial Equipment Systems Co., Ltd.	HSeries SIO
	HITACHI IES HIDIC-H SERIES2		HSeries Ethernet
	Hitachi Industrial Equipment Systems Co.,Ltd. HIDIC H (ETHER)		
	HITACHI IES SJ300/L300P SERIES		Not converted
Toshiba Corporation	TOSHIBA PROSEC-EX2000 SERIES		Not converted
	TOSHIBA PROSEC-T SERIES		
	TOSHIBA PROSEC-T (ETHER)		
Matsushita Electric Works, Ltd.	MATSUSHITA Electric Works MEWNET-FP SERIES	Matsushita Electric Works, Ltd.	FP Series Computer Link SIO
Koyo Electronics Industries Co., Ltd.	KOYO ELECTRONICS KOSTAC-SG8 SERIES		Not converted
	KOYO ELECTRONICS KOSTAC-SR21/22 SERIES		
	KOYO ELECTRONICS DL205/405 SERIES		
	KOYO ELECTRONICS DL305 SERIES		
Toshiba Machine Co., Ltd.	TOSHIBA MACHINE TC200 SERIES		Not converted
	TOSHIBA MACHINE TC200-S SERIES		
GE Fanuc Automation	GE Fanuc SERIES 90 SNP-X	GE Fanuc Automation	Series 90-30/70 SNP-X
	GE Fanuc SERIES 90-30/70 SNP		Series 90-30/70 SNP
	GE Fanuc SERIES S90-30/70 (ETHER)		Series90 Ethernet
FANUC Ltd.	FANUC Power Mate SERIES	FANUC Ltd.	Power mate
IDEC IZUMI Corporation	IDEC IZUMI IDEC_1		Not converted
	IDEC IZUMI IDEC_2		
	IDEC IZUMI IDEC_3		
	IDEC IZUMI MICRO3		
	IDEC IZUMI FC3/FC4A Series		

Continued

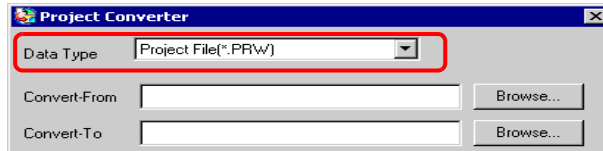
Displays up to GP-PRO/PBIII for Windows Ver.7.0		GP-Pro EX Display	
Maker	Device/PLC Name	Maker	Device/PLC Name
Siemens AG	SIEMENS S5 90-115 SERIES	Siemens AG	SIMATIC S5CPU Direct
	SIEMENS S5 135-155 SERIES		
	SIEMENS S5 3964 (R) protocol		Not converted
	SIEMENS S7 200 PPI		
	SIEMENS S7 200 via MPI		SIMATIC S7 MPI Direct
	SIEMENS S7 300/400 via MPI		
	SIMATIC S7 via 3964/RK512		SIMATIC S7 3964(R)/RK512
	SIEMENS S7 via 300/400 Ethernet		SIMATIC S7 Ethernet/TCP
	SIMATIC 545/555 CPU		Not converted
Rockwell (Allen-Bradley)	Allen Bradley PLC-5	Rockwell Automation, Inc.	DF1
	Allen Bradley SLC5/03, SLC5/04		
	Allen Bradley Control Logix DF1		
	AB PLC-5 DataHighway+		Not converted
	AB SLC500 DH485		DH-485
	AB Remote I/O		Not converted
	Allen Bradley SLC505 Ethernet		EtherNet/IP
	Allen Bradley Control Logix Ethernet		
Keyence	KEYENCE KZ-300 SERIES	Keyence	Not converted
	KEYENCE KZ-A500 SERIES (CPU)		
	KEYENCE KZ-A500 SERIES		
	KEYENCE KV-10/16/24/40 SERIES		
	KEYENCE KV-10_80RW SERIES		
	KEYENCE KV-700 SERIES (CPU)		KV-700/1000 Series CPU Direct
Shinko Electric Co. Ltd.	SHINKO ELECTRIC SELMART SERIES		Not converted
Matsushita Electric Industrial Co., Ltd.	Matsushita Electric Industrial Panadac-7000 Series		Not converted
	Matsushita Electric Industrial MINAS-A/S Series		
Modicon Corp.	Modicon Modbus Master	Schneider Electric Industries	MODBUS SIO Master
	Modicon Modbus (Slave)		MODBUS Slave
	Modicon Modbus (Plus)		Not converted
FATEK	FATEK FACON FB		Not converted
Orimvexta Co., Ltd	E1 SERIES		Not converted
PROFIBUS	PROFIBUS-DP	PROFIBUS International	PROFIBUS DP Slave
Device Net	Device Net Slave I/O	ODVA	Device Net Slave
INTERBUS	INTERBUS-SLAVE		Not converted
JPCN-1	JPCN/1 (Standard)		Not converted
Yamatake Corporation	Yamatake Temperature Controller SDC Series	Yamatake Corporation	Digital Controller SIO

Continued

Displays up to GP-PRO/PBIII for Windows Ver.7.0		GP-Pro EX Display	
Maker	Device/PLC Name	Maker	Device/PLC Name
RKC Instrument Inc.	RKC INSTRUMENT CB/SR-Mini SERIES (MODBUS)	RKC Instrument Inc.	Controller MODBUS SIO
	RKC INSTRUMENT CB/REX-F/LE100 SERIES (RKC)		Controller RKC SIO
Shinko Technos Co., Ltd.	Shinko Technos Controller		Not converted
TOHO Electronics Co., Ltd.	Controller TTM Series		Not converted
FENWAL CONTROLS OF JAPAN, LTD.	Fenwal AL Series		Not converted
JT Engineering Inc.	JTE Analyzer		Not converted
Meidensha Corporation	Meidensha Corporation (ETHERNET)	Meidensha Corporation	UNISEQUESERIES Ethernet
Shimaden Co., Ltd.	SHIMADEN Control Device		Not converted
CHINO Corporation	CHINO Controller (MODBUS)		Not converted
Schneider Electric	Schneider TSX via Uni-Telway	Schneider Electric Industries	Uni-Telway
	Schneider Modbus RTU 1:n		MODBUS SIO Master
	Schneider Modbus Ethernet		MODBUS TCP Master
Toshiba Schneider Inverter Corporation	Toshiba Schneider Inverter		Not converted
Ubon	UbonUPZ Series		Not converted
HIOKI E.E. Corporation	HIOKI E.E. Smart Site (MODBUS TCP)		Not converted

2.1.4 Using the Project Converter

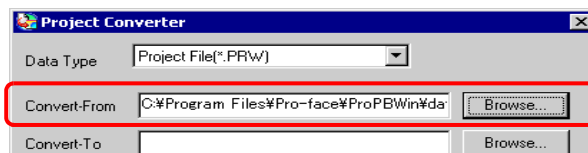
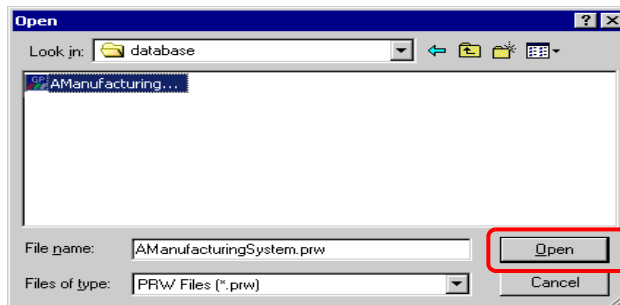
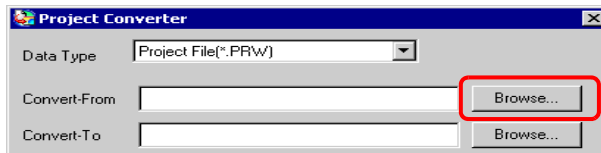
- 1 Click [Start], [Program (P)] (Windows® XP: [All programs(P)]), [Pro-face], [GP-Pro EX ***] (*.A version will appear in **), then click [Project Converter].
- 2 The Project Converter window opens and the [Project Converter] dialog box appears. Select [Project File (*.PRW)] from the [Data Type] drop-down list.




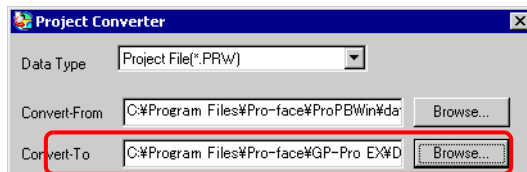
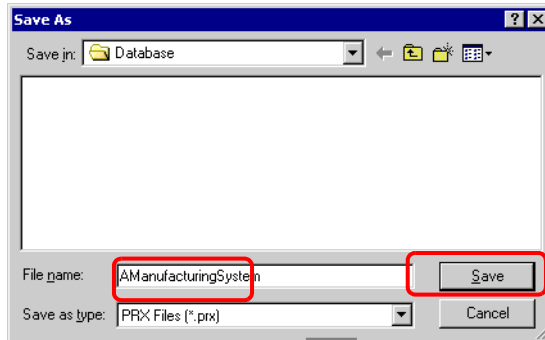
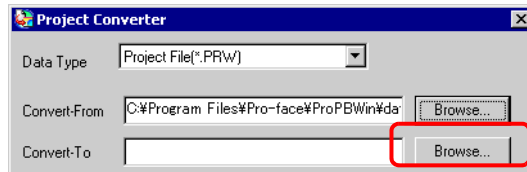
NOTE

- To convert the files in the [Pro-Control Editor], select [Logic File (*.WLL)] from the Data Type drop-down list. To convert partial program files (*.wlp) or subroutine program files (*.wlf), you need to save the files in Project File format with GP-PRO/PBIII then open them in the Project Converter.

- 3 Click the [Convert From Reference] button and select a GP-Pro/PBIII for Windows project file. Click [Open].

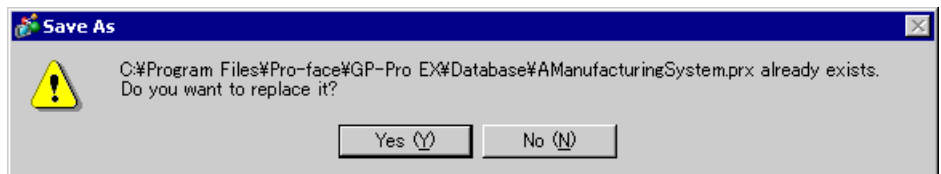



4 In [Convert-To], designate a GP-Pro EX project file (*.prx). Click the [Browse] button, input a new [File name] (For example "A Manufacturing System.prx"), and click . A new project file name is set to [Convert-To].

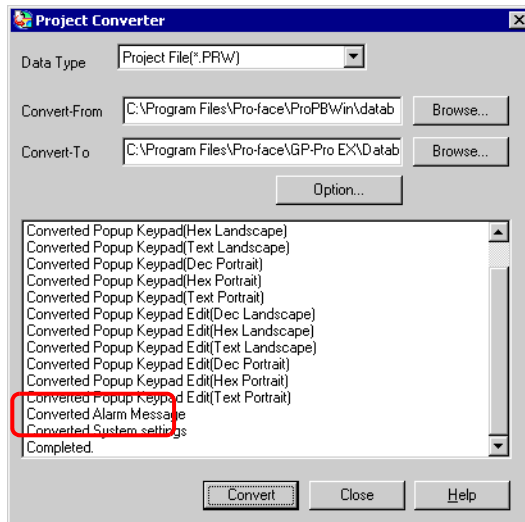
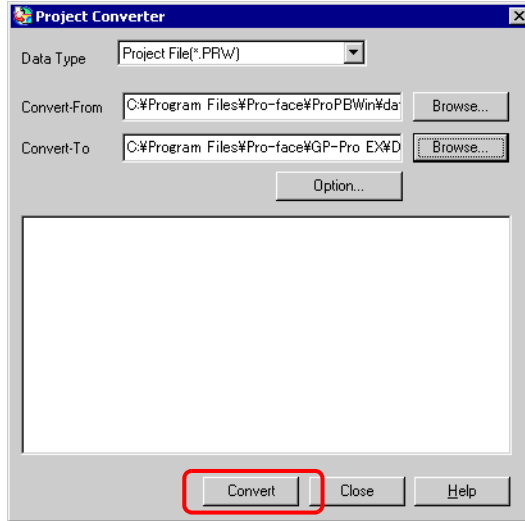



NOTE

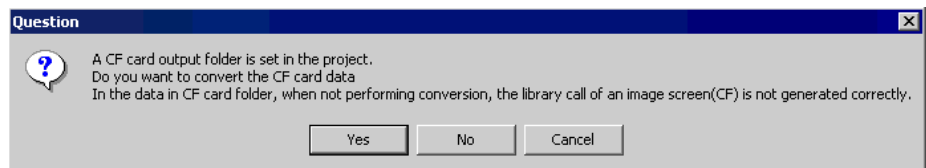
- If a [Convert To] file already exists, you are prompted to keep or overwrite this file.

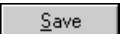
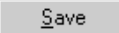



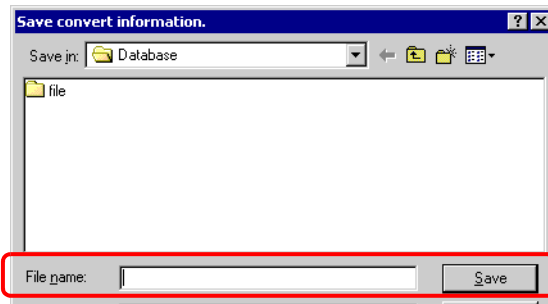
5  Click the icon to start the conversion.

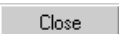


- NOTE**
- When the following dialog box appears, set the CF Card folder.
 " ■ Converting the CF Card Data Destination Folder" (page 2-14)



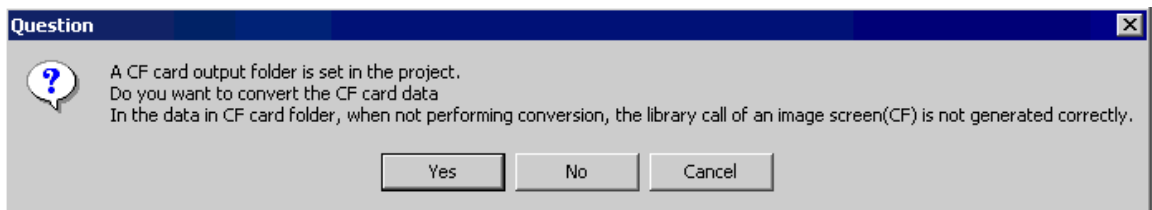
6 The [Save As] dialog box appears. If you click , you can save the conversion information in a text file. To save the file, enter a file name and click . If you click , you return to the [Project Converter] dialog box without saving the conversion information.



7 Click  to close the [Project Converter] dialog box.

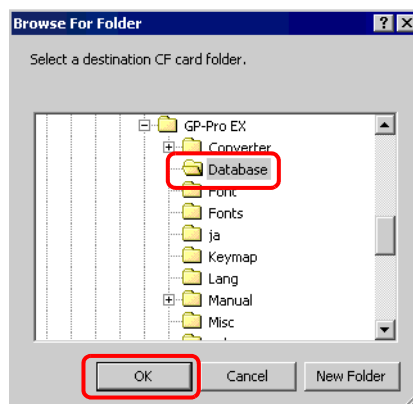
■ Converting the CF Card Data Destination Folder

When converting a project file (*.PRW) that uses the CF Card Data Destination Folder, you are prompted to convert this destination folder as well.



To convert the folder, click [Yes]. In the [Browse for Folder] dialog box, select the appropriate folder and click [OK].

You can also click [New Folder] to create a new folder in a directory.



NOTE

- If you select [No] to convert the CF Card Data Destination Folder, called images may not be properly displayed.

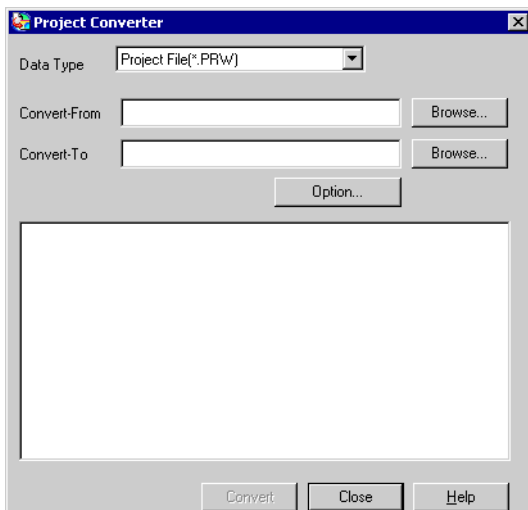
2.1.5 Setting up the Project Converter

Convert files created with GP-PRO/PBIII for Windows or Pro-Control Editor to project files for the GP-Pro EX.

NOTE

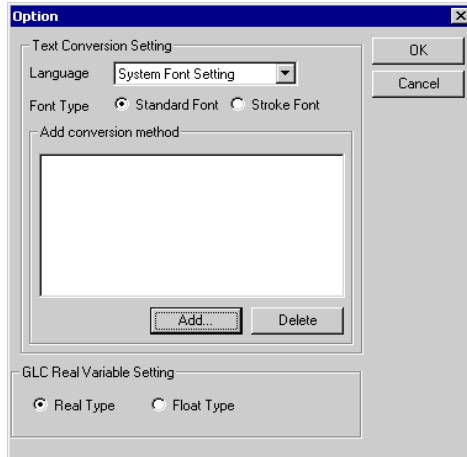
- You cannot convert GP-Pro Ex projects to GP-Pro/PBIII for Windows or Pro-Control Editor projects.

■ Project Converter



Setting	Description
Data Type	From the [Data Type] drop-down list, select the type of file you want to convert.
Convert From	Click the [Browse] button to select the file you want to convert. <ul style="list-style-type: none"> If [CF Card Data] is selected in the [Data Type] drop-down list, you need to set up the CF-card destination folder. <p>☞ “ ■ Converting the CF Card Data Destination Folder” (page 2-14)</p>
Convert To	Click the [Browse] button to select the destination folder for the converted project file. <ul style="list-style-type: none"> If [CF Card Data] is selected in the [Data Type] drop-down list, you need to set up the CF-card destination folder. <p>☞ “ ■ Converting the CF Card Data Destination Folder” (page 2-14)</p>
Option	The [Options] dialog box appears. <p>☞ “ ◆ Options” (page 2-16)</p>

◆ Options



Setting	Description
Text Conversion Settings	Set up the screens and data for conversion individually.
Base Language	Select the base language for conversion from [System Font], [ASCII], [Korean], [Chinese (Traditional)], [Chinese (Simplified)], [Japanese].
Font Type	Select [Standard Font] or [Stroke Font].
Add Conversion Method	Click Add. The [Add conversion method] dialog box appears. <div data-bbox="637 908 967 1207" data-label="Image"> </div> <ul style="list-style-type: none"> To delete a conversion method, select the item in the [Options] dialog box and click [Delete].
Screen/Data	Select a screen or data to convert from [Base], [Mark Screen], [Line Graph Screen], [Keypad Screen], [Text Screen], [Window], [Image Screen], [Sound], [Global D-Script], [Extension SIO Script], [D-Script Function], [Data Sampling], [Filing Data], [Log Settings], [CSV Data Transfer Feature], [Alarm Message/Summary], [Bit Log Alarm], [Word Log Alarm], [Logic Data].
Screen/Data Number	<ul style="list-style-type: none"> Individual Specification Specify the number of the screen or data you want to convert. Area Specification Specify the [Start] and the [End Number] of the screen or data you want to convert from 1 to 8999.
Converting Language	Select from [System Font], [ASCII], [Korean], [Chinese (Traditional)], [Chinese (Simplified)], and [Japanese].
GLC Real Variable Setting	Select [Real Variable] or [Float Variable].

2.1.6 Error Messages

If you encounter any messages during project conversion, look them up here.

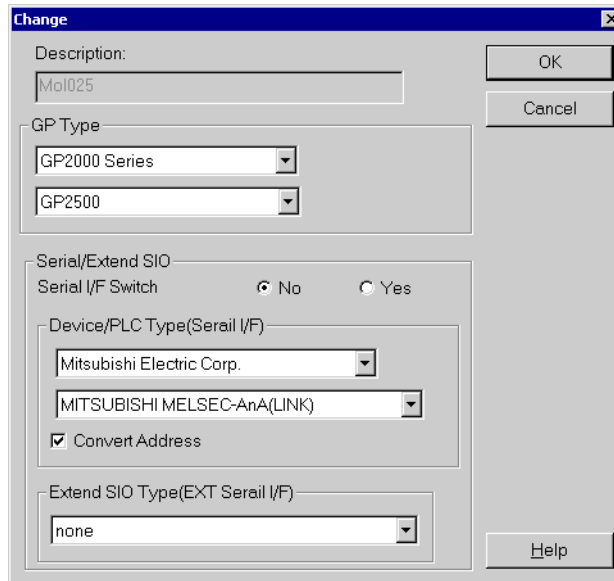
The selected Device/PLC is unavailable for conversion. Change the Device/PLC before conversion.

The selected Device/PLC is not supported by GP-Pro EX. Please select a Device/PLC that is supported by GP-Pro EX in GP-PRO/PBIII for Windows and run the Project Converter again. For the device/PLCs supported by GP-Pro EX, refer to “2.1.3 Devices before and after Conversion” (page 2-6)

- To change [Device/PLC Type] in GP-PRO/PBIII for Windows
 (1) Select the [Device/PLC Type] icon in GP-PRO/PBIII for Windows' Project Manager.



- (2) The [Change] dialog box appears. In the [Device/PLC Type (Serial F)], select the appropriate display unit. Select the [Convert Address] check box.



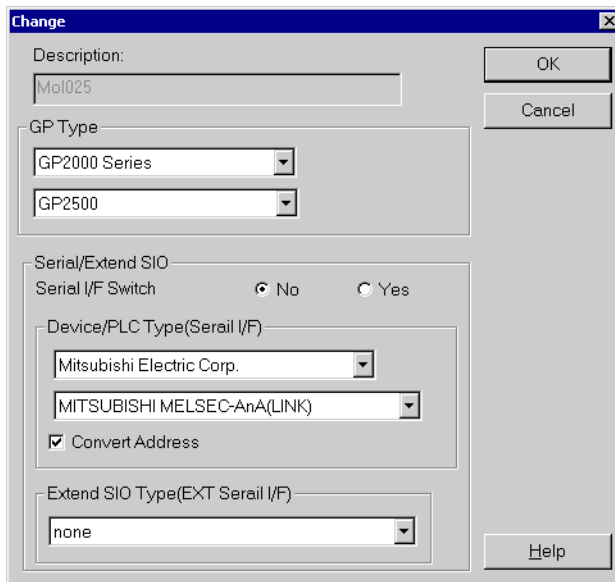
Cannot read the source Device/PLC file.

The source device/PLC type cannot be recognized. Select a Device/PLC that is supported by GP-Pro EX in GP-PRO/PBIII for Windows and run the Project Converter again. For the device/PLCs supported by GP-Pro EX, refer to “2.1.3 Devices before and after Conversion” (page 2-6)

- To change [Device/PLC Type] in GP-PRO/PBIII for Windows
- (3) Select the [Device/PLC Type] icon in GP-PRO/PBIII for Windows' Project Manager.



- (4) The [Change] dialog box appears. In the [Device/PLC Type (Serial F)], select the appropriate display unit. Select the [Convert Address] check box.



The selected model is unavailable for conversion. Change the model.

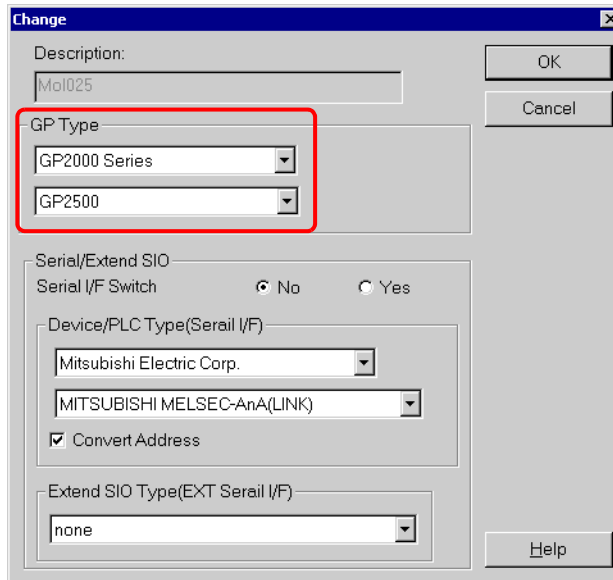
The selected Display Type is not supported by GP-Pro EX. Select a GP Type that is supported by GP-Pro EX in GP-PRO/PBIII for Windows and run the Project Converter again. For the models supported by GP-Pro EX, refer to “2.1.2 Model Names Before and After Conversion” (page 2-2)

- To change [GP Type] in GP-PRO/PBIII for Windows

(5) Select the [GP Type] icon in GP-PRO/PBIII for Windows' Project Manager.



(6) The [Change] dialog box appears from the [GP Type] drop-down list, select the appropriate GP unit. Be aware that the GP may have different features before and after conversion.



Cannot read the model information file.

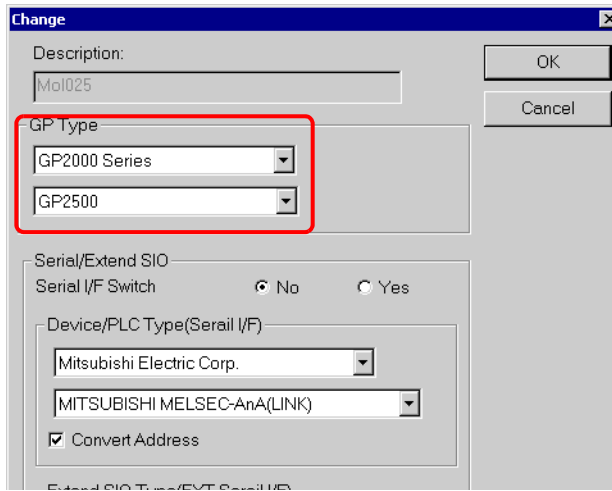
The source GP model cannot be recognized. Select a GP Type that is supported by GP-Pro EX in GP-PRO/PBIII for Windows and run the Project Converter again. For the models supported by GP-Pro EX, refer to “2.1.2 Model Names Before and After Conversion” (page 2-2)

- To change [GP Type] in GP-PRO/PBIII for Windows

(7) Select the [GP Type] icon in GP-PRO/PBIII for Windows' Project Manager.



(8) The [Change] dialog box appears from the [GP Type] drop-down list, select the appropriate GP unit. Be aware that the GP may have different features before and after conversion.



Cannot read AGPCnv.cfg file.

Failed to load GP-Pro EX AGPCnv.cfg file. Install GP-Pro EX again.

Cannot read the prw file.

Failed to read a GP-PRO/PBIII for Windows file (*.prw). Microsoft Windows permissions may restrict access to the GP-PRO/PBIII for Windows file (*.prw). Check the permissions in Windows Explorer.

Cannot access the parts file.

Failed to read a GP-PRO/PBIII for Windows' Part file (*.PDB or *.BPD). Microsoft Windows permissions may restrict access to the GP-PRO/PBIII for Windows' Part file (*.PDB or *.BPD). Check the permissions in Windows Explorer.

Invalid extension.

An incorrect extension is designated in Project Converter [Convert To]. Input a correct extension (*.prx).

2.2 How to Update Software

This section explains how to update GP-Pro EX. Apart from software, there are also update programs for manuals and drivers.

NOTE

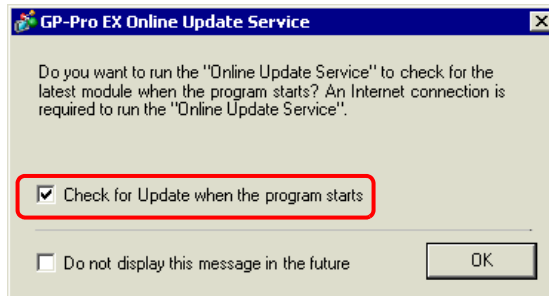
- An Internet connection is required.
- The steps below may change without notice.

2.2.1 Working with Online Update

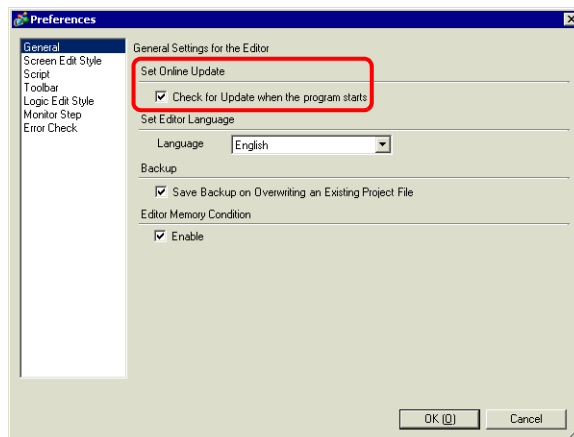
1 From the [Help (H)] menu, select [Confirm Update of GP-Pro EX (U)]

NOTE

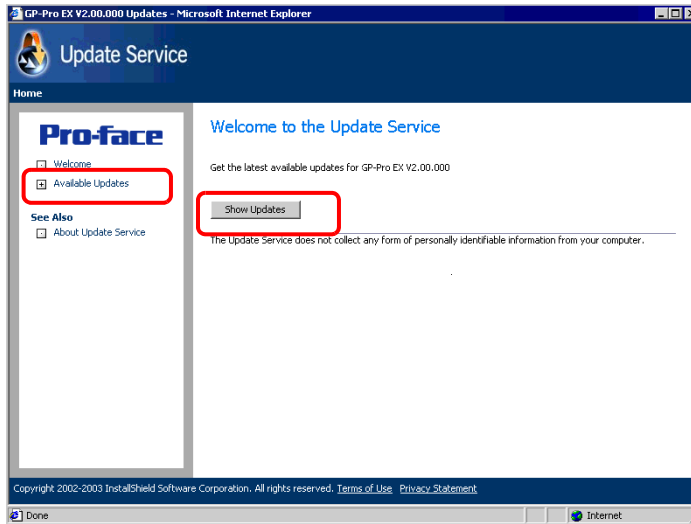
- When you launch GP-Pro EX, the following dialog box appears. To start the online update every time you launch Pro EX, select the [Check for Update when the program starts] check box, then click [OK]. To receive updates manually, clear the check box and click [OK].



To set the automatic updates, from the [View (V)] menu, select [Preferences (O)]. The Options Settings dialog box appears. Select [General] and select the [Check for Update when the program starts] check box. Click [OK].

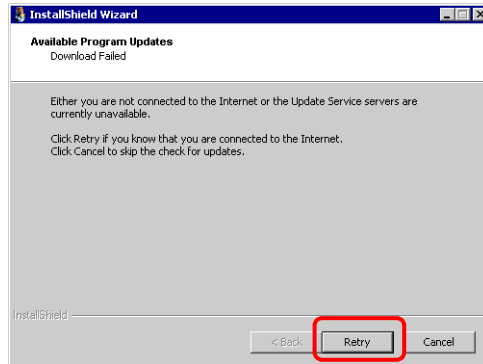


- 2 To check for updates, when the [Welcome to the Update Service] window opens, click the [Available Updates] or [Show Updates] button.

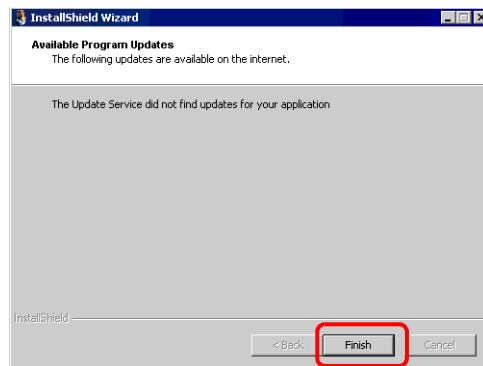


NOTE

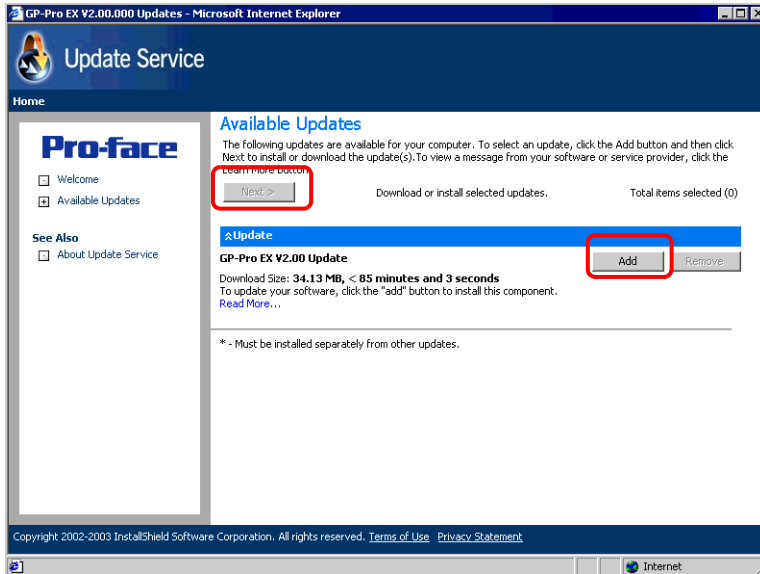
- If you do not have an Internet connection, the following error occurs. Once you are connected, click the [Retry] button.



- After searching, if there are no program updates, the following dialog box appears. Click the [Finish] button to finish.

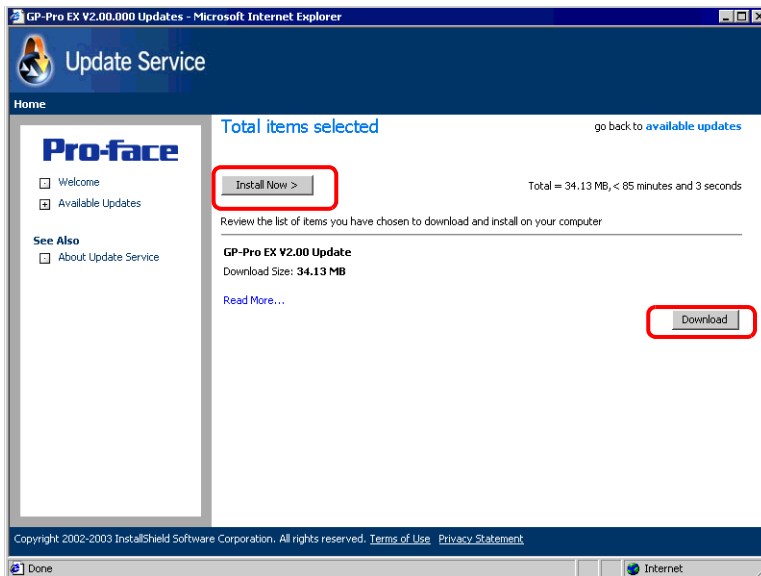


- 3 When the [Available Updates] window opens, confirm the program updates. Select the items you want updated with the [Add] button, and click the [Next] button.

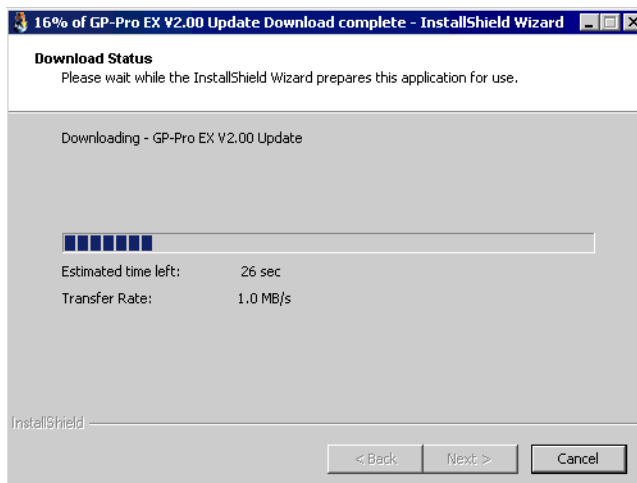
**NOTE**

- **Update** You can click the button to make sure the program is up to date. If there is an arrow pointing down, click the arrow to expand the selection.
- The previous [Available Updates] screen update item is an example. You can confirm the latest program updates on your computer.

- 4 The [Total items selected] screen window opens. You can either install all selected items or install items separately.

**NOTE**

- Please close all GP-Pro EX project files before installing the updates
- Click the [Install Now >] button
The selected program updates are downloaded.
After the downloads are complete, click [Update] to begin. Follow the steps through the wizard.
To cancel the installation, click the [Cancel] button.



- Click the [Download] button
Downloads the selected program updates. Click the [Download] button, select a save location for the program updates, and click the [Save] button. Next, click the [Finish] button to complete the wizard. Click the saved program updates (*.exe) to start the installation.

- 5 The installation of product updates for the software is now complete.
When the installation of the manual product updates completes, the message "The setup was completed" appears. Click [OK] to finish.

