

# 4 | Workflow Procedure

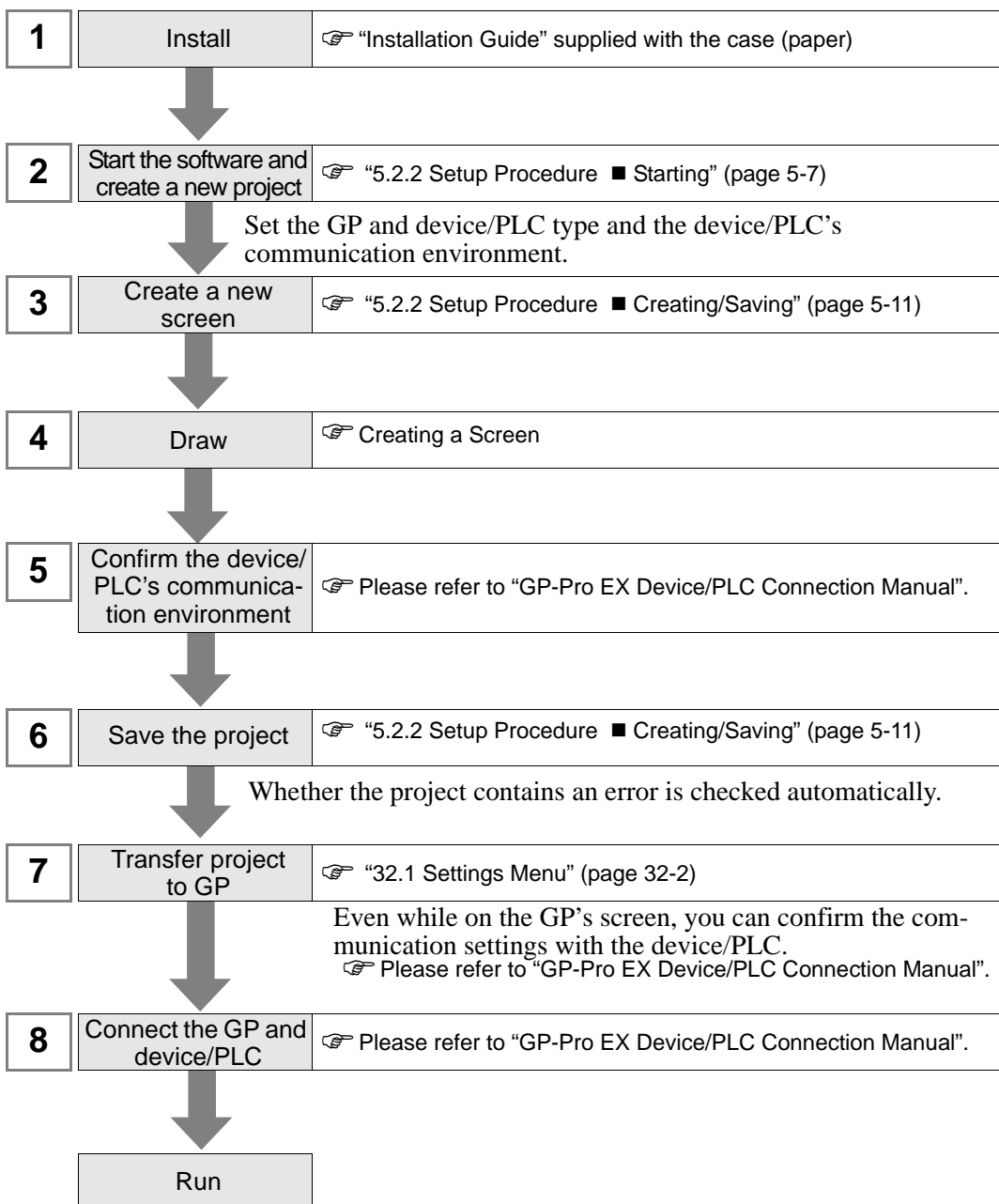
This chapter explains about the development procedure in GP-Pro EX.

|     |  |     |
|-----|--|-----|
| 4.1 | When Only Creating Screens.....          | 4-2 |
| 4.2 | Creating a Screen and Logic Program..... | 4-3 |

## 4.1 When Only Creating Screens

The following shows the work flow for only creating screens, consisting of installing GP-Pro EX, starting the software, creating the screens, and connecting to the device/PLC, up to the operation of the GP-Pro EX.

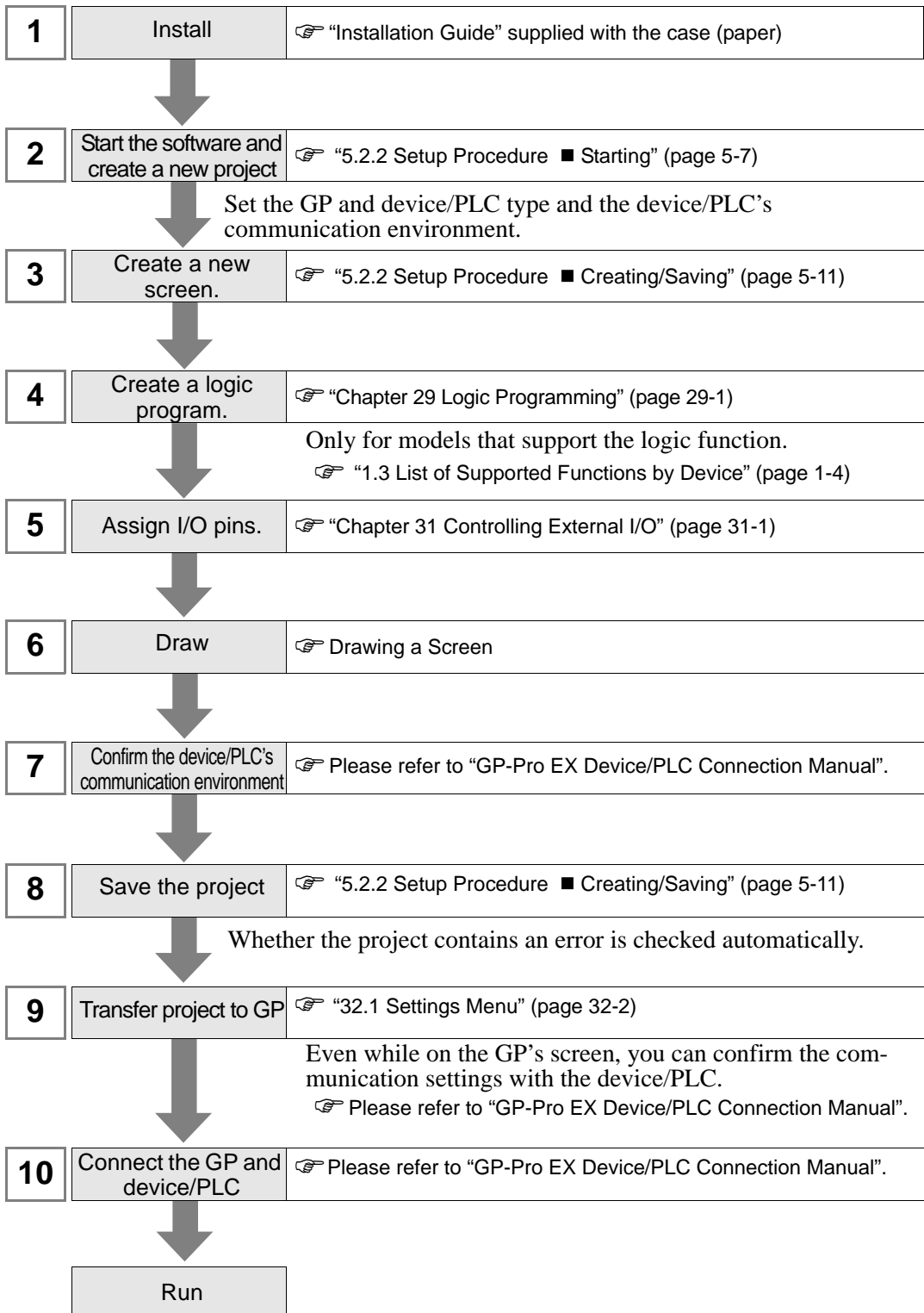
Click the reference to go to the corresponding page.



## 4.2 Creating a Screen and Logic Program

The following shows the work flow for creating both a screen and a logic program, consisting of installing GP-Pro EX, starting the software, creating the screens, and connecting to the device/PLC, up to the operation of the GP-Pro EX.

Click the reference to go to the corresponding page.



---

# *Memo*