

2



Using GP-Pro EX

This chapter explains about “Compatibility Information”, which is necessary to convert Pro-face’s GP-PRO/PBIII for Windows’ project files into GP-Pro EX’s files, “Project Converter Operation Method”, and the update method for the software and manuals.

| | | |
|-----|---|------|
| 2.1 | About Compatibility with Pro-face® Software | 2-2 |
| 2.2 | How to Update Software | 2-19 |

2.1 About Compatibility with Pro-face® Software

This chapter explains about necessary information to convert the project files (*.prw) created with Pro-face's GP-PRO/PBIII for Windows into the GP-Pro EX's project files (*.prw), and how to operate the Project Converter.

IMPORTANT

- For information on compatibility between GP-PRO/PBIII for Windows and GP-Pro EX and restrictions, also refer to GP-Pro EX Support Site "Otasuke Pro!".

URL <http://www.pro-face.com/otasuke/>

Click Me!

2.1.1 Convertible Software Versions

Converts project files (*.prw) created by GP-PRO/PBIII for Windows software Ver.1.0 to Ver.7.0 and the accompanying data set.

IMPORTANT

- Project files (*.prw) created by GP-PRO/PB III for Windows Ver.7.1 and Ver.7.2 are converted except the features added to each software version.

2.1.2 List of GP Models before and after the Conversion

After conversion, [GP Type] (indicated Model Name) on a project file (*.prw) created by GP-PRO/PBIII for Windows is changed to [Display Type], and the model name is also changed.

Supported models are GP70/77R/2000 Series and ST400 Series.

IMPORTANT

- ST403/GLC/LT/Factory Gateway is not supported.
- For project files created by GP-PRO, GP-PROII, GP-PROIII, GP-PRO/PBIII (DOS), and Parts Box, convert the screen data into *.prw in GP-PRO/PBIII for Windows and then execute the GP-Pro EX's project converter.
 - ☞ GP-PRO/PBIII for Windows Operation Manual "Chapter 12 Using Conventional Data"

■ GP77/77R Series

| Convert From | | | Convert To | |
|---------------|-----------------|------------------|-------------------------|-------------------------|
| Series Name | Type | GP Type | Display Type | |
| GP70 Series | GP-H70 Series | GPH70-LG11-24V | GPH70L | AGP-3301L* ¹ |
| | | GPH70-LG41-24VP | | |
| | | GPH70-SC11-24V | GPH70S | |
| | | GPH70-SC41-24VP | | |
| | GP-270 Series | GP270-LG11-24V | GP270L | AGP-3301L |
| | | GP270-LG21-24VP | | |
| | | GP270-LG31-24V | | |
| | | GP270-SC11-24V | GP270S | |
| | | GP270-SC21-24VP | | |
| | | GP270-SC31-24V | | |
| | GP-370 Series | GP370-LG11-24V | GP370L | AGP-3301L |
| | | GP370-LG21-24VP | | |
| | | GP370-LG31-24V | | |
| | | GP370-LG41-24VP | | |
| | | GP370-SC11-24V | GP370S | |
| | | GP370-SC21-24VP | | |
| | | GP370-SC31-24V | | |
| | | GP370-SC41-24VP | | |
| | GP-470 Series | GP470-EG11 | GP470 | AGP-3500T* ² |
| | | GP470-EG21-24VP | | |
| | | GP470-EG31-24V | | |
| | GP-570 Series | GP570-SC11 | GP570 | AGP-3500T |
| | | GP570-SC21-24VP | | |
| | | GP570-SC31-24V | | |
| | | GP570-TC11 | | |
| | | GP570-TC21-24VP | | |
| | | GP570-TC31-24V | | |
| | | GP570-TV11 | GP570VM | |
| GP-571 Series | GP571-TC11 | GP571IT | AGP-3500T | |
| GP-675 Series | GP675-SC11 | GP675 | AGP-3600T | |
| | GP675-TC11 | | | |
| | GP675-TC41-24VP | | | |
| GP-870 Series | GP870-PV11 | GP870VM | AGP-3500T* ³ | |
| GP-377 Series | GP377-LG11-24V | GP377L | AGP-3300L | |
| | GP377-LG41-24V | | | |
| | GP377-SC11-24V | GP377S | | |
| | GP377-SC41-24V | | | |
| GP77R Series | GP-377R Series | GP377R-TC11-24V | GP377R | AGP-3300T |
| | | GP377R-TC41-24V | | |
| | GP-477R Series | GP477R-EG11 | GP477R | |
| | | GP477R-EG41-24VP | | |
| | GP-577R Series | GP577R-SC11 | GP577R | |
| | | GP577R-SC41-24VP | | |
| | | GP577R-TC11 | | |
| | | GP577R-TC41-24VP | | |

1 Handy type GP (.prw) is changed to project files for normal type GP (*.prx). Therefore Operation Switch and Function Switch's settings are not converted.

*2 If you force to convert it, the resolution will be changed to 640 x 480 (VGA) display type.

*3 The video window display feature (V-tag) is not converted.

■ GP2000 Series

| Convert From | | | Convert To | | |
|----------------|-----------------|-----------------|------------------|--------------|-------------------|
| Series Name | | Type | GP Type | Display Type | |
| GP2000 Series | GP2000H Series | GP-2301H Series | GP2301H-LG41-24V | GP2301HL | AGP-3301L *1*2 |
| | | | GP2301H-SC41-24V | GP2301HS | AGP-3301S *1*2 |
| | | GP-2401H Series | GP2401H-TC41-24V | GP2401H | AGP-3400S *1*2 |
| | GP-2300 Series | GP-2300 Series | GP2300-LG41-24V | GP2300L | AGP-3300L |
| | | | GP2300-TC41-24V | GP2300 | AGP-3300T |
| | | GP-2301 Series | GP2301-LG41-24V | GP2301L | AGP-3301L |
| | | | GP2301-SC41-24V | GP2301S | AGP-3301S |
| | | | GP2301-TC41-24V | GP2301 | AGP-3301S |
| | | GP-2400 Series | GP2400-TC41-24V | GP2400 | AGP-3400T |
| | | GP-2401 Series | GP2401-TC41-24V | GP2401 | AGP-3400S |
| | | GP-2500 Series | GP2500-TC11 | GP2500 | AGP-3500T*3 |
| | | | GP2500-TC41-24V | | |
| | | GP-2501 Series | GP2501-SC11 | GP2501S | AGP-3500S |
| | GP2501-TC11 | | GP2501 | AGP-3500T | |
| GP-2600 Series | GP2600-TC11 | GP2600 | AGP-3600T*3 | | |
| | GP2600-TC41-24V | | | | |
| GP-2601 Series | GP2601-TC11 | GP2601 | AGP-3600T | | |

1 The handy type GP are changed to the project files for normal type GP (.prx). Therefore the settings of the operation switch and the function switch' are not converted.

*2 You cannot change the GP2000H series-only vibration function.

*3 The video window display feature (V-tag) is not converted.

■ GLC Series

| Convert From | | Convert To | |
|-------------------|-----------------|-------------------|----------------|
| Series Name | Type | Display Type | |
| GLC Series | GLC100S Series | GLC100-SC41-24V | AGP-3300S-FN1M |
| | GLC100L Series | GLC100-LG41-24V | AGP-3300L-FN1M |
| | GLC300 Series | GLC300-TC41-24V | AGP-3500T-FN1M |
| | GLC2300L Series | GLC2300-LG41-24V | AGP-3300L-FN1M |
| | GLC2300 Series | GLC2300-TC41-24V | AGP-3300T-FN1M |
| | GLC2400 Series | GLC2400-TC41-24V | AGP-3400T-FN1M |
| | GLC2500 Series | GLC2500-TC41-24V | AGP-3500T-FN1M |
| | | GLC2500-TC41-200V | |
| | GLC2600 Series | GLC2600-TC41-24V | AGP-3600T-FN1M |
| GLC2600-TC41-200V | | | |

■ ST400 Series

| Convert From | | | Convert To | |
|--------------|-------|----------------|--------------|---------------|
| Series Name | Type | GP Type | Display Type | |
| ST400 Series | ST400 | ST400-AG41-24V | ST400 | AGP-3302B*1 |
| | ST401 | ST401-AG41-24V | ST401 | |
| | ST402 | ST402-AG41-24V | ST402 | |
| | ST403 | ST403-AG41-24V | ST403 | Not converted |

*1 The Function Key's settings for ST400 Series are not converted.

2.1.3 List of Devices before and after the Conversion

After conversion, [Device/PLC Type] on a project file (*.prw) created by GP-PRO/PBIII for Windows is changed to another name. Some devices/PLCs are not converted.

IMPORTANT

- After conversion, the name of GP Type is also changed.
- ☞ “2.1.2 List of GP Models before and after the Conversion” (page 2-2)
- For project files created by GP-PRO, GP-PROII, GP-PROIII, GP-PRO/PBIII (DOS), and Parts Box, convert the screen data into *.prw in GP-PRO/PBIII for Windows and then execute the GP-Pro EX’s project converter.
- ☞ GP-PRO/PBIII for Windows Operation Manual “Chapter 12 Using Conventional Data”

| Maker | Device/PLC Name for GP-PRO/PBIII for Windows Ver.7.0 | Device/PLC Name for GP-Pro EX |
|---------------------------------|--|--------------------------------------|
| Pro-face | Memory Link SIO Type | Memory Link |
| | Memory Link Ethernet Type | |
| Mitsubishi Electric Corporation | mitsubishi MELSEC-AnN (LINK) | A Series Computer Link |
| | mitsubishi MELSEC-AnN (CPU) | A Series CPU Direct |
| | mitsubishi MELSEC-AnA (LINK) | A Series Computer Link |
| | mitsubishi MELSEC-AnA (CPU) | A Series CPU Direct |
| | mitsubishi MELSEC-A (JPCN1) | Not converted |
| | mitsubishi MELSEC-A (ETHER) | A Series Ethernet |
| | mitsubishi MELSEC-F2 SERIES | Not converted |
| | mitsubishi MELSEC-FX (CPU) | FX Series CPU Direct |
| | mitsubishi MELSEC-FX 2 (LINK) | FX Series Computer Link |
| | mitsubishi MELSEC-FX (CPU2) | FX Series CPU Direct |
| | mitsubishi MELSEC-FX 1:n Comm. | FX Series Computer Link |
| | mitsubishi MELSEC-QnA (LINK) | Q/QnA Serial Communication |
| | mitsubishi MELSEC-QnA (CPU) | QnA Series CPU Direct |
| | mitsubishi MELSEC-Q (CPU) | Q Series CPU Direct |
| | mitsubishi MELSEC-QUTE (CPU) | QUTE Series Direct Connection to CPU |
| | mitsubishi MELSEC-Q (ETHER) | Q/QnA Series Ethernet |
| | Omron Corporation | OMRON SYSMAC-C SERIES |
| OMRON SYSMAC-C 1:n Comm. | | |
| OMRON SYSMAC-CV SERIES | | |
| OMRON SYSMAC-CS1 SERIES | | CS/CJ Series HOST Link |
| OMRON SYSMAC-CS1 (ETHER) | | CS/CJ Series Ethernet |
| Sharp Corporation | OMRON THERMAC NEO Series | ControllerCompoWay/F |
| | SHARP New Satellite JW SERIES | JW Series Computer Link |
| Yokogawa Electric Corporation | YOKOGAWA FACTORY ACE 1:1 Comm. | Personal Computer Link SIO |
| | YOKOGAWA FACTORY ACE 1:n Comm. | |
| | YOKOGAWA FA-M3 (ETHER) | Personal Computer Link Ethernet |
| | YOKOGAWA FCN/FCJ Modbus RTU 1:n | Not converted |

Continued

| Maker | Device/PLC Name for GP-PRO/PBIII for Windows Ver.7.0 | Device/PLC Name for GP-Pro EX | |
|--|--|-------------------------------|-----------------------------|
| Fuji Electric Corporation | FUJI MICREX-F SERIES | MICREX-F Series SIO | |
| | FUJI MICREX-F SERIES (T-Link) | Not converted | |
| | FUJI MICREX-F SERIES (FLT) | | |
| | FUJI FLEX-PC (LINK) | | |
| | FUJI FLEX-PC (CPU) | | |
| | FUJI MICREX-SX SERIES | | |
| | FUJI Inverter | | |
| Toyoda Machine Works, Ltd. | TEMPERATURE PXR | TOYOPUC CMP-LINK SIO | |
| | TOYODA TOYOPUC-PC2 SERIES | | |
| | TOYODA TOYOPUC-PC2 1:n Comm. | | |
| | TOYODA TOYOPUC-PC3J SERIES | | |
| Yasukawa Electric Corporation | TOYODA TOYOPUC-PC3J 1:n Comm. | Not converted | |
| | YASKAWA Memocon-SC SERIES | | |
| | YASKAWA GL120/130 SERIES | | |
| | YASKAWA PROGIC8 SERIES | MEMOBUS SIO | |
| | YASKAWA MP2000/MP900/CP9200SH | MEMOBUS Ethernet | |
| | YASKAWA MP2000/MP920 (ETHER) | Not converted | |
| | YASKAWA Inverter | | |
| YASKAWA MP Panel SERIES | | | |
| HITACHI HIDIC-S10 a SERIES | | | |
| Hitachi Ltd. | HITACHI HIDIC-S10 a (JPCN/1) | Not converted | |
| | HITACHI HIZAC-EC SERIES | | |
| | HITACHI S10V SERIES (ETHER) | | |
| | HITACHI IES HIDIC-H SERIES | | HIDIC H SIO |
| Hitachi Industrial Equipment Systems Co., Ltd. | HITACHI IES HIDIC-H SERIES2 | Not converted | |
| | HITACHI IES HIDIC H (ETHER) | HIDIC HSERIES Ethernet | |
| | HITACHI IES SJ300/L300P SERIES | Not converted | |
| | TOSHIBA PROSEC-EX2000 SERIES | | |
| TOSHIBA PROSEC-T SERIES | | | |
| Toshiba Corporation | TOSHIBA PROSEC-T (ETHER) | Not converted | |
| | MATSUSHITA Electric Works MEWNET-FP SERIES | | FP Series Computer Link SIO |
| Koyo Electronics Industries Co., Ltd. | KOYO ELECTRONICS KOSTAC-SG8 SERIES | Not converted | |
| | KOYO ELECTRONICS KOSTAC-SR21/22 SERIES | | |
| | KOYO ELECTRONICS DL205/405 SERIES | | |
| | KOYO ELECTRONICS DL305 SERIES | | |
| Toshiba Machine Co., Ltd. | TOSHIBA MACHINE TC200 SERIES | | Not converted |
| | TOSHIBA MACHINE TC200-S SERIES | | |
| GE FANUC Automation Corporation | GE Fanuc SERIES 90 SNP-X | Series 90-30/70 SNP-X | |
| | GE Fanuc SERIES 90-30/70 SNP | Series 90-30/70 SNP | |
| | GE Fanuc SERIES 90-30/70 (ETHER) | Series90 Ethernet | |

Continued

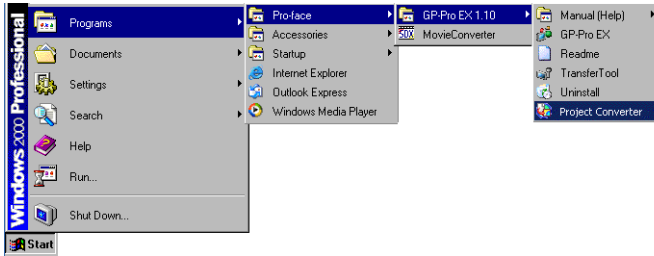
| Maker | Device/PLC Name for GP-PRO/PBIII for Windows Ver.7.0 | Device/PLC Name for GP-Pro EX |
|--|--|--------------------------------------|
| FANUC Ltd. | FANUC Power Mate SERIES | Not converted |
| IDEC IZUMI Corporation | IDEC IZUMI IDEC_1 | |
| | IDEC IZUMI IDEC_2 | |
| | IDEC IZUMI IDEC_3 | |
| | IDEC IZUMI MICRO3 | |
| SIEMENS | IDEC IZUMI FC3/FC4A Series | |
| | SIEMENS S5 90-115 SERIES | |
| | SIEMENS S5 135-155 SERIES | |
| | SIEMENS S5 3964 (R) Protocol | |
| | SIEMENS S7 200 PPI | |
| | SIEMENS S7 200 via MPI | |
| | SIEMENS S7 300/400 via MPI | SIMATIC S7 3964(R)/RK512 |
| | SIMATIC S7 via 3964/RK512 | SIMATIC S7 Ethernet/TCP |
| SIEMENS S7 via 300/400 Ethernet | Not converted | |
| SIMATIC 545/555 CPU | | |
| Rockwell (Allen-Bradley) | Allen Bradley PLC-5 | DF1 |
| | Allen Bradley SLC5/03, SLC5/04 | |
| | Allen Bradley Control Logix DF1 | |
| | AB PLC-5 DataHighway+ | Not converted |
| | AB SLC500 DH485 | DH-485 |
| | AB Remote I/O | Not converted |
| | Allen Bradley SLC505 Ethernet | EtherNet/IP |
| Allen Bradley Control Logix Ethernet | | |
| Keyence | KEYENCE KZ-300 SERIES | Not converted |
| | KEYENCE KZ-A500 SERIES (CPU) | |
| | KEYENCE KZ-A500 SERIES | |
| | KEYENCE KV-10/16/24/40 SERIES | |
| | KEYENCE KV-10_80RW SERIES | |
| | KEYENCE KV-700 SERIES (CPU) | KV-700/1000 Series CPU Direct |
| Shinko Electric Co. Ltd. | SHINKO ELECTRIC SELMART SERIES | Not converted |
| Matsushita Electric Industrial Co., Ltd. | Matsushita Electric Industrial Panadac-7000 Series | |
| | Matsushita Electric Industrial MINAS-A/S Series | |
| Modicon Corp. | Modicon Modbus Master | Schneider Electric MODBUS SIO Master |
| | Modicon Modbus (Slave) | Not converted |
| | Modicon Modbus (Plus) | |
| FATEK | FATEK FACON FB | |
| Orimvexta Co., Ltd | E1 SERIES | |
| PROFIBUS | PROFIBUS-DP | PROFIBUS DP Slave |
| Device Net | Device Net Slave I/O | Not converted |
| INTERBUS | INTERBUS-SLAVE | |
| JPCN/I | JPCN/I (Standard) | |
| Yamatake Corporation | Yamatake Temperature Controller SDC Series | Digital ControlerSIO |
| RKC Instrument Inc. | RKC INSTRUMENT CB/SR-Mini SERIES (MODBUS) | Controller MODBUS SIO |
| | RKC INSTRUMENT CB/REX-F/LE100 SERIES (RKC) | Ontroller RKC SIO |

Continued

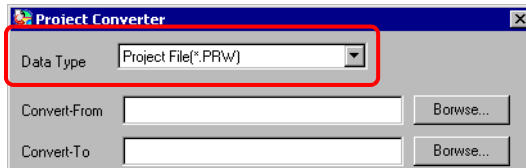
| Maker | Device/PLC Name for GP-PRO/PBIII for Windows Ver.7.0 | Device/PLC Name for GP-Pro EX |
|--|--|-------------------------------|
| Shinko Technos Co., Ltd. | Shinko Technos Controller | Not converted |
| TOHO Electronics Co., Ltd. | Controller TTM Series | |
| FENWAL CONTROLS OF JAPAN, LTD. | Fenwal AL Series | |
| JT Engineering Inc. | JTE Analyzer | |
| Meidensha Corporation | MEIDENSHA (ETHERNET) | |
| Shimaden Co., Ltd. | SHIMADEN Control Device | |
| CHINO Corporation | CHINO Controller (MODBUS) | |
| Schneider Electric | Schneider TSX via Uni-Telway | Uni-Telway |
| | Schneider Modbus RTU 1:n | MODBUS SIO Master |
| | Schneider Modbus Ethernet | MODBUS TCP Master |
| Toshiba Schneider Inverter Corporation | Toshiba Schneider Inverter | Not converted |
| Ubon | UbonUPZ Series | |
| HIOKI E.E. Corporation | HIOKI E.E. Smart Site (MODBUS TCP) | |

2.1.4 How to operate Project Converter

- 1 Click the [Start] button, select the [Programs] (“All Programs” on Windows® XP) menu - [Pro-face] option - [GP-Pro EX 1.10] command, and click the [Project Converter].

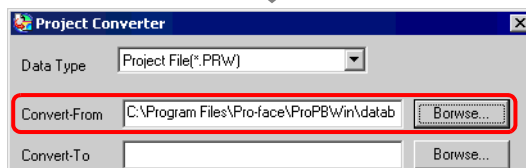
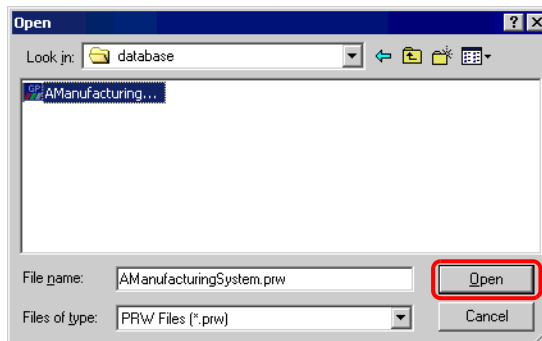
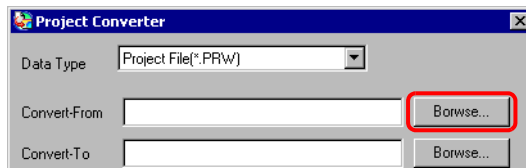



- 2 Project Converter starts up and the [Project Converter] dialog box opens. Select [Project File (*.PRW)] in the [Data Type].

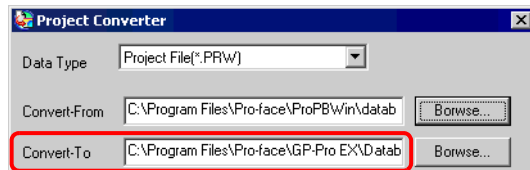
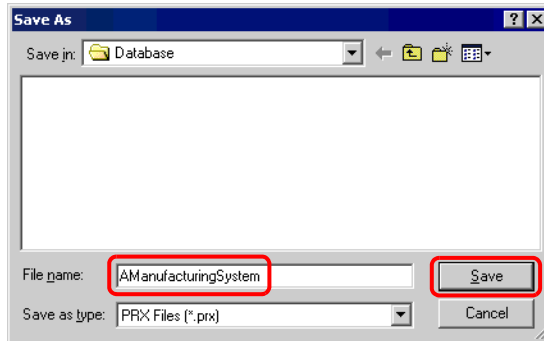
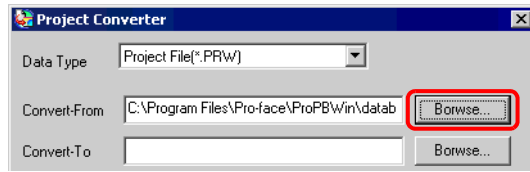


NOTE • To convert the files in the [Pro-Control Editor], select the [Logic File (*.wll)]. To convert partial program files (*.wlp) or sub-routine program files (*.wlf), you need to save the files in Project File format with GP-PRO/PBIII first.

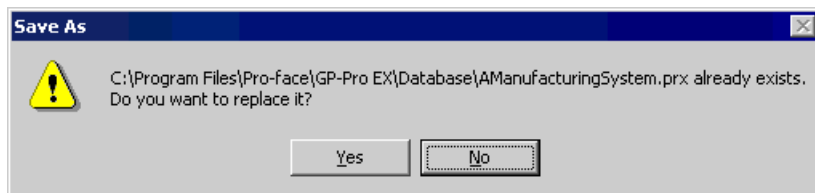
- 3 Designate a GP-PRO/PBIII for Windows’ project file (*.prw) in [Convert-From]. Click the [Browse] button, select a project file (e.g.:“A Manufacturing System.prw”), and click [Open]. The file is set to [Convert-From].

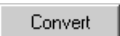


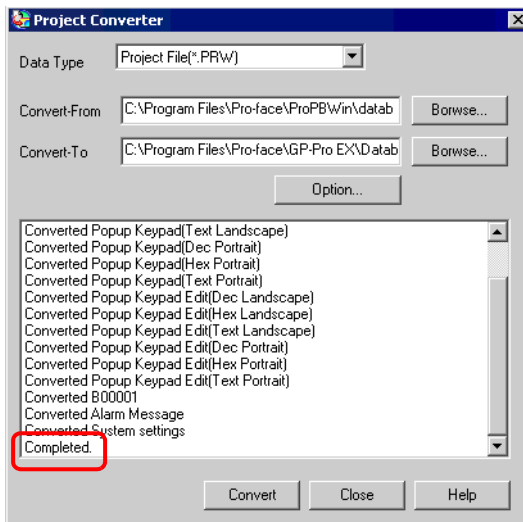
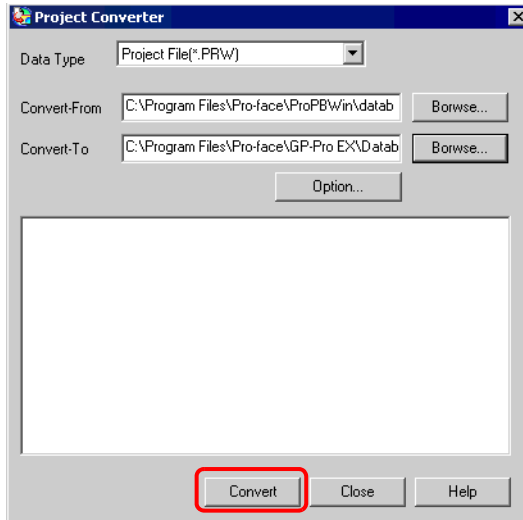
4 In [Convert-To], designate a GP-Pro EX's project file (*.prx). Click the [Browse] button, input a new [File name] (e.g.: "A Manufacturing System.prx"), and click . A new project file name is set to [Convert-To].



NOTE • When a convert-to file exists, the window that confirms whether or not to overwrite the file is displayed.

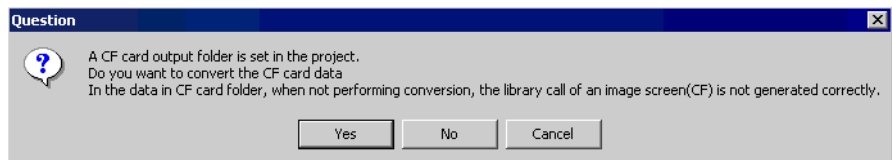



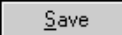

5 Click  and start the conversion.

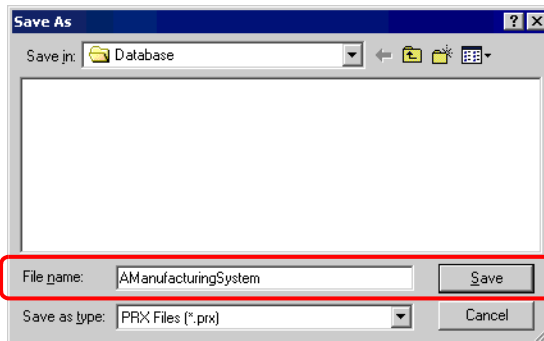


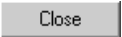
NOTE • When the following dialog box is displayed, you need to set the CF-card output folder.

☞ “ ■ Converting GP-PRO/PBIII for Windows' “CF-Card Data Destination Folder”” (page 2-12)



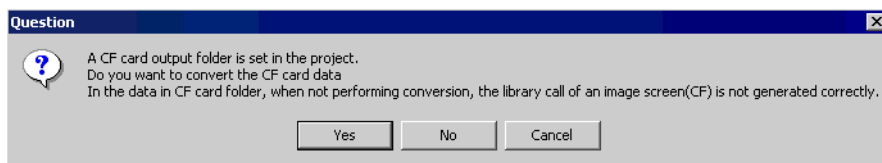
6 After conversion, the [Save Convert information] dialog box is displayed. If you click , you can save the conversion information in a text file. In this case, input a [File name] and click . If you click , you return to the [Project Converter] dialog box without saving the conversion information.



7 Click  to close the [Project Converter] dialog box.

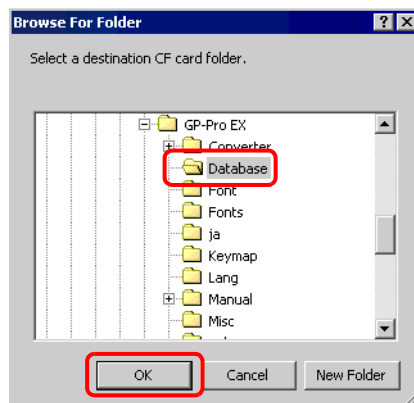
■ Converting GP-PRO/PBIII for Windows’ “CF-Card Data Destination Folder”

When converting a project file (*.prw) with the CF-Card Data Destination Folder designated in Step 5, the question of whether or not to designate the CF-Card Data Destination Folder for the conversion destination is displayed as well.



Select a folder (e.g.: “Database”) and click [OK].

If you click the [New Folder] button, you can create a reference folder at any place.



IMPORTANT

- In the [Question] dialog box, be sure to select “Yes” and designate a convert-to folder. If you select “No” called images are not properly displayed.

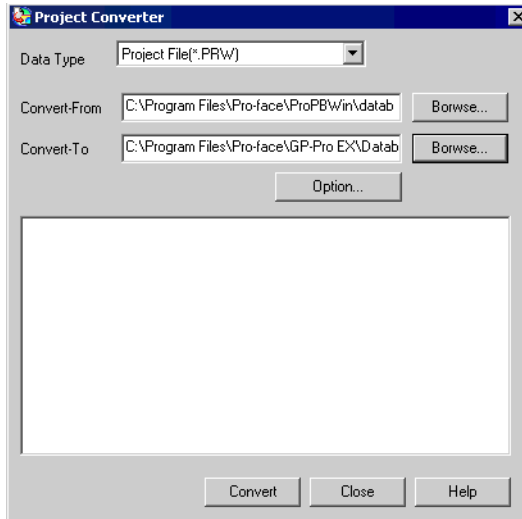
2.1.5 Setting up the Project Converter

Convert the files created with GP-PRO/PBIII for Windows or Pro-Control Editor to the project files for the GP-Pro EX.

IMPORTANT

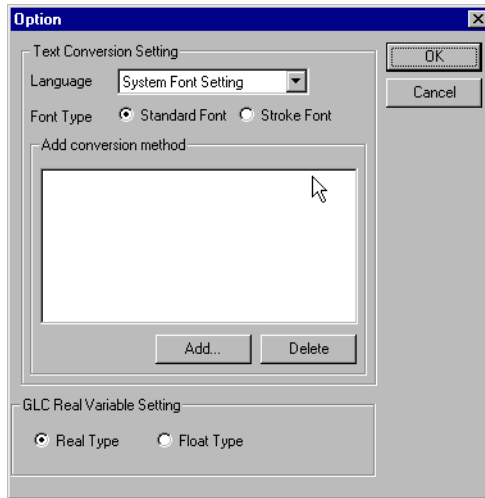
- You cannot convert data created with GP-Pro EX to the files for GP-PRO/PBIII for Windows or Pro-Control Editor.

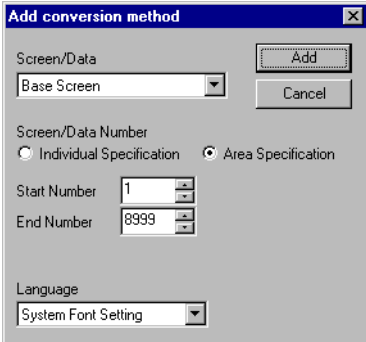
■ Project Converter



| Setting | Description |
|------------------------|---|
| Type before Conversion | Select a type of file for conversion from [Project File], [Parts File], [CF-Card Data], or [Logic File]. |
| Convert-From | Click the [Reference] and select a file for conversion. NOTE <ul style="list-style-type: none"> If [CF-Card Data] is selected in the [Type before Conversion], you need to set up the CF-card output folder. ☞ “ ■ Converting GP-PRO/PBIII for Windows’ “CF-Card Data Destination Folder”” (page 2-12) |
| Convert-To | Please click the [Reference] and specify the location to save and the file name. NOTE <ul style="list-style-type: none"> If [CF-Card Data] is selected in the [Type before Conversion], you need to set up the CF-card output folder. ☞ “ ■ Converting GP-PRO/PBIII for Windows’ “CF-Card Data Destination Folder”” (page 2-12) |
| Option | This opens the [Option Settings] dialog box. ☞ “ ◆ Options” (page 2-14) |

◆ Options



| Setting | Description |
|----------------------------------|--|
| Text Conversion Setting | Set up the screens and data for conversion individually. |
| Language | Select the base language for conversion from [System Font Setting], [Western], [Korean], [Chinese (Traditional)], [Chinese (Simplified)], [Japanese]. |
| Font Type | Select the [Standard Font] or the [Stroke Font]. |
| Add conversion method | <p>Click [Add] to display the [Add conversion method] dialog box.</p>  <p>NOTE</p> <ul style="list-style-type: none"> • If you want to delete the settings, select the item line from the list of [Add conversion method] and click [Delete]. |
| Screen/Data | Select a screen or data to convert from [Base Screen], [Mark Screen], [Line Graph Screen], [Keypad Screen], [Text Screen], [Window], [Image Screen], [Sound], [Global D-Script], [Extention SIO Script], [D-Script Function], [Data Sampling], [Filing Data], [Log Settings], [CSV Data Transfer Feature], [Alarm Message/Summary], [Bit Log Alarm], [Word Log Alarm], [Logic Data]. |
| Screen/Data Number | <ul style="list-style-type: none"> • Specify Individual Specify the number of the screen or data you want to convert. • Specify Range Specify the [Start No.] and the [End No.] of the screen or data you want to convert from 1 to 8999. |
| Language | Select from [System Font Setting], [Western], [Korean], [Chinese (Traditional)], [Chinese (Simplified)], and [Japanese]. |
| GLC Function Conversion Settings | Select [Real Type] or [Float Type]. |

2.1.6 Error Messages

The error messages displayed during Project Converter operation and the causes and solutions are as follows.

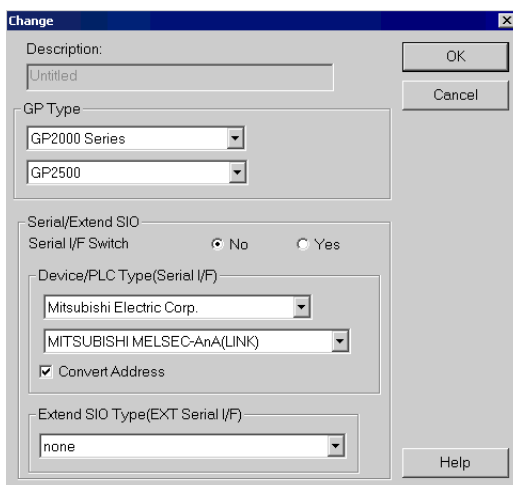
The selected Device/PLC is unavailable for conversion. Change the Device/PLC before conversion.

A device/PLC type which is not supported by GP-Pro EX is selected. In GP-PRO/PBIII for Windows, change the device/PLC to a device/PLC supported by GP-Pro EX and then execute Project Converter again. For devices supported by GP-Pro EX, refer to “2.1.3 List of Devices before and after the Conversion” (page 2-5)

- How to change [Device/PLC Type] in GP-PRO/PBIII for Windows
 - (1) Select the [Device/PLC Type] icon in GP-PRO/PBIII for Windows' Project Manager.



- (2) The [Change] dialog box is displayed. Select a [Device/PLC Type] you want to change to. Always confirm the device address settings after changing a [Device/PLC Type].



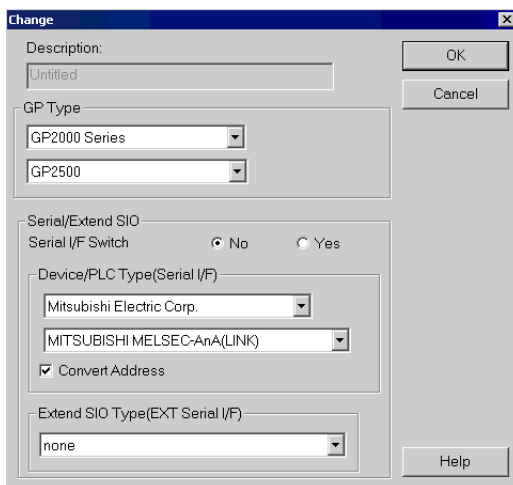
Cannot read the source Device/PLC file.

Cannot recognize the convert-from device model. In GP-PRO/PBIII for Windows, change it to a device type supported by GP-Pro EX and then execute Project Converter again. For supported devices, refer to “2.1.3 List of Devices before and after the Conversion” (page 2-5) .

- How to change [Device/PLC Type] in GP-PRO/PBIII for Windows
- (1) Select the [Device/PLC Type] icon in GP-PRO/PBIII for Windows' Project Manager.



- (2) The [Change] dialog box is displayed. Select a [Device/PLC Type] you want to change to. Always confirm the device address settings after changing a [Device/PLC Type].



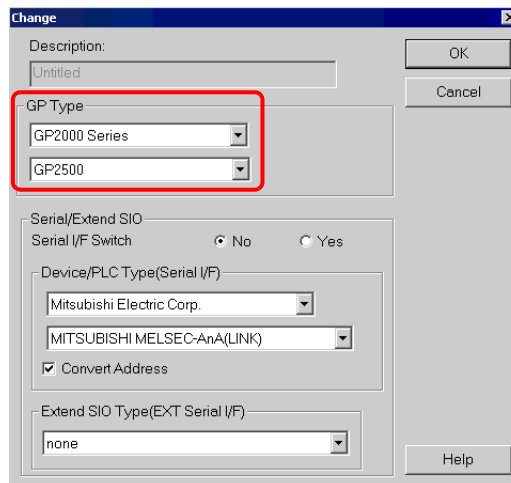
The selected model is unavailable for conversion. Change the model.

A display type which is not supported by GP-Pro EX is selected. In GP-PRO/PBIII for Windows, change the display type to a GP type supported by GP-Pro EX and then execute Project Converter again. For supported models, refer to “2.1.2 List of GP Models before and after the Conversion” (page 2-2) .

- How to change [GP Type] in GP-PRO/PBIII for Windows
- (1) Select the [GP Type] icon in GP-PRO/PBIII for Windows’ Project Manager.



- (2) The [Change] dialog box is displayed. Select a [GP Type] you want to change to. Be aware that the GP may have different features before and after conversion.



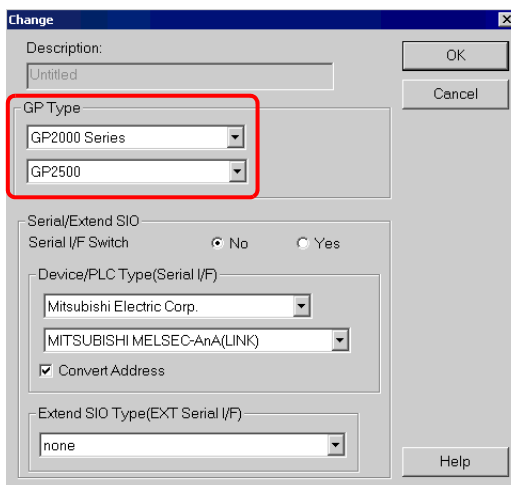
Cannot read the model information file.

Cannot recognize the convert-from GP model. In GP-PRO/PBIII for Windows, change the display type to a GP type supported by GP-Pro EX and then execute Project Converter again. For supported models, refer to “2.1.2 List of GP Models before and after the Conversion” (page 2-2) .

- How to change [GP Type] in GP-PRO/PBIII for Windows
- (1) Select the [GP Type] icon in GP-PRO/PBIII for Windows’ Project Manager.



- (2) The [Change] dialog box is displayed. Select a [GP Type] you want to change to. Be aware that the GP may have different features before and after conversion.



Cannot read AGPCnv.cfg file.

Failed to load GP-Pro EX’s AGPCnv.cfg file. Install GP-Pro EX again.

Cannot read the prw file.

Failed to read a GP-PRO/PBIII for Windows file (*.prw). Microsoft Windows access authority may be set to the GP-PRO/PBIII for Windows file (*.prw). Check the file properties in Explorer and check the access authority settings.

Cannot access the parts file.

Failed to read a GP-PRO/PBIII for Windows’ Part file (*.PDB or *.BPD). Microsoft Windows access authority may be set to the GP-PRO/PBIII for Windows’ Part file (*.PDB or *.BPD). Check the file properties in Explorer and check the access authority settings.

Invalid extension.

An incorrect extension is designated in Project Converter’s [Convert To]. Input a correct extension (*.prx).

2.2 How to Update Software

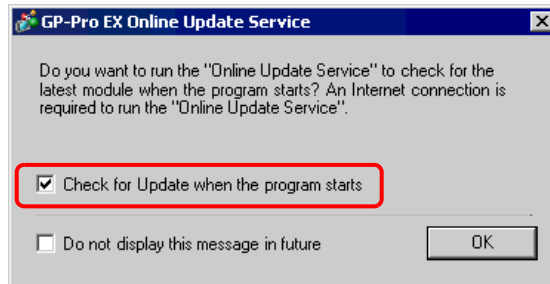
This section explains how to update GP-Pro EX. Apart from software, there are also update programs for manuals and drivers.

- NOTE**
- For GP-Pro EX updates, use the online update function. An Internet connection is required.
 - Please understand that contents of the published screens in this operation procedure will update with no advance notice.

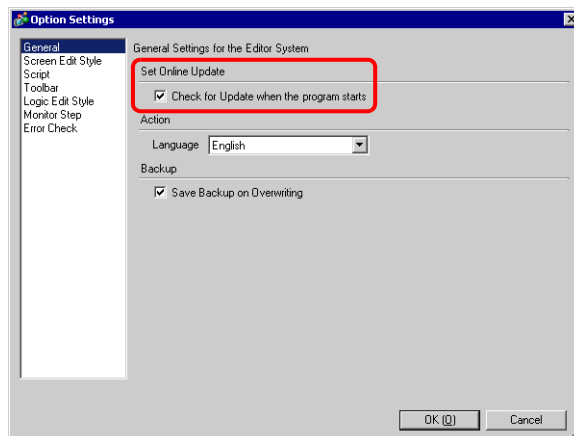
2.2.1 Working with Online Update

1 Select the [Help (H)] menu - [Confirm Update of GP-Pro EX] command.

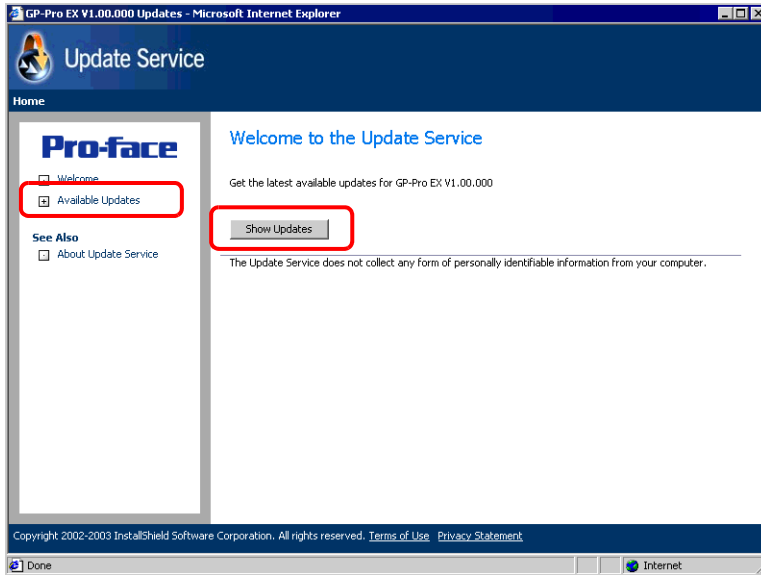
- NOTE**
- When you startup GP-Pro EX, the following type of dialog box appears. To automatically start the online update function every time you start GP-Pro EX, beginning with the next time, leave the check mark next to [Check for Update when the program starts] and click [OK]. If you want to occasionally confirm if there is a necessary update, remove the check mark and click [OK].



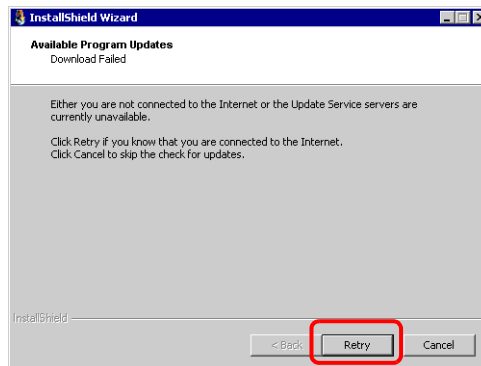
The settings for starting the online update function when GP-Pro EX starts are normally as follows. From [View (V)], select [Option Settings (O)] command - [General]. Put a check mark next to the [Check for Update when the program starts] option and click [OK].



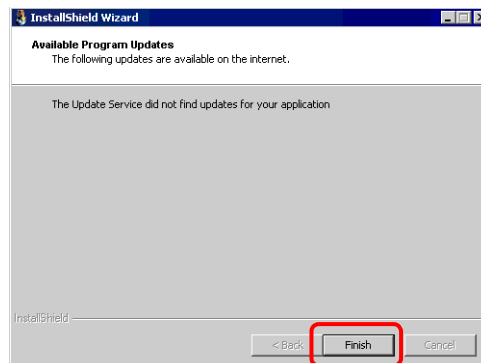
- 2 Search for whether or not there are any necessary program updates via the Internet on the computer you are using. (The [InstallShield Wizard] dialog box will appear while searching.) When the [Welcome to the Update Service] screen appears, click the [Available Updates] or [Show Updates] button.

**NOTE**

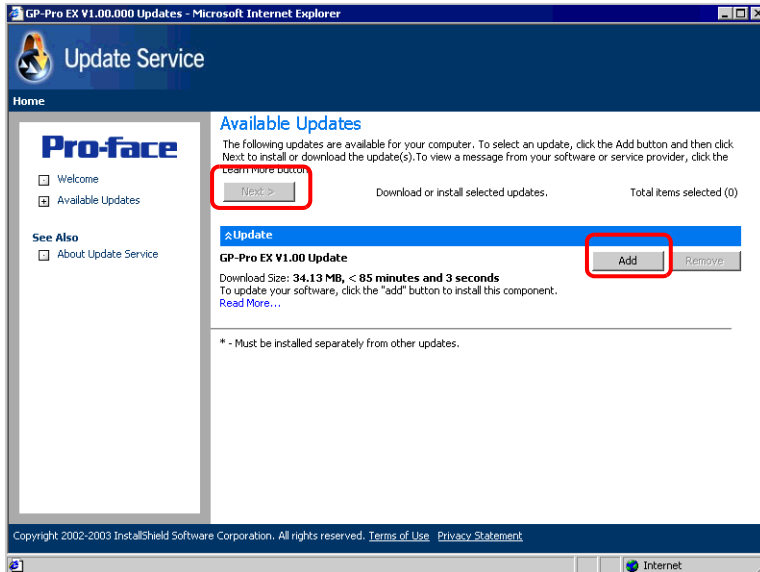
- If you do not have an Internet connection, the following error will occur. Once you are connected, click the [Retry] button. The GP-Pro EX startup time search will not be displayed.



- After searching, if there are no program updates, the following dialog box will appear. Click the [Finish] button to finish. The GP-Pro EX startup time search will not be displayed.

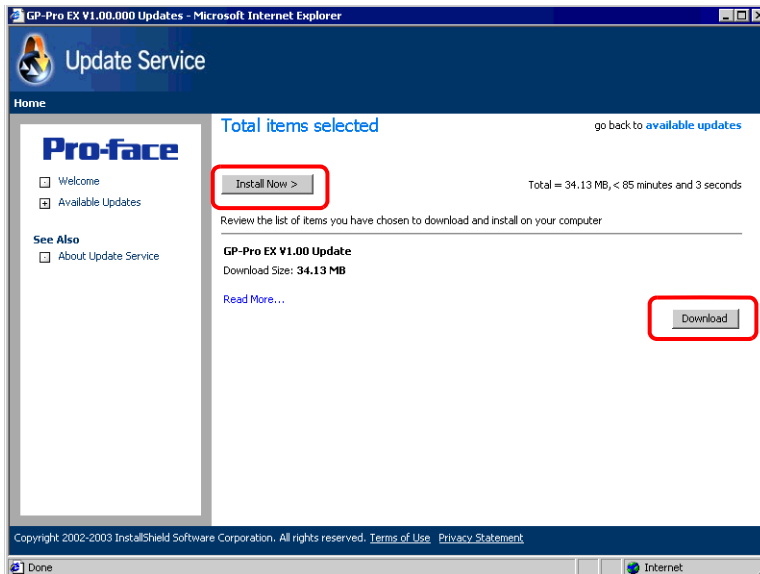


- 3 When the [Available Updates] screen appears, you can confirm the program updates. Select the items you want update with the [Add] button, and click the [Next] button.

**NOTE**

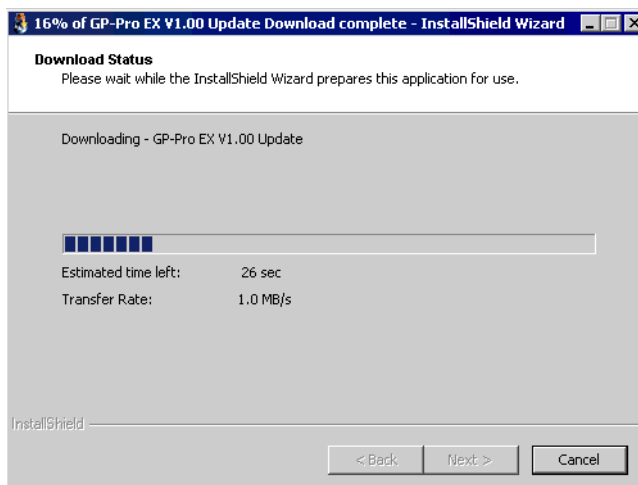
- You can click the button **Update** to make sure the program is up to date. If there is an arrow pointing down, click the arrow to expand the selection.
- The previous [Available Updates] screen's update item is an example. You can confirm the latest program updates on your computer.

- 4 The [Total items selected] screen will appear. You can either automatically install all selected items, or install items separately.



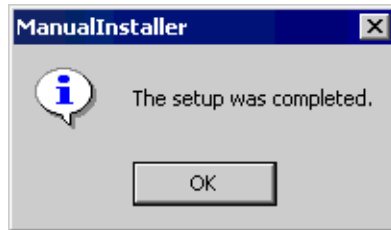
NOTE • Please close all GP-Pro EX project files before installing.

- Click the [Install Now >] button
Automatically starts the installation of all selected program updates. After all program updates are finished downloading, click [Update] and the install begins. Please follow the wizard's instructions.
To cancel the installation, click the [Cancel] button.



- Click the [Download] button
Individually starts the installation of selected program updates. Click the [Download] button, select a save location for the program updates, and click the [Save] button. Next, click the [Finish] button to complete the wizard. Double-click the saved program updates (*.exe) and the installation will automatically begin.

- 5 The installation of product updates for the software is now complete.
When the installation of the manual's product updates completes, the message [The setup was completed.] will appear, so click [OK] to finish.



Memo