

2



Using GP-Pro EX

This chapter explains about “Compatibility Information”, which is necessary to convert Digital’s GP-PRO/PBIII for Windows’ project files into GP-Pro EX’s files, “Project Converter Operation Method”, and the update method for the software and manuals.

2.1	Compatibility with the Pro-face® Software.....	2-2
2.2	How to Update Software	2-18

2.1 Compatibility with the Pro-face® Software

This section explains about compatibility information, which is necessary to convert project files (*.prw) created in Digital's GP-PRO/PBIII for Windows into GP-Pro EX's project files (*.prx), and the project converter operation method.

IMPORTANT

- For information on compatibility between GP-PRO/PBIII for Windows and GP-Pro EX and restrictions, also refer to GP-Pro EX Support Site "Otasuke Pro!".

URL <http://www.pro-face.com/otasuke/> 

2.1.1 Convertible Software Versions

Converts project files (*.prw) created by GP-PRO/PBIII for Windows software Ver.1.0 to Ver.7.0 and the accompanying data set.

IMPORTANT

- Project files (*.prw) created by GP-PRO/PBIII for Windows Ver.7.1 and Ver.7.2 are converted except the features added to each software version.
-

2.1.2 GP Model Names Before Conversion and After Conversion

After conversion, [GP Type] (indicated Model Name) on a project file (*.prw) created by GP-PRO/PBIII for Windows is changed to [Display Type], and the model name is also changed. Supported models are GP70/77R/2000 Series and ST400 Series.

IMPORTANT

- ST403/GLC/LT/Factory Gateway is not supported.
 - For project files created by GP-PRO, GP-PROII, GP-PROIII, GP-PRO/PBIII (DOS), and Parts Box, convert the screen data into *.prw in GP-PRO/PBIII for Windows and then execute the GP-Pro EX's project converter.
- ☞ GP-PRO/PBIII for Windows Operation Manual "Chapter 12 Using Conventional Data"

■ GP77/77R Series

		Convert From		Convert To		
Series Name	Type	GP Type	Display Type			
GP70 Series	GP-H70 Series	GPH70-LG11-24V	GPH70L	AGP3301L* ¹		
		GPH70-LG41-24VP				
		GPH70-SC11-24V	GPH70S			
		GPH70-SC41-24VP				
	GP-270 Series	GP270-LG11-24V	GP270L	AGP3301L		
		GP270-LG21-24VP				
		GP270-LG31-24V				
		GP270-SC11-24V				
		GP270-SC21-24VP	GP270S			
		GP270-SC31-24V				
		GP370-LG11-24V			GP370L	
		GP370-LG21-24VP				
	GP370-LG31-24V					
	GP370-LG41-24VP					
	GP-370 Series	GP370-SC11-24V	GP370S	AGP3301S		
		GP370-SC21-24VP				
		GP370-SC31-24V				
		GP370-SC41-24VP				
		GP-470 Series	GP470-EG11		GP470	AGP3500T* ²
			GP470-EG21-24VP			
			GP470-EG31-24V			
		GP-570 Series	GP570-SC11		GP570	AGP3500T
	GP570-SC21-24VP					
	GP570-SC31-24V					
	GP570-TC11					
	GP570-TC21-24VP					
	GP570-TC31-24V					
	GP57J-SC11					
	GP570-TV11	GP570VM	AGP3500T* ³			
	GP-571 Series	GP571-TC11	GP571T	AGP3500T		
GP-675 Series	GP675-SC11	GP675	AGP3600T			
	GP675-TC11					
	GP675-TC41-24VP					
GP-870 Series	GP870-PV11	GP870VM	AGP3500T* ³			
GP-377 Series	GP377-LG11-24V	GP377L	AGP3300L			
	GP377-LG41-24V					
	GP377-SC11-24V	GP377S				
	GP377-SC41-24V					

Continued

GP77R Series	GP-377R Series	GP377R-TC11-24V	GP377R	AGP3300T
		GP377R-TC41-24V		
	GP-477R Series	GP477R-EG11	GP477R	AGP3500T
		GP477R-EG41-24VP		
	GP-577R Series	GP577R-SC11	GP577R	
		GP577R-SC41-24VP		
		GP577R-TC11		
GP577R-TC41-24VP				

1 After conversion, handy type GP (.prw) is changed to project files for normal type GP (*.prx). Therefore Operation Switch and Function Switch's settings are not converted.

*2 After conversion, this type is changed to the Display Type with the Display No. of Dots 640 × 480 (VGA).

*3 The video window display feature (V-tag) and video window display extended feature (v-tag) are not converted.

■ GP2000 Series

Convert From			Convert To	
Series Name	Type	GP Type	Display Type	
GP2000 Series	GP2000H Series	GP2301H-LG41-24V	GP2301HL	AGP3301L
		GP2301H-SC41-24V	GP2301HS	AGP3301S
	GP-2401H Series	GP2401H-TC41-24V	GP2401H	AGP3400S
	GP-2300 Series	GP2300-LG41-24V	GP2300L	AGP3300L
		GP2300-TC41-24V	GP2300	AGP3300T
	GP-2301 Series	GP2301-LG41-24V	GP2301L	AGP3301L
		GP2301-SC41-24V	GP2301S	AGP3301S
		GP2301-TC41-24V	GP2301	AGP3301S
	GP-2400 Series	GP2400-TC41-24V	GP2400	AGP3400T
	GP-2401 Series	GP2401-TC41-24V	GP2401	AGP3400S
	GP-2500 Series	GP2500-TC11	GP2500	AGP3500T ^{*3}
		GP2500-TC41-24V		
	GP-2501 Series	GP2501-SC11	GP2501S	AGP3500S
		GP2501-TC11	GP2501	AGP3500T
	GP-2600 Series	GP2600-TC11	GP2600	AGP3600T ^{*3}
		GP2600-TC41-24V		
GP-2601 Series	GP2601-TC11	GP2601	AGP3600T	

1 After conversion, handy type GP (.prw) is changed to project files for normal type GP (*.prx). Therefore Operation Switch and Function Switch's settings are not converted.

*2 You cannot change the GP2000H series-only vibration function.

*3 The video window display feature (V-tag) and video window display extended feature (v-tag) are not converted.

■ ST400 Series

Convert From			Convert To	
Series Name	Type	GP Type	Display Type	
ST400 Series	ST400	ST400-AG41-24V	ST400	AGP3302B ^{*1}
	ST401	ST401-AG41-24V	ST401	
	ST402	ST402-AG41-24V	ST402	
	ST403	ST403-AG41-24V	ST403	Not converted

*1 The Function Key's settings for ST400 Series are not converted.

2.1.3 Device/PLC Name Before Conversion and After Conversion

After conversion, [Device/PLC Type] on a project file (*.prw) created by GP-PRO/PBIII for Windows is changed to another name. Some devices/PLCs are not converted.

IMPORTANT

- After conversion, the name of GP Type is also changed.
- ☞ “2.1.2 GP Model Names Before Conversion and After Conversion” (page 2-3)
- For project files created by GP-PRO, GP-PROII, GP-PROIII, GP-PRO/PBIII (DOS), and Parts Box, convert the screen data into *.prw in GP-PRO/PBIII for Windows and then execute the GP-Pro EX’s project converter.
- ☞ GP-PRO/PBIII for Windows Operation Manual “Chapter 12 Using Conventional Data”

Maker	Device/PLC Name for GP-PRO/PBIII for Windows Ver.7.0	Device/PLC Name for GP-Pro EX
Digital Electronics Corporation	Memory Link SIO Type	Memory Link
	Memory Link Ethernet Type	Memory Link
Mitsubishi Electric Corporation	MITSUBISHI MELSEC-AnN (LINK)	A Series Computer Link
	MITSUBISHI MELSEC-AnN (CPU)	A Series CPU Direct
	MITSUBISHI MELSEC-AnA (LINK)	A Series Computer Link
	MITSUBISHI MELSEC-AnA (CPU)	A Series CPU Direct
	MITSUBISHI MELSEC-A (JPCN1)	Not converted
	MITSUBISHI MELSEC-A (ETHER)	A Series Ethernet
	MITSUBISHI MELSEC-F2 SERIES	Not converted
	MITSUBISHI MELSEC-FX (CPU)	FX Series CPU Direct
	MITSUBISHI MELSEC-FX 2 (LINK)	FX Series Computer Link
	MITSUBISHI MELSEC-FX (CPU2)	FX Series CPU Direct
	MITSUBISHI MELSEC-FX 1:N Comm.	FX Series Computer Link
	MITSUBISHI MELSEC-QnA (LINK)	Q/QnA Serial Communication
	MITSUBISHI MELSEC-QnA (CPU)	QnA Series CPU Direct
	MITSUBISHI MELSEC-Q (CPU)	Q Series CPU Direct
	MITSUBISHI MELSEC-QUTE (CPU)	Not converted
	MITSUBISHI MELSEC-Q (ETHER)	Q/QnA Series Ethernet
	MELSECNET/10	Not converted
	FREQROL SERIES	
CC-Link Type		
CC-Link Intelligent Device		
Omron Corporation	OMRON SYSMAC-C SERIES	C/CV Series HOST Link
	OMRON SYSMAC-C 1:n Comm.	
	OMRON SYSMAC-CV SERIES	
	OMRON SYSMAC-CS1 SERIES	CS/CJ Series HOST Link
	OMRON SYSMAC-CS1 (ETHER)	CS/CJ Series Ethernet
	OMRON THERMAC NEO SERIES	Not converted
Sharp Corporation	SHARP New Satellite JW SERIES	Not converted
Yokogawa Electric Corporation	YOKOGAWA FACTORY ACE 1:1 Comm.	Personal Computer Link SIO
	YOKOGAWA FACTORY ACE 1:n Comm.	
	YOKOGAWA FA-M3 (ETHER)	Personal Computer Link Ethernet
	YOKOGAWA FCN/FCJ Modbus RTU 1:n	Not converted

Continued

Fuji Electric Corporation	FUJI MICREX-F SERIES	MICREX-F Series SIO
	FUJI MICREX-F SERIES (T-Link)	Not converted
	FUJI MICREX-F SERIES (FLT)	
	FUJI FLEX-PC (LINK)	
	FUJI FLEX-PC (CPU)	
	FUJI MICREX-SX SERIES	
	FUJI Inverter	
	TEMPERATURE PXR	
Toyoda Machine Works, Ltd.	TOYODA TOYOPUC-PC2 SERIES	TOYOPUC CMP-LINK SIO
	TOYODA TOYOPUC-PC2 1:n Comm.	
	TOYODA TOYOPUC-PC3J SERIES	
	TOYODA TOYOPUC-PC3J 1:n Comm.	
Yasukawa Electric Corporation	YASKAWA Memocon-SC SERIES	Not converted
	YASKAWA GL120/130 SERIES	
	YASKAWA PROGIC8 SERIES	
	YASKAWA MP2000/MP900/CP9200SH	MEMOBUS SIO
	YASKAWA MP2000/MP920 (ETHER)	Not converted
	YASKAWA Inverter	
	YASKAWA MP Panel SERIES	
Hitachi Ltd.	HITACHI HIDIC-S10 α SERIES	Not converted
	HITACHI HIDIC-S10 α (JPCN/1)	
	HITACHI HIZAC-EC SERIES	
	HITACHI S10V SERIES (ETHER)	
Hitachi Industrial Equipment Systems Co., Ltd.	HITACHI IES HIDIC-H SERIES	
	HITACHI IES HIDIC-H2 SERIES	
	HITACHI IES HIDIC H (ETHER)	
	HITACHI IES SJ300/L300P SERIES	
Toshiba Corporation	TOSHIBA PROSEC-EX2000 SERIES	Not converted
	TOSHIBA PROSEC-T SERIES	
	TOSHIBA PROSEC-T (ETHER)	
Matsushita Electric Works, Ltd.	MATSUSHITA Electric Works MEWNET-FP SERIES	FP Series Computer Link SIO
Koyo Electronics Industries Co., Ltd.	KOYO ELECTRONICS KOSTAC-SG8 SERIES	Not converted
	KOYO ELECTRONICS KOSTAC-SR21/22 SERIES	
	KOYO ELECTRONICS DL205/405 SERIES	
	KOYO ELECTRONICS DL305 SERIES	
Toshiba Machine Co., Ltd.	TOSHIBA MACHINE TC200 SERIES	
	TOSHIBA MACHINE TC200-S SERIES	
GE FANUC Automation Corporation	GE Fanuc SERIES 90 SNP-X	
	90-30/70 SNP	
	GE Fanuc SERIES 90-30/70 (ETHER)	
FANUC Ltd.	FANUC Power Mate SERIES	
IDEC IZUMI Corporation	IDEC IZUMI IDEC_1	
	IDEC IZUMI IDEC_2	
	IDEC IZUMI IDEC_3	
	IDEC IZUMI MICRO3	
	IDEC IZUMI FC3/FC4A SERIES	

Continued

SIEMENS	SIEMENS S5 90-115 SERIES	Not converted
	SIEMENS S5 135-155 SERIES	
	SIEMENS S5 3964 (R) Protocol	
	SIEMENS S7 200 PPI	
	SIEMENS S7 200 via MPI	SIMATIC S7 MPI Direct
	SIEMENS S7 300/400 via MPI	SIMATIC S7 MPI Direct
	SIMATIC S7 via 3964/RK512	SIMATIC S7 3964(R)/RK512
	SIEMENS S7 via 300/400 Ethernet	SIMATIC S7 Ethernet/TCP
	SIMATIC 545/555 CPU	Not converted
Rockwell (Allen-Bradley)	Allen Bradley PLC-5	DF1
	Allen Bradley SLC5/03, SLC5/04	
	Allen Bradley Control Logix DF1	
	AB PLC-5 DataHighway+	Not converted
	AB SLC500 DH485	DH-485
	AB Remote I/O	Not converted
	Allen Bradley SLC505 Ethernet	
	Allen Bradley Control Logix Ethernet	
Allen Bradley Control Logix Ethernet		
Keyence	KEYENCE KZ-300 SERIES	Not converted
	KEYENCE KZ-A500 SERIES (CPU)	
	KEYENCE KZ-A500 SERIES	
	KEYENCE KV-10/16/24/40 SERIES	
	KEYENCE KV-10_80RW SERIES	
	KEYENCE KV-700 SERIES (CPU)	KV-700/1000 Series CPU Direct
Shinko Electric Co. Ltd.	SHINKO ELECTRIC SELMART SERIES	Not converted
Matsushita Electric Industrial Co., Ltd.	Matsushita Electric Industrial Panadac-7000 Series	
	Matsushita Electric Industrial MINAS-A/S Series	
Modicon	Modicon Modbus Master	MODBUS SIO Master
	Modicon Modbus (Slave)	Not converted
	Modicon Modbus (Plus)	
FATEK	FATEK FACON FB	Not converted
Orimvexta Co., Ltd	E1 SERIES	
PROFIBUS	PROFIBUS-DP	PROFIBUS DP Slave

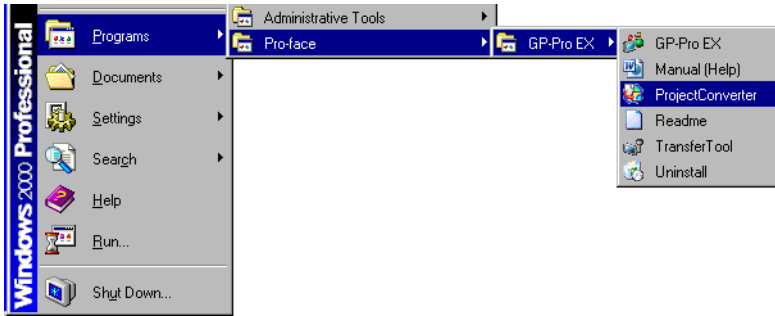
Continued

Compatibility with the Pro-face® Software

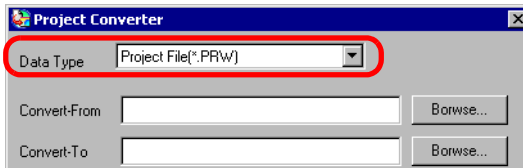
Device Net	Device Net Slave I/O	Not converted
INTERBUS	INTERBUS-SLAVE	
JPCN/1	JPCN/1 (Standard)	
Yamatake Corporation	Yamatake Temperature Controller SDC Series	
RKC Instrument Inc.	RKC INSTRUMENT CB/SR-Mini SERIES (MODBUS)	
	RKC INSTRUMENT CB/REX-F/LE100 SERIES (RKC)	
Shinko Technos Co., Ltd.	Shinko Technos Controller	
TOHO Electronics Co., Ltd.	Controller TTM Series	
FENWAL CONTROLS OF JAPAN, LTD.	Fenwal AL Series	
JT Engineering Inc.	JTE Analyzer	
Meidensha Corporation	MEIDENSHA (ETHERNET)	
Shimaden Co., Ltd.	SHIMADEN Control Device	
CHINO Corporation	CHINO Controller (MODBUS)	
Schneider Electric	Schneider TSX via Uni-Telway	
	Schneider Modbus RTU 1:n	MODBUS SIO Master
	Schneider Modbus Ethernet	MODBUS TCP Master
Toshiba Schneider Inverter Corporation	Toshiba Schneider Inverter	Not converted
Ubon	UbonUPZ Series	
HIOKI E.E. Corporation	HIOKI E.E. Smart Site (MODBUS TCP)	

2.1.4 Project Converter Operation Procedure

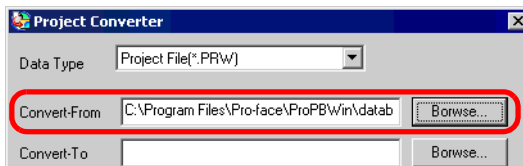
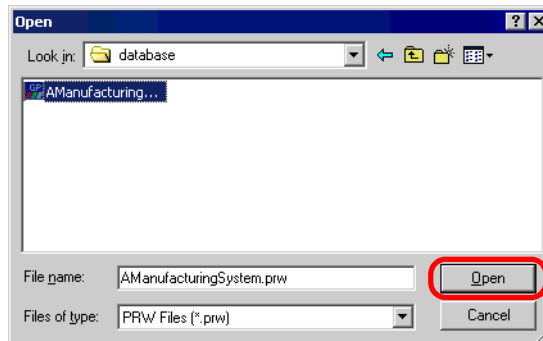
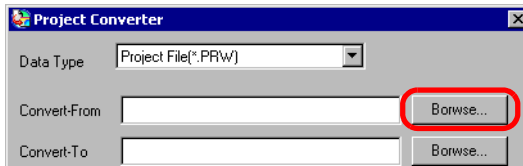
- 1 Click the [Start] button, select the [Programs] (“All Programs (P)” on Windows® XP) menu - [Pro-face] option - [GP-Pro EX] command, and click [Project Converter].



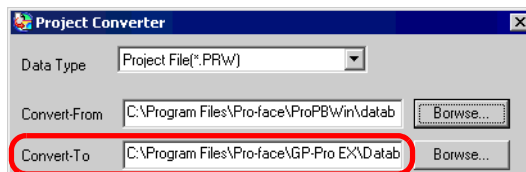
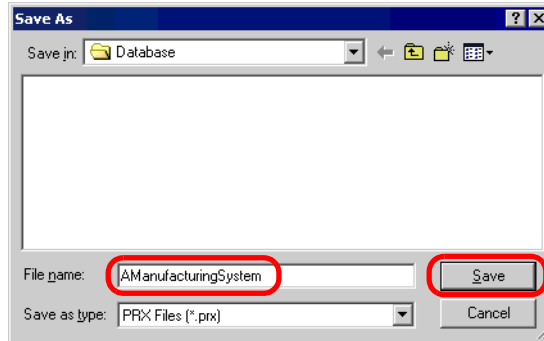
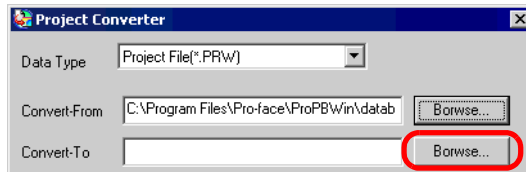
- 2 Project Converter starts up and the [Project Converter] dialog box opens. Select [Project File (*.PRW)] in [Data Type].



- 3 Designate a GP-PRO/PBIII for Windows' project file (*.prw) in [Convert-From]. Click the [Browse] button, select a project file (e.g.:“A Manufacturing System.prw”), and click [Open]. The file is set to [Convert-From].

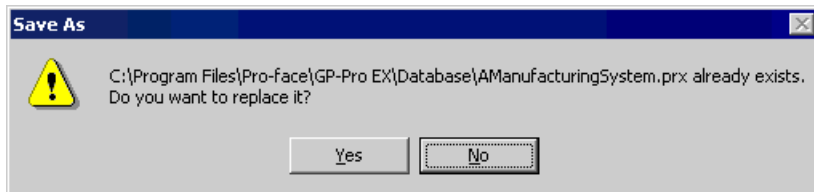



4 In [Convert-To], designate a GP-Pro EX's project file (*.prx). Click the [Browse] button, input a new [File name] (e.g.: "A Manufacturing System.prx"), and click . A new project file name is set to [Convert-To].

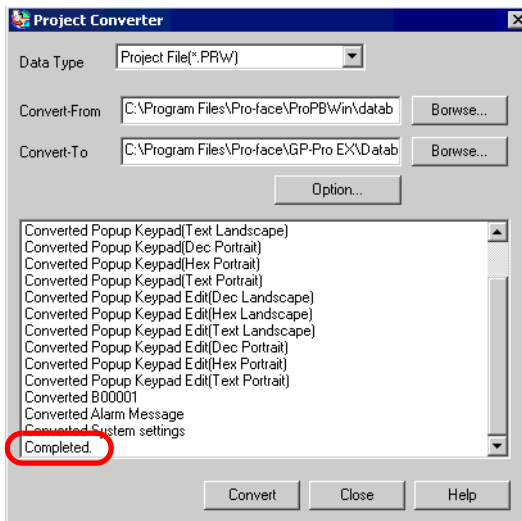
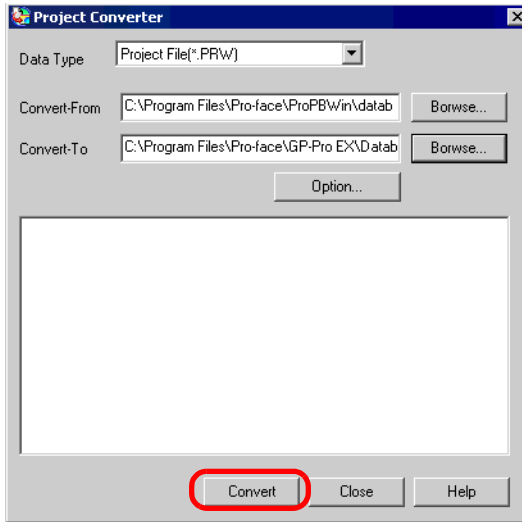


NOTE

- When a convert-to file exists, the window that confirms whether or not to overwrite the file is displayed.

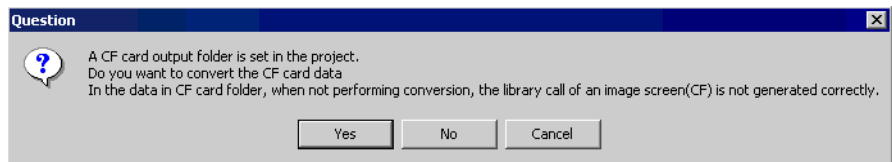




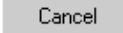
5 Click  and start the conversion.

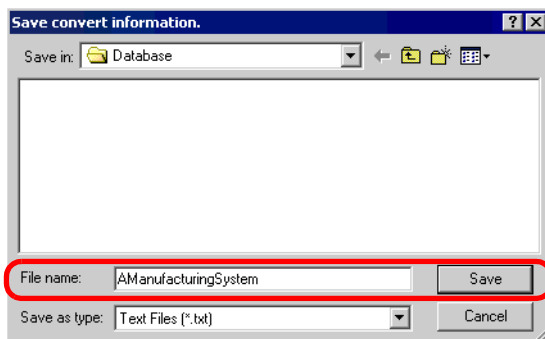


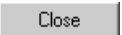
NOTE • When the following dialog box is displayed, you need to set the CF-card output folder.

☞ “ ■ GP-PRO/PBIII for Windows’ “CF-Card Data Destination Folder” Conversion” (page 2-12)



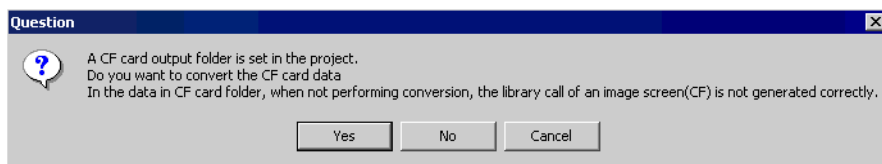
6 After conversion, the [Save Convert information] dialog box is displayed. If you click , you can save the conversion information in a text file. In this case, input a [File name] and click . If you click , you return to the [Project Converter] dialog box without saving the conversion information.



7 Click  to close the [Project Converter] dialog box.

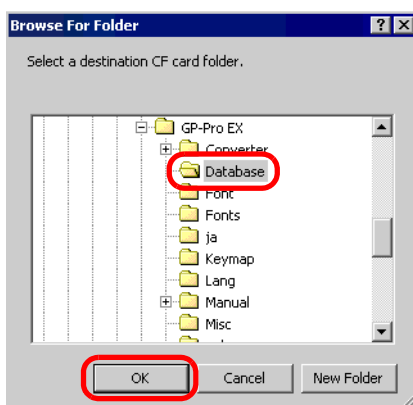
■ GP-PRO/PBIII for Windows’ “CF-Card Data Destination Folder” Conversion

When converting a project file (*.prw) with the CF-Card Data Destination Folder designated in Step 5, the question of whether or not to designate the CF-Card Data Destination Folder for the conversion destination is displayed as well.



Select a folder (e.g.: “Database”) and click [OK].

If you click the [New Folder] button, you can create a reference folder at any place.



IMPORTANT

- In the [Question] dialog box, be sure to select “Yes” and designate a convert-to folder. If you select “No”, called images are not properly displayed.

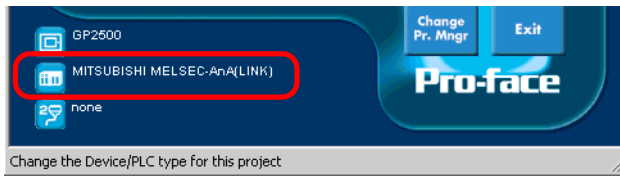
2.1.5 Error Message

The error messages displayed during Project Converter operation and the causes and solutions are as follows.

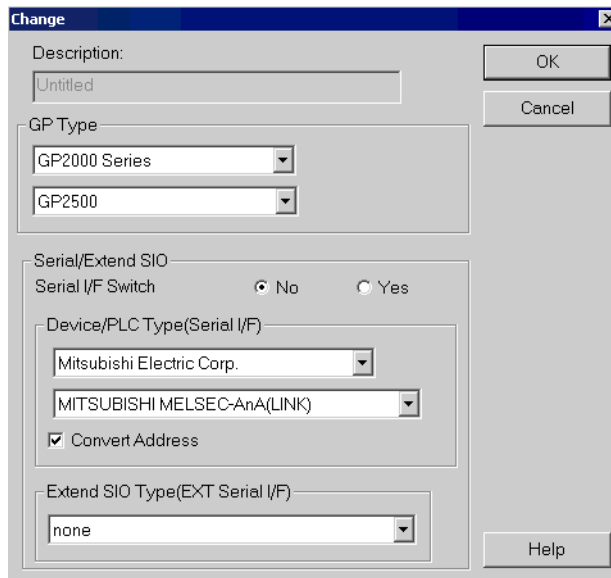
The selected Device/PLC is unavailable for conversion. Change the Device/PLC before conversion.

A device/PLC type which is not supported by GP-Pro EX is selected. In GP-PRO/PBIII for Windows, change the device/PLC to a device/PLC supported by GP-Pro EX and then execute Project Converter again. For devices/PLCs supported by GP-Pro EX, refer to “2.1.3 Device/PLC Name Before Conversion and After Conversion” (page 2-5) .

- How to change [Device/PLC Type] in GP-PRO/PBIII for Windows
 (1) Select the [Device/PLC Type] icon in GP-PRO/PBIII for Windows' Project Manager.



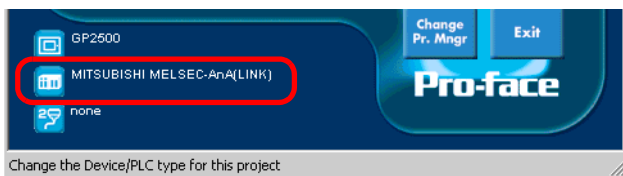
- (2) The [Change] dialog box is displayed. Select a [Device/PLC Type] you want to change to. Always confirm the device address settings after changing a [Device/PLC Type].



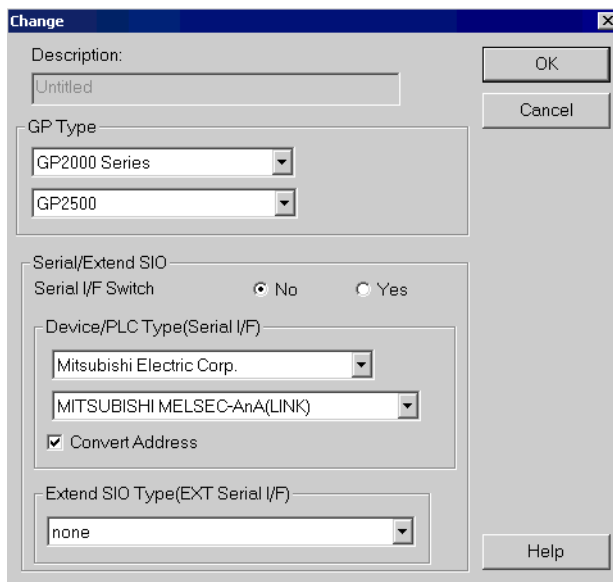
Cannot read the source Device/PLC file.

Cannot recognize the convert-from device/PLC type. In GP-PRO/PBIII for Windows, change the device/PLC to a device/PLC type supported by GP-Pro EX and then execute Project Converter again. For devices/PLCs supported by GP-Pro EX, refer to “2.1.3 Device/PLC Name Before Conversion and After Conversion” (page 2-5) .

- How to change [Device/PLC Type] in GP-PRO/PBIII for Windows
- (1) Select the [Device/PLC Type] icon in GP-PRO/PBIII for Windows’ Project Manager.



- (2) The [Change] dialog box is displayed. Select a [Device/PLC Type] you want to change to. Always confirm the device address settings after changing a [Device/PLC Type].

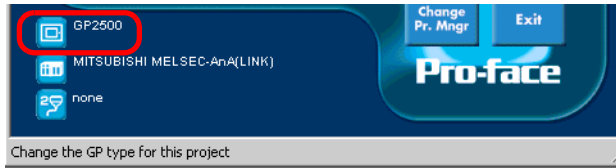


The selected model is unavailable for conversion. Change the model.

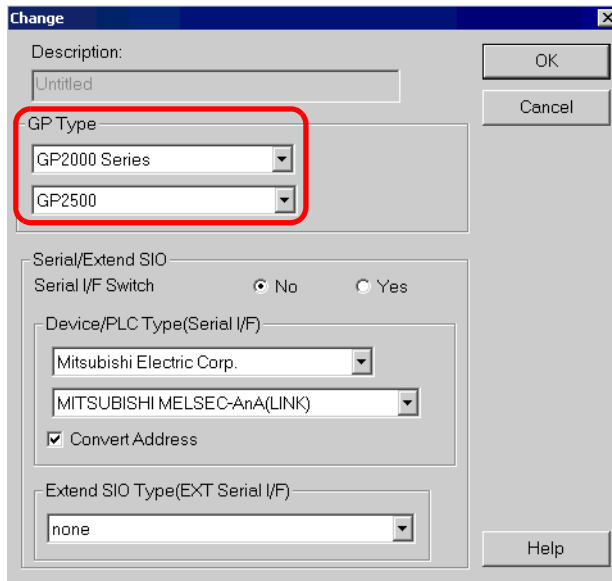
A display type which is not supported by GP-Pro EX is selected. In GP-PRO/PBIII for Windows, change the display type to a GP type supported by GP-Pro EX and then execute Project Converter again. For supported models, refer to “2.1.2 GP Model Names Before Conversion and After Conversion” (page 2-3) .

- How to change [GP Type] in GP-PRO/PBIII for Windows

(1) Select the [GP Type] icon in GP-PRO/PBIII for Windows’ Project Manager.



(2) The [Change] dialog box is displayed. Select a [GP Type] you want to change to. Be aware that the GP may have different features before and after conversion.



Cannot read the model information file.

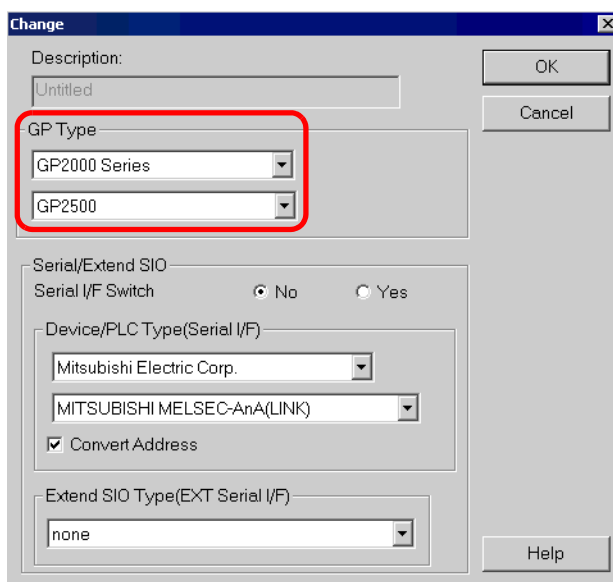
Cannot recognize the convert-from GP model. In GP-PRO/PBIII for Windows, change the display type to a GP type supported by GP-Pro EX and then execute Project Converter again. For supported models, refer to “2.1.2 GP Model Names Before Conversion and After Conversion” (page 2-3) .

- How to change [GP Type] in GP-PRO/PBIII for Windows

(1) Select the [GP Type] icon in GP-PRO/PBIII for Windows' Project Manager.



(2) The [Change] dialog box is displayed. Select a [GP Type] you want to change to. Be aware that the GP may have different features between before and after conversion.



Cannot read AGPCnv.cfg file.

Failed to load GP-Pro EX's AGPCnv.cfg file. Install GP-Pro EX again.

Cannot read the prw file.

Failed to read a GP-PRO/PBIII for Windows file (*.prw). Microsoft Windows access authority may be set to the GP-PRO/PBIII for Windows file (*.prw). Check the file properties in Explorer and check the access authority settings.

Cannot access the parts file.

Failed to read a GP-PRO/PBIII for Windows' Part file (*.PDB or *.BPD). Microsoft Windows access authority may be set to the GP-PRO/PBIII for Windows' Part file (*.PDB or *.BPD). Check the file properties in Explorer and check the access authority settings.

Invalid extention.

An incorrect extension is designated in Project Converter's [Convert To]. Input a correct extension (*.prx).

2.2 How to Update Software

This section explains how to update GP-Pro EX. Apart from software, there are also update programs for manuals and drivers.

NOTE

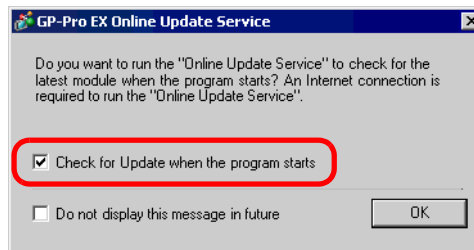
- For GP-Pro EX updates, use the online update function. An Internet connection is required.
- Please understand that contents of the published screens in this operation procedure will update with no advance notice.

2.2.1 Online Update Operation Procedure

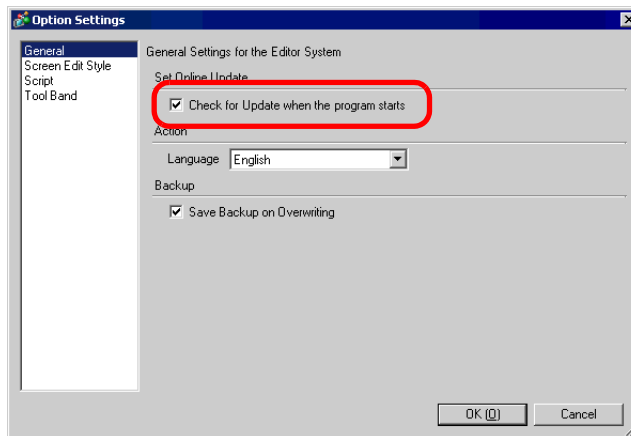
1 Select the [Help (H)] menu - [Confirm Update of GP-Pro EX] command.

NOTE

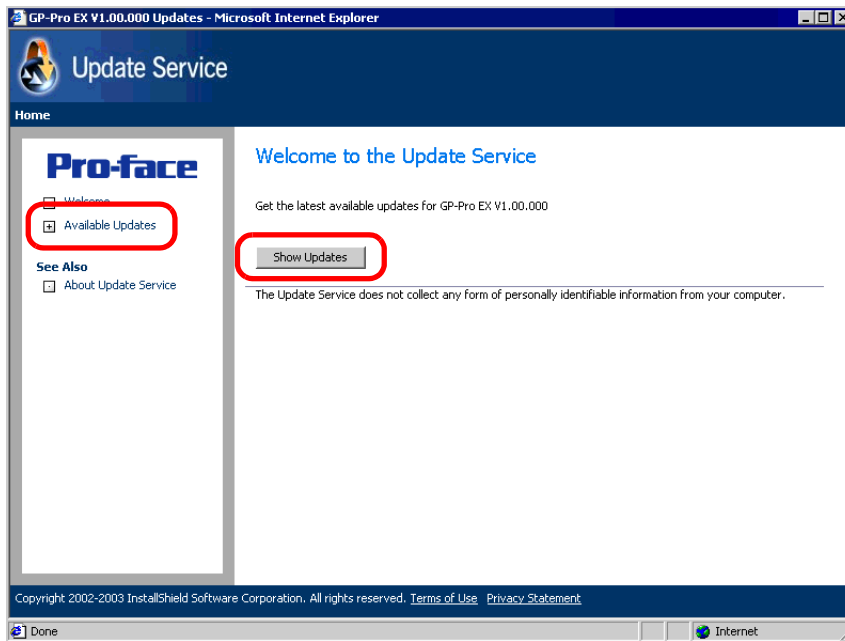
- When you startup GP-Pro EX, the following type of dialog box appears. To automatically start the online update function every time you start GP-Pro EX, beginning with the next time, leave the check mark next to [Check for Update when the program starts] and click [OK].
If you want to occasionally confirm if there is a necessary update, remove the check mark and click [OK].



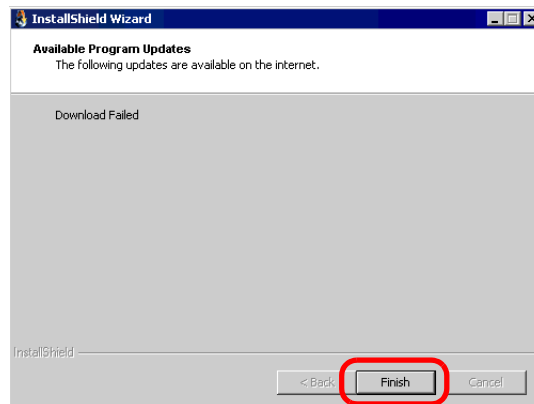
The settings for starting the online update function when GP-Pro EX starts are normally as follows. From [View (V)], select [Option Settings (O)] command - [General]. Put a check mark next to the [Check for Update when the program starts] option and click [OK].



- 2 Search for whether or not there are any necessary program updates via the Internet on the computer you are using. (The [InstallShield Wizard] dialog box will appear while searching.) When the [Welcome to the Update Service] screen appears, click the [Available Updates] or [Show Updates] button.

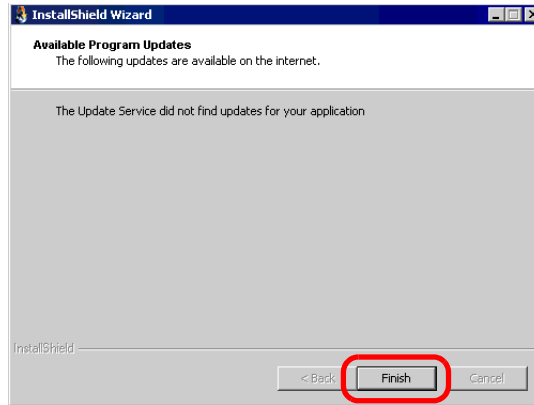
**NOTE**

- If you do not have an Internet connection, the following error will occur. Once you are connected, click the [Finish] button. The GP-Pro EX startup time search will not be displayed.

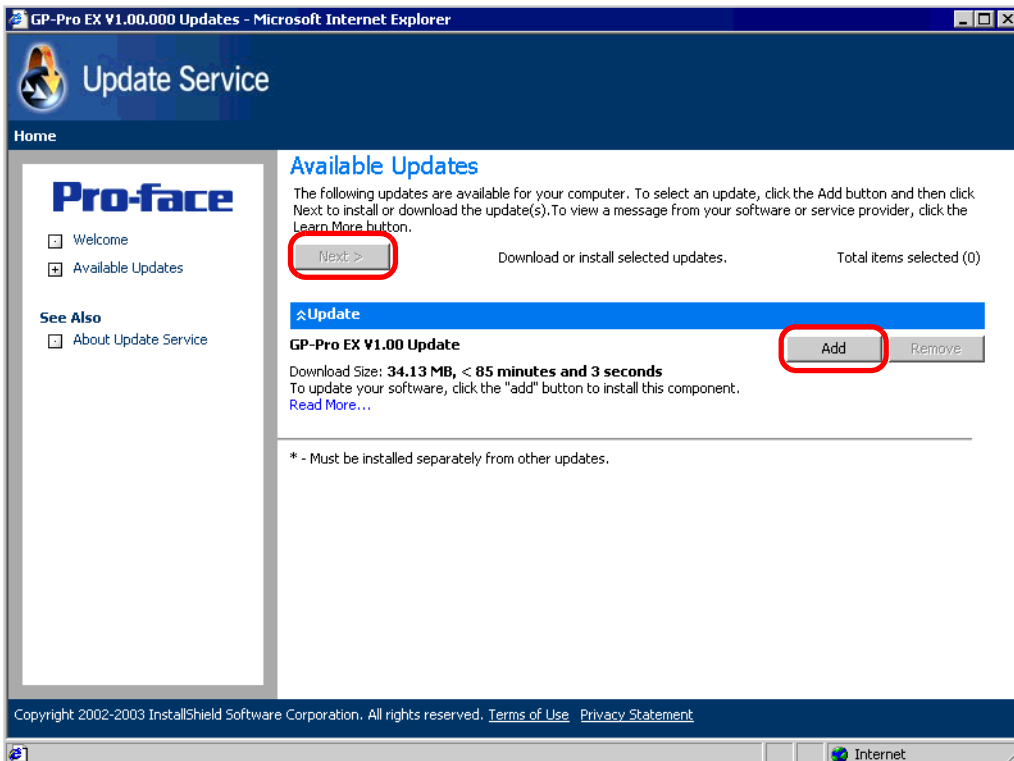


NOTE

- After searching, if there are no program updates, the following dialog box will appear.
Click the [Finish] button to finish. The GP-Pro EX startup time search will not be displayed.

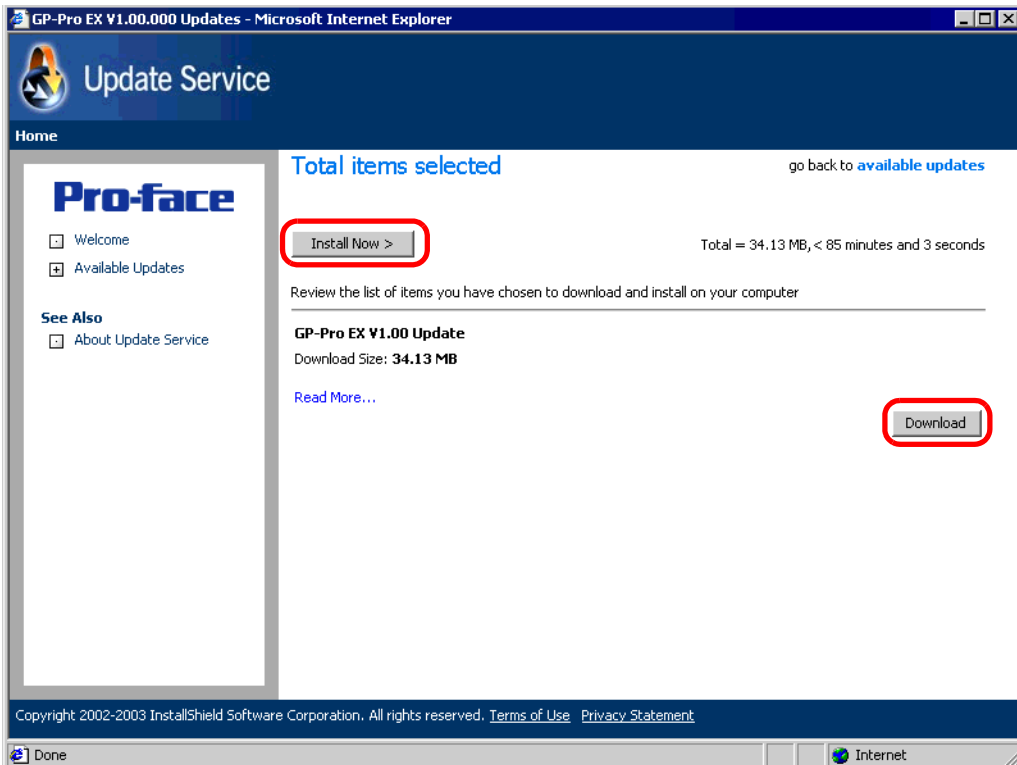


- 3 When the [Available Updates] screen appears, you can confirm the program updates. Select the items you want update with the [Add] button, and click the [Next] button.

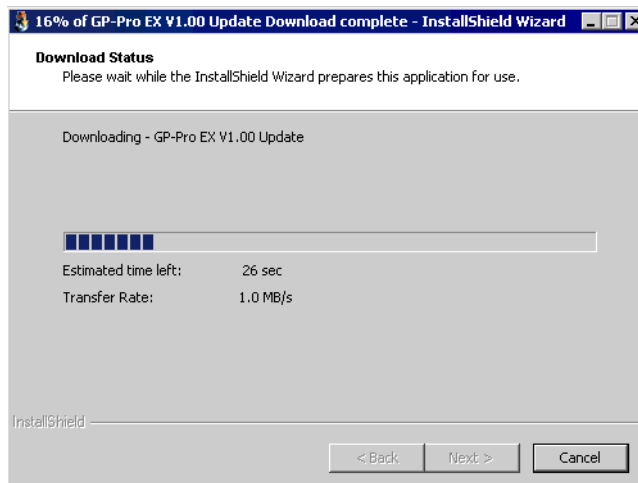
**NOTE**

- You can confirm the program updates by expanding **Update**. If there is an arrow pointing down, click the arrow to expand the selection.
- The previous [Available Updates] screen's update item is an example. You can confirm the latest program updates on your computer.

- 4 The [Total items selected] screen will appear. You can either automatically install all selected items, or install items separately.

**NOTE**

- Please close all GP-Pro EX project files before installing.
- Click the [Install Now >] button
Automatically starts the installation of all selected program updates.
After all program updates are finished downloading, click [Update] and the install begins.
Please follow the wizard's instructions. To cancel the installation, click the [Cancel] button.



- Click the [Download] button
Individually starts the installation of selected program updates. Click the [Download] button, select a save location for the program updates, and click the [Save] button. Next, click the [Finish] button to complete the wizard. Double-click the saved program updates (*.exe) and the installation will automatically begin.

5 The installation of product updates for the software is now complete.

When the installation of the manual's product updates completes, the message [The setup was completed.] will appear, so click [OK] to finish.

