

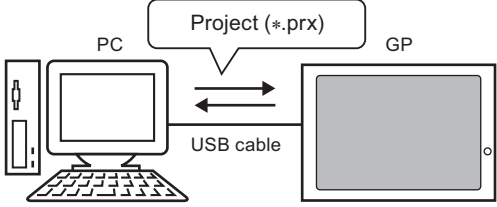
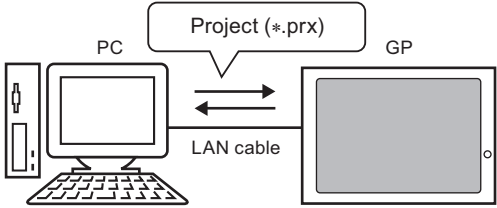
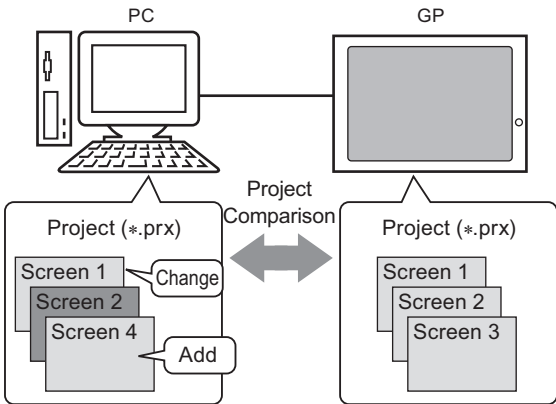
27 | Transferring Data

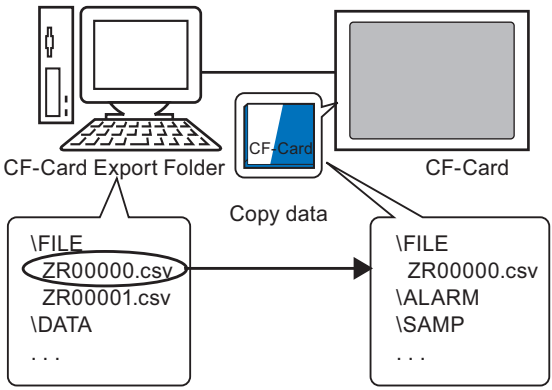
This chapter will explain how to transfer project files to the GP in order to display screens created in GP-Pro EX on the GP, and how to transfer the project file currently saved in the GP to a PC.

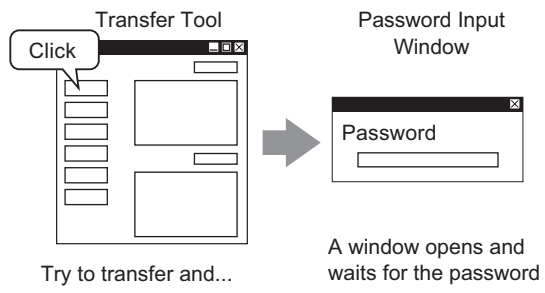
Please start by reading “27.1 Settings Menu” (page 27-2) and then turn to the corresponding page.

27.1	Settings Menu	27-2
27.2	Transferring with a USB Transfer Cable	27-4
27.3	Transferring Using Ethernet (LAN).....	27-11
27.4	Confirming Projects' Changes Prior to Transfer (Comparison).....	27-24
27.5	Transferring Only Data to a CF-Card	27-27
27.6	Permitting Transfer with Passwords.....	27-30
27.7	Transfer Tool Settings Guide.....	27-35
27.8	Restrictions	27-43

27.1 Settings Menu

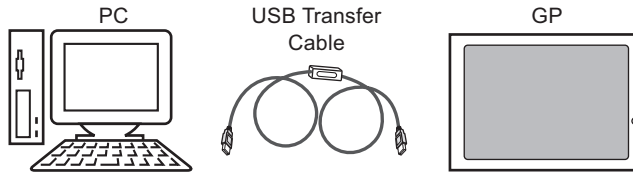
Transferring with a USB Transfer Cable	
<p>Use a USB transfer cable to transfer project files (*.prx).</p>	 <p> ☞ Setup Procedure (page 27-5) ☞ Details (page 27-4) </p>
Transferring Using Ethernet (LAN)	
<p>Use a LAN cable to transfer project files (*.prx).</p>	 <p> ☞ Setup Procedure (page 27-12) ☞ Details (page 27-11) </p>
Confirming Projects' Changes Prior to Transfer (Comparison)	
<p>Compare the project files (*.prx) on the PC and GP, and check which screens have been updated.</p>	 <p> ☞ Setup Procedure (page 27-25) ☞ Details (page 27-24) </p>

Transferring Only Data to a CF-Card	
<p>Without transferring the project file, copy recipe data to the CF-card in the GP, and alarm data from the CF-card to a PC.</p> 	<ul style="list-style-type: none"> ☞ Setup Procedure (page 27-28) ☞ Details (page 27-27)

Permitting Transfer with Passwords	
<p>When transferring data, a Password Input Window is displayed which prevents the transfer if passwords do not match.</p> 	<ul style="list-style-type: none"> ☞ Setup Procedure (page 27-31) ☞ Details (page 27-30)

27.2 Transferring with a USB Transfer Cable

Use a USB transfer cable made by Digital (type: CA3-USBCB-01) to connect a PC and the GP, and transfer project files (*.prx).



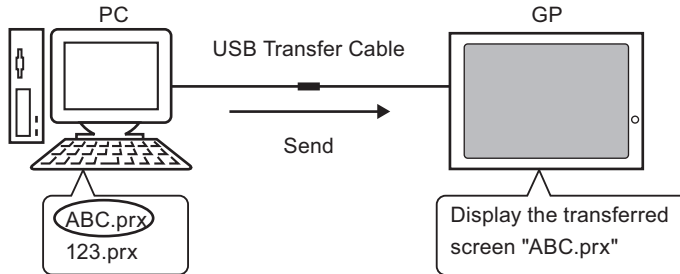
IMPORTANT

- For information on the cable's specifications and usage method, please refer to the user's manual belonging to the USB transfer cable you are using.

27.2.1 Details

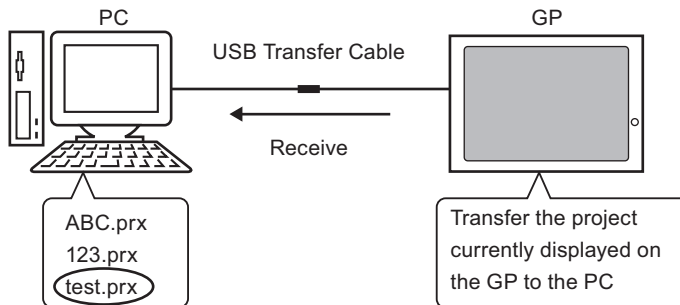
- Transfer from PC to GP (Send)

You can send the selected project files (*.prx) to the GP and display the project.



- Transfer from GP to PC (Receive)


Project data stored in the GP can be saved to the PC as a new project file (*.prx).



27.2.2 Transfer Procedure

■ Transfer from PC to GP (Send)

This procedure is used when sending the first project to the GP.

-
- NOTE**
- For more information about the Send function, please refer to “27.7.2 Sending” (page 27-39).
 - Please refer to the settings guide for details.
 “27.7 Transfer Tool Settings Guide” (page 27-35)
-

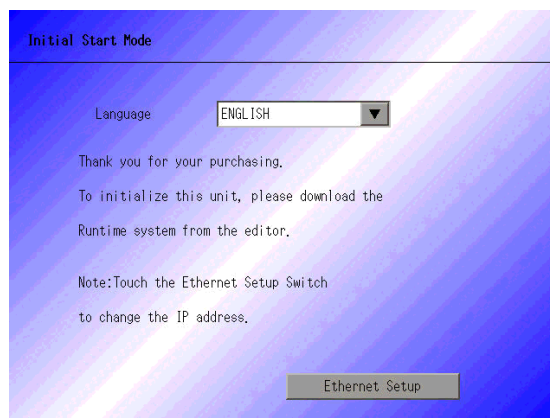
1 Connect the PC and GP using the optional USB transfer cable set.

A dialog box will appear if the USB cable’s drivers are not installed. Please install them as directed.


-
- NOTE**
- Depending on Windows XP’s security level, the following [Hardware Installation] dialog box will be displayed while installing the USB drivers. Click [Continue Anyway] and the driver installation for CA3-USBCB-01 will begin. When the installation finishes, click [Complete].

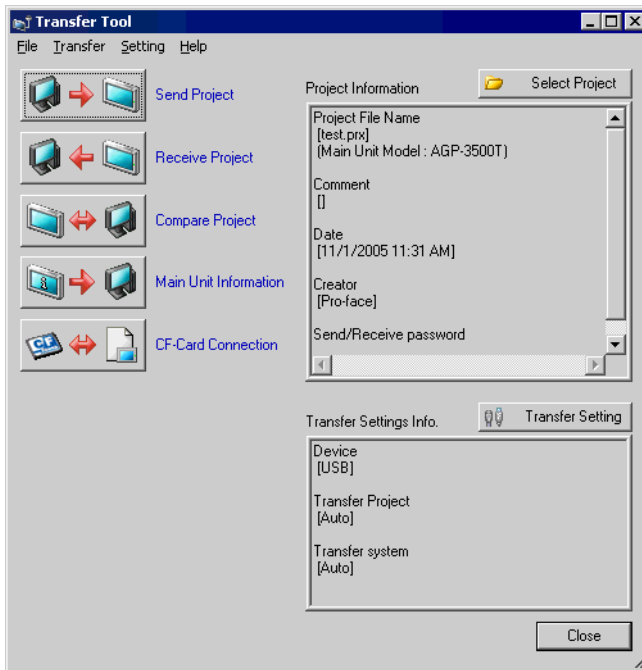


2 Turn ON the GP’s power. The GP’s [Initial Start Mode] screen will be displayed. (GP Screen)



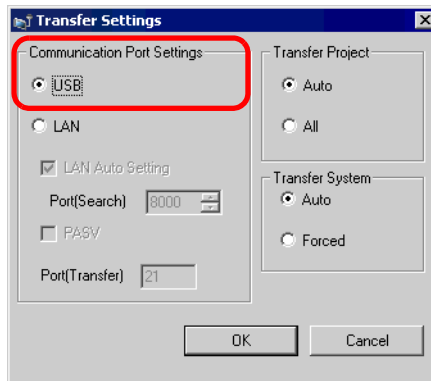
This screen will appear when you first connect the GP’s power cord. After transferring a project once, this screen will not appear.

3 From GP-Pro EX's State Tool Bar, click the Transfer Project icon  and bring up the Transfer Tool.



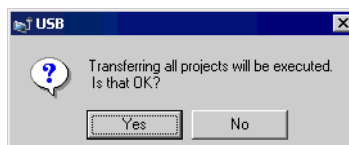
4 Check the project file name, etc., for the project to be transferred in [Project Information]. If you want to transfer a different project, click the [Select Project] button and choose a project.

5 Make sure that the [Device] is [USB] in the [Transfer Settings Info.]. If it is not [USB], click [Transfer Setting] and the following [Transfer Settings] dialog box will appear. Put a check mark next to [USB] in the [Communication Port Settings] and click [OK].



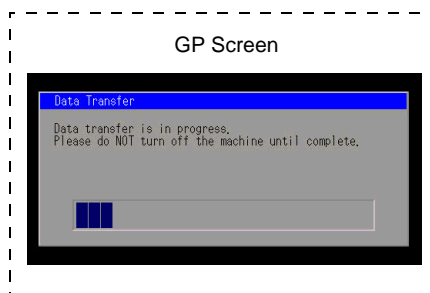
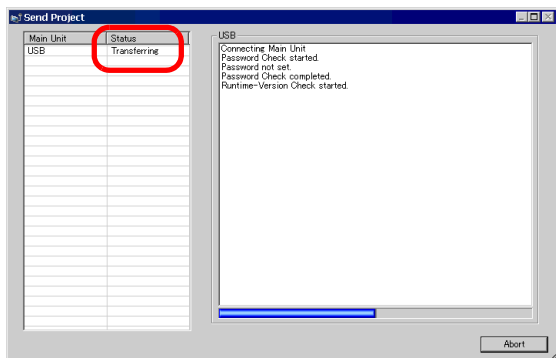
6 Click [Send Project].

The transfer will begin. When the following dialog box appears, click [Yes]. This dialog box is not displayed when the same project file is sent again.



The following dialog box will be displayed during transfer and you can check the communication status.

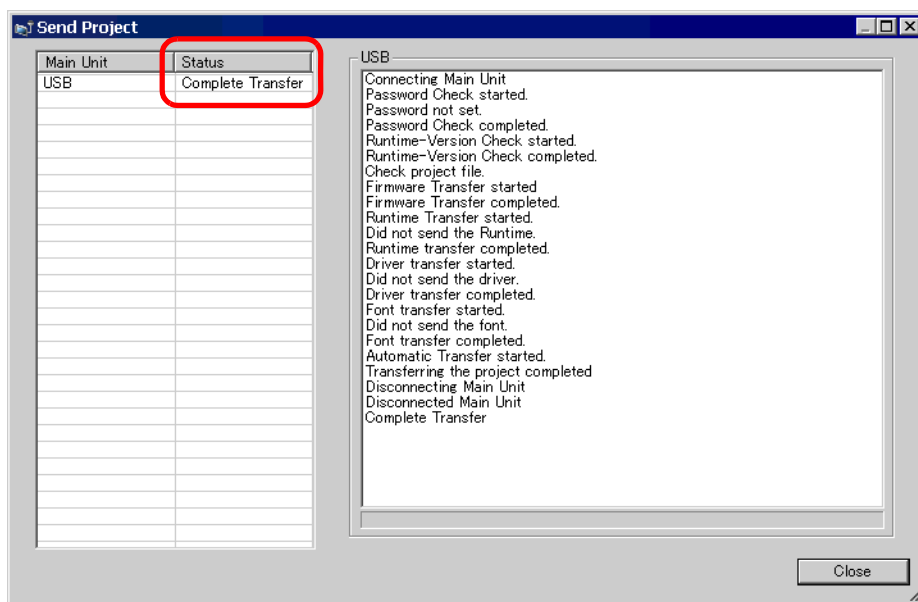
(The GP switches into Transfer mode and communication with the device (PLC) is severed.)



7 When the transfer completes, the status displayed in the dialog box will change from [Transferring] to [Complete Transfer].

Click [Close] and the dialog box will close.


(The GP will be reset and the transferred project's screens will be displayed.)




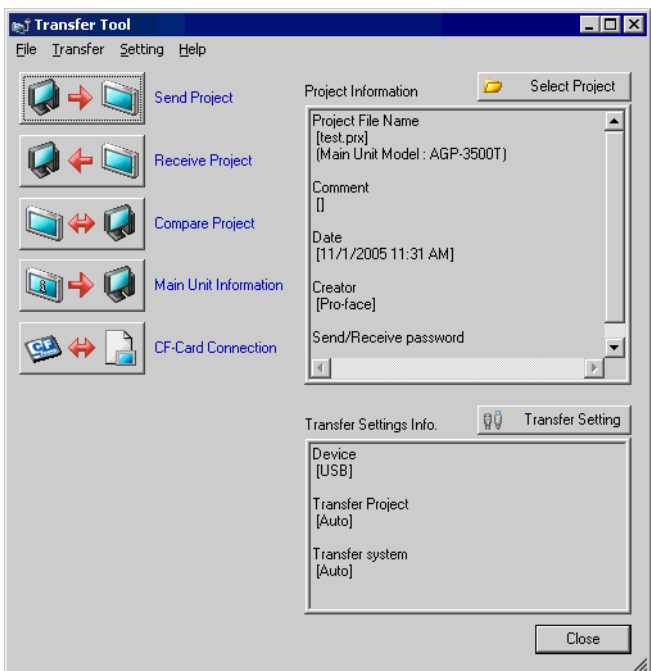
8 Close the dialog box to return to the Transfer Tool. Click [Close] and the Transfer Tool screen will close.

■ Transfer from GP to PC (Receive)

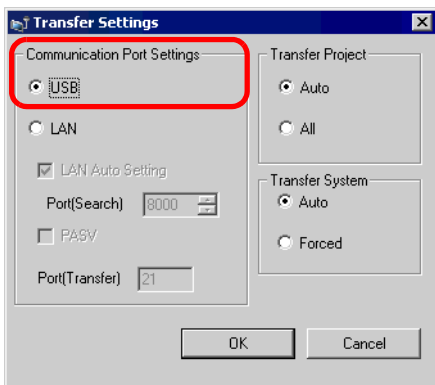
Receives project data currently stored on the GP to a PC.

- NOTE**
- For more information about the Receive function, please refer to “27.7.3 Receiving” (page 27-40) .
 - Please refer to the settings guide for details.
 “27.7 Transfer Tool Settings Guide” (page 27-35)

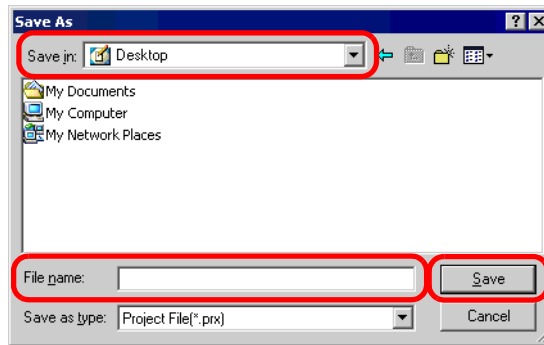
- 1 Connect the PC and GP using the optional USB transfer cable set.
- 2 From GP-Pro EX’s State Tool Bar, click the Transfer Project icon  and bring up the Transfer Tool.



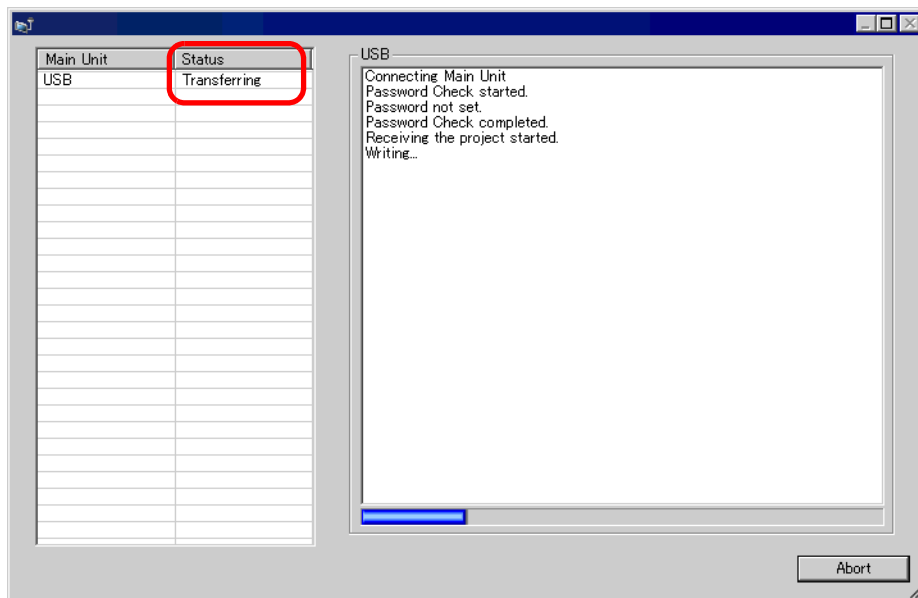
- 3 Click [Transfer Setting] and the following [Transfer Settings] dialog box will be displayed. Select [USB] at [Communication Port Settings] and click OK.



- 4 Click [Receive Project]. The following dialog box will appear. Set a save location and project file name for the data to be received. Click [Save] and the transfer will start.

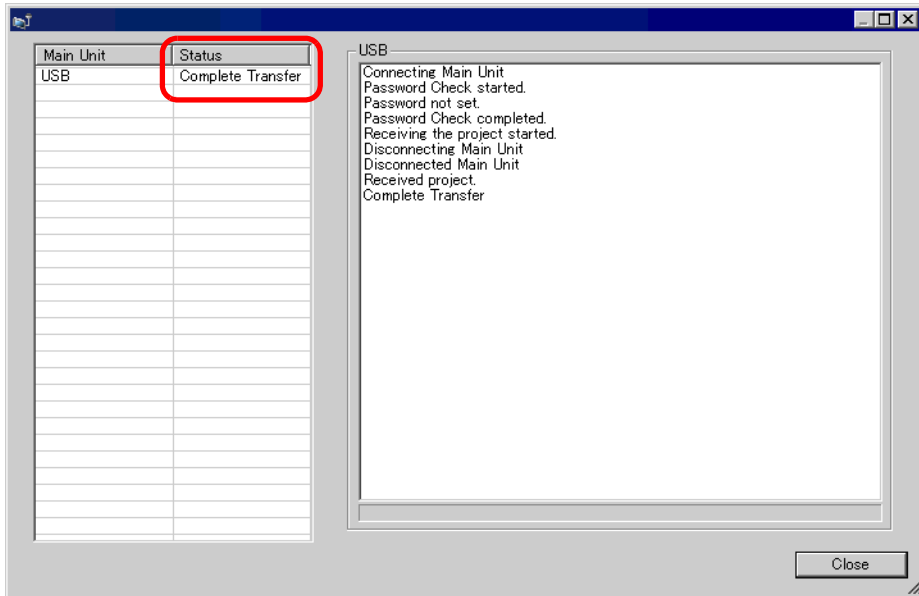


The following dialog box will be displayed during transfer and you can check the communication status.

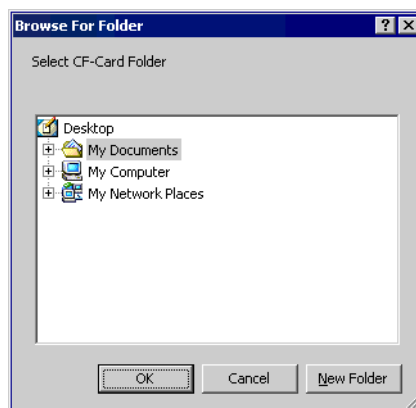


5 When the transfer completes, the status displayed in the dialog box will change from [Transferring] to [Complete Transfer].

Click [Close] and the dialog box will close.



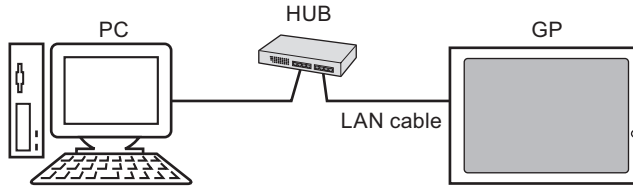
If you receive a project file which is using the Recipe function (CSV data) or other CF-card data, the following dialog box will appear. Specify the location to save the CF-card's data. Click [OK] to return to the [Receive Project] dialog box and complete the process.



6 Close the dialog box to return to the Transfer Tool. Click [Close] and the Transfer Tool screen will close.

27.3 Transferring Using Ethernet (LAN)

Use a LAN cable and transfer project files (*.prx) using Ethernet.



IMPORTANT

- To communicate using Ethernet, Ethernet settings (IP address, port number, etc.) must be set up on the GP.

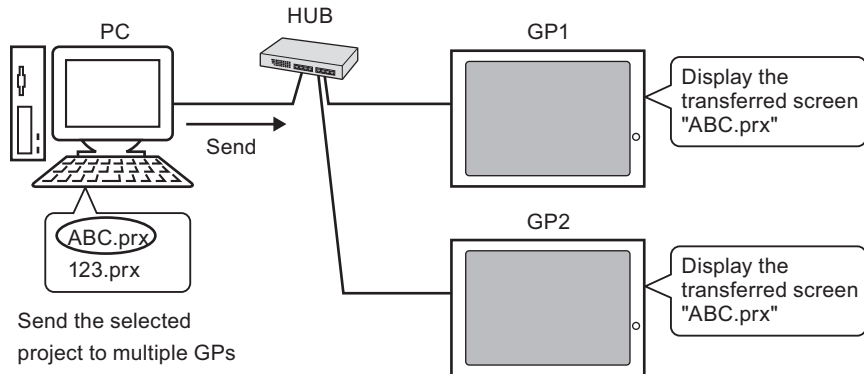
NOTE

- You can also connect a PC and the GP directly with a cross cable without using a HUB.

27.3.1 Details

- Transfer from PC to GP (Send)

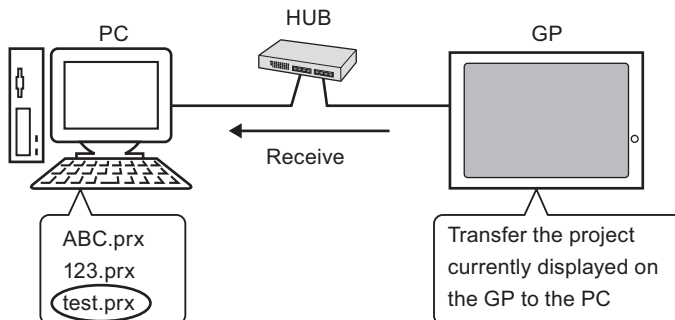
You can send the selected project files (*.prx) to the GP and display the project. The same project can be sent to multiple GPs on the network.



- Transfer from GP to PC (Receive)

Project data stored in the GP can be saved to the PC as a new project file (*.prx).

Even if multiple GPs exist on the network, data will only be received from one selected GP.



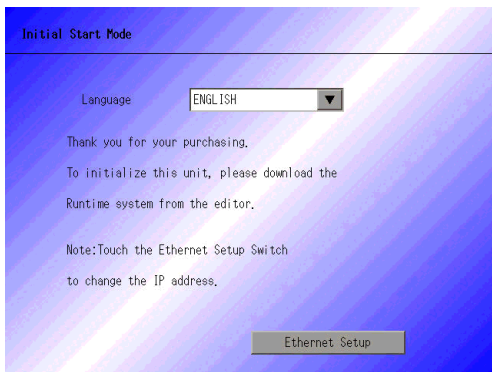
27.3.2 Transfer Procedure

■ Transfer from PC to GP (Send)

This procedure is used when sending the first project to the GP.

-
- NOTE**
- For more information about the Send function, please refer to “27.7.2 Sending” (page 27-39).
 - The IP address preset at the time of purchase can be used to transfer data.
 ☞ “ ■ Data Transfer Using the Factory-set IP Address” (page 27-20)
 - Please refer to the settings guide for details.
 ☞ “27.7 Transfer Tool Settings Guide” (page 27-35)
-

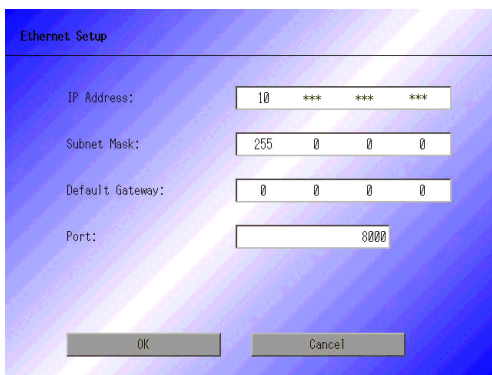
- 1 Connect the LAN cable to the GP, and connect it to a network with the PC where GP-Pro EX is installed. (Specify the IP address of the same network on the PC.)
- 2 Turn ON the GP’s power. The GP’s [Initial Start Mode] screen will be displayed.



This screen will appear when you first connect the GP’s power cord. After transferring a project once, this screen will not appear.

- 3 Set the IP address on the GP. Touch [Ethernet Setup]. The following screen will appear, and the contents set at the time of transfer will be displayed.


-
- NOTE**
- The IP address is set by default to 10.***.***.***. The *** part depends on the individual model.
-

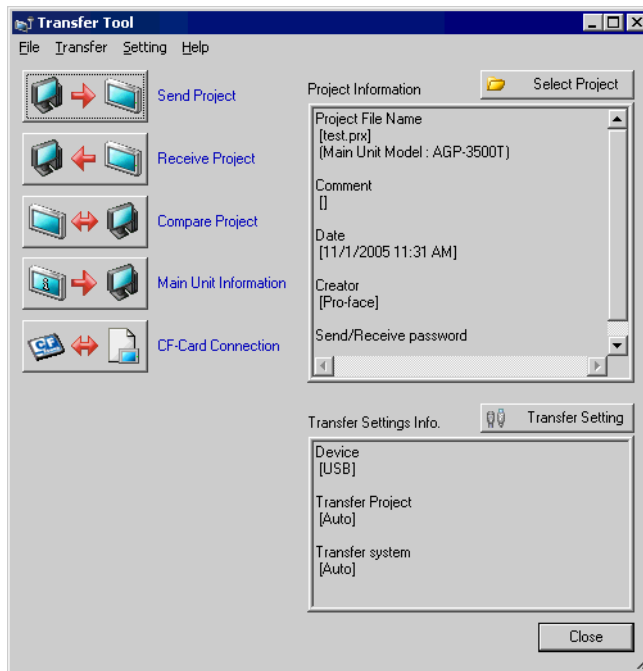


- 4 Modify the IP address, subnet mask, etc., and touch [OK].
 (e.g.: First GP unit: [IP Address] 192.168.0.1; [Subnet Mask] 255.255.255.0)
 Set the IP address of the same network also to other GPs.

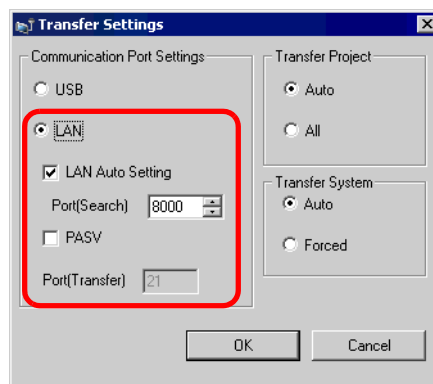
- 5 The confirm restart message will appear. Touch [Yes] and the system will restart. After restarting, the [Initial Start Mode] screen will be displayed again.

NOTE • Once a project has been transferred, starting from the next time, the [Initial Start Mode] screen will not appear. If you want to change Ethernet settings after this time, do so on the GP offline screen.

- 6 From GP-Pro EX's State Tool Bar, click the Transfer Project icon  and bring up the Transfer Tool.

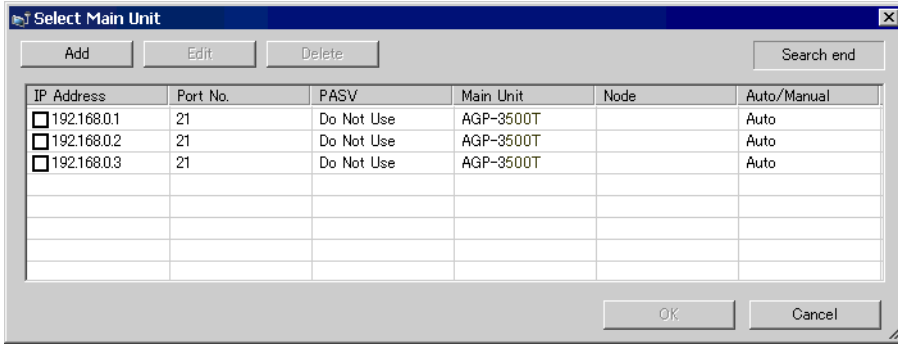


- 7 Check the project file name, etc., for the project to be transferred in [Project Information]. If you want to transfer a different project, click the [Select Project] button and choose a project.
- 8 Click the [Transfer Setting] button and the following [Transfer Settings] dialog box will be displayed. Select [LAN] at [Communication Port Settings], put a check mark next to [LAN Auto Setting], and click [OK].

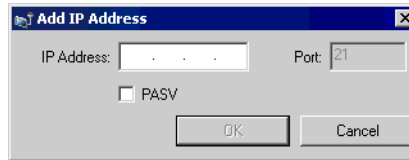


You can open the same dialog box by selecting GP-Pro EX's [Project (F)] menu - [Transfer Project (G)] option - [Transfer Settings (C)] command.

9 When [Send Project] is clicked, the [Select Main Unit] dialog box will open, and the IP addresses of the GPs on the network will be displayed.



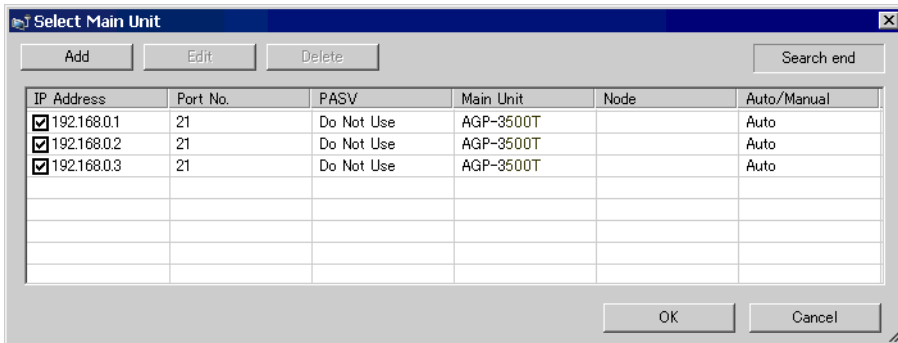
- NOTE**
- Only GPs which correspond to the subnet masks of the PCs used for transfer will be retrieved.
 - If the IP address was not automatically acquired, click [Add] and manually enter the IP address.



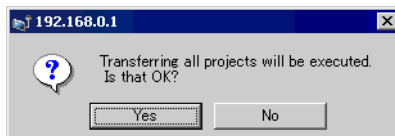
- If you cannot transfer because of limits to your access such as a firewall or router between the computer and the GP, putting a check mark next to the [PASV] option will sometimes allow you to transfer.

10 Put a check mark next to the IP address of the GP you want to transfer to and click [OK]. The transfer will begin.

When multiple IP addresses are checked, the project will be sent to multiple GPs at once.



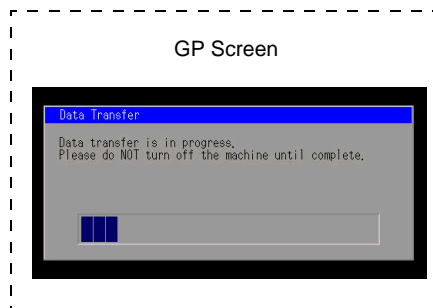
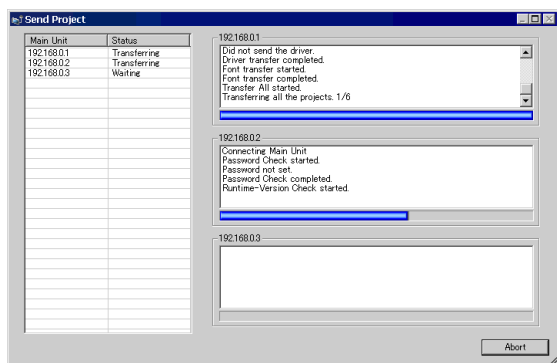
11 When the following dialog box appears, click [Yes]. (This dialog box will not be displayed when the same project file is sent again.)



The following dialog box will be displayed during transfer and you can check the communication status.

The following is an example of sending multiple projects.

(The GP switches into Transfer mode and communication with the device (PLC) is severed.)

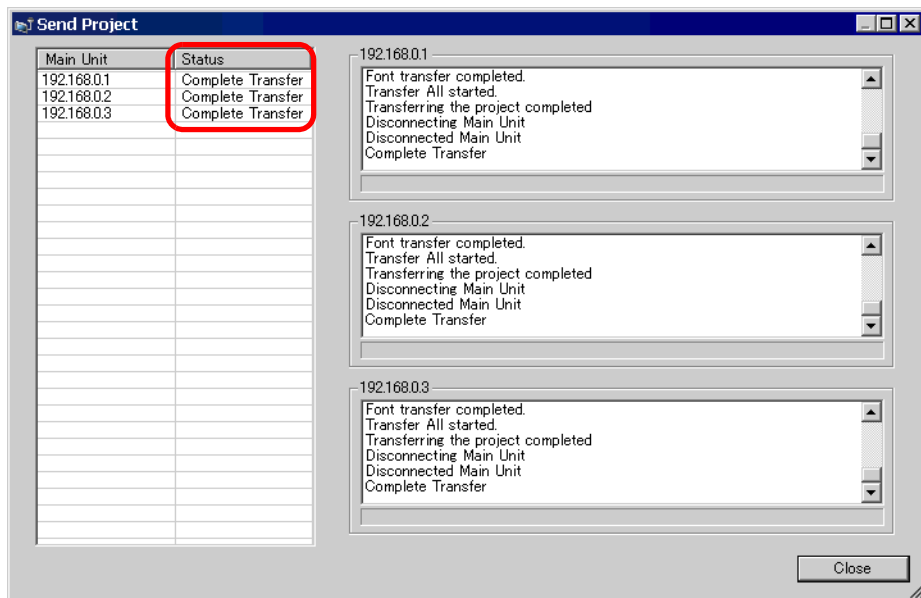
**NOTE**

- When multiple IP addresses are selected, the first GP starts to transfer. When the transfer has progressed to a certain point, the second GP starts to transfer. When the transfer of the second GP has progressed to a certain point, the third GP starts to transfer. The remaining GPs operate in the same manner.
- If a password is set to any project file transferred to one of the GPs, the next GP cannot start transfer until the password is confirmed.

12 When the transfer completes, the status displayed in the dialog box will change from [Transferring] to [Complete Transfer].

Click [Close] and the dialog box will close.

(The GP will be reset and the transferred project's screens will be displayed.)




13 Close the dialog box to return to the Transfer Tool. Click [Close] and the Transfer Tool screen will close.

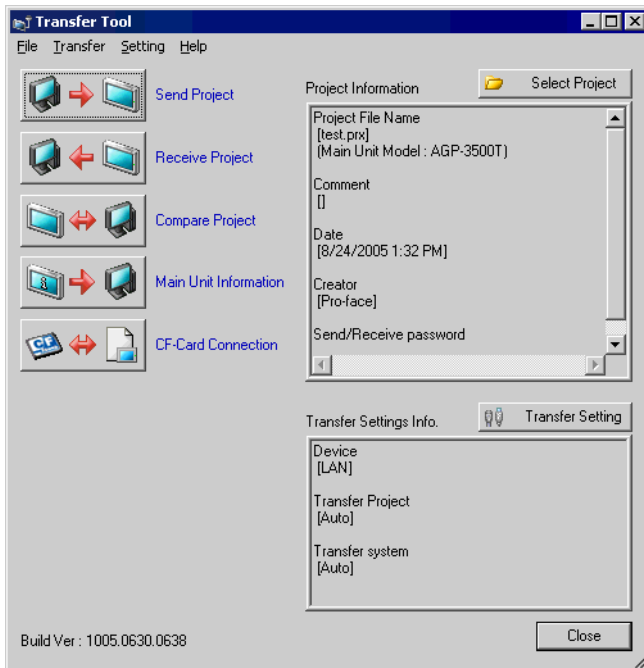
■ **Transfer from GP to PC (Receive)**

Receives project data currently stored on the GP to a PC. You must set an IP address on the GP prior to receiving data using Ethernet.

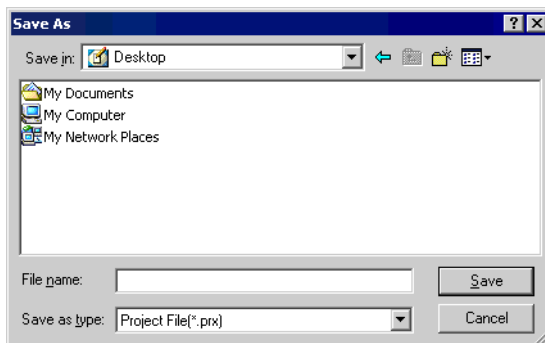
NOTE

- For more information about the Receive function, please refer to “27.7.3 Receiving” (page 27-40) .
- Please refer to the settings guide for details.
☞ “27.7 Transfer Tool Settings Guide” (page 27-35)
- Set an IP address in the “Ethernet Settings” on the offline screen.

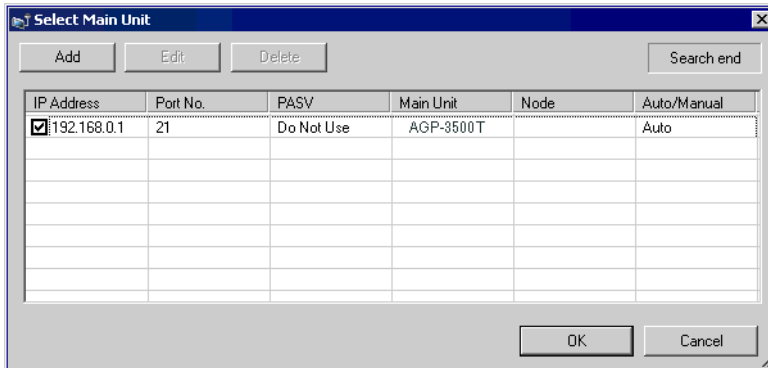
- 1 Connect the LAN cable to the GP, and connect it to a network with the PC where GP-Pro EX is installed. (Specify the IP address of the same network on the PC.)
- 2 From GP-Pro EX’s State Tool Bar, click the Transfer Project icon  and bring up the Transfer Tool. Please ensure that [LAN] is selected for [Transfer Settings Info.]’s [Device].



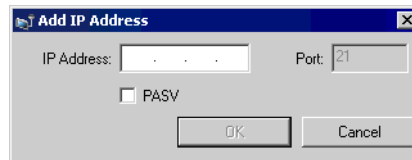
- 3 Click [Receive Project]. The [Save As] dialog box will be displayed. Specify the [Save in] location and [File name] for the data to be received, and click [Save].



4 The [Select Main Unit] dialog box will be displayed, and the IP addresses of the GPs on the network will be listed. Put a check mark next to the IP address of the target GP and click [OK]. The file reception will begin.

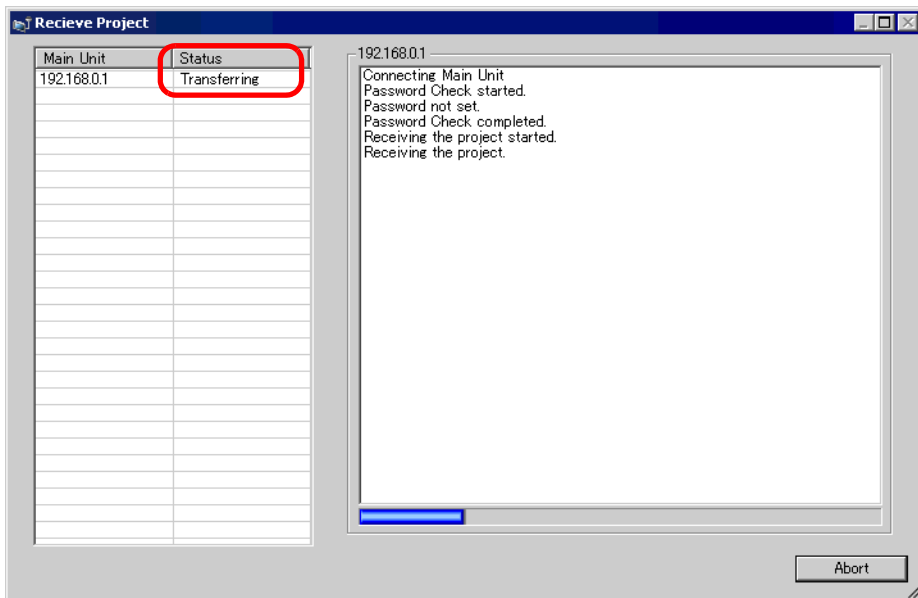


- NOTE**
- Only GPs which correspond to the subnet masks of the PCs used for transfer will be retrieved.
 - If the IP address was not automatically acquired, click [Add] and manually enter the IP address.



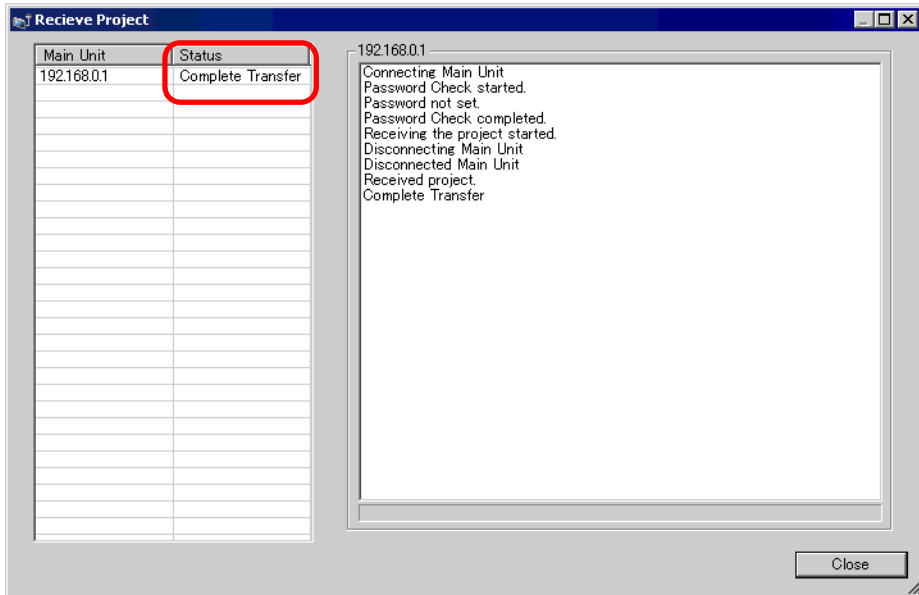
- If you cannot transfer because of limits to your access such as a firewall or router between the computer and the GP, putting a check mark next to the [PASV] option will sometimes allow you to transfer.

The following dialog box will be displayed during file reception and you can check the communication status.



5 When the file reception completes, the status displayed in the dialog box will change from [Transferring] to [Complete Transfer].

Click [Close] and the dialog box will close.



If you receive a project file which is using the Recipe function (CSV data) or other CF-card data, the following dialog box will appear. Specify the location to save the CF-card's data. Click [OK] to return to the [Receive Project] dialog box and complete the process.



6 Close the dialog box to return to the Transfer Tool. Click [Close] and the Transfer Tool screen will close.

■ Data Transfer Using the Factory-set IP Address

The default IP address of the GP is set at the factory. When transferring with this IP address, change the IP address used by the PC you wish to transfer to.

IMPORTANT

- Do not use the factory-set IP address when a private address “10.***.***.***” is used on the same network. Otherwise, a network communication error may occur.

NOTE

- Please refer to the settings guide for details.
☞ “27.7 Transfer Tool Settings Guide” (page 27-35)

1 Modify the PC’s IP address subnet mask.

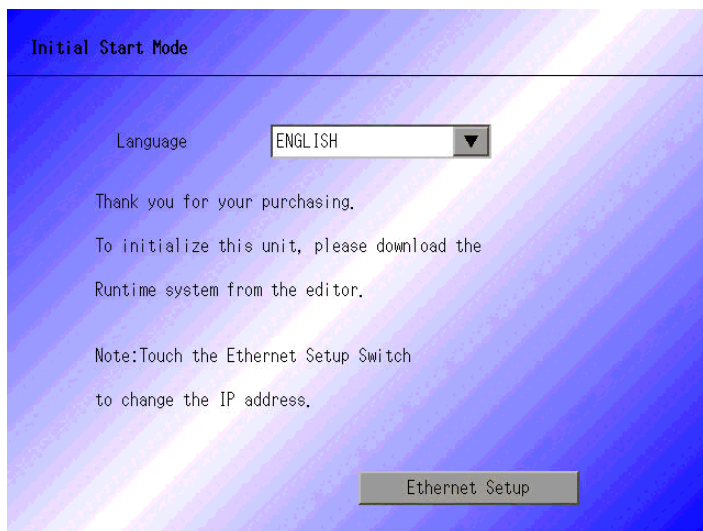
Set the IP address within the range of “10.255.255.1” to “10.255.255.254” and the subnet mask to “255.0.0.0”.


NOTE

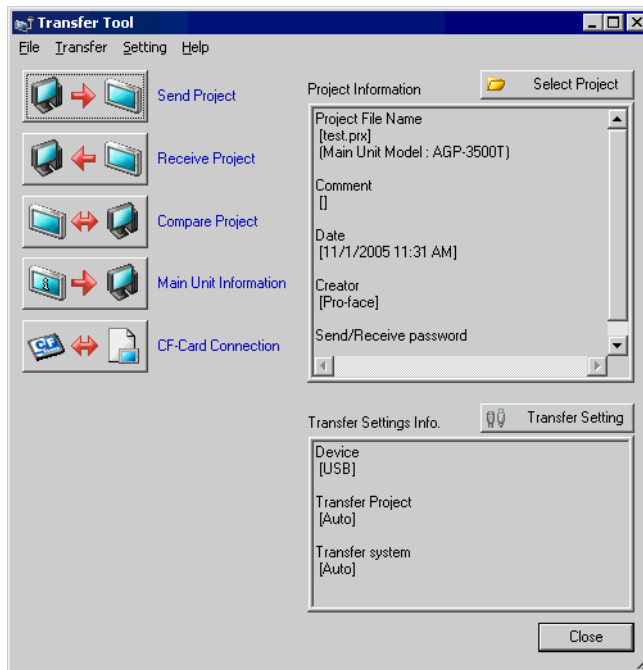
- Depending on the PC, you may have to restart before the settings will take effect.

2 Connect the LAN cable to the GP, and connect it to a network with the PC where GP-Pro EX is installed.

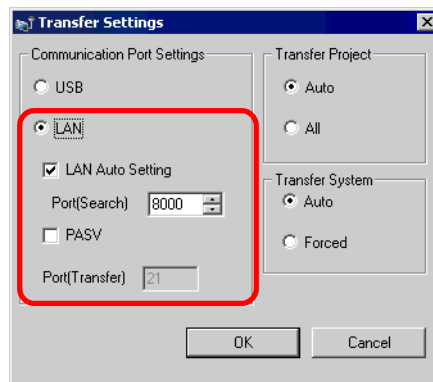
3 Turn ON the GP’s power. The GP’s [Initial Start Mode] screen will be displayed. Ethernet settings do not need to be set.



4 From GP-Pro EX's State Tool Bar, click the Transfer Project icon  and bring up the Transfer Tool.

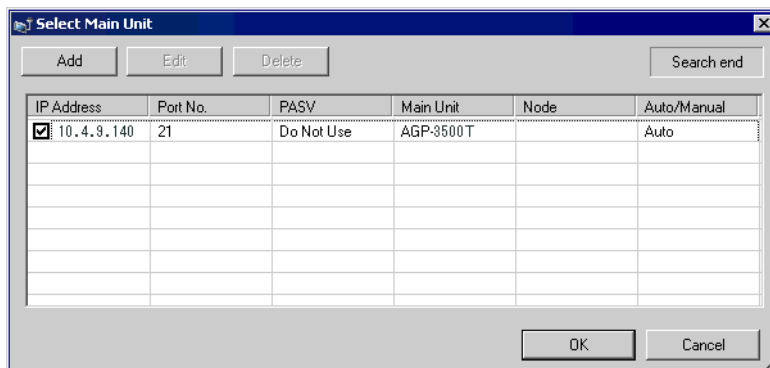


5 Click the [Transfer Settings] button. The following dialog box will open. Select [LAN] at [Communication Port Settings], make sure that [LAN Auto Setting] has a check mark, and click [OK].



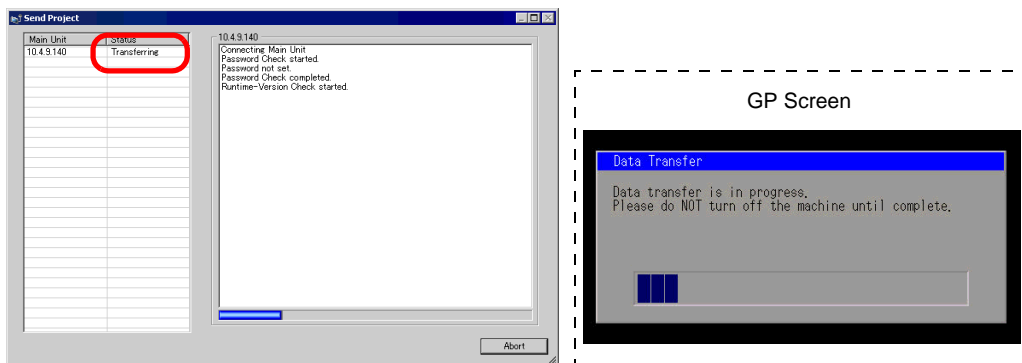
You can open the same dialog box by selecting GP-Pro EX's [Project (F)] menu - [Transfer Project (G)] option - [Transfer Settings (C)] command.

6 When [Send Project] is clicked, the [Select Main Unit] dialog box will open, and the IP address of the GP set at the factory will be displayed. Put a check mark next to the IP address and click [OK]. The transfer will begin. When multiple IP addresses are checked, the project will be sent to multiple GPs at once.



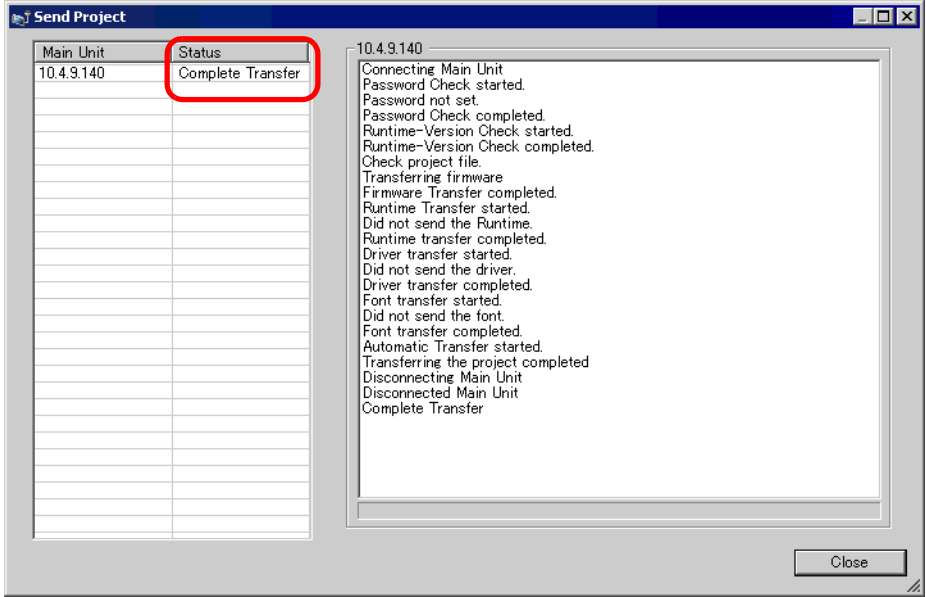
NOTE • If the GP's IP address and subnet mask have changed, they will not be retrieved. If they have changed, please set the updated IP address and subnet mask on the PC as well.

The following dialog box will be displayed during transfer and you can check the communication status.
(The GP switches into Transfer mode and communication with the device (PLC) is severed.)



7 When the transfer completes, the status displayed in the dialog box will change from [Transferring] to [Complete Transfer].
Click [Close] and the dialog box will close.

(The GP will be reset and the transferred project's screens will be displayed.)

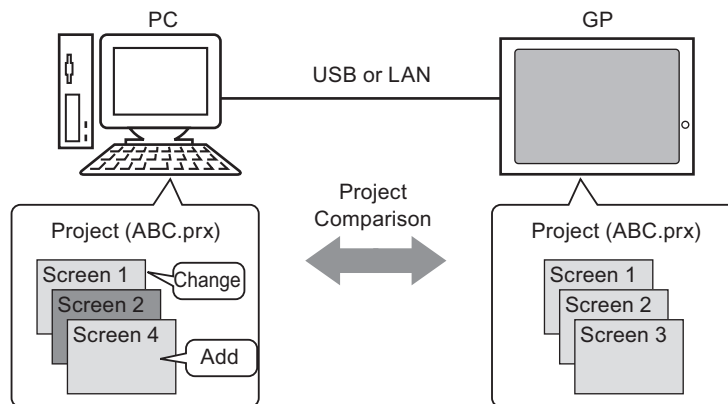


8 Close the dialog box to return to the Transfer Tool. Click [Close] and the Transfer Tool screen will close.

27.4 Confirming Projects' Changes Prior to Transfer (Comparison)

27.4.1 Details

Compares the currently open project in GP-Pro EX (or a selected project) and the project stored in the GP. This is useful for checking which screens have been updated before transferring data.



The following things can be observed from the comparison results:


- Screen numbers are the same, and screen contents are different. → Screen (s) updated
- Screen (s) exist only on the PC. → Screen (s) added
- Screen (s) exist only on the GP. → Screen (s) deleted

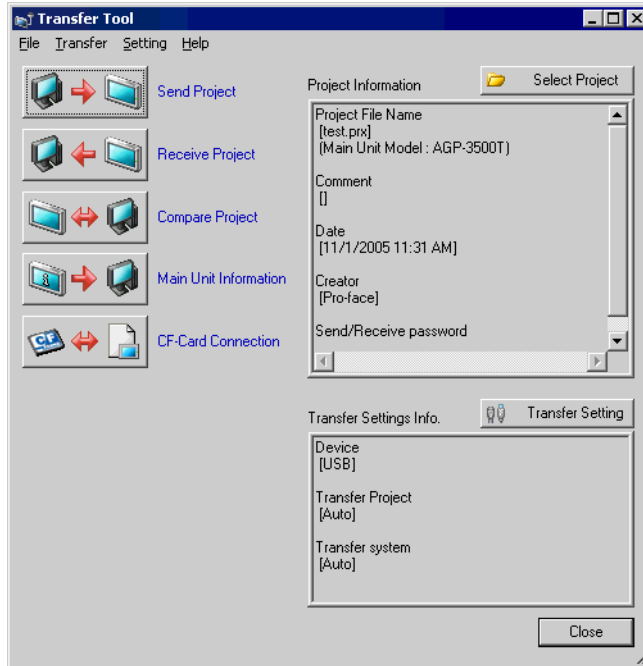
NOTE • Even when connected to an Ethernet (LAN), only one GP on the network can be selected for comparison.

27.4.2 Comparison Procedure

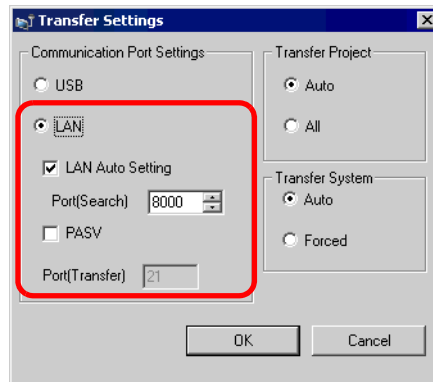
Compare the currently open project in GP-Pro EX and the project stored in the GP connected through LAN.

- NOTE** • Please refer to the settings guide for details.
 ☞ “27.7 Transfer Tool Settings Guide” (page 27-35)

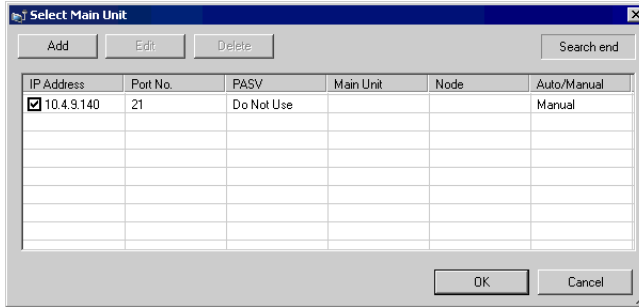
- 1 From GP-Pro EX's State Tool Bar, click the Transfer Project icon  and bring up the Transfer Tool.



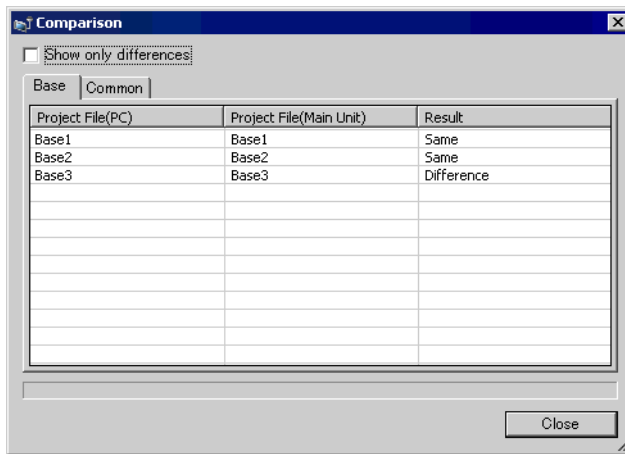
- 2 Click the [Transfer Setting] button and the following [Transfer Settings] dialog box will be displayed. Select [LAN] at [Communication Port Settings], put a check mark next to [LAN Auto Setting], and click [OK].



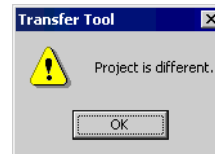
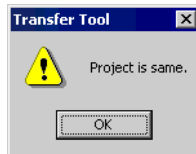
3 Put a check mark next to the IP address of the GP to read project data and click [OK].



4 The following [Comparison] dialog box will appear and display the results of the comparison by screen between the PC and GP.



- NOTE**
- Put a check mark next to the [Show only differences] box, and the comparison results will not show screens which are the [Same].
 - The following messages will be displayed when there are no differences between the two projects, and when the project to compare is a completely different file from the project in the GP, respectively.



5 After confirming the results, click [Close] and the dialog box will close.

27.5 Transferring Only Data to a CF-Card

27.5.1 Details

Data currently stored in the GP's CF-card can be checked on the PC using the Transfer Tool's [CF-Card Tool] feature.

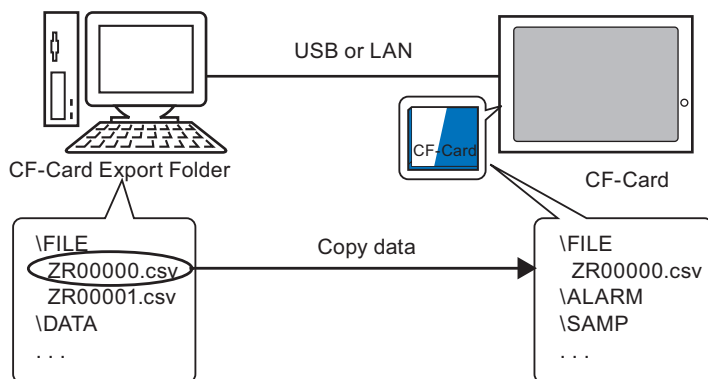
This feature is used to copy data between the PC's CF-card export folder and the GP's CF-card, to delete the data in a CF-card, or to change a file name.

- Data copy

You can copy data designated in the CF-card export folder (Recipe data and image data) to the GP's CF-card without transferring the project.

Also, you can copy data stored in the GP's CF-card (Alarm data and and sampling data) to a PC.

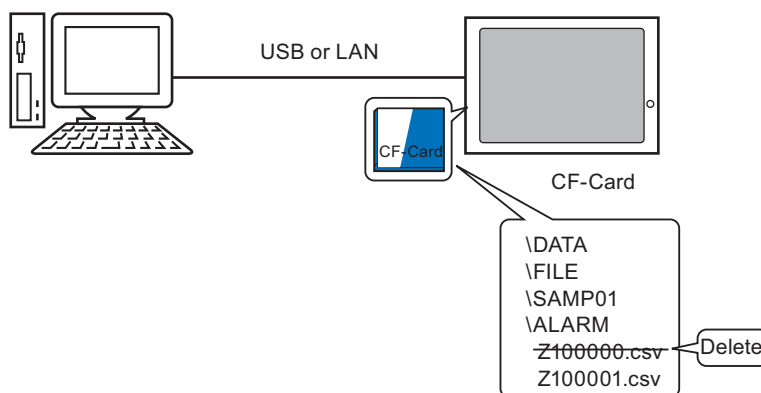
e.g.) Copy created Recipe data (ZR00000.csv) to the CF-card



- Delete CF-card data

You can delete data in the CF-card inserted in the GP.


e.g.) Delete CF-card Alarm data (Z100000.csv)

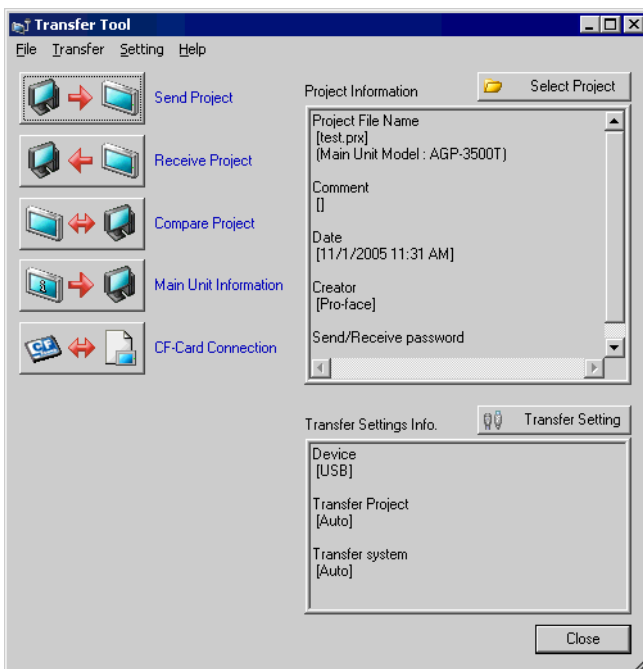


27.5.2 Transfer Procedure

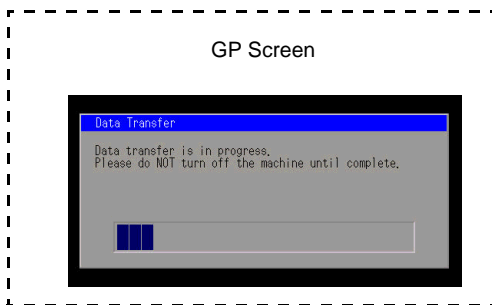
Copy Recipe data (ZR00000.csv) from the CF-card export folder to the GP's CF-card.

- NOTE**
- Please refer to the settings guide for details.
 ☞ “27.7 Transfer Tool Settings Guide” (page 27-35)

1 From GP-Pro EX's State Tool Bar, click the Transfer Project icon  and bring up the Transfer Tool.

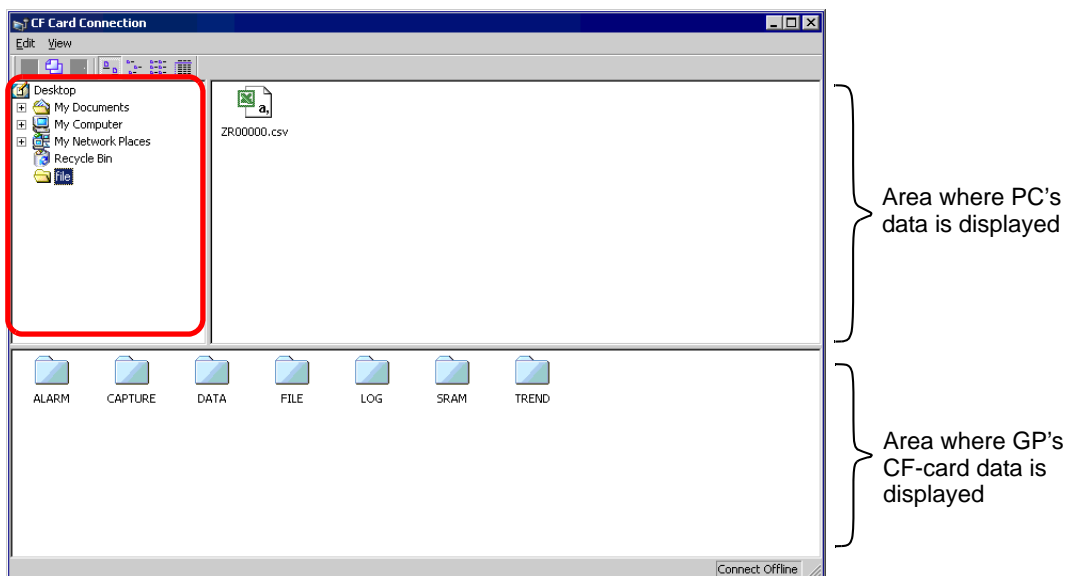


2 Click [CF-Card Connection]. The following dialog box will be displayed. Select [Connect Offline] and click [OK].
 (The GP switches into the transfer mode and communication with the device (PLC) is severed.)






- NOTE**
- If you select [Connect Online], you can only check the data information. You cannot copy, delete, or move the data from a CF-card.

- 3 When the CF-Card Tool screen starts, designate the CF-card export folder's [FILE] folder from the folder list on the left-hand side. The folder's data will appear on the right-hand side.



- 4 Select the Recipe data (ZR00000.csv) from the data displayed on the right-hand side, then drag it to the lower CF-card area.

NOTE • When the Recipe data (ZR00000.csv) is selected, you can copy it by clicking , and paste it to the CF-card area by clicking .

- 5 Close the CF-Card Tool with , and return to the Transfer Tool. Click [Close] and the Transfer Tool screen will close.

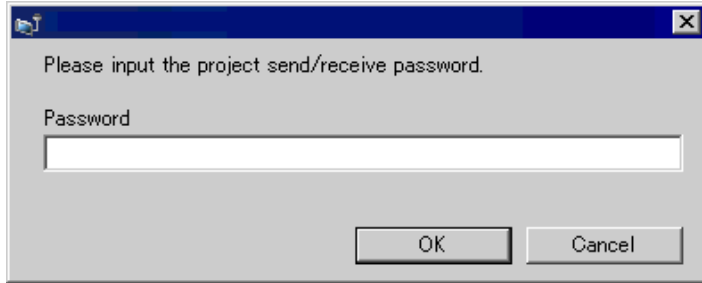
27.6 Permitting Transfer with Passwords

27.6.1 Details

You can protect the sending/receiving of projects by setting a password.

When sending/receiving projects, a Password Input Window is displayed, which prevents the transfer if passwords do not match.

This feature can be used as security measures, because only the specific persons can transfer data.



IMPORTANT

- Please do not forget the password as you will then be unable to transfer data.
- If a wrong password is inputted three times, the transfer will be cancelled.

NOTE

- If a Password Input window remains displayed for 10 minutes without any input or movement, an alarm message will appear. After another 10 minutes pass, a timeout will occur and the transfer will be forcibly cancelled.
 - As for the project to which a password has been set, you have to input the password when comparing it or transferring it to the CF-card as well.
-

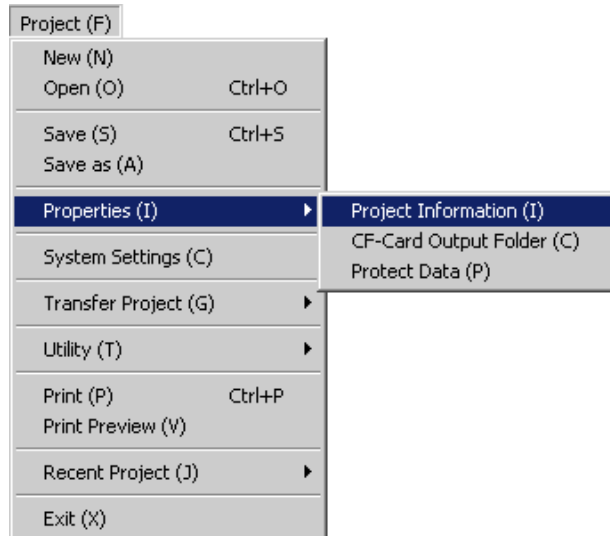
27.6.2 Setup Procedure

Set a password.

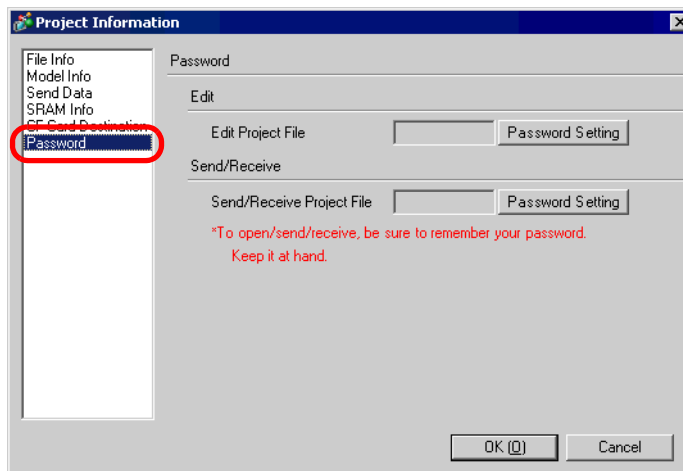
IMPORTANT • Please do not forget the password as you will then be unable to transfer data.

- 1 Select GP-Pro EX's [Project (F)] menu - [Properties (I)] option - [Project Information (I)] command.

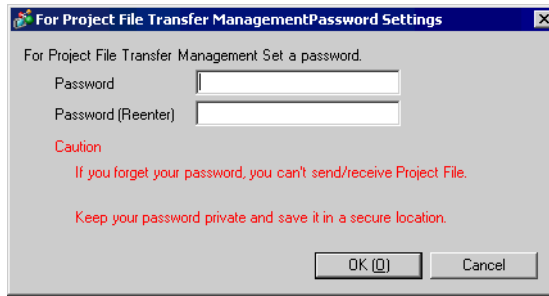
The [Project Information] dialog box will open up.



- 2 Select [Password] from the item list on the left-hand side of the [Project Information] dialog box.



- 3 Click [Password Setting] beside the [Send/Receive Project File]. The following dialog box will open.



- 4 Enter a password of up to 24 characters in [Password].
Confirm the password by entering the same input in [Password (Reenter)].



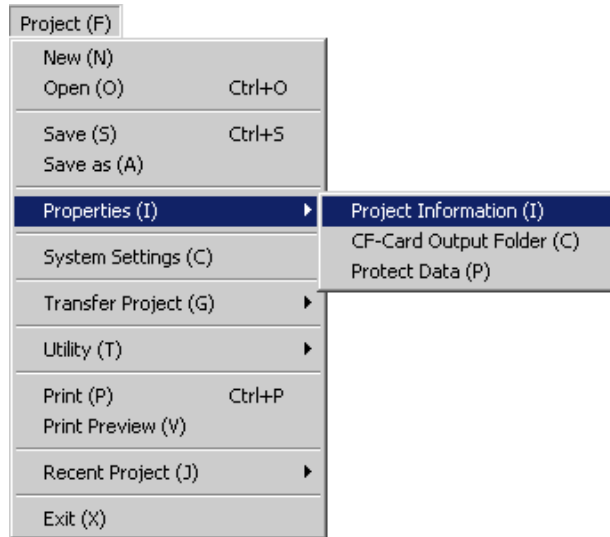
- 5 Click [OK] and the password settings are complete.

27.6.3 Releasing/Changing a Transfer Password

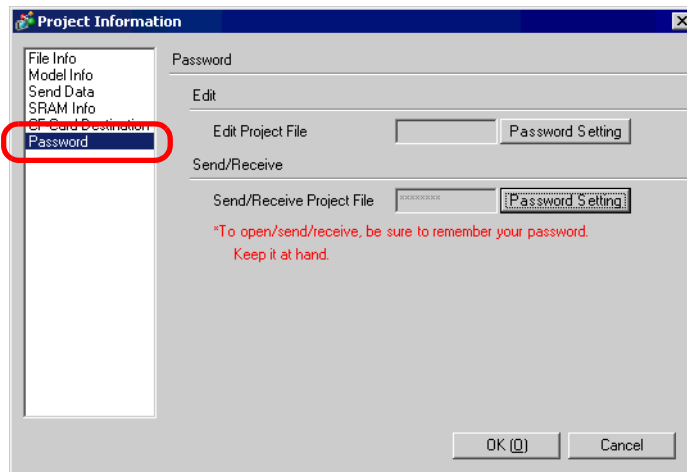
Releases a previously set password.

- 1 Select GP-Pro EX's [Project (F)] menu - [Properties (I)] option - [Project Information (I)] command.

The [Project Information] dialog box will open up.



- 2 Select [Password] from the item list on the left-hand side of the [Project Information] dialog box.



- 3 Click [Password Setting] beside the [Send/Receive Project File]. The following dialog box will open.



- 4 Enter the currently set password.




- 5 Leave [Password] and [Password (Reenter)] blank and click [OK]. The password will be released.

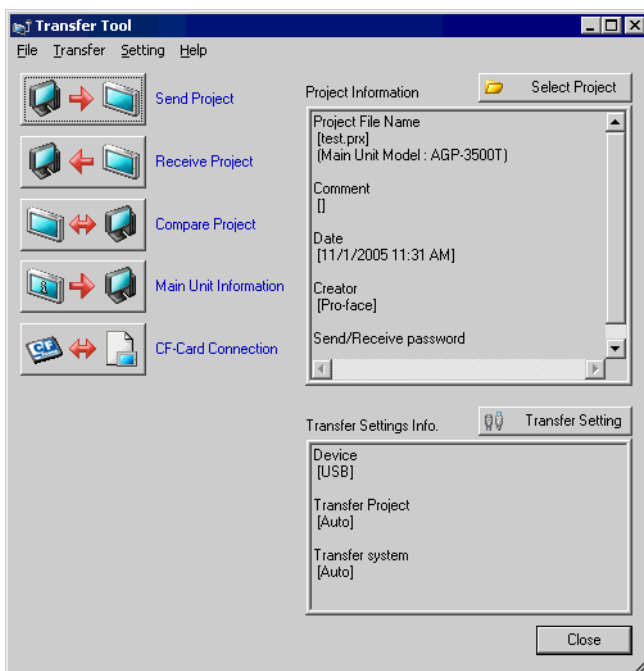


NOTE


- To change the password, enter the new password in [Password], enter the same input in [Password (Reenter)], and click [OK].
-



27.7 Transfer Tool Settings Guide

The tool used for transferring project data between a PC and the GP is called “Transfer Tool”. From GP-Pro EX’s State Tool Bar, click the [Transfer Project] icon  (or select the [Project (F)] menu - [Transfer Project (G)] option - [Other Transfer (E)] command to bring up the Transfer Tool.



NOTE

- The Transfer Tool can also be installed and used without installing GP-Pro EX. This is useful when transferring between the GP and a PC other than the one with the development environment (PC running GP-Pro EX).
 “27.7.4 Transferring when Only Transfer Tool is Installed” (page 27-41)

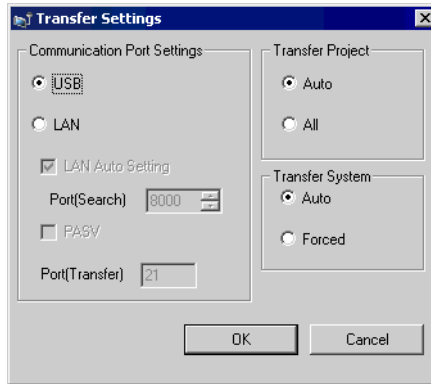
Setting	Description
Send Project	<p>Sends the currently open project in GP-Pro EX (or a project selected in [Select Project]) to the GP. For projects set with the CF-card export folder, the data in the CF-card export folder will be sent to the CF-card inserted in the GP.  “27.7.2 Sending” (page 27-39)</p> <p>IMPORTANT</p> <ul style="list-style-type: none"> • When a send occurs, data stored in GP’s backup SRAM will be deleted.
Receive Project	<p>Project data stored in a connected GP is received and saved to the PC in a designated location as a new project file (*.prx). For projects using the CF-card, all data on the CF-card inserted in the GP will also be received and saved in a designated location.  “27.7.3 Receiving” (page 27-40)</p>

Continued

Setting	Description
Compare Project	<p>Compares the currently open project in GP-Pro EX (or a project selected in [Select Project]) and the project stored in a connected GP, and displays the results.</p> <p>For project set with the CF-card export folder, the CF-card export folder data and the data on the CF-card inserted in the GP will also be compared.</p>
Main Unit Information	<p>Reads and displays the connected GP's system version, stored project information and screen information.</p> <p>System Version : Type and version of the main unit, version of the driver Project Information: Project file name, comment, date, creator Screen List : Each screen's number and type (Base screen, Window screen, and Common screen), comment, size, date</p>
CF-Card Connection	<p>Starts the CF-Card Tool. The operation process depends on the connection method as follows.</p> <div data-bbox="642 658 998 871" style="text-align: center;"> </div> <ul style="list-style-type: none"> • Connect Offline You can copy files between the CF-card export folder and a CF-card, and delete the files or change file names in a CF-card. While the CF-card tool is running, the GP switches into the transfer mode, communication with the device (PLC) will be severed. • Connect Online You can check the CF-card information (File Name, File Size, Date). While the CF-card tool is running, the GP communicates with the device (PLC). <p>NOTE</p> <ul style="list-style-type: none"> • After starting the CF-card tool, the connection with the GP will automatically be severed when 10 minutes have passed since the last process.
Select Project	<p>Opens a dialog box to select the project file (*.prx) you want to transfer to the GP.</p>
Project Information	<p>Displays information for the currently displayed project in GP-Pro EX (or a project selected in [Select Project]). Change to another project using [Select Project] and the display will update to that project's information.</p>
Transfer Setting	<p>Opens the [Transfer Settings] dialog box. Change the communication port (USB/LAN) or transfer method.</p> <p> "27.7.1 [Transfer Settings] Settings Guide" (page 27-37)</p>
Transfer Settings Info.	<p>Displays setting information about the currently set GP's communication port and transfer method. Modify the [Transfer Settings] and these contents will be updated.</p>

27.7.1 [Transfer Settings] Settings Guide

Select GP-Pro EX's [Project (F)] menu - [Transfer Project (G)] option - [Transfer Settings (C)] command or click [Transfer Settings] on the Transfer Tool to display the following dialog box.



Setting		Description
Communication Port Settings	USB	Designate this when using a USB transfer cable to transfer screens.
	LAN	Designate this when using Ethernet (LAN) to transfer screens.
	LAN Auto Setting	Designate whether or not to automatically search all GPs on the same network when [LAN] is selected.
	Port (Search)	When [LAN Auto Setting] is designated, set the port number during search.
	PASV	When [LAN] is selected, designate this if communication does not work due to the network security.
	Port (Transfer)	When [PASV] is designated, displays the port number that will be used.
Transfer Project	Auto	The project to be transferred is automatically compared with the currently stored project in the GP to see if they are the same. If they are the same project, only updated or added screen data will be sent. When sending a new project (none of the data is in the GP), or when a different project is stored in the GP, the whole project will be sent only after [OK] is selected for a displayed confirmation message.
	All	Sends the whole project to be transferred. Overwrites the existing project on the GP.

Continued

Setting		Description
Transfer System	Auto	<p>When sending a project, this function automatically compares the system version of GP-Pro EX and the GP. It then downloads any necessary system programs*1, protocol programs*2, or fonts*3 to the GP.</p> <p>Downloads will occur in the following cases:</p> <ul style="list-style-type: none"> • When the GP does not have any data loaded in it (when it is used for the first time after its purchase). • When the system program (Runtime) stored in the GP is older than the version in GP-Pro EX. • When old versions of protocol programs (drivers) are stored in the GP, or when project device/PLC settings have been added/changed. • When a font not in the GP was used during screen creation.
	Forced	<p>When sending a project, after formatting the GP, system programs*1, protocol programs*2, and fonts*3 are forced to download to the GP. Even if GP-Pro EX's system version is older than the GP's, the download will still occur.</p>

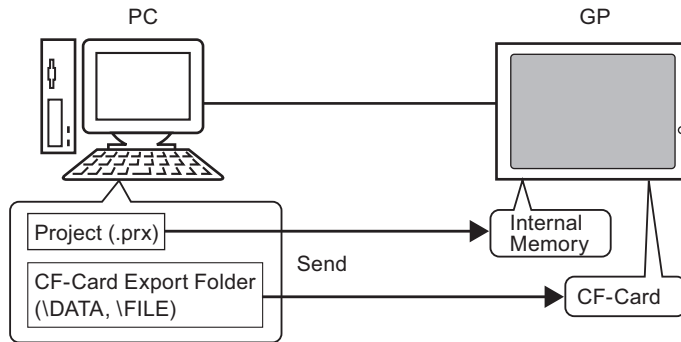
*1 Data used to operate the project on the GP.

*2 Data needed to communicate with the device/PLC to be used.

*3 Font data used by the project.

27.7.2 Sending

Writes the currently open project in GP-Pro EX (or a selected project) to the GP.
 If a project is set with the CF-card export folder, the data in the CF-card export folder (\DATA and \FILE) will be saved to the CF-card inserted in the GP.

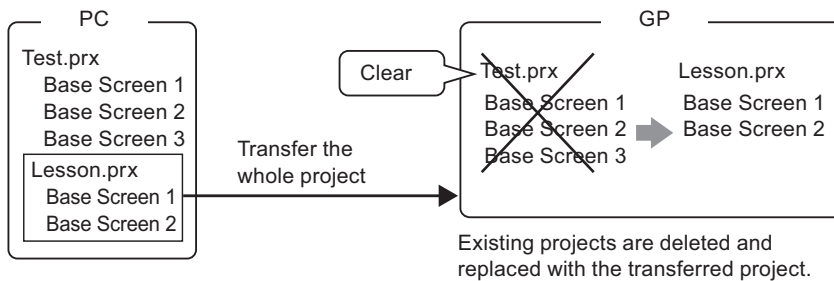


- NOTE**
- Only one project file (*.prx) can be saved in the GP.
 - When sending a project, the necessary system programs, protocol programs, and fonts will be automatically downloaded to the GP. For that reason, the transfer will take some time.
 - If the CF-card export folder contains the same file, the file will be overwritten during the transfer.

If the same project exists in the GP, only modified or added screens will be sent.
 When no project is in the GP or when a different project is stored in the GP, the whole project will be sent.

When a different project is stored in the GP

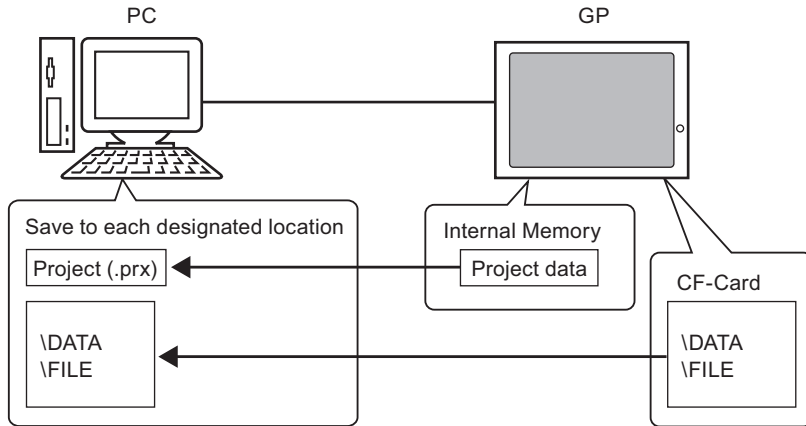
e.g.) Transfer “Lesson.prx” to the GP where “Test.prx” is stored.



27.7.3 Receiving

Project data currently stored in the GP is read and saved to a PC in a designated location as a new project file (*.prx).

If the project uses the CF-card export folder, the data contained in the CF-card (\DATA and \FILE) will also be saved to the designated location.



27.7.4 Transferring when Only Transfer Tool is Installed

When transferring between the GP and a PC other than the one with the development environment (PC running GP-Pro EX), transfer can be done by installing only the Transfer Tool.

Operating Systems that support Transfer Tool

- Windows 2000 Professional (SP3 or above)
- Windows XP
- Windows 98 (Second Edition or above)
- Windows Me

IMPORTANT

- A GP-Pro EX installation will not execute on a PC where Transfer Tool is installed. Please uninstall Transfer Tool and then install GP-Pro EX.
-

■ Installing Transfer Tool

- 1 Insert the GP-Pro EX's CD-ROM into the PC.
The following screen will appear.



- 2 Click [Transfer Tool].

NOTE

- The [Transfer Tool] will not function on any PC where GP-Pro EX is previously installed.
-

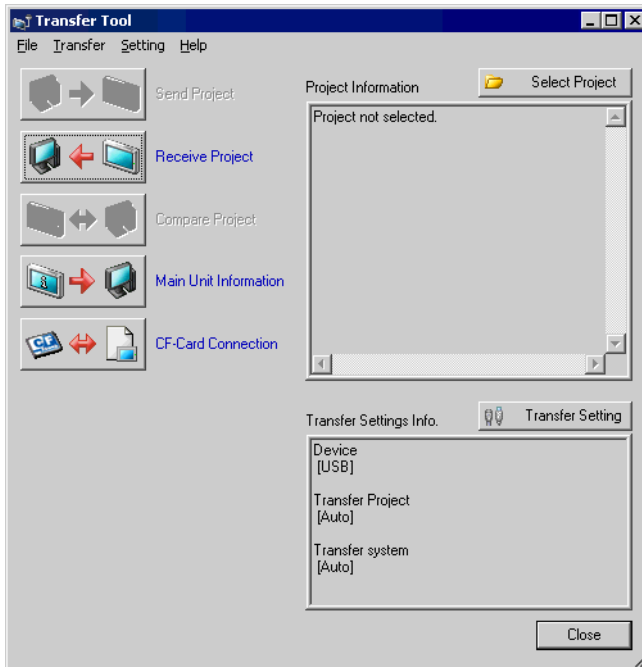
- 3 Designate a destination folder for the installation. The initial setting will be set to "C:\Program Files\Pro-face\GP-Pro EX".
- 4 The installation will begin. When completed, please restart the PC.

■ Using Transfer Tools: Startup to Transfer

1 Select the Start menu - [Programs] - [Pro-face] - [GP-Pro EX] - [Transfer Tool].



2 Transfer Tool will start up.



3 To receive a project from the GP, click [Receive Project].

To send a project or compare projects, first choose a project with [Select Project].

27.8 Restrictions

27.8.1 Restrictions for Transfer

- When sending a project, data stored in GP's backup SRAM (Sampling data, etc.) will be deleted.
- When sending a project, the necessary system programs, protocol programs, and fonts will be automatically downloaded to the GP. For that reason, the transfer will take some time.

Downloads will occur in the following cases:

- When the GP does not have any data loaded in it (when it is used for the first time after its purchase).
- When the system program (Runtime) stored in the GP is older than the version in GP-Pro EX.
- When old versions of protocol programs (drivers) are stored in the GP, or when project device/PLC settings have been added/changed.
- When a font not in the GP was used during screen creation.

When a download occurs, the GP is reset, and after starting up the transferred screens will appear.

- When the GP unit enters offline mode, the project cannot be transferred.
- While a project is being sent, the GP will switch to Transfer mode. During that time communication with all devices (PLCs) is cut. This is the same as during offline mode.
- When an abnormality is found during the initialization of the system program stored in the GP (Runtime), an error message is displayed on the GP. In such a case, you need to transfer the project file again.

27.8.2 Restrictions for Transfer Using Ethernet

- You can transfer data between the GP and a PC on a different network by using a router, etc. However, there are cases where the PC cannot automatically search the GP on a different network.
- For a PC that is using 2 or more LAN cards, the desired GP may not be acquired even if you automatically acquire the IP addresses. This happens because the OS searches the GP connected to the LAN card that was previously found. Click [Add] on the [Select Main Unit] dialog box and manually set the IP address of the GP you wish to transfer to.
- When Microsoft Windows XP Service Pack 2 is used and the Transfer Tool starts, a message appears to show that the operation is blocked by the Windows firewall feature. You can continue the transfer process by canceling the blocking. However, if you transfer data to two or more GP units, you need to select [PASV] for [Communication Port Settings] in the [Transfer Settings] dialog box, or disable the firewall feature.

27.8.3 Restrictions for CF-Card Tool

- When the GP unit enters offline mode, CF-card tool cannot be used.
- There is a limit to the frequency that data can be rewritten to the CF-card. (500 KB of data can be rewritten around 100,000 times) Please make sure to backup to another media.
- After the CF-card tool starts, when 5 minutes pass with no input, a warning message will appear. When another 5 minutes passes with no input after the message display, the connection to the GP will automatically be severed.

Memo