

29



Adjusting the Time and Screensaver

This chapter explains basic features of “Adjusting the Time and Screensaver” in GP-Pro EX and basic ways of changing the time data and turning OFF the screen display.

Please start by reading “29.1 Settings Menu” (page 29-2) and then turn to the corresponding page.

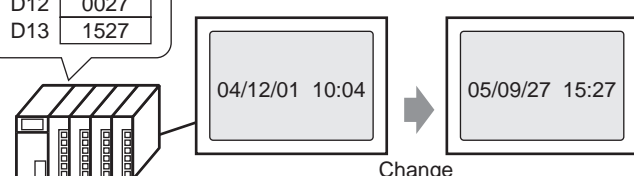
29.1	Settings Menu	29-2
29.2	Adjusting the Time	29-3
29.3	Preventing Images from Burning into the Screen	29-6
29.4	Restrictions	29-10

29.1 Settings Menu

Adjusting the Time

Set a new data to the device/PLC.

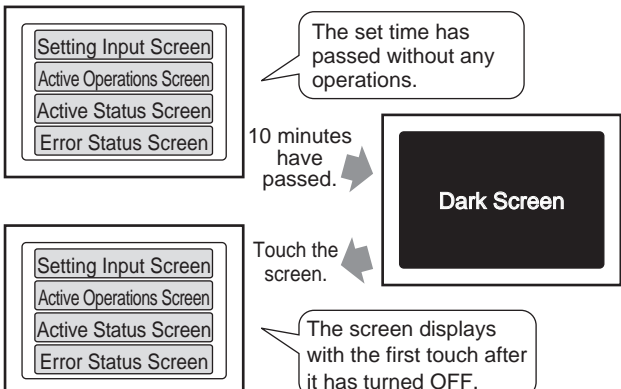
D10	8005
D11	0009
D12	0027
D13	1527



☞ Setup Procedure (page 29-4)

☞ Details (page 29-3)

Preventing Images from Burning into the Screen

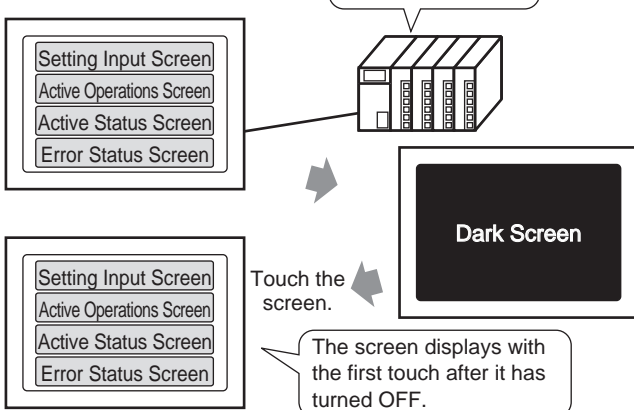


Automatically turns OFF the screen display if there is no screen operation for a fixed time.

☞ Setup Procedure (page 29-6)

Turn OFF the screen display from the device/PLC.

D9	FFFF
----	------

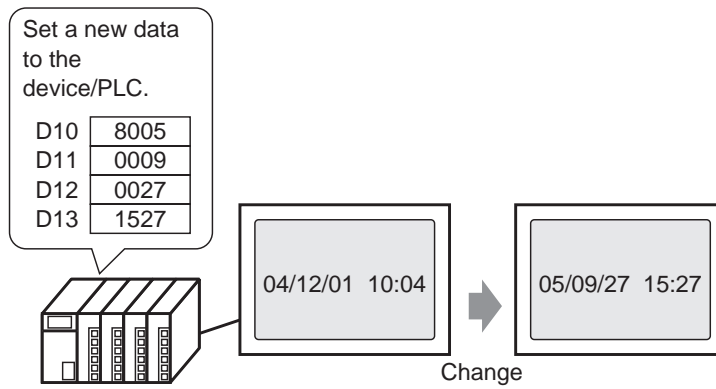


Turns OFF the GP screen display from a device/PLC.

☞ Setup Procedure (page 29-8)

29.2 Adjusting the Time

29.2.1 Details

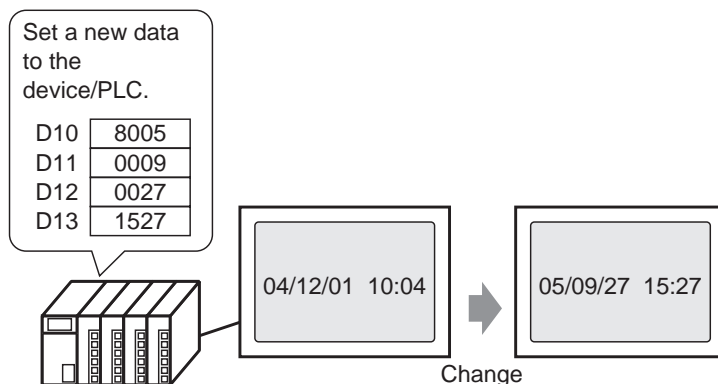


Corrects the GP main unit's clock data (BCD) from a device/PLC.

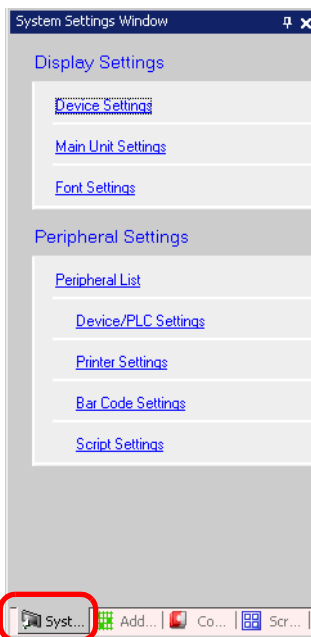
29.2.2 Setup Procedure

NOTE

- For more details, refer to the settings guide.
 ☞ “6.13.6 [System Settings Window] Setting Guide ◆ System Area Settings” (page 6-110)



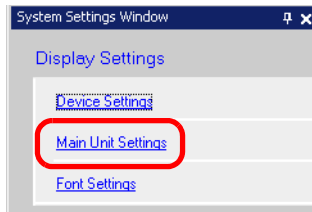
1 Select the [System Settings Window] tab to open the [System Settings Window].



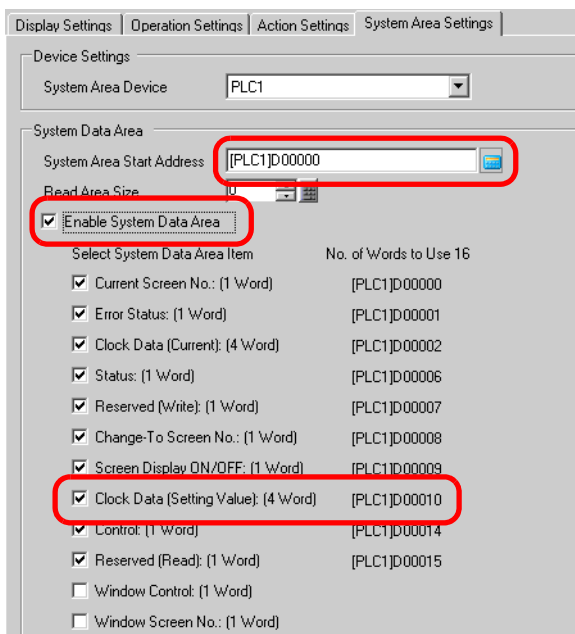
NOTE

- If the [System Settings Window] tab is not displayed in the Work Space, select the [View (V)] menu - [Work Space (W)] option - [System Settings Window (S)] command.

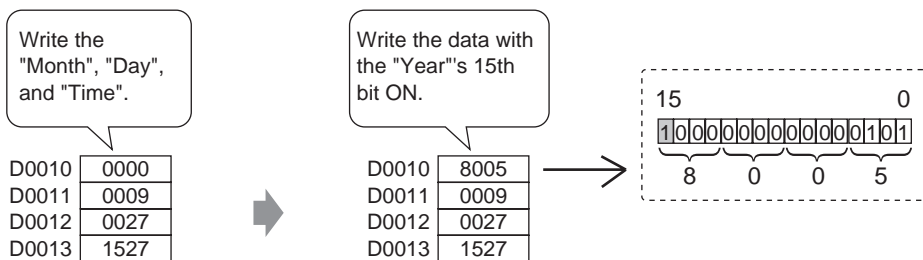
2 Select [Main Unit Settings] from [Display Settings].



3 Select the [System Area Settings] tab, set the [System Area Start Address], and put a check mark next to the [Enable System Data Area] box. Then confirm that [Clock Data (Setting Value): (4 Words)] is selected.



4 Write clock data (e.g.: 27.09.05 15:27) to the address displayed in the “Clock Data (Setting Value): (4 Words)” (e.g.: D0010-D0013) with BCD. Clock data is rewritten if the data rewrite flag (e.g.: D0010’s 15th bit) changes (OFF to ON or ON to OFF). The procedure for writing data is as follows.

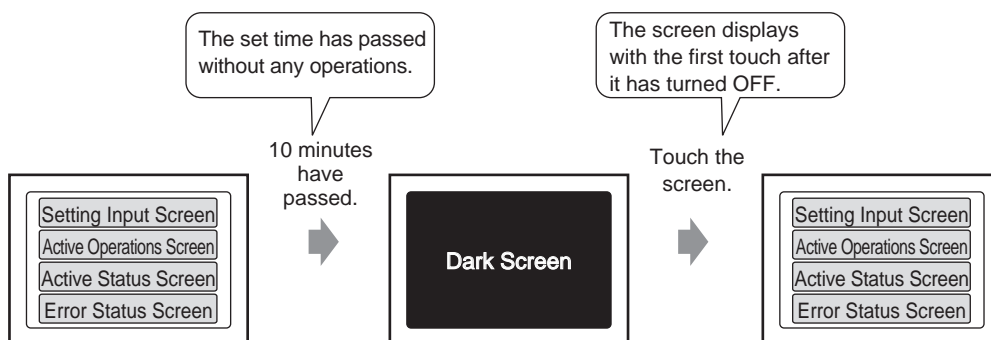


- NOTE**
- When the 15th bit is ON, write the data to turn OFF the 15th bit and time is updated.
 - You cannot change the “Second” data. It is reset to “0” when the clock data are rewritten.

29.3 Preventing Images from Burning into the Screen

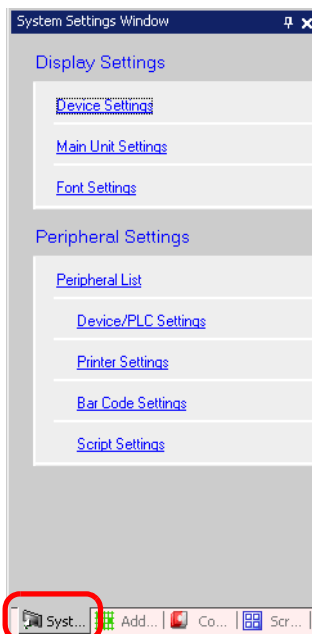
29.3.1 Setting Procedure to Turn OFF the Screen Display after a Fixed Time

- NOTE** • For more details, refer to the settings guide.
 ☞ “6.13.6 [System Settings Window] Setting Guide ◆ Display Settings” (page 6-90)



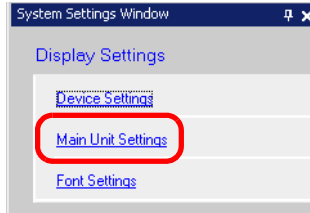
Automatically turns OFF the screen display if there is no screen operation for a fixed time.

- 1 Select the [System Settings Window] tab to open the [System Settings Window].

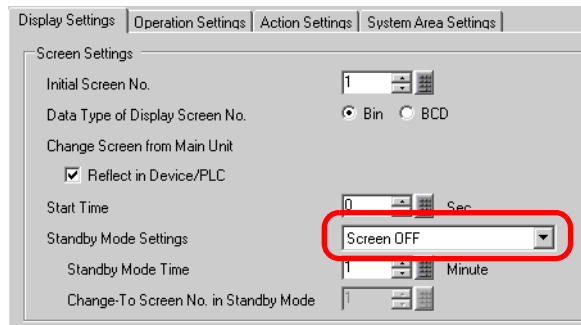


- NOTE** • If the [System Settings Window] tab is not displayed in the Work Space, select the [View (V)] menu - [Work Space (W)] option - [System Settings Window (S)] command.

2 Select [Main Unit Settings] from [Display Settings].



3 On the [Display Settings] tab, set the [Standby Mode Settings] (e.g.: Screen OFF) in [Screen Settings].



4 Set the setting time (e.g.: 10) in [Standby Mode Time].

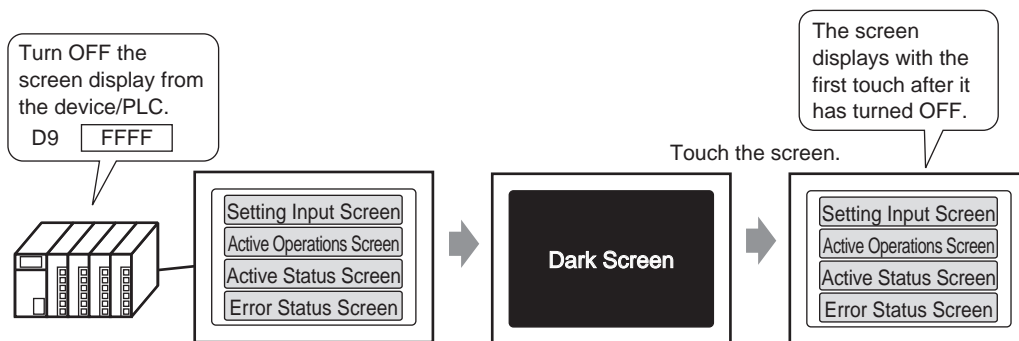


NOTE

- If there is no screen operation or alarm occurrence (banner) for the time set in [Standby Mode Time], the screen display turns OFF. When the screen displays again, touch the screen once if the display is off.

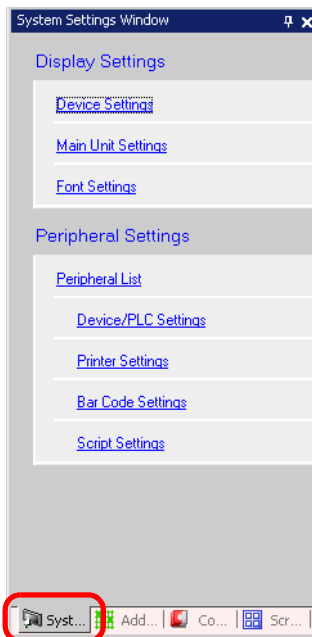
29.3.2 Setting Procedure to Turn OFF the Screen Display from a Device/PLC

- NOTE** • For more details, refer to the settings guide.
 ☞ “6.13.6 [System Settings Window] Setting Guide ◆ System Area Settings” (page 6-110)



Turns OFF the GP screen display from a device/PLC.

- 1 Select the [System Settings Window] tab to open the [System Settings Window].

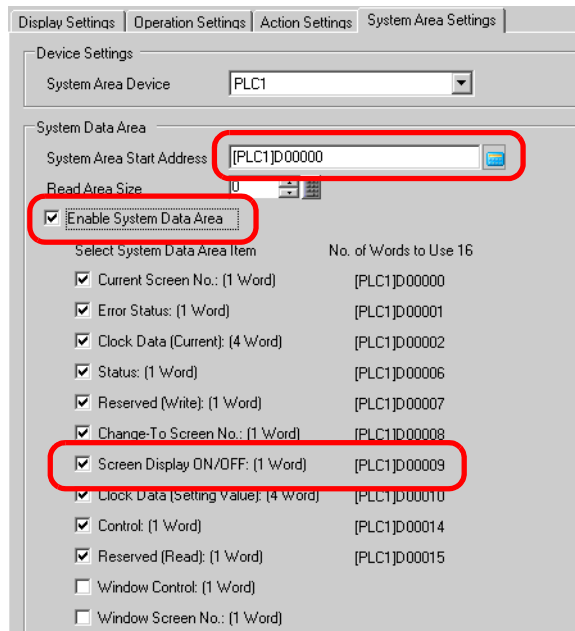


- NOTE** • If the [System Settings Window] tab is not displayed in the Work Space, select the [View (V)] menu - [Work Space (W)] option - [System Settings Window (S)] command.

2 Select [Main Unit Settings] from [Display Settings].



3 Select the [System Area Settings] tab, set the [System Area Start Address], and put a check mark next to the [Enable System Data Area] box. Then confirm that [Screen Display ON/OFF: (1 Word)] is selected.



4 Write "FFFFh" to the address displayed in [Screen Display ON/OFF: (1 Word)] (e.g.: D0009) and the GP's screen display turns OFF.

NOTE • To display a screen whose screen display is OFF, touch the screen once.

29.4 Restrictions

29.4.1 Restrictions for Adjusting the Clock

- Clock data is rewritten if the data rewrite flag changes (OFF to ON or ON to OFF). You cannot change the “Second” data. It is reset to “0” when the clock data are rewritten. e.g.) 16.10.05 21:57
The current data in the [Clock Data (Setting Value)] address is 0000.
Write the “Month”, “Day”, and “Time” into the following addresses.
 - Write 0010 to [Clock Data (Setting Value)] + 1.
 - Write 0016 to [Clock Data (Setting Value)] + 2.
 - Write 2157 to [Clock Data (Setting Value)] + 3.In the [Clock Data (Setting Value)] addresses, turn ON the “Year”’s 15th bit (data 8005) and the clock data will be rewritten.
- The clock data’s [Data Type] is set to BCD.
- When setting the clock data using the memory link method, use the five addresses 0004 to 0008 to directly store the data (year, month, day, hour, and minute) respectively.

29.4.2 Restrictions for Turning OFF the Screen

- With the [Standby Mode Time] settings, if the [Screen Display ON/OFF: (1 Word)] address data is “0000h” and none of the following actions occur for the period set in the setting time, the display disappears.
 1. Changing the screen by touch or from the device/PLC
 2. Operating the screen by touch
 3. Displaying an alarm message (banner)
 4. Displaying an error message
- Setting the standby mode time within the range of “1 to 255”.
- The first touch input after the screen display turns OFF will turn the screen display back ON.
- When turning OFF the screen display from a device (PLC), the screen display disappears if the value “FFFFh” is stored in the address set to [Screen Display ON/OFF: (1 Word)]. The screen is displayed when the value is “0h”. Values other than “FFFFh” and “0h” are reserved.