

**Pro-face**

**Windows XP Embedded**

**User Manual**

# Preface

Thank you for purchasing Pro-face's Windows XP Embedded (Hereafter referred to as the "XPE").

Before using the XPE, be sure to read this manual thoroughly to familiarize yourself with the XPE's operation procedures and functions.

## NOTE

1. It is forbidden to copy the contents of this manual in whole, or in part, without the permission of the Digital Electronics Corporation.
2. The information in this manual is subject to change without notice.
3. This manual was written with care; however, if you should find any error or omissions, please contact Digital Electronics Corporation and inform them of your findings.
4. Regardless of the above clause, Digital Electronics Corporation shall not be held responsible for any damages or third-party claims for damages or losses resulting from the use of this product.

© Copyright 2005 Digital Electronics Corporation. All rights reserved.

Windows is a registered trademark of Microsoft Corporation.

All other trademarks and registered trademarks are property of their respective owners.

## TRADEMARK RIGHTS

The company names and product names used in this manual are the trade names, trademarks (including registered trademarks), and service marks of their respective companies. This product omits individual descriptions of each of these rights.

Trademark / Tradename	Right Holder
Microsoft, Windows	Microsoft, U.S.
Pro-face	Digital Electronics Corporation (in Japan and other countries)
Adobe	Adobe Systems Incorporated
Flash, Shockwave	Macromedia, Inc.

The following terms differ from the abovementioned trade names and trademarks.



Term used in this manual	Formal Trademark or Tradename
Windows XP OS	Microsoft <sup>®</sup> Windows <sup>®</sup> XP operating system
Adobe Reader	Adobe <sup>®</sup> Reader <sup>®</sup>
Flash Player	Macromedia <sup>®</sup> Flash <sup>®</sup> Player
Shockwave Player	Macromedia <sup>®</sup> Shockwave <sup>®</sup> Player
Windows Media Player	Windows Media <sup>®</sup> Player

## How to use this manual

This manual describes Windows XP Embedded 's (Hereafter referred to as "XPE") feature and setup method. For the hardware-related instructions for use and installation method so on, refer to the instruction guide contained in this package or PS Series User Manual. When using XPE, it's necessary to replace the software part described in the PS Series User Manual with this manual.

## Information Symbols

This manual uses the following icons:

	Indicates a warning or a product limitation. Be sure to follow the instructions given with this icon to insure the safe operation of the XPE.
	Contains additional or useful information.
*	Indicates terms or items that require further explanation. See the footnote on that page.
(1) (2)	Indicates steps used to accomplish a given task. Be sure to follow these steps in the order they are written.
XPE	Refers collectively to the Windows XP Embedded.

## Package Contents

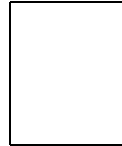
The following items exclusively for XPE are included in the package. Before using the XPE, please confirm that all items listed here are present.

Windows XP Embedded

User Manual CD (1)



End User License Agreement (EULA)(1)



About User Manual of the Windows XP Embedded(1)



---

**NOTE**

- This unit has been carefully packed, with special attention to quality. However, should you find anything damaged or missing, please contact your local XPE distributor immediately.
  - The manual of the newest version and the update version of Driver and Utility can be downloaded from the Digital Electronics Corporation's homepage.  
<http://www.pro-face.com/>
-

# Table of Contents

Preface .....	1
TRADEMARK RIGHTS .....	2
How to use this manual .....	3
Information Symbols.....	3
Package Contents .....	4
Table of Contents .....	5

## Chapter1 Windows XP Embedded

1 Feature .....	1-2
2 List of Functions .....	1-4
3 Write Filter .....	1-5
3.1 Write Filter Settings Procedure .....	1-8
4 Security ID .....	1-9
4.1 Changing Security ID procedure .....	1-9
5 RAM Disk .....	1-11
5.1 RAM Disk Settings Procedure .....	1-11
6 Unit Settings .....	1-14
6.1 Control Panel Function .....	1-14
6.2 Backlight Brightness .....	1-15
6.3 KeyClick .....	1-15
6.4 UPDD .....	1-17
6.5 Delete Language .....	1-17
6.6 Windows Media Player .....	1-19
6.7 Java Runtime .....	1-20
6.8 Flash Player and Shokwave Player (Macromedia Co.) .....	1-21
7 Shut Down .....	1-22
7.1 Shut Down for the time when combined with HDD .....	1-22
8 Recovery .....	1-25
9 Restrictions.....	1-26

## ChapterA Appendices

1 [IN-fINITY soft KeyClick32] Agreement .....	A-2
2 [DMC Corporation Mouse Emulation Software] SLA.....	A-3

# 1

# Windows XP Embedded

1	Feature.....	1-2
2	List of Functions.....	1-4
3	Write Filter.....	1-5
4	Security ID .....	1-9
5	RAM Disk .....	1-11
6	Unit Settings.....	1-14
7	Shut Down .....	1-22
8	Recovery.....	1-25
9	Restrictions .....	1-26

# 1 Feature

The XPE is the component version of the Windows XP operating system and is the operating system which has the discriminative function about an embedded device such as the Write Filter.

The XPE made by Pro-face has the following features.

- Write Filter Function

This unit has the Write Filter function to prevent writing into CF card.

Be sure the Write Filter is effective to decrease the number of times of access to CF card. And if the Write Filter function is effective, the operation for shutdown is unnecessary.

 "3 Write Filter"(Page.1-5)

**NOTE**

- When data is written in the devices (except CF card) that are not protected by the Write Filter, turning off the power may cause damage of the data. Therefore, it's necessary to confirm that no data is written in another device and turn off the power. The following will describe how to confirm that.

<How to confirm>

Hard Disk : Check this unit's front LED

USB Device/PCMCIA : Confirm that no data is written on users' applications.

\*When you cannot confirm it with the method above, please remove the hardware securely.

- Supporting Multi-language Function (Only for Multi-language XPE)

Multilanguage such as English, Spanish, French, German, Italian,Russian,Chinese, and Taiwanies is supported.

**NOTE**

- Japanese XPE does not have this function.
- For deleting unnecessary languages, refer to [6.5 Delete Language]


 "6.5 Delete Language"(Page.1-17)

- Supporting Combination Use with HDD Function

Combining with HDD can extend the data area and therefore a large-sized application can be used.

**NOTE**

- PS-370xA Series does not have this function.
- To use the XPE in combination with HDD and make the operation for shutdown unnecessary, it's necessary to disable the Write Cache. Refer to [7.1 Shut Down for the time when combined with HDD].

 "7.1 Shut Down for the time when combined with HDD"(Page.1-22)



- Backlight Screen Saver Function  
It's the screen saver function that turns ON/OFF the backlight and can extend the backlight's lifetime.

**NOTE** • PS-2000B does not have this function.

- Installed System Monitor  
It enables Error Monitor of the system.

**NOTE** • For details, refer to PS Series User Manual.

- Supporting Touch Panel Driver (UPDD)  
The input operation like a mouse is possible with the touch operation.

**NOTE** • The UPDD is not installed in PS-2000B before shipment. Please install it if needed.

☞ "6.4 UPDD"(Page.1-17)

- Installed KeyClick  
It displays the keyboard on a screen and enables the key input from the touch panel.

**NOTE** • It's supported only in the case of Japanese or English.  
When operating the key input from the touch panel in the language except the above mentioned, use Microsoft's Screen Keyboard.

- It cannot be used for password input when starting this unit.

☞ "6.3 KeyClick"(Page.1-15)

**IMPORTANT** • When installing applications, be aware of CF card's available area as shown below.

<Before shipment>

Japanese Version About 430MB

Multilanguage Version About 150MB

\*When using the Multilanguage Version, if the available area is insufficient, delete unnecessary languages.

☞ "6.5 Delete Language"(Page.1-17)

## 2 List of Functions

The main installed applications before shipment are shown in the table below.

applications	Details
Internet Explorer 6	Web Browser (Microsoft.Corp.)
Japanese IME <sup>*1</sup>	Conversion software for Japanese input.
.NET FrameWork	Execution Environment compatible with Microsoft.NET.
Control Panel	Customize a computer. Add new hardwares, add / remove programs, change the screen display and start various operations.
Accessory	Microsoft's Notepad, Paint, On-Screen Keyboard, Command Prompt, and Hyper Terminal are installed.
Backlight Brightness <sup>*2</sup>	Adjusts brightness of a screen.
Keyclick	Displays the keyboard on a screen and operates the key input.Supports Japanese and English only.
UPDD <sup>*3</sup>	Mouse emulation software.
EFW Setting Tool	Sets the Write Filter function.
System Monitor	Monitors errors of the system.

\*1 Multi-language XPE does not have this function.

\*2 PS-2000B doesn't have this function.

\*3 UPDD is not installed in PS-2000B before shipment.

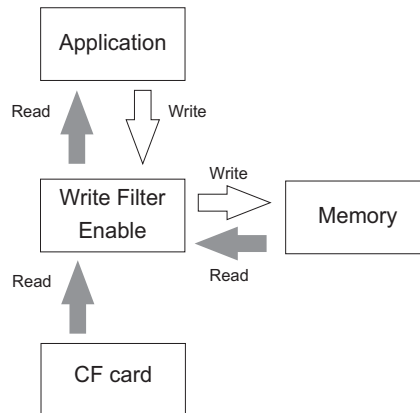
### 3 Write Filter

XPE has the Write Filter (The function to avoid writing into HDD or Flash Memory). When the Write Filter is effective, it prevents writing into CF card.

- NOTE**
- It's not applied to the CF card for writing data, which is used for PCMCIA.

When the Write Filter is effective, the access to CF card is as shown below.

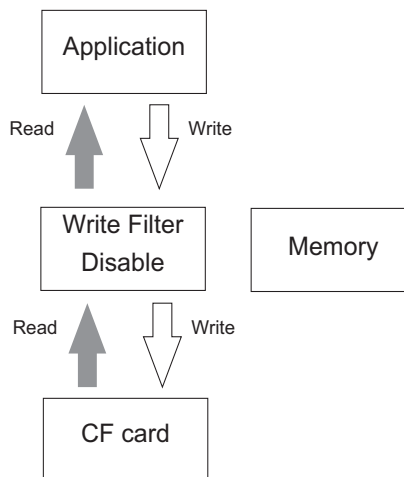
- Read: Direct access to CF card
- Write: Access to the memory



- NOTE**
- When the added or changed data is on the memory, the data on the memory precedes.

When the Write Filter is invalid, the access to CF card is as shown below.

- Read: Direct access to CF card
- Write: Direct access to CF card

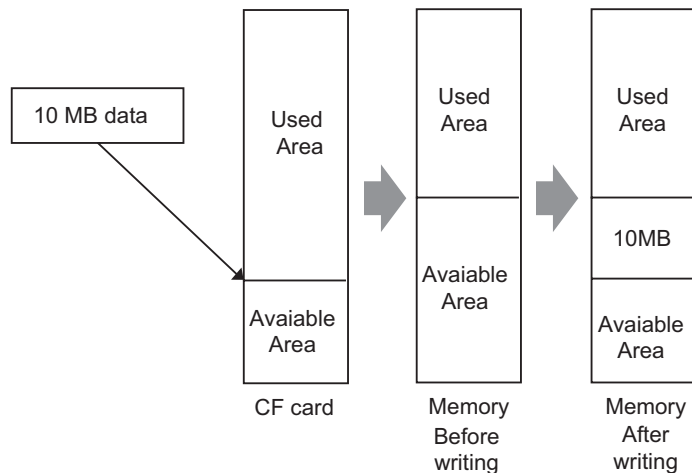


Turning OFF the power at the time of writing into CF card leads to data damage. When using this unit, use it with the Write Filter effective. Prevention of writing into the CF card is expected to prevent being damaged or prevent the CF card life cycle (Reference: 0°C - 70°C , Writing/Delete Times: 300,000 times per block) from declining as well.

## Write Filter-related important notes

- If the Write Filter is effective, when writing to the CF card, data is written on the memory. However, even if the written information is deleted in the CF card, the information on the memory cannot be deleted. To delete the information on the memory, it's necessary to restart the system.
- Even if the CF card has a available area, when the memory has no available area, writing data causes the disk's insufficient available area error. And when the memory has a available area and the CF card has no available area, the Writing Error occurs and data cannot be written. When writing data, be sure to check available areas of the CF card and the memory.

Ex.) With the Write Filter effective, when writing 10-MB data,



<Conditions to write 10-MB data>

- The appearing available area in the CF card is 10 MB or more
- The memory's available area: 10MB + memory's available area necessary for OS to operate properly.

<State after 10-MB data is written>

- The appearing available area in the CF card decreases by 10 MB.
- The available area in the memory decreases by 10 MB.

<State after 10-MB data is deleted>

- The appearing available area in the CF card returns to the state before 10-MB data is written.  
The available area in the memory does not change from the state when data is written.

- Writing a lot of data into the Write Filter area decreases the available memory. Therefore, during work, it's necessary to refrain from writing into the CF card as much as possible.

In order to solve this problem, RAM Disk is installed in XPE made by Pro-face.

In the RAM Disk, the area for the specified size can be used as a volatile disk area. Therefore, that area can be used again and again when writing directly into the memory area whether the Write Filter is effective or not. If the RAM Disk becomes a data storage place like Internet Explorer's Cache, it's possible to get the system to operate without changing the available memory volume for a long time. And logging data etc such as users' applications is one of the data that can use the RAM Disk effectively. For details and settings of the RAM Disk, refer to [5 RAM Disk].

 "5 RAM Disk"(Page.1-11)

- To make each setting, add a driver, or change Registry, be sure to disable the Write Filter setting. If the Write Filter setting is enabled, the setting information to OS and so on will be all canceled when OS restarts. When changing the setting, be sure to disable the Write Filter setting.

### 3.1 Write Filter Settings Procedure

When setting the Write Filter, use “EFWSettingTool. exe”. This tool has the following function.

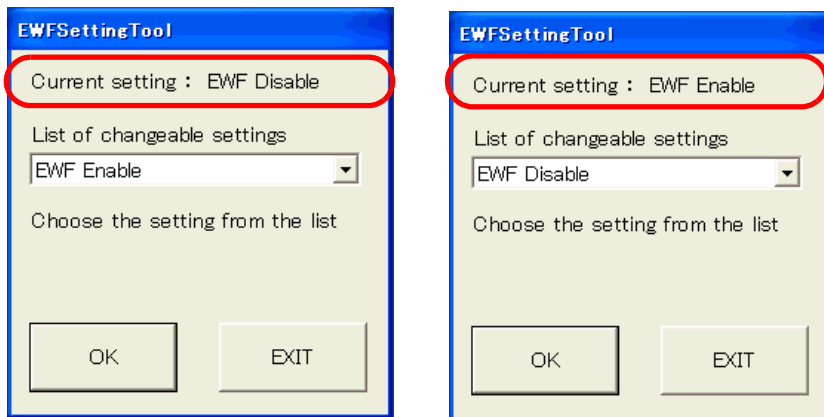
- The Write Filter invalid (EWF Disable).
- The Write Filter effective(EWF Enable).
- Change of security ID.

The following shows the setup procedures of the Write Filter.

- (1) Select [Designate file name and run] from the [Start] menu and start the following executable file.

C:\Proface\EWFSettingTool\EWFSettingTool.exe

- (2) Confirm current setting on the display screen.



- (3) Choose the setting from the list.
- (4) Click [OK] and end.

\* Restart and the contents of change becomes effective.

#### NOTE

- Be sure the Write Filter is invalid to change the security ID.
- Only when you copy the CF card for starting and install the application program in more than one unit, Changing of security ID becomes effective.
- For the information of the security ID, refer to the “4 Security ID”.

☞ "4 Security ID"(Page.1-9)

#### IMPORTANT

- You have to log on as administrator in order to set the Write Filter.

## 4 Security ID

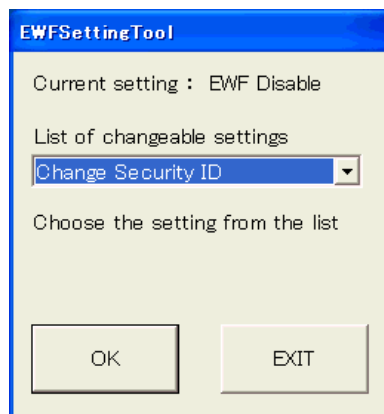
Security ID is the ID proper to each terminal. If the ID of each terminal is the same, all terminals are regarded as the same terminal on the Microsoft Network. When copying a CF card and making a master CF card for shipping after installing application Programs, use the tool "EWF SettingTool. exe" and change the security ID.

**NOTE** • Before changing the security ID, disable the Write Filter setting. When the Write Filter is effective, the change is not reflected.

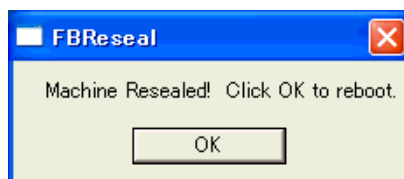
☞ "3.1 Write Filter Settings Procedure"(Page.1-8)

### 4.1 Changing Security ID procedure

- (1) Start "EWFSettingTool. exe" and select "Change Security ID" and click [ok]. (Executable file is "C:\Proface\EWFSettingTool\EWFSettingTool.exe".)



- (2) After a while, the following message is displayed.



- (3) Click [OK] and the unit is rebooted automatically.

- IMPORTANT** • At the time of next starting, the security ID is renewed. When making a master CF card, turn off the power supply while the screen for BIOS is displayed after restart at (3). After that, reproduce CF cards.
- By setting the CF card reproduced to each unit and starting the unit, it is possible to generate the proper security ID. When the unit is rebooted at the screen for BIOS without turning off the power supply, it is necessary to generate security it again.

(4) The following message is displayed at the time of starting after changing the security ID.



(5) Click [OK] and the unit is rebooted automatically. After restart, Write Filter becomes effective.

- NOTE** • After restart, Write Filter becomes effective and it's not necessary to set it again.

Important notes in changing the security ID

When the security ID is changed, the MACHINE\_NAME is changed and therefore the Event Error occurs.



## 5 RAM Disk

It's a volatile disk area that stores event error data OS writes or IE's cache data.

<In the factory settings>

Drive Letter: Z

Size: 3MB

**NOTE**

- Do not change the Drive Letter setting.

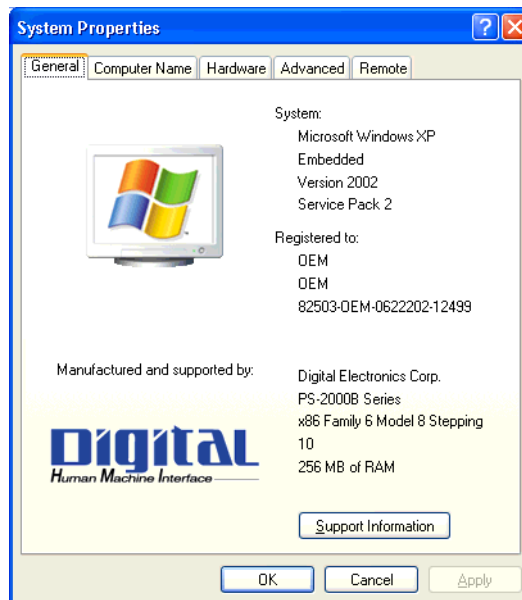
### 5.1 RAM Disk Settings Procedure

**NOTE**

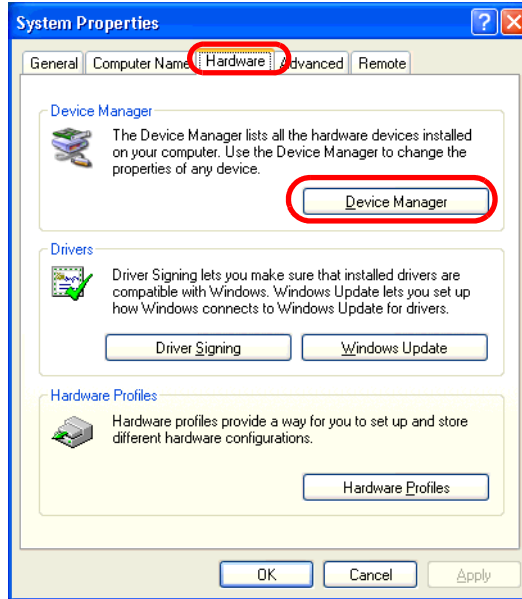
- Before setting the RAM Disk, disable the Write Filter setting. When the Write Filter is effective, the change is not reflected.

☞ "3.1 Write Filter Settings Procedure"(Page.1-8)

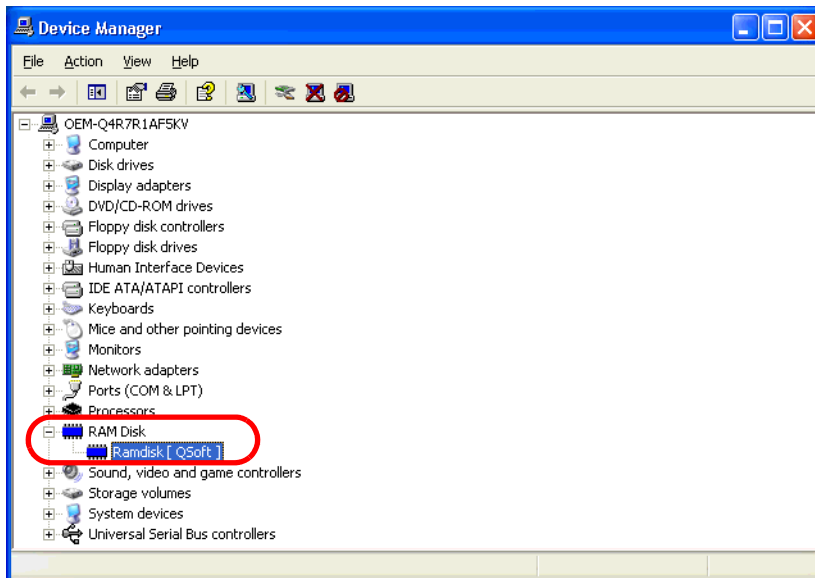
- (1) Start the system in the control panel.



- (2) Select the [Hardware] tab and then [Device Manager].



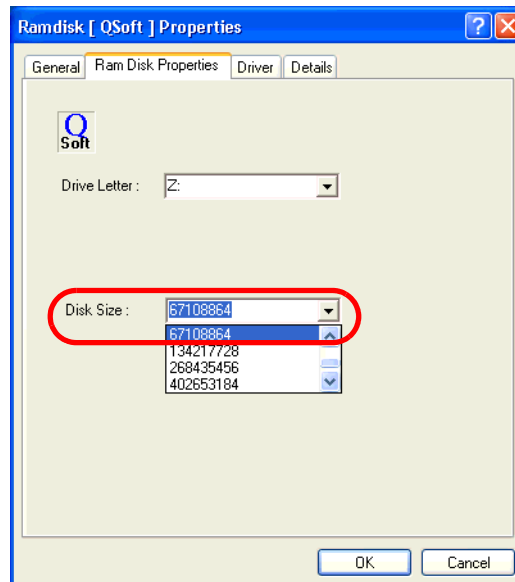
- (3) The following dialog box will appear. Click the "+" mark on the left from the [RAM Disk] and double-click [Ram disk[QSoft]].



- (4) The following dialog box will appear. Select the [Ram Disk Properties] tab.



- (5) Set a RAM Disk area in [Disk Size].



**IMPORTANT**

- The maximum value of the RAM Disk area is 67108864. When the value over the maximum value is set, an error occurs.

**NOTE**

- Do not change the Drive Letter setting.

- (6) Restart the unit.

## 6 Unit Settings

### 6.1 Control Panel Function

Icons	Details	complement (useful range etc.)
BackLight Brightness*1	Change Backlight Brightness settings. ☞ "6.2 Backlight Brightness"(Page.1-15)	The backlight can be set to any of 4 levels of brightness. The initial setting is the maximum.
Internet Option	Configure your Internet display and connection settings.	In the factory setting, cache size is set to 1MB and the history preservation day is set to zero and the cache file storage folder is changed to Z:\(RAM Disk).
Folder option	Customize the display of files and folders, change file associations, and make network files available offline.	In the factory setting, the use of off-line of Network File is set for invalidity.
Printer and FAX	Shows installed printers and fax printers and helps you add new ones.	FAX is not compatible.
Add/Remove programs	Install or remove programs and Windows components.	Add / Remove Windows component and Windows Update cannot be used.
Internet Information Service	Manages IIS, the web server for Internet and intranet web sites.	The factory setting is to disable the IIS.

\*1 PS-2000B does not have this function.

#### NOTE

- Before each unit settings, disable the Write Filter setting. When the Write Filter is effective, the change is not reflected.

☞ "3.1 Write Filter Settings Procedure"(Page.1-8)

## 6.2 Backlight Brightness

This tool adjusts the Backlight settings. The backlight can be set to any of 4 levels of brightness.

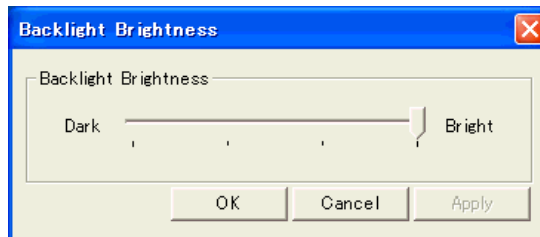
### Backlight Settings - Adjustment Procedure

#### NOTE

- Before setting the Backlight Brightness, disable the Write Filter setting. When the Write Filter is effective, the change is not reflected.

☞ "3.1 Write Filter Settings Procedure"(Page.1-8)

- (1) Double click the Control Panel's [Backlight Brightness] icon on the Control Panel.



- (2) Select the required level of brightness. (4 levels)

- (3) Click [OK] and end.

#### NOTE

- PS-2000B does not have this function.

## 6.3 KeyClick

This is a software keyboard (KeyClick32) of IN-FINITY soft make. Please surely read the License agreement on the appendix before using it.

☞ "1 [IN-FINITY soft KeyClick32] Agreement"(Page.A-2)

When changing font size, set the setting referring the following diagram.

### KeyClick Settings Procedure

#### NOTE

- Before setting the KeyClick, disable the Write Filter setting. When the Write Filter is effective, the change is not reflected.

☞ "3.1 Write Filter Settings Procedure"(Page.1-8)

#### IMPORTANT

- You have to log on as Power User in order to set the KeyClick.

- (1) Start as the next. [Start]-->[All program]-->[KeyClick]

(Executable file is C:\Proface\KeyClick\KeyClick.exe)

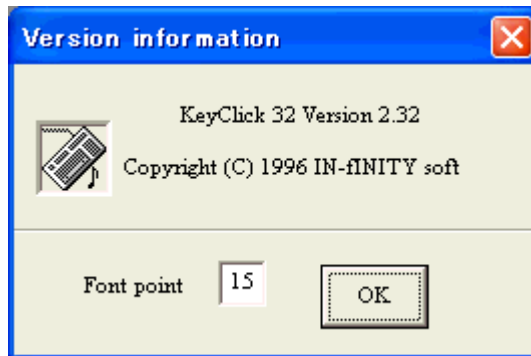
- (2) When changing font size, set the setting referring the following diagram.

(1) Click here and display dialog for changing font size.

(2) Click PW and end KeyClick. Restart KeyClick and the contents of change becomes effective.



Screen for changing font size.



## 6.4 UPDD

UPDD is the touch panel driver for the mouse emulation (D.M.C Corp.make). Before using, be sure to read the license arrangement on the appendix.

☞ "2 [DMC Corporation Mouse Emulation Software] SLA"(Page.A-3)

UPDD is not installed in PS-2000B before shipment. Please install it following the procedure below if needed.

UPDD Installation procedure

### NOTE

- Before installing the UPDD, disable the Write Filter setting. When the Write Filter is effective, the installation is not reflected.

☞ "3.1 Write Filter Settings Procedure"(Page.1-8)

- (1) Start setup.exe from the folder UPDD in XPE's CD-ROM. Following the Installer's instructions, install the UPDD.

(Executable file is \UPDD\setup.exe in the CD-ROM of the XPE.)

UPDD Settings Procedure

- (1) Start as the next. [Start]-->[All program]-->[UPDD] and [Calibration].

(Executable file is C:\Program Files\UPDD\TBCALIB.exe)

- (2) Modify the screen following the procedure shown on the screen.

## 6.5 Delete Language

When using the Multilanguage version, deleting unnecessary languages can increase the available area of the CF card. The Japanese version doesn't have this function.

### IMPORTANT

- The language that has been deleted once cannot be undone. It's recommended to back it up in advance using the Recovery Tool.

Deleting unnecessary languages procedure is as follows.

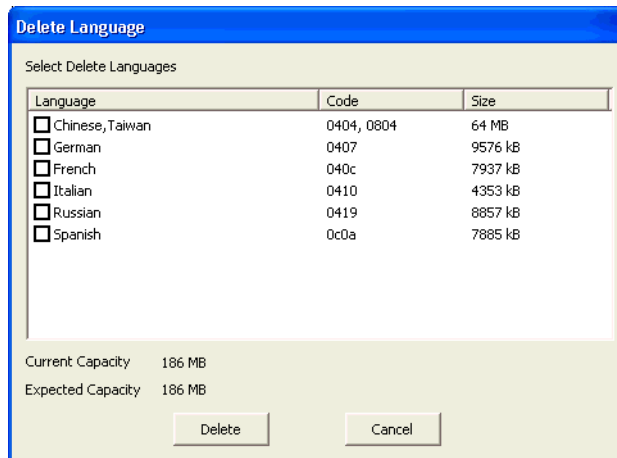
## Delete Language Settings Procedure

**NOTE**

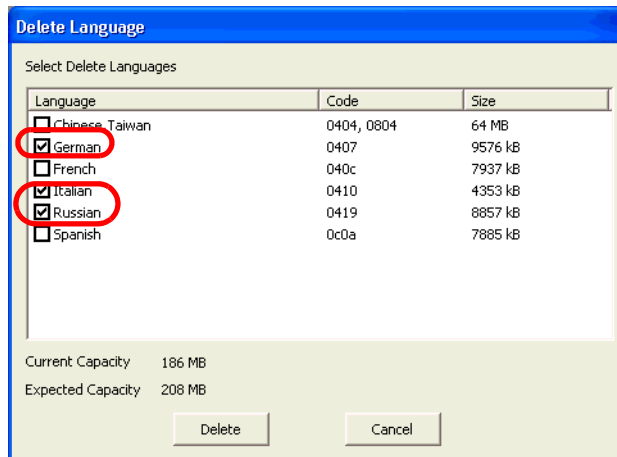
- Before deleting the language, disable the Write Filter setting. When the Write Filter is effective, the change is not reflected.

☞ "3.1 Write Filter Settings Procedure"(Page.1-8)

- (1) Open [Start]->[Run] and enter the pass as follows: C:\Proface\DeleteLanguage\DelLang.exe. After starting it, the following dialog box will appear.



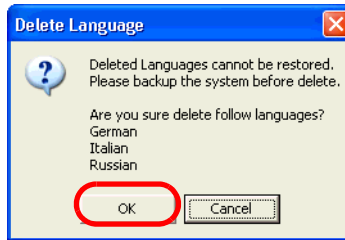
- (2) Check the language to delete. (Current Capacity shows the current available capacity. Expected Capacity shows the available area after delete.)



- (3) After checking the available capacity after delete, select the [Delete] button.



- (4) The following dialog box will appear. Click [OK].



- (5) Restart the unit.

## 6.6 Windows Media Player

It's necessary to download the Windows Media Player.

### NOTE

- The following URL may be changed. For details, please check Sun Microsystems's site.
- Before installing Windows Media Player, disable the Write Filter setting. When the Write Filter is effective, the installation is not reflected.

☞ "3.1 Write Filter Settings Procedure"(Page.1-8)

- For Japanese Version

Download the Japanese version and install referring to the following URL.

<http://www.microsoft.com/downloads/details.aspx?displaylang=ja&FamilyID=B446AE53-3759-40CF-80D5-CDE4BBE07999>

- For ML Version

Download the English version and install referring to the following URL.

<http://www.microsoft.com/downloads/details.aspx?familyid=B446AE53-3759-40CF-80D5-CDE4BBE07999&displaylang=en>

In the case of use with language except English, download each language's MUI pack and install referring to the following URL.

<http://www.microsoft.com/downloads/details.aspx?FamilyID=02106bdb-b012-4327-96cb-73937ae00667&DisplayLang=en>

## 6.7 Java Runtime

For Java Runtime, the required Java VM's version differs depending on a user application. Therefore Java Runtime is not installed before shipment. When using Java Runtime with Web terminal so on, be careful with the following things and install following the procedure.

**NOTE**

- The following URL may be changed. For details, please check Sun Microsystems's site.
- Before installing Java Runtime, disable the Write Filter setting. When the Write Filter is effective, the installation is not reflected.

 "3.1 Write Filter Settings Procedure"(Page.1-8)

- Download procedure

URL:<http://java.sun.com/j2se/>

From the J2SE 1.4.2 in the Popular Downloads in the URL above, select Download J2SE JRE and download JRE.

Use the Java Runtime with the version corresponding to the used application.

The version which finished a checking of operations is "1.4.2.10".

- Installation procedure

In order to decrease the capacity of the module to be installed, install on custom mode.

When the language support is unnecessary, install only "Java 2 Runtime Environment".

## 6.8 Flash Player and Shockwave Player (Macromedia Co.)

These application programs are not installed before shipment. when using them as Web terminal so on, make its environment of the Internet use available and install following the procedure. Please download the latest version for use.

**NOTE**

- The following URL may be changed. For details, please check Sun Microsystems's site.
  - Before installing Flash Player and Shockwave Player, disable the Write Filter setting. When the Write Filter is effective, the installation is not reflected.
- ☞ "3.1 Write Filter Settings Procedure"(Page.1-8)

Download procedure

Install referring the next URL and following the procedure for installation.

- Flash Player

[http://www.macromedia.com/shockwave/download/download.cgi?P1\\_Prod\\_Version=ShockwaveFlash](http://www.macromedia.com/shockwave/download/download.cgi?P1_Prod_Version=ShockwaveFlash)

- Shockwave Player

<http://sdc.shockwave.com/shockwave/download/download.cgi?>

Checking of operations

The version which finished checking of operations is the next.

- Flash Player 8.0.22.0
- Shockwave Player 10.1.0.11

## 7 Shut Down

When Write Filter is effective, it is unnecessary to perform the Shut Down procedure. Make sure the access lamp of CF card for OS is off, before turning off the power supply.

However when Write Filter is effective, the OS setting changed and the data written to the C drive during the time are canceled with the power supply OFF.

### 7.1 Shut Down for the time when combined with HDD

For use with the HDD combined, when the HDD is not accessed, the operation for shutdown is unnecessary. However, the Write Cache remains depending on a timing of power OFF and the data is not written into the HDD properly. For use with the HDD combined, disable the Write Cache following the procedure below.

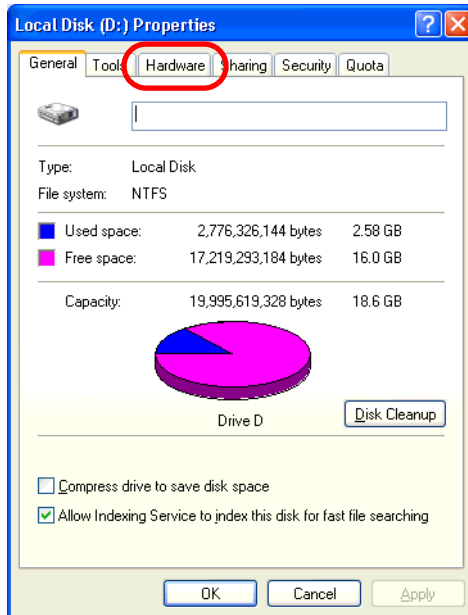
#### Settings Procedure

**NOTE**

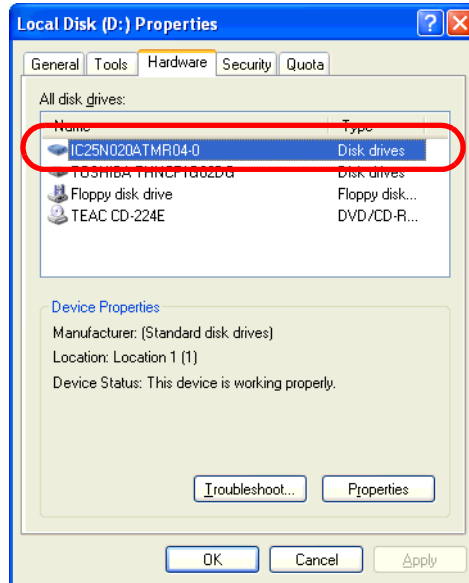
- PS-370xA Series does not have this function.
- Before disabling the Write Cache, disable the Write Filter setting. When the Write Filter is effective, the change is not reflected.

☞ "3.1 Write Filter Settings Procedure"(Page.1-8)

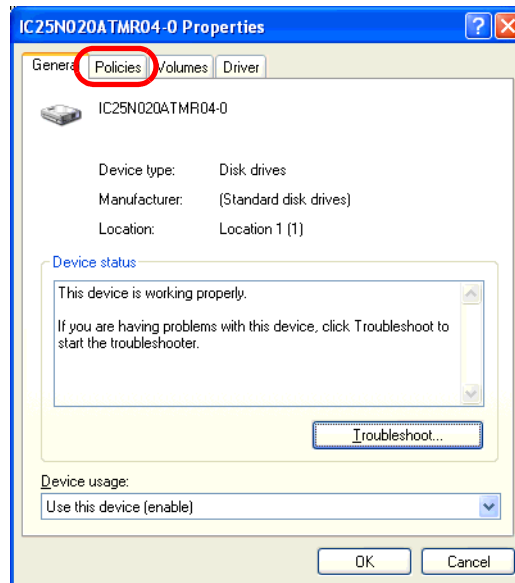
- (1) On the Explorer, select the hard disk and select [Properties] from the [File] menu.
- (2) The following property dialog box will appear. Select the [Hardware] tab.



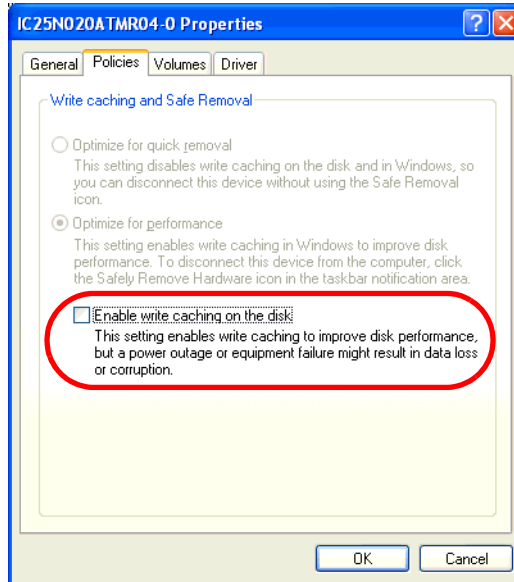
- (3) From [All disk drives ], select the hard disk and select [Properties].



- (4) The property dialog box will appear. Select the [Policies] tab.



- (5) Uncheck [ Enable write caching on the disk ] and select [OK].



- (6) The hard disk's property dialog box will return. Select [OK].
- (7) Restart this unit.

## 8 Recovery

There's the Recovery Tool for recovery of XPE.

The Recovery Tool is open in the Pro-face web site only. (URL <http://www.pro-face.com/>)

For downloading the Recovery Tool and how to use it, refer to the web site shown above.

The Recovery Tool can be used only when the following conditions are satisfied.

- Only the CF Card made by Pro-face is used.
- Only the XPE CF card made by Pro-face is saved.

## 9 Restrictions

- Help document is not installed.
- The volume of the memory used when the unit starts is about 100 MB.
- When the memory has 128MB, the XPE cannot be used. Use it with the memory that has 256MB or more.
- The virtual memory function cannot be used. The OS may stop depending on the memory allocation of application software used.
- The function to save Cache in IE and IIS is set as shown below before shipment.

- Cache File: Minimum Value

- IIS: disable

**NOTE**

- Since the above mentioned files are saved on RAM DISK, those files are deleted when you turn off the XPE.
- The large-size application software such as iFIX of SCADA software so on cannot be installed.
- The function of Windows Update is the online support to update Windows automatically and make the system the newest condition. But XPE does not correspond to Microsoft's Windows Update Service. When executing Windows Update on the Internet, a certain update module will fail. Consequentially do not execute installation on the Internet.



# A | Appendices

- 1 [IN-fINITY soft KeyClick32] Agreement.....A-2
- 2 [DMC Corporation Mouse Emulation Software] SLA .....A-3

## 1 [IN-fINITY soft KeyClick32] Agreement

### [IN-fINITY soft KeyClick32] Agreement

Digital Electronics Corporation shall be in no case liable for any loss or damages to you or any third party whatsoever arising from any faulty performance of IN-fINITY soft, nor shall be responsible to correct such error of the software program in question.

## 2 [DMC Corporation Mouse Emulation Software] SLA

### **[DMC Corporation Mouse Emulation Software(TSC-1310D/DD)] Software License Agreement**

Before unsealing and using this product, please read the following license agreement carefully: This license agreement regarding the following software product (hereinafter called "product") is concluded between you the individual or entity licensing the product (hereinafter called ("licensee")) and DMC Co., Ltd. (hereinafter called "DMC"). With unsealing, installing, copying or using the product, the licensee is regarded to agree this contract and the contract is in force. Please confirm and understand this agreement fully in advance. If you do not agree this contract, do not unseal, install, copy or use the software product at all. In such a case, please return the product at an unused state to the place you the licensee purchased it. Your payment will be returned to the licensee.

#### 1. Copyright

The copyright of the software product belongs to Touch-Base, Ltd.

#### 2. License

For the programs included in this product and the documents related to it, DMC grants untransferable nonexclusive license to licensee, which permits use of the product under the following conditions:

- (1) When a licensee does not purchase the license which permits the licensee to use a licensed product and its copy(s) and/or the license which permits use of the product on multiple computers, the licensee is granted the right to use the product on a single computer.
- (2) The licensee can create one copy of the product for archival purposes. For the other purposes, copying the whole or part of the product is strictly prohibited whichever medium you use.
- (3) The licensee shall display the copyright notice and other necessary information which is the same as that for the product on every copy of the product.
- (4) The intangible property right of the product and its copy(s) belong to DMC or the DMC supplier.

#### 3. Term of use

This contract shall maintain its validity from conclusion of the contract to the cancellation by DMC or the licensee.

#### 4. Termination of the right of use

- (1) The licensee can at any time terminate the right to use the product by expunging or destroying the product and all the copied contents.
- (2) When a licensee contravenes these license contents, DMC can notify the licensee of termination of the right to use the product. In this case, the licensee shall return the product or all the copied contents to DMC within one month.

## 5.Limited Warranty

- (1) DMC guarantees that 90 days after the licensee purchased the product, neither material nor manufacturing flaws shall be found at the medium where the product has been recorded or stored. If any errors related to the material or manufacturing is recognized when the product is installed, we shall replace the medium used to install the product on the condition that we are notified of it within the guaranteed period.
- (2) DMC shall grant the right to use the product at a state it has been supplied without explicit or implicit guarantee except for replacement of the medium containing product described in the above clause. Further, we do not guarantee that the product is suitable as useful for the licensee's specific purpose of use and that execution of the product is neither interrupted nor an error is found at its execution.
- (3) The responsibility attributable to DMC based on this agreement is limited to replacement of the medium containing the product, and DMC shall not assume any responsibility for the explicit or implicit guarantee including the other legal warranty against a defect and a liability for reparation given from a third party to the licensee regarding the licensee's profit loss caused by the product, damage arising from a special circumstance and the damage against data or intangible property right.

## 6.License's obligation

The licensee shall recognize that the product shall possess the confidential information or property information including the intangible property right protected by the Copyright Act and shall not take the following actions:

- (1) Use and copying of the product against the terms of the license and disassembling, reverse engineering, and modifying the product.
- (2) Deletion and/or change of display of the intangible property right including the copyright displayed on the medium containing the product.

## 7.Restrictions on Export

When the product is subjected to the regulation of the Foreign Exchange and Foreign Trade Control Act and the laws and regulations accompanying it and the Export, the licensee shall observe the corresponding laws and regulations and rules.

DMC Co.,Ltd.

<http://www.dmccoltd.com>

Hironokougyoudanchi, Hirono-machi, Futaba-gun, Fukushima

979-0401, Japan

Phone: +81-240-27-4030 Fax: +81-240-27-4025