

Mitsubishi <16> Mitsubishi Electric Corporation

FX Series CPU Direct Connection

Selecting PLC Type

Start up GP-PRO /PBIII.

Select the following PLC Type when creating the project file.



Communication Setting Sample

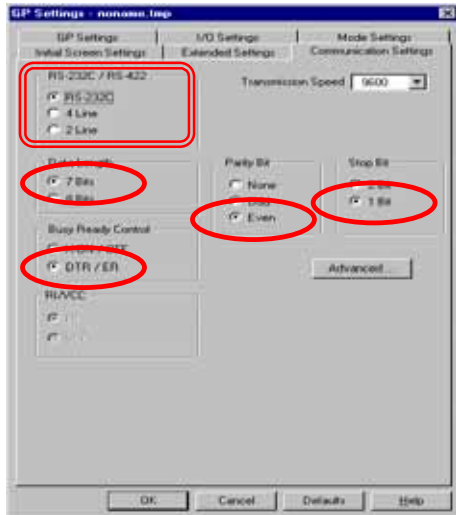
GP Setup		FX Series Settings
Baud Rate	9600 bps	---
Data Length	7 bits (fixed)	---
Stop Bit	1 bit (fixed)	---
Parity Bit	Even (fixed)	---
Data Flow Control	ER Control	---
Communication Format	RS-232C	---
Communication Format	4-wire	---
Unit No.	0 (fixed)	---

Communication Settings [GP]

1 [GP-PRO/PB C-Package Setting]

Select [GP Setup] on Project Manager.

1) Communication Settings

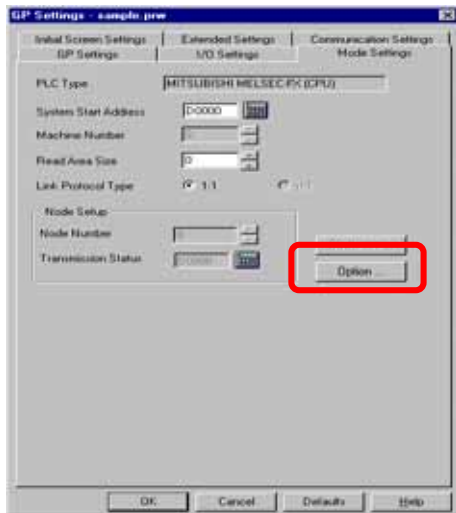


1) Communication Settings

Transmission Speed : 9600bps
 Data Length : 7 Bits
 Stop Bit: 1 Bit
 Parity Bit: Even
 Busy Ready Control : DTR / ER
 RS-232C/ RS-422 :
 Using GP430-IP11-O : RS232C
 Using 2-Port Adapter : 4 Line

* Select one in
 depending on the communication
 method.

2) Mode Settings

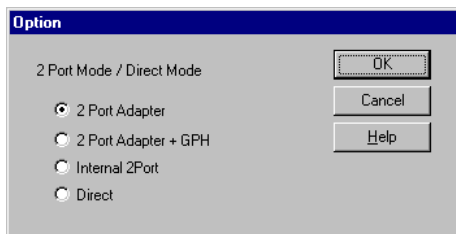


2) Mode Settings

System Start Address: Arbitrary Address

Select [Option...].

3) 2-Port Mode/Direct Mode Settings



3) 2-Port Mode/Direct Mode Settings

Using GP430-IP11-O Cable: Direct
 Using 2-Port Adapter : 2-Port Adapter
 Using Internal 2-Port Feature: Internal 2-Port

Select [Transfer] --> [Setup] --> [Transfer Settings].

4) Transfer Settings

Transfer Settings

Send Information

- Send Information
- GP System Screen
- Filing Data(CF card)
- Data Trans Func CSV Data(CF card)

Communications Port

- COM
 - Comm Port: COM1
 - Baud Rate: 115.2K (bps)
 - Retry Count: 5
- Ethernet
 - IP Address: 0. 0. 0. 0
 - Port: 8000
- Ethernet: Auto Acquisition
- Memory Loader

Transfer Method

- Send All Screens
- Automatically Send Changed Screens
- Send User Selected Screens

Transfer Mode

- Preparation for a transfer and a transfer are made simultaneous.
- It is transferred after preparation for a transfer is finished.

Setup

- Automatic Setup
- Force System Setup
- Do NOT Perform Setup

Use Extended Program :

- Simulation

System Screen

Setup CFG file :

- English
- Japanese
- Selection

C:\Program Files\pro-face\ProPBWin\protocol\ Browse...

OK Cancel Help

4) Transfer Settings GP System Settings: Checked

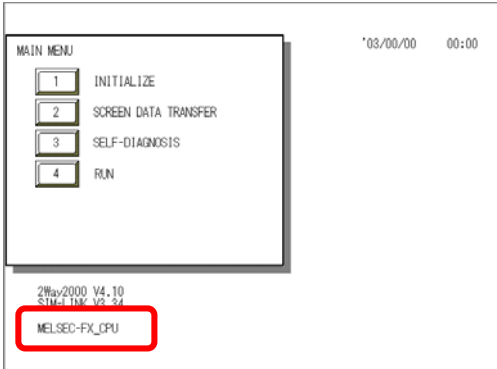
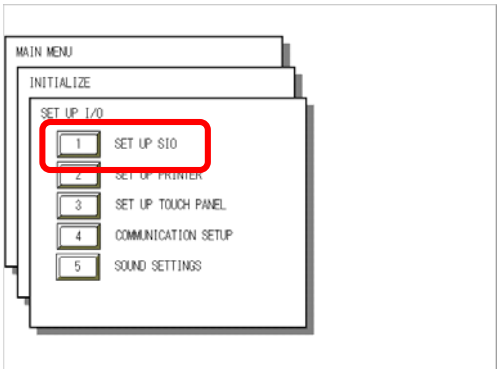
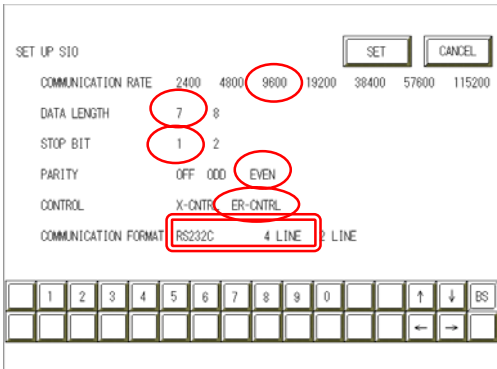
Transfer to GP after settings completed.

2 [GP Settings]

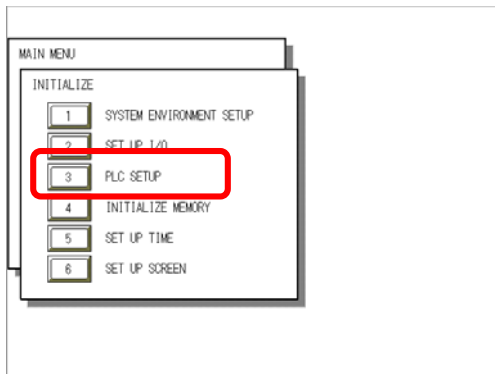
-Displaying Setting Screen-

Touch the left top of the screen within 10 second after powering on.

Or touch the right top and the right bottom of the screen at the same time. Keep 2 points touched and touch the left bottom. The menu bar will display on the bottom of the screen. Then touch [Offline].

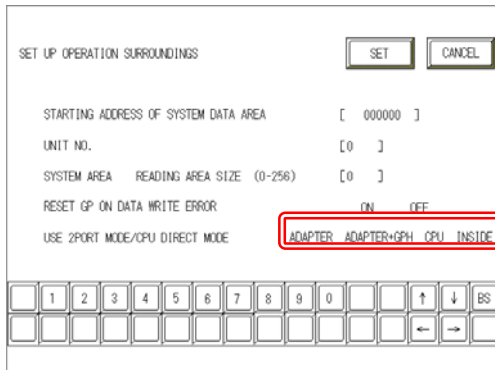
<p><u>1) Checking GP Type</u></p> 	<p><u>1) Checking GP Type</u></p> <p>If you have selected Mitsubishi MELSEC-FX (CPU), the following will be shown.</p> <p>”MELSEC-FX_CPU”</p>
<p><u>2) Communication Settings</u></p> 	<p><u>2) Communication Settings</u></p> <p>[MAIN MENU] ↓ [INITIALIZE] ↓ [SET UP I/O] ↓ [SET UP SIO]</p>
	<p>Communication Rate: 9600bps Data Length : 7 Bits Stop Bit: 1 Bit Parity: Even Control : ER Cntrl Communication Format Using GP430-IP11-O: RS232C Using 2-Port Adapter : 4 Line</p> <p>* Select one in <input type="text"/> depending on the communication method.</p>

3) Setting up Operation Surroundings



3) Setting up Operation Surroundings

[MAIN MENU]
↓
[INITIALIZE]
↓
[PLC SETUP]
↓
[PLC SETUP]



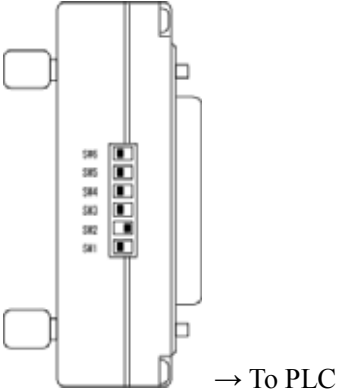
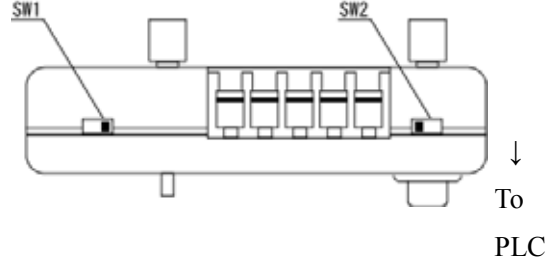
Starting Address of System Data Area:
Arbitrary Address

Unit No.: 0

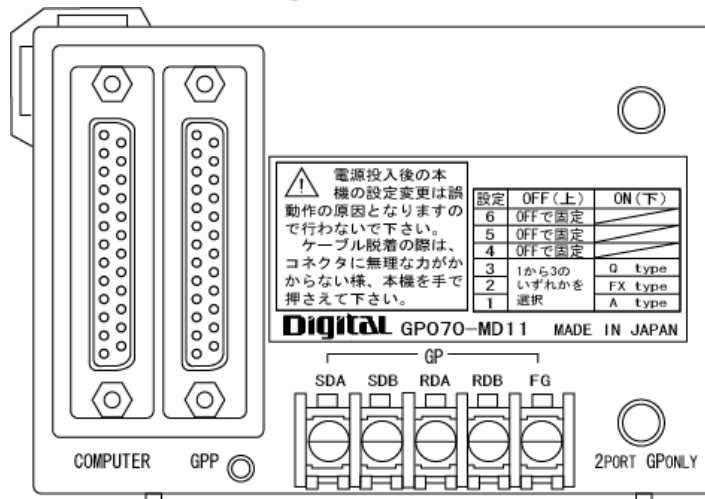
Use 2-Port Mode/CPU Direct Mode
GP430-IP11-O Cable: CPU
2-Port Adapter : Adapter
Internal 2-Port Adapter: Inside

* Select one in .

3 [2-Port Adapter Settings]

<p><u>1) PLC Type Settings</u></p> <p>→ ON</p>  <p>→ To PLC</p>	<p><u>1) PLC Type Settings</u></p> <p>SW 6 :OFF</p> <p>SW 5 :OFF</p> <p>SW 4 :OFF</p> <p>SW 3 :OFF</p> <p>SW 2 :ON</p> <p>SW 1 :OFF</p>
<p><u>2) Device/PLC Settings</u></p>  <p>↓ To PLC</p>	<p><u>2) Device/PLC Settings</u></p> <p>SW 1: Connecting Peripheral Device</p> <p>RS-422 Cable: Right (GPP)</p> <p>RS-232C Cable : Left (COMPUTER)</p> <p>SW 2: Setting to Connect any Peripheral devices</p> <p>Only GP (No Peripheral Device):</p> <p style="text-align: right;">Right (GP ONLY)</p> <p>GP and Peripheral Device:</p> <p style="text-align: right;">Left (2PORT)</p>

<Reference> 2-Port Adapter



Communication Settings [PLC]

There are no items to set on the PLC.