

Mitsubishi <10> Mitsubishi Electric Corporation

Q Series (A Mode) + Link Unit Connection

Selecting PLC Type

Start up GP-PRO /PBIII.

Select the following PLC Type when creating the project file.



Communication Setting Sample

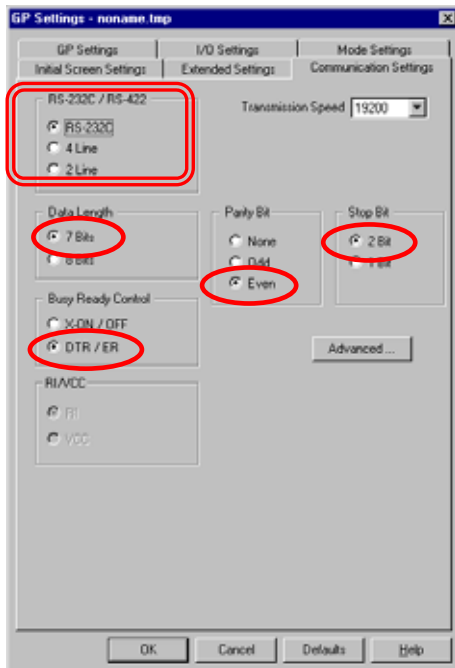
GP Setup		Computer Link Unit Settings	
Baud Rate	19200bps (fixed)	Baud Rate	19200 bps
Data Length	7bits (fixed)	Data Bit	7 bits
Stop Bit	2bits (fixed)	Stop Bit	2 bits
Parity Bit	Even	Parity Check Parity setting even/odd	Yes Even
Data Flow Control	ER Control	---	
Communication Format (RS-232C)	RS-232C	Mode Setup (RS-232C)	4 (Format 4 Protocol Mode)
Communication Format (RS-422)	4-wire type	Mode Setup (RS-422)	4 (Format 4 Protocol Mode)
-	-	Write possible in RUN mode	Possible
-	-	Sum Check	Yes
Unit No.	0 (fixed)	Station Number	0

Communication Settings [GP]

1 [GP-PRO/PB C-Package Setting]

Select [GP Setup] on Project Manager.

1) Communication Settings

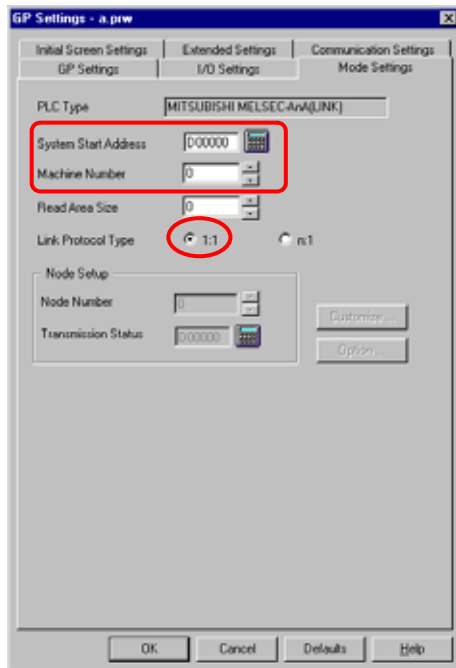


1) Communication Settings

Transmission Speed : 19200bps
Data Length: 7 Bits
Stop Bit: 2 Bit
Parity Bit: Even
Busy Ready Control: DTR / ER
RS-232C/ RS-422
RS-232C Connection: RS-232C
RS-422 Connection: 4 Line

* Select one in
depending on the communication
method.

2) Mode Settings



2) Mode Settings

System Start Address: Arbitrary Address

Machine Number: 0

Link Protocol Type: 1:1

Select [Transfer] --> [Setup] --> [Transfer Settings].

3) Transfer Settings

The screenshot shows the 'Transfer Settings' dialog box with the following configuration:

- Send Information:**
 - Upload Information
 - GP System Screen
 - Download Data(LF card)
 - Data Trans Func CSV Data(CF card)
- Transfer Method:**
 - Send All Screens
 - Automatically Send Changed Screens
 - Send User Selected Screens
- Transfer Mode:**
 - Preparation for a transfer and a transfer are made simultaneous.
 - It is transferred after preparation for a transfer is finished.
- Setup:**
 - Automatic Setup
 - Force System Setup
 - Do NOT Perform Setup
- Use Extended Program:**
 - Simulation
- Setup CFG file:**
 - English
 - Japanese
 - Selection
- Communications Port:**
 - COM
 - Comm Port: CDM1
 - Baud Rate: 115.2K (bps)
 - Retry Count: 5
 - Ethernet
 - IP Address: 0. 0. 0. 0
 - Port: 8000
 - Ethernet: Auto Acquisition
 - Memory Loader

3) Transfer Settings GP System Settings: Checked

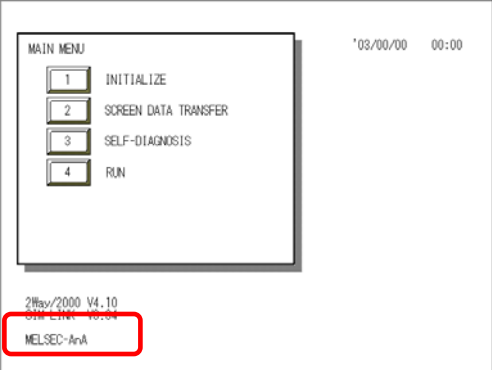
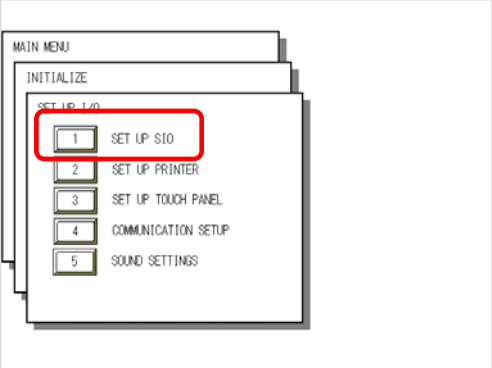
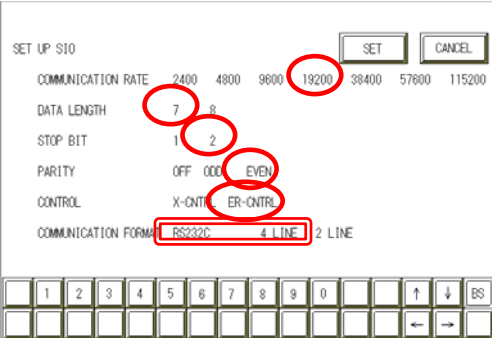
Transfer to GP after settings completed.

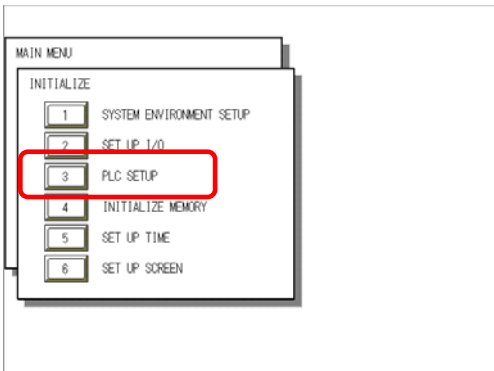
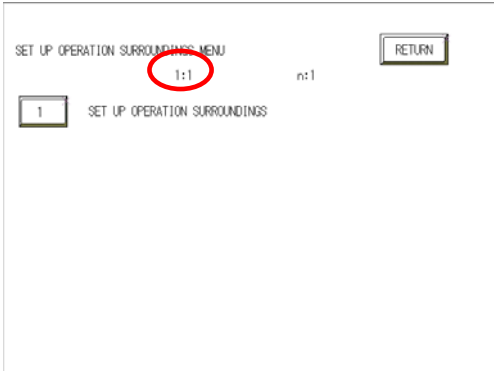
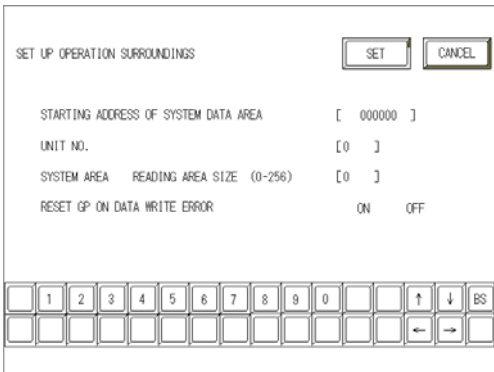
2 [GP Settings]

-Displaying Setting Screen-

Touch the left top of the screen within 10 second after powering on.

Or touch the right top and the right bottom of the screen at the same time. Keep 2 points touched and touch the left bottom. The menu bar will display on the bottom of the screen. Then touch [Offline].


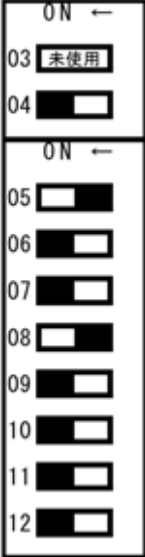
<p><u>1) Checking GP Type</u></p> 	<p><u>1) Checking GP Type</u></p> <p>If you have selected Mitsubishi MELSEC - AnA (Link), the following will be shown.</p> <p>“MELSEC – AnA”</p>
<p><u>2) Communication Settings</u></p> 	<p><u>2) Communication Settings</u></p> <p>[MAIN MENU] ↓ [INITIALIZE] ↓ [SET UP I/O] ↓ [SET UP SIO]</p>
	<p>Communication Rate: 19200bps Data Length: 7 Bits Stop Bit: 2 Bits Parity: Even Control: ER Cntrl Communication Format RS-232C Connection :RS-232C RS-422 Connection :4 Line</p> <p>* Select one in <input type="text"/> depending on the communication method.</p>

<p><u>3) Setting up Operation Surroundings</u></p> 	<p><u>3) Setting up Operation Surroundings</u></p> <p>[MAIN MENU] ↓ [INITIALIZE] ↓ [PLC SETUP] ↓ [PLC SETUP]</p>
	<p>SET UP OPERATION SURROUNDINGS MENU: 1:1</p>
	<p>Starting Address of System Data Area: Arbitrary Address Unit No.: 0</p>

Communication Settings [PLC]


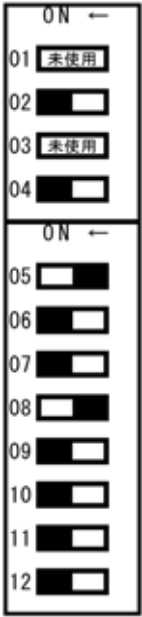
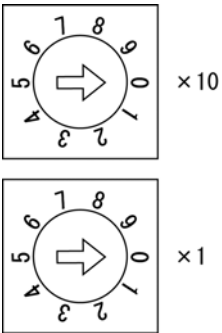
1 [RS-232C Connection]

[Computer Link Unit A1SJ71UC24-R2]

<p>1) <u>Mode Setup</u></p> <p>MODE</p> 	<p>1) <u>Mode Setup</u></p> <p>4 (Format 4 Protocol)</p>
<p>2) <u>Communication Settings</u></p> <p><u>Set switches to the black.</u></p> 	<p>2) <u>Communication Settings</u></p> <p>Baud Rate :19200bps</p> <p>Data Bit :7 Bits</p> <p>Stop Bit :2 Bits</p> <p>Parity Check :Yes</p> <p>Parity Setting Even/Odd :Even</p> <p>Write Possible in RUN Mode: Possible</p> <p>Sum Check :Yes</p>

2 [RS-422 Connection]

[Connecting via Computer Link Unit A1SJ71UC24-R4]

<p>1) <u>Mode Setup</u></p> <p>MODE </p>	<p>1) <u>Mode Setup</u></p> <p>8 (Format 4 Protocol)</p>
<p>2) <u>Communication Settings</u></p> <p><u>Set switches to the black.</u></p> 	<p>2) <u>Communication Settings</u></p> <p>Baud Rate :19200bps Data Bit :7 Bits Stop Bit :2 Bits Parity Check :Yes Parity Setting Even/Odd :Even Write Possible in RUN Mode: Possible Sum Check :Yes</p>
<p>3) <u>Node Settings</u></p> <p>STATION NO</p> 	<p>3) <u>Node Settings</u></p> <p>Station Number: 0</p>