

Mitsubishi <9> Mitsubishi Electric Corporation

QnA Series CPU Direct Connection

Selecting PLC Type

Start up GP-PRO /PBIII.

Select the following PLC Type when creating the project file.



Communication Setting Sample

GP Setup		PLC Settings
Baud Rate	19200 bps	---
Data Length	8 bits	---
Stop Bit	1 bit	---
Parity Bit	Odd	---
Data Flow Control	ER Control	---
Communication Format *1 (RS-232C)	RS-232C	---
Communication Format (RS-422)	4-wire type	---
Unit No.	0 (fixed)	---

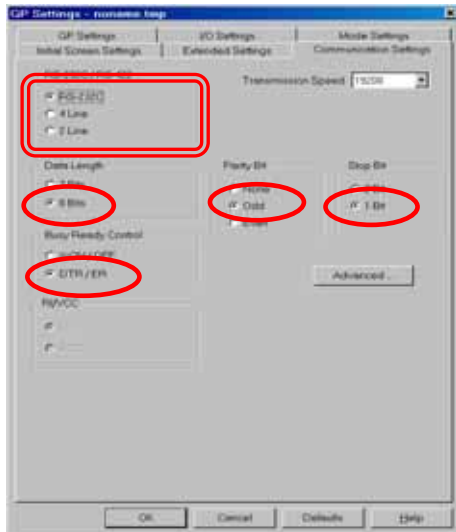
*1 For Communication Format, select RS-232C when using GP430-IP10-O, or select 4-wire type cable when using another cable.

Communication Settings [GP]

1 [GP-PRO/PB C-Package Setting]

Select [GP Setup] on Project Manager.

1) Communication Settings



1) Communication Settings

Transmission Speed : 19200bps

Data Length : 8 Bits

Stop Bit: 1 Bit

Parity Bit: Odd

Busy Ready Control : DTR / ER

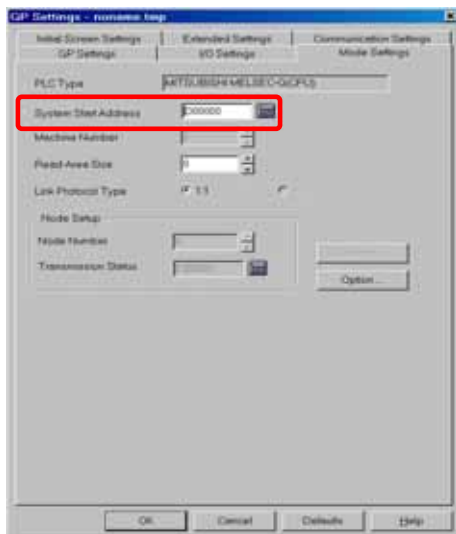
RS-232C/ RS-422 :

Using GP430-IP10-O : RS-232C

Using Other Cable: 4 Line

* Select one in .

2) Mode Settings

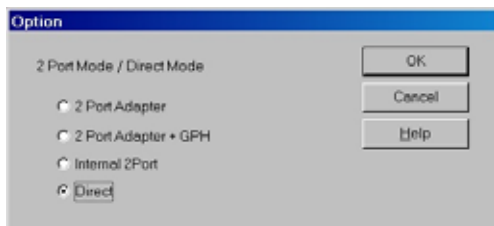


2) Mode Settings

System Start Address: Arbitrary Address

Select [Option...].

3) 2-Port Mode/Direct Mode Settings



3) 2-Port Mode/Direct Mode Settings

Using GP430-IP10-O or User-Created Cable:
Direct

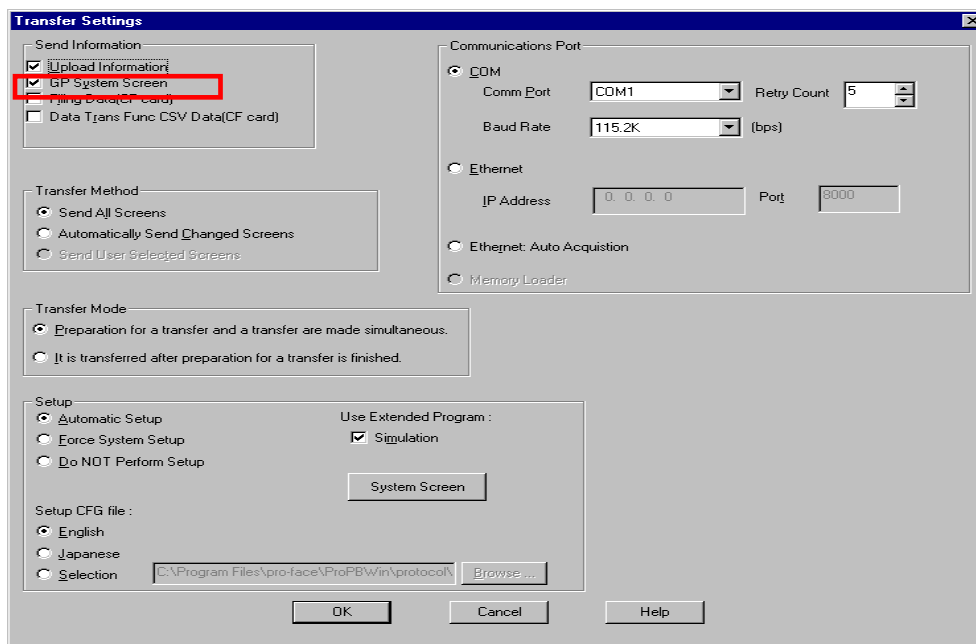
Using 2-Port Adapter : 2-Port Adapter

Using Internal 2-Port Feature:

Internal 2-Port

Select [Transfer] --> [Setup] --> [Transfer Settings].

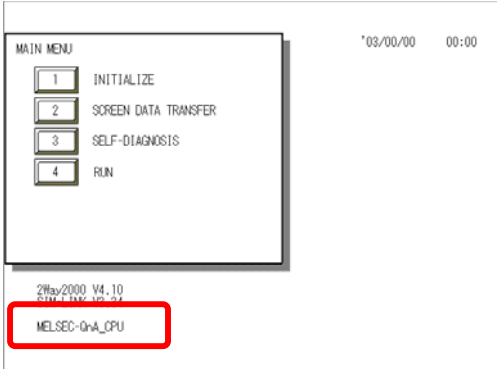
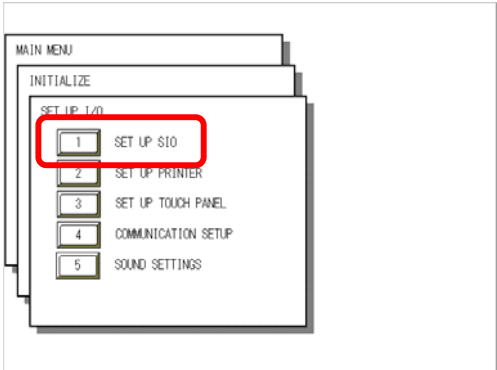
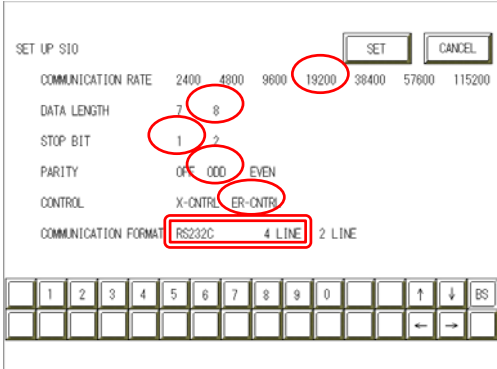
4) Transfer Settings



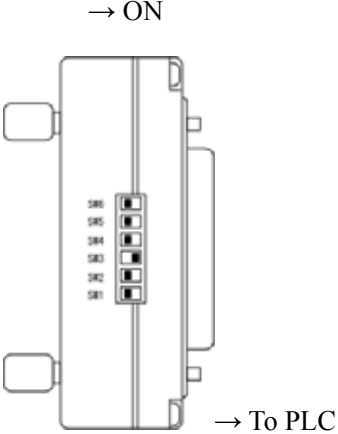
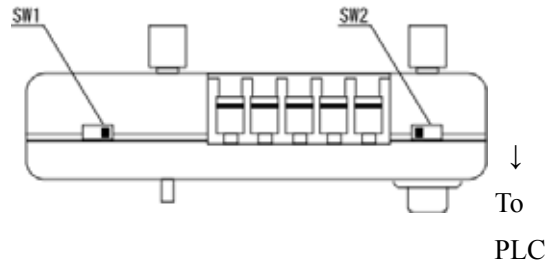
4) Transfer Settings GP System Settings: Checked

Transfer to GP after settings completed.

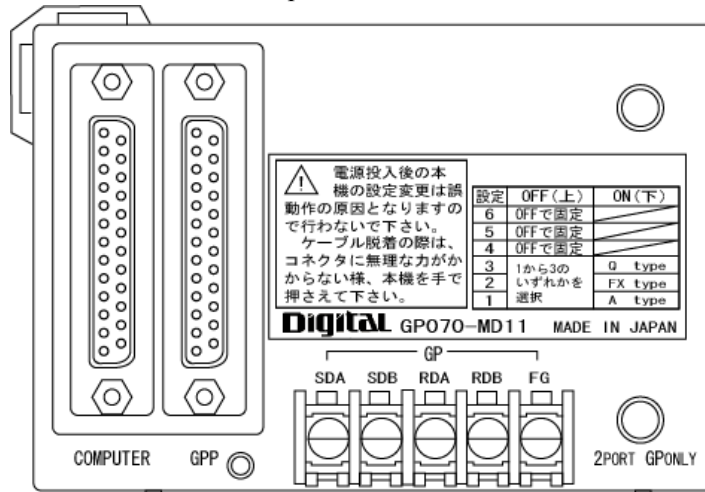
2 [GP Settings]

<p><u>1) Checking GP Type</u></p> 	<p><u>1) Checking GP Type</u></p> <p>If you have selected Mitsubishi MELSEC-QnA (CPU), the following will be shown.</p> <p>“MELSEC-QnA_CPU”</p>
<p><u>2) Communication Settings</u></p> 	<p><u>2) Communication Settings</u></p> <p>[MAIN MENU] ↓ [INITIALIZE] ↓ [SET UP I/O] ↓ [SET UP SIO]</p>
	<p>Communication Rate: 19200bps Data Length: 8 Bits Stop Bit: 1 Bit Parity: Odd Control: ER Cntrl Communication Format Using GP430-IP10-O: RS-232C Using other cable: 4 Line</p> <p>* Select one in <input type="text"/>.</p>

3 [2-Port Adapter Settings]

<p><u>1) PLC Type Settings</u></p> <p>→ ON</p>  <p>→ To PLC</p>	<p><u>1) PLC Type Settings</u></p> <p>SW 6: OFF</p> <p>SW 5: OFF</p> <p>SW 4: OFF</p> <p>SW 3: ON</p> <p>SW 2: OFF</p> <p>SW 1: OFF</p>
<p><u>2) Device/PLC Settings</u></p>  <p>To PLC</p>	<p><u>2) Device/PLC Settings</u></p> <p>SW 1: Connecting Peripheral Device</p> <p>RS-422 Cable: Right (GPP)</p> <p>RS-232C Cable : Left (COMPUTER)</p> <p>SW 2: Setting to connect any peripheral devices</p> <p>GP Only (No Peripheral Device):</p> <p style="text-align: right;">Right (GP ONLY)</p> <p>GP and Peripheral Device:</p> <p style="text-align: right;">Left (2-Port)</p>

<Reference> 2-Port Adapter



Communication Settings [PLC]

There are no items to set on the PLC.