

Mitsubishi <8> Mitsubishi Electric Corporation

QnA Series + Link Unit (Medium) Connection

Selecting PLC Type

Start up GP-PRO /PBIII.

Select the following PLC Type when creating the project file.

[Connecting via Serial Communication Unit]

(A1SJ71QC24, A1SJ71QC24N)



[Connecting via Computer Link Unit]

(A1SJ71UC24, A1SJ71UC24-R2, A1SJ71UC24-R4)



Communication Setting Sample

GP Setup		Serial Communication Unit Settings	
Baud Rate	19200 bps *1	Baud Rate	19200 bps
Data Length	7 bits	Data Bit	7 bits
Stop Bit	2 bits	Stop Bit	2 bits
Parity Bit	Even	Parity Check Parity setting even/odd	Yes Even
Data Flow Control	ER Control	---	
Communication Format (RS-232C)	RS-232C	Mode Setup (RS-232C)	4 (Format 4 Protocol Mode)
Communication Format (RS-422)	4-wire type	Mode Setup (RS-422)	4 (Format 4 Protocol Mode)
---		Sum Check	Yes
Unit No.	0	Station Number	0

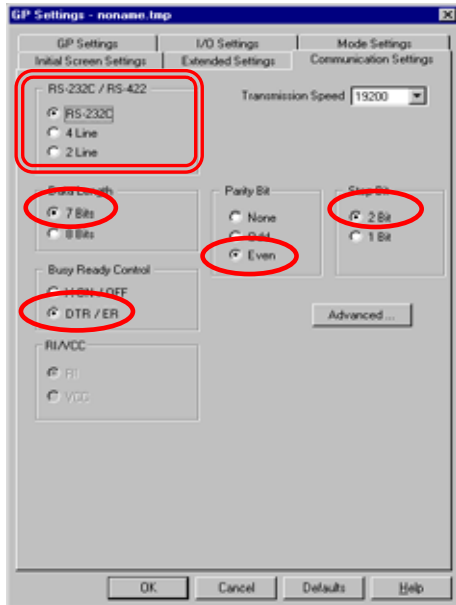
*1 A1SJ71QC24N can use a baud rate of 115200bps.

Communication Settings [GP]

1 [GP-PRO/PB C-Package Setting]

Select [GP Setup] on Project Manager.

1) Communication Settings



1) Communication Settings

Transmission Speed : 19200bps *1

Data Length : 7 Bits

Stop Bit: 2 Bits

Parity Bit: Even

Busy Ready Control : DTR / ER

RS-232C/ RS-422

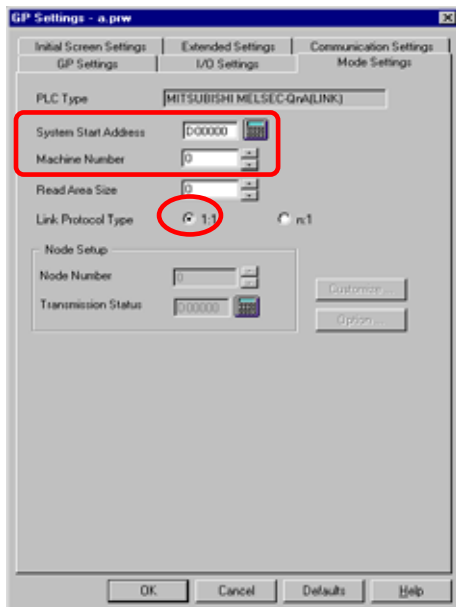
RS-232C Connection: RS-232C

RS-422 Connection: 4 Line

*1 A1SJ71QC24N can use a baud rate of 115200bps.

* Select one in depending on the communication method.

2) Mode Settings



2) Mode Settings

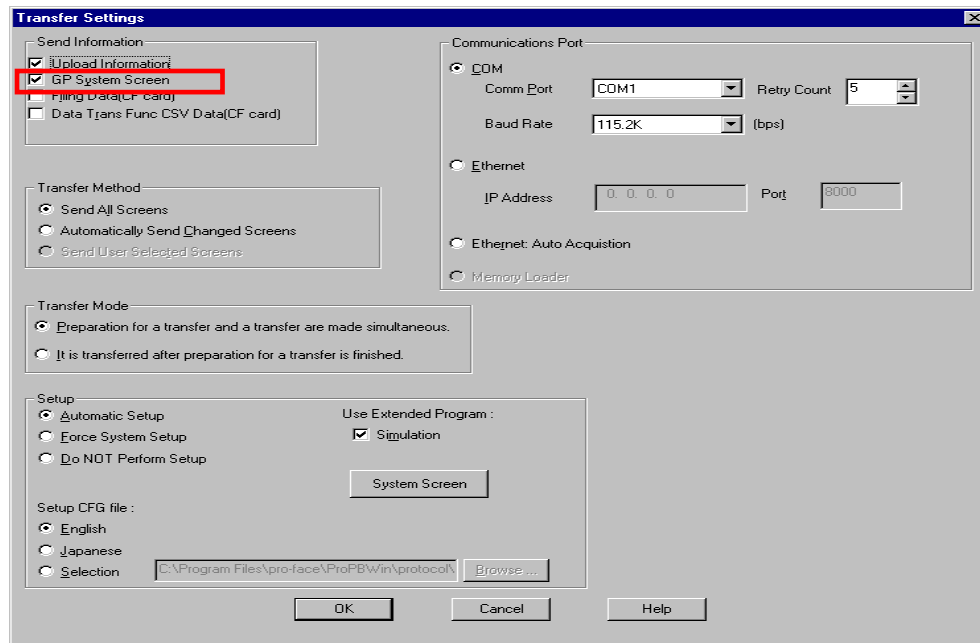
System Start Address: Arbitrary Address

Machine No.: 0

Link Protocol Type: 1:1

Select [Transfer] --> [Setup] --> [Transfer Settings].

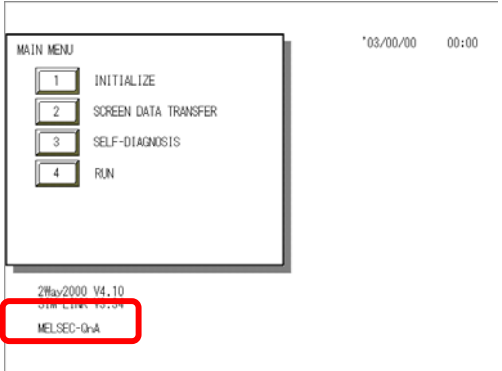
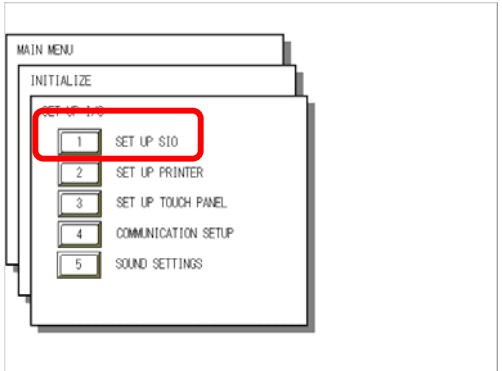
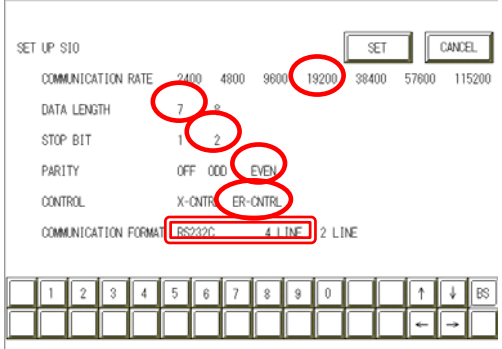
3) Transfer Settings



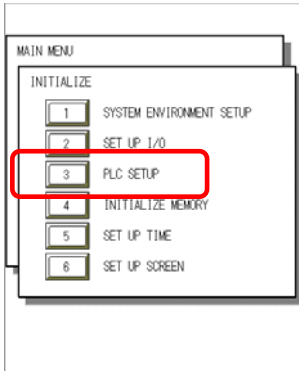
3) Transfer Settings GP System Settings: Checked

Transfer to GP after settings completed.

2 [GP Settings]

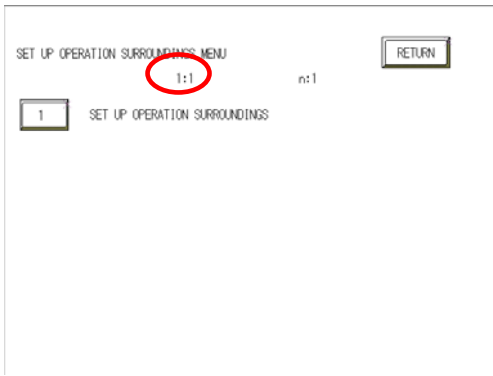
<p><u>1) Checking GP Type</u></p>  <p>MAIN MENU *03/00/00 00:00</p> <p>1 INITIALIZE 2 SCREEN DATA TRANSFER 3 SELF-DIAGNOSIS 4 RUN</p> <p>2May2000 V4.10 03M LINK 13:54 MELSEC-QnA</p>	<p><u>1) Checking GP Type</u></p> <p>[Connecting via Serial Communication Unit] If you have selected Mitsubishi MELSEC-QnA (LINK), the following will be shown. “MELSEC-QnA”</p> <p>[Connecting via Computer Link Unit] If you have selected Mitsubishi MELSEC-AnA (LINK), the following will be shown. “MELSEC-AnA”</p>
<p><u>2) Communication Settings</u></p>  <p>MAIN MENU INITIALIZE SET UP SIO 1 SET UP SIO 2 SET UP PRINTER 3 SET UP TOUCH PANEL 4 COMMUNICATION SETUP 5 SOUND SETTINGS</p>	<p><u>2) Communication Settings</u></p> <p>[MAIN MENU] ↓ [INITIALIZE] ↓ [SET UP I/O] ↓ [SET UP SIO]</p>
 <p>SET UP SIO</p> <p>COMMUNICATION RATE: 2400 4800 9600 19200 38400 57600 115200</p> <p>DATA LENGTH: 7 8</p> <p>STOP BIT: 1 2</p> <p>PARITY: OFF ODD EVEN</p> <p>CONTROL: X-CNTRL ER-CNTRL</p> <p>COMMUNICATION FORMAT: RS232C 4 LINE 2 LINE</p> <p>SET CANCEL</p> <p>1 2 3 4 5 6 7 8 9 0 ↑ ↓ BS ← →</p>	<p>Communication Rate: 19200bps *1 Data Length: 7 Bits Stop Bit: 2 Bits Parity: Even Control: ER Cntrl Communication Format RS-232C Connection :RS-232C RS-422 Connection :4 Line</p> <p>*1 A1SJ71QC24N can use a baud rate of 115200bps.</p> <p>* Select one in <input type="text"/> depending on the communication method.</p>

3) Setting up Operation Surroundings

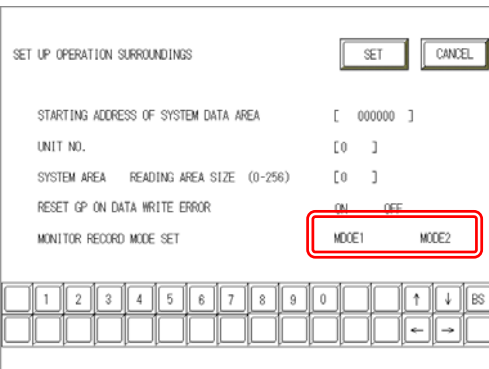


3) Setting up Operation Surroundings

[MAIN MENU]
↓
[INITIALIZE]
↓
[PLC SETUP]
↓
[PLC SETUP]



SET UP OPERATION SURROUNDINGS MENU:
1:1



Starting Address of System Data Area:
Arbitrary Address
Unit No.: 0

* Select one in .

NOTE


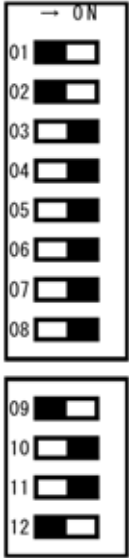
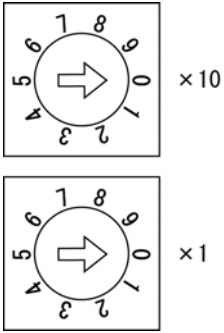
Communication Mode Setup

- **Mode 1:** This mode is valid when the number of the devices of the tags set on one screen is 64 or more. The communication speed is improved by this mode. Select this mode when using 64 or more devices.
- **Mode 2:** This mode is valid when the number of the devices of the tags set on one screen is less than. The communication speed is improved by this mode. Select this mode when using less than 64 devices.

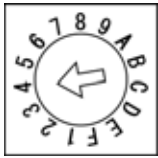
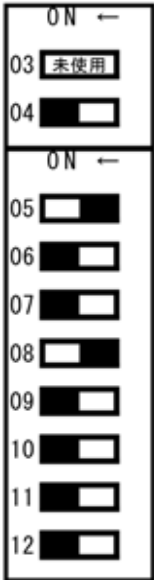
Communication Settings [PLC]

1. RS-232C Connection

1-1 [Connecting via Serial Communication Unit A1SJ71QC24 / A1SJ71QC24N]

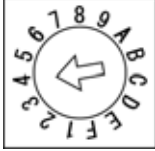
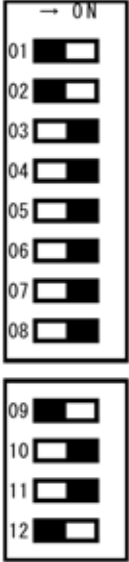
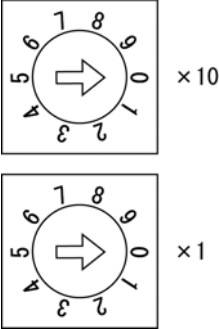
<p>1) <u>Mode Setup</u></p> <p>MODE</p> 	<p>1) <u>Mode Setup</u></p> <p>4 (Format 4 Protocol)</p>
<p>2) <u>Communication Settings</u></p> <p>Set switches to the black.</p> 	<p>2) <u>Communication Settings</u></p> <p>Baud Rate :19200bps Data Bit :7 Bits Stop Bit :2 Bits Parity Check :Yes Parity Setting Even/Odd :Even Write Possible in RUN Mode: Possible Sum Check :Yes</p>
<p>3) <u>Node Settings</u></p> <p>STATION NO</p> 	<p>3) <u>Node Settings</u></p> <p>Station Number: 0</p>

1-2 [Connecting via Computer Link Unit A1SJ71UC24-R2]


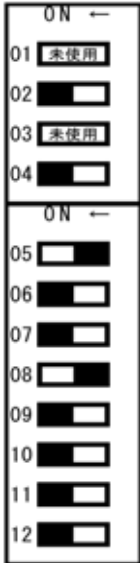
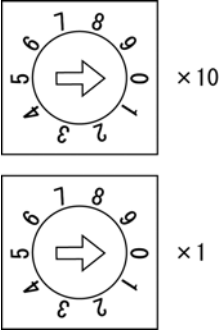
<p>1) Mode Setup</p> <p>MODE</p> 	<p>1) Mode Setup</p> <p>4 (Format 4 Protocol)</p>
<p>2) Communication Settings</p> <p><u>Set switches to the black.</u></p> 	<p>2) Communication Settings</p> <p>Baud Rate :19200bps Data Bit :7 Bits Stop Bit :2 Bits Parity Check :Yes Parity Setting Even/Odd :Even Write Possible in RUN Mode: Possible Sum Check :Yes</p>

2. RS-422 Connection

2-1 [Connecting via Serial Communication Unit A1SJ71QC24N]

<p><u>1) Mode Setup</u></p> <p>MODE</p> 	<p><u>1) Mode Setup</u></p> <p>4 (Format 4 Protocol)</p>
<p><u>2) Communication Settings</u></p> <p><u>Set switches to the black.</u></p> 	<p><u>2) Communication Settings</u></p> <p>Baud Rate :19200bps Data Bit :7 Bits Stop Bit :2 Bits Parity Check :Yes Parity Setting Even/Odd :Even Write Possible in RUN Mode: Possible Sum Check :Yes</p>
<p><u>3) Node Settings</u></p> <p>STATION NO</p> 	<p><u>3) Node Settings</u></p> <p>Station Number: 0</p>

2-2 [Connecting via Computer Link Unit A1SJ71UC24, A1SJ71UC24-R4]

<p>1) Mode Setup</p> <p>MODE</p> 	<p>1) Mode Setup</p> <p>8 (Format 4 Protocol)</p>
<p>2) Communication Settings</p> <p>Set switches to the black.</p> 	<p>2) Communication Settings</p> <p>Baud Rate :19200bps Data Bit :7 Bits Stop Bit :2 Bits Parity Check :Yes Parity Setting Even/Odd :Even Write Possible in RUN Mode: Possible Sum Check :Yes</p>
<p>3) Node Settings</p> <p>STATION NO</p> 	<p>3) Node Settings</p> <p>Station Number: 0</p>