

## Mitsubishi <1> Mitsubishi Electric Corporation

### A Series (AnU/AnA) + Link Unit (Large) Connection

#### **Selecting PLC Type**

Start up GP-PRO /PBIII.

Select the following PLC Type when creating the project file.



## Communication Setting Sample

GP Setup		Computer Link Unit Settings	
Baud Rate	19200 bps	Baud Rate	19200 bps
Data Length	7 bits	Data Bit	7 bits
Stop Bit	2 bits	Stop Bit	2 bits
Parity Bit	Even	Parity Check Parity setting even/odd	Yes Even
Data Flow Control	ER Control	---	
Communication Format (RS-232C)	RS-232C	Channel Setup Mode Setup (RS-232C)	RS-232C 4 (Format 4 protocol)
Communication Format (RS-422)	4-wire type	Channel Setup Mode Setup (RS-422)	RS-422 8 (Format 4 protocol)
---		Write possible in RUN mode.	Possible
---		Sum Check	Yes
---		Enable Sender Termination Resistor *1	Yes
---		Enable Receiver Termination Resistor *1	Yes
Unit No.	0	Station Number	0

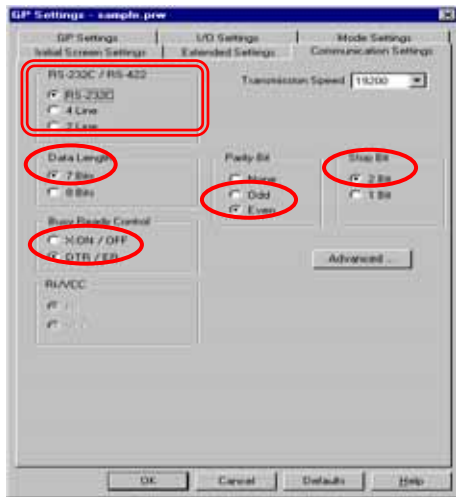
\* 1: AJ71UC24 does not have this setting.

## Communication Settings [GP]

1 [GP-PRO/PB C-Package Setting]

Select [GP Setup] on Project Manager.

### 1) Communication Settings

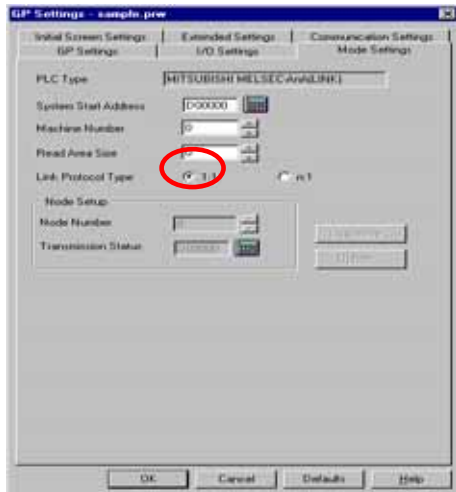


### 1) Communication Settings

Transmission Speed : 19200bps  
 Data Length : 7 Bits  
 Stop Bit: 2 Bits  
 Parity Bit: Even  
 Busy Ready Control : DTR / ER  
 RS-232C/ RS-422  
 RS-232C Connection: RS-232C  
 RS-422 Connection: 4 Line

\* Select one in  depending on the communication method.

### 2) Mode Settings



### 2) Mode Settings

System Start Address: Arbitrary Address  
 Machine No.: 0  
 Link Protocol Type: 1:1

Select [Transfer] --> [Setup] --> [Transfer Settings].

### 3) Transfer Settings

**Transfer Settings**

**Send Information**

- Download Information
- GP System Screen
- Filing Data(CF card)
- Data Trans Func CSV Data(CF card)

**Transfer Method**

- Send All Screens
- Automatically Send Changed Screens
- Send User Selected Screens

**Transfer Mode**

- Preparation for a transfer and a transfer are made simultaneous.
- It is transferred after preparation for a transfer is finished.

**Setup**

- Automatic Setup
- Force System Setup
- Do NOT Perform Setup

**Use Extended Program :**

- Simulation

**System Screen**

**Setup CFG file :**

- English
- Japanese
- Selection

C:\Program Files\pro-face\ProPBWin\protocol\

**Communications Port**

- COM
- Ethernet
- Ethernet: Auto Acquisition
- Memory Loader

Comm Port: COM1 Retry Count: 5

Baud Rate: 115.2K (bps)

IP Address: 0. 0. 0. 0 Port: 8000

3) Transfer Settings GP System Settings: Checked

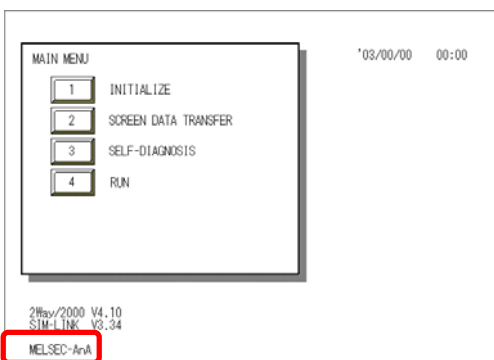
Transfer to GP after settings completed.

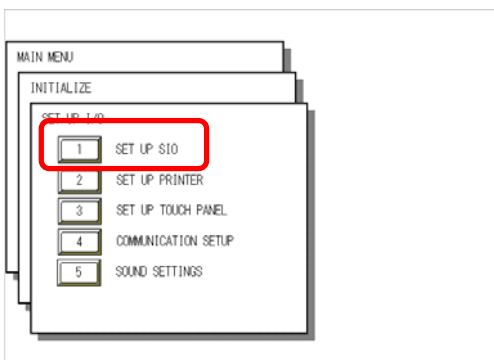
## 2 [GP Settings]

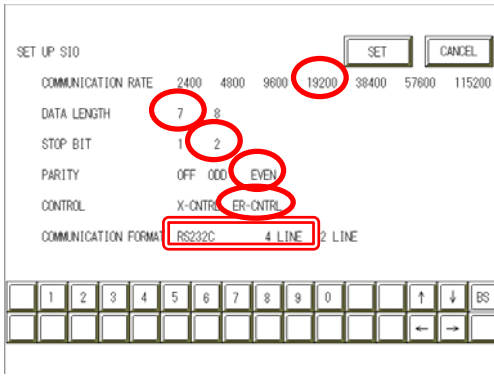
- Displaying Setting Screen -

Touch the left top of the screen within 10 second after powering on.

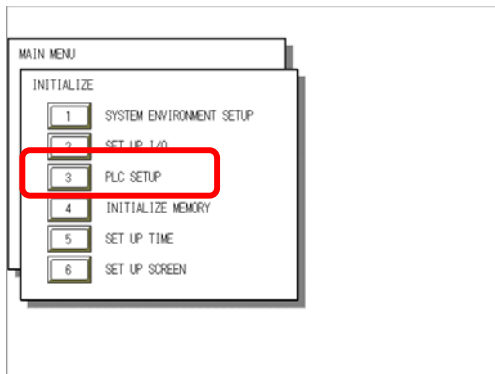
Or touch the right top and the right bottom of the screen at the same time. Keep 2 points touched and touch the left bottom. The menu bar will display on the bottom of the screen. Then touch [Offline].

<p><u>1) Checking GP Type</u></p> 	<p><u>1) Checking GP Type</u></p> <p>If you have selected Mitsubishi MELSEC-AnA (LINK), the following will be shown.</p> <p>“MELSEC-AnA”</p>
--	--

<p><u>2) Communication Settings</u></p> 	<p><u>2) Communication Settings</u></p> <p>[MAIN MENU] ↓ [INITIALIZE] ↓ [SET UP I/O] ↓ [SET UP SIO]</p>
---	---

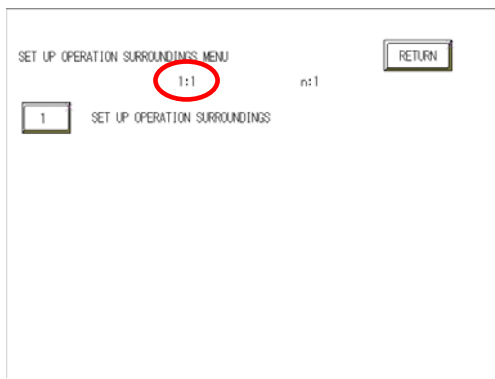
	<p>Communication Rate: 19200bps Data Length: 7 Bits Stop Bit: 2 Bits Parity: Even Control: ER Cntrl Communication Format RS-232C Connection: RS-232C RS-422 Connection: 4 Line</p> <p>* Select one in <input type="text"/> .</p>
---	--

### 3) Setting up Operation Surroundings

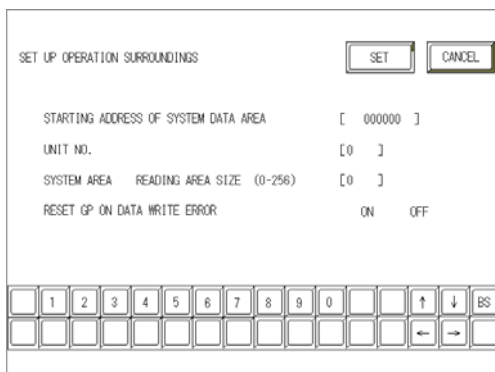


### 3) Setting up Operation Surroundings

[MAIN MENU]  
↓  
[INITIALIZE]  
↓  
[PLC SETUP]  
↓  
[PLC SETUP]



SET UP OPERATION SURROUNDINGS MENU:  
1:1

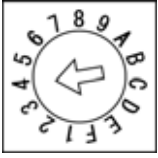
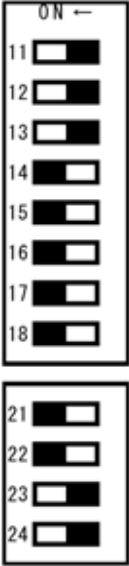
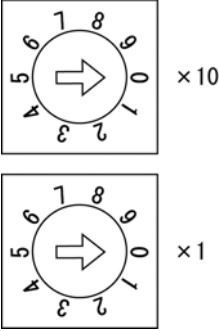


Starting Address of System Data Area:  
Arbitrary Address  
Unit No.: 0

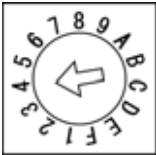
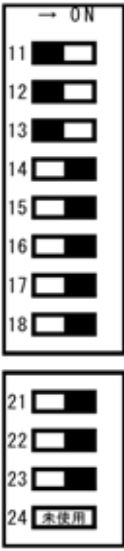
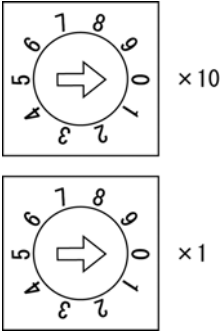
## Communication Settings [PLC]

### 1. RS-232C Connection

#### 1-1 [Connecting via Computer Link Unit AJ71C24-S6 / AJ71C24-S8]

<p>1) <u>Mode Setup</u></p> <p>MODE </p>	<p>1) <u>Mode Setup</u></p> <p>4 (Format 4 Protocol)</p>
<p>2) <u>Communication Settings</u></p> <p><b>Set switches to the black.</b></p> 	<p>2) <u>Communication Settings</u></p> <p>Baud Rate :19200bps            Data Bit :7 Bits            Stop Bit :2 Bits            Parity Check :Yes            Parity Setting Even/Odd :Even            Write Possible in RUN Mode: Possible            Sum Check :Yes            Enable Sender Termination Resistor: Yes            Enable Receiver Termination Resistor: Yes</p>
<p>3) <u>Node Settings</u></p> <p>STATION NO</p> 	<p>3) <u>Node Settings</u></p> <p>Station Number: 0</p>


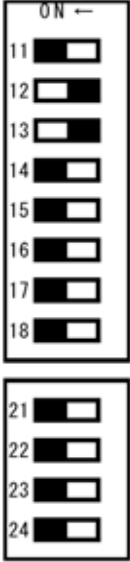
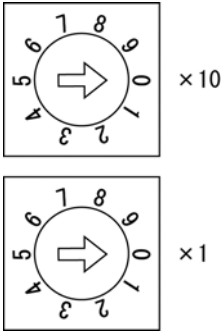
1-2 [Connecting via Computer Link Unit AJ71UC24]

<p>1) Mode Setup</p> <p>MODE</p> 	<p>1) Mode Setup</p> <p>4 (Format 4 Protocol)</p>
<p>2) Communication Settings</p> <p><b>Set switches to the black.</b></p> 	<p>2) Communication Settings</p> <p>Baud Rate :19200bps</p> <p>Data Bit :7 Bits</p> <p>Stop Bit :2 Bits</p> <p>Parity Check :Yes</p> <p>Parity Setting Even/Odd :Even</p> <p>Write Possible in RUN Mode: Possible</p> <p>Sum Check :Yes</p>
<p>3) Node Settings</p> <p>STATION NO</p> 	<p>3) Node Settings</p> <p>Station Number: 0</p>


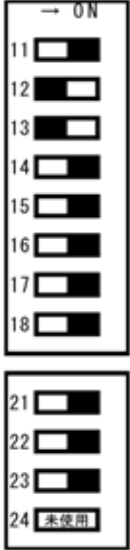
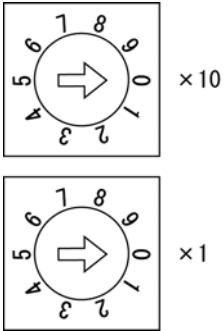


## 2. RS-422 Connection

### 2-1 [Connecting via Computer Link Unit AJ71C24-S6 / AJ71C24-S8]

<p>1) <u>Mode Setup</u></p> <p>MODE</p> 	<p>1) <u>Mode Setup</u></p> <p>8 (Format 4 Protocol)</p>
<p>2) <u>Communication Settings</u></p> <p><b>Set switches to the black.</b></p> 	<p>2) <u>Communication Settings</u></p> <p>Baud Rate :19200bps</p> <p>Data Bit :7 Bits</p> <p>Stop Bit :2 Bits</p> <p>Parity Check :Yes</p> <p>Parity Setting Even/Odd :Even</p> <p>Write Possible in RUN Mode: Possible</p> <p>Sum Check :Yes</p> <p>Enable Sender Termination Resistor: Yes</p> <p>Enable Receiver Termination Resistor: Yes</p>
<p>3) <u>Node Settings</u></p> <p>STATION NO</p> 	<p>3) <u>Node Settings</u></p> <p>Station Number: 0</p>

2-2 [Connecting via Computer Link Unit AJ71UC24]

<p>1) Mode Setup</p> <p>MODE</p> 	<p>1) Mode Setup</p> <p>8 (Format 4 Protocol)</p>
<p>2) Communication Settings</p> <p><b>Set switches to the black.</b></p> 	<p>2) Communication Settings</p> <p>Baud Rate :19200bps</p> <p>Data Bit :7 Bits</p> <p>Stop Bit :2 Bits</p> <p>Parity Check :Yes</p> <p>Parity Setting Even/Odd :Even</p> <p>Write Possible in RUN Mode: Possible</p> <p>Sum Check :Yes</p>
<p>3) Node Settings</p> <p>STATION NO</p> 	<p>3) Node Settings</p> <p>Station Number: 0</p>