

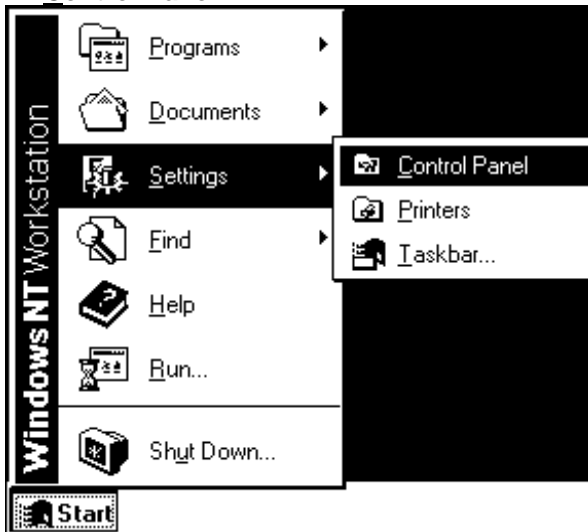
## PL-5900 SERIES

### Windows NT DISPLAY DRIVER INSTALLATION INSTRUCTIONS

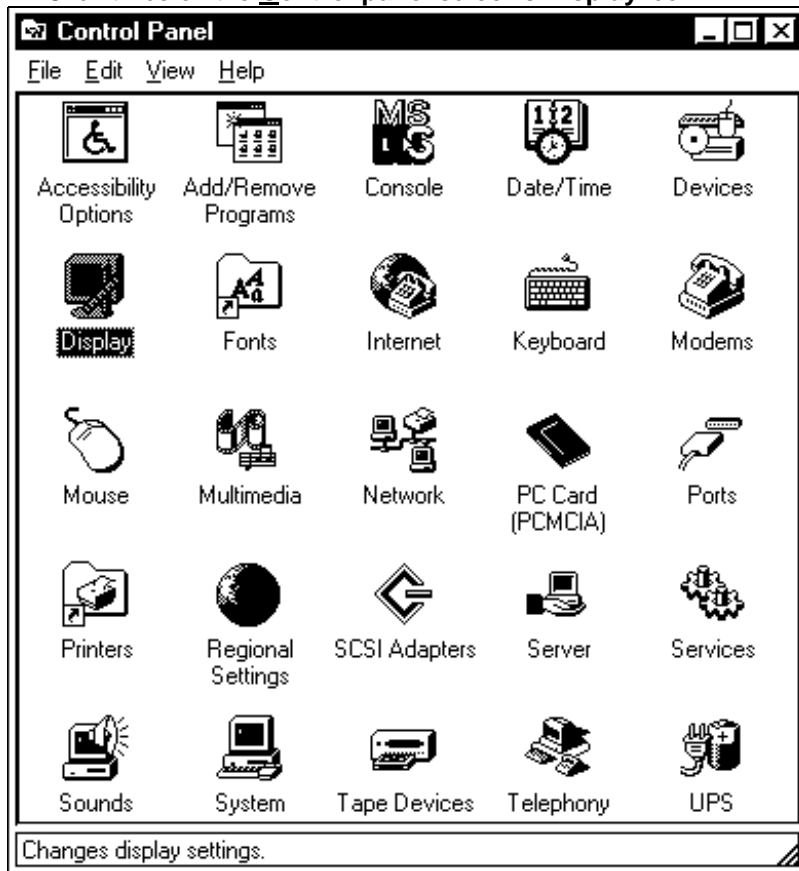
Digital's PL-5900 Series Windows NT Display Driver uses the PL-5900's built-in Graphic Accelerator function to speed up display area drawing operation. To install this Windows NT Display Driver, read the following instructions carefully.

Note: Be sure to install the Windows NT Service Pack 3.0 software prior to installing the PL-5900 unit's Display Driver.

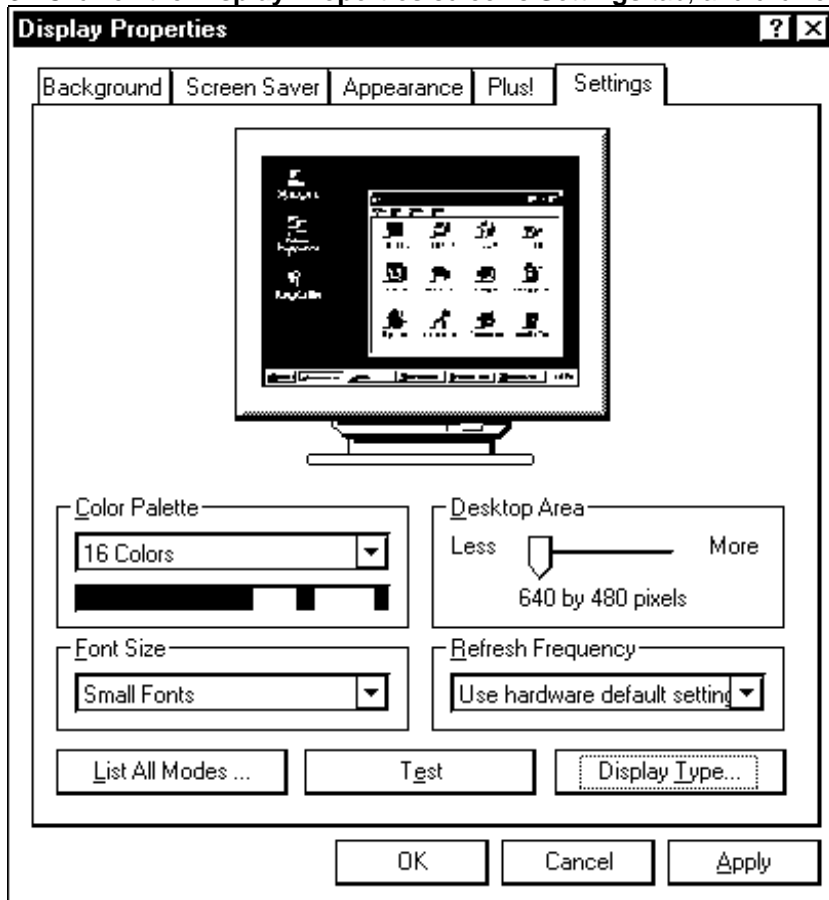
1. Click on the Windows NT main screen's **Start** button, select **Settings**, and then select **Control Panel**.



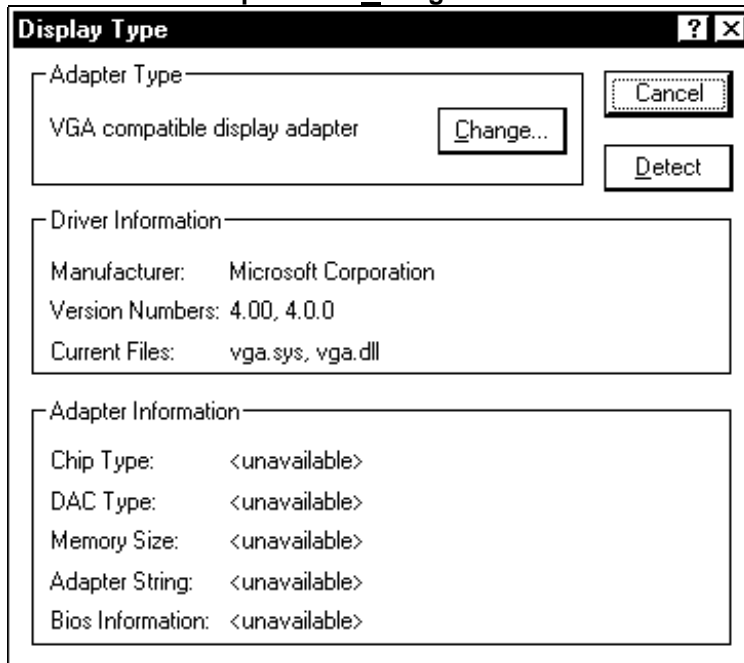
2. Click twice on the **Control panel** screen's **Display** icon.



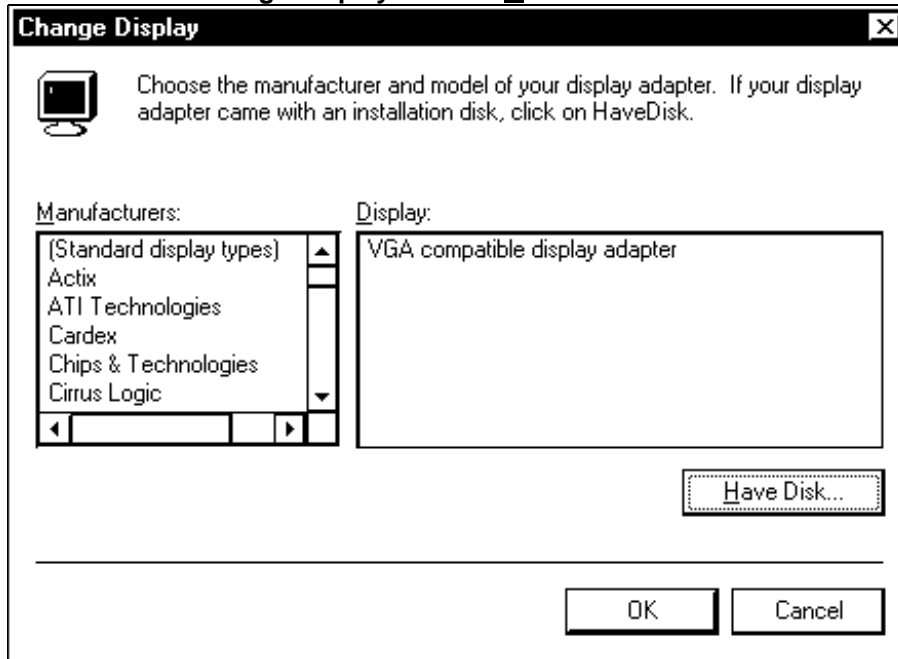
3. Click on the **Display Properties** screen's **Settings** tab, and click on **Display Type**.



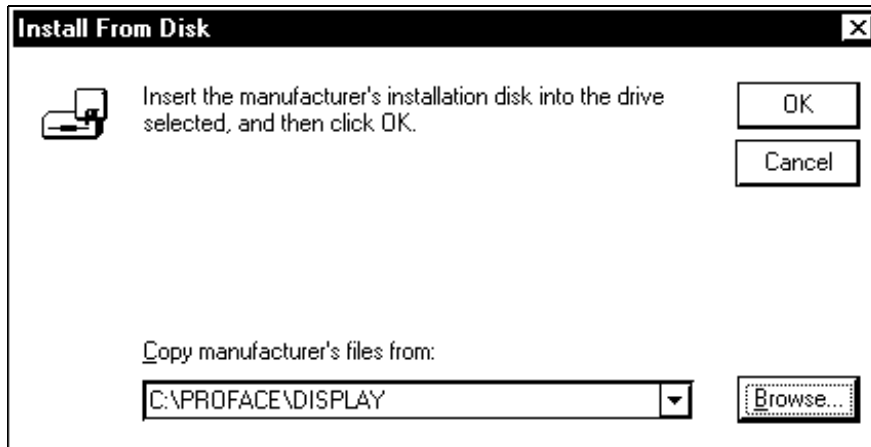
4. Click on the **Adapter** tab's **Change** button.



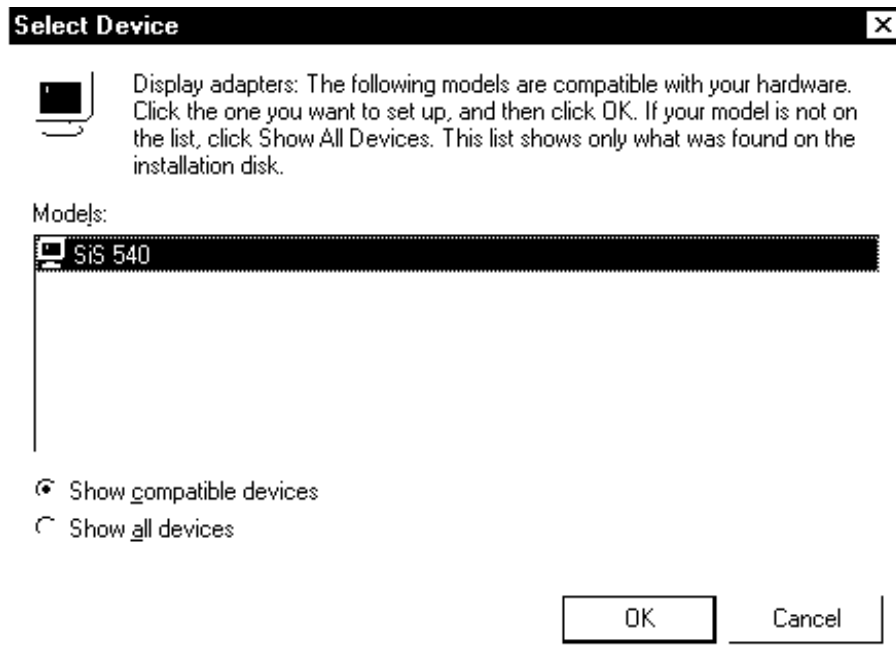
5. Click on the **Change Display** screen's **Have Disk** button.



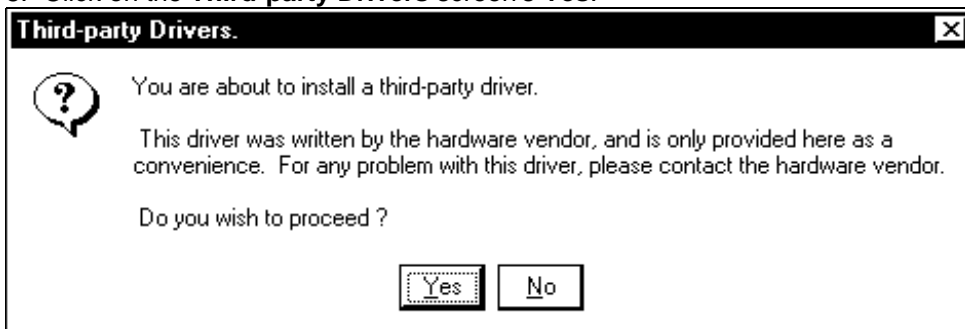
6. Enter **C:\PROFACE\DISPLAY** in the box beneath **Copy manufacturer's files**, then click on the **OK** button.



7. Next, in the **Select Device** screen select SiS540, and click on the **OK** button.



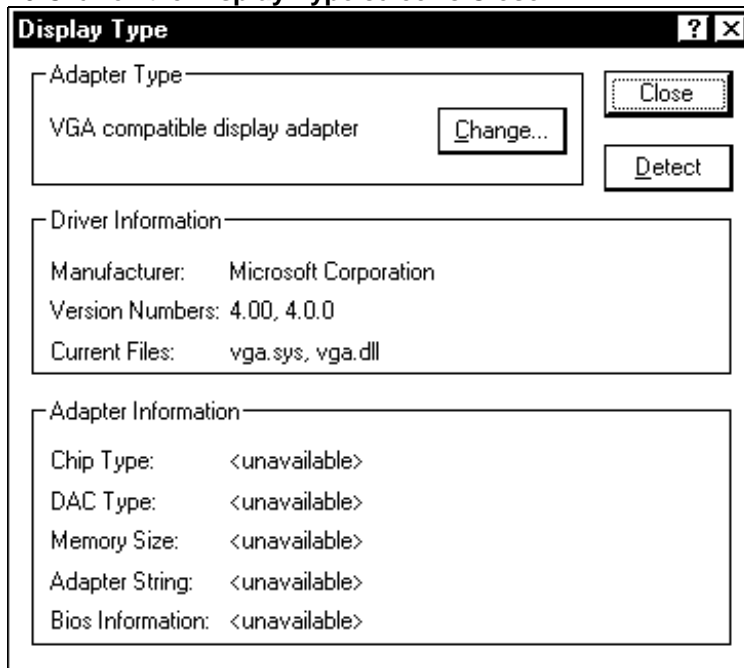
8. Click on the **Third-party Drivers** screen's **Yes**.



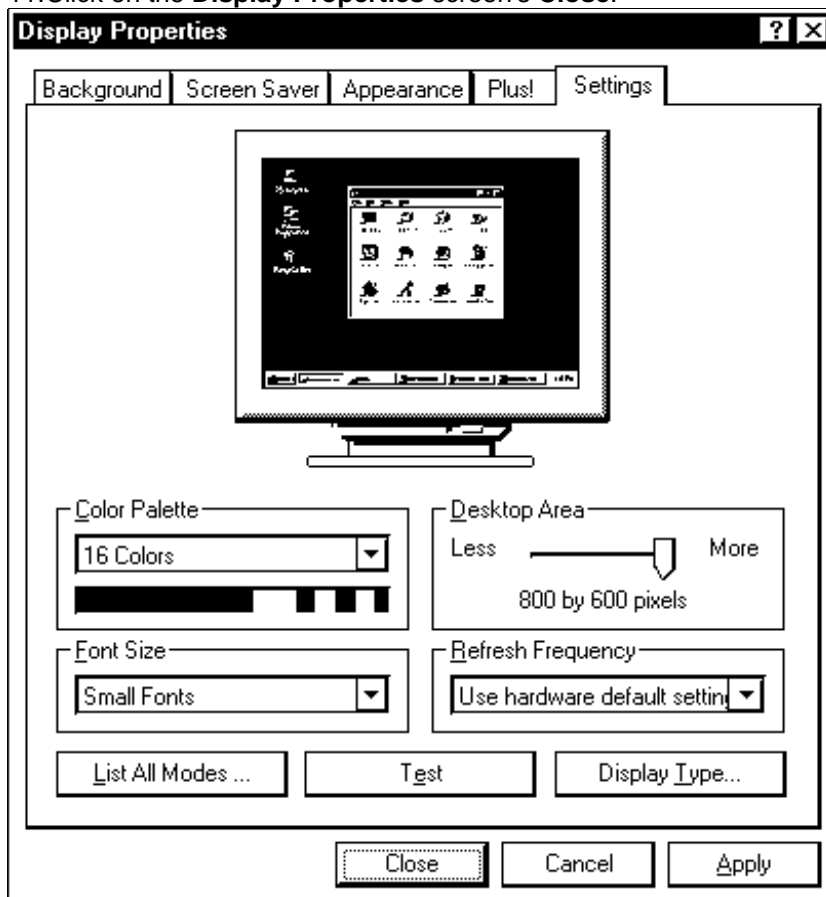
9. Click on the **Installing Driver** screen's **OK**.



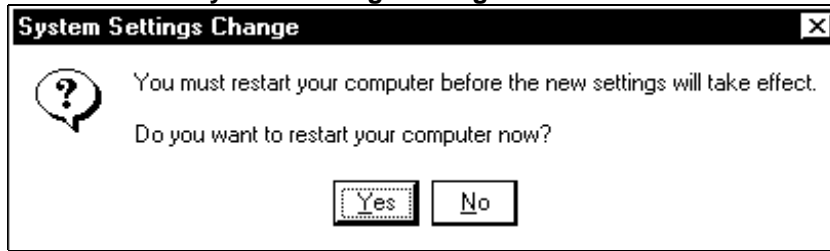
10. Click on the **Display Type** screen's **Close**.



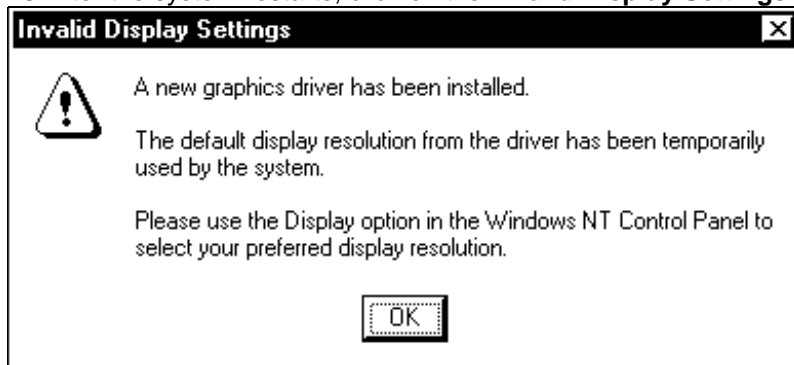
11. Click on the **Display Properties** screen's **Close**.



12. Click on the **System Settings Change** screen's **Yes** to restart the Windows NT system.



13. After the system restarts, click on the **Invalid Display Settings** screen's **OK**.



Now, the PL-5900 Series' built-in Graphic Accelerator can use the high-speed drawing function.