

**Comes equipped with analog I/O and temperature input**

**Easy to:**

- Control pressure and flow
- Set positioning
- Monitor temperature, etc.



H1: Sink Type  
H2: Source Type

**Type H-AD:**

Built-in 32-point DIO + 2-point AD/1-point DA

**Type H-ADT:**

Built-in 32-point DIO + 2-point AD/2-point DA + 3-point Thermocouple Input

**Type H-ADP:**

Built-in 32-point DIO + 2-point AD/2-point DA + 2-point Pt100 Input

\* Source output type also available. Refer to page 5 for model details.

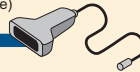


**Data Transfer Cable**  
GPW-CB02



**LT Series Screen Development Software**  
**LT Editor Ver. 2.0**  
GLCLT-ED01W-V20 or higher

**Bar Code Reader (Commercial Type)**  
**Serial Printer**



**High-speed Counter Input**



**Sensor**

**Pulse/PWM Output**

- Servo motors
- Stepping motors
- Laser
- Manual pulsers, etc.



**Thermocouple ( J Type, K Type Input)**

**Type H-ADT Only**

**Pt100 Input**

**Type H-ADP Only**

- Temperature sensors
- Temperature controls
- Constant temperature tanks, etc.



**Analog Input** [ LT Type H-AD Input (2ch) Output (2ch) ]

**Analog Output** [ LT Type H-ADT/ADP Input (2ch) Output (1ch) ]

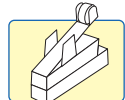
- Pressure meters
- Flow gauges
- Temperature meters, etc.



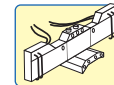
**Equipped with DC24V 32-point input/output**



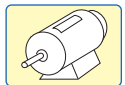
**Signal Tower Indicators, LEDs**



**Limit switches, Photocouplers**



**Solenoid valves**



**Motors, Inverters, Servos**