

Reduces wiring
and expands
system scale...

Connect up to 1008 I/O points, over
400 meters using 2 channels, each
with up to 63 nodes (6Mbps, 2ch) with
Remoto I/O (Flex Network) System



Type B:
Built-in Remote I/O (Flex Network)

Maximum 1008 I/O Points

Remote I/O (Flex Network) System

32-point Sink/Source Input,
32-point Sink-type Transistor Output

FN-XY32SKS41
(Spring Clamp Connector)



32-point
Sink/Source Input



FN-X32TS41

16-point
Sink/Source Input,
16-point Sink
Transistor Output



FN-XY16SK41

16-point
Sink/Source Input,
16-point Source
Transistor Output



FN-XY16SC41

16-point
Sink Input



FN-X16TS41

8-point
Sink/Source Input,
8-point Sink
Transistor Output



FN-XY08TS41

8-point Relay
Output/1 Common



FN-Y08RL41

16-point
Sink Output



FN-Y16SK41

16-point
Source Output



FN-Y16SC41

4-channel
Analog Input Unit



FN-AD04AH11*1

4-channel Analog
Output Unit



FN-DA04AH11*1

High-speed
Counter Unit



FN-HC10SK41

Single-axis
Positioning Unit



FN-PC10SK41

*1 4-channel Analog Input / Output Units are not CE
marked, UL/c-UL (CSA) listed products.

200m (6Mbps) x 2ch
100m (12Mbps) x 2ch

Flex Network Communication Cable

10m: FN-CABLE2010-31-MS
50m: FN-CABLE2050-31-MS
200m: FN-CABLE2200-31-MS

Data Transfer Cable

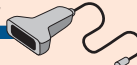
GPW-CB02



LT Series Screen Development Software
LT Editor

GLCLT-ED01W-V10 or higher

Bar Code Reader/Serial Printer



Use the LT's
built-in Remote
I/O (Flex Network)
together with

- Single-axis Positioning Unit
- High-speed Counter Unit
- Analog Units
- DIO Units