

Integrates easily into small-sized equipment

16 input points and 16 output points make for easy system integration into your current system

Type A1

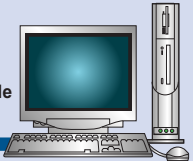
Type A1:
Built-in DIO (Sink output) Type

Type A2

Type A2:
Built-in DIO (Source output) Type

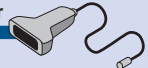


Data Transfer Cable
GPW-CB02

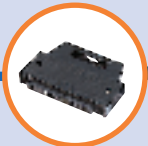


LT Series Screen Development Software
LT Editor
GLCLT-ED01W-V10 or higher

Bar Code Reader/Serial Printer



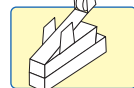
Following its release, only the worldwide version will be marketed.



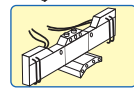
Connectors
GLC100-DIOCN01 [Solder type]
GLC-DIOCN02 [Ribbon type (Clamp lock)]
Open-end DIO Cable
GLC000-DIOCB11-MS [Sink/Source type]
CGP070-1D11-M [Sink type]



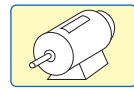
Signal Tower Indicators, LEDs



Limit switches, Photocouplers



Solenoid valves



Motors, Inverters, Servos

Equipped with DC24V 32-point input/output

Remember this when comparing I/O points!

	PLC with 50 I/O points	LT Series (Type A/B+) with 32 I/O points
I/O points used for panel operation and display	12 input points *1 9 output points *2	Built-in graphic display and touch panel replace switches and lamps.
I/O points used for equipment control	29 points	32 points All available for device control!

*1 Used for switches, such as manual/auto (2 points), auto start, stop, stop, buzzer, alarm reset, jog forward, jog backward, raise, lower, continuous operation, and material replenishment complete.

*2 Used for lamps indicating auto operation, motor overload, error, lower error, stop error, pneumatic error, material jam, and no material.