



## PRODUCT FEATURE

# Xycom Automation intros embedded control, OI, data collection, connectivity solutions

**Tom Polischuk**  
Senior Technical Editor



Xycom Automation, which was acquired this past February by Pro-face America, has introduced an array of integrated and stand-alone software and hardware products that offer solutions for embedded control, operator interface (OI), data collection, and connectivity. These include an industrial PC that supports remote display options; a VME-based processor module; a one-box solution that integrates information connectivity, OI, and control; and software packages for OI, control, data collection, and Web connectivity.

### Embedded control solution for VME

A key feature of Xycom's new XVME-660 processor module is the addition of Industry Pack and PCI Mezzanine Card expansion sites, which provide connectivity to a wide variety of real-world I/O devices with no additional carrier board. This two-slot 6U VMEbus processor module includes a 566 MHz Celeron™ or 600 MHz Pentium® CPU, PCI EIDE, Ultra SCSI, Ethernet controller, one USB port, and serial, parallel, and PS/2 ports. Combining this board with Xycom's new XVME-979 mass storage module provides users with a complete PC in three chassis slots.



### Industrial PC with remote display

The 1510 Industrial PC separates the display from the PC, serving as a node box with up to a 700 MHz Pentium



III and a ten-slot passive backplane. Two PICMG slots are dedicated to the CPU and eight are available for expansion, including four full-length ISA, three full-length PCI, and one half-length PCI. The system comes with MS-DOS, Windows® 95, or NT®, and features a 10/100 Mbits/s Ethernet controller, AGP video controller with 4 Mbytes of video RAM, a PCI IDE controller, serial, parallel, and PS/2 ports, and floppy and CD-ROM drives. It has UL, cUL, FCC, and CE certifications.

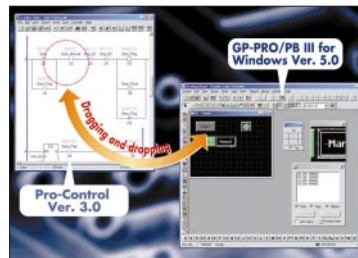
(counterclockwise from top): The 1510 Industrial PC is a node box that supports a remote monitor. The GLC2400T integrates information connectivity, OI, and I/O control. GP-PRO/PB III supports the latest GLC2000 series products with control logic developed using the Pro-Control v3.0 IEC 61131-3-compatible ladder logic editor.

Pro-face's GLC2400T integrates operator interface, control, and network connectivity. With 10BaseT Ethernet, Compact Flash, and a remote Flex Network I/O system, it provides a one-box solution for system operation, I/O control, and information management for a wide range of production applications. The high-speed Flex Network distributed I/O system provides reduced I/O connection wiring with a maximum of 1008 I/O points and 63 nodes on two network channels. It also provides up to 12 Mbits/s and up to a 400-m connection distance. The GLC2400T includes a 7.4-in. TFT color display and a graphic logic controller, and is UL, cUL, and CE certified.

### Software to meet your needs

Xycom has also introduced new software for OI, control, data collection, and Web connectivity. GP-PRO/PB III for Windows v5.0 screen development software supports the latest GLC2000 series products with control logic developed using Pro-Control v3.0. With GP-PRO/PB III, users can download screens via Ethernet, Compact

Flash, or a serial port to the GLC. Pro-Control v3.0 is an IEC 61131-3-compatible ladder logic editor for the Pro-face GLC product line. It supports online editing and monitoring of logic via Ethernet and provides more than 45 ladder instructions. Data collection from the GLC2000 series systems is managed by Pro-Server with Pro-Studio v3.0, which allows communication between multiple GLCs and any remote PCs via Ethernet. The



software combination supports download of recipes from Microsoft Access and Excel, ADO and SQL application interfaces, and DDE and DLL for open connectivity. With GP-Web v1.0, users can monitor GLC2000 series OIs from a remote PC via the Internet/intranet. This feature allows OEMs or systems integrators to remotely view applications

for customer support via the Internet. Since the operation of this software is fully menu driven, there is no need for special programming.—Xycom Automation, Inc., 750 North Maple Road., Saline, MI 48176, 800-289-9266.

Circle 190 on Control Solutions RS Card.

### One stop: Information connectivity, OI, and control

Answering the increasing demand for information networking,