

HVAC



[Actuator 1](#)



[Actuator 2](#)



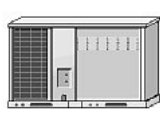
[Air capture hood](#)



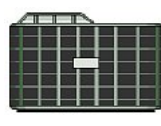
[Air cleaner](#)



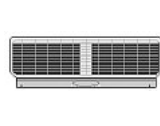
[Air conditioner 1](#)



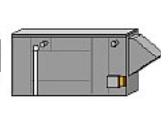
[Air conditioner 2](#)



[Air conditioner 3](#)



[Air curtain](#)



[Air handling unit 1](#)



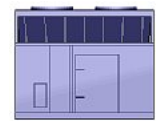
[Air handling unit 2](#)



[Air handling unit 3](#)



[Air handling unit 4](#)



[Air handling unit 5](#)



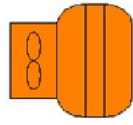
[Boyz in the vent hood](#)



[BTU totalizer](#)



[Building chiller](#)



[Building heat make-up unit](#)



[Carbon filter](#)



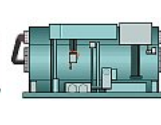
[Chilled water cooling coils](#)



[Chiller system](#)



[Chiller](#)



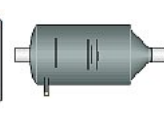
[Chiller-heater](#)



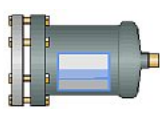
[Commercial storage tank](#)



[Condenser](#)



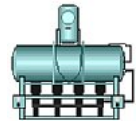
[Contaminant barrier 1](#)



[Contaminant barrier 2](#)



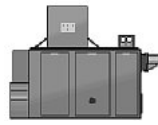
[Deaerator 1](#)



[Deaerator 2](#)



[Deaerator 3](#)



[Dehumidifier](#)



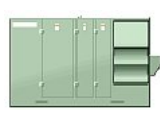
[Diffuser](#)



[Double damper](#)



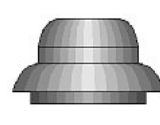
[Electronic flowhood](#)



[Energy-recovery ventilator 1](#)



[Energy-recovery ventilator 2](#)



[Exhaust fan](#)



[Expansion joint](#)



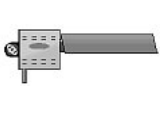
[Furnace](#)



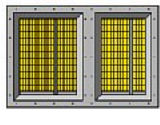
[Gas-electric wall-mount](#)



[Gas-fired infrared heater 1](#)



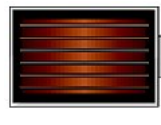
[Gas-fired infrared heater 2](#)



[Grilled heat exchanger](#)



[Heat pump](#)



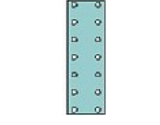
[Heater damper](#)



[Heating and cooling unit 1](#)



[Heating and cooling unit 2](#)



[Heating coil](#)



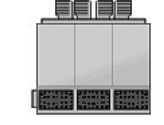
[Heavy-duty water heater](#)



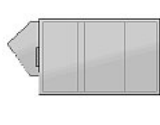
[High-velocity exhaust system](#)



[HVAC unit](#)



[Indirect fired industrial heater 1](#)



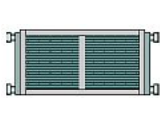
[Indirect fired industrial heater 2](#)



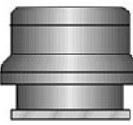
[Portable air conditioner](#)



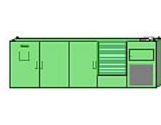
[Pressurization unit](#)



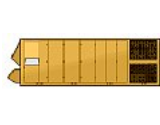
[Radiator coil](#)



[Roof vent](#)



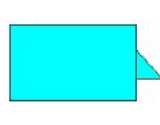
[Rooftop air conditioner](#)



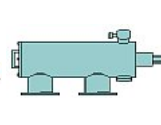
[Rooftop unit](#)



[Round damper](#)



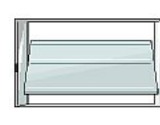
[Simple air handling unit](#)



[Simple filter 1](#)



[Simple filter 2](#)



[Single damper](#)



[Thermal purge unit](#)



[Triple damper \(closed\)](#)

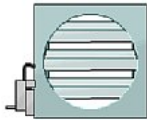
HVAC



Triple damper (fully open)



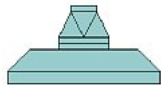
Triple damper (partially open)



Triple damper with circular opening



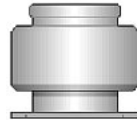
Unit ventilator



Vent hood



Ventilation system



Ventilator



Water heater



Window air conditioner