

With GP-Pro EX

INDEX

- 01. Debug without opening the control panel
- 02. Check connected device values during operation
- 03. Use USB memory sticks to make maintenance trouble-free
- 04. Check which operator performed each operation
- 05. Rapidly classify connected device error information

■ For Screen Creators

Techniques for Time-saving debugging



01 Debug without opening the operator cabinet

Solution Rating

★★★★★ 90%

Q

QUESTION ≪≪

Do you have to open the operator cabinet to connect the PC and PLC each time you debug a PLC ladder program?

A

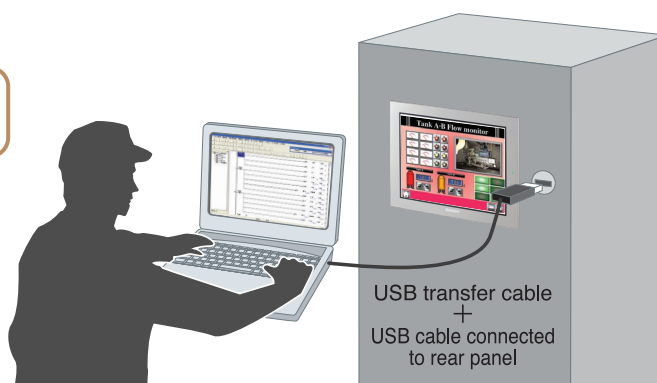
Pro-face's solution ≪≪

Pro-face lets you debug PLC ladder programs by connecting a USB transfer cable to the display, with no need to open the operator cabinet.

Pro-face offers RAPID DEBUGGING

USB connection from the panel enables rapid debugging.

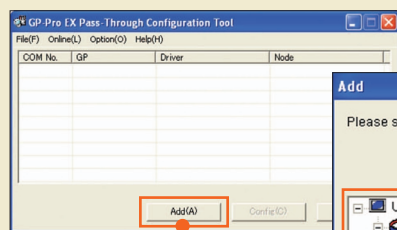
Pass-through connectivity lets you debug devices connected to the display.



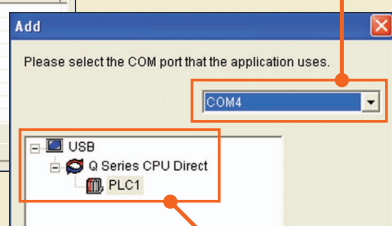
USB transfer cable
+
USB cable connected
to rear panel

Easy setting procedures

Pass-through connection

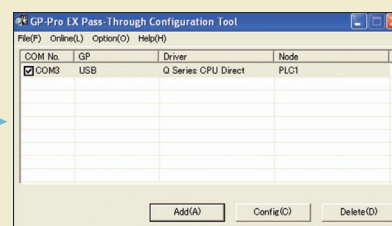


1 Click [Add].



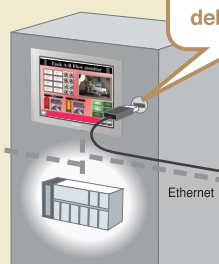
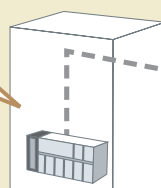
2 Select the virtual COM port to use.

3 Select the connected device.



Debugging

You can debug even when the control panel is mounted remotely.



Front-panel USB connection lets you debug without opening to open the panel.

See the manual for information on connected devices. The pass-through function must be installed beforehand.



<http://www.pro-face.com/otasuke/download/exdriver/psth/>

02 Check connected device values during operation

Solution Rating

★★★★★ 100%

Q

QUESTION ≪≪

Do you have to create separate screens just to check the current values of connected devices?

A

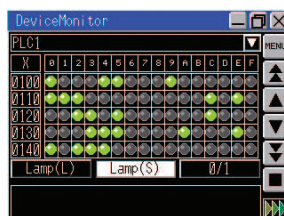
Pro-face's solution ≪≪

Pro-face lets you monitor the values of connected devices of the manufacturer or model, without having to create screens for monitoring.

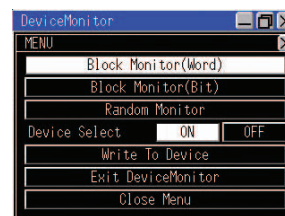
Pro-face offers DEVICE VALUE MONITORING

Monitor words or bits in a single screen.
Monitor selected device values. Write values in user-specified addresses, making debugging simple.

Display all the bit statuses in a single screen.

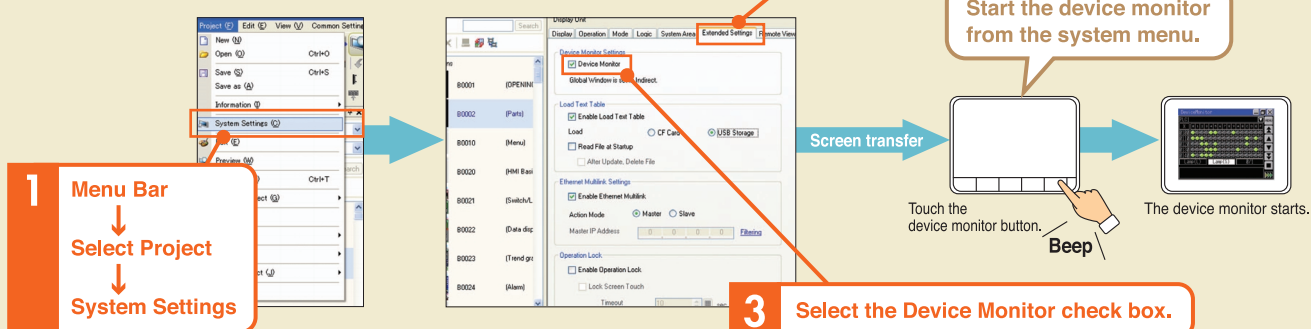


Display the word/bit addresses you want to monitor.

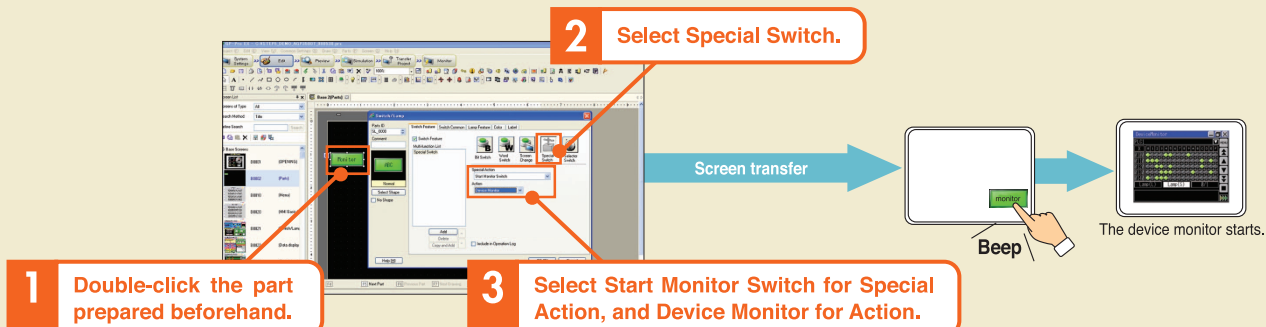


Easy setting procedures

Device monitoring



Starting the device monitor from a switch



Display the device monitor in a window while displaying the regular screen. Debug programs while checking the screen.

03 Use USB memory sticks to make maintenance trouble-free

Solution Rating



90%

Q

QUESTION <<<

Do you always have to bring a PC to the work site?

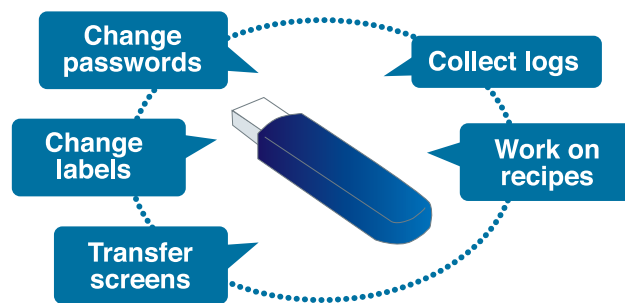
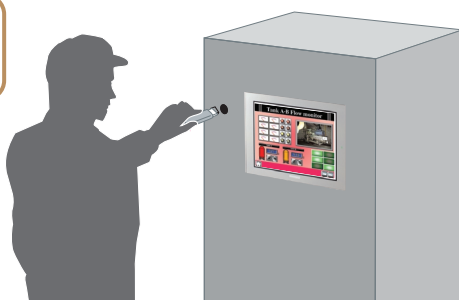
A

Pro-face's solution <<<

Pro-face gives you complete freedom to change labels, change passwords, transfer screens and collect logs with just a USB memory stick. And since no drawing software is needed for these functions, anyone can perform them.

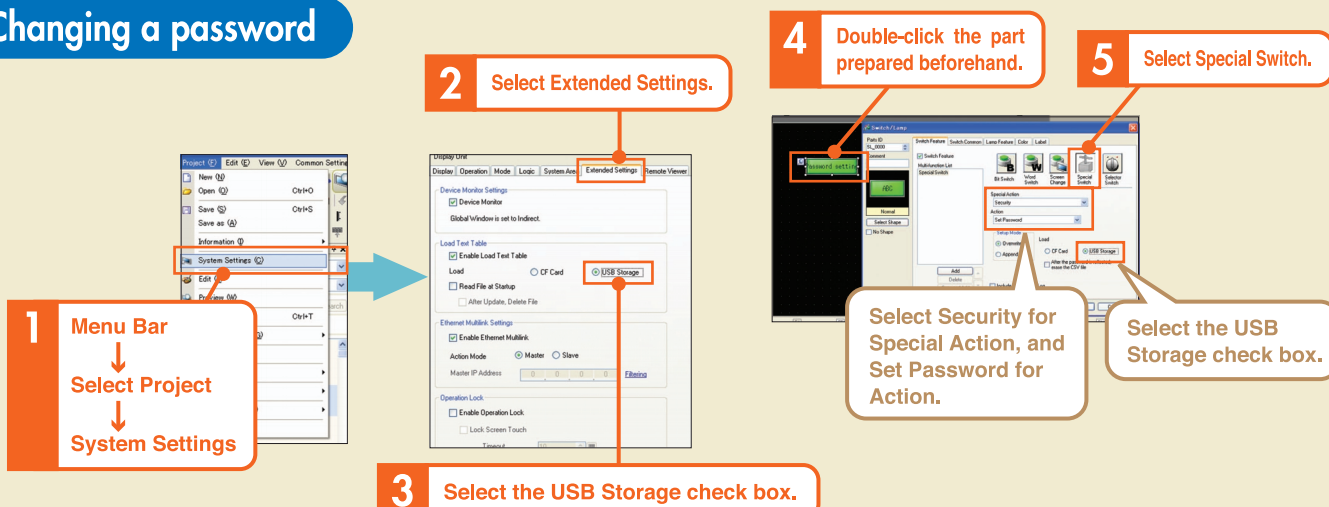
Pro-face offers WORK-SITE CONTROL WITHOUT A PC

Just take a USB memory stick to the work site.

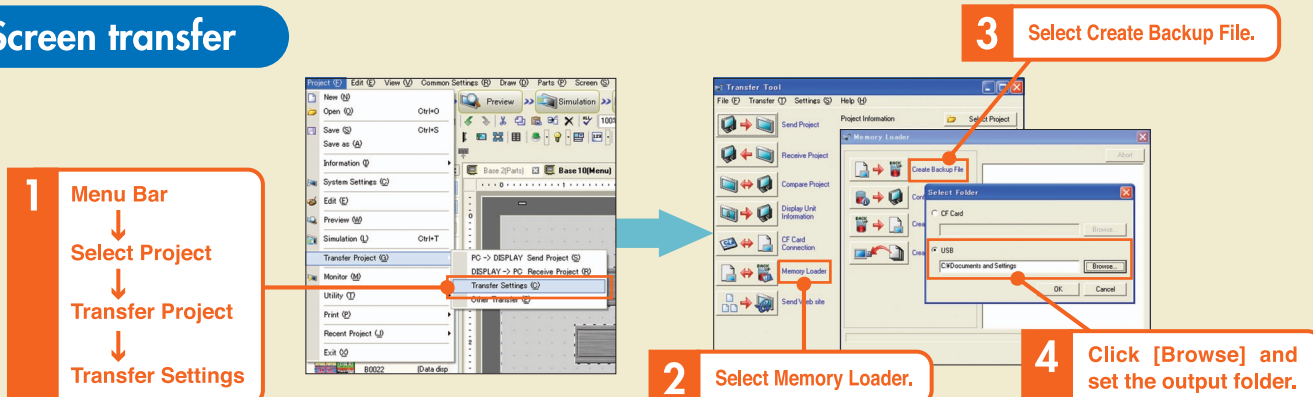


Easy operation

Changing a password



Screen transfer



04 Check which operator performed each operation

Solution Rating

★★★★★ 100%

Q

QUESTION ≪≪

Do you have trouble finding problem causes?

A

Pro-face's solution ≪≪

Pro-face lets you collect operation logs. You can use IDs and passwords to determine who carried out each operation, when it was carried out, and what was done. This feature lets you pinpoint causes of problems rapidly.

Pro-face offers OPERATION LOG COLLECTION

Acquire operator operation logs for individual parts, and export the data of just the required portions to make management simple.

	A	B	C	D	E	F	G	H	I	J	
1	Number	Date	Time	User ID	Level	Screen	Parts ID	Comment	Action	Address	Sub
2	1	2007/9/7	20:02:56		0	BS30	SL_0000	Log save	Bit Mon	[JEMMLINK]390000	OFF
3	2	2007/9/7	20:02:56		0	BS30	SL_0000	Log save	Bit Mon	[JEMMLINK]390000	OFF
4	3	2007/9/7	20:03:11 AAA		1	BS31	SL_0007	Alarm Open/Bit Rvs		[JEMMLINK]JSR1150103	
5	4	2007/9/7	20:03:11 AAA		1	BS31	SL_0008	Alarm Open/Bit Rvs		[JEMMLINK]JSR1152104	
6	5	2007/9/7	20:03:11 AAA		1	BS31	SL_0008	Alarm Open/Bit Rvs		[JEMMLINK]JSR1150103	
7	6	2007/9/7	20:03:14 AAA		1	BS31	SL_0003	Stop SW	Bit Rat	[JEMMLINK]39002000	
8	7	2007/9/7	20:03:24 AAA		1	BS31	DD_0017	Task 1 Inp Data		[JEMMLINK]JSR1150103	
9	8	2007/9/7	20:03:24 AAA		1	BS31	DD_0016	Task 2 Inp Data		[JEMMLINK]JSR20001	
10	9	2007/9/7	20:03:27 AAA		1	BS31	DD_0017	Task 3 Inp Data		[JEMMLINK]JSR20002	
11	10	2007/9/7	20:03:28 AAA		1	BS31	SL_0003	Stop SW	Bit Rat	[JEMMLINK]39002000	
12	11	2007/9/7	20:03:30 AAA		1	BS31	SL_0007	Alarm Open/Bit Rvs		[JEMMLINK]JSR1150103	
13	12	2007/9/7	20:03:30 AAA		1	BS31	SL_0007	Alarm Open/Bit Rvs		[JEMMLINK]JSR1152103	
14	13	2007/9/7	20:03:31 AAA		1	BS31	SL_0007	Alarm Open/Bit Rvs		[JEMMLINK]JSR1150103	
15	14	2007/9/7	20:03:31 AAA		1	BS31	SL_0008	Alarm Open/Bit Rvs		[JEMMLINK]JSR1152104	
16	15	2007/9/7	20:03:32 AAA		1	BS31	SL_0003	Stop SW	Bit Rat	[JEMMLINK]39002000	
17	16	2007/9/7	20:03:32 AAA		1	BS31	SL_0007	Alarm Open/Bit Rvs		[JEMMLINK]JSR1150103	
18	17	2007/9/7	20:03:34 AAA		1	BS31	SL_0010	Alarm Open/Bit Rvs		[JEMMLINK]JSR1150104	

05 Rapidly classify connected device error information

Solution Rating

★★★★★ 100%

Q

QUESTION ≪≪

Is it impossible for you to find out connected device information right away when debugging?
Does it take a while to classify error causes?

A

Pro-face's solution ≪≪

Pro-face shows the basic operations and statuses of connected devices on the display, enabling smooth classification of error causes when debugging.

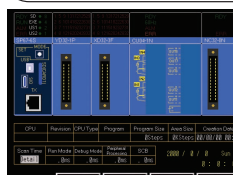
Pro-face offers SHORTENED DRAWING TIME

Information appears on the display, eliminating the need to look at connected devices.

Since connected devices don't need to be operated, error causes can be classified by a single programmer.

Pro-face shows connected device statuses on the display. Since all error information is already set, setting work that could take a month or more is finished immediately as soon as parts are placed.

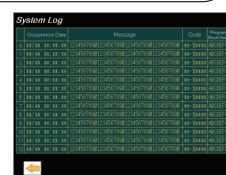
Example: Yokogawa Electric sample parts



Main screen



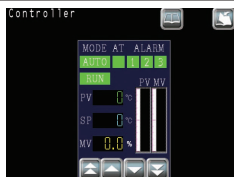
CPU alarm monitor

System log screen
... and many more

If you use Pro-face, you can set addresses that previously could not be set for connected device samples of allied manufactures.



IAI ROBO Cylinder



Yamatate temperature controller



Yokogawa Electric PLC



Yaskawa Electric PLC



Omron temperature controller

Many more applications are available.
See the website for more information.


<http://www.pro-face.com/otatsuke/>

Easy operation

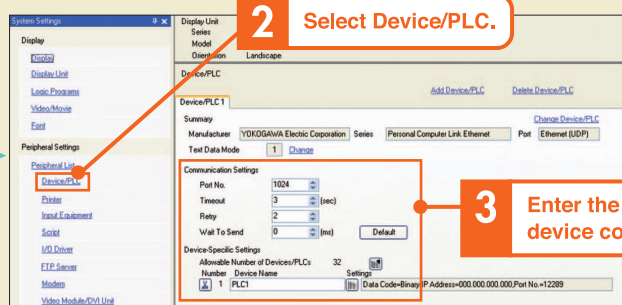
Setting procedure [example for reference]

Open downloaded file.

1 Menu Bar
↓
Select Project
↓
System Settings

2 Select Device/PLC.

3 Enter the communication device connection settings.



Just entering the communication device connection settings provides access to areas normally not accessible. The display lets you view various types of information and work with other manufacturers' devices. Display functions include (1) acquiring internal connected device information, (2) setting parameters, and (3) viewing alarm information.