

21



Saving Device Data Backup

21.1	Try to Save Device Data Backup	21-2
21.2	Setting Guide	21-5

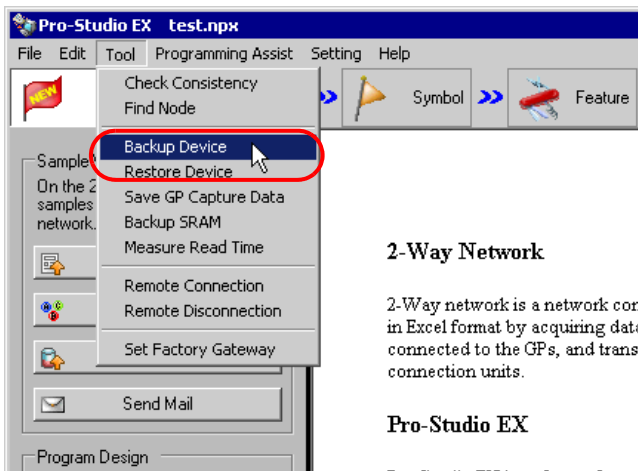
21.1 Try to Save Device Data Backup

The device data in Device/PLC can be easily backed up with simple settings.

The data subjected to backup is limited to sequential devices, however, you are recommended to use this function for backup or editing the data partially on the occasion of maintenance.

-
- NOTE** • The data backed up or edited can be stored in Device/PLC. For the procedures, please refer to "22 Restoring Backup Device Data".
-

- 1 Click [Backup Device] from [Tool] on the menu bar.

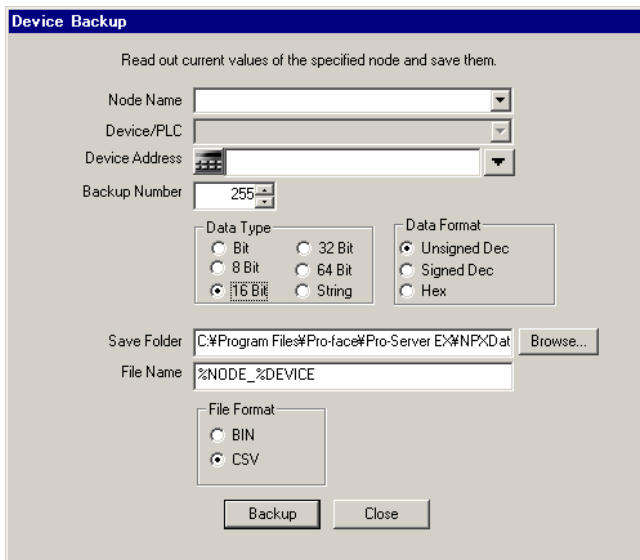


2-Way Network

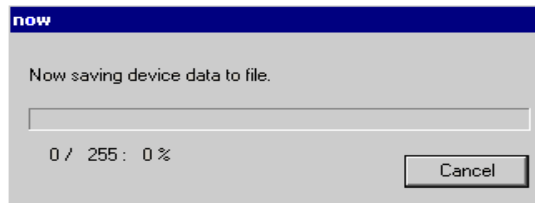
2-Way network is a network con in Excel format by acquiring data connected to the GPs, and trans connection units.

Pro-Studio EX

- 2 Set all items in the "Device Backup" screen and click the [Backup] button.



The "now" screen is displayed, indicating the processing status of backup.

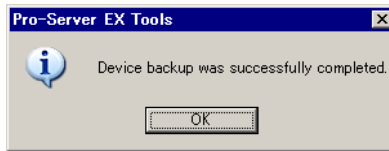


- NOTE** • The set contents in the "Device Backup" screen are incorrect, the following message appears:

Message	Required action
Designate number up to 255 for data backup in the BIT format.	Reset the value in the [Backup Number] in the range of 1 to 255, and then execute backup.
You cannot execute bit-type symbol backup other than in the BIT format.	If you designated a BIT symbol in the [Device Address] field, you cannot execute backup in formats other than BIT. Reset the format to "BIT", and then execute backup.
You cannot execute symbol backup other than a bit-type in the BIT format.	If you designated a symbol other than a bit-type in the [Device Address] field, you cannot execute backup in BIT. Reset the format to something else but "BIT", and then execute backup.
Amount of backup data is incorrect.	Please set up back up data only up to the maximum limit and run backup again. The amount of data you can back up is different depending on the device data type, and so on.
The specified device is an undefined symbol or an invalid address.	Set up an accessible device address or symbol. Also, set up an acceptable data type and run back up again.

When the saving process has been completed successfully, the message of "Device backup was successfully completed" appears.

Click the [OK] button to finish the process.



Below are the data contents for CSV device data.

Node name, (Node name for backup)

Device/PLC name (Device/PLC of backup source)

Device name, (Device address to start backup)

Number, (Number of backup data)

Device length, (Bit length of the backup device)

Data type, (one of the following: bit, unsigned decimal, signed decimal, hexadecimal, or string)

Date, (Backup date)

Data, comment

(Value of the first device address), (Name of the first device address)

(Value of the second device address), (Name of the second device address)

NOTE

- The backup date should be written in a format of "(year)/(month)/(day) (space) (hour):(minute)". Note that if only (minute) shows one digit, use 0 (zero) in the second digit.
 - TIME, TIME_OF_DAY, DATE, DATE_AND_TIME formatted values are stored as binary values.
 - For information on displaying as text, refer to '27.8 Binary Date and Time / Text Display Conversion'.
-

21.2 Setting Guide

Setting item	Setting content
Node Name	Select the node reading the Device Backup data. The list indicates the nodes registered in the network project file under loading.
Device/PLC	Select the Device/PLC reading the Device data.
Device Address	Enter the leading device address or symbol in the device from which you read the data. NOTE <ul style="list-style-type: none"> When you set the [File Format] to [Bin], make sure the file path does not exceed 255 single-byte characters. Backup is not possible if you exceed 255 characters.
Backup Number	Enter the number of backup device. NOTE <ul style="list-style-type: none"> The maximum number of device that you can backup depends on the device data type. This is automatically set up when you select a symbol in the [Device Address] field. To back up a STRING device, specify the number of bytes to back up.
Data Format	Select the type of saved data. Refer to " ■ Accessible Tag data formats" for accessible tag data formats NOTE <ul style="list-style-type: none"> This is automatically set up when you select a symbol in the [Device Address] field. When you set the [Data Type] to [String] and the [Data Format] to [CSV], note the following. <ul style="list-style-type: none"> The string up to the NULL termination character is backed up. Backup is not possible when the device contains control codes (other than NULL). If the last byte in a device, or the last byte in a range, contains the first byte of a double-byte character, the string up to (but not including) the last byte is backed up.
Data notation	When [CSV] is selected on [File Format], set the data notation.

Setting item	Setting content
Save Folder	Set the folder that you wish to save file. Click the [Browse] button or enter the folder name directly to select the folder.
File Name	Enter the file name to be saved. By default, the file name will vary depending on the node name, the device address, the saved type and the data type you select.
File Format	<p>Select the data saving format.</p> <ul style="list-style-type: none"> • BIN Save as binary data. Suited for saving large volumes of data. But you cannot confirm or edit the backup data on PC. • CSV Save as CSV data. You can confirm or edit the backup data on PC.

■ Accessible Tag data formats

		Device Size or Tag data format								
		1	8	16	32			64	STRING	
		BOOL	BYTE SINT USINT	WORD INT UINT	DWORD DINT UDINT REAL	DATE	TIME	TIME_OF_DAY		DATE_AND_TIME
Data formats you can define for device backup	Bit	o	x	o ^{*1}	o ^{*1}	x	x	x	x	x
	8 bits	x	o	x	x	x	x	x	x	x
	16 bits	x	x	o	o	x	x	x	x	x
	32 bits	x	x	o	o	o	o	o	x	x
	64 bits	x	x	x	x	x	x	x	o	x
	Text	x	x	o	o	x	x	x	x	o

*1 Availability depends on the driver in use.