



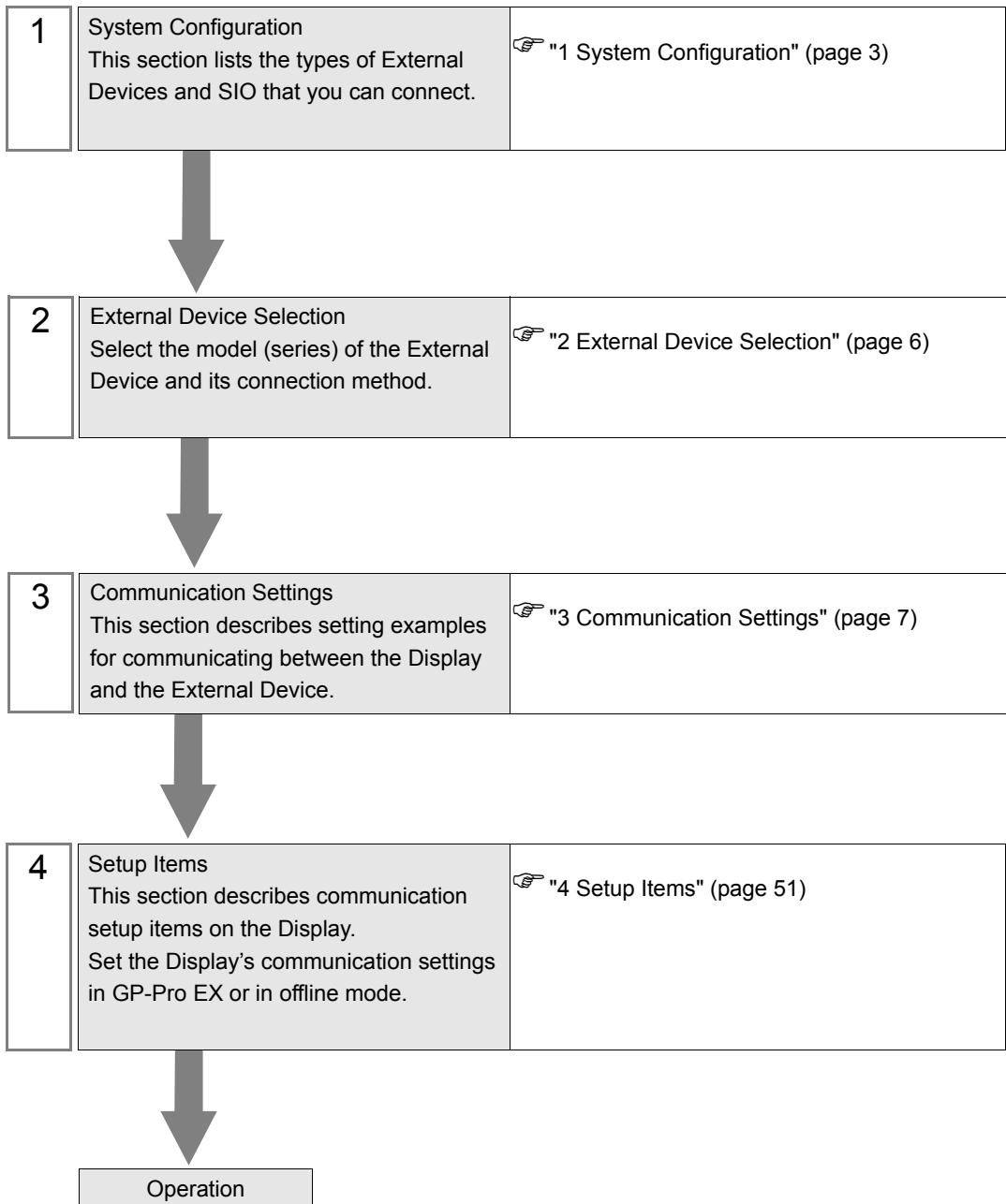
# KV-700/1000/3000/5000 Ethernet Driver

1	System Configuration.....	3
2	External Device Selection .....	6
3	Communication Settings .....	7
4	Setup Items .....	51
5	Supported Devices.....	59
6	Device Code and Address Code.....	68
7	Error Messages.....	73

## Introduction

This manual describes how to connect the Display and the External Device (target PLC).

In this manual, the connection procedure is described in the sections identified below.



# 1 System Configuration

The following table lists system configurations for connecting KEYENCE Corporation External Devices and the Display.

Series	CPU	Link I/F	SIO Type	Setting Example
KV-700 Series	KV-700	KV-LE20A	Ethernet (UDP)	Setting Example 1 (page 7)
			Ethernet (TCP)	Setting Example 2 (page 9)
		KV-LE20V*1	Ethernet (UDP)	Setting Example 5 (page 15)
			Ethernet (TCP)	Setting Example 6 (page 17)
KV-1000 Series	KV-1000	KV-LE20A	Ethernet (UDP)	Setting Example 3 (page 11)
			Ethernet (TCP)	Setting Example 4 (page 13)
		KV-LE20V*1	Ethernet (UDP)	Setting Example 5 (page 15)
			Ethernet (TCP)	Setting Example 6 (page 17)
KV-3000 Series	KV-3000	KV-LE20V*1	Ethernet (UDP)	Setting Example 7 (page 19)
			Ethernet (TCP)	Setting Example 8 (page 21)
KV-5000 Series	KV-5000	KV-LE20V*1	Ethernet (UDP)	Setting Example 7 (page 19)
			Ethernet (TCP)	Setting Example 8 (page 21)
		Ethernet port on CPU*1	Ethernet (UDP)	Setting Example 9 (page 23)
			Ethernet (TCP)	Setting Example 10 (page 25)
KV-5500 Series	KV-5500	KV-LE21V*2	Ethernet (UDP)	Setting Example 11 (page 27)
			Ethernet (TCP)	Setting Example 12 (page 29)
		Ethernet port on CPU*2	Ethernet (UDP)	Setting Example 13 (page 31)
			Ethernet (TCP)	Setting Example 14 (page 33)
KV-7000 Series	KV-7300*3	KV-LE20V	Ethernet (UDP)	Setting Example 15 (page 35)
			Ethernet (TCP)	Setting Example 16 (page 37)
		KV-LE21V	Ethernet (UDP)	Setting Example 15 (page 35)
			Ethernet (TCP)	Setting Example 16 (page 37)
		KV-EP21V	Ethernet (UDP)	Setting Example 21 (page 47)
			Ethernet (TCP)	Setting Example 22 (page 49)

Series	CPU	Link I/F	SIO Type	Setting Example
KV-7000 Series	KV-7500* <sup>3</sup>	KV-LE20V	Ethernet (UDP)	Setting Example 15 (page 35)
			Ethernet (TCP)	Setting Example 16 (page 37)
		KV-LE21V	Ethernet (UDP)	Setting Example 15 (page 35)
			Ethernet (TCP)	Setting Example 16 (page 37)
		KV-EP21V	Ethernet (UDP)	Setting Example 21 (page 47)
			Ethernet (TCP)	Setting Example 22 (page 49)
		Ethernet port on CPU	Ethernet (UDP)	Setting Example 17 (page 39)
			Ethernet (TCP)	Setting Example 18 (page 41)
KV-Nano Series	KV-NC32T KV-N14□□ KV-N24□□ KV-N40□□ KV-N60□□	KV-NC1EP* <sup>4</sup>	Ethernet (UDP)	Setting Example 19 (page 43)
			Ethernet (TCP)	Setting Example 20 (page 45)

\*1 Communication settings require ladder software KV STUDIO Ver. 4 or later.

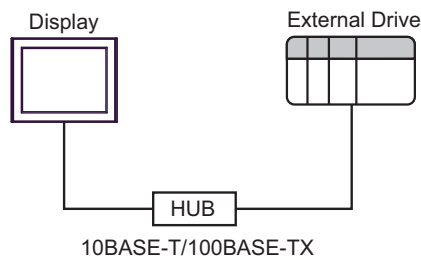
\*2 Communication settings require ladder software KV STUDIO Ver. 6 or later.

\*3 Communication settings require ladder software KV STUDIO Ver. 8 or later.

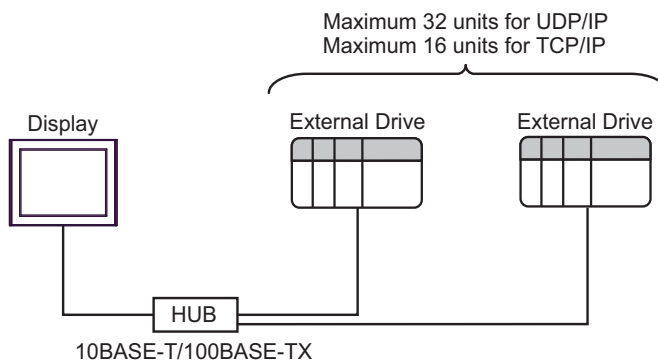
\*4 Communication settings require ladder software KV STUDIO Ver. 7.1 or later.

## ■ Connection Configuration

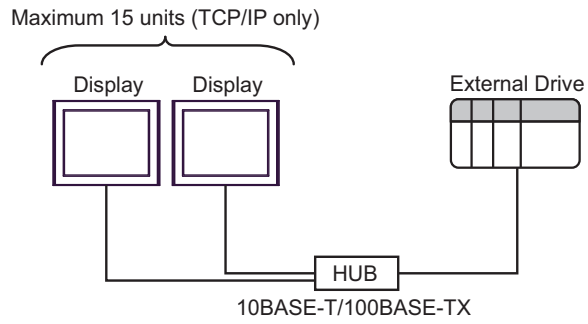
- 1:1 Connection



- 1:n Connection



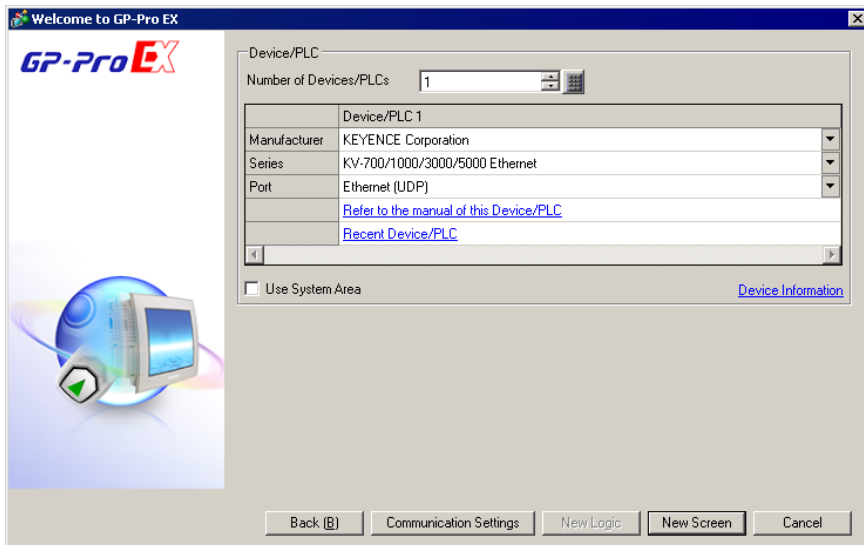
- n:1 Connection

**NOTE**

- You can connect only one display when you use UDP/IP.

## 2 External Device Selection

Select the External Device to connect to the Display.



Setup Items	Setup Description
Number of Devices/PLCs	Enter an integer from "1 to 4" to set the series number.
Manufacturer	Select the manufacturer of the External Device to be connected. Select "KEYENCE Corporation".
Series	Select the model (series) of the External Device to be connected and the connection method. Select "KV-700/1000/3000/5000 Ethernet". In System Configuration, check to make sure the external device to which you are connecting is supported in "KV-700/1000/3000/5000 Ethernet". ☞ "1 System Configuration" (page 3)
Port	Select the port of the Display to be connected to the External Device.
Use System Area	Check this option to synchronize the system data area of the display unit and the device (memory) of the External Device. When they are synchronized, you can use the ladder program of the External Device to change screens or to pop up a window on the Display. Cf. GP-Pro EX Reference Manual "LS Area (Direct Access Method Area)" This can also be set with GP-Pro EX or in the Display offline mode. Cf. GP-Pro EX Reference Manual "[System Settings] Setting Guide, [Display Unit] Settings Guide, System Area Settings" Cf. Maintenance/Troubleshooting Guide "Settings common to all Display models, [Main Unit Settings] Settings Guide, System Area Settings"

## 3 Communication Settings

This section provides examples of communication settings recommended by Pro-face for the Display and the External Device.

### 3.1 Setting Example 1

#### ■ GP-Pro EX Settings

##### ◆ Communication Settings

To display the setup screen, from the [System Settings] workspace, select [Device/PLC].

Device/PLC 1

Summary [Change Device/PLC](#)

Manufacturer KEYENCE Corporation Series KV-700/1000/3000/5000 Ethernet Port Ethernet (UDP)

Text Data Mode 2 [Change](#)

Communication Settings

Port No. 1024

Timeout 3 (sec)

Retry 2

Wait To Send 0 (ms) [Default](#)

Device-Specific Settings

Allowable Number of Devices/PLCs 32 [Add Device](#)

No.	Device Name	Settings	Add Indirect Device
1	PLC1	Series=KV-700/1000,IP Address=192.168.0.001,Port=1024	<a href="#">+</a>

##### ◆ Device Settings

To display the [Individual Device Settings] dialog box, select the external device and click [Settings] from [Device-Specific Settings] in the [Device/PLC] window. To connect multiple External Devices, click [Add Device] from [Device-Specific Settings] in the [Device/PLC] window to add another External Device.

Individual Device Settings

PLC1

Series KV-700/1000

If you change the series, please reconfirm all address settings.

IP Address 192.168.0.1

Port No. 8501

[Default](#)

[OK \(O\)](#) [Cancel](#)

##### ◆ Notes

- Check with your network administrator about the IP address you want to use.
- Do not duplicate IP addresses on the same network.
- In [Individual Device Settings], set the IP address of the External Device.
- Set the Display's IP address in offline mode.

## ■ External Device Settings

Use the configuration tool (KV BUILDER/Ver. 4.70) for External Device communication settings. Refer to your External Device manual for details.

- 1 Start up the configuration tool.
- 2 From the [File] menu, select [New Project], enter a project name, and then click [OK].
- 3 In the [Change Device] dialog box, if extended memory is installed, select "KV-700+M"; if not, select "KV-700". Then click [OK].
- 4 In the dialog box that appears, click [Yes] to move to the Unit Editor.
- 5 Click the [Unit selection (2)] tab, select "KV-LE20A", and then drag and drop the unit between the CPU and the end unit.
- 6 With KV-LE20A selected, switch to the [Unit setup (3)] tab, and set as follows.

Setup Items	Settings
First DM No.	DM10000
Speed	100/10 Mbps (automatic)
IP Address	192.168.0.1
Subnet Mask	255.255.255.0
Port No. (HOST Link)	8501

- 7 From the [File] menu, select [Save and Exit] to return to the editor mode.
- 8 From the [Monitor/Simulator] menu, select [Convert → Move → Monitor].
- 9 Check [Unit setting information], and then click [Exec]. The setting information is transferred.

This completes the setting of the External Device.

### ◆ Notes

- Check with your network administrator about the IP address you want to use.
- Do not duplicate IP addresses on the same network.

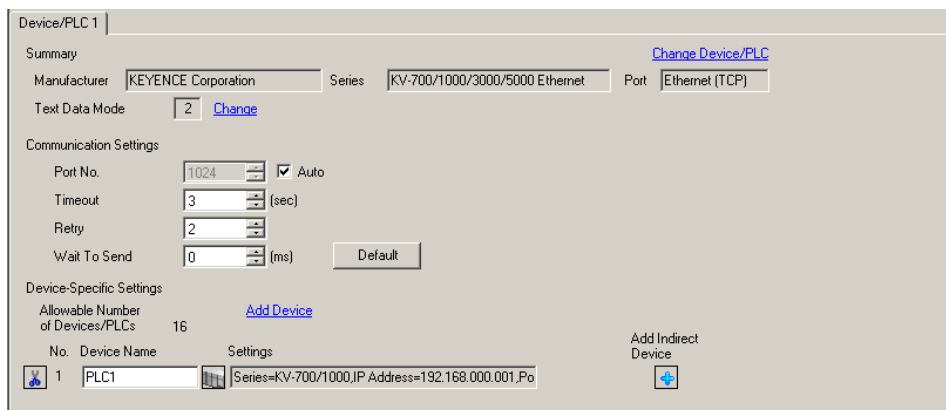


## 3.2 Setting Example 2


### ■ GP-Pro EX Settings

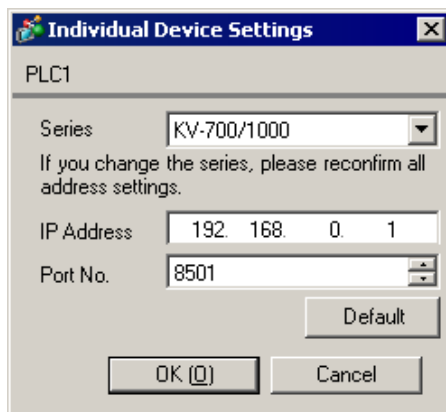
#### ◆ Communication Settings

To display the setup screen, from the [System Settings] workspace, select [Device/PLC].



#### ◆ Device Settings

To display the [Individual Device Settings] dialog box, select the external device and click  [Settings] from [Device-Specific Settings] in the [Device/PLC] window. To connect multiple External Devices, click [Add Device] from [Device-Specific Settings] in the [Device/PLC] window to add another External Device.



#### ◆ Notes

- Check with your network administrator about the IP address you want to use.
- Do not duplicate IP addresses on the same network.
- In [Individual Device Settings], set the IP address of the External Device.
- Set the Display's IP address in offline mode.

## ■ External Device Settings

Use the configuration tool (KV BUILDER/Ver. 4.70) for External Device communication settings. Refer to your External Device manual for details.

- 1 Start up the configuration tool.
- 2 From the [File] menu, select [New Project], enter a project name, and then click [OK].
- 3 In the [Change Device] dialog box, if extended memory is installed, select "KV-700+M"; if not, select "KV-700". Then click [OK].
- 4 In the dialog box that appears, click [Yes] to move to the Unit Editor.
- 5 Click the [Unit selection (2)] tab, select "KV-LE20A", and then drag and drop the unit between the CPU and the end unit.
- 6 With KV-LE20A selected, switch to the [Unit setup (3)] tab, and set as follows.

Setup Items	Settings
First DM No.	DM10000
Speed	100/10 Mbps (automatic)
IP Address	192.168.0.1
Subnet Mask	255.255.255.0
Port No. (HOST Link)	8501

- 7 From the [File] menu, select [Save and Exit] to return to the editor mode.
- 8 From the [Monitor/Simulator] menu, select [Convert → Move → Monitor].
- 9 Check [Unit setting information], and then click [Exec]. The setting information is transferred.

This completes the setting of the External Device.

### ◆ Notes

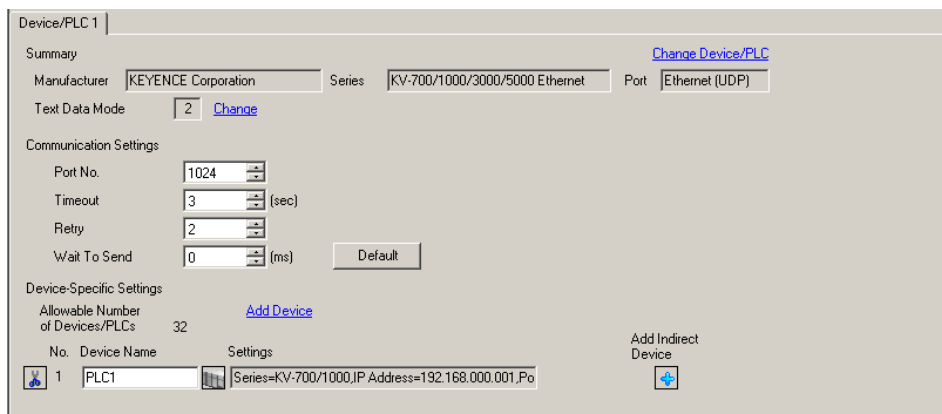
- Check with your network administrator about the IP address you want to use.
- Do not duplicate IP addresses on the same network.

### 3.3 Setting Example 3


#### ■ GP-Pro EX Settings

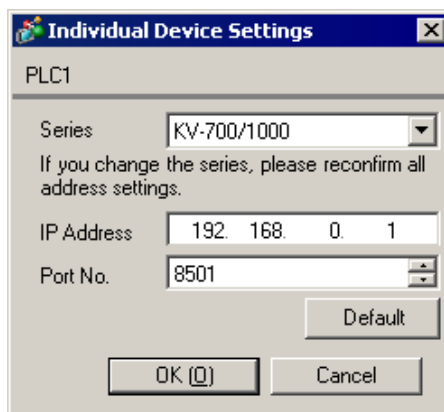
##### ◆ Communication Settings

To display the setup screen, from the [System Settings] workspace, select [Device/PLC].



##### ◆ Device Settings

To display the [Individual Device Settings] dialog box, select the external device and click  [Settings] from [Device-Specific Settings] in the [Device/PLC] window. To connect multiple External Devices, click [Add Device] from [Device-Specific Settings] in the [Device/PLC] window to add another External Device.



##### ◆ Notes

- Check with your network administrator about the IP address you want to use.
- Do not duplicate IP addresses on the same network.
- In [Individual Device Settings], set the IP address of the External Device.
- Set the Display's IP address in offline mode.

## ■ External Device Settings

Use the configuration tool (KV STUDIO/Ver. 2.50) for External Device communication settings. Refer to your External Device manual for details.

- 1 Start up the configuration tool.
- 2 From the [File] menu, select [New Project], enter a project name, and then click [OK].
- 3 In the dialog box that appears, click [Yes] to move to the Unit Editor.
- 4 Click the [Unit selection (2)] tab, select "KV-LE20A", and then drag and drop the unit between the CPU and the end unit.
- 5 With KV-LE20A selected, switch to the [Unit setup (3)] tab, and set as follows.

Setup Items	Settings
First DM No.	DM10000
Speed	100/10 Mbps (automatic)
IP Address	192.168.0.1
Subnet Mask	255.255.255.0
Port No. (HOST Link)	8501

- 6 From the [File] menu, select [Save and Exit] to return to the editor mode.
- 7 From the [Monitor/Simulator] menu, select [Convert → Move].
- 8 Check [Unit setting information], and then click [Exec]. The setting information is transferred.

This completes the setting of the External Device.

### ◆ Notes

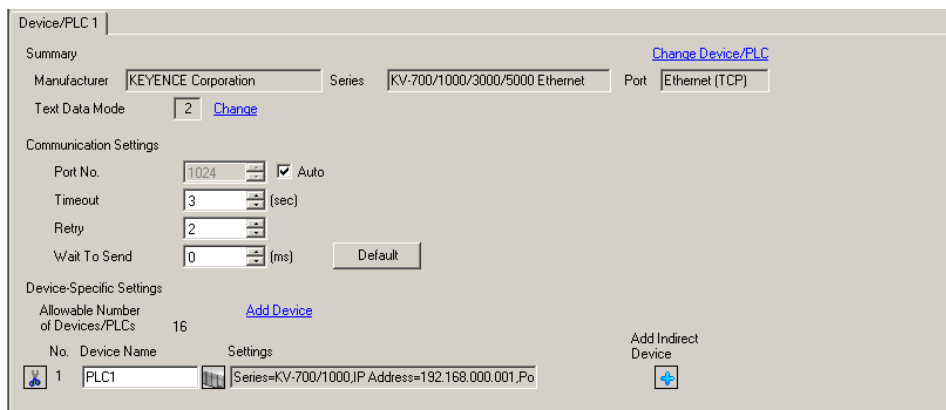
- Check with your network administrator about the IP address you want to use.
- Do not duplicate IP addresses on the same network.

## 3.4 Setting Example 4


### ■ GP-Pro EX Settings

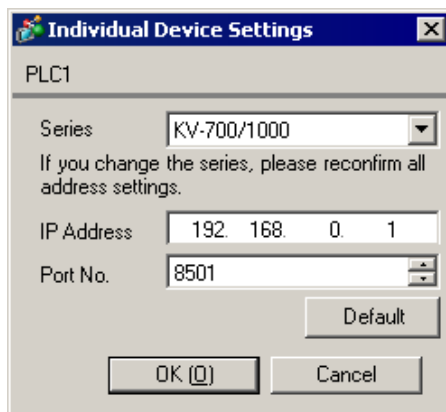
#### ◆ Communication Settings

To display the setup screen, from the [System Settings] workspace, select [Device/PLC].



#### ◆ Device Settings

To display the [Individual Device Settings] dialog box, select the external device and click  [Settings] from [Device-Specific Settings] in the [Device/PLC] window. To connect multiple External Devices, click [Add Device] from [Device-Specific Settings] in the [Device/PLC] window to add another External Device.



#### ◆ Notes

- Check with your network administrator about the IP address you want to use.
- Do not duplicate IP addresses on the same network.
- In [Individual Device Settings], set the IP address of the External Device.
- Set the Display's IP address in offline mode.

## ■ External Device Settings

Use the configuration tool (KV STUDIO/Ver. 2.50) for External Device communication settings. Refer to your External Device manual for details.

- 1 Start up the configuration tool.
- 2 From the [File] menu, select [New Project], enter a project name, and then click [OK].
- 3 In the dialog box that appears, click [Yes] to move to the Unit Editor.
- 4 Click the [Unit selection (2)] tab, select "KV-LE20A", and then drag and drop the unit between the CPU and the end unit.
- 5 With KV-LE20A selected, switch to the [Unit setup (3)] tab, and set as follows.

Setup Items	Settings
First DM No.	DM10000
Speed	100/10 Mbps (automatic)
IP Address	192.168.0.1
Subnet Mask	255.255.255.0
Port No. (HOST Link)	8501

- 6 From the [File] menu, select [Save and Exit] to return to the editor mode.
- 7 From the [Monitor/Simulator] menu, select [Convert → Move].
- 8 Check [Unit setting information], and then click [Exec]. The setting information is transferred.

This completes the setting of the External Device.

### ◆ Notes

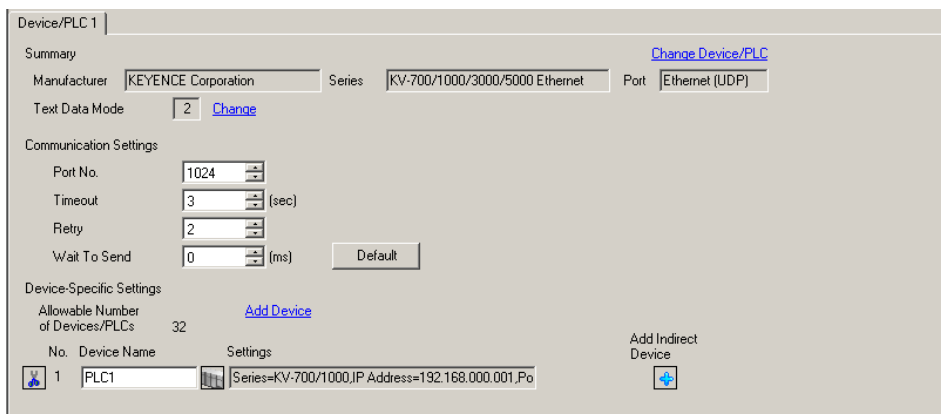
- Check with your network administrator about the IP address you want to use.
- Do not duplicate IP addresses on the same network.

## 3.5 Setting Example 5


### ■ GP-Pro EX Settings

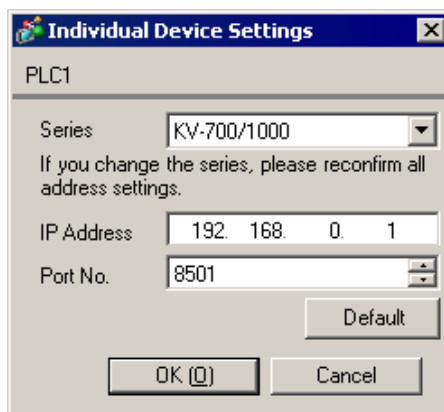
#### ◆ Communication Settings

To display the setup screen, from the [System Settings] workspace, select [Device/PLC].



#### ◆ Device Settings

To display the [Individual Device Settings] dialog box, select the external device and click  [Settings] from [Device-Specific Settings] in the [Device/PLC] window. To connect multiple External Devices, click [Add Device] from [Device-Specific Settings] in the [Device/PLC] window to add another External Device.



#### ◆ Notes

- Check with your network administrator about the IP address you want to use.
- Do not duplicate IP addresses on the same network.
- In [Individual Device Settings], set the IP address of the External Device.
- Set the Display's IP address in offline mode.

## ■ External Device Settings

Use the ladder software (KV STUDIO Ver. 4 or later) for External Device communication settings. Refer to your External Device manual for details.

- 1 Start up the ladder software.
- 2 From the [File] menu, select [New Project] and display the [New Project] dialog box.
- 3 Type a project name in [Project Name], select the External Device to use under [PLC model], and click [OK].
- 4 Click [Yes] in the [Confirm unit setting information] dialog box and display the [Unit Editor] window.
- 5 Select "KV-LE20V" from the displayed unit list on the [Select unit] tab, and drag & drop it to the unit placement area.
- 6 Right-click "KV-LE20V" in the unit placement area and select [Unit setup display].
- 7 Configure the following setting items.

Setup Items	Settings
First DM No.	DM10100
Speed	100/10 Mbps (automatic)
IP Address	192.168.0.1
Subnet Mask	255.255.255.0
Port No. (HOST Link)	8501

- 8 From the [Convert] menu, select [Auto-assign relay/DM].
- 9 From the [File] menu, select [Close] and display the [Unit Editor] dialog box.
- 10 Click [Yes].
- 11 From the [Monitor/Simulator] menu, select [Transfer to PLC] to display the [Transfer Program] dialog box.
- 12 Check [Unit setting info] and [Program], and then click [Execute]. The setting information is transferred.

This completes the setting of the External Device.

### ◆ Notes

- Check with your network administrator about the IP address you want to use.
- Do not duplicate IP addresses on the same network.

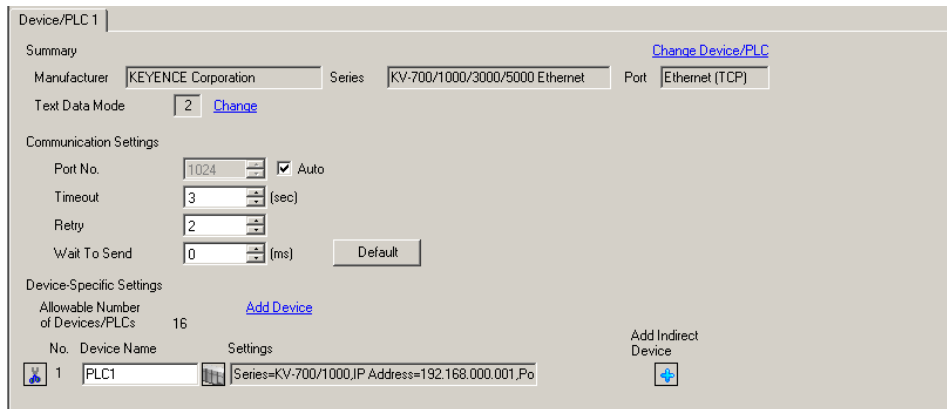


## 3.6 Setting Example 6


### ■ GP-Pro EX Settings

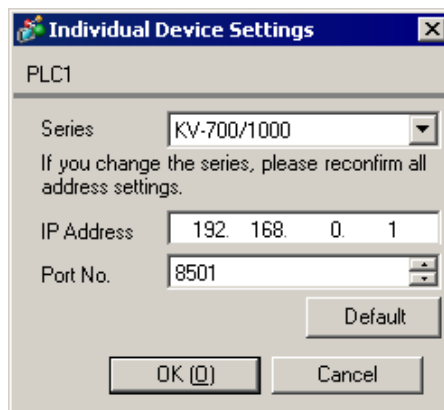
#### ◆ Communication Settings

To display the setup screen, from the [System Settings] workspace, select [Device/PLC].



#### ◆ Device Settings

To display the [Individual Device Settings] dialog box, select the external device and click  [Settings] from [Device-Specific Settings] in the [Device/PLC] window. To connect multiple External Devices, click [Add Device] from [Device-Specific Settings] in the [Device/PLC] window to add another External Device.



#### ◆ Notes

- Check with your network administrator about the IP address you want to use.
- Do not duplicate IP addresses on the same network.
- In [Individual Device Settings], set the IP address of the External Device.
- Set the Display's IP address in offline mode.

## ■ External Device Settings

Use the ladder software (KV STUDIO Ver. 4 or later) for External Device communication settings. Refer to your External Device manual for details.

- 1 Start up the ladder software.
- 2 From the [File] menu, select [New Project] and display the [New Project] dialog box.
- 3 Type a project name in [Project Name], select the External Device to use under [PLC model], and click [OK].
- 4 Click [Yes] in the [Confirm unit setting information] dialog box and display the [Unit Editor] window.
- 5 Select "KV-LE20V" from the displayed unit list on the [Select unit] tab, and drag & drop it to the unit placement area.
- 6 Right-click "KV-LE20V" in the unit placement area and select [Unit setup display].
- 7 Configure the following setting items.

Setup Items	Settings
First DM No.	DM10100
Speed	100/10 Mbps (automatic)
IP Address	192.168.0.1
Subnet Mask	255.255.255.0
Port No. (HOST Link)	8501

- 8 From the [Convert] menu, select [Auto-assign relay/DM].
- 9 From the [File] menu, select [Close] and display the [Unit Editor] dialog box.
- 10 Click [Yes].
- 11 From the [Monitor/Simulator] menu, select [Transfer to PLC] to display the [Transfer Program] dialog box.
- 12 Check [Unit setting info] and [Program], and then click [Execute]. The setting information is transferred.

This completes the setting of the External Device.

### ◆ Notes

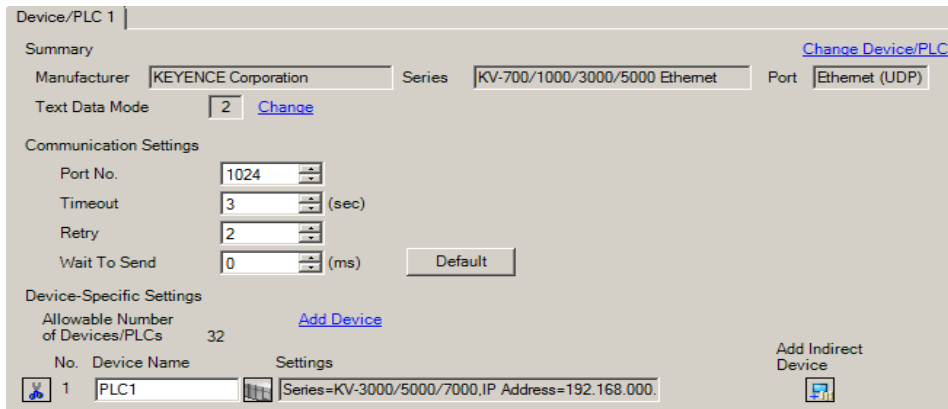
- Check with your network administrator about the IP address you want to use.
- Do not duplicate IP addresses on the same network.

## 3.7 Setting Example 7


### ■ GP-Pro EX Settings

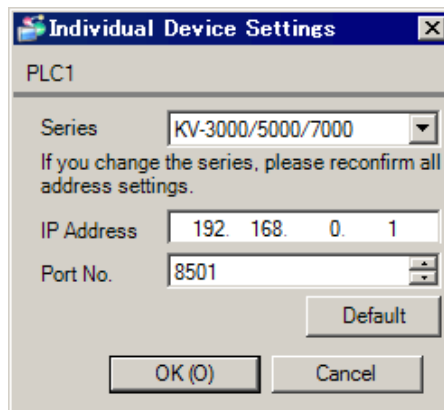
#### ◆ Communication Settings

To display the setup screen, from the [System Settings] workspace, select [Device/PLC].



#### ◆ Device Settings

To display the [Individual Device Settings] dialog box, select the external device and click  [Settings] from [Device-Specific Settings] in the [Device/PLC] window. To connect multiple External Devices, click [Add Device] from [Device-Specific Settings] in the [Device/PLC] window to add another External Device.



#### ◆ Notes

- Check with your network administrator about the IP address you want to use.
- Do not duplicate IP addresses on the same network.
- In [Individual Device Settings], set the IP address of the External Device.
- Set the Display's IP address in offline mode.

## ■ External Device Settings

Use the ladder software (KV STUDIO Ver. 4 or later) for External Device communication settings. Refer to your External Device manual for details.

- 1 Start up the ladder software.
- 2 From the [File] menu, select [New Project] and display the [New Project] dialog box.
- 3 Type a project name in [Project Name], select the External Device to use under [PLC model], and click [OK].
- 4 Click [Yes] in the [Confirm unit setting information] dialog box and display the [Unit Editor] window.
- 5 Select "KV-LE20V" from the displayed unit list on the [Select unit] tab, and drag & drop it to the unit placement area.
- 6 Right-click "KV-LE20V" in the unit placement area and select [Unit setup display].
- 7 Configure the following setting items.

Setup Items	Settings
First DM No.	DM10100
Speed	100/10 Mbps (automatic)
IP Address	192.168.0.1
Subnet Mask	255.255.255.0
Port No. (HOST Link)	8501

- 8 From the [Convert] menu, select [Auto-assign relay/DM].
- 9 From the [File] menu, select [Close] and display the [Unit Editor] dialog box.
- 10 Click [Yes].
- 11 From the [Monitor/Simulator] menu, select [Transfer to PLC] to display the [Transfer Program] dialog box.
- 12 Check [Unit setting info] and [Program], and then click [Execute]. The setting information is transferred.

This completes the setting of the External Device.

### ◆ Notes

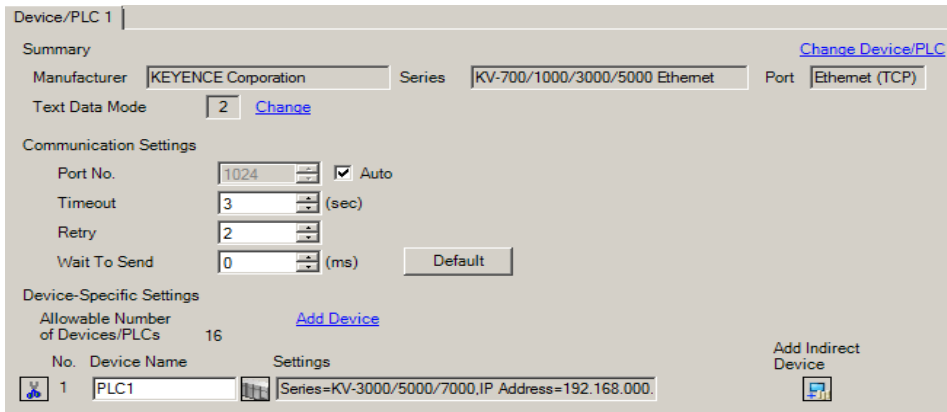
- Check with your network administrator about the IP address you want to use.
- Do not duplicate IP addresses on the same network.

## 3.8 Setting Example 8


### ■ GP-Pro EX Settings

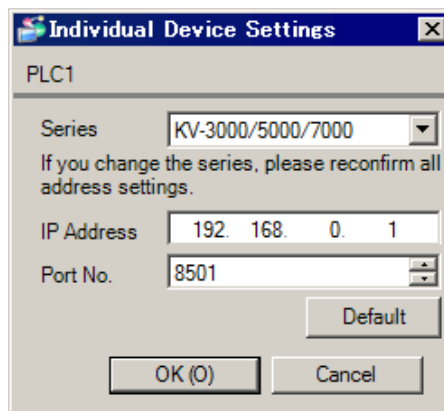
#### ◆ Communication Settings

To display the setup screen, from the [System Settings] workspace, select [Device/PLC].



#### ◆ Device Settings

To display the [Individual Device Settings] dialog box, select the external device and click  [Settings] from [Device-Specific Settings] in the [Device/PLC] window. To connect multiple External Devices, click [Add Device] from [Device-Specific Settings] in the [Device/PLC] window to add another External Device.



#### ◆ Notes

- Check with your network administrator about the IP address you want to use.
- Do not duplicate IP addresses on the same network.
- In [Individual Device Settings], set the IP address of the External Device.
- Set the Display's IP address in offline mode.

## ■ External Device Settings

Use the ladder software (KV STUDIO Ver. 4 or later) for External Device communication settings. Refer to your External Device manual for details.

- 1 Start up the ladder software.
- 2 From the [File] menu, select [New Project] and display the [New Project] dialog box.
- 3 Type a project name in [Project Name], select the External Device to use under [PLC model], and click [OK].
- 4 Click [Yes] in the [Confirm unit setting information] dialog box and display the [Unit Editor] window.
- 5 Select "KV-LE20V" from the displayed unit list on the [Select unit] tab, and drag & drop it to the unit placement area.
- 6 Right-click "KV-LE20V" in the unit placement area and select [Unit setup display].
- 7 Configure the following setting items.

Setup Items	Settings
First DM No.	DM10100
Speed	100/10 Mbps (automatic)
IP Address	192.168.0.1
Subnet Mask	255.255.255.0
Port No. (HOST Link)	8501

- 8 From the [Convert] menu, select [Auto-assign relay/DM].
- 9 From the [File] menu, select [Close] and display the [Unit Editor] dialog box.
- 10 Click [Yes].
- 11 From the [Monitor/Simulator] menu, select [Transfer to PLC] to display the [Transfer Program] dialog box.
- 12 Check [Unit setting info] and [Program], and then click [Execute]. The setting information is transferred.

This completes the setting of the External Device.

### ◆ Notes

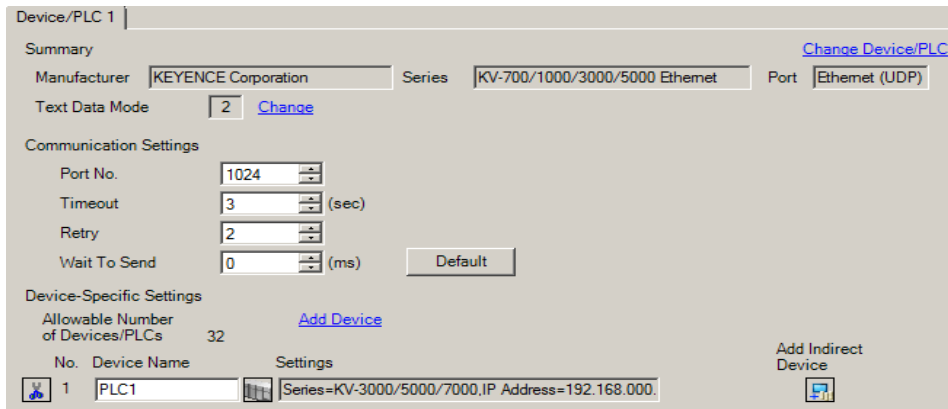
- Check with your network administrator about the IP address you want to use.
- Do not duplicate IP addresses on the same network.

## 3.9 Setting Example 9


### ■ GP-Pro EX Settings

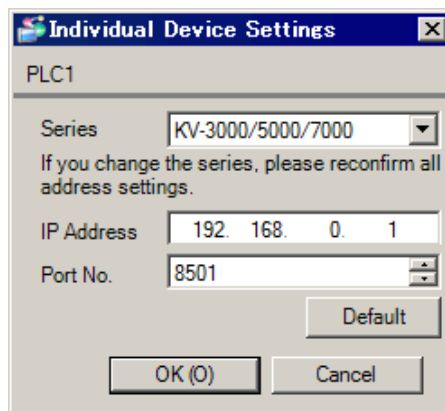
#### ◆ Communication Settings

To display the setup screen, from the [System Settings] workspace, select [Device/PLC].



#### ◆ Device Settings

To display the [Individual Device Settings] dialog box, select the external device and click  [Settings] from [Device-Specific Settings] in the [Device/PLC] window. To connect multiple External Devices, click [Add Device] from [Device-Specific Settings] in the [Device/PLC] window to add another External Device.



#### ◆ Notes

- Check with your network administrator about the IP address you want to use.
- Do not duplicate IP addresses on the same network.
- In [Individual Device Settings], set the IP address of the External Device.
- Set the Display's IP address in offline mode.

## ■ External Device Settings

Use the ladder software (KV STUDIO Ver. 4 or later) for External Device communication settings. Refer to your External Device manual for details.

- 1 Start up the ladder software.
- 2 From the [File] menu, select [New Project] and display the [New Project] dialog box.
- 3 Type a project name in [Project Name], select the External Device to use under [PLC model], and click [OK].
- 4 Click [Yes] in the [Confirm unit setting information] dialog box and display the [Unit Editor] window.
- 5 Right-click "KV-5000" in the unit placement area and select [Unit setup display].
- 6 Select "Ethernet" in [Communication Mode], and configure the following setting items.

Setup Items	Settings
First DM No.	DM0
Speed	100/10 Mbps (automatic)
IP Address	192.168.0.1
Subnet Mask	255.255.255.0
Port No. (HOST Link)	8501

- 7 From the [Convert] menu, select [Auto-assign relay/DM].
- 8 From the [File] menu, select [Close] and display the [Unit Editor] dialog box.
- 9 Click [Yes].
- 10 From the [Monitor/Simulator] menu, select [Transfer to PLC] to display the [Transfer Program] dialog box.
- 11 Check [Unit setting info] and [Program], and then click [Execute]. The setting information is transferred.

This completes the setting of the External Device.

### ◆ Notes

- Check with your network administrator about the IP address you want to use.
- Do not duplicate IP addresses on the same network.

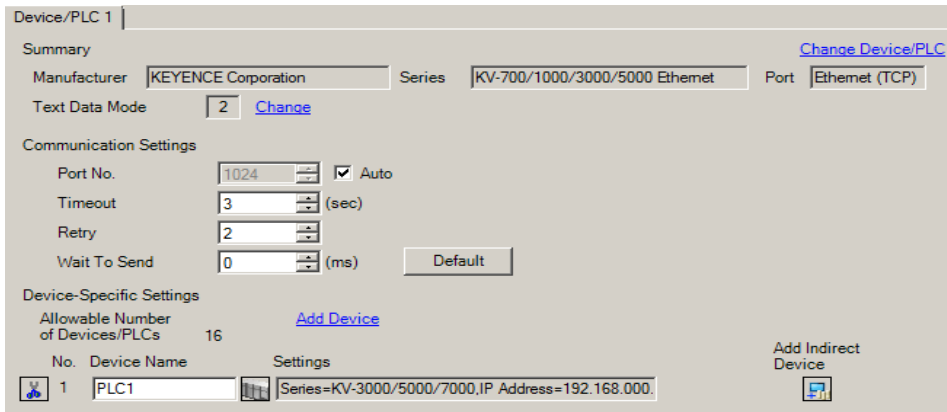


### 3.10 Setting Example 10


#### ■ GP-Pro EX Settings

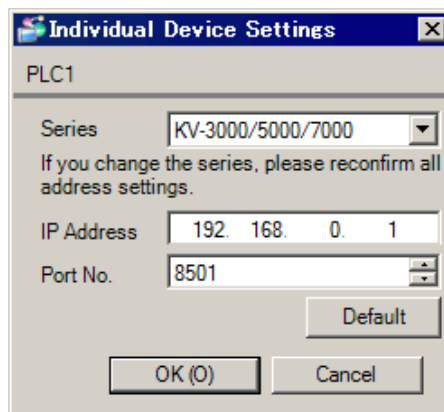
##### ◆ Communication Settings

To display the setup screen, from the [System Settings] workspace, select [Device/PLC].



##### ◆ Device Settings

To display the [Individual Device Settings] dialog box, select the external device and click  [Settings] from [Device-Specific Settings] in the [Device/PLC] window. To connect multiple External Devices, click [Add Device] from [Device-Specific Settings] in the [Device/PLC] window to add another External Device.



##### ◆ Notes

- Check with your network administrator about the IP address you want to use.
- Do not duplicate IP addresses on the same network.
- In [Individual Device Settings], set the IP address of the External Device.
- Set the Display's IP address in offline mode.

## ■ External Device Settings

Use the ladder software (KV STUDIO Ver. 4 or later) for External Device communication settings. Refer to your External Device manual for details.

- 1 Start up the ladder software.
- 2 From the [File] menu, select [New Project] and display the [New Project] dialog box.
- 3 Type a project name in [Project Name], select the External Device to use under [PLC model], and click [OK].
- 4 Click [Yes] in the [Confirm unit setting information] dialog box and display the [Unit Editor] window.
- 5 Right-click "KV-5000" in the unit placement area and select [Unit setup display].
- 6 Select "Ethernet" in [Communication Mode], and configure the following setting items.

Setup Items	Settings
First DM No.	DM0
Speed	100/10 Mbps (automatic)
IP Address	192.168.0.1
Subnet Mask	255.255.255.0
Port No. (HOST Link)	8501

- 7 From the [Convert] menu, select [Auto-assign relay/DM].
- 8 From the [File] menu, select [Close] and display the [Unit Editor] dialog box.
- 9 Click [Yes].
- 10 From the [Monitor/Simulator] menu, select [Transfer to PLC] to display the [Transfer Program] dialog box.
- 11 Check [Unit setting info] and [Program], and then click [Execute]. The setting information is transferred.

This completes the setting of the External Device.

### ◆ Notes

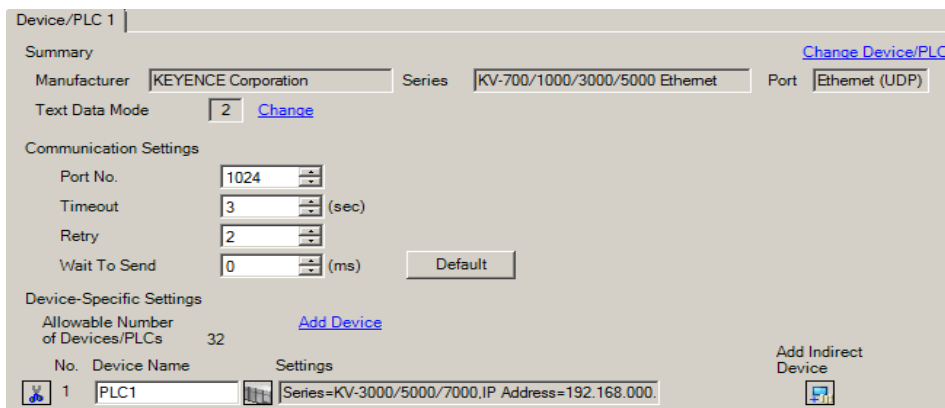
- Check with your network administrator about the IP address you want to use.
- Do not duplicate IP addresses on the same network.

### 3.11 Setting Example 11


#### ■ GP-Pro EX Settings

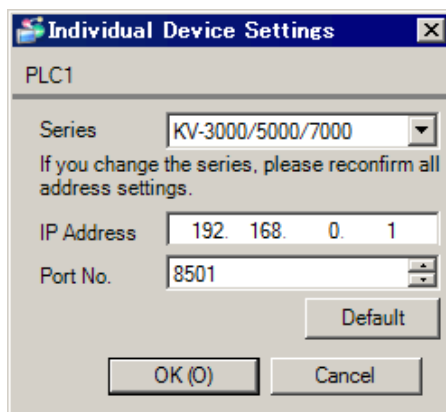
##### ◆ Communication Settings

To display the setup screen, from the [System Settings] workspace, select [Device/PLC].



##### ◆ Device Settings

To display the [Individual Device Settings] dialog box, select the External Device and click  [Settings] from [Device-Specific Settings] in the [Device/PLC] window. To connect multiple External Devices, click [Add Device] from [Device-Specific Settings] in the [Device/PLC] window to add another External Device.



##### ◆ Notes

- Check with your network administrator about the IP address you want to use.
- Do not duplicate IP addresses on the same network.
- In [Individual Device Settings], set the IP address of the External Device.
- Set the Display's IP address in offline mode.
- If you are using a KV-5500 series device, from the [Series] list select [KV-3000/5000].

## ■ External Device Settings

Use ladder software KV STUDIO Ver. 6 or later to define the External Device communication settings. Refer to your External Device manual for details.

- 1 Start up the ladder software.
- 2 From the [File] menu, select [New project] to display the [New project] dialog box.
- 3 In the [Project name] field enter the project name, in the [PLC model] property select the External Device, and click [OK].
- 4 In the [Confirm unit setting information] dialog box click [Yes], and the [Unit Editor] window will display.
- 5 On the [Select unit (1)] tab, from the displayed list of units select "KV-LE2\*V", then drag & drop to the unit placement area.
- 6 In the unit placement area click "KV-LE2\*V" and then select the [Setup unit (2)] tab.
- 7 Configure the setup items as follows.

Setup Items	Settings
IP address	192.168.0.1
Subnet mask	255.255.255.0
Default gateway	0.0.0.0
DNS server	0.0.0.0

- 8 From the [Convert] menu, select [Auto-assign relay/DM].
  - 9 From the [File] menu, select [Close] and display the [Unit Editor] dialog box.
  - 10 Click [Yes].
  - 11 From the [Monitor/Simulator] menu, point to [Setup communication] and select [Setup communication] to display the [Comm settings] dialog box.
  - 12 Check the connection between the computer and device, and then click [OK]. Communication settings for the connection are set.
  - 13 From the [Monitor/Simulator] menu, select [Transfer to PLC] to display the [Transfer program] dialog box.
  - 14 Select the [Unit setting info] and [Program] check boxes, and then click [Execute]. The settings are transferred.
- This completes the External Device setup.

### ◆ Notes

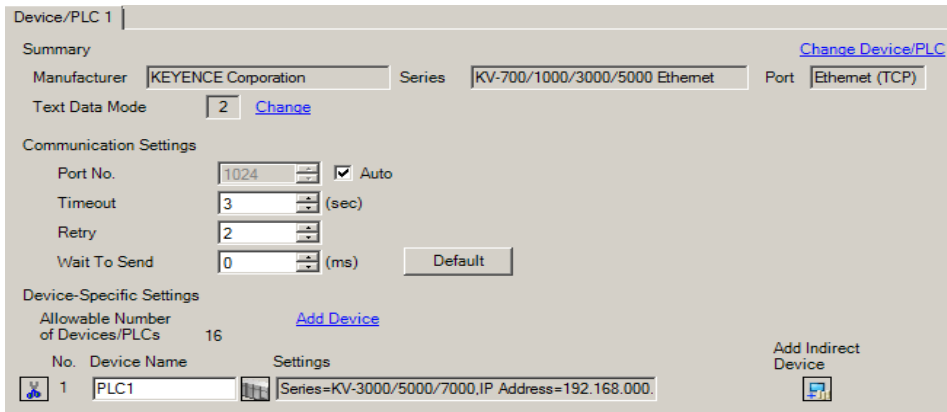
- Check with your network administrator about the IP address you want to use.
- Do not duplicate IP addresses on the same network.

## 3.12 Setting Example 12


### ■ GP-Pro EX Settings

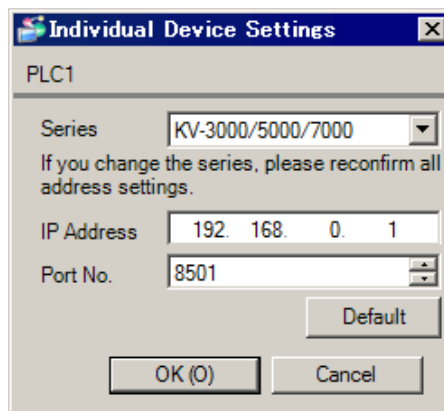
#### ◆ Communication Settings

To display the setup screen, from the [System Settings] workspace, select [Device/PLC].



#### ◆ Device Settings

To display the [Individual Device Settings] dialog box, select the External Device and click  [Settings] from [Device-Specific Settings] in the [Device/PLC] window. To connect multiple External Devices, click [Add Device] from [Device-Specific Settings] in the [Device/PLC] window to add another External Device.



#### ◆ Notes

- Check with your network administrator about the IP address you want to use.
- Do not duplicate IP addresses on the same network.
- In [Individual Device Settings], set the IP address of the External Device.
- Set the Display's IP address in offline mode.
- If you are using a KV-5500 series device, from the [Series] list select [KV-3000/5000].

## ■ External Device Settings

Use ladder software KV STUDIO Ver. 6 or later to define the External Device communication settings. Refer to your External Device manual for details.

- 1 Start up the ladder software.
- 2 From the [File] menu, select [New project] to display the [New project] dialog box.
- 3 In the [Project name] field enter the project name, in the [PLC model] property select the External Device, and click [OK].
- 4 In the [Confirm unit setting information] dialog box click [Yes], and the [Unit Editor] window will display.
- 5 On the [Select unit (1)] tab, from the displayed list of units select "KV-LE2\*V", then drag & drop to the unit placement area.
- 6 In the unit placement area click "KV-LE2\*V" and then select the [Setup unit (2)] tab.
- 7 Configure the setup items as follows.

Setup Items	Settings
IP address	192.168.0.1
Subnet mask	255.255.255.0
Default gateway	0.0.0.0
DNS server	0.0.0.0

- 8 From the [Convert] menu, select [Auto-assign relay/DM].
  - 9 From the [File] menu, select [Close] and display the [Unit Editor] dialog box.
  - 10 Click [Yes].
  - 11 From the [Monitor/Simulator] menu, point to [Setup communication] and select [Setup communication] to display the [Comm settings] dialog box.
  - 12 Check the connection between the computer and device, and then click [OK]. Communication settings for the connection are set.
  - 13 From the [Monitor/Simulator] menu, select [Transfer to PLC] to display the [Transfer program] dialog box.
  - 14 Select the [Unit setting info] and [Program] check boxes, and then click [Execute]. The settings are transferred.
- This completes the External Device setup.

### ◆ Notes

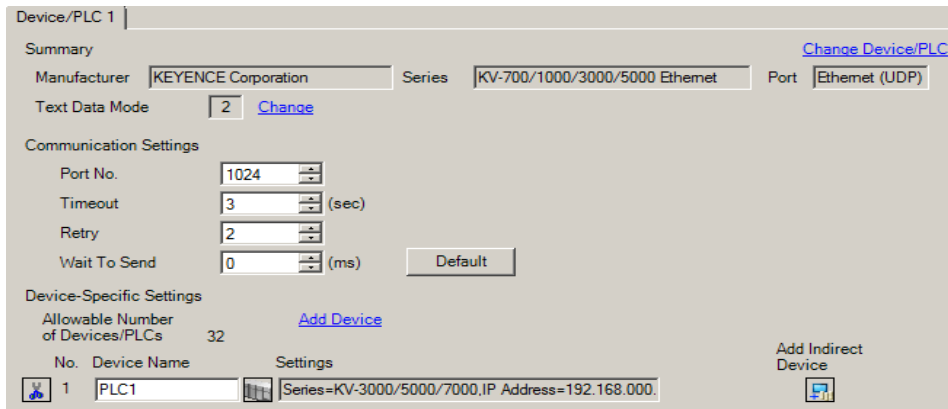
- Check with your network administrator about the IP address you want to use.
- Do not duplicate IP addresses on the same network.

### 3.13 Setting Example 13


#### ■ GP-Pro EX Settings

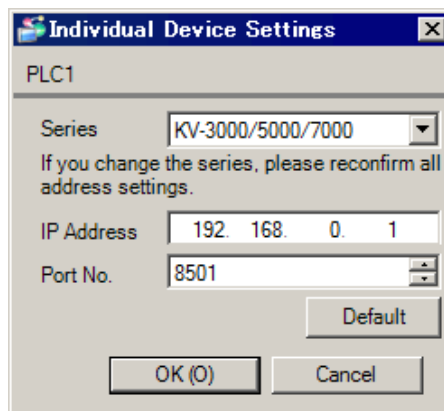
##### ◆ Communication Settings

To display the setup screen, from the [System Settings] workspace, select [Device/PLC].



##### ◆ Device Settings

To display the [Individual Device Settings] dialog box, select the External Device and click  [Settings] from [Device-Specific Settings] in the [Device/PLC] window. To connect multiple External Devices, click [Add Device] from [Device-Specific Settings] in the [Device/PLC] window to add another External Device.



##### ◆ Notes

- Check with your network administrator about the IP address you want to use.
- Do not duplicate IP addresses on the same network.
- In [Individual Device Settings], set the IP address of the External Device.
- Set the Display's IP address in offline mode.
- If you are using a KV-5500 series device, from the [Series] list select [KV-3000/5000].

## ■ External Device Settings

Use the ladder software KV STUDIO Ver. 6 or later to define the External Device communication settings. Refer to your External Device manual for details.

- 1 Start up the ladder software.
- 2 From the [File] menu, select [New project] to display the [New project] dialog box.
- 3 In the [Project name] field enter the project name, in the [PLC model] property select the External Device, and click [OK].
- 4 In the [Confirm unit setting information] dialog box click [Yes], and the [Unit Editor] window will display.
- 5 In the unit placement area, click "KV-5500" and then select the [Setup unit (2)] tab.
- 6 Configure the setup items as follows.

Setup Items	Settings
IP address	192.168.0.1
Subnet mask	255.255.255.0
Default gateway	0.0.0.0
DNS server	0.0.0.0

- 7 From the [Convert] menu, select [Auto-assign relay/DM].
- 8 From the [File] menu, select [Close] and display the [Unit Editor] dialog box.
- 9 Click [Yes].
- 10 From the [Monitor/Simulator] menu, point to [Setup communication] and select [Setup communication] to display the [Comm settings] dialog box.
- 11 Check the connection between the computer and device, and then click [OK]. Communication settings for the connections are set.
- 12 From the [Monitor/Simulator] menu, select [Transfer to PLC] to display the [Transfer program] dialog box.
- 13 Select the [Unit setting info] and [Program] check boxes, and then click [Execute]. The settings are transferred.

This completes the External Device setup.

### ◆ Notes

- Check with your network administrator about the IP address you want to use.
- Do not duplicate IP addresses on the same network.

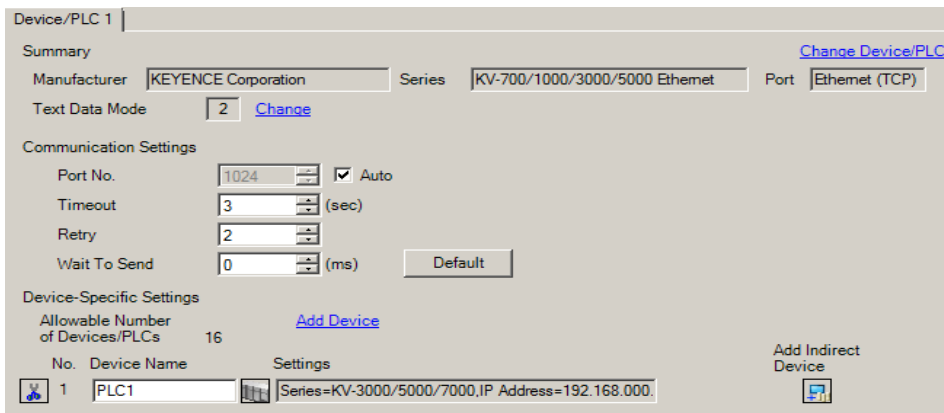


### 3.14 Setting Example 14


#### ■ GP-Pro EX Settings

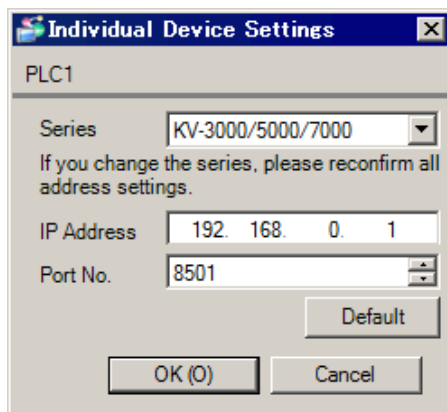
##### ◆ Communication Settings

To display the setup screen, from the [System Settings] workspace, select [Device/PLC].



##### ◆ Device Settings

To display the [Individual Device Settings] dialog box, select the External Device and click  [Settings] from [Device-Specific Settings] in the [Device/PLC] window. To connect multiple External Devices, click [Add Device] from [Device-Specific Settings] in the [Device/PLC] window to add another External Device.



##### ◆ Notes

- Check with your network administrator about the IP address you want to use.
- Do not duplicate IP addresses on the same network.
- In [Individual Device Settings], set the IP address of the External Device.
- Set the Display's IP address in offline mode.
- If you are using a KV-5500 series device, from the [Series] list select [KV-3000/5000].

## ■ External Device Settings

Use the ladder software KV STUDIO Ver. 6 or later to define the External Device communication settings. Refer to your External Device manual for details.

- 1 Start up the ladder software.
- 2 From the [File] menu, select [New project] to display the [New project] dialog box.
- 3 In the [Project name] field enter the project name, in the [PLC model] property select the External Device, and click [OK].
- 4 In the [Confirm unit setting information] dialog box click [Yes], and the [Unit Editor] window will display.
- 5 In the unit placement area, click "KV-5500" and then select the [Setup unit (2)] tab.
- 6 Configure the setup items as follows.

Setup Items	Settings
IP address	192.168.0.1
Subnet mask	255.255.255.0
Default gateway	0.0.0.0
DNS server	0.0.0.0

- 7 From the [Convert] menu, select [Auto-assign relay/DM].
- 8 From the [File] menu, select [Close] and display the [Unit Editor] dialog box.
- 9 Click [Yes].
- 10 From the [Monitor/Simulator] menu, point to [Setup communication] and select [Setup communication] to display the [Comm settings] dialog box.
- 11 Check the connection between the computer and device, and then click [OK]. Communication settings for the connections are set.
- 12 From the [Monitor/Simulator] menu, select [Transfer to PLC] to display the [Transfer program] dialog box.
- 13 Select the [Unit setting info] and [Program] check boxes, and then click [Execute]. The settings are transferred.

This completes the External Device setup.

### ◆ Notes

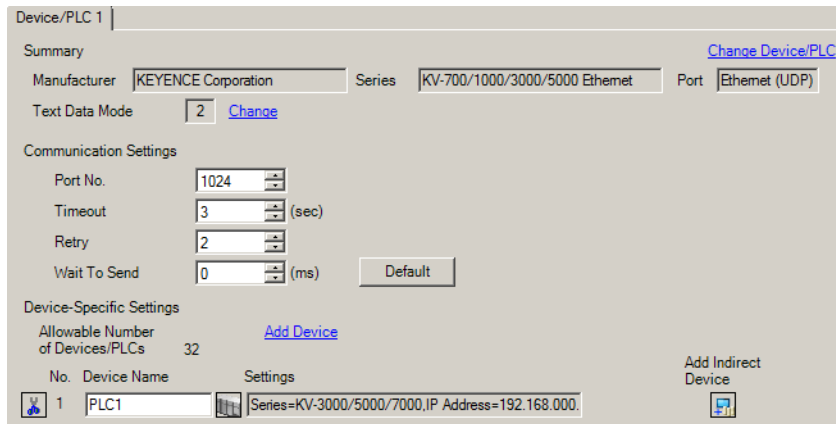
- Check with your network administrator about the IP address you want to use.
- Do not duplicate IP addresses on the same network.

### 3.15 Setting Example 15


#### ■ GP-Pro EX Settings

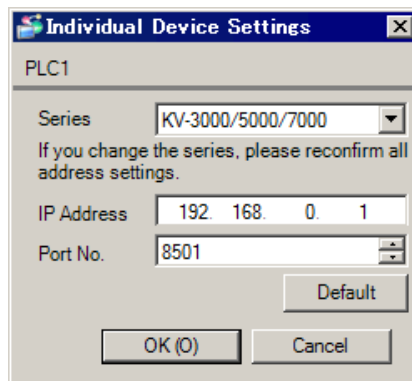
##### ◆ Communication Settings

To display the setup screen, from the [System Settings] workspace, select [Device/PLC].



##### ◆ Device Settings

To display the [Individual Device Settings] dialog box, select the External Device and click  [Settings] from [Device-Specific Settings] in the [Device/PLC] window. To connect multiple External Devices, click [Add Device] from [Device-Specific Settings] in the [Device/PLC] window to add another External Device.



##### ◆ Notes

- Check with your network administrator about the IP address you want to use.
- Do not duplicate IP addresses on the same network.
- In [Individual Device Settings], set the IP address of the External Device.
- Set the Display's IP address in offline mode.

## ■ External Device Settings

Use ladder software KV STUDIO Ver. 8 or later to define the External Device communication settings. Refer to your External Device manual for details.

- 1 Start up the ladder software.
- 2 From the [File] menu, select [New project] to display the [New project] dialog box.
- 3 In the [Project name] field enter the project name, in the [PLC model] property select the External Device, and click [OK].
- 4 In the [Confirm unit setting information] dialog box click [Yes], and the [Unit Editor] window will display.
- 5 On the [Select unit (1)] tab, from the displayed list of units select "KV-LE2\*V", then drag & drop to the unit placement area.
- 6 In the unit placement area click "KV-LE2\*V" and then select the [Setup unit (2)] tab.
- 7 Configure the setup items as follows.

Setup Items	Settings
IP address	192.168.0.1
Subnet mask	255.255.255.0
Default gateway	0.0.0.0
DNS server	0.0.0.0
Keep Alive	0
Port No. (HOST Link)	8501

- 8 From the [Convert] menu, select [Auto-assign relay/DM].
- 9 From the [File] menu, select [Close] and display the [Unit Editor] dialog box.
- 10 Click [Yes].
- 11 From the [Monitor/Simulator] menu, point to [Setup communication] and select [Setup communication] to display the [Comm settings] dialog box.
- 12 Check the connection between the computer and device, and then click [OK]. Communication settings for the connection are set.
- 13 From the [Monitor/Simulator] menu, select [Transfer to PLC] to display the [Transfer program] dialog box.
- 14 Select the [Unit setting info] and [Program] check boxes, and then click [Execute]. The settings are transferred.  
This completes the External Device setup.

### ◆ Notes

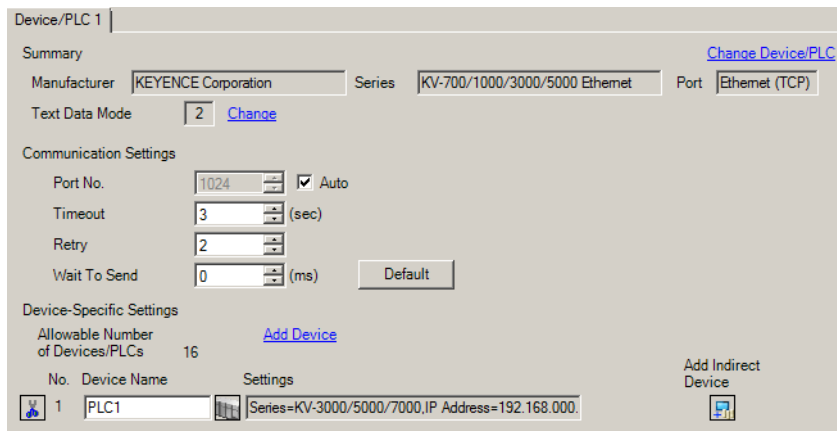
- Check with your network administrator about the IP address you want to use.
- Do not duplicate IP addresses on the same network.

## 3.16 Setting Example 16


### ■ GP-Pro EX Settings

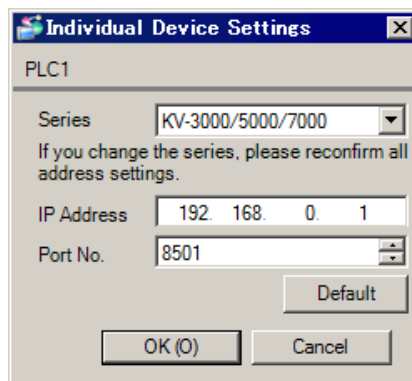
#### ◆ Communication Settings

To display the setup screen, from the [System Settings] workspace, select [Device/PLC].



#### ◆ Device Settings

To display the [Individual Device Settings] dialog box, select the External Device and click  [Settings] from [Device-Specific Settings] in the [Device/PLC] window. To connect multiple External Devices, click [Add Device] from [Device-Specific Settings] in the [Device/PLC] window to add another External Device.



#### ◆ Notes

- Check with your network administrator about the IP address you want to use.
- Do not duplicate IP addresses on the same network.
- In [Individual Device Settings], set the IP address of the External Device.
- Set the Display's IP address in offline mode.

## ■ External Device Settings

Use ladder software KV STUDIO Ver. 8 or later to define the External Device communication settings. Refer to your External Device manual for details.

- 1 Start up the ladder software.
- 2 From the [File] menu, select [New project] to display the [New project] dialog box.
- 3 In the [Project name] field enter the project name, in the [PLC model] property select the External Device, and click [OK].
- 4 In the [Confirm unit setting information] dialog box click [Yes], and the [Unit Editor] window will display.
- 5 On the [Select unit (1)] tab, from the displayed list of units select "KV-LE2\*V", then drag & drop to the unit placement area.
- 6 In the unit placement area click "KV-LE2\*V" and then select the [Setup unit (2)] tab.
- 7 Configure the setup items as follows.

Setup Items	Settings
IP address	192.168.0.1
Subnet mask	255.255.255.0
Default gateway	0.0.0.0
DNS server	0.0.0.0
Keep Alive	0
Port No. (HOST Link)	8501

- 8 From the [Convert] menu, select [Auto-assign relay/DM].
- 9 From the [File] menu, select [Close] and display the [Unit Editor] dialog box.
- 10 Click [Yes].
- 11 From the [Monitor/Simulator] menu, point to [Setup communication] and select [Setup communication] to display the [Comm settings] dialog box.
- 12 Check the connection between the computer and device, and then click [OK]. Communication settings for the connection are set.
- 13 From the [Monitor/Simulator] menu, select [Transfer to PLC] to display the [Transfer program] dialog box.
- 14 Select the [Unit setting info] and [Program] check boxes, and then click [Execute]. The settings are transferred.  
This completes the External Device setup.

### ◆ Notes

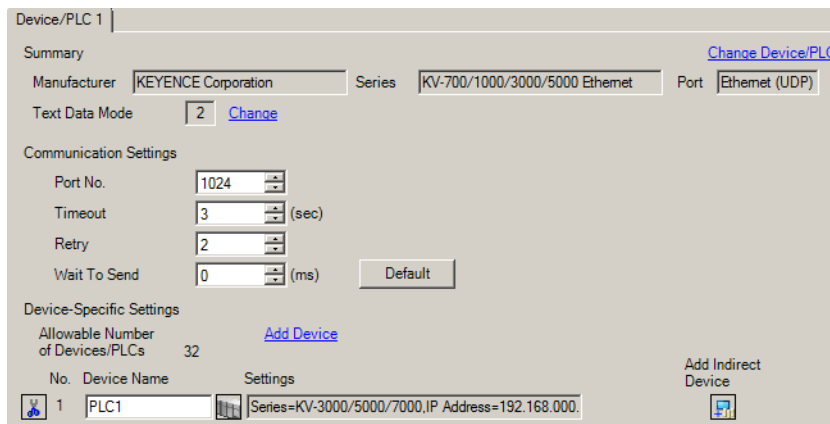
- Check with your network administrator about the IP address you want to use.
- Do not duplicate IP addresses on the same network.

### 3.17 Setting Example 17


#### ■ GP-Pro EX Settings

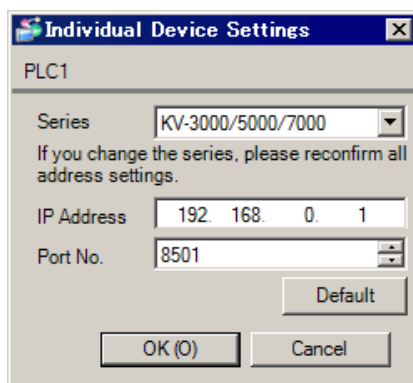
##### ◆ Communication Settings

To display the setup screen, from the [System Settings] workspace, select [Device/PLC].



##### ◆ Device Settings

To display the [Individual Device Settings] dialog box, select the External Device and click  [Settings] from [Device-Specific Settings] in the [Device/PLC] window. To connect multiple External Devices, click [Add Device] from [Device-Specific Settings] in the [Device/PLC] window to add another External Device.



##### ◆ Notes

- Check with your network administrator about the IP address you want to use.
- Do not duplicate IP addresses on the same network.
- In [Individual Device Settings], set the IP address of the External Device.
- Set the Display's IP address in offline mode.

## ■ External Device Settings

Use the ladder software KV STUDIO Ver. 8 or later to define the External Device communication settings. Refer to your External Device manual for details.

- 1 Start up the ladder software.
- 2 From the [File] menu, select [New project] to display the [New project] dialog box.
- 3 In the [Project name] field enter the project name, in the [PLC model] property select the External Device, and click [OK].
- 4 In the [Confirm unit setting information] dialog box click [Yes], and the [Unit Editor] window will display.
- 5 In the unit placement area, click CPU and then select the [Setup unit (2)] tab.
- 6 Configure the setup items as follows.

Setup Items	Settings
IP address	192.168.0.1
Subnet mask	255.255.255.0
Default gateway	0.0.0.0
DNS server	0.0.0.0
Keep Alive	0
Port No. (HOST Link)	8501

- 7 From the [Convert] menu, select [Auto-assign relay/DM].
- 8 From the [File] menu, select [Close] and display the [Unit Editor] dialog box.
- 9 Click [Yes].
- 10 From the [Monitor/Simulator] menu, point to [Setup communication] and select [Setup communication] to display the [Comm settings] dialog box.
- 11 Check the connection between the computer and device, and then click [OK]. Communication settings for the connections are set.
- 12 From the [Monitor/Simulator] menu, select [Transfer to PLC] to display the [Transfer program] dialog box.
- 13 Select the [Unit setting info] and [Program] check boxes, and then click [Execute]. The settings are transferred.  
This completes the External Device setup.

### ◆ Notes

- Check with your network administrator about the IP address you want to use.
- Do not duplicate IP addresses on the same network.




### 3.18 Setting Example 18

#### ■ GP-Pro EX Settings

##### ◆ Communication Settings

To display the setup screen, from the [System Settings] workspace, select [Device/PLC].

##### ◆ Device Settings

To display the [Individual Device Settings] dialog box, select the External Device and click  [Settings] from [Device-Specific Settings] in the [Device/PLC] window. To connect multiple External Devices, click [Add Device] from [Device-Specific Settings] in the [Device/PLC] window to add another External Device.

##### ◆ Notes

- Check with your network administrator about the IP address you want to use.
- Do not duplicate IP addresses on the same network.
- In [Individual Device Settings], set the IP address of the External Device.
- Set the Display's IP address in offline mode.

## ■ External Device Settings

Use the ladder software KV STUDIO Ver. 8 or later to define the External Device communication settings. Refer to your External Device manual for details.

- 1 Start up the ladder software.
- 2 From the [File] menu, select [New project] to display the [New project] dialog box.
- 3 In the [Project name] field enter the project name, in the [PLC model] property select the External Device, and click [OK].
- 4 In the [Confirm unit setting information] dialog box click [Yes], and the [Unit Editor] window will display.
- 5 In the unit placement area, click CPU and then select the [Setup unit (2)] tab.
- 6 Configure the setup items as follows.

Setup Items	Settings
IP address	192.168.0.1
Subnet mask	255.255.255.0
Default gateway	0.0.0.0
DNS server	0.0.0.0
Keep Alive	0
Port No. (HOST Link)	8501

- 7 From the [Convert] menu, select [Auto-assign relay/DM].
- 8 From the [File] menu, select [Close] and display the [Unit Editor] dialog box.
- 9 Click [Yes].
- 10 From the [Monitor/Simulator] menu, point to [Setup communication] and select [Setup communication] to display the [Comm settings] dialog box.
- 11 Check the connection between the computer and device, and then click [OK]. Communication settings for the connections are set.
- 12 From the [Monitor/Simulator] menu, select [Transfer to PLC] to display the [Transfer program] dialog box.
- 13 Select the [Unit setting info] and [Program] check boxes, and then click [Execute]. The settings are transferred.  
This completes the External Device setup.

### ◆ Notes

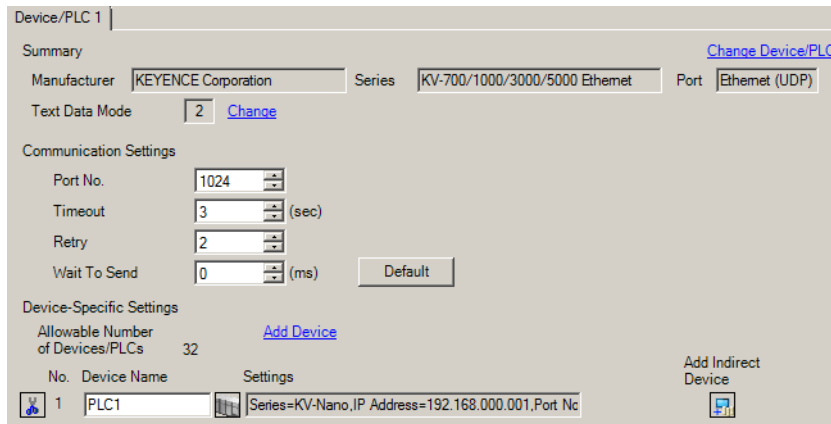
- Check with your network administrator about the IP address you want to use.
- Do not duplicate IP addresses on the same network.

### 3.19 Setting Example 19


#### ■ GP-Pro EX Settings

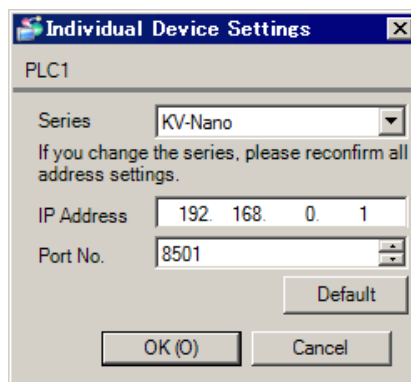
##### ◆ Communication Settings

To display the setup screen, from the [System Settings] workspace, select [Device/PLC].



##### ◆ Device Settings

To display the [Individual Device Settings] dialog box, select the External Device and click  [Settings] from [Device-Specific Settings] in the [Device/PLC] window. To connect multiple External Devices, click [Add Device] from [Device-Specific Settings] in the [Device/PLC] window to add another External Device.



##### ◆ Notes

- Check with your network administrator about the IP address you want to use.
- Do not duplicate IP addresses on the same network.
- In [Individual Device Settings], set the IP address of the External Device.
- Set the Display's IP address in offline mode.

## ■ External Device Settings

Use ladder software KV STUDIO Ver. 8 or later to define the External Device communication settings. Refer to your External Device manual for details.

- 1 Start up the ladder software.
- 2 From the [File] menu, select [New project] to display the [New project] dialog box.
- 3 In the [Project name] field enter the project name, in the [PLC model] property select the External Device, and click [OK].
- 4 In the [Confirm unit setting information] dialog box click [Yes], and the [Unit Editor] window will display.
- 5 On the [Select unit (1)] tab, from the displayed list of units select "KV-NC1EP", then drag & drop to the unit placement area.
- 6 In the unit placement area click "KV-NC1EP" and then select the [Setup unit (2)] tab.
- 7 Configure the setup items as follows.

Setup Items	Settings
IP address	192.168.0.1
Subnet mask	255.255.255.0
Default gateway	0.0.0.0
DNS server	0.0.0.0
Keep Alive	0
Port No. (HOST Link)	8501

- 8 From the [Convert] menu, select [Auto-assign relay/DM].
- 9 From the [File] menu, select [Close] and display the [Unit Editor] dialog box.
- 10 Click [Yes].
- 11 From the [Monitor/Simulator] menu, point to [Setup communication] and select [Setup communication] to display the [Comm settings] dialog box.
- 12 Check the connection between the computer and device, and then click [OK]. Communication settings for the connection are set.
- 13 From the [Monitor/Simulator] menu, select [Transfer to PLC] to display the [Transfer program] dialog box.
- 14 Select the [Unit setting info] and [Program] check boxes, and then click [Execute]. The settings are transferred.  
This completes the External Device setup.

### ◆ Notes

- Check with your network administrator about the IP address you want to use.
- Do not duplicate IP addresses on the same network.


## 3.20 Setting Example 20

### ■ GP-Pro EX Settings

#### ◆ Communication Settings

To display the setup screen, from the [System Settings] workspace, select [Device/PLC].

#### ◆ Device Settings

To display the [Individual Device Settings] dialog box, select the External Device and click  [Settings] from [Device-Specific Settings] in the [Device/PLC] window. To connect multiple External Devices, click [Add Device] from [Device-Specific Settings] in the [Device/PLC] window to add another External Device.

#### ◆ Notes

- Check with your network administrator about the IP address you want to use.
- Do not duplicate IP addresses on the same network.
- In [Individual Device Settings], set the IP address of the External Device.
- Set the Display's IP address in offline mode.

## ■ External Device Settings

Use ladder software KV STUDIO Ver. 8 or later to define the External Device communication settings. Refer to your External Device manual for details.

- 1 Start up the ladder software.
- 2 From the [File] menu, select [New project] to display the [New project] dialog box.
- 3 In the [Project name] field enter the project name, in the [PLC model] property select the External Device, and click [OK].
- 4 In the [Confirm unit setting information] dialog box click [Yes], and the [Unit Editor] window will display.
- 5 On the [Select unit (1)] tab, from the displayed list of units select "KV-NC1EP", then drag & drop to the unit placement area.
- 6 In the unit placement area click "KV-NC1EP" and then select the [Setup unit (2)] tab.
- 7 Configure the setup items as follows.

Setup Items	Settings
IP address	192.168.0.1
Subnet mask	255.255.255.0
Default gateway	0.0.0.0
DNS server	0.0.0.0
Keep Alive	0
Port No. (HOST Link)	8501

- 8 From the [Convert] menu, select [Auto-assign relay/DM].
- 9 From the [File] menu, select [Close] and display the [Unit Editor] dialog box.
- 10 Click [Yes].
- 11 From the [Monitor/Simulator] menu, point to [Setup communication] and select [Setup communication] to display the [Comm settings] dialog box.
- 12 Check the connection between the computer and device, and then click [OK]. Communication settings for the connection are set.
- 13 From the [Monitor/Simulator] menu, select [Transfer to PLC] to display the [Transfer program] dialog box.
- 14 Select the [Unit setting info] and [Program] check boxes, and then click [Execute]. The settings are transferred.  
This completes the External Device setup.

### ◆ Notes

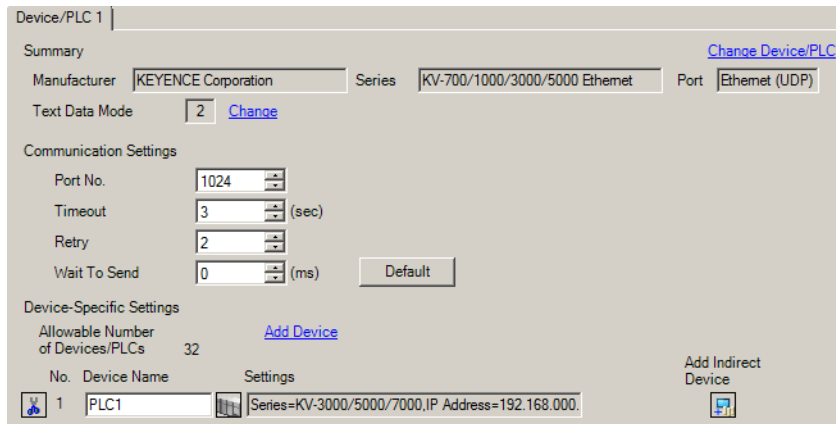
- Check with your network administrator about the IP address you want to use.
- Do not duplicate IP addresses on the same network.

## 3.21 Setting Example 21


### ■ GP-Pro EX Settings

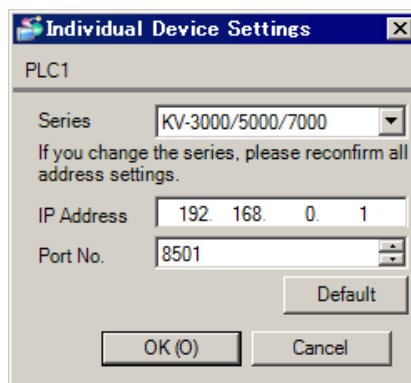
#### ◆ Communication Settings

To display the setup screen, from the [System Settings] workspace, select [Device/PLC].



#### ◆ Device Settings

To display the [Individual Device Settings] dialog box, select the External Device and click  [Settings] from [Device-Specific Settings] in the [Device/PLC] window. To connect multiple External Devices, click [Add Device] from [Device-Specific Settings] in the [Device/PLC] window to add another External Device.



#### ◆ Notes

- Check with your network administrator about the IP address you want to use.
- Do not duplicate IP addresses on the same network.
- In [Individual Device Settings], set the IP address of the External Device.
- Set the Display's IP address in offline mode.

## ■ External Device Settings

Use ladder software KV STUDIO Ver. 8 or later to define the External Device communication settings. Refer to your External Device manual for details.

- 1 Start up the ladder software.
- 2 From the [File] menu, select [New project] to display the [New project] dialog box.
- 3 In the [Project name] field enter the project name, in the [PLC model] property select the External Device, and click [OK].
- 4 In the [Confirm unit setting information] dialog box click [Yes], and the [Unit Editor] window will display.
- 5 On the [Select unit (1)] tab, from the displayed list of units select "KV-EP2\*V", then drag & drop to the unit placement area.
- 6 In the unit placement area click "KV-EP2\*V" and then select the [Setup unit (2)] tab.
- 7 Configure the setup items as follows.

Setup Items	Settings
IP address	192.168.0.1
Subnet mask	255.255.255.0
Default gateway	0.0.0.0
DNS server	0.0.0.0
Keep Alive	0
Port No. (HOST Link)	8501

- 8 From the [Convert] menu, select [Auto-assign relay/DM].
- 9 From the [File] menu, select [Close] and display the [Unit Editor] dialog box.
- 10 Click [Yes].
- 11 From the [Monitor/Simulator] menu, point to [Setup communication] and select [Setup communication] to display the [Comm settings] dialog box.
- 12 Check the connection between the computer and device, and then click [OK]. Communication settings for the connection are set.
- 13 From the [Monitor/Simulator] menu, select [Transfer to PLC] to display the [Transfer program] dialog box.
- 14 Select the [Unit setting info] and [Program] check boxes, and then click [Execute]. The settings are transferred.  
This completes the External Device setup.

### ◆ Notes

- Check with your network administrator about the IP address you want to use.
- Do not duplicate IP addresses on the same network.

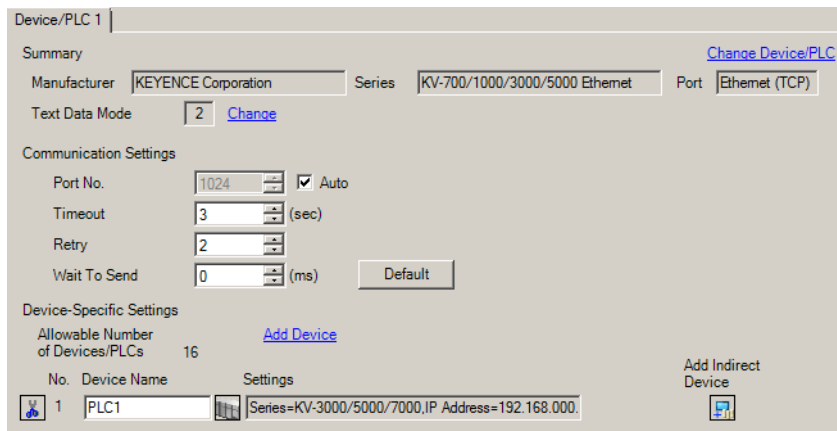


## 3.22 Setting Example 22


### ■ GP-Pro EX Settings

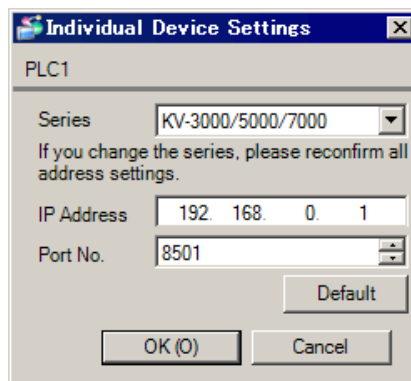
#### ◆ Communication Settings

To display the setup screen, from the [System Settings] workspace, select [Device/PLC].



#### ◆ Device Settings

To display the [Individual Device Settings] dialog box, select the External Device and click  [Settings] from [Device-Specific Settings] in the [Device/PLC] window. To connect multiple External Devices, click [Add Device] from [Device-Specific Settings] in the [Device/PLC] window to add another External Device.



#### ◆ Notes

- Check with your network administrator about the IP address you want to use.
- Do not duplicate IP addresses on the same network.
- In [Individual Device Settings], set the IP address of the External Device.
- Set the Display's IP address in offline mode.

## ■ External Device Settings

Use ladder software KV STUDIO Ver. 8 or later to define the External Device communication settings. Refer to your External Device manual for details.

- 1 Start up the ladder software.
- 2 From the [File] menu, select [New project] to display the [New project] dialog box.
- 3 In the [Project name] field enter the project name, in the [PLC model] property select the External Device, and click [OK].
- 4 In the [Confirm unit setting information] dialog box click [Yes], and the [Unit Editor] window will display.
- 5 On the [Select unit (1)] tab, from the displayed list of units select "KV-EP2\*V", then drag & drop to the unit placement area.
- 6 In the unit placement area click "KV-EP2\*V" and then select the [Setup unit (2)] tab.
- 7 Configure the setup items as follows.

Setup Items	Settings
IP address	192.168.0.1
Subnet mask	255.255.255.0
Default gateway	0.0.0.0
DNS server	0.0.0.0
Keep Alive	0
Port No. (HOST Link)	8501

- 8 From the [Convert] menu, select [Auto-assign relay/DM].
- 9 From the [File] menu, select [Close] and display the [Unit Editor] dialog box.
- 10 Click [Yes].
- 11 From the [Monitor/Simulator] menu, point to [Setup communication] and select [Setup communication] to display the [Comm settings] dialog box.
- 12 Check the connection between the computer and device, and then click [OK]. Communication settings for the connection are set.
- 13 From the [Monitor/Simulator] menu, select [Transfer to PLC] to display the [Transfer program] dialog box.
- 14 Select the [Unit setting info] and [Program] check boxes, and then click [Execute]. The settings are transferred.  
This completes the External Device setup.

### ◆ Notes

- Check with your network administrator about the IP address you want to use.
- Do not duplicate IP addresses on the same network.

## 4 Setup Items

Set up the Display's communication settings in GP-Pro EX or in the Display's offline mode.

The setting of each parameter must match that of the External Device.

 "3 Communication Settings" (page 7)

### NOTE

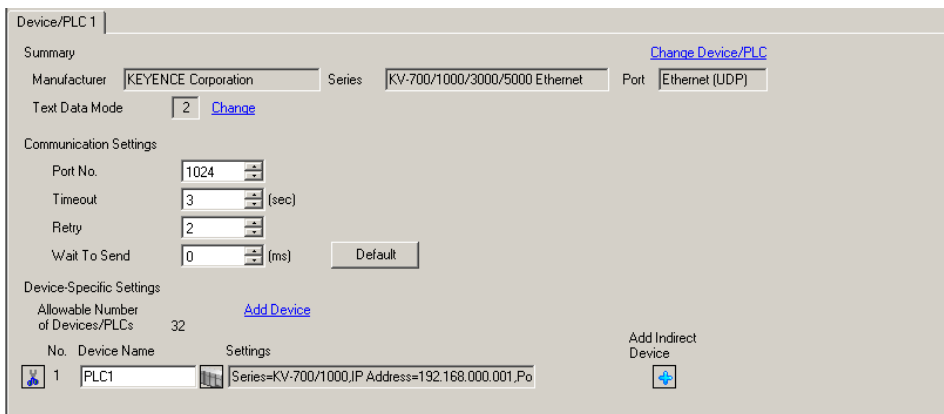
- Set the Display's IP address in offline mode.

Cf. Maintenance/Troubleshooting Guide "Ethernet Settings"

### 4.1 Setup Items in GP-Pro EX

#### ■ Communication Settings

To display the setup screen, from the [System Settings] workspace, select [Device/PLC].



Device/PLC 1

Summary [Change Device/PLC](#)

Manufacturer: KEYENCE Corporation Series: KV-700/1000/3000/5000 Ethernet Port: Ethernet (UDP)

Text Data Mode: 2 [Change](#)

Communication Settings

Port No.: 1024

Timeout: 3 (sec)

Retry: 2

Wait To Send: 0 (ms) [Default](#)

Device-Specific Settings

Allowable Number of Devices/PLCs: 32 [Add Device](#)


No.	Device Name	Settings	Add Indirect Device
1	PLC1	Series=KV-700/1000,IP Address=192.168.000.001,Port=1024	<a href="#">+</a>

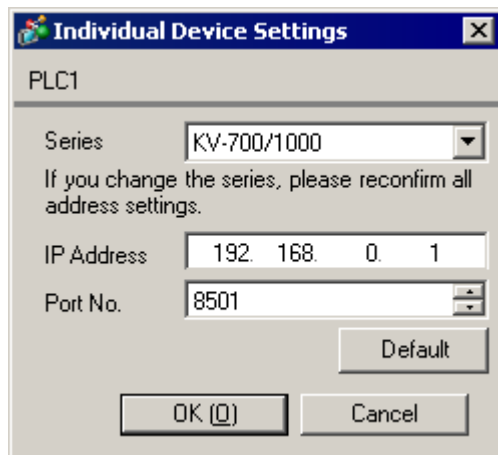
Setup Items	Setup Description
Port No.	Use an integer from "1024 to 65535" to enter the port number of the Display. If you check [Auto], the port number will be automatically set. <b>NOTE</b> • [Auto] option is available to set only when you select "Ethernet (TCP)" in [Connection Method].
Timeout	Enter the time(s) for which the Display waits for the response from the External Device, from "1 to 127".
Retry	In case of no response from the External Device, enter how many times the Display retransmits the command, from "0 to 255".
Wait To Send	Enter the standby time (ms) from when the Display receives packets until it transmits the next command, from "0 to 255".

### NOTE

- Refer to the GP-Pro EX Reference Manual for information on Indirect Devices.

## ■ Device Settings

To display the [Individual Device Settings] dialog box, select the external device and click  [Settings] from [Device-Specific Settings] in the [Device/PLC] window. To connect multiple External Devices, click [Add Device] from [Device-Specific Settings] in the [Device/PLC] window to add another External Device.



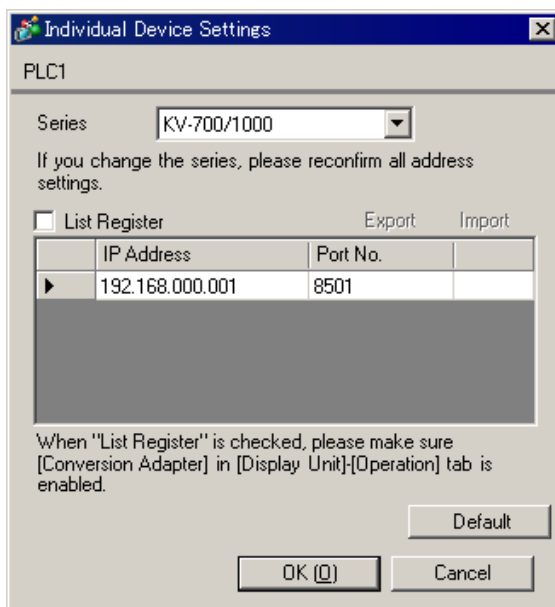
Setup Items	Setup Description
Series	Select the series of the External Device.
IP Address	Set the IP address of the External Device. <b>NOTE</b> <ul style="list-style-type: none"> <li>• Check with your network administrator about the IP address you want to use.</li> <li>• Do not duplicate IP addresses on the same network.</li> </ul>
Port No.	Use an integer from "1024 to 65535" to enter the port number of the External Device. <b>IMPORTANT</b> <ul style="list-style-type: none"> <li>• Only one display can be connected to one port.</li> </ul>

◆ When using the Hand-held GP

When the display unit you are using is the Hand-held GP, the following [Individual Device Settings] dialog box will display.

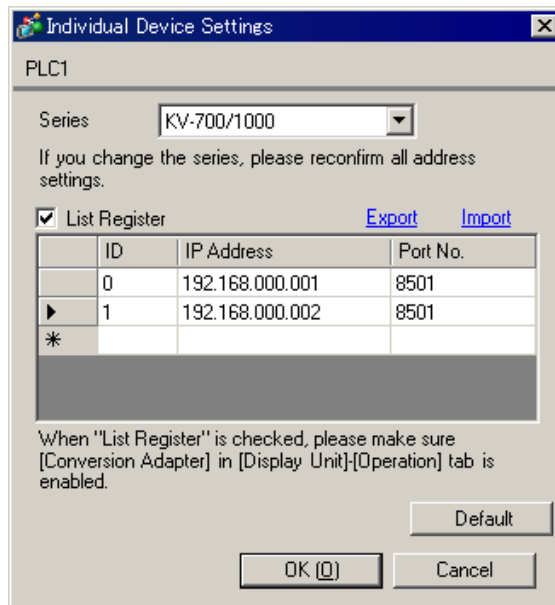
To switch communication External Devices with ID number (rotary switch) of the GP3000H Conversion Adaptor, the List Register needs to be used.

- <When the List Register is not used>



Setup Items	Setup Description
Series	Select the series of the External Device.
List Register	Remove the check from the [List Register] box.
IP Address	Set the IP address of the External Device. <b>NOTE</b> <ul style="list-style-type: none"> <li>• Check with your network administrator about the IP address you want to use.</li> <li>• Do not duplicate IP addresses on the same network.</li> </ul>
Port No.	Use an integer from "1024 to 65535" to enter the port number of the External Device. <b>IMPORTANT</b> <ul style="list-style-type: none"> <li>• Only one display can be connected to one port.</li> </ul>

- <When the List Register is used>



Setup Items	Setup Description
Series	Select the series of the External Device.
List Register	Put a check in the [List Register] box. <b>IMPORTANT</b> <ul style="list-style-type: none"> <li>• Select the [Display Unit]-[Operation] tab from the workspace [System Settings], and put a check in "Enable" of the [Conversion Adapter].</li> </ul>
Export	List information is exported in the comma-delimited CSV file. ☞ " ◆ Export Procedures of Device Settings" (page 55)
Import	List information described in the comma-delimited CSV file is imported. ☞ " ◆ Import Procedures of Device Settings" (page 55)
ID	Use an integer from "0 to 255" to enter the ID number (rotary switch) of the GP3000H Conversion Adaptor.
IP Address	Set the IP address of the External Device. <b>NOTE</b> <ul style="list-style-type: none"> <li>• Check with your network administrator about the IP address you want to use.</li> <li>• Do not duplicate IP addresses on the same network.</li> </ul>
Port No.	Use an integer from "1024 to 65535" to enter the port number of the External Device. <b>IMPORTANT</b> <ul style="list-style-type: none"> <li>• Only one display can be connected to one port.</li> </ul>

**◆ Export Procedures of Device Settings**

- 1 Click [Export] in the [Individual Device Settings] dialog box and display the [Export] dialog box.
- 2 Input the file name and click [Save].

**◆ Import Procedures of Device Settings**

- 1 Click [Import] in the [Individual Device Settings] dialog box and display the [Import] dialog box.
- 2 Select the CSV file and click [Open].

## 4.2 Setup Items in Offline Mode

**NOTE**

- Refer to the Maintenance/Troubleshooting guide for information on how to enter offline mode or about the operation.

Cf. Maintenance/Troubleshooting Guide "Offline Mode"

### ■ Communication Settings

To display the setting screen, touch [Device/PLC Settings] from [Peripheral Settings] in offline mode. Touch the External Device you want to set from the displayed list.

Comm.	Device			
KV-700/1000/3000/5000 Ethernet		[UDP]	Page 1/1	
Port No.	<input type="radio"/> Fixed <input checked="" type="radio"/> Auto	<input type="text" value="1024"/> ▼ ▲		
Timeout(s)	<input type="text" value="3"/> ▼ ▲			
Retry	<input type="text" value="2"/> ▼ ▲			
Wait To Send(ms)	<input type="text" value="0"/> ▼ ▲			
Exit		Back		2008/01/08 19:14:25

Setup Items	Setup Description
Port No.	Set the Port No. of the Display. In UDP connection, the entered port number will be assigned regardless of whether you select [Fixed] or [Auto]. In TCP connection, select either of [Fixed] or [Auto]. When you select [Fixed], use an integer from "1024 to 65535" to enter the port number of the Display. When you select [Auto], the port number will be automatically assigned regardless of the entered value.
Timeout	Enter the time(s) for which the Display waits for a response from the External Device, from "1 to 127".
Retry	In case of no response from the External Device, enter how many times the Display retransmits the command, from "0 to 255".
Wait To Send	Enter the standby time (ms) from when the Display receives packets until it transmits the next command, from "0 to 255".



## ■ Device Settings

To display the setting screen, touch [Device/PLC Settings] from [Peripheral Settings]. Touch the External Device you want to set from the displayed list, and touch [Device Settings].

Comm.	Device			
KV-700/1000/3000/5000 Ethernet		[UDP]	Page 1/1	
Device/PLC Name	PLC1			
Series	KV-700/1000			
IP Address	192 168 0 1			
Port No.	8501			
Exit		Back		2008/01/08 19:14:30

Setup Items	Setup Description
Device/PLC Name	Select the External Device to set. Device/PLC Name is the title of the External Device set with GP-Pro EX. (Initial value [PLC1])
Series	Displays the series of the External Device.
IP Address	Set the IP address of the External Device. <b>NOTE</b> <ul style="list-style-type: none"> <li>• Check with your network administrator about the IP address you want to use.</li> <li>• Do not duplicate IP addresses on the same network.</li> </ul>
Port No.	Use an integer from "1024 to 65535" to enter the port number of the External Device. <b>IMPORTANT</b> <ul style="list-style-type: none"> <li>• Only one display can be connected to one port.</li> </ul>

**NOTE** • When using GP-4400/4500/4600 Series, even though the Device setting screen shows the [List Register], its settings are ignored.

## ◆ When using the Hand-held GP


Comm.	Device			
KV-700/1000/3000/5000 Ethernet		[UDP]	Page 1/1	
Device/PLC Name		PLC1		
Series		KV-700/1000		
IP Address		192 168 0 1		
Port No.		8501		
List Register		OFF		
Exit		Back		2008/10/14 06:15:50



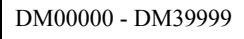
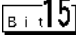
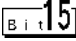
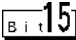
Setup Items	Setup Description
Device/PLC Name	Select the External Device to set. Device/PLC Name is the title of the External Device set with GP-Pro EX. (Initial value [PLC1])
Series	Displays the series of the External Device.
IP Address	Set the IP address of the External Device. <b>NOTE</b> <ul style="list-style-type: none"> <li>• Check with your network administrator about the IP address you want to use.</li> <li>• Do not duplicate IP addresses on the same network.</li> </ul>
Port No.	Use an integer from "1024 to 65535" to enter the port number of the External Device. <b>IMPORTANT</b> <ul style="list-style-type: none"> <li>• Only one display can be connected to one port.</li> </ul>
List Register	Display the settings of the List Register. <b>NOTE</b> <ul style="list-style-type: none"> <li>• Setting content of the List Register cannot be displayed or changed in the offline mode.</li> </ul>

## 5 Supported Devices

The following table shows the range of supported device addresses. Note that the actually supported range varies depending on the External Device. Consult your External Device manual for the range.

### 5.1 KV-700 Series

 : This address can be specified as system data area.

Device	Bit Address	Word Address	32 bits	Remarks
Input Relay	00000 - 59915	000 - 599		
Output Relay				
Internal Auxiliary Relay				
Control Relay	CR0000 - CR3915	CR00 - CR39		
Timer (Contact)	T000 - T511	-----	-	
Counter (Contact)	C000 - C511	-----		
High-speed Counter Comparator (Contact)	CTC0 - CTC3	-----		*1
Timer (Setting Value)	-----	TS000 - TS511		*2
Counter (Setting Value)	-----	CS000 - CS511		*2
Timer (Current Value)	-----	TC000 - TC511		*2
Counter (Current Value)	-----	CC000 - CC511		*2
Data Memory	-----	 DM00000 - DM39999		 *3
Temporary Data Memory	-----	TM000 - TM511		
Control Memory	-----	CM0000 - CM3999		
Digital Trimmer	-----	TRM0 - TRM7		*1 *2
High-speed Counter (Current Value)	-----	CTH0 - CTH1		*2
High-speed Counter Comparator (Setting Value)	-----	CTC0 - CTC3		*2

\*1 Write disable

\*2 32-bit device

\*3 To use DM20000 to DM39999, you need to install extended memory.

#### NOTE

- Refer to the GP-Pro EX Reference Manual for system data area.

Cf. GP-Pro EX Reference Manual "LS Area (Direct Access Method Area)"

- Refer to the precautions on manual notation for icons in the table.

 "Manual Symbols and Terminology"

## 5.2 KV-1000 Series

     : This address can be specified as system data area.

Device	Bit Address	Word Address	32 bits	Remarks	
Input Relay	00000 - 59915	000 - 599	L / H	*1	
Output Relay				*1	
Internal Auxiliary Relay				*1	
Internal Auxiliary Relay	MR00000 - MR99915	MR000 - MR999	L / H		
Latch Relay	LR00000 - LR99915	LR000 - LR999			
Control Relay	CR00000 - CR3915	CR00 - CR39			
Timer (Contact)	T0000 - T3999	-----			
Counter (Contact)	C0000 - C3999	-----	-		
High-speed Counter Comparator (Contact)	CTC0 - CTC3	-----		*2	
Timer (Setting Value)	-----	TS0000 - TS3999	L / H	*3	
Counter (Setting Value)	-----	CS0000 - CS3999		*3	
Timer (Current Value)	-----	TC0000 - TC3999		*3	
Counter (Current Value)	-----	CC0000 - CC3999		*3	
Data Memory	-----	DM00000 - DM65534		Bit 15	
Extension Data Memory	-----	EM00000 - EM65534		Bit 15	
Extension Data Memory	-----	FM00000 - FM32766		Bit 15	
Temporary Data Memory	-----	TM000 - TM511		Bit 15	
Control Memory	-----	CM00000 - CM11998		Bit 15	
Index Register	-----	Z01 - Z12		Bit 15	*4
Digital Trimmer	-----	TRM0 - TRM7			*2 *3
High-speed Counter (Current Value)	-----	CTH0 - CTH1			*3
High-speed Counter Comparator (Setting Value)	-----	CTC0 - CTC3			*3


\*1 KV-1000 shows R000 to R599 (R00000 to R59915); the Display, on the other hand, shows 000 to 599 (00000 to 59915).

\*2 Write disable


\*3 32-bit device

\*4 Z11 and Z12, used by the External Device system, are not available to write in.

**NOTE**

- Refer to the GP-Pro EX Reference Manual for system data area.  
Cf. GP-Pro EX Reference Manual "LS Area (Direct Access Method Area)"
- Refer to the precautions on manual notation for icons in the table.  
 "Manual Symbols and Terminology"

## 5.3 KV-3000/5000/5500 Series

 : This address can be specified as system data area.

Device		Bit Address	Word Address	32 bits	Remarks	
Input Relay		R00000 - R99915	R000 - R999	<b>L/H</b>		
Output Relay						
Internal Auxiliary Relay						
Link Relay		B0000 - B3FFF	B000 - B3FF			
Internal Auxiliary Relay		MR00000 - MR99915	MR000 - MR999			
Latch Relay		LR00000 - LR99915	LR000 - LR999			
Control Relay		CR0000 - CR3915	CR00 - CR39			
Work Relay		VB0000 - VB3FFF	VB000 - VB3FF			
Timer (Contact)		T0000 - T3999	-----		-	
Counter (Contact)		C0000 - C3999	-----			
High-speed Counter Comparator (Contact)		CTC0 - CTC3	-----	*1		
Timer (Setting Value)		-----	TS0000 - TS3999	<b>L/H</b>	*2	
Counter (Setting Value)		-----	CS0000 - CS3999		*2	
Timer (Current Value)		-----	TC0000 - TC3999		*2	
Counter (Current Value)		-----	CC0000 - CC3999		*2	
Data Memory		-----	<b>DM00000 - DM65534</b>		<b>Bit 15</b>	
Extension Data Memory		-----	EM00000 - EM65534		<b>Bit 15</b>	
File Register	Current Bank	-----	FM00000 - FM32767		<b>Bit 15</b>	
	Serial Number System	-----	ZF000000 - ZF131071		<b>Bit 15</b>	
Temporary Data Memory		-----	TM000 - TM511		<b>L/H</b>	<b>Bit 15</b>
Control Memory		-----	CM00000 - CM05999		<b>Bit 15</b>	
Link Register		-----	W0000 - W3FFF	<b>Bit F</b>		
Work Memory		-----	VM00000 - VM59999	<b>Bit 15</b>		
Index Register		-----	Z01 - Z12		*2 *3	
Digital Trimmer		-----	TRM0 - TRM7		*1 *2	
High-speed Counter (Current Value)		-----	CTH0 - CTH1		*2	
High-speed Counter Comparator (Setting Value)		-----	CTC0 - CTC3		*2	


\*1 Write disable

\*2 32-bit device


\*3 Z11 and Z12, used by the External Device system, are not available to write in.

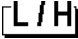
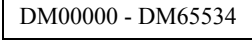




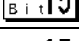

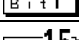
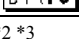
---

**NOTE**

- Refer to the GP-Pro EX Reference Manual for system data area.  
Cf. GP-Pro EX Reference Manual "LS Area (Direct Access Method Area)"
  - Refer to the precautions on manual notation for icons in the table.  
 "Manual Symbols and Terminology"
-

## 5.4 KV-7000 Series

 : This address can be specified as system data area.

Device	Bit Address	Word Address	32 bits	Remarks	
Input Relay	R00000 - R99915	R000 - R999			
Output Relay					
Internal Auxiliary Relay					
Link Relay	B0000 - B7FFF	B000 - B7FF			
Internal Auxiliary Relay	MR000000 - MR399915	MR0000 - MR3999			*1
Latch Relay	LR00000 - LR99915	LR000 - LR999			
Control Relay	CR0000 - CR7915	CR00 - CR79			
Work Relay	VB0000 - VBF9FF	VB000 - VBF9F			
Timer (Contact)	T0000 - T3999	-----		-	
Counter (Contact)	C0000 - C3999	-----			
Timer (Setting Value)	-----	TS0000 - TS3999		*2	
Counter (Setting Value)	-----	CS0000 - CS3999		*2	
Timer (Current Value)	-----	TC0000 - TC3999		*2	
Counter (Current Value)	-----	CC0000 - CC3999		*2	
Data Memory	-----	 DM00000 - DM65534			
Extension Data Memory	-----	EM00000 - EM65534			
File Register	Current Bank	-----	FM00000 - FM32767		
	Serial Number System	-----	ZF000000 - ZF524287		
Temporary Data Memory	-----	TM000 - TM511			
Control Memory	-----	CM0000 - CM5999			
Link Register	-----	W0000 - W7FFF			
Work Memory	-----	VM00000 - VM50999			
Index Register	-----	Z01 - Z12		*2 *3	
Digital Trimmer	-----	TRM0 - TRM7		*2 *4	

\*1 When using KV-EP21V, KV-LE21V or KV-LE20V, the bit addresses are MR00000 - MR99915 and word addresses are MR000 - MR999.


\*2 32-bit device

\*3 Z11 and Z12, used by the External Device system, are not available to write in.

\*4 Write disable.



**NOTE**

- Refer to the GP-Pro EX Reference Manual for system data area.  
Cf. GP-Pro EX Reference Manual "LS Area (Direct Access Method Area)"
- Refer to the precautions on manual notation for icons in the table.  
 "Manual Symbols and Terminology"

## 5.5 KV-Nano Series

     : This address can be specified as system data area.


Device	Bit Address	Word Address	32 bits	Remarks	
Input Relay	R00000 - R59915	R000 - R599			
Output Relay					
Internal Auxiliary Relay					
Link Relay	B0000 - B1FFF	B000 - B1FF			
Internal Auxiliary Relay	MR00000 - MR59915	MR000 - MR599	<span style="border: 1px solid black; padding: 2px;">L/H</span>		
Latch Relay	LR00000 - LR19915	LR000 - LR199			
Control Relay	CR0000 - CR8915	CR00 - CR89			
Work Relay	VB0000 - VB1FFF	VB000 - VB1FF			
Timer (Contact)	T0000 - T0511	-----		-	
Counter (Contact)	C0000 - C0255	-----			
High-speed Counter Comparator (Contact)	CTC0 - CTC7	-----			*1
Timer (Setting Value)	-----	TS0000 - TS0511	<span style="border: 1px solid black; padding: 2px;">L/H</span>	*2	
Counter (Setting Value)	-----	CS0000 - CS0255		*2	
Timer (Current Value)	-----	TC0000 - TC0511		*2	
Counter (Current Value)	-----	CC0000 - CC0255		*2	
Data Memory	-----	<span style="border: 1px solid black; padding: 2px;">DM00000 - DM32767</span>		<span style="border: 1px solid black; padding: 2px;">Bit 15</span>	
Temporary Data Memory	-----	TM000 - TM511		<span style="border: 1px solid black; padding: 2px;">Bit 15</span>	
Control Memory	-----	CM00000 - CM08999		<span style="border: 1px solid black; padding: 2px;">Bit 15</span>	
Link Register	-----	W0000 - W3FFF		<span style="border: 1px solid black; padding: 2px;">Bit F</span>	
Work Memory	-----	VM00000 - VM09499		<span style="border: 1px solid black; padding: 2px;">Bit 15</span>	
Index Register	-----	Z01 - Z12		*2 *3	
High-speed Counter (Current Value)	-----	CTH0 - CTH3		*2	
High-speed Counter Comparator (Setting Value)	-----	CTC0 - CTC7		*2	

\*1 Write disable

\*2 32-bit device

\*3 Z11 and Z12, used by the External Device system, are not available to write in.

**NOTE**

- Refer to the GP-Pro EX Reference Manual for system data area.  
Cf. GP-Pro EX Reference Manual "LS Area (Direct Access Method Area)"
- Refer to the precautions on manual notation for icons in the table.  
 "Manual Symbols and Terminology"

## 6 Device Code and Address Code

Use device code and address code if you select "Device Type & Address" for the address type in Data Displays.

### 6.1 KV-700 Series

Device	Device Name	Device Code (HEX)	Address Code
Input Relay	----	0080	Word Address
Output Relay			
Internal Auxiliary Relay			
Control Relay	CR	008A	Word Address
Timer (Setting Value)	TS	0062	Double Word Address
Counter (Setting Value)	CS	0063	Double Word Address
Timer (Current Value)	TC	0060	Double Word Address
Counter (Current Value)	CC	0061	Double Word Address
Data Memory	DM	0000	Word Address
Temporary Data Memory	TM	0001	Word Address
Control Memory	CM	0002	Word Address
Digital Trimmer	TRM	0064	Double Word Address
High-speed Counter (Current Value)	CTH	0065	Double Word Address
High-speed Counter Comparator (Setting Value)	CTC	0066	Double Word Address

## 6.2 KV-1000 Series

Device	Device Name	Device Code (HEX)	Address Code
Input Relay	-----	0080	Word Address
Output Relay			
Internal Auxiliary Relay			
Internal Auxiliary Relay	MR	0082	Word Address
Latch Relay	LR	0084	Word Address
Control Relay	CR	008A	Word Address
Timer (Setting Value)	TS	0062	Double Word Address
Counter (Setting Value)	CS	0063	Double Word Address
Timer (Current Value)	TC	0060	Double Word Address
Counter (Current Value)	CC	0061	Double Word Address
Data Memory	DM	0000	Word Address
Extension Data Memory	EM	0010	Word Address
Extension Data Memory	FM	0011	Word Address
Temporary Data Memory	TM	0001	Word Address
Control Memory	CM	0002	Word Address
Index Register	Z	0003	Word Address
Digital Trimmer	TRM	0064	Double Word Address
High-speed Counter (Current Value)	CTH	0065	Double Word Address
High-speed Counter Comparator (Setting Value)	CTC	0066	Double Word Address

## 6.3 KV-3000/5000/5500 Series

Device		Device Name	Device Code (HEX)	Address Code
Input Relay		R	0080	Word Address
Output Relay				
Internal Auxiliary Relay				
Link Relay		B	008B	Word Address
Internal Auxiliary Relay		MR	0082	Word Address
Latch Relay		LR	0084	Word Address
Control Relay		CR	008A	Word Address
Work Relay		VB	008C	Word Address
Timer (Setting Value)		TS	0062	Double Word Address
Counter (Setting Value)		CS	0063	Double Word Address
Timer (Current Value)		TC	0060	Double Word Address
Counter (Current Value)		CC	0061	Double Word Address
Data Memory		DM	0000	Word Address
Extension Data Memory		EM	0010	Word Address
File Register	Current Bank	FM	0011	Word Address
	Serial Number System	ZF	0012	Word Address
Temporary Data Memory		TM	0001	Word Address
Control Memory		CM	0002	Word Address
Link Register		W	0013	Word Address
Work Memory		VM	0014	Word Address
Index Register		Z	0067	Double Word Address
Digital Trimmer		TRM	0064	Double Word Address
High-speed Counter (Current Value)		CTH	0065	Double Word Address
High-speed Counter Comparator (Setting Value)		CTC	0066	Double Word Address

## 6.4 KV-7000 Series

Device		Device Name	Device Code (HEX)	Address Code
Input Relay		R	0080	Word Address
Output Relay				
Internal Auxiliary Relay				
Link Relay		B	008B	Word Address
Internal Auxiliary Relay		MR	0082	Word Address
Latch Relay		LR	0084	Word Address
Control Relay		CR	008A	Word Address
Work Relay		VB	008C	Word Address
Timer (Setting Value)		TS	0062	Double Word Address
Counter (Setting Value)		CS	0063	Double Word Address
Timer (Current Value)		TC	0060	Double Word Address
Counter (Current Value)		CC	0061	Double Word Address
Data Memory		DM	0000	Word Address
Extension Data Memory		EM	0010	Word Address
File Register	Current Bank	FM	0011	Word Address
	Serial Number System	ZF	0012	Word Address
Temporary Data Memory		TM	0001	Word Address
Control Memory		CM	0002	Word Address
Link Register		W	0013	Word Address
Work Memory		VM	0014	Word Address
Index Register		Z	0067	Double Word Address
Digital Trimmer		TRM	0064	Double Word Address

## 6.5 KV-Nano Series

Device	Device Name	Device Code (HEX)	Address Code
Input Relay	R	0080	Word Address
Output Relay			
Internal Auxiliary Relay			
Link Relay	B	008B	Word Address
Internal Auxiliary Relay	MR	0082	Word Address
Latch Relay	LR	0084	Word Address
Control Relay	CR	008A	Word Address
Work Relay	VB	008C	Word Address
Timer (Setting Value)	TS	0062	Double Word Address
Counter (Setting Value)	CS	0063	Double Word Address
Timer (Current Value)	TC	0060	Double Word Address
Counter (Current Value)	CC	0061	Double Word Address
Data Memory	DM	0000	Word Address
Temporary Data Memory	TM	0001	Word Address
Control Memory	CM	0002	Word Address
Link Register	W	0013	Word Address
Work Memory	VM	0014	Word Address
Index Register	Z	0067	Double Word Address
High-speed Counter (Current Value)	CTH	0065	Double Word Address
High-speed Counter Comparator (Setting Value)	CTC	0066	Double Word Address



## 7 Error Messages

Error messages are displayed on the Display screen as follows: "No.: Device Name: Error Message (Error Occurrence Area)". Each description is shown below.

Item	Description
No.	Error No.
Device Name	Name of the External Device where an error has occurred. Device name is the title of the External Device set with GP-Pro EX. (Initial value [PLC1])
Error Message	Displays messages related to an error that has occurred.
Error Occurrence Area	<p>Displays the IP address or device address of the External Device where an error has occurred, or error codes received from the External Device.</p> <p><b>NOTE</b></p> <ul style="list-style-type: none"> <li>• IP address is displayed as "IP address (Decimal): MAC address (Hex)".</li> <li>• Device address is displayed as "Address: Device address".</li> <li>• Received error codes are displayed as "Decimal [Hex]".</li> </ul>

Display Examples of Error Messages

"RHAA035: PLC1: Error has been responded for device write command (Error Code: 2[02H])"

**NOTE**

- Refer to your External Device manual for details on received error codes.
- Refer to "Display-related errors" in "Maintenance/Troubleshooting guide" for details on the error messages common to the driver.

### ■ Error Codes Unique to External Device

Error Code (HEX)	Error Description
E0	Accessed the device not defined as device in the External Device.*1
E1	A command which is not supported by the CPU unit was sent.
E4	Wrote in the write disable device.

\*1 When you write to Timer (Contact/Current Value/Setting Value), Counter (Contact/Current Value/Setting Value), High-speed Counter and High-speed Counter Comparator (Setting Value), the changed settings must be made in the ladder program in advance.

## ■ Error Messages Unique to External Device

Message ID	Error Message	Description
RHxx128	(Node Name): ID=(Adapter ID) is not registered in the List	When the ID number of the GP3000H Conversion Adaptor is not registered in the list, this message is displayed when turning on the Display's power on. Register the GP3000H Conversion Adaptor ID number.
RHxx129	(Node Name): Conversion Adapter is not connected, or the setting for Conversion Adapter is set Disable. Please confirm the connection or the setting.	When the GP3000H Conversion Adapter is not connected or a check is not put in the [Disable] box of the [Conversion Adapter], this message is displayed after putting a check in the "List Register". Check the connection or setting of the GP3000H Conversion Adaptor.