

## **Windows XP Embedded Reference Manual**

CF card capacity : 2GB  
File system : NTFS

Supported language : Multi-language version

## Preface

Thank you for purchasing Pro-face's Windows XP Embedded (Hereafter referred to as the "XPE").

Before using the XPE, be sure to read this manual thoroughly to familiarize yourself with the XPE's operation procedures and functions.

The XPE is the component version of the Windows XP operating system. Because some of the connection devices and the applications are not compatible with Windows XP, check if the device or application is compatible when operating it.

## Supported Model List

Series	Unit model	Unit revision	Supported CF card model	Volume label
PS-3000B	PS3000B-BA	No Rev. or later	PS345XA-XPE2G-BLD	345XAXPE2M1 or later
PS-3001B	PS3001B-BD			
PS-3450A	PS3450A-T41 PS3450A-T41-24V			
PS-3451A	PS3451A-T41-24V			
PS-3650A-T41	PS365*A-T41	Rev. E or later	PS365XA-XPE2G-BLD	365XAXPE2M1 or later
PS-3651A-T41	PS365*A-T41-24V	No Rev. or later		
PS-3650A-T42 PS-3651A-T42	PS365*A-T42	No Rev. or later	PS365XA-XPE2G-02-BLD	365X2XPE2M1 or later
	PS365*A-T42S			
	PS365*A-T42-24V			
	PS365*A-T42S-24V			
PS-3710A	PS3710A-T41	No Rev. or later	PS3710A-XPE2G-BLD	3710AXPE2M1 or later
	PS3710A-T41-24V			
PS-3711A	PS3711A-T41	No Rev. or later	PS3711A-XPE2G-BLD	3711AXPE2M1 or later
	PS3711A-T41-24V			
PL3000 (Core Duo)	APL3000-***-CD2G-***	No Rev. or later	APL3000-XPE2G-CD-BLD	PL3KCDXPEM2 or later
PL3000 (Celeron M)	APL3000-***-CM18-***	No Rev. or later	APL3000-XPE2G-CM-BLD	PL3KCMXPEM2 or later

- \* The last digit of the volume label indicates a version number which corresponds to the software revision.
- \* The newest manual, Driver and Utility can be downloaded from the Digital Electronics Corporation's homepage. Also often questions and helpful informations are uploaded as Q&A to Digital Electronics Corporation's homepage. Please refer them to the purpose of usage. <http://www.pro-face.com/otasuke/>

### NOTE

1. It is forbidden to copy the contents of this manual in whole, or in part, without the permission of the Digital Electronics Corporation.
2. The information in this manual is subject to change without notice.
3. This manual was written with care; however, if you should find any error or omissions, please contact Digital Electronics Corporation and inform them of your findings.
4. Regardless of the above clause, Digital Electronics Corporation shall not be held responsible for any damages or third-party claims for damages or losses resulting from the use of this product.

© Copyright 2007 Digital Electronics Corporation. All rights reserved.

Windows is a registered trademark of Microsoft Corporation.

All other trademarks and registered trademarks are property of their respective owners.

## TRADEMARK RIGHTS

The company names and product names used in this manual are the trade names, trademarks (including registered trademarks), and service marks of their respective companies. This product omits individual descriptions of each of these rights.

Trademark / Tradename	Right Holder
Microsoft, Windows	Microsoft, U.S.
Pro-face	Digital Electronics Corporation (in Japan and other countries)
Adobe	Adobe Systems Incorporated

The following terms differ from the abovementioned trade names and trademarks.

Term used in this manual	Formal Trademark or Tradename
Windows XP	Microsoft <sup>®</sup> Windows <sup>®</sup> XP operating system
Windows XP Embedded	Microsoft <sup>®</sup> Windows <sup>®</sup> XP Embedded operating system
Adobe Reader	Adobe <sup>®</sup> Reader <sup>®</sup>

## How to use this manual




This manual makes special mention of XPE's feature and setup method.

For the hardware-related instructions for use, setup methods, and so on, refer to the Instruction guide, which is contained in this package or IPC (Industrial Personal Computer) Series Hardware Manual.

For the software-related instructions, setup method of software, and so on, refer to the IPC (Industrial Personal Computer) Series Reference Manual.

## Information Symbols

This manual uses the following icons:

	Indicates a warning or a product limitation. Be sure to follow the instructions given with this icon to insure the safe operation of the XPE.
	Contains additional or useful information.
*	Indicates terms or items that require further explanation. See the footnote on that page.
(1) (2)	Indicates steps used to accomplish a given task. Be sure to follow these steps in the order they are written.
XPE	Refers collectively to the Windows XP Embedded.
	Indicates pages containing related information.

## Package Contents

The following items exclusively for XPE are included in the package. Before using the XPE, please confirm that all items listed here are present.

### End User License Agreement (EULA)(1)



---

**NOTE**

- This unit has been carefully packed, with special attention to quality. However, should you find anything damaged or missing, please contact your local XPE distributor immediately.
  - The newest manual, Driver and Utility can be downloaded from the Digital Electronics Corporation's homepage.  
<http://www.pro-face.com/otasuke/>
-

# Table of Contents

Preface .....	1
Supported Model List .....	1
TRADEMARK RIGHTS .....	2
How to use this manual .....	3
Information Symbols.....	3
Package Contents .....	4
Table of Contents .....	5

## Chapter 1 Windows XP Embedded

1 Feature .....	1-2
2 List of primary application programs .....	1-4
3 Function List of Control Panel in the XPE .....	1-5
4 Setting the Write Filter (Write Protection).....	1-6
4.1 Write Filter Settings Procedure .....	1-7
4.2 Access operation to the CF card of the Write filter .....	1-8
5 Copy the same setting environment to multiple panel computers (Copying the CF card) .....	1-10
5.1 Copying the CF card procedure (when not changing the language of the OS) ...	1-10
5.2 Copying the CF card procedure (when changing the language of the OS) .....	1-11
6 Solve the memory leak caused by the Write filter .....	1-13
6.1 RAM Disk Settings Procedure .....	1-13
7 Changing the OS language/keyboard layout.....	1-16
7.1 Changing the OS language/keyboard layout procedure (LangShell.exe).....	1-16
7.2 Language selection.....	1-21
8 Reducing time from boot up to operation .....	1-22
8.1 HORM settings procedure .....	1-23
8.2 Canceling HORM procedure.....	1-25
9 Displaying keyboard on the screen .....	1-26
9.1 Changing input font size procedure .....	1-26
10 Using Touch Panel Operations .....	1-28
10.1 Connect the FP Series and unit by serial connection .....	1-28
10.2 Enabling/disabling the Touch Panel Operations procedure.....	1-29
11 Notes on creating user accounts.....	1-30
12 Notes on turning off the power .....	1-32
13 Backup/Recovery of the CF Card.....	1-33
14 Restrictions.....	1-34

## Chapter 2 Troubleshooting

1 Problems and countermeasures .....	2-2
--------------------------------------	-----

## Chapter Appendices

1 [IN-fINITY soft KeyClick32] Agreement.....	A-2
2 [DMC Corporation Mouse Emulation Software] SLA .....	A-3

# 1

# Windows XP Embedded

1	Feature.....	1-2
2	List of primary application programs .....	1-4
3	Function List of Control Panel in the XPE .....	1-5
4	Setting the Write Filter (Write Protection).....	1-6
5	Copy the same setting environment to multiple panel computers (Copying the CF card) ..	1-10
6	Solve the memory leak caused by the Write filter .....	1-13
7	Changing the OS language/keyboard layout .....	1-16
8	Reducing time from boot up to operation.....	1-22
9	Displaying keyboard on the screen .....	1-26
10	Using Touch Panel Operations .....	1-28
11	Notes on creating user accounts .....	1-30
12	Notes on turning off the power .....	1-32
13	Backup/Recovery of the CF Card .....	1-33
14	Restrictions .....	1-34



# 1 Feature

The XPE is the component version of the Windows XP operating system and is the operating system which has the discriminative function about an embedded device such as the Write Filter.

**IMPORTANT**

- The CF card must be connected to the primary master (Disk 0).
- Data cannot be recovered without backup data. Back up the data with the factory settings or after installing the required application programs.

☞ “13 Backup/Recovery of the CF Card” (Page 1-33)

**NOTE**

- The newest manual, Driver and Utility can be downloaded from the Digital Electronics Corporation's homepage.  
<http://www.pro-face.com/otasuke/>

The XPE made by Pro-face has the following features.

## ■ Write Filter Function(The function to protect the CF card from writing)

This function protects the CF card from writing. Be sure the Write Filter is enabled to decrease the number of times of write to CF card. When enabling the function, you can shut down the XPE without executing the shutdown operation.

☞ “4 Setting the Write Filter (Write Protection)” (Page 1-6)

## ■ Supporting Multi-language Function

XPE supports English (Default setting), Japanese, Spanish, French, German, and Italian.

You can select your desired language when starting the OS.

☞ “7 Changing the OS language/keyboard layout” (Page 1-16)

**NOTE**

- There are more other languages which are able to install additionally.  
For these supported languages, language installers are available at Pro-face's support site “Otasuke Pro!” Use these installers to install your necessary language.  
<http://www.pro-face.com/otasuke/>

## ■ Using with an HDD

Using an HDD with the CF card increases data capacity and enables the use of large software applications.

**NOTE**

- Connected HDD has no Write Filter function.

## ■ Installed System Monitor

It enables Error Monitor of the system.

For details, refer to IPC Series Reference Manual.

## ■ Supporting Touch Panel Driver (UPDD)

The input operation like a mouse is possible with the touch operation.

☞ “10 Using Touch Panel Operations” (Page 1-28)

## ■ Installed KeyClick

It displays the keyboard on a screen and enables the key input from the touch panel.

☞ “9 Displaying keyboard on the screen” (Page 1-26)

## ■ Hibernation Function

This function stores the operating state just before the XPE is shut down. This allows you to start to operate the XPE with the same state at the next start-up. The start-up time is reduced by putting the XPE system into hibernation.

☞ “8 Reducing time from boot up to operation” (Page 1-22)

## ■ RAM Disk

Use the RAM Disk to solve the memory leak caused by the Write filter.

RAM Disk will enable to write the data directly into the memory area.

Therefore, the area of the RAM Disk can be used again and again whether the Write filter is enabled or not.

☞ “6 Solve the memory leak caused by the Write filter” (Page 1-13)

## 2 List of primary application programs

The main installed applications before shipment are shown in the table below.

Applications	Details
Internet Explorer 6	Web Browser (Microsoft.Corp.)
Japanese IME	Conversion software for Japanese input.
Control Panel	Customize an IPC Series. Add new hardwares, add / remove programs, change the screen display and start various operations. The System Monitor's settings screen can also be displayed.
Accessory	Microsoft's Notepad, Paint, On-Screen Keyboard, Command Prompt, and Hyper Terminal are installed.
Keyclick	Displays the keyboard on a screen and operates the key input. Supports Japanese and English only.
UPDD	Operates the touch panel.
EFW Setting Tool *1	Sets the Write Filter function.
Lang Shell *1	Sets the OS language and keyboard layout.
System Monitor	Monitors errors of the system.

\*1 Changing the setting requires the administrator's authority.

### NOTE

- Often questions and helpful informations are uploaded as Q&A to Digital Electronics Corporation's homepage. Please refer them to the purpose of usage.

<http://www.pro-face.com/otasuke/>

### 3 Function List of Control Panel in the XPE

The function and the setting of the Control Panel in the XPE are as below.

Icons	Details	Complement (useful range etc.)
Internet Option	Configure your Internet display and connection settings.	In the factory setting, cache size is set to 1MB and the history preservation day is set to zero and the cache file storage folder is changed to Z:\(RAM Disk).
Folder option	Customize the display of files and folders, change file associations, and make network files available offline.	The offline use of network files is disabled in the factory setting.
Printer and FAX	Shows installed printers and helps you add new ones.	FAX is not compatible.
Add/Remove programs	Install or remove programs and Windows components.	Add / Remove Windows component and Windows Update cannot be used.
Internet Information Service	Manages Internet Information Service, the web server for Internet and intranet web sites.	The Internet Information Service is disabled in the factory setting.

#### NOTE

- Before changing settings, disable the Write Filter. When the Write Filter is enabled, the change is not saved.  
Enabling the Write Filter after changing the setting is recommended.
- ☞ “4.1 Write Filter Settings Procedure” (Page 1-7)


## 4 Setting the Write Filter (Write Protection)

This unit has the Write Filter (the function that protects the CF card from writing).

By setting the function to Enabled, the card is protected from writing. This protection prevents that the card is damaged and its lifetime is reduced with the number of writings increased.

**IMPORTANT**

- When data is written in the devices (except CF card) that are not protected by the Write Filter, turning off the power may cause damage of the data.

 "12 Notes on turning off the power" (Page 1-32)

- When making settings, adding a driver, or changing registries, be sure to disable the Write Filter. If the Write Filter is enabled, the settings regarding the OS will be all canceled when OS restarts. When changing the setting, be sure to disable the Write Filter setting.

Enabling the Write Filter after changing the setting is recommended.

## 4.1 Write Filter Settings Procedure

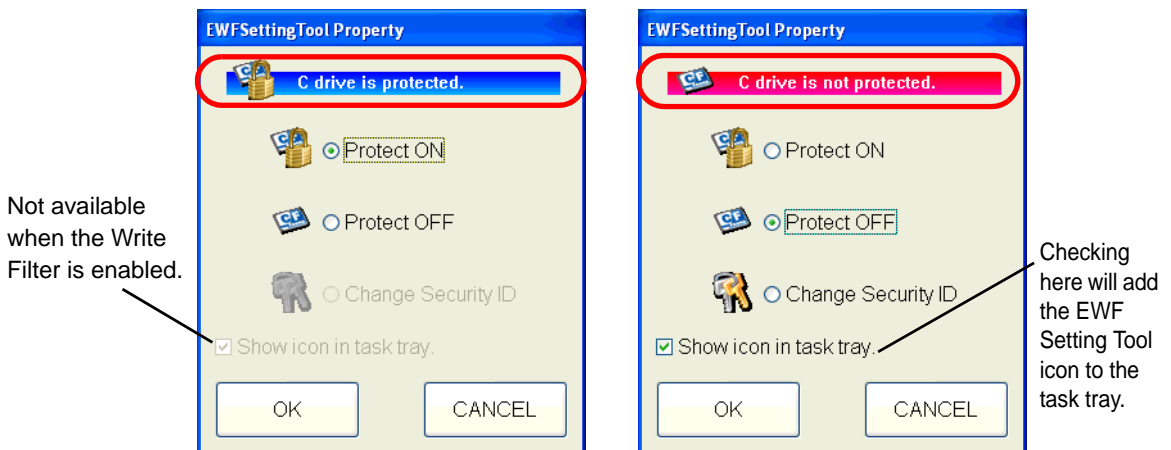
When setting the Write Filter, use “EFW Setting Tool”. This tool has the following function. In the factory settings, the Write Filter function is disabled.

- The Write Filter is enabled (Protect ON).
- The Write Filter is disabled (Protect OFF).
- Change of security ID.

### IMPORTANT

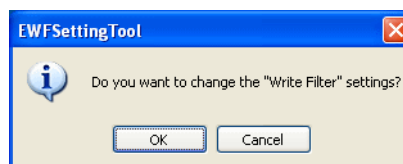
- Changing the setting of the Write Filter requires the administrator’s authority.

- (1) Select [Designate file name and run] from the [Start] menu and start the following executable file.  
C:\Proface\EWFSettingTool\EWFSettingTool.exe
- (2) Confirm current setting on the display screen.



- (3) Choose the setting.
- (4) Clicking [OK] displays the dialogbox “Do you want to change the Write Filter settings?” to confirm the setting change. Click [OK] to enable the setting. On changing the settings, the XPE is restarted automatically.

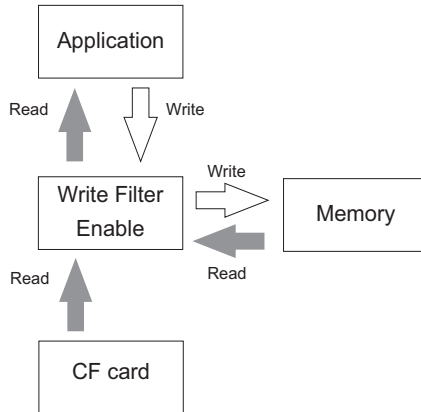
\* Restart and the contents of change becomes effective.



## 4.2 Access operation to the CF card of the Write filter

### ■ When the Write Filter is enabled

- Read: Direct access to CF card
- Write: Access to the memory



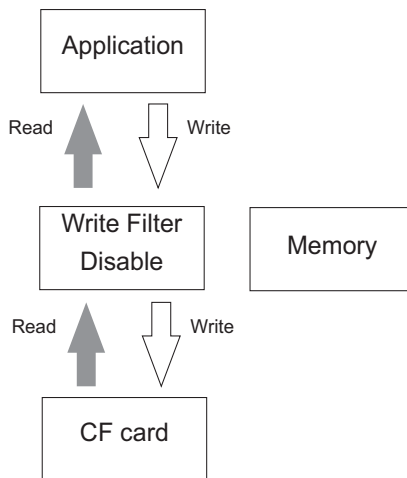
**NOTE**

- When the added or changed data is on the memory, the data on the memory precedes. It is recommended to enable the Write Filter again after changing data.
- The memory leak will be caused, when accessing to the Write Filter enabled CF card. To solve the memory leak caused by the Write filter, refer to the following below.

☞ “6 Solve the memory leak caused by the Write filter” (Page 1-13)

### ■ When the Write Filter is disabled

- Read: Direct access to CF card
- Write: Direct access to CF card



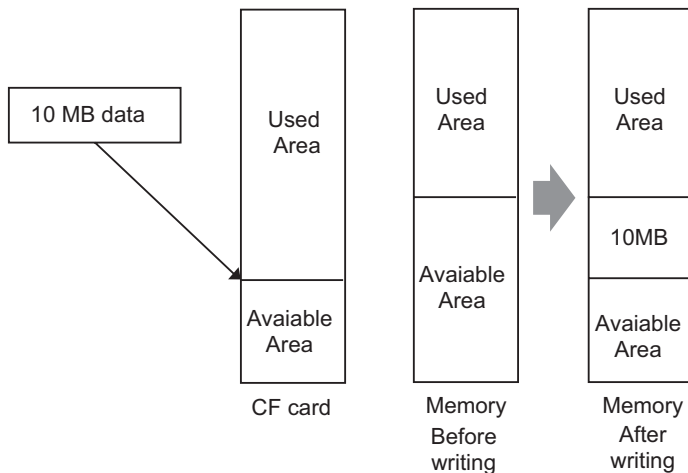
**NOTE**

- Turning off the power when writing into a CF card may result in damaged or lost data. The Write Filter must be enabled.

## ■ Write Filter-related important notes

- If the Write Filter is enabled, when writing to the CF card, data is written on the memory. When deleting the data on the memory, some data may remain. However, it will be deleted after rebooting.
- Even if the CF card has an available area, when the memory has no available area, writing data causes the disk's insufficient available area error. And when the memory has a available area and the CF card has no available area, the Writing Error occurs and data cannot be written. When writing data, be sure to check available areas of the CF card and the memory.

Ex.) With the Write Filter enabled, when writing 10-MB data,



<Conditions to write 10-MB data>

- The appearing available area in the CF card is 10 MB or more
- The memory's available area: 10MB + memory's available area necessary for OS to operate properly.

<State after 10-MB data is written>

- The appearing available area in the CF card decreases by 10 MB.
- The available area in the memory decreases by 10 MB.

<State after 10-MB data is deleted>

- The appearing available area in the CF card returns to the state before 10-MB data is written.
- The available area in the memory does not change from the state when data is written.

- Writing large amounts of data will decrease the available memory. Therefore, during operation, it's necessary to refrain from writing into the CF card as much as possible.

In order to solve this problem, RAM Disk is installed in XPE made by Pro-face.

In the RAM Disk, the area for the specified size can be used as a volatile disk area. Therefore, that area can be used again and again when writing directly into the memory area whether the Write Filter is enabled or not.

For details and settings of the RAM Disk, refer to the following section.

☞ "6 Solve the memory leak caused by the Write filter" (Page 1-13)



## 5 Copy the same setting environment to multiple panel computers (Copying the CF card)

When copying the same setting environment of the CF card to multiple panel computers , use the following procedure to copy the CF card.

**NOTE**

- By not copying the CF card through the following procedure, a CF card with the same security ID will be created. A security ID is a unique ID assigned to each panel computer. Computers that have the same security ID will be recognized as the same computer on the Microsoft Network.

### 5.1 Copying the CF card procedure (when not changing the language of the OS)

- (1) Disable the Write Filter.

When the Write Filter is enable, the security ID cannot be changed.

☞ “4.1 Write Filter Settings Procedure” (Page 1-7)

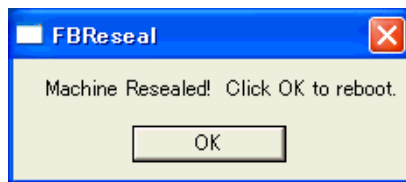
- (2) Start “EWFSettingTool. exe” and select “Change Security ID” and click [OK].  
(Executable file is “C:\Proface\EWFSettingTool\EWFSettingTool.exe”.)

**IMPORTANT**

- Changing the setting requires the administrator's authority.



- (3) The following dialog box will appear.



- (4) Click [OK] and the unit is rebooted automatically.

- (5) BIOS is displayed. While BIOS is displayed, press [F2]key.

Turn off the power supply after BIOS setup screen is displayed and copy the CF card.

- (6) Reboot by using the CF card which you have copied. The security ID will be changed during the first reboot.

**IMPORTANT**

- It may take a long time to boot but since changing the security ID, do not turn off the power supply.

- (7) After the security ID is changed, the XPE is restarted automatically.

**NOTE**

- After restart, Write Filter becomes enable and it is not necessary to set it again.
- When you change the security ID, the MACHINE\_NAME would be changed and therefore the Event Error occurs.

There are no affects for this error.

## 5.2 Copying the CF card procedure (when changing the language of the OS)

- (1) Disable the Write Filter.

When the Write Filter is enable, the security ID cannot be changed.



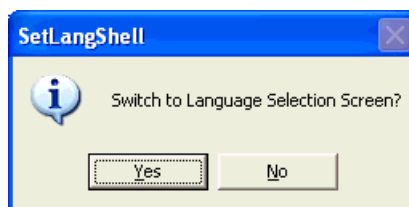
“4.1 Write Filter Settings Procedure” (Page 1-7)

- (2) Start up “Set Lang Shell.exe”. Click [Yes] at the following dialog box.

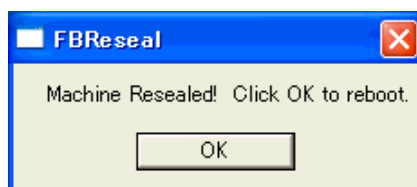
(Executable file is “C:\Pro-face\LangShell\Set Lang Shell.exe”.)

**IMPORTANT**

- Changing the setting requires the administrator's authority.



- (3) The following dialog box will appear.



- (4) Click [OK] and the unit is rebooted automatically.
- (5) BIOS is displayed. While BIOS is displayed, press [F2]key.  
Turn off the power supply after BIOS setup screen is displayed and copy the CF card.
- (6) Reboot by using the CF card which you have copied. The security ID will be changed during the first reboot.

**IMPORTANT**

- It may take a long time to boot but since changing the security ID, do not turn off the power supply.

**NOTE**

- After restart, Write Filter becomes enable and it is not necessary to set it again.
- When you change the security ID, the MACHINE\_NAME would be changed and therefore the Event Error occurs.

There are no affects for this error.

- (7) Change the language of the OS continuously.

To change the language of the OS, refer to the following below.

-  “7 Changing the OS language/keyboard layout” (Page 1-16)

## 6 Solve the memory leak caused by the Write filter

Use the RAM Disk to solve the memory leak caused by the Write filter.

RAM Disk will enable to write the data directly into the memory area.

Therefore, the area of the RAM Disk can be used again and again whether the Write filter is enabled or not.

Refer to the following below for the memory leak caused by the Write filter.

☞ “4.2 Access operation to the CF card of the Write filter” (Page 1-8)

If the RAM Disk is used as a data storage area such as for Internet Explorer’s cache, it is possible to get the system to operate without changing the available memory volume for a long time.

Logging data such as users’ applications is one of the data types that can use the RAM Disk effectively.

<In the factory settings>

Drive Letter: Z

Size: 4MB

### NOTE

- Do not change the Drive Letter setting.
- Data can be written in the RAM Disk whether the Write Filter is enabled or not. However, this data will be lost when the power is turned off.
- Even using the RAM Disk, the memory leak will not be solved completely.

### 6.1 RAM Disk Settings Procedure

Follow the following procedure to change the RAM disk area.

### NOTE

- Before setting the Ram Disk, disable the Write Filter. When the Write Filter is enabled, the change is not stored.

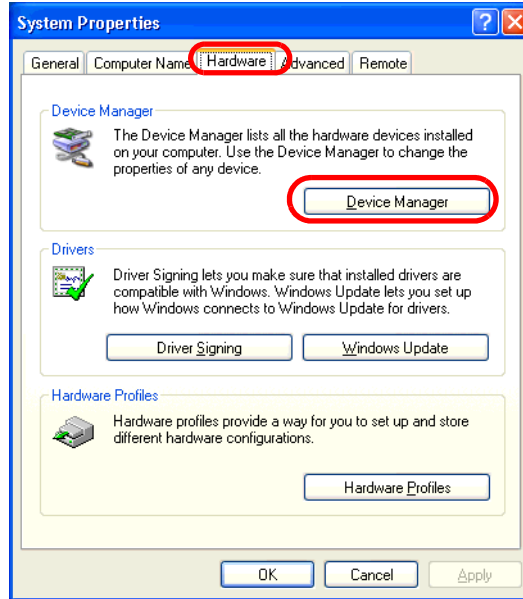
Enabling the Write Filter after changing the setting is recommended.

☞ “4.1 Write Filter Settings Procedure” (Page 1-7)

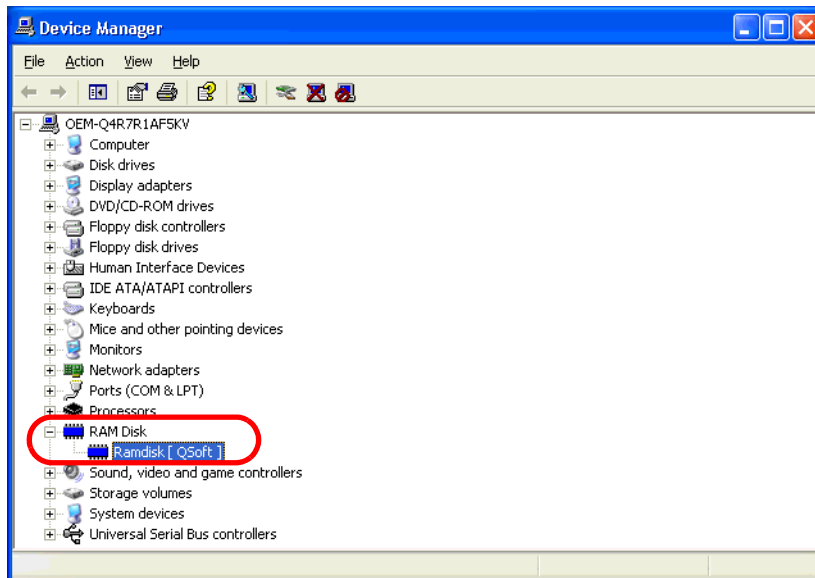
- (1) Open [System] by clicking the [Control Panel] and then the [Performance and Maintenance].



- (2) Select the [Hardware] tab and then [Device Manager].



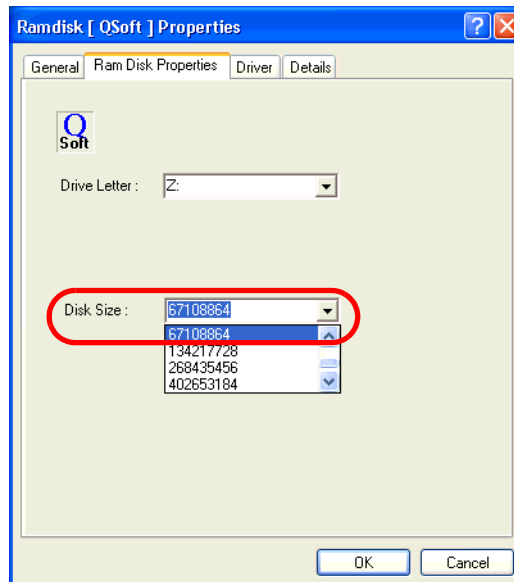
- (3) The following dialog box will appear. Click the “+” mark on the left from the [RAM Disk] and double-click [Ram disk[QSoft]].



- (4) The following dialog box will appear. Select the [Ram Disk Properties] tab.



- (5) Set a RAM Disk area in [Disk Size].



**IMPORTANT**

- The maximum value of the RAM Disk area is 67108864. When the value over the maximum value is set, an error occurs.

**NOTE**

- Do not change the Drive Letter setting.

- (6) Restart the unit.

## 7 Changing the OS language/keyboard layout

You can select one of six languages for the XPE OS: English (factory setting), Japanese, Spanish, French, German, and Italian. You can also set a keyboard layout to input other languages with the keyboard. Select a keyboard layout as necessary.

### 7.1 Changing the OS language/keyboard layout procedure (LangShell.exe)

**IMPORTANT**

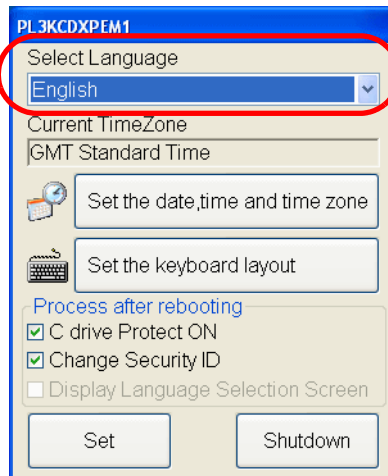
- Changing the setting of the OS language and keyboard layout requires the administrator's authority.

- (1) Disable the Write Filter.

When the Write Filter is enable, the security ID cannot be changed.

☞ “4.1 Write Filter Settings Procedure” (Page 1-7)

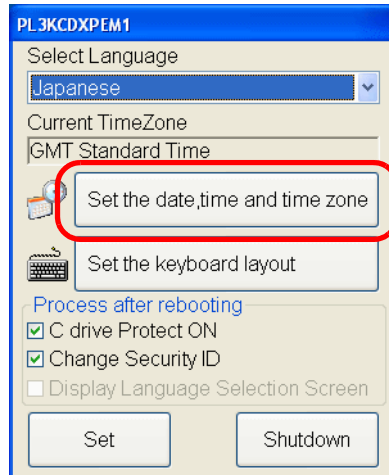
- (2) The language selection screen is displayed. Select a language you wish to use from the [Select Language] pull-down menu.


**NOTE**

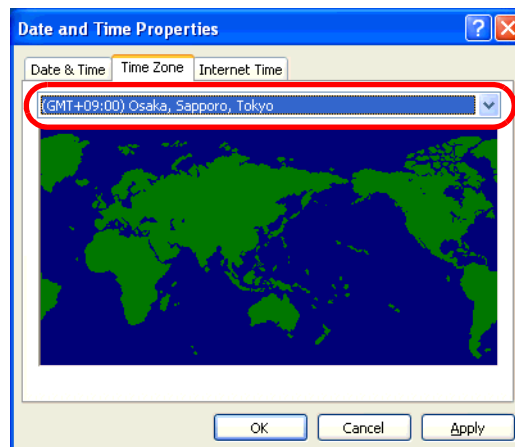
- When you boot the XPE for the first time, the language selection screen is displayed automatically. To select a language at a future time, open the [Designate file name and run] dialog box from the [Start] menu and start up the following executable file.

C:\Proface\LangShell\LangShell.exe

- (3) Click [Set the date, time and time zone] to display the [Date and Time Properties] dialog box.

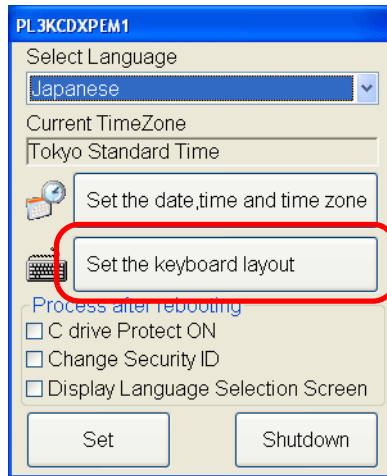


- (4) On [Date and Time Properties] dialog box, click the [Time Zone] tab, select the region for the desired time zone, and click [OK].

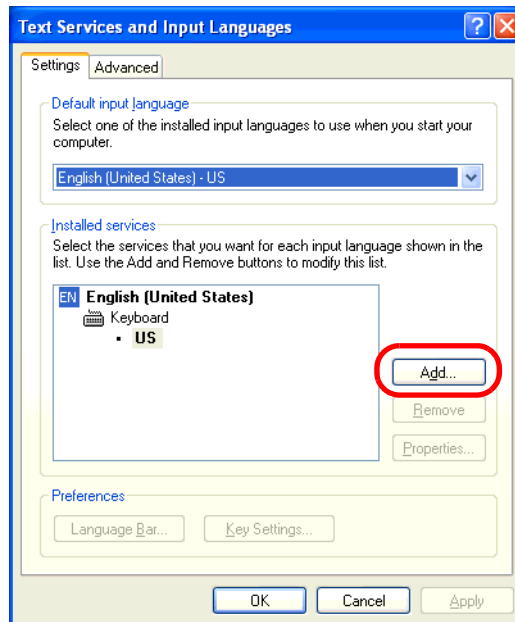




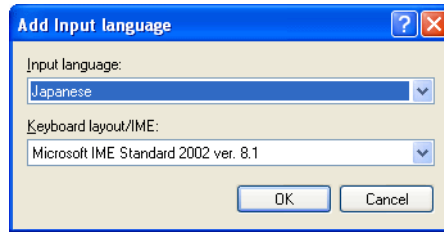
- (5) To change the keyboard layout, select [Set the keyboard layout].



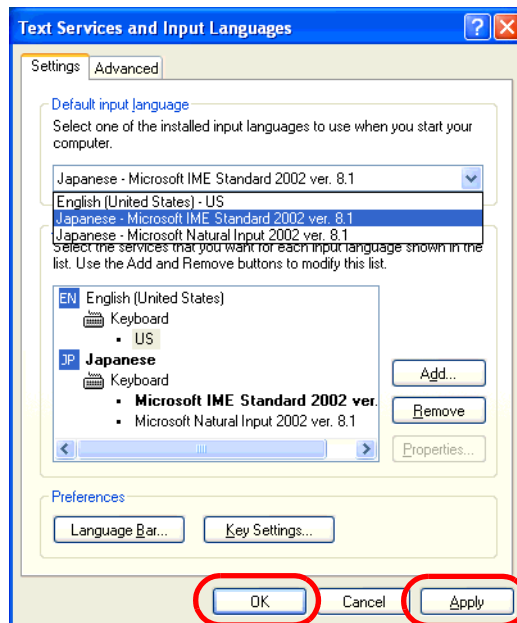
- (6) The [Text Services and Input Languages] dialog box will appear. Under [Installed services], select [Add].



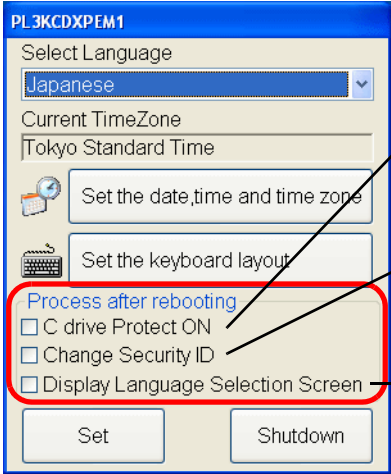
- (7) The [Add Input language] dialog box will appear. Select the language to input in [Input language], and select the keyboard layout of the keyboard to be used in [Keyboard layout/IME]. Click [OK].



- (8) The [Text Services and Input Languages] dialog box will appear again. Select the language you selected in the previous step from [Default input language], click [Apply], and then click [OK].



- (9) If needed, set the [Process after rebooting] configuration.



The screenshot shows a dialog box titled "PL3KCDXPEM1" with a blue header. The main area is titled "Process after rebooting" and contains three unchecked checkboxes: "C drive Protect ON", "Change Security ID", and "Display Language Selection Screen". The "Process after rebooting" title and the three checkboxes are enclosed in a red rectangular box. To the right of the dialog box, three lines of text with arrows point to the checkboxes, providing instructions on their functions.

When this check box is checked, the Write Filter becomes enabled at the next start-up.

When this check box is checked, the security ID can be changed at the next start-up.

When this check box is checked, the language selection screen will be displayed at the next start-up.

- (10) Click [Set] to save the settings and reboot the OS. Click [Shutdown] to shutdown the OS without saving changes.

## 7.2 Language selection

There are two tool files to select the OS language/keyboard layout: “LangShell.exe” (only for changing the OS language/keyboard layout) and “SetLangShell.exe” (for changing the OS language/keyboard layout and obtaining a security ID). Use them selectively depending on your purpose.

For obtaining the security ID, refer to the section below.

☞ “5 Copy the same setting environment to multiple panel computers (Copying the CF card)” (Page 1-10)

**NOTE**

- When you want to change the OS language/keyboard layout at the time of copying the CF card in addition to obtaining an individual security ID, start up “Set Lang Shell.exe” in the “C:\Pro-face\LangShell” file. The setting procedure after the language selection screen is displayed is the same as that in the case of using “LangShell.exe”.
- Although you can change the keyboard layout for the KeyPad Module (KPM) provided for some of the PL-3\*00K series, the KPM is designed to operate properly with the US keyboard layout. Therefore, some keyboard labels do not correspond with key codes when the language which is not supported with the US keyboard layout is used.

For details of KPM, refer to the following section.

☞ PL3000 Series Reference Manual “4 Using Key Commands to Input Text and Operate Applications”

- For these supported languages, language installers are available at Pro-face’s support site “Otasuke Pro!” Use these installers to install your necessary language.

<http://www.pro-face.com/otasuke/>

## 8 Reducing time from boot up to operation

When using the hibernation function to store the operating state just before the XPE is shut down, you can start to operate the XPE with the same state at the next start-up (at the resumption of the XPE from its hibernation). By putting the XPE system into hibernation, the amount of time and work is reduced compared to that in the case of shutting down and starting up the OS and/or the applications.

In addition, when enabling the Write Filter and using the XPE-specific function (HORM: Hibernate Once/Resume Many) which resumes the XPE from its hibernation every time, you can enable/disable the XPE without changing the operating state of the system.

For the Write Filter, refer to the section below.

☞ “4 Setting the Write Filter (Write Protection)” (Page 1-6)

The XPE operation when using HORM

The Write Filter is enabled: the XPE is resumed from its hibernation every time.

The Write Filter is disabled: the XPE is resumed from its hibernation only once.

**IMPORTANT**

- When using HORM, do not use devices other than the CF card.
- Neither backup nor recover the CF card, which sets hibernation or HORM. OS will not start normally.
- To use HORM, the free space required on the CF card is the same as the memory space used in the unit. Since the initial free space of the CF card is 1.5 GB, you cannot use HORM if the memory space used in the unit is more than 1.5 GB.

**NOTE**

- By using the Key Click, the hibernation function can be set up without a keyboard. However, to change or cancel the HORM setting, a keyboard is needed.

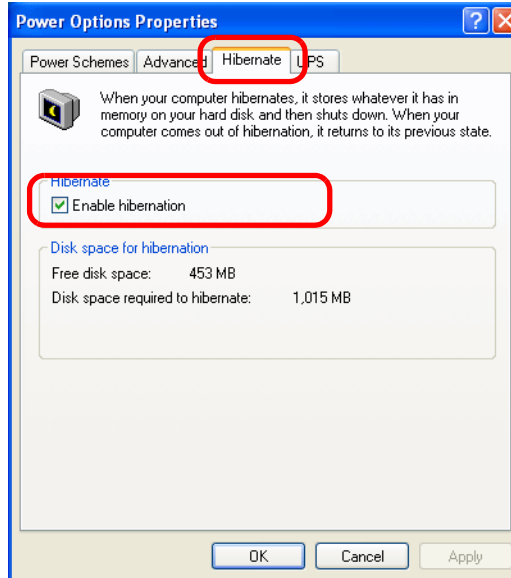
For details and how to set the Key Click, refer to the following section.

☞ “9 Displaying keyboard on the screen” (Page 1-26)

- HORM is started only when the Write Filter is enabled.

## 8.1 HORM settings procedure

- (1) Install the required application programs.
- (2) Open the [Power Options] dialog box by clicking in order of the [Start] button, the [Control Panel] and the [Power Options]. And then, select the [Hibernate] tab on the dialog box and check the [Enable hibernation] check box.



- (3) Set the Write Filter to Enabled. For details and how to set the Write Filter, refer to the following section.  
☞ "4.1 Write Filter Settings Procedure" (Page 1-7)
- (4) On enabling the Write Filter function, the XPE is restarted automatically.
- (5) Just before the next time you shut down the XPE, display the [Shut Down Windows] dialog box by clicking the [Start] menu and then [Shut Down].

- (6) Press the [Shift] key to change the [Stand By] button into the [Hibernate]. Click the [Hibernate] button after the change.

**IMPORTANT**

- Do not turn off the power while the message “Hibernating...” is displayed.



**NOTE**

- When using the Key Click, by sliding your finger out of the keypad frame with keeping the Shift key touched, you can maintain the condition that the Shift key is selected.

- (7) When powered on at the next start-up, the XPE is started in the state before going into hibernation.

**NOTE**

- While HORM is operated, the Write Filter function cannot be canceled. This makes it impossible to add the drivers and/or applications and to upgrade the version of the XPE. To make them possible, cancel HORM.

## 8.2 Canceling HORM procedure

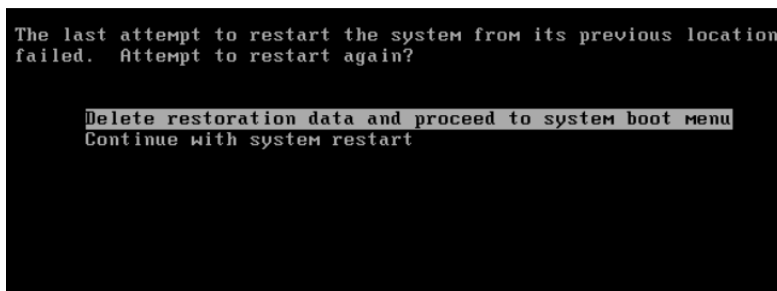
- (1) Start the XPE from its hibernation.
- (2) While the following screen is displayed, press F8 key.



- (3) Select the “Delete restoration data and proceed to system boot menu”.

### NOTE

- When you select “Continue with system restart”, the XPE is started with the HORM. The hibernation is not canceled.
- An external keyboard is needed to select “Delete restoration data and proceed to system boot menu”.



- (4) The hibernation is canceled and the XPE is started in normal mode.
- (5) Disabled the Write Filter function and then add the drivers and/or applications.
- (6) After completing the setting of the Write Filter function, enable the Write Filter function.



## 9 Displaying keyboard on the screen

The KeyClick32 software keyboard made by IN-FINITY soft can be used. Please surely read the License agreement on the appendix before using it.

☞ “1 [IN-FINITY soft KeyClick32] Agreement” (Page A-2)

When changing font size, set the setting referring the following diagram.

**NOTE**

- Only Japanese and English are supported.  
When operating the key input from the touch panel in the language except the above mentioned, use Microsoft’s Screen Keyboard.
- It cannot be used for password input when starting this unit.
- It cannot be used for command prompt.

### 9.1 Changing input font size procedure

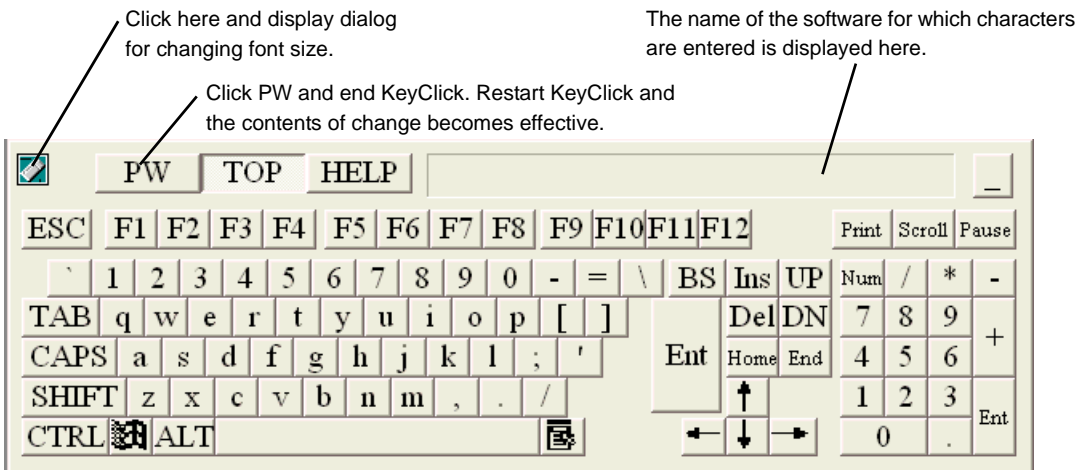
**NOTE**

- Before setting KeyClick, disable the Write Filter. When the Write Filter is enabled, the change is not saved.  
Enabling the Write Filter after changing the setting is recommended.
- ☞ “4.1 Write Filter Settings Procedure” (Page 1-7)

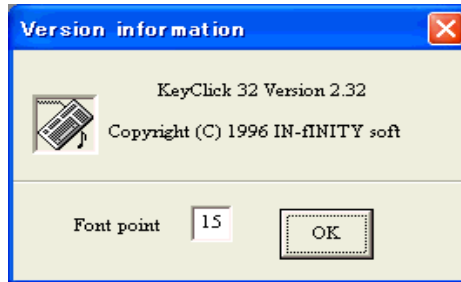
- (1) When using Japanese/English version, start with [Start]->[All program]->[KeyClick\_J] (Japanese version) or [KeyClick\_E] (English version) (Executable file is C:\Proface\KeyClick\_J\KeyClick.exe or C:\Proface\KeyClick\_E\KeyClick.exe)
- (2) When changing font size, set the setting referring the following diagram.

**IMPORTANT**

- Changing the settings of the KeyClick requires the power user’s or higher authority.



Dialog box for changing font size



## 10 Using Touch Panel Operations

The touch panel driver by DMC Co., Ltd can be used to enable mouse emulation. Before using, be sure to read the license arrangement on the appendix.

☞ “2 [DMC Corporation Mouse Emulation Software] SLA” (Page A-3)

**NOTE**

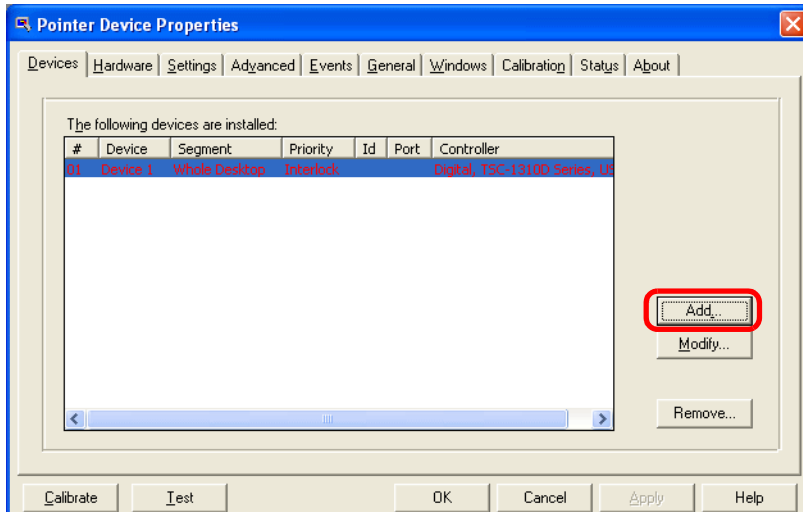
- You can open “Touch Panel Property” by selecting the [Start] -> [Programs] -> [UPDD] -> [Settings]. In this dialog box, you can specify the details of the touch panel operation.
- If the touch position recognized in the panel deviates from the actual touch, you need to calibrate the touch panel. Select the [Start] -> [Programs] -> [UPDD] -> [Calibration]. When a cross appears on the screen, press it. Then click [OK] in the [Confirmation after calibration] dialog box to finish the calibration.
- When you use a unit of the PL3000 series, connection of Pro-face’s FP to the monitor enables the touch panel operations.

### 10.1 Connect the FP Series and unit by serial connection

It is necessary to install the UPDD Serial driver when using the IPC unit with a serial connection.

Install the additional driver by following the procedure below.

- (1) From the [Start] menu, click [Programs], [UPDD], and then [Settings].
- (2) Click [Add].



- (3) Select [Digital TSC-1310D Series, Serial], and click [Next].

Follow the on-screen instructions to install the driver.



## 10.2 Enabling/disabling the Touch Panel Operations procedure

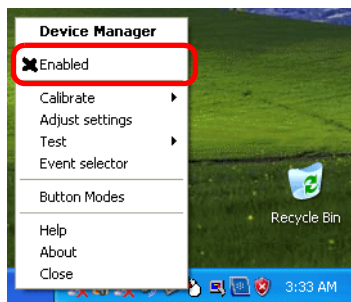
The UPDD device driver has a driver to connect to USB devices built in by default.

When you use a unit of the BOX-Type PL3000 series, the UPDD settings are disabled by default. When connecting the unit to the FP Series, these setting should be enabled.

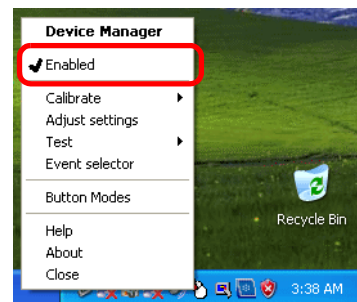
- (1) Click the icon enclosed with the red frame.



- (2) Click the check mark of [Enabled] to change “✘” to “✔”.



UPDD [USB Connection] settings disabled



UPDD [USB Connection] settings enabled

## 11 Notes on creating user accounts

Be sure to set the Control Panel before creating user accounts. Otherwise, the OS language displayed after the login with a new user account may be different from the OS language used for the account creation.

To set the Control Panel, refer to the following below.

☞ “■ Control Panel settings procedure” (Page 1-30)

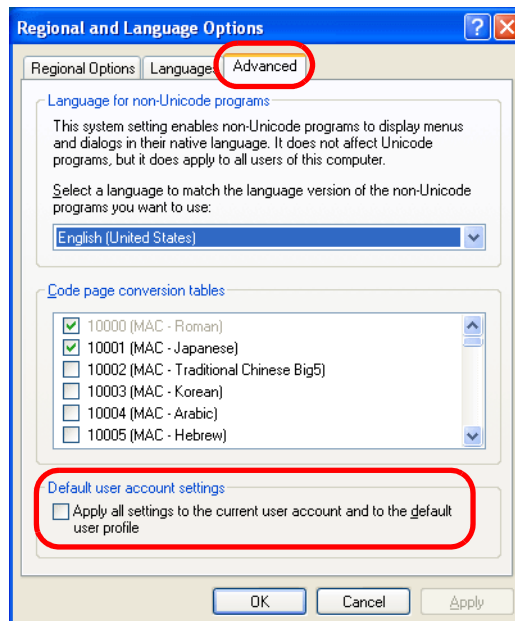
### IMPORTANT

- If you create a user account before setting the Control Panel, create the user account again by following the procedure below.

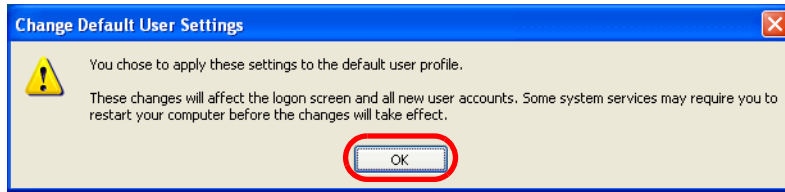
- (1) Delete the created user account.
  - 1 Select [Start] -> [Run].
  - 2 In the dialog box, type “control userpasswords2” and click [OK].
  - 3 The [User Accounts] dialog box appears. Select the user account you want to delete and click [Delete].
- (2) Set the Control Panel by following the procedure of “■ Control Panel settings procedure” shown below.
- (3) Create a user account.

### ■ Control Panel settings procedure

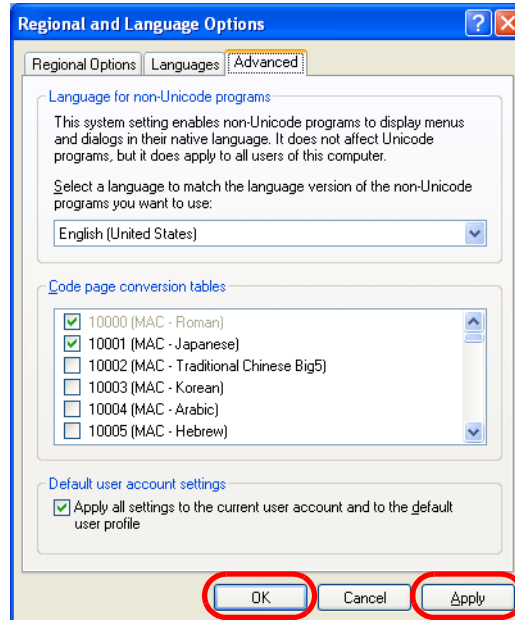
- (1) Select [Start] -> [Control Panel] -> [Date, Time, Language, and Regional Options] -> [Regional and Language Option].
- (2) In the dialog box, select the [Advanced] tab and check [Default user account settings].



- (3) When the following dialogbox appears, click [OK].



- (4) The [Advanced ] tab appears again. Click [Apply] -> [OK].

**NOTE**

- It is not necessary to restart the XPE.

## 12 Notes on turning off the power

In the factory settings, the Write Filter function is set as disable. When data is written in the devices (except CF card) that are not protected by the Write Filter, turning off the power may cause damage of the data.

### ■ When the Write Filter is enabled

It is not necessary to perform the shutdown procedure. Confirm that no data is being written into another device, follow the steps of Safely Remove Hardware, and then turn off the power. However, the OS setting changed and the data written to the CF card during the time will be canceled and lost when the power is turned off.

<How to confirm that no data is being written into another device>

Hard Disk : Confirm that the LED of the IPC Series is turned off.

USB Device/PCMCIA : Confirm that no data is written on user's applications.

### ■ When the Write Filter is disabled

It is necessary to perform the shutdown procedure. Because the write protection is not enabled, the OS setting changed and the data written to the CF card will be enabled.

## 13 Backup/Recovery of the CF Card

The Backup/Recovery Tool is only available from the Pro-face's support site "Otasuke Pro!".

(URL <http://www.pro-face.com/otasuke/>)

For downloading or how to use the Backup/Recovery Tool, refer to "XP Embedded CF card backup/recovery tool" from the abovementioned website.

The Backup/Recovery Tool can be used only when the following conditions are satisfied.

- Only a CF card of the same size made by Pro-face can be recovered.
- Only an XP Embedded CF card made by Pro-face can be backed up.

**IMPORTANT**

- Data cannot be recovered without backup data. Back up the data with the factory settings or after installing the required application programs.
- Neither backup nor recover the CF card, which sets hibernation or HORM. OS will not start normally.
- For backing up data, refer to "Backup" described in "How to Use" in the "XP Embedded CF card backup recovery tool" on the Pro-face support site "Otasuke Pro!".



## 14 Restrictions

- Help document is not installed.
- The virtual memory function cannot be used. The OS may stop depending on the memory allocation of application software used. Check the memory usage at starting the XPE.
- The function to save Cache in Internet Explorer and Internet Information Service is set as shown below before shipment.
  - Cache File: Minimum Value
  - Internet Information Service: disable
  - Since the cache files are saved on RAM DISK, those files are deleted when you turn off the XPE.
- Do not change the memory capacity when the XPE is in hibernation.

**NOTE**

- The function of Windows Update is the online support to update Windows automatically and make the system the newest condition. But XPE does not correspond to Microsoft's Windows Update Service. When executing Windows Update on the Internet, a certain update module will fail. Do not execute installation on the Internet.

# 2 | Troubleshooting

1	Problems and countermeasures .....	2-2
---	------------------------------------	-----

# 1 Problems and countermeasures

## NOTE

- The newest manual, Driver and Utility can be downloaded from the Digital Electronics Corporation's homepage.

Also often questions and helpful informations are uploaded as Q&A to Digital Electronics Corporation's homepage.

Please refer them to the purpose of usage. <http://www.pro-face.com/otasuke/>

Problems	Countermeasures and troubleshooting
The installed software does not work after rebooting the computer.	Has the Write Filter (the function that protects the CF card from writing) been enabled?
Rebooting the computer cancels the new setting.	☞ "4.1 Write Filter Settings Procedure" (Page 1-7)
Changing the Write Filter setting	☞ "4.1 Write Filter Settings Procedure" (Page 1-7)
EWFSSettingTool (Write Filter's setting screen) does not work properly.	Check if the CF card is set to the primary master (Disk 0) in the BIOS setting. ☞ Refer to the system setting description in the instruction manual of your panel computer.
Packet INternet Grouper (PING) is blocked when accessing the network.	Has the firewall been enabled? Change the setting according to the following procedure: 1. Click the [Start] button to open [Control Panel]. 2. Double-click [Network and Internet Connections] to open [Network Connections]. 3. Double-click [Local Area Connection] and click [Properties] to open [Local Area Connection Properties]. 4. On the [Advance] tab, select [Windows Firewall] and open [Settings]. 5. On the [Advanced] tab, select [ICMP] and open [Settings]. 6. Check [Allow incoming echo request].
Recovering the CF card	Download the Recovery Tool from the Pro-face's support site "Otasuke Pro!" and recover the data. It is necessary to backup the CF card using the Recovery Tool before recovering the data. ☞ "13 Backup/Recovery of the CF Card" (Page 1-33)
Backing up the CF card	☞ "13 Backup/Recovery of the CF Card" (Page 1-33)
The touch point is displaced.	Has the touch point been corrected? ☞ "10 Using Touch Panel Operations" (Page 1-28)
The error message "The CF card is broken. Recover the CF card." is displayed.	The CF card does not function properly. Perform the recovery procedure. If the same error message is displayed even after performing the recovery procedure, the CF card may be damaged.
When I try to change the language, the error message "Set to "Protect OFF" by using EWFSSetting Tool." is displayed.	The language cannot be changed because the Write Filter function is enabled. Disable the Write Filter function first and then change the language.

Problems	Countermeasures and troubleshooting
<p>When I input characters with KPM, the output characters are different from those indicated with the labels.</p>	<p>Is the keyboard layout set to US layout? The KPM is designed to operate properly with the US keyboard layout.</p> <p>☞ “7 Changing the OS language/keyboard layout” (Page 1-16)</p> <p>☞ PL3000 Series Reference Manual “4 Using Key Commands to Input Text and Operate Applications”</p>
<p>I created a new user account, but it is displayed in a different OS language from the one used for creation.</p>	<p>Did you set the Control Panel before creating the user account?</p> <p>☞ “11 Notes on creating user accounts” (Page 1-30)</p>
<p>My user name and password can not be remembered when accessing to the web server by Internet Explorer.</p>	<p>[Remember my password] of the web server's login dialog box will not function with the user account which has changed the Security ID.</p> <p>In the following cases, create a new user account and log in again.</p> <ul style="list-style-type: none"> <li>• When the Security ID has not changed since your purchase</li> <li>• When the Security ID has changed after creating an user account</li> </ul> <p>☞ “11 Notes on creating user accounts” (Page 1-30)</p>
<p>When installing the software to XPE, a dialog box name, [Files Needed] appears</p>	<p>Type the path of the file name in [Copy files from:] that is requested by the [Files Needed] dialog box.</p> <p>Requested the DLL file(***.DLL) : C:\WINDOWS\System32</p> <p>Requested the SYS file(***.SYS): C:\WINDOWS\System32\drivers</p> <p>When the files do not exist in the path above, please contact your local distributor.</p>





# Appendices

1	[IN-fINITY soft KeyClick32] Agreement.....	A-2
2	[DMC Corporation Mouse Emulation Software] SLA .....	A-3

## 1 [IN-fINITY soft KeyClick32] Agreement

### [IN-fINITY soft KeyClick32] Agreement

Digital Electronics Corporation shall be in no case liable for any loss or damages to you or any third party whatsoever arising from any faulty performance of IN-fINITY soft, nor shall be responsible to correct such error of the software program in question.

## 2 [DMC Corporation Mouse Emulation Software] SLA

### **[DMC Corporation Mouse Emulation Software(TSC-1310D/DD)] Software License Agreement**

Before unsealing and using this product, please read the following license agreement carefully: This license agreement regarding the following software product (hereinafter called “product”) is concluded between you the individual or entity licensing the product (hereinafter called (“licensee”) and DMC Co., Ltd. (hereinafter called “DMC”). With unsealing, installing, copying or using the product, the licensee is regarded to agree this contract and the contract is in force. Please confirm and understand this agreement fully in advance. If you do not agree this contract, do not unseal, install, copy or use the software product at all. In such a case, please return the product at an unused state to the place you the licensee purchased it. Your payment will be returned to the licensee.

#### 1. Copyright

The copyright of the software product belongs to Touch-Base, Ltd.

#### 2. License

For the programs included in this product and the documents related to it, DMC grants untransferable nonexclusive license to licensee, which permits use of the product under the following conditions:

- (1) When a licensee does not purchase the license which permits the licensee to use a licensed product and its copy(s) and/or the license which permits use of the product on multiple computers, the licensee is granted the right to use the product on a single computer.
- (2) The licensee can create one copy of the product for archival purposes. For the other purposes, copying the whole or part of the product is strictly prohibited whichever medium you use.
- (3) The licensee shall display the copyright notice and other necessary information which is the same as that for the product on every copy of the product.
- (4) The intangible property right of the product and its copy(s) belong to DMC or the DMC supplier.

#### 3. Term of use

This contract shall maintain its validity from conclusion of the contract to the cancellation by DMC or the licensee.

#### 4. Termination of the right of use

- (1) The licensee can at any time terminate the right to use the product by expunging or destroying the product and all the copied contents.
- (2) When a licensee contravenes these license contents, DMC can notify the licensee of termination of the right to use the product. In this case, the licensee shall return the product or all the copied contents to DMC within one month.



## 5. Limited Warranty

- (1) DMC guarantees that 90 days after the licensee purchased the product, neither material nor manufacturing flaws shall be found at the medium where the product has been recorded or stored. If any errors related to the material or manufacturing is recognized when the product is installed, we shall replace the medium used to install the product on the condition that we are notified of it within the guaranteed period.
- (2) DMC shall grant the right to use the product at a state it has been supplied without explicit or implicit guarantee except for replacement of the medium containing product described in the above clause. Further, we do not guarantee that the product is suitable as useful for the licensee's specific purpose of use and that execution of the product is neither interrupted nor an error is found at its execution.
- (3) The responsibility attributable to DMC based on this agreement is limited to replacement of the medium containing the product, and DMC shall not assume any responsibility for the explicit or implicit guarantee including the other legal warranty against a defect and a liability for reparation given from a third party to the licensee regarding the licensee's profit loss caused by the product, damage arising from a special circumstance and the damage against data or intangible property right.

## 6. License's obligation

The licensee shall recognize that the product shall possess the confidential information or property information including the intangible property right protected by the Copyright Act and shall not take the following actions:

- (1) Use and copying of the product against the terms of the license and disassembling, reverse engineering, and modifying the product.
- (2) Deletion and/or change of display of the intangible property right including the copyright displayed on the medium containing the product.

## 7. Restrictions on Export

When the product is subjected to the regulation of the Foreign Exchange and Foreign Trade Control Act and the laws and regulations accompanying it and the Export, the licensee shall observe the corresponding laws and regulations and rules.

DMC Co.,Ltd.

<http://www.dmccoltd.com>

Hironokougyoudanchi, Hirono-machi, Futaba-gun, Fukushima

979-0401, Japan

Phone: +81-240-27-4030 Fax: +81-240-27-4025