



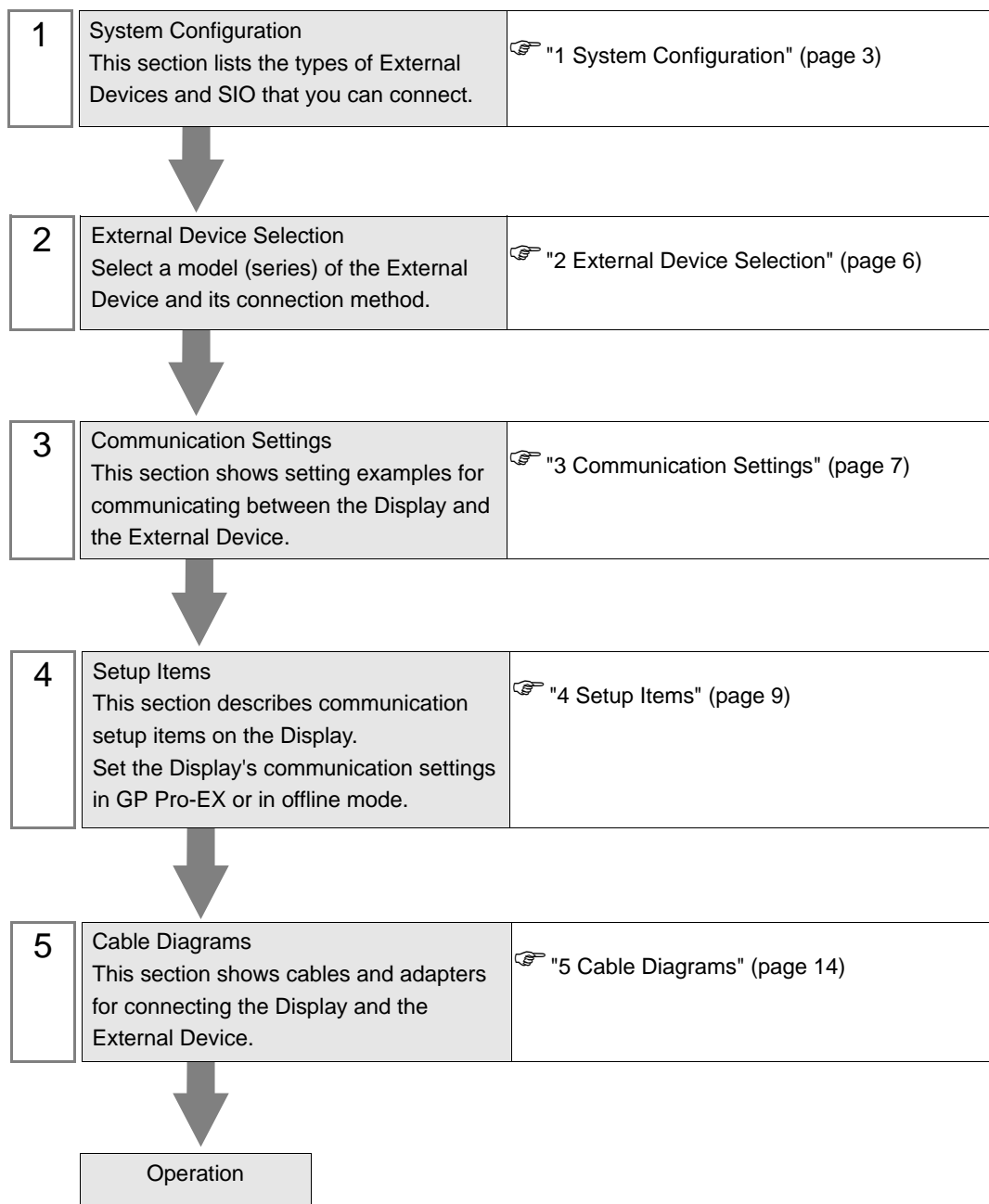
SAPHIR SIO Driver

| | | |
|---|-----------------------------------|----|
| 1 | System Configuration..... | 3 |
| 2 | External Device Selection | 6 |
| 3 | Communication Settings | 7 |
| 4 | Setup Items | 9 |
| 5 | Cable Diagrams | 14 |
| 6 | Supported Devices..... | 16 |
| 7 | Device Code and Address Code..... | 28 |
| 8 | Error Messages | 29 |

Introduction

This manual describes how to connect the Display and the External Device.

In this manual, the connection procedure is described in the sections identified below:



1 System Configuration

The following section shows system configurations for connecting Siemens Building Technologies External Devices and the Display.

| Series | CPU | Link I/F | SIO Type | Setting Example | Cable Diagram |
|--------|----------|-----------------------|----------|-------------------------------|------------------------------|
| SAPHIR | ACC88 | CPU Service Interface | RS-232C | Setting Example 1 (page 7) | Cable Diagram 1 (page 14) |
| | ACX32 | | | | |
| | ACX34 | | | | |
| | ACX36 | | | | |
| | ACX38 | | | | |
| | HRC3.1 | | | | |
| | HRC3.2 | | | | |
| | RBX-Core | | | | |
| | RCX34.2 | | | | |

■ Connection Configuration

◆ 1:1 Connection



NOTE

- Connecting External Devices to multiple COM ports on IPC Series will degrade performance. Please use a 1:1 connection.

■ IPC COM Port

When connecting IPC with an External Device, the COM port used depends on the series and SIO type. Please refer to the IPC manual for details.

Usable port

| Series | Usable Port | | |
|---|--|----------------------|----------------------|
| | RS-232C | RS-422/485(4 wire) | RS-422/485(2 wire) |
| PS-2000B | COM1 ^{*1} , COM2, COM3 ^{*1} , COM4 | - | - |
| PS-3450A, PS-3451A, PS3000-BA, PS3001-BD | COM1, COM2 ^{*1*2} | COM2 ^{*1*2} | COM2 ^{*1*2} |
| PS-3650A (T41 model), PS-3651A (T41 model) | COM1 ^{*1} | - | - |
| PS-3650A (T42 model), PS-3651A (T42 model) | COM1 ^{*1*2} , COM2 | COM1 ^{*1*2} | COM1 ^{*1*2} |
| PS-3700A (Pentium®4-M) PS-3710A | COM1 ^{*1} , COM2 ^{*1} , COM3 ^{*2} , COM4 | COM3 ^{*2} | COM3 ^{*2} |
| PS-3711A | COM1 ^{*1} , COM2 ^{*2} | COM2 ^{*2} | COM2 ^{*2} |
| PS4000 ^{*3} | COM1, COM2 | - | - |
| PL3000 | COM1 ^{*1*2} , COM2 ^{*1} , COM3, COM4 | COM1 ^{*1*2} | COM1 ^{*1*2} |

*1 The RI/5V can be switched. Use the IPC's switch to change if necessary.

*2 Set up the SIO type with the DIP Switch. Please set up as follows according to SIO type to be used.

*3 When making communication between an External Device and COM port on the Expansion slot, only RS-232C is supported. However, ER (DTR/CTS) control cannot be executed because of the specification of COM port.

For connection with External Device, use user-created cables and disable Pin Nos. 1, 4, 6 and 9. Please refer to the IPC manual for details of pin layout.

DIP Switch setting: RS-232C

| DIP Switch | Setting | Description |
|------------|-------------------|---|
| 1 | OFF ^{*1} | Reserved (always OFF) |
| 2 | OFF | SIO type: RS-232C |
| 3 | OFF | |
| 4 | OFF | Output mode of SD (TXD) data: Always output |
| 5 | OFF | Terminal resistance (220Ω) insertion to SD (TXD): None |
| 6 | OFF | Terminal resistance (220Ω) insertion to RD (RXD): None |
| 7 | OFF | Short-circuit of SDA (TXA) and RDA (RXA): Not available |
| 8 | OFF | Short-circuit of SDB (TXB) and RDB (RXB): Not available |
| 9 | OFF | RS (RTS) Auto control mode: Disabled |
| 10 | OFF | |

*1 When using PS-3450A, PS-3451A, PS3000-BA and PS3001-BD, turn ON the set value.

DIP Switch setting: RS-422/485 (4 wire)

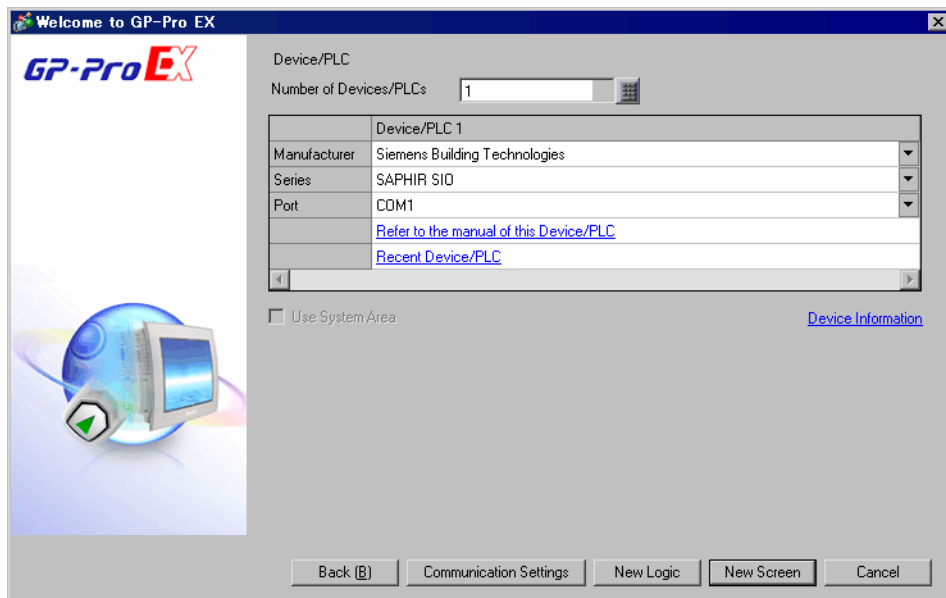
| DIP Switch | Setting | Description |
|------------|---------|---|
| 1 | OFF | Reserved (always OFF) |
| 2 | ON | SIO type: RS-422/485 |
| 3 | ON | |
| 4 | OFF | Output mode of SD (TXD) data: Always output |
| 5 | OFF | Terminal resistance (220Ω) insertion to SD (TXD): None |
| 6 | OFF | Terminal resistance (220Ω) insertion to RD (RXD): None |
| 7 | OFF | Short-circuit of SDA (TXA) and RDA (RXA): Not available |
| 8 | OFF | Short-circuit of SDB (TXB) and RDB (RXB): Not available |
| 9 | OFF | RS (RTS) Auto control mode: Disabled |
| 10 | OFF | |

DIP Switch setting: RS-422/485 (2 wire)

| DIP Switch | Setting | Description |
|------------|---------|--|
| 1 | OFF | Reserved (always OFF) |
| 2 | ON | SIO type: RS-422/485 |
| 3 | ON | |
| 4 | OFF | Output mode of SD (TXD) data: Always output |
| 5 | OFF | Terminal resistance (220Ω) insertion to SD (TXD): None |
| 6 | OFF | Terminal resistance (220Ω) insertion to RD (RXD): None |
| 7 | ON | Short-circuit of SDA (TXA) and RDA (RXA): Available |
| 8 | ON | Short-circuit of SDB (TXB) and RDB (RXB): Available |
| 9 | ON | RS (RTS) Auto control mode: Enabled |
| 10 | ON | |

2 External Device Selection

Select the External Device to be connected to the Display.



| Setup Items | Setup Description |
|------------------------|---|
| Number of Devices/PLCs | Use an integer from 1 to 4 to enter the number of Devices/PLCs to connect to the display. |
| Manufacturer | Select the manufacturer of the External Device to be connected. Select "Siemens Building Technologies". |
| Series | Select a model (series) of the External Device and its connection method. Select "SAPHIR SIO". In System configuration, check to make sure the External Device to which you are connecting is supported by the "SAPHIR SIO" driver. ☞ "1 System Configuration" (page 3) |
| Port | Select the Display port to be connected to the External Device. |
| Use System Area | Not available for this driver. |

3 Communication Settings

This section provides examples of communication settings recommended by Pro-face for the Display and the External Device.

3.1 Setting Example 1

■ GP-Pro EX Settings

◆ Communication Settings

To display the setup screen, from the [Project] menu, point to [System Settings] and select [Device/PLC].

Device/PLC 1

Summary [Change Device/PLC](#)

Manufacturer: Siemens Building Technologies Series: SAPHIR SIO Port: COM1

Text Data Mode: 2 [Change](#)

Communication Settings

SIO Type: ☒ RS232C ☐ RS422/485(2wire) ☐ RS422/485(4wire)

Speed: 57600

Data Length: ☐ 7 ☒ 8

Parity: ☒ NONE ☐ EVEN ☐ ODD

Stop Bit: ☒ 1 ☐ 2

Flow Control: ☒ NONE ☐ ER(DTR/CTS) ☐ XON/XOFF

Timeout: 3 (sec)

Retry: 2

Wait To Send: 0 (ms)

RI / VCC: ☒ RI ☐ VCC

In the case of RS232C, you can select the 9th pin to RI (Input) or VCC (5V Power Supply). If you use the Digital's RS232C Isolation Unit, please select it to VCC.


Default

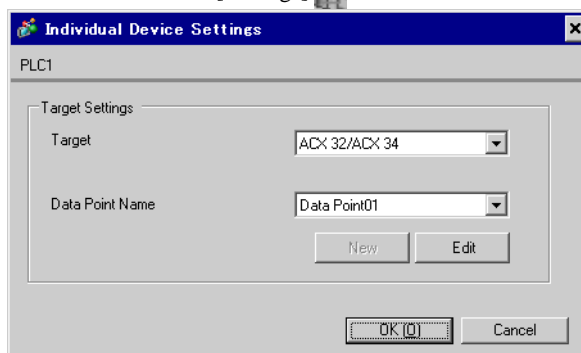
Device-Specific Settings

Allowable Number of Devices/PLCs: 1 [Add Device](#)

| No. | Device Name | Settings | Add Indirect Device |
|-----|-------------|---------------------------------------|-------------------------------------|
| 1 | PLC1 | Data Point Name=,Target=ACX 32/ACX 34 | + |

◆ Device Setting

To display the [Individual Device Settings] dialog box, from [Device-Specific Settings] in the [Device/PLC] window, select the external device and click [Settings] .



NOTE

- To configure the data point, you can create a new data point or import a CSV file.

☞ " ■ Creating New Data Points" (page 25)

☞ " ■ Importing Data Points" (page 19)

■ External Device Settings

External Device communication settings are fixed as indicated below.

| Setup Items | Setting Value |
|------------------|---------------|
| Baud Rate | 57600 |
| Character Length | 8 |
| Parity Bit | NONE |
| Stop Bit | 1 |
| Flow Control | NONE |

4 Setup Items

Set up the Display's communication settings in GP Pro-EX or in the Display's offline mode.

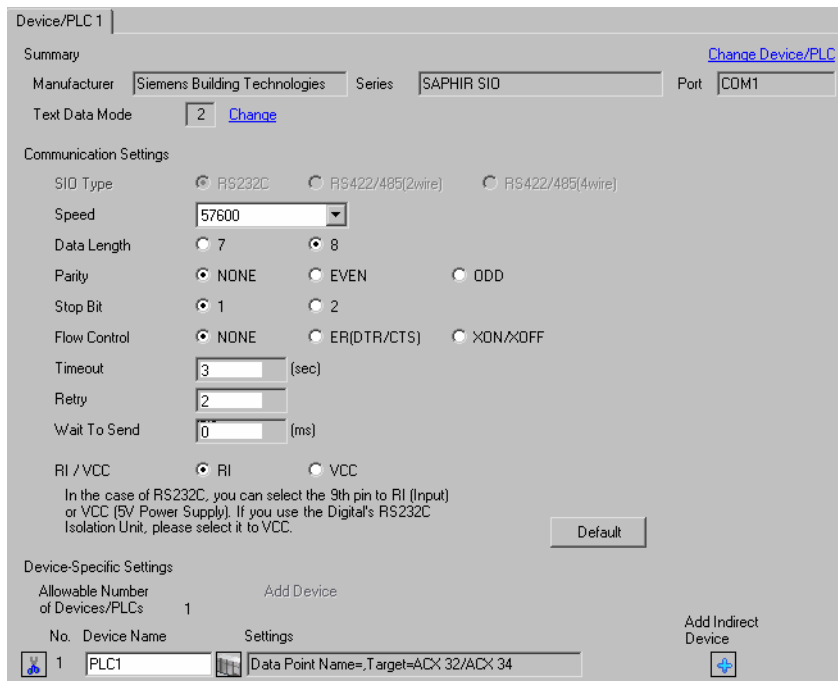
The setting of each parameter must match that of the External Device.

 "3 Communication Settings" (page 7)

4.1 Setup Items in GP Pro-EX

■ Communication

To display the setup screen, from the [Project] menu, point to [System Settings] and select [Device/PLC].



Device/PLC 1

Summary

Manufacturer: Siemens Building Technologies Series: SAPHIR SIO Port: COM1 [Change Device/PLC](#)

Text Data Mode: 2 [Change](#)

Communication Settings

SIO Type: ☒ RS232C ☐ RS422/485(2wire) ☐ RS422/485(4wire)

Speed: 57600

Data Length: ☐ 7 ☒ 8

Parity: ☒ NONE ☐ EVEN ☐ ODD

Stop Bit: ☒ 1 ☐ 2

Flow Control: ☒ NONE ☐ ER(DTR/CTS) ☐ XON/XOFF

Timeout: 3 (sec)

Retry: 2

Wait To Send: 0 (ms)

RI / VCC: ☒ RI ☐ VCC

In the case of RS232C, you can select the 9th pin to RI (Input) or VCC (5V Power Supply). If you use the Digital's RS232C Isolation Unit, please select it to VCC.

Default

Device-Specific Settings

Allowable Number of Devices/PLCs: 1 [Add Device](#)

No. Device Name Settings

1 PLC1 [Add Indirect Device](#)

Data Point Name=, Target=ACX 32/ACX 34

| Setup Items | Setup Description |
|--------------|--|
| SIO Type | Displays the SIO type to communicate with the External Device. |
| Speed | Select the communication speed between the External Device and the Display. |
| Data Length | Select the data length. |
| Parity | Select how to check parity. |
| Stop Bit | Select stop bit length. |
| Flow Control | Select the communication control method to prevent overflow of transmission and reception data. |
| Timeout | Enter the time (seconds) for which the Display waits for the response from the External Device, from "1 to 127". |
| Retry | In case of no response from the External Device, enter how many times the Display retransmits the command, from "0 to 255". |
| Wait To Send | Enter the standby time (milliseconds) from when the Display receives packets until it transmits the next command, from "0 to 255". |

Continues to the next page.


| Setup Items | Setup Description |
|-------------|--|
| RI/VCC | Switches the 9th pin between RI and VCC. When connecting to the IPC, to change between RI and 5V you need to use the IPC's changeover switch. Please refer to the IPC manual for details. |

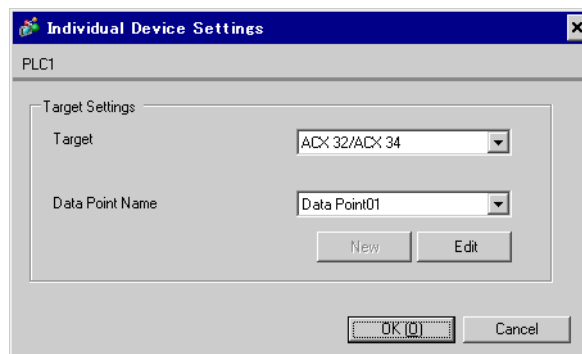
NOTE


- Refer to the GP-Pro EX Reference Manual for Indirect Device.

Cf. GP-Pro EX Reference Manual "Changing the Device/PLC at Runtime (Indirect Device)"

■ Device Setting

To display the [Individual Device Settings] dialog box, from [Device-Specific Settings] in the [Device/PLC] window, select the external device and click [Settings] .



| Setup Items | Setup Description |
|-----------------|---|
| Target | Select the CPU of the External Device. |
| Data Point Name | Select the data point.  "6 Supported Devices" (page 16) |

4.2 Setup Items in Offline Mode

NOTE

- Refer to the Maintenance/Troubleshooting guide for information on how to enter offline mode or about operation.

Cf. Maintenance/Troubleshooting Guide "Offline Mode"

- The number of the setup items to be displayed for 1 page in the offline mode depends on the Display in use. Please refer to the Reference manual for details.

■ Communication


To display the setting screen, from [Peripheral Settings] in offline mode, touch [Device/PLC Settings]. Touch the External Device you want to set from the displayed list.

| Comm. | Device | Option | | |
|----------------------------|--|--------|--|------------------------|
| SAPHIR SIO [COM1] Page 1/1 | | | | |
| SIO Type | RS232C | | | |
| Speed | 57600 | | | |
| Data Length | <input type="radio"/> 7 <input checked="" type="radio"/> 8 | | | |
| Parity | <input checked="" type="radio"/> NONE <input type="radio"/> EVEN <input type="radio"/> ODD | | | |
| Stop Bit | <input checked="" type="radio"/> 1 <input type="radio"/> 2 | | | |
| Flow Control | NONE | | | |
| Timeout(s) | 3 | | | |
| Retry | 2 | | | |
| Wait To Send(ms) | 0 | | | |
| Exit | | Back | | 2010/09/17 16:11:34 |

| Setup Items | Setup Description |
|--------------|--|
| SIO Type | Displays the SIO type to communicate with the External Device. |
| Speed | Select the communication speed between the External Device and the Display. |
| Data Length | Select the data length. |
| Parity | Select how to check parity. |
| Stop Bit | Select stop bit length. |
| Flow Control | Select the communication control method to prevent overflow of transmission and reception data. |
| Timeout | Enter the time (seconds) for which the Display waits for the response from the External Device, from "1 to 127". |
| Retry | In case of no response from the External Device, enter how many times the Display retransmits the command, from "0 to 255". |
| Wait To Send | Enter the standby time (milliseconds) from when the Display receives packets until it transmits the next command, from "0 to 255". |

- Device

To display the setting screen, touch [Device/PLC Settings] from [Peripheral Settings]. Touch the External Device you want to set from the displayed list, and touch [Device].

| | | | | |
|-----------------|--------|--|------|------------------------|
| Comm. | Device | Option | | |
| | | | | |
| SAPHIR S10 | | [COM1] | | Page 1/1 |
| Device/PLC Name | | PLC1  | | |
| Target ID | | 6 | | |
| | Exit | | Back | 2010/09/17 16:11:42 |

| Setup Items | Setup Description |
|-----------------|---|
| Device/PLC Name | Select the External Device to set. Device/PLC name is the title of the External Device set with GP-Pro EX. (Initial value [PLC1]) |
| Target ID | Displays the External Device target ID. |

■ Option

To display the setting screen, touch [Device/PLC Settings] from [Peripheral Settings]. Touch the External Device you want to set from the displayed list, and touch [Option].

| | | | | |
|-------|--------|--------|--|--|
| Comm. | Device | Option | | |
| | | | | |

SAPHIR SIO
[COM1]
Page 1/1

RI / VCC ☒ RI ☐ VCC

In the case of RS232C, you can select the 9th pin to RI(Input) or VCC(5V Power Supply). If you use the Digital's RS232C Isolation Unit, please select it to VCC.

Exit
Back
2010/09/17
16:11:47

| Setup Items | Setup Description |
|-------------|--|
| RI/VCC | Switches the 9th pin between RI and VCC. When connecting to the IPC, to change between RI and 5V you need to use the IPC's changeover switch. Please refer to the IPC manual for details. |

NOTE

- GP-4100 series and GP-4*0ITM do not have the [Option] setting in the offline mode.

5 Cable Diagrams

The following cable diagrams may be different from cable diagrams recommended by Siemens Building Technologies. Please be assured there is no operational problem in applying the cable diagrams shown in this manual.


- The FG pin of the External Device body must be grounded according to your country's applicable standard. Refer to your External Device manual for details.
- SG and FG are connected inside the Display. When connecting the External Device to SG, design your system to avoid short-circuit loops.
- Connect an isolation unit if the communication is not stable due to noise or other factors.

Cable Diagram 1

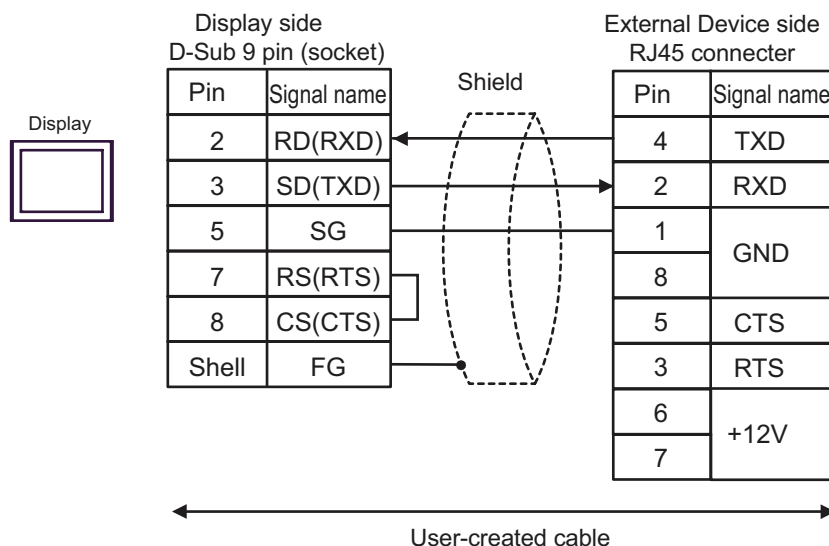
| Display (Connection Port) | Cable | | Notes |
|---|-------|--------------------|---------------------------|
| GP3000 (COM1) GP4000 ^{*1} (COM1) ST (COM1) IPC ^{*2} PC/AT | 1A | User-created cable | Cable length: 15m or less |
| GP-4105 (COM1) | 1B | User-created cable | |

*1 All GP4000 models except GP-4100 Series and GP-4203T

*2 You can only use COM ports that can communicate using RS-232C.

 ■ IPC COM Port (page 4)

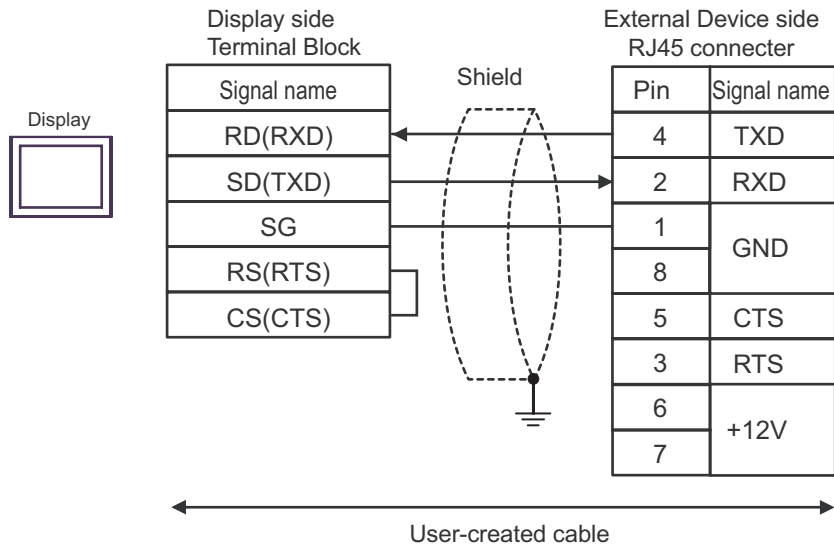
1A)



NOTE

- Pins 1 and 8 are connected inside the External Device.
- Do not connect anything to pins 6 and 7 on the External Device.

1B)

**NOTE**

- Pins 1 and 8 are connected inside the External Device.
- Do not connect anything to pins 6 and 7 on the External Device.

6 Supported Devices

The following table shows the range of supported device addresses. Please note that the actual supported range of the devices varies depending on the External Device to be used. Please check the actual range in the manual of your External Device.

Enter the External Device address in the dialog box below.

| Member Name | Member ID | Type |
|-------------|-----------|------|
| wAC_0006 | 0006 | WORD |

- | | |
|------------|---|
| 1. Address | The address is populated when you select a member. You can also input the address directly. |
| 2. Object | Select the object with the member you want to use. |
| 3. Member | Select the member to use. |

NOTE

- When the [Set as Default Value] check box is selected, the defined value is used as the initial value when entering a new address.

6.1 SAPHIR Series

| Data Type | Bit Address | Word Address | 32 bit | Notes |
|-----------|--|-------------------------|--------|-------|
| BOOL | Object Name.Member Name | - | - | *1 |
| ACCESS | - | Object Name.Member Name | | *1 |
| WORD15 | - | Object Name.Member Name | | *1 |
| INT | Object Name.Member Name.00 - Object Name.Member Name.15 | Object Name.Member Name | | *1 |
| WORD | Object Name.Member Name.00 - Object Name.Member Name.15 | Object Name.Member Name | | *1 |
| FLOAT | - | Object Name.Member Name | L / H | *1 |
| LONG | Object Name.Member Name.00 - Object Name.Member Name.31 | Object Name.Member Name | | *1 |
| ULONG | Object Name.Member Name.00 - Object Name.Member Name.31 | Object Name.Member Name | | *1 |
| DOUBLE | - | Object Name.Member Name | | *1 *2 |
| STR6 | - | Object Name.Member Name | - | *1 |
| STR16 | - | Object Name.Member Name | | *1 |
| STR20 | - | Object Name.Member Name | | *1 |
| STR40 | - | Object Name.Member Name | | *1 |
| STR80 | - | Object Name.Member Name | | *1 |

*1 Including delimiters and the bit number, the length of the address must be 255 single-byte characters or less.
When used in D-Script, the length must be 54 single-byte characters or less.

*2 When using 64 bit devices in GP-Pro EX, values in the top 32 bits are ignored.

NOTE

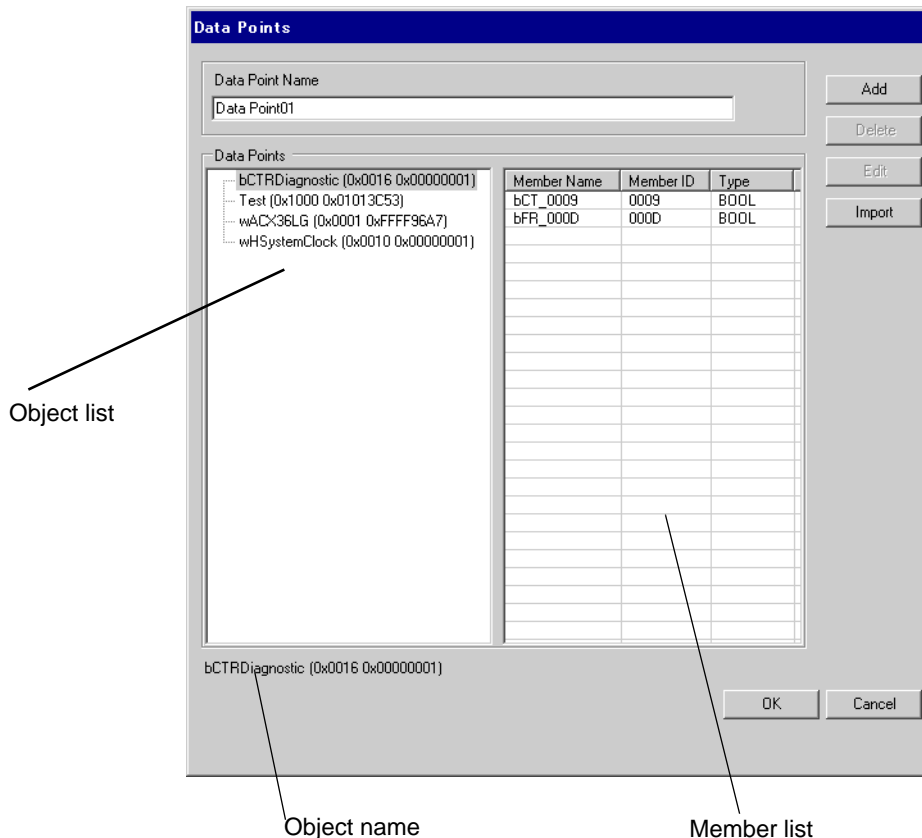
- You can set only Read Area Size for the system area available to use in the External Device.
Please refer to the GP-Pro EX Reference Manual for Read Area Size.
Cf. GP-Pro EX Reference Manual "LS Area (Direct Access Method Area)"
- Please refer to the precautions on manual notation for icons in the table.



"Manual Symbols and Terminology"

■ Data Points Dialog Box Settings

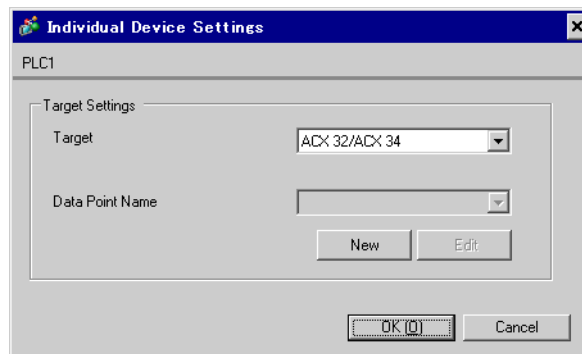
To display the [Data Points] dialog box in GP-Pro EX, in the [Individual Device Settings] dialog box click either [New] or [Edit].



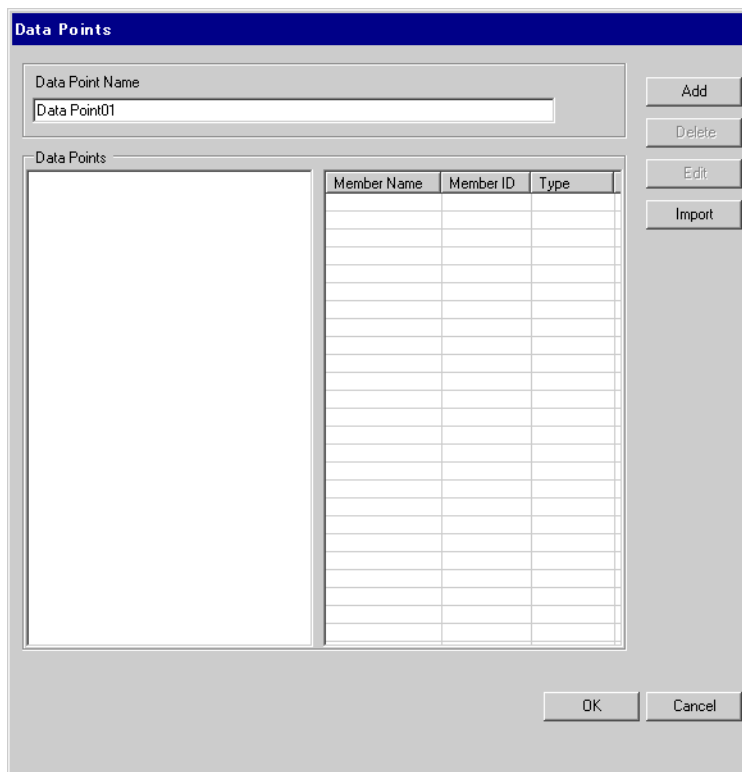
| Setup Items | Setup Description |
|-----------------|--|
| Data Point Name | Enter the Data Point name. |
| Object list | Displays the objects in the data point. |
| Member list | Displays the members in the object. |
| Add | Add an object and a member. ☞ " ■ Creating New Data Points" (page 25) |
| Delete | Delete the selected member. If you delete all members, the object is also deleted. |
| Edit | Edit the selected member. |
| Import | Import a Data Point file (.csv). ☞ " ■ Importing Data Points" (page 19) |
| Object name | Displays the name of the object selected in the object list. |

■ Importing Data Points

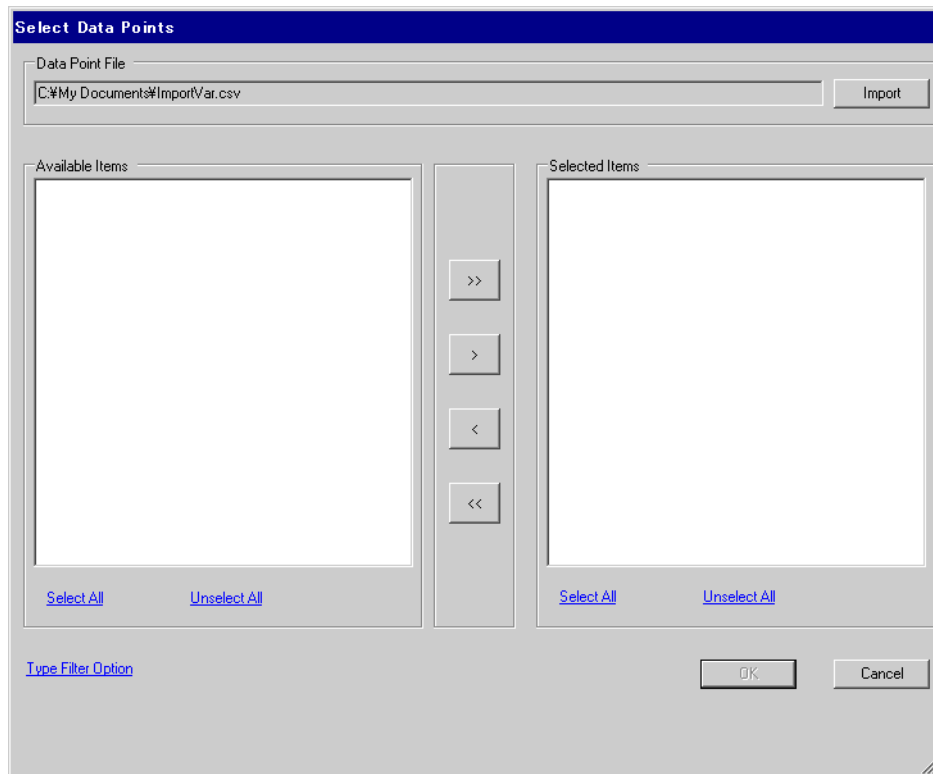
- 1 In GP-Pro EX, open the [Individual Device Settings] dialog box, and from [Target] select the External Device.



- 2 Click [New] to display the [Data Points] dialog box.



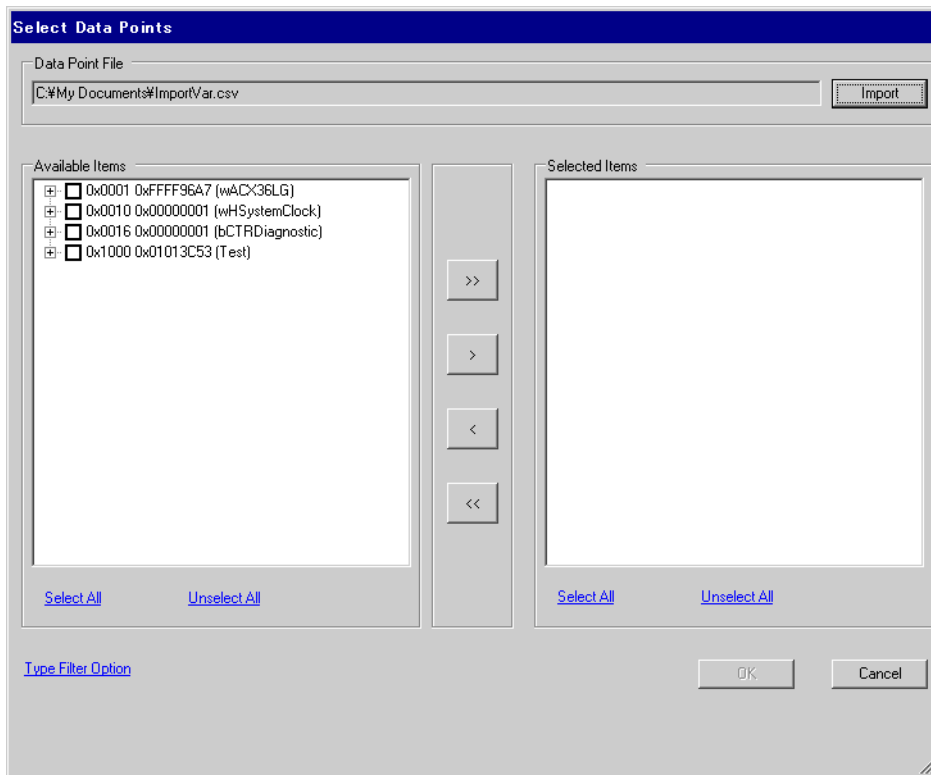
3 Click [Import] to display the [Select Data Points] dialog box.



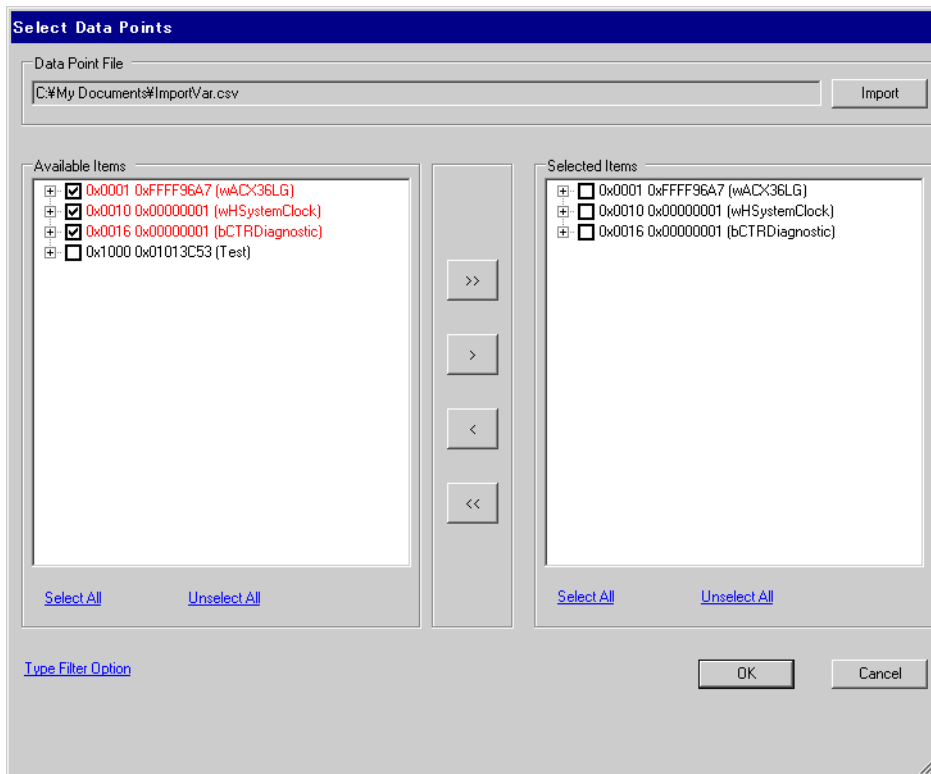
- 4 Click [Import] to import the data point file (in *.CSV format). Objects in the data point file display in the [Available Items] area.

Refer to the following section that describes the data point file format you will be importing.

☞ " ■ Data Point File Format" (page 24)

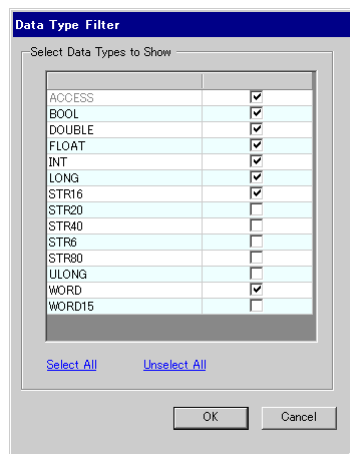


5 Move the objects you want to use to [Selected Items] and click [OK].



NOTE

- Use the following buttons to assist with setting up the objects.
 - [>>] moves all objects to [Selected Items].
 - [>] moves selected objects to [Selected Items].
 - [<] removes selected objects from [Selected Items].
 - [<<] removes all objects from [Selected Items].
- When all members of an object are selected, the object name displays in red. When only some of the members of an object are selected, the object name displays in blue.
- Click [Type Filter Option] to filter the object display. Select the check boxes of data types you want to display.



6 Imports the file and generates data points.

Data Points

Data Point Name
ImportVar

Add
Delete
Edit
Import

Data Points

| Member Name | Member ID | Type |
|-------------|-----------|------|
| bCT_0009 | 0009 | BOOL |
| bFR_000D | 000D | BOOL |

bCTRDiaGnostic (0x0016 0x00000001)

OK Cancel

NOTE

- When the Data point file has an object or a member that cannot be imported, a message box prompts for a log output.
- After importing, displays member names with 3 letters from the object name plus the member ID. Depending on the object name length, conversion is as follows.
 - Object name is 3 characters or less
When the object name is "ABC" and the member ID is "0x0002", the member name after import is "Mem_0002".
 - Object name is 4 characters or more
When the object name is "DEFG" and the member ID is "0x0004", the member name after import is "DEF_0004".

■ Data Point File Format

The data point file (in *.CSV format) imported to GP-Pro EX will have the following format:

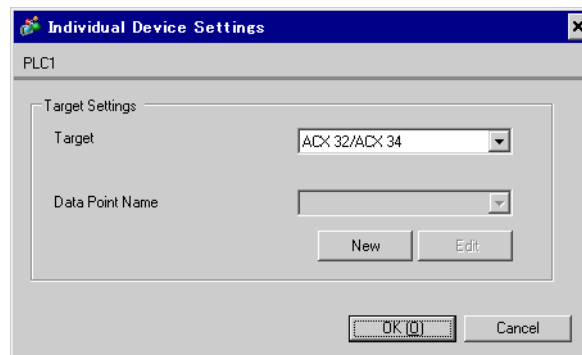
object name,object type,object ID,member ID,member type

Example Data Point File:

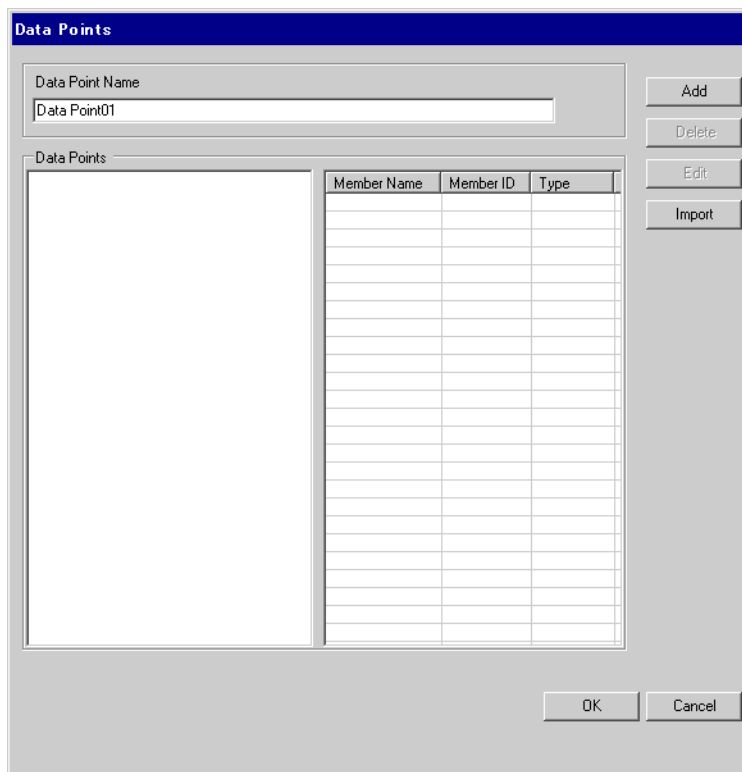
```
ACX36,0x0001,0xFFFF96A7,0x0010,WORD
ACX36,0x0001,0xFFFF96A7,0x0011,WORD
ACX36,0x0001,0xFFFF96A7,0x0012,WORD
EnableObjects,0x001A,0x0000B9AB,0x1000,WORD
EnableObjects,0x001A,0x0000B9AB,0x1001,WORD
EnableObjects,0x001A,0x0000B9AB,0x1100,STR16
HMIConfig,0x0012,0x00000001,0x1000,WORD
HMIConfig,0x0012,0x00000001,0x1001,WORD
```


■ Creating New Data Points

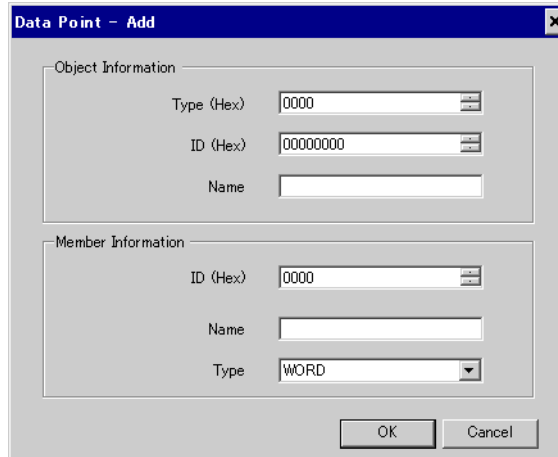
- 1 From GP-Pro EX, open the [Individual Device Settings] dialog box, and from [Target] select the External Device.



- 2 Click [New] to display the [Data Points] dialog box. Enter the Data Point name.



- 3 Click [Add] to display the [Data Point - Add] dialog box.



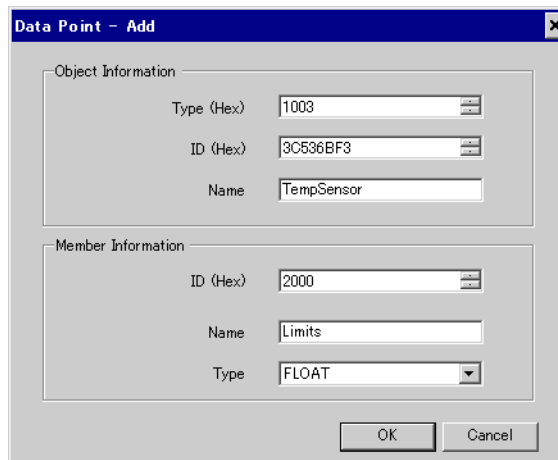
The 'Data Point - Add' dialog box is shown with the following settings:

| Object Information | |
|--------------------|----------|
| Type (Hex) | 0000 |
| ID (Hex) | 00000000 |
| Name | |

| Member Information | |
|--------------------|------|
| ID (Hex) | 0000 |
| Name | |
| Type | WORD |

Buttons: OK, Cancel

- 4 Set up the object and member. The settings must be the same as the External Device's data point settings.



The 'Data Point - Add' dialog box is shown with the following settings:

| Object Information | |
|--------------------|------------|
| Type (Hex) | 1003 |
| ID (Hex) | 3C536BF3 |
| Name | TempSensor |

| Member Information | |
|--------------------|--------|
| ID (Hex) | 2000 |
| Name | Limits |
| Type | FLOAT |

Buttons: OK, Cancel

The created object and member appear in the list.

[illegible]

7 Device Code and Address Code

Device and address codes are not available.

8 Error Messages

Error messages are displayed on the Display screen as follows: "No. : Device Name: Error Message (Error Occurrence Area)". Each description is shown below.

| Item | Description |
|-----------------------|---|
| No. | Error number |
| Device Name | Name of the External Device where an error has occurred. Device/PLC name is the title of the External Device set with GP-Pro EX. (Initial value [PLC1]) |
| Error Message | Displays messages related to an error that has occurred. |
| Error Occurrence Area | <p>Displays the IP address or device address of the External Device where an error has occurred, or error codes received from the External Device.</p> <div style="border: 1px solid black; padding: 2px; width: fit-content;"> NOTE </div> <ul style="list-style-type: none"> • IP address is displayed as "IP address (Decimal): MAC address (Hex)". • Device address is displayed as "Address: Device address". • Received error codes are displayed as "Decimal [Hex]". |

Example Error Message

"RHAA035:PLC1: Error has been responded for device write command (Error Code: 2 [02H])"

NOTE

- Refer to your External Device manual for details on received error codes.
- Refer to "Display-related errors" in "Maintenance/Troubleshooting Guide" for details on the error messages common to the driver.

■ Error Messages Unique to External Device

| Error number | Error Message | Description |
|--------------|--|---|
| RHxx128 | (Node name): Target does not match. Configured: (Decimal), Connected: (Decimal) | ID of the configured External Device does not match the ID of the connected External Device. Please select a valid External Device. |

