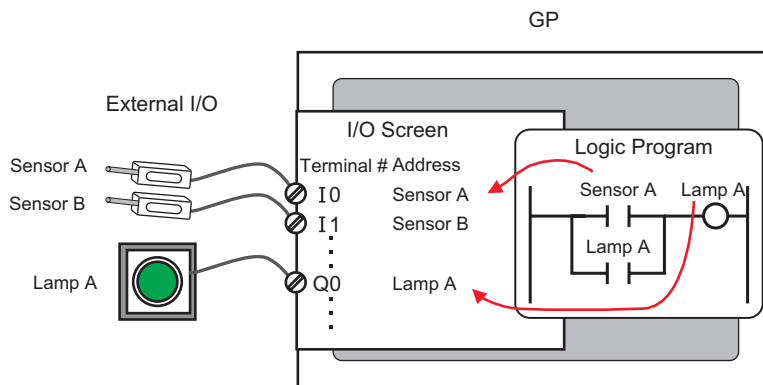


30.3 Controlling External I/O with GP Internal DIO

30.3.1 Details

Use the GP internal DIO driver to control GP external inputs and outputs.

There are 6 inputs and 2 outputs.



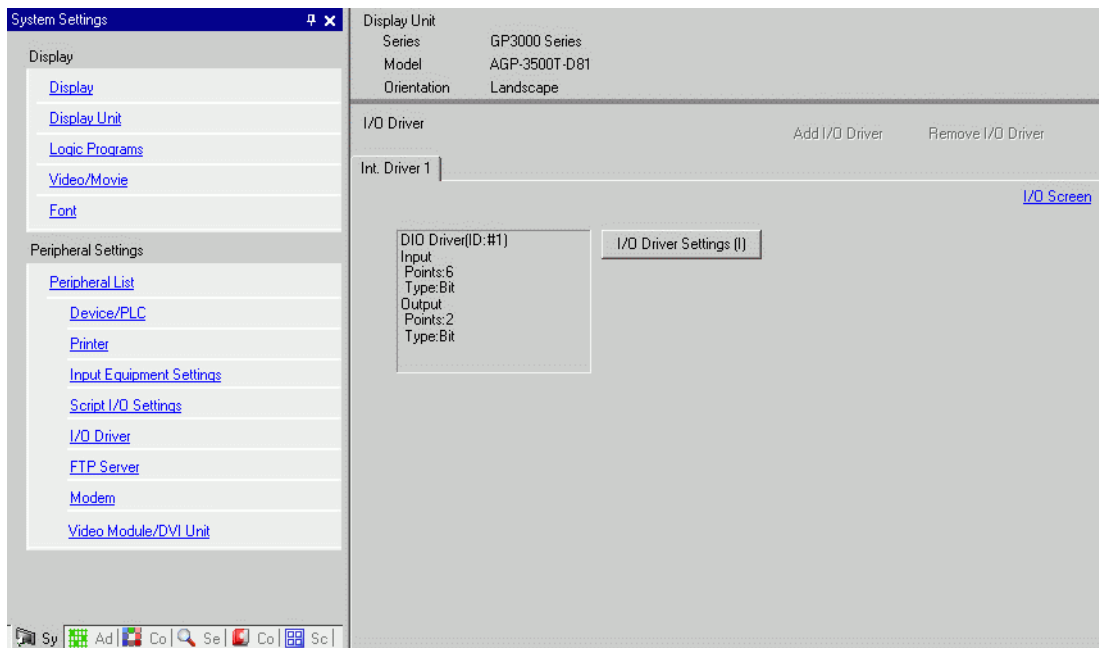
30.3.2 Setup Procedure

NOTE

- Please refer to the Settings Guide for details.
 ☞ "30.3.3 [I/O Driver Settings] Setting Guide" (page 30-12)

1 Select AGP-XXXXX-D81 as the display unit. The DIO driver is automatically set up.

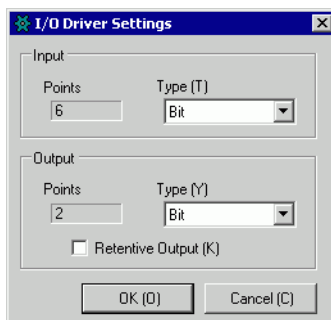
2 In the [System Settings] window, select [I/O Driver] to display the following screen.



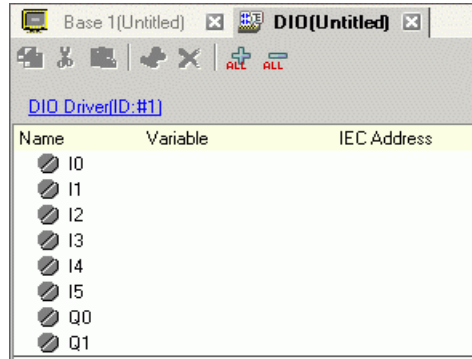
NOTE

- If the [System Settings] tab is not displayed in the workspace, on the [View (V)] menu, point to [Workspace (W)], and then click [System Settings (S)].

3 Click [I/O Driver Settings]. The following dialog box appears. Select input and output address types and click [OK (O)].



4 Click [I/O Screen] to set up I/O terminals.



NOTE

- You can also display the I/O Screen from the [Screen List] window.
-

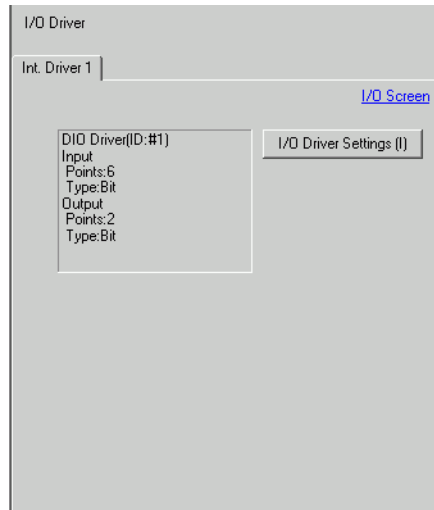
5 Map an address (variable) to each terminal. The following describes how to map addresses.

☞ "30.1.2 Mapping Addresses (variables) to I/O Terminals" (page 30-3)

30.3.3 [I/O Driver Settings] Setting Guide

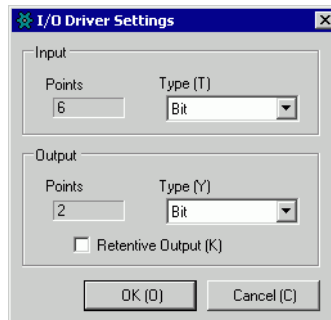
■ DIO Driver

In the [System Settings] window, select [I/O Driver] to display the following screen.



| Setting | Description |
|----------------------------|--|
| I/O Driver Settings | This button displays the [I/O Driver Settings] dialog box. |
| I/O Screen | Click the button to switch to the I/O screen. |

◆ I/O Driver Settings



| Setting | Description |
|-------------------------|---|
| Input | Select the variable type for the input from either [Bit] or [Word]. The Number of Points is 6 (fixed). |
| Output | Select the variable type for the output from either [Bit] or [Word]. The Number of Points is 2 (fixed). |
| Retentive Output | Select whether or not you want to retain output values when the logic is stopped. When this check box is selected, I/O values are retained even when the GP is shut down. |