

2



About GP-Pro EX

This chapter covers compatibility, project conversion, and how to find software and documentation updates. Compatibility and project conversion applies to projects moving from GP-Pro/PBIII to GP-Pro EX.

2.1	Compatibility with Pro-face® Software.....	2-2
2.2	How to Update Software	2-23

2.1 Compatibility with Pro-face® Software

This section describes how to operate the Project Converter, which converts Project Files (*.prw) created with the Pro-face GP-PRO/PBIII for Windows application into GP-Pro EX Project files (*.prx). This section also highlights important information regarding compatibility.

IMPORTANT

- For information on compatibility and restrictions between GP-PRO/PBIII for Windows and GP-Pro EX, refer to Pro-face Support Site "Otasuke Pro!".

URL <http://www.pro-face.com/otasuke/>

Click Me!

2.1.1 Compatible Software Versions

The Project Converter converts a data set subsidiary to project files (*.prw) created by GP-PRO/PBIII for Windows software Ver.1.0 to Ver.7.0.

IMPORTANT

- Project files (*.prw) created by GP-PRO/PBIII for Windows Ver.7.1 and Ver.7.2 are converted except the features added to each software version.

2.1.2 Model Names Before and After Conversion

After conversion, the [GP Type], which indicates the model name in the GP-PRO/PBIII for Windows project file (*.prw), in GP-Pro EX is referred to as [Display Type]. The model name may also change. The compatible models include GP70/77R/2000 Series, GLC Series, LT Series, and ST400 Series.

IMPORTANT

- Not compatible with Factory Gateway.
- For project files created by GP-PRO, GP-PROII, GP-PROIII, GP-PRO/PBIII (DOS), and Parts Box convert the screen data into *.prw in GP-PRO/PBIII for Windows and then execute the GP-Pro EX's project converter.
 - ☞ GP-PRO/PBIII for Windows Operation Manual "Chapter 12 Using Conventional Data"

■ GP70/77R Series

Convert From			Convert-To	
Series Name	Type	GP Type	Display Unit	
GP70 Series	GP-H70 Series	GPH70-LG11-24V	GPH70L	AGP-3300HL
		GPH70-LG41-24VP		
		GPH70-SC11-24V	GPH70S	AGP-3300HS
		GPH70-SC41-24VP		
	GP-270 Series	GP270-LG11-24V	GP270L	AST3301B/ AGP-3301L*1
		GP270-LG21-24VP		
		GP270-LG31-24V		
		GP270-SC11-24V	GP270S	AST3301S/ AGP-3301S*1
		GP270-SC21-24VP		
		GP270-SC31-24V		
	GP-370 Series	GP370-LG11-24V	GP370L	AST3301B/ AGP-3301L*1
		GP370-LG21-24VP		
		GP370-LG31-24V		
		GP370-LG41-24VP	GP370S	AST3301S/ AGP-3301S*1
		GP370-SC11-24V		
		GP370-SC21-24VP		
		GP370-SC31-24V		
		GP370-SC41-24VP		
	GP-470 Series	GP470-EG11	GP470	AST3501C/ AGP-3500T*1*2
		GP470-EG21-24VP		
		GP470-EG31-24V		
	GP-570 Series	GP570-SC11	GP570	AST3501T/ AGP-3500T*1
		GP570-SC21-24VP		
		GP570-SC31-24V		
		GP570-TC11		
		GP570-TC21-24VP		
		GP570-TC31-24V		
		GP570-LG11-24V	GP570L	AGP-3500L
GP570-LG21-24V				
GP570-TV11		GP570VM	AST3501T/ AGP-3500T*1*3	
GP-571 Series		GP571-TC11	GP571T	AST-3501T AGP-3500T*1
GP-675 Series	GP675-SC11	GP675	AGP-3600T	
	GP675-TC11			
	GP675-TC41-24VP			
GP-870 Series	GP870-PV11	GP870VM	AGP-3500T*3	
GP-377 Series	GP377-LG11-24V	GP377L	AST3301B/ AGP-3300L*1	
	GP377-LG41-24V			
	GP377-SC11-24V	GP377S	AST3301S/ AGP-3300S*1	
	GP377-SC41-24V			
	GP37W2-BG41-24V	GP37W2	AST-3301B/ AGP-3302B*1	
	GP37WL-LG11-24V	GP37WL	AST-3301B/ AGP-3302B*1	

Continued

GP77R Series	GP-377R Series	GP377R-TC11-24V	GP377R	AGP-3300T	
		GP377R-TC41-24V			
	GP-477R Series	GP477R-EG11	GP477R	AST3501C/ AGP-3500T*1	
		GP477R-EG41-24VP			
	GP-577R Series	GP577R Series	GP577R-SC11	GP577R	AST3501T/ AGP-3500T*1
			GP577R-SC41-24VP		
GP577R-TC11					
GP577R-TC41-24VP					

- *1 Available models may vary depending on your location. Please contact your closest Pro-face office or local distributor for more information.
- *2 Conversion changes the display to a 640x480 (VGA) resolution.
- *3 The video window display feature (V-tag) is not converted.

■ GP2000 Series

		Convert From			Convert-To
Series Name		Type	GP Type	Display Unit	
GP2000 Series	GP2000H Series	GP-2301H Series	GP2301H-LG41-24V	GP2301HL	AGP-3300HL*1
			GP2301H-SC41-24V	GP2301HS	AGP-3300HS*1
		GP-2401H Series	GP2401H-TC41-24V	GP2401H	AGP-3310HT*1*2
	GP-2300 Series	GP2300-LG41-24V	GP2300L	AGP-3300L	
		GP2300-TC41-24V	GP2300	AGP-3300T	
		GP2300-SC41-24V	GP2300S	AGP-3300S	
	GP-2301 Series	GP2301-LG41-24V	GP2301L	AST-3301B/ AGP-3301L*3	
		GP2301-SC41-24V	GP2301S	AST-3301S/ AGP-3301S*3	
		GP2301-TC41-24V	GP2301	AST3301S/ AGP-3301S*3	
	GP-2400 Series	GP2400-TC41-24V	GP2400	AGP-3400T	
	GP-2401 Series	GP2401-TC41-24V	GP2401	AST-3401T/ AGP-3400S*3	
	GP-2500 Series	GP2500-TC11	GP2500	AGP-3500T*4	
		GP2500-TC41-24V			
		GP2500-LG41-24V	GP2500L	AGP-3500L	
		GP2501-LG41-24V	GP2501L	AGP-3500L	
	GP-2501 Series	GP2501-SC11	GP2501S	AST-3501C/ AGP-3500S*3	
		GP2501-TC11	GP2501	AST-3501T/ AGP-3500T*3	
	GP-2600 Series	GP2600-TC11	GP2600	AGP-3600T*4	
		GP2600-TC41-24V			
	GP-2601 Series	GP2601-TC11	GP2601	AGP-3600T	

- *1 The GP2000H series vibration function cannot be changed.
- *2 The function switch's F9 to F13 keys are converted to F7 to F11 keys. F7, F8, F14, and F15 keys can be converted to switches outside the screen border.
- *3 Available models may vary depending on your location. Please contact your closest Pro-face office or local distributor for more information.
- *4 The video window display feature (V-tag) is not converted.

■ **GLC Series**

Convert From		Convert-To	
Series Name	Type	Display Unit	
GLC Series	GLC100S Series	GLC100-SC41-24V	AGP-3300S-FN1M
	GLC100L Series	GLC100-LG41-24V	AGP-3300L-FN1M
	GLC300T Series	GLC300-TC41-24V	AGP-3500T-FN1M
	GLC2300L Series	GLC2300-LG41-24V	AGP-3300L-FN1M
	GLC2300 Series	GLC2300-TC41-24V	AGP-3300T-FN1M
	GLC2400 Series	GLC2400-TC41-24V	AGP-3400T-FN1M
	GLC2500 Series	GLC2500-TC41-24V	AGP-3500T-FN1M
		GLC2500-TC41-200V	
GLC2600 Series	GLC2600-TC41-24V	AGP-3600T-FN1M	
	GLC2600-TC41-200V		

■ **LT Series**

Convert From		Convert-To	
Series Name	Type	Display Unit	
LT Series	LT TypeA	GLC150-BG41-XY32SK-24V	LT-3301L
		GLC150-BG41-XY32SC-24V	
	LT TypeB/B+	GLC150-BG41-FLEX-24V GLC150-BG41-XY32KF-24V	
	LT TypeC	GLC150-BG41-RSFL-24V	
	LT TypeH	GLC150-BG41-ADK-24V	
		GLC150-BG41-ADTK-24V	
		GLC150-BG41-ADPK-24V	
GLC150-BG41-ADC-24V GLC150-BG41-ADTC-24V GLC150-BG41-ADPC-24V			
LTC TypeA	GLC150-SC41-XY32SK-24V	LT-3300S	
LTC TypeB+	GLC150-SC41-XY32KF-24V		
LTC TypeH	GLC150-SC41-ADK-24V		
	GLC150-SC41-ADTK-24V GLC150-SC41-ADPK-24V		

NOTE

- You cannot convert FlexNetwork I/O settings. (For the LT TypeB+ display unit's S-NO.1, you can convert 16 points of inputs and outputs.)
- To convert a project (*.lte) from the LT editor, in GP-PRO/PBIII save it as a *.prw file to enable conversion.

■ **ST400 Series**

Convert From			Convert-To
Series Name	Type	GP Type	Display Unit
ST400 Series	ST400	ST400-AG41-24V	AST-3201A
	ST401	ST401-AG41-24V	
	ST402	ST402-AG41-24V	AST-3211A
	ST403	ST403-AG41-24V	AGP-3200A

NOTE

- Logic data, sound data, and video screens, as well as the ST400 Series function key settings, cannot be converted.
 - The backlight 2-color change function on the ST403 can be converted to AGP-3200A.
-

2.1.3 Devices before and after Conversion

The [Device/PLC] name on the project file (*.prw) created in GP-PRO/PBIII for Windows is changed after conversion. Be aware that some devices/PLCs cannot be converted.

IMPORTANT

- After conversion, the name of the GP Type is also changed.
 - ☞ "2.1.2 Model Names Before and After Conversion" (page 2-2)
- For project files created by GP-PRO, GP-PROII, GP-PROIII, GP-PRO/PBIII (DOS), and Parts Box convert the screen data into *.prw in GP-PRO/PBIII for Windows and then execute the GP-Pro EX's project converter.
 - ☞ GP-PRO/PBIII for Windows Operation Manual "Chapter 12 Using Conventional Data"

Displays up to GP-PRO/PBIII for Windows Ver.7.0		GP-Pro EX Display	
Maker	Device/PLC Name	Maker	Device/PLC Name
Digital Electronics Corporation of Japan	Memory Link SIO Type	Digital Electronics Corporation of Japan	Memory Link
	Memory Link Ethernet Type		
Mitsubishi Electric Corporation	Mitsubishi Electric MELSEC-AnN (LINK)	Mitsubishi Electric Corporation	A Series Calculator Link
	MITSUBISHI MELSEC-AnN (CPU)		A Series CPU Direct
	MITSUBISHI MELSEC-AnA (LINK)		A Series Calculator Link
	MITSUBISHI MELSEC-AnA (CPU)		A Series CPU Direct
	MITSUBISHI MELSEC-A (JPCN1)		Not converted
	MITSUBISHI MELSEC-A (ETHER)		A Series Ethernet
	MITSUBISHI MELSEC-F2 SERIES		Not converted
	MITSUBISHI MELSEC-FX (CPU)		FX Series CPU Direct
	MITSUBISHI MELSEC-FX 2 (LINK)		FX Series Calculator Link
	MITSUBISHI MELSEC-FX (CPU2)		FX Series CPU Direct
	MITSUBISHI MELSEC-FX 1:N Comm.		FX Series Calculator Link
	Mitsubishi Electric MELSEC-QnA (LINK)		Q/QnA Serial Communication
	Mitsubishi Electric MELSEC-QnA (CPU)		QnA Series CPU Direct
	Mitsubishi Electric MELSEC-Q (CPU)		Q series CPU Direct
	Mitsubishi Electric MELSEC-QUTE (CPU)		QUTE Series CPU Direct
	Mitsubishi Electric MELSEC-Q (ETHER)		Q/QnA Series Ethernet
	MITSUBISHI MELSECNET/10		Not converted
	MITSUBISHI FREQROL Series		
MITSUBISHI CC-Link Type	CC-Link Partner Association	CC-Link Intelligent Device	
MITSUBISHI CC-Link Intelligent Device			

Continued

Displays up to GP-PRO/PBIII for Windows Ver.7.0		GP-Pro EX Display	
Maker	Device/PLC Name	Maker	Device/PLC Name
Omron Corporation	OMRON SYSMAC-C SERIES	Omron Corporation	C/CV Series Upper Link
	OMRON SYSMAC-C 1:n Comm.		
	OMRON SYSMAC-CV SERIES		CS/CJ Series Upper Link
	OMRON SYSMAC-CS1 SERIES		CS/CJ Series Ethernet
	OMRON SYSMAC-CS1 (ETHER)		Adjuster CompoWay/F
	OMRON THERMAC NEO Series		
Sharp Corporation	SHARP New Satellite JW SERIES	Sharp MS Corporation	JW Series Computer Link SIO
Yokogawa Electric Corporation	YOKOGAWA FACTORY ACE 1:1 Comm.	Yokogawa Electric Corporation	PC link SIO
	YOKOGAWA FACTORY ACE 1:n Comm.		
	Yokogawa Electric Corporation FA-M3 (ETHER)		PC link Ethernet
	Yokogawa Electric Corporation FCN/FCJ Modbus RTU 1:n		Not converted
Fuji Electric Corporation	Fuji Electric FA Components & Systems Co., Ltd. MICREX-F Series	Fuji Electric FA Components & Systems Co., Ltd.	MICREX-F series SIO
	Fuji Electric FA Components & Systems Co., Ltd. MICREX-F Series (T Link)		Not converted
	Fuji Electric FA Components & Systems Co., Ltd. MICREX-F Series (FLT)		
	Fuji Electric FA Components & Systems Co., Ltd. FLEX-PC (LINK)		
	Fuji Electric FA Components & Systems Co., Ltd. FLEX-PC (CPU)		
	FUJI MICREX-SX SERIES		MICREX-SX Series SIO
	FUJI Inverter		Not converted
	TEMPERATURE PXR		
Toyoda Machine Works, Ltd.	TOYODA TOYOPUC-PC2 SERIES	JTEKT Corporation	TOYOPUC CMP-LINK SIO
	TOYODA TOYOPUC-PC2 1:n Comm.		
	TOYODA TOYOPUC-PC3J SERIES		
	TOYODA TOYOPUC-PC3J 1:n Comm.		
Yaskawa Electric Corporation	YASKAWA Memocon-SC SERIES	Yaskawa Electric Corporation	MEMOBUS SIO
	YASKAWA GL120/130 SERIES		Not converted
	YASKAWA PROGIC8 SERIES		MEMOBUS SIO
	YASKAWA MP2000/MP900/CP9200SH		MEMOBUS Ethernet
	YASKAWA MP2000/MP920 (ETHER)		Not converted
	YASKAWA Inverter		
	YASKAWA MP Panel SERIES		

Continued

Displays up to GP-PRO/PBIII for Windows Ver.7.0		GP-Pro EX Display	
Maker	Device/PLC Name	Maker	Device/PLC Name
Hitachi Ltd.	HITACHI HIDIC-S10 (JPCN/1)	Hitachi Ltd.	Not converted
	HITACHI HIZAC-EC SERIES		S10V Series Ethernet
	HITACHI S10V Series (ETHER)		Hitachi S10 series SIO
	HITACHI HIDIC-S10 a SERIES		
Hitachi Industrial Equipment Systems Co., Ltd. System	HITACHI IES HIDIC-H SERIES	Hitachi Industrial Equipment Systems Co., Ltd.	H Series SIO
	HITACHI IES HIDIC-H2 SERIES		H Series Ethernet
	Hitachi Industrial Equipment Systems Co.,Ltd. HIDIC H (ETHER)		Not converted
	HITACHI IES SJ300/L300P SERIES		
Toshiba Corporation	TOSHIBA PROSEC-EX2000 SERIES	Toshiba Corporation	Computer Link SIO
	TOSHIBA PROSEC-T SERIES		Not converted
	TOSHIBA PROSEC-T (ETHER)		Computer Link Ethernet
	TOSHIBA PROSEC-T (ETHER)		
Matsushita Electric Works, Ltd.	MATSUSHITA Electric Works MEWNET-FP SERIES	Matsushita Electric Works, Ltd.	FP series PC link SIO
Koyo Electronics Industries Co., Ltd.	KOYO ELECTRONICS KOSTAC-SG8 SERIES	Koyo Electronics Industries Co., Ltd.	KOSTAC/DL Series CCM SIO
	KOYO ELECTRONICS KOSTAC-SR21/22 SERIES		
	KOYO ELECTRONICS DL205/405 SERIES		
	KOYO ELECTRONICS DL305 SERIES		
Toshiba Machine Co., Ltd.	TOSHIBA MACHINE TC200 SERIES	Toshiba Machine Co., Ltd.	PROVISOR TC200
	TOSHIBA MACHINE TC200-S SERIES		
GE Fanuc Automation	GE Fanuc SERIES 90 SNP-X	GE Fanuc Automation	Series 90-30/70 SNP-X
	GE Fanuc SERIES 90-30/70 SNP		Series 90-30/70 SNP
	GE Fanuc SERIES S90-30/70 (ETHER)		Series90 Ethernet
FANUC Ltd.	FANUC Power Mate SERIES	FANUC Ltd.	Power mate
IDEC IZUMI Corporation	IDEC IZUMI IDEC_1		Not converted
	IDEC IZUMI IDEC_2		
	IDEC IZUMI IDEC_3		
	IDEC IZUMI MICRO3		
	IDEC IZUMI FC3/FC4A Series		

Continued

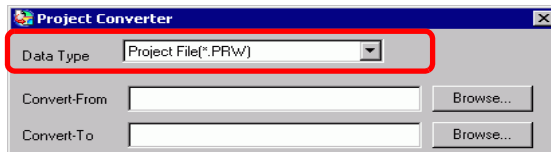
Displays up to GP-PRO/PBIII for Windows Ver.7.0		GP-Pro EX Display	
Maker	Device/PLC Name	Maker	Device/PLC Name
Siemens AG	SIEMENS S5 90-115 SERIES	Siemens AG	SIMATIC S5CPU Direct
	SIEMENS S5 135-155 SERIES		Not converted
	SIEMENS S5 3964 (R)		
	SIEMENS S7 200 PPI		SIMATIC S7 MPI Direct
	SIEMENS S7 200 via MPI		
	SIEMENS S7 300/400 via MPI		SIMATIC S7 3964(R)/RK512
	SIMATIC S7 via 3964/RK512		
	SIEMENS S7 via 300/400 Ethernet		SIMATIC S7 Ethernet
	SIMATIC 545/555 CPU		Not converted
Rockwell (Allen-Bradley)	Allen Bradley PLC-5	Rockwell Automation, Inc.	DF1
	Allen Bradley SLC500 Series		
	Allen Bradley Control Logix DF1		Not converted
	AB Data Highway Plus		
	AB SLC500 DH485		DH-485
	AB Remote I/O		Not converted
	Allen Bradley SLC5/05 (ETHER)		
	Allen Bradley Control Logix (EtherNet/IP)		EtherNet/IP
Keyence	KEYENCE KZ-300 Series	Keyence	Not converted
	KEYENCE KZ-A500 SERIES (CPU)		
	KEYENCE KZ-A500 SERIES (LINK)		
	KEYENCE KZ-10_80R/T SERIES		KV-700/1000 Series CPU Direct
	KEYENCE KZ-700/1000 (CPU)		
	KEYENCE KV-10_40A/D SERIES		
Shinko Electric Co. Ltd.	SHINKO ELECTRIC SELMART SERIES	Not converted	
Matsushita Electric Industrial Co., Ltd.	Matsushita Electric Industrial Panadac-7000 Series	Not converted	
	Matsushita Electric Industrial MINAS-A/S Series		
Modicon Corp.	Modicon Modbus (Master)	Schneider Electric Industries	MODBUS SIO Master
	Modicon Modbus (Slave)		MODBUS Slave
	Modicon Modbus Plus		MODBUS PLUS
FATEK	FATEK FACON FB	FATEK AUTOMATION Corporation	FB Series SIO
Orimvexta Co., Ltd	ORIM VEXTA E1 SERIES	Not converted	
PROFIBUS	PROFIBUS-DP	PROFIBUS International	PROFIBUS DP Slave
Device Net	Device Net Slave I/O	ODVA	Device Net Slave
INTERBUS	INTERBUS-SLAVE	Not converted	
JPCN-1	JPCN/1 (Standard)	Not converted	

Continued

Displays up to GP-PRO/PBIII for Windows Ver.7.0		GP-Pro EX Display	
Maker	Device/PLC Name	Maker	Device/PLC Name
Yamatake Corporation	Yamatake Temperature Controller SDC Series	Yamatake Corporation	Digital Controller SIO
RKC Instrument Inc.	RKC INSTRUMENT CB/SR-Mini (MODBUS)	RKC Instrument Inc.	Controller MODBUS SIO
	RKC INSTRUMENT CB/REX-F/LE100 (RKC)		Controller RKC SIO
Shinko Technos Co., Ltd.	Shinko Technos Controller	Shinko Technos Co., Ltd.	Controller SIO
TOHO Electronics Co., Ltd.	Controller TTM Series		Not converted
FENWAL CONTROLS OF JAPAN, LTD.	Fenwal AL Series		Not converted
JT Engineering Inc.	JTE Analyzer		Not converted
Meidensha Corporation	Meidensha Corporation Ethernet	Meidensha Corporation	UNISEQUE SERIES Ethernet
Shimaden Co., Ltd.	SHIMADEN Control Device		Not converted
CHINO Corporation	CHINO Controller (MODBUS)	CHINO Corporation	Controller MODBUS SIO
Schneider Electric	Schneider TSX via Uni-Telway	Schneider Electric Industries	Uni-Telway
	Schneider Modbus RTU 1:n		MODBUS SIO Master
	Schneider Modbus TCP (ETHER)		MODBUS TCP Master
Toshiba Schneider Inverter Corporation	Toshiba Schneider Inverter		Not converted
Ubon	UbonUPZ Series		Not converted
HIOKI E.E. Corporation	HIOKI E.E. Smart Site (MODBUS TCP)		Not converted

2.1.4 Using the Project Converter

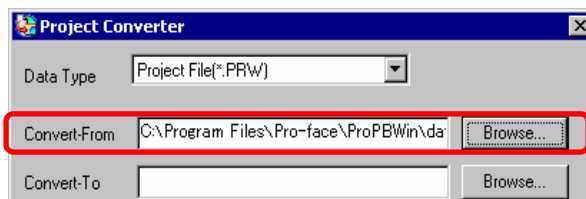
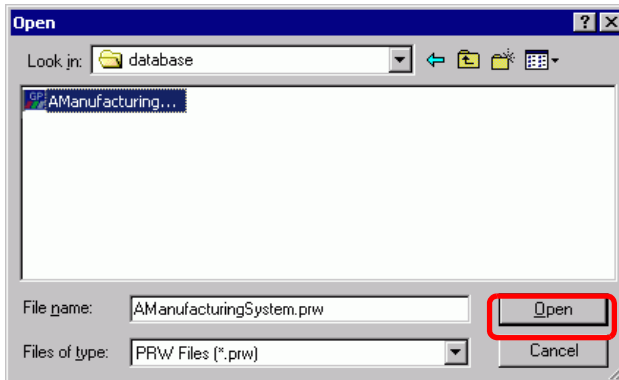
- 1 From the task bar, click [Start], point to [Programs (P)]. On Windows XP point to [All Programs (P)], [Pro-face], [GP-Pro EX *.*] (*.** is the version number), and then click [Project Converter].
- 2 The Project Converter window opens and the [Project Converter] dialog box appears. In the [Project File *.PRW)] list, define the type of project that will be selected in the [Convert-From] field.




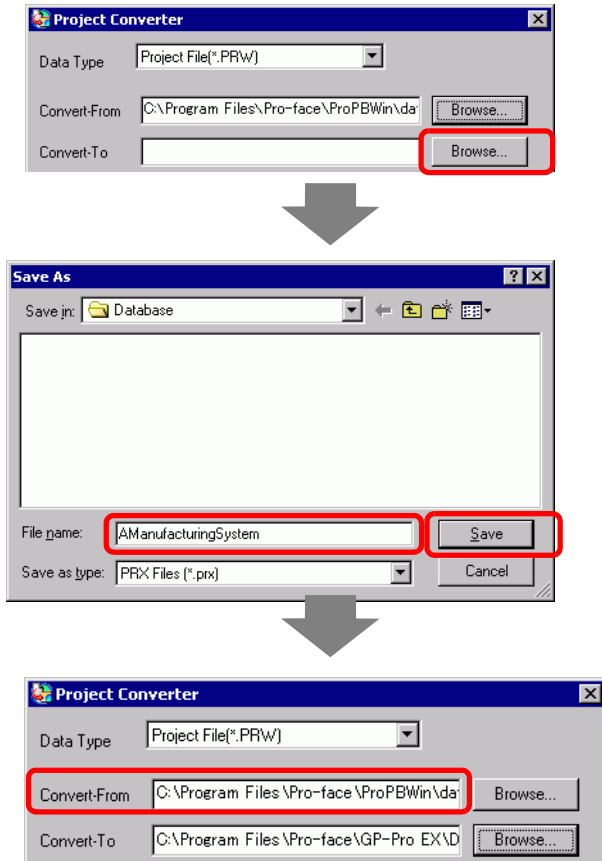
NOTE

- To convert the files in the [Pro-Control Editor], select [Logic File(*.wll)]. To convert partial program files (*.wlp) or subroutine program files (*.wlf), you need to save the files in Project File format (*.prw) with GP-PRO/PBIII then open them in the Project Converter.
- To convert a project (*.lte) from the LT editor, in GP-PRO/PBIII save it as a *.prw file to enable conversion.

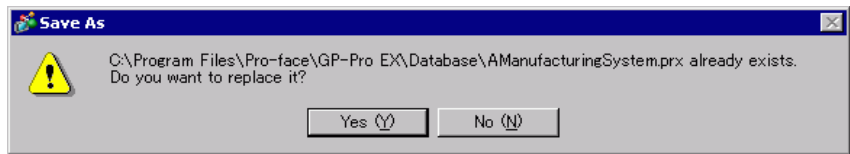
- 3 Designate a GP-PRO/PBIII for Windows project file (*.prw) in [Convert-From]. [Click the [Browse] button to select the project (for example, "AManufacturing System.prw"), and then click [Open (O)]. The selected file is set to [Convert-From].




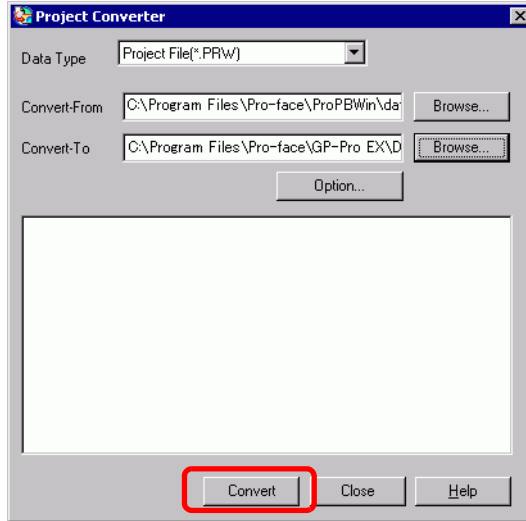
4 In [Convert-To], designate a GP-Pro EX project file (*.prx). Click the [Browse] button, input a new [File name] (For example "AManufacturingSystem.prx"), and click . A new project file name is set to [Convert-To].




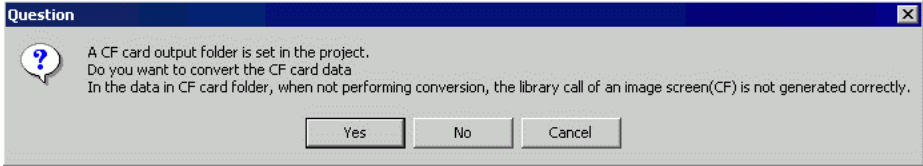
NOTE • If a [Convert-To] file already exists, you are prompted to keep or overwrite this file.






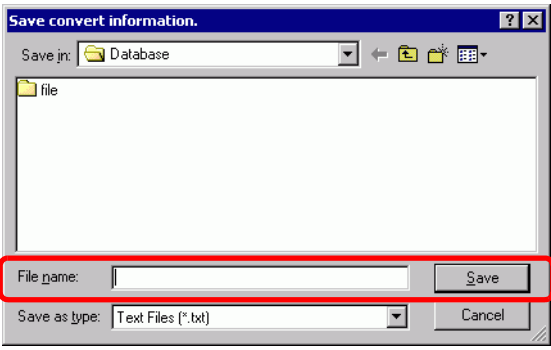
5  Click the icon to start the conversion.

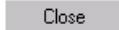


- NOTE**
- Depending on model you are converting from, the [Convert-From Type] dialog box may display where you can select the type and model.
 - When the following dialog box appears, set the CF Card folder.
 ■ Converting the Destination in the GP-PRO/PBIII for Windows "CF Card Data Output Folder" (page 2-15)



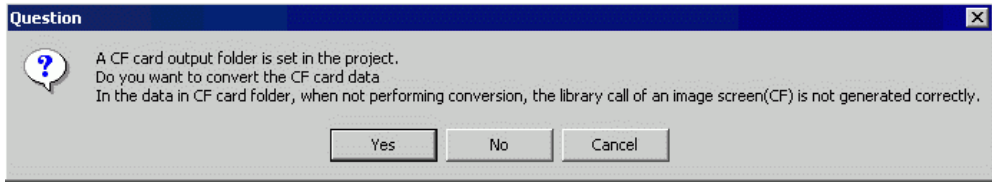
6 After conversion, the [Save As] dialog box appears. If you click , you can save the conversion information in a text file. To save the file, enter a [File name (N)] and click . If you click , you return to the [Project Converter] dialog box without saving the conversion information in the text file.



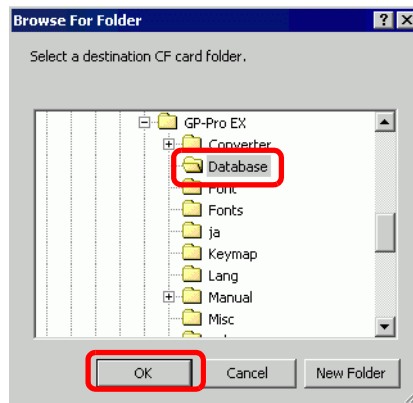
7 Click  to close the [Project Converter] dialog box.

■ Converting the Destination in the GP-PRO/PBIII for Windows "CF Card Data Output Folder"

When converting a project file (*.prw) that designates the CF Card Data Destination Folder in Procedure 5 described above, you are prompted to designate the CF Card Data Destination Folder in Convert Destination as well. To convert the folder, click [Yes].



Select the appropriate folder (for example, "Database") and click [OK].
[New Folder] can also be used to create a reference folder in any location.



IMPORTANT

- You always need to select [Yes] to convert the CF Card Data Destination Folder in the [Question] dialog box. If you select [No], called images may not be properly displayed.

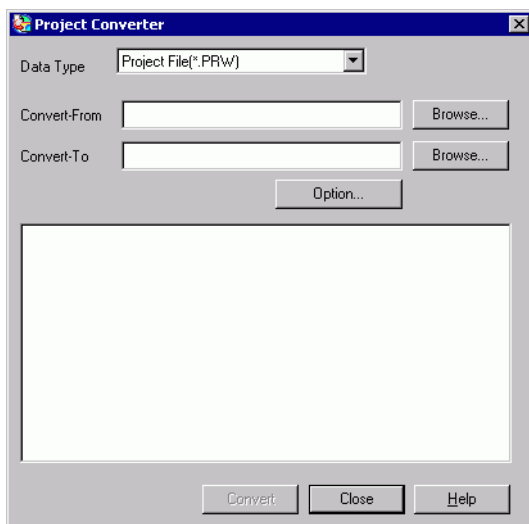
2.1.5 Setting up the Project Converter

The following describes how to convert files created in GP-PRO/PBIII for Windows, Pro-Control, and LogiTouch into GP-Pro EX project files.

IMPORTANT

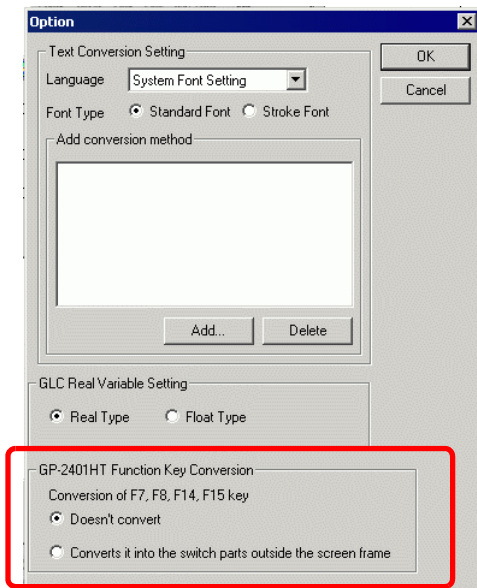
- GP-Pro EX data cannot be converted into GP-PRO/PBIII for Windows, Pro-Control, or LogiTouch files.

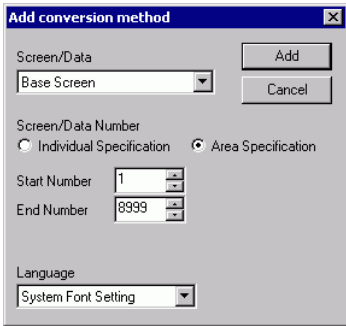
■ Project Converter



Setting	Description
Convert-From Type	Select the type of file to convert: [Project File], [Parts File], [CF Card Data] or [Logic File].
Convert From	Click the [Browse] button to select the file you want to convert. NOTE • If [CF Card Data] is selected in the [Data Type] drop-down list, you need to set up the CF card destination folder. ☞ " ■ Converting the Destination in the GP-PRO/PBIII for Windows "CF Card Data Output Folder"" (page 2-15)
Convert-To	Click the [Browse] button to select the destination folder for the converted project file. NOTE • If [CF Card Data] is selected in the [Data Type] drop-down list, you need to set up the CF card destination folder. ☞ " ■ Converting the Destination in the GP-PRO/PBIII for Windows "CF Card Data Output Folder"" (page 2-15)
Option	The [Options] dialog box appears. ☞ " ◆ Option" (page 2-17)

◆ Option



Setting	Description
Text Conversion Settings	Set up the screens and data for conversion individually.
Base Language	Select the base language for conversion from [System Font], [English], [Korean], [Chinese (Traditional)], [Chinese (Simplified)] or [Japanese].
Font Type	Select [Standard Font] or [Stroke Font].
Add Conversion Method	<p>Click Add. The [Add conversion method] dialog box appears.</p>  <p>NOTE</p> <ul style="list-style-type: none"> To delete the settings, select the item listed in [Add conversion method] and click [Delete].
Screen/Data	Specify the screen or data you want to convert. Select from [Base Screen], [Mark Screen], [Line Graph Data], [Keypad Screen], [Text Screen], [Window Screen], [Image Screen], [Sound], [Global D-Script], [Extended SIO Script], [D-Script Function], [Data Sampling], [Filing Data], [Log Settings], [CSV Data Transfer Feature], [Alarm Message/Summary], [Bit Log Alarm], [Word Log Alarm] or [Logic Data].

Continued

Setting		Description
Text Conversion Settings	Add Conversion Method	
	Screen/Data Number	<ul style="list-style-type: none"> Individual Specification Specify the number of the screen or data you want to convert. Area Specification Specify the [Start] and the [End Number] of the screen or data you want to convert from 1 to 8999.
	Language	Select from [System Font], [English], [Korean], [Chinese (Traditional)], [Chinese (Simplified)] or [Japanese].
GLC Variable Conversion Settings		Select [Real Variable] or [Float Variable].
GP-2401HT Function Key Conversion		When Convert-From is GP-2401HT, define whether to [Not Convert] F7, F8, F14, and F15 keys, or to [Convert to switch parts outside of screen border].

2.1.6 Error Message

If you encounter any messages during project conversion, look them up here.

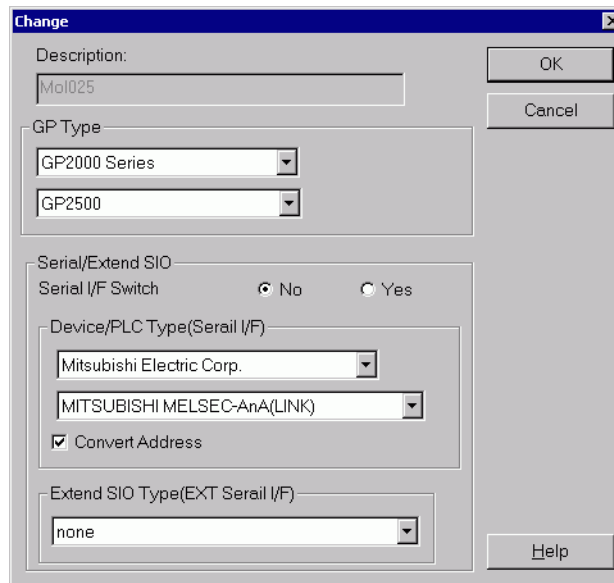
The selected Device/PLC is unavailable for conversion. Convert after you change the device/PLC.

The selected Device/PLC is not supported by GP-Pro EX. Please select a Device/PLC that is supported by GP-Pro EX in GP-PRO/PBIII for Windows and run the Project Converter again. For devices/PLCs supported by GP-Pro EX, see "2.1.3 Devices before and after Conversion" (page 2-7).

- To change [Device/PLC] in GP-PRO/PBIII for Windows
 (1) Select the [Device/PLC] icon in GP-PRO/PBIII for Windows' Project Manager.



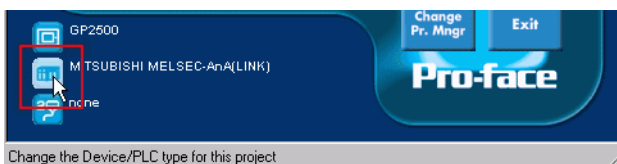
- (2) The [Change] dialog box appears. Select the [Device/PLC] you want to use. In addition, after you change the [Device/PLC Type], make sure to confirm the device address settings.



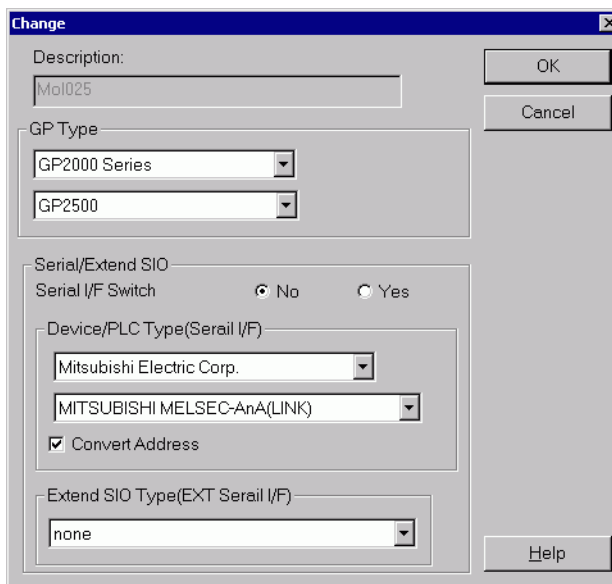
Cannot read the source Device/PLC file.

The source file's device/PLC type is unsupported. Open the project in GP-PRO/PBIII for Windows, select a Device/PLC that is supported by GP-Pro EX, and run the Project Converter again. For devices/PLCs supported by GP-Pro EX, see "2.1.3 Devices before and after Conversion" (page 2-7).

- To change [Device/PLC] in GP-PRO/PBIII for Windows
 (3) Select the [Device/PLC] icon in GP-PRO/PBIII for Windows' Project Manager.



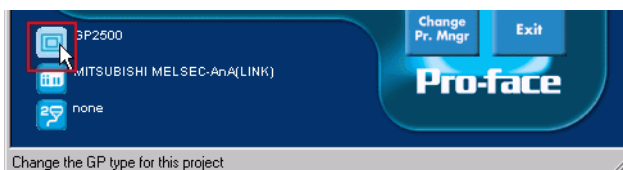
- (4) The [Change] dialog box appears. Select the [Device/PLC] you want to use. In addition, after you change the [Device/PLC Type], make sure to confirm the device address settings.



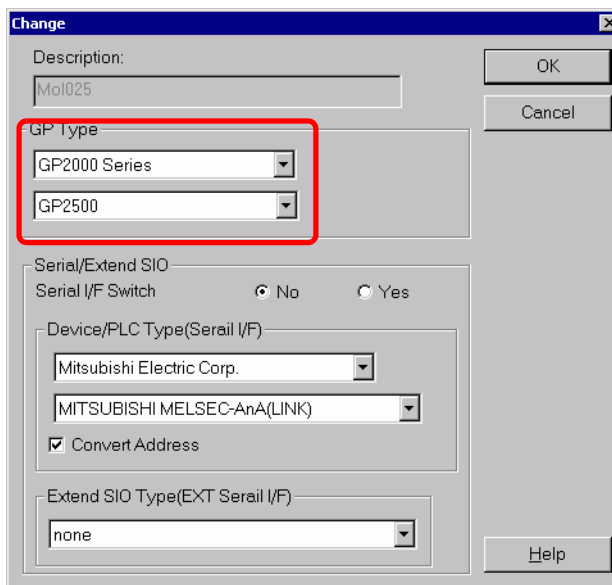
The selected model is unavailable for conversion. Change the model.

The selected Display Type is not supported by GP-Pro EX. Select a GP Type that is supported by GP-Pro EX in GP-PRO/PBIII for Windows and run the Project Converter again. For the models supported by GP-Pro EX, refer to "2.1.2 Model Names Before and After Conversion" (page 2-2)

- To change [GP Type] in GP-PRO/PBIII for Windows
 (5) Select the [GP Type] icon in GP-PRO/PBIII for Windows' Project Manager.



- (6) The [Change] dialog box appears. Select the [GP Type] you want to use. Be aware that the GP may have different features before and after conversion.



Cannot read the prw file.

Failed to read a GP-PRO/PBIII for Windows file (*.PRW). Microsoft Windows permissions may restrict access to the GP-PRO/PBIII for Windows file (*.PRW). Check the permissions in Windows Explorer.

Cannot access the parts file.

Failed to read a GP-PRO/PBIII for Windows' Part file (*.PDB or *.BPD). Microsoft Windows permissions may restrict access to the GP-PRO/PBIII for Windows' Part file (*.PDB or BPD). Check the permissions in Windows Explorer.

Invalid extension.

An incorrect extension is designated in Project Converter [Convert To]. Input a correct extension (*.prx).

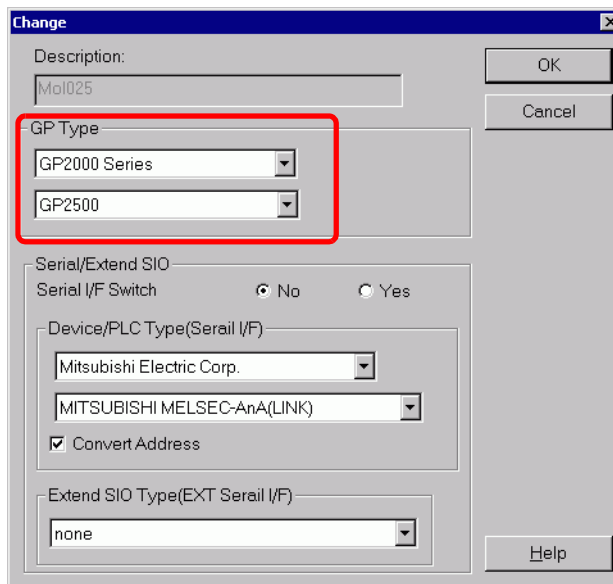
Cannot read the model information file.

The source GP model cannot be recognized. Select a GP Type that is supported by GP-Pro EX in GP-PRO/PBIII for Windows and run the Project Converter again. For the models supported by GP-Pro EX, refer to "2.1.2 Model Names Before and After Conversion" (page 2-2)

- To change [GP Type] in GP-PRO/PBIII for Windows
 (7) Select the [GP Type] icon in GP-PRO/PBIII for Windows' Project Manager.



- (8) The [Change] dialog box appears. Select the [GP Type] you want to use. Be aware that the GP may have different features before and after conversion.



Cannot read AGPCnv.cfg file.

Failed to load GP-Pro EX AGPCnv.cfg file. Install GP-Pro EX again.

2.2 How to Update Software

This section explains how to update GP-Pro EX. Apart from software, there are also update programs for manuals and drivers.

NOTE

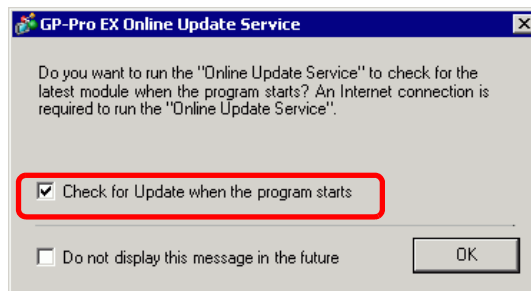
- To update GP-Pro EX, the Online Update Feature is used. An Internet connection is required.
- The steps below may change without notice.

2.2.1 Working with Online Update

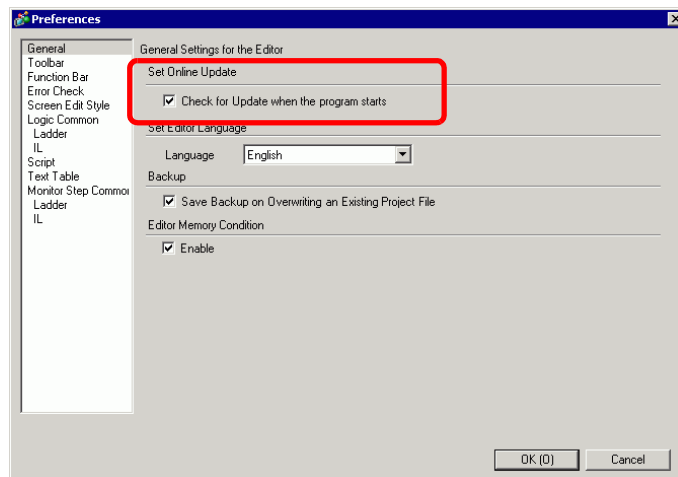
1 From the [Help (H)] menu, select [Confirm Update of GP-Pro EX (U)]

NOTE

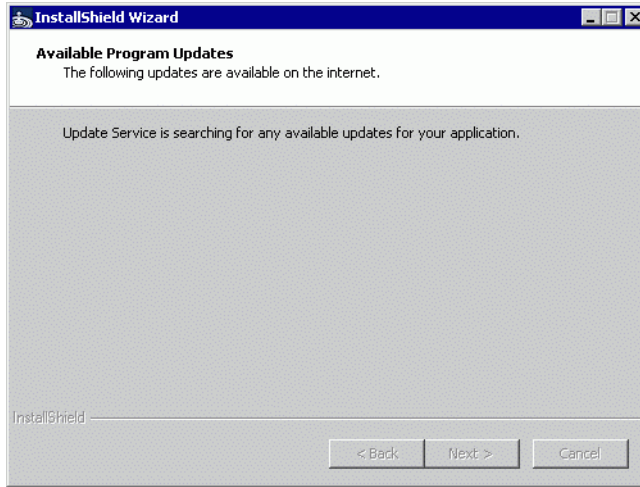
- When you launch GP-Pro EX, the following dialog box appears. To start the online update every time you launch GP-Pro EX, select the [Check for Update when the program starts] check box, then click [OK]. To receive updates as needed in manner of Procedure 1, clear the check box and click [OK].



Normally, for the automatic updates to start the online update every time you launch GP-Pro EX, you can set up the following: [View (V)] menu, click [Preferences (O)]. In the [General] page, select the [Check for Update when the program starts] check box. Click [OK].

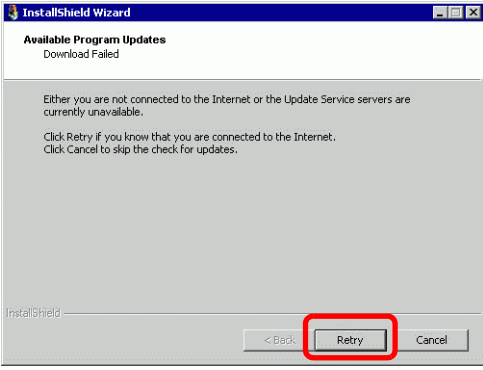


2 Search for programs on your computer that need updating over the Internet.

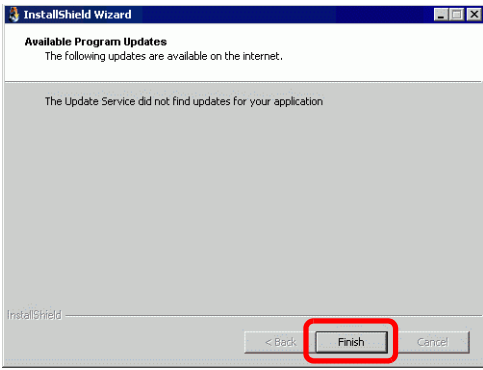


NOTE

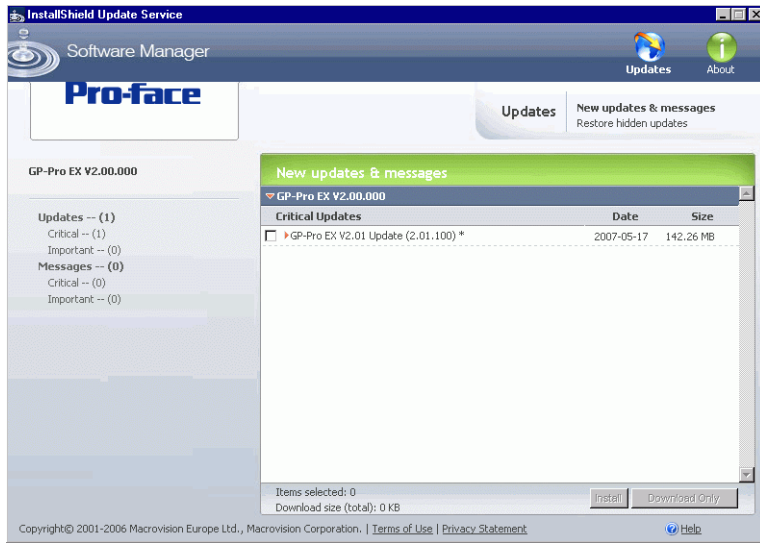
- If you do not have an Internet connection, the following error occurs. Once you are connected, click the [Retry] button. This is not displayed for Search when GP-Pro EX is launched.



- After searching, if there are no program updates, the following dialog box appears. [Finish] button allows you to complete the operation. This is not displayed for Search when GP-Pro EX is launched.



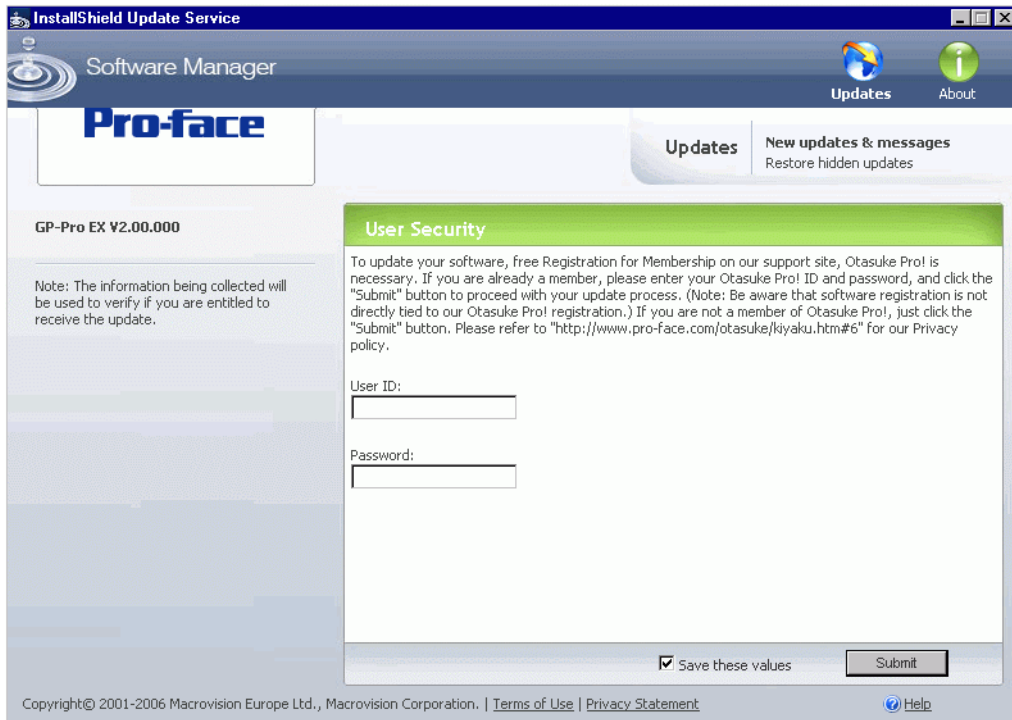
- 3 When the [Available Updates] window opens, confirm the program updates.
Select the items you want updated with the [Add] button, and click the [Next] button.

**NOTE**

- The previous [Available Updates] screen update item is an example. You can confirm the latest program updates on your computer.

[New update and message] screen appears, where you can confirm the programs to update. You can either install all selected items automatically ([Install] button) or install each item individually ([Download only] button).

- 4 [Install] or [Download only] buttons display on the [User Security] screen. Enter the [Otasuke ID] and [Password] and click the [Submit] button.



5 Start installation.

NOTE

- Install while the GP-Pro EX is off.

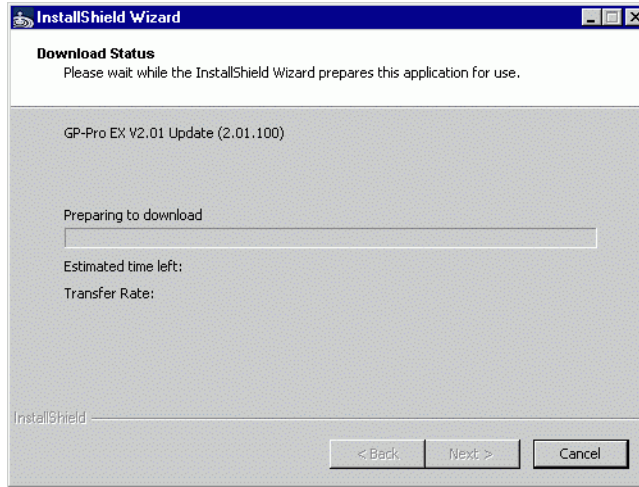
- Click the [Install] button.

All selected program updates start installing.

After downloading program updates is complete, click [Next] to begin the installation.

Follow the instructions in the wizard.

To cancel the installation, click the [Cancel] button.



- When clicking the [Download only] button

Downloads the selected program updates. [Download] button should be clicked, select the save location for program updates, and then click the [Save] button. Next, click the [Finish] button to complete the wizard. Click the saved update program (*.exe) to start installation.

6 The installation of product updates for the software is now complete.

When the installation of the manual product updates completes, [The setup was completed] message appears. Click [OK] to finish.

