

2



Using GP-Pro EX

This chapter explains about “Compatibility Information”, which is necessary to convert Pro-face’s GP-PRO/PBIII for Windows’ project files into GP-Pro EX’s files, “Project Converter Operation Method”, and the update method for the software and manuals.

2.1	About Compatibility with Pro-face® Software	2-2
2.2	How to Update Software	2-19

2.1 About Compatibility with Pro-face® Software

This chapter explains about necessary information to convert the project files (*.prw) created with Pro-face's GP-PRO/PBIII for Windows into the GP-Pro EX's project files (*.prw), and how to operate the Project Converter.

IMPORTANT

- For information on compatibility between GP-PRO/PBIII for Windows and GP-Pro EX and restrictions, also refer to GP-Pro EX Support Site "Otasuke Pro!".

URL <http://www.pro-face.com/otasuke/>

 Click Me!

2.1.1 Convertible Software Versions

Converts project files (*.prw) created by GP-PRO/PBIII for Windows software Ver.1.0 to Ver.7.0 and the accompanying data set.

IMPORTANT

- Project files (*.prw) created by GP-PRO/PB III for Windows Ver.7.1 and Ver.7.2 are converted except the features added to each software version.

2.1.2 List of GP Models before and after the Conversion

After conversion, [GP Type] (indicated Model Name) on a project file (*.prw) created by GP-PRO/PBIII for Windows is changed to [Display Type], and the model name is also changed.

Supported models are GP70/77R/2000 Series and ST400 Series.

IMPORTANT

- ST403/GLC/LT/Factory Gateway is not supported.
- For project files created by GP-PRO, GP-PROII, GP-PROIII, GP-PRO/PBIII (DOS), and Parts Box, convert the screen data into *.prw in GP-PRO/PBIII for Windows and then execute the GP-Pro EX's project converter.
 - ☞ GP-PRO/PBIII for Windows Operation Manual "Chapter 12 Using Conventional Data"

■ GP77/77R Series

Convert From			Convert To	
Series Name	Type	GP Type	Display Type	
GP70 Series	GP-H70 Series	GPH70-LG11-24V	GPH70L	AGP-3301L*1
		GPH70-LG41-24VP		
		GPH70-SC11-24V	GPH70S	
		GPH70-SC41-24VP		
	GP-270 Series	GP270-LG11-24V	GP270L	AGP-3301L
		GP270-LG21-24VP		
		GP270-LG31-24V		
		GP270-SC11-24V	GP270S	
		GP270-SC21-24VP		
		GP270-SC31-24V		
	GP-370 Series	GP370-LG11-24V	GP370L	AGP-3301L
		GP370-LG21-24VP		
		GP370-LG31-24V		
		GP370-LG41-24VP		
		GP370-SC11-24V	GP370S	
		GP370-SC21-24VP		
		GP370-SC31-24V		
		GP370-SC41-24VP		
	GP-470 Series	GP470-EG11	GP470	AGP-3500T*2
		GP470-EG21-24VP		
		GP470-EG31-24V		
	GP-570 Series	GP570-SC11	GP570	AGP-3500T
		GP570-SC21-24VP		
		GP570-SC31-24V		
		GP570-TC11		
		GP570-TC21-24VP		
		GP570-TC31-24V		
		GP570-TV11	GP570VM	
GP-571 Series	GP571-TC11	GP571IT	AGP-3500T	
GP-675 Series	GP675-SC11	GP675	AGP-3600T	
	GP675-TC11			
	GP675-TC41-24VP			
GP-870 Series	GP870-PV11	GP870VM	AGP-3500T*3	
GP-377 Series	GP377-LG11-24V	GP377L	AGP-3300L	
	GP377-LG41-24V			
	GP377-SC11-24V	GP377S		
	GP377-SC41-24V			
GP77R Series	GP-377R Series	GP377R-TC11-24V	GP377R	AGP-3300T
		GP377R-TC41-24V		
	GP-477R Series	GP477R-EG11	GP477R	
		GP477R-EG41-24VP		
	GP-577R Series	GP577R-SC11	GP577R	
		GP577R-SC41-24VP		
		GP577R-TC11		
		GP577R-TC41-24VP		

1 Handy type GP (.prw) is changed to project files for normal type GP (*.prx). Therefore Operation Switch and Function Switch's settings are not converted.

*2 If you force to convert it, the resolution will be changed to 640 x 480 (VGA) display type.

*3 The video window display feature (V-tag) is not converted.

■ GP2000 Series

Convert From			Convert To		
Series Name		Type	GP Type	Display Type	
GP2000 Series	GP2000H Series	GP-2301H Series	GP2301H-LG41-24V	GP2301HL	AGP-3301L *1*2
			GP2301H-SC41-24V	GP2301HS	AGP-3301S *1*2
		GP-2401H Series	GP2401H-TC41-24V	GP2401H	AGP-3400S *1*2
	GP-2300 Series	GP-2300 Series	GP2300-LG41-24V	GP2300L	AGP-3300L
			GP2300-TC41-24V	GP2300	AGP-3300T
		GP-2301 Series	GP2301-LG41-24V	GP2301L	AGP-3301L
			GP2301-SC41-24V	GP2301S	AGP-3301S
			GP2301-TC41-24V	GP2301	AGP-3301S
		GP-2400 Series	GP2400-TC41-24V	GP2400	AGP-3400T
		GP-2401 Series	GP2401-TC41-24V	GP2401	AGP-3400S
		GP-2500 Series	GP2500-TC11	GP2500	AGP-3500T*3
			GP2500-TC41-24V		
		GP-2501 Series	GP2501-SC11	GP2501S	AGP-3500S
	GP2501-TC11		GP2501	AGP-3500T	
GP-2600 Series	GP2600-TC11	GP2600	AGP-3600T*3		
	GP2600-TC41-24V				
GP-2601 Series	GP2601-TC11	GP2601	AGP-3600T		

1 The handy type GP are changed to the project files for normal type GP (.prx). Therefore the settings of the operation switch and the function switch' are not converted.

*2 You cannot change the GP2000H series-only vibration function.

*3 The video window display feature (V-tag) is not converted.

■ GLC Series

Convert From		Convert To	
Series Name	Type	Display Type	
GLC Series	GLC100S Series	GLC100-SC41-24V	AGP-3300S-FN1M
	GLC100L Series	GLC100-LG41-24V	AGP-3300L-FN1M
	GLC300 Series	GLC300-TC41-24V	AGP-3500T-FN1M
	GLC2300L Series	GLC2300-LG41-24V	AGP-3300L-FN1M
	GLC2300 Series	GLC2300-TC41-24V	AGP-3300T-FN1M
	GLC2400 Series	GLC2400-TC41-24V	AGP-3400T-FN1M
	GLC2500 Series	GLC2500-TC41-24V	AGP-3500T-FN1M
		GLC2500-TC41-200V	
	GLC2600 Series	GLC2600-TC41-24V	AGP-3600T-FN1M
GLC2600-TC41-200V			

■ ST400 Series

Convert From			Convert To	
Series Name	Type	GP Type	Display Type	
ST400 Series	ST400	ST400-AG41-24V	ST400	AGP-3302B*1
	ST401	ST401-AG41-24V	ST401	
	ST402	ST402-AG41-24V	ST402	
	ST403	ST403-AG41-24V	ST403	Not converted

*1 The Function Key's settings for ST400 Series are not converted.

2.1.3 List of Devices before and after the Conversion

After conversion, [Device/PLC Type] on a project file (*.prw) created by GP-PRO/PBIII for Windows is changed to another name. Some devices/PLCs are not converted.

IMPORTANT

- After conversion, the name of GP Type is also changed.
- ☞ “2.1.2 List of GP Models before and after the Conversion” (page 2-2)
- For project files created by GP-PRO, GP-PROII, GP-PROIII, GP-PRO/PBIII (DOS), and Parts Box, convert the screen data into *.prw in GP-PRO/PBIII for Windows and then execute the GP-Pro EX’s project converter.
- ☞ GP-PRO/PBIII for Windows Operation Manual “Chapter 12 Using Conventional Data”

Maker	Device/PLC Name for GP-PRO/PBIII for Windows Ver.7.0	Device/PLC Name for GP-Pro EX
Pro-face	Memory Link SIO Type	Memory Link
	Memory Link Ethernet Type	
Mitsubishi Electric Corporation	mitsubishi MELSEC-AnN (LINK)	A Series Computer Link
	mitsubishi MELSEC-AnN (CPU)	A Series CPU Direct
	mitsubishi MELSEC-AnA (LINK)	A Series Computer Link
	mitsubishi MELSEC-AnA (CPU)	A Series CPU Direct
	mitsubishi MELSEC-A (JPCN1)	Not converted
	mitsubishi MELSEC-A (ETHER)	A Series Ethernet
	mitsubishi MELSEC-F2 SERIES	Not converted
	mitsubishi MELSEC-FX (CPU)	FX Series CPU Direct
	mitsubishi MELSEC-FX 2 (LINK)	FX Series Computer Link
	mitsubishi MELSEC-FX (CPU2)	FX Series CPU Direct
	mitsubishi MELSEC-FX 1:n Comm.	FX Series Computer Link
	mitsubishi MELSEC-QnA (LINK)	Q/QnA Serial Communication
	mitsubishi MELSEC-QnA (CPU)	QnA Series CPU Direct
	mitsubishi MELSEC-Q (CPU)	Q Series CPU Direct
	mitsubishi MELSEC-QUTE (CPU)	QUTE Series Direct Connection to CPU
	mitsubishi MELSEC-Q (ETHER)	Q/QnA Series Ethernet
	Omron Corporation	OMRON SYSMAC-C SERIES
OMRON SYSMAC-C 1:n Comm.		
OMRON SYSMAC-CV SERIES		
OMRON SYSMAC-CS1 SERIES		CS/CJ Series HOST Link
OMRON SYSMAC-CS1 (ETHER)		CS/CJ Series Ethernet
Sharp Corporation	OMRON THERMAC NEO Series	ControllerCompoWay/F
	SHARP New Satellite JW SERIES	JW Series Computer Link
Yokogawa Electric Corporation	YOKOGAWA FACTORY ACE 1:1 Comm.	Personal Computer Link SIO
	YOKOGAWA FACTORY ACE 1:n Comm.	
	YOKOGAWA FA-M3 (ETHER)	Personal Computer Link Ethernet
	YOKOGAWA FCN/FCJ Modbus RTU 1:n	Not converted

Continued

Maker	Device/PLC Name for GP-PRO/PBIII for Windows Ver.7.0	Device/PLC Name for GP-Pro EX
Fuji Electric Corporation	FUJI MICREX-F SERIES	MICREX-F Series SIO
	FUJI MICREX-F SERIES (T-Link)	Not converted
	FUJI MICREX-F SERIES (FLT)	
	FUJI FLEX-PC (LINK)	
	FUJI FLEX-PC (CPU)	
	FUJI MICREX-SX SERIES	
	FUJI Inverter	
Toyoda Machine Works, Ltd.	TEMPERATURE PXR	TOYOPUC CMP-LINK SIO
	TOYODA TOYOPUC-PC2 SERIES	
	TOYODA TOYOPUC-PC2 1:n Comm.	
	TOYODA TOYOPUC-PC3J SERIES	
Yasukawa Electric Corporation	TOYODA TOYOPUC-PC3J 1:n Comm.	Not converted
	YASKAWA Memocon-SC SERIES	
	YASKAWA GL120/130 SERIES	
	YASKAWA PROGIC8 SERIES	MEMOBUS SIO
	YASKAWA MP2000/MP900/CP9200SH	MEMOBUS Ethernet
	YASKAWA MP2000/MP920 (ETHER)	Not converted
	YASKAWA Inverter	
YASKAWA MP Panel SERIES		
HITACHI HIDIC-S10 a SERIES		
Hitachi Ltd.	HITACHI HIDIC-S10 a (JPCN/1)	Not converted
	HITACHI HIZAC-EC SERIES	
	HITACHI S10V SERIES (ETHER)	
	HITACHI IES HIDIC-H SERIES	
Hitachi Industrial Equipment Systems Co., Ltd.	HITACHI IES HIDIC-H SERIES2	Not converted
	HITACHI IES HIDIC H (ETHER)	HIDIC HSERIES Ethernet
	HITACHI IES SJ300/L300P SERIES	Not converted
	TOSHIBA PROSEC-EX2000 SERIES	
TOSHIBA PROSEC-T SERIES		
Toshiba Corporation	TOSHIBA PROSEC-T (ETHER)	Not converted
	MATSUSHITA Electric Works MEWNET-FP SERIES	
Koyo Electronics Industries Co., Ltd.	KOYO ELECTRONICS KOSTAC-SG8 SERIES	Not converted
	KOYO ELECTRONICS KOSTAC-SR21/22 SERIES	
	KOYO ELECTRONICS DL205/405 SERIES	
	KOYO ELECTRONICS DL305 SERIES	
Toshiba Machine Co., Ltd.	TOSHIBA MACHINE TC200 SERIES	Not converted
	TOSHIBA MACHINE TC200-S SERIES	
GE FANUC Automation Corporation	GE Fanuc SERIES 90 SNP-X	Series 90-30/70 SNP-X
	GE Fanuc SERIES 90-30/70 SNP	Series 90-30/70 SNP
	GE Fanuc SERIES 90-30/70 (ETHER)	Series90 Ethernet

Continued

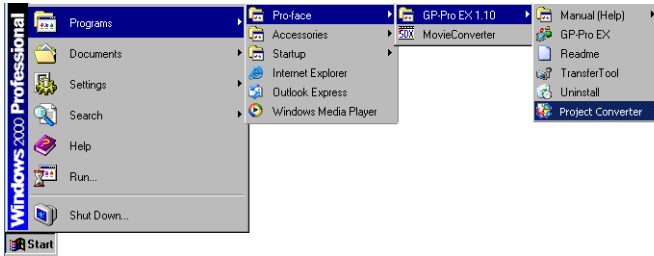
Maker	Device/PLC Name for GP-PRO/PBIII for Windows Ver.7.0	Device/PLC Name for GP-Pro EX
FANUC Ltd.	FANUC Power Mate SERIES	Not converted
IDEC IZUMI Corporation	IDEC IZUMI IDEC_1	
	IDEC IZUMI IDEC_2	
	IDEC IZUMI IDEC_3	
	IDEC IZUMI MICRO3	
SIEMENS	IDEC IZUMI FC3/FC4A Series	
	SIEMENS S5 90-115 SERIES	
	SIEMENS S5 135-155 SERIES	
	SIEMENS S5 3964 (R) Protocol	
	SIEMENS S7 200 PPI	
	SIEMENS S7 200 via MPI	
	SIEMENS S7 300/400 via MPI	SIMATIC S7 3964(R)/RK512
	SIMATIC S7 via 3964/RK512	SIMATIC S7 Ethernet/TCP
SIEMENS S7 via 300/400 Ethernet	Not converted	
SIMATIC 545/555 CPU		
Rockwell (Allen-Bradley)	Allen Bradley PLC-5	DF1
	Allen Bradley SLC5/03, SLC5/04	
	Allen Bradley Control Logix DF1	
	AB PLC-5 DataHighway+	Not converted
	AB SLC500 DH485	DH-485
	AB Remote I/O	Not converted
	Allen Bradley SLC505 Ethernet	EtherNet/IP
Allen Bradley Control Logix Ethernet		
Keyence	KEYENCE KZ-300 SERIES	Not converted
	KEYENCE KZ-A500 SERIES (CPU)	
	KEYENCE KZ-A500 SERIES	
	KEYENCE KV-10/16/24/40 SERIES	
	KEYENCE KV-10_80RW SERIES	KV-700/1000 Series CPU Direct
KEYENCE KV-700 SERIES (CPU)		
Shinko Electric Co. Ltd.	SHINKO ELECTRIC SELMART SERIES	Not converted
Matsushita Electric Industrial Co., Ltd.	Matsushita Electric Industrial Panadac-7000 Series	
	Matsushita Electric Industrial MINAS-A/S Series	
Modicon Corp.	Modicon Modbus Master	Schneider Electric MODBUS SIO Master
	Modicon Modbus (Slave)	Not converted
	Modicon Modbus (Plus)	
FATEK	FATEK FACON FB	Not converted
Orimvexta Co., Ltd	E1 SERIES	
PROFIBUS	PROFIBUS-DP	PROFIBUS DP Slave
Device Net	Device Net Slave I/O	Not converted
INTERBUS	INTERBUS-SLAVE	
JPCN/I	JPCN/I (Standard)	
Yamatake Corporation	Yamatake Temperature Controller SDC Series	Digital ControllerSIO
RKC Instrument Inc.	RKC INSTRUMENT CB/SR-Mini SERIES (MODBUS)	Controller MODBUS SIO
	RKC INSTRUMENT CB/REX-F/LE100 SERIES (RKC)	Ontroller RKC SIO

Continued

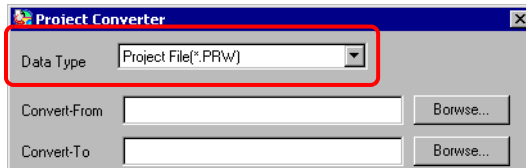
Maker	Device/PLC Name for GP-PRO/PBIII for Windows Ver.7.0	Device/PLC Name for GP-Pro EX
Shinko Technos Co., Ltd.	Shinko Technos Controller	Not converted
TOHO Electronics Co., Ltd.	Controller TTM Series	
FENWAL CONTROLS OF JAPAN, LTD.	Fenwal AL Series	
JT Engineering Inc.	JTE Analyzer	
Meidensha Corporation	MEIDENSHA (ETHERNET)	
Shimaden Co., Ltd.	SHIMADEN Control Device	
CHINO Corporation	CHINO Controller (MODBUS)	
Schneider Electric	Schneider TSX via Uni-Telway	Uni-Telway
	Schneider Modbus RTU 1:n	MODBUS SIO Master
	Schneider Modbus Ethernet	MODBUS TCP Master
Toshiba Schneider Inverter Corporation	Toshiba Schneider Inverter	Not converted
Ubon	UbonUPZ Series	
HIOKI E.E. Corporation	HIOKI E.E. Smart Site (MODBUS TCP)	

2.1.4 How to operate Project Converter

- 1 Click the [Start] button, select the [Programs] (“All Programs” on Windows® XP) menu - [Pro-face] option - [GP-Pro EX 1.10] command, and click the [Project Converter].

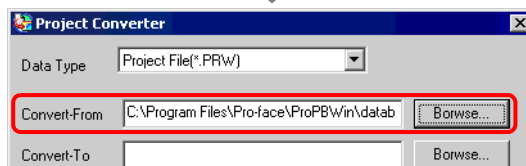
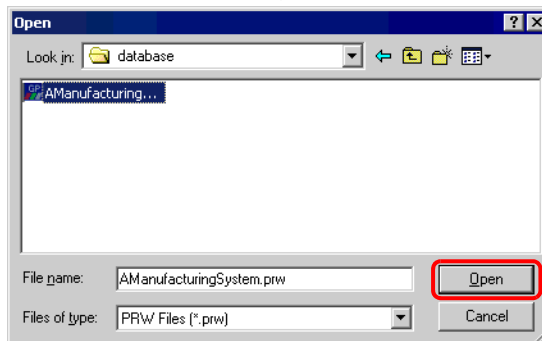
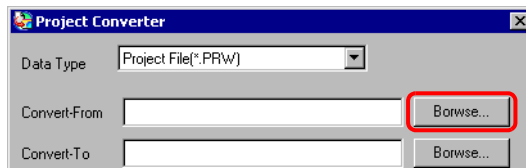



- 2 Project Converter starts up and the [Project Converter] dialog box opens. Select [Project File (*.PRW)] in the [Data Type].

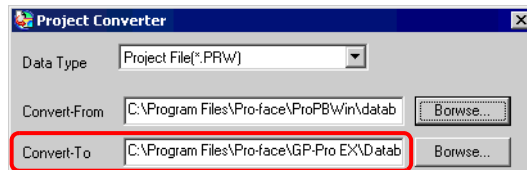
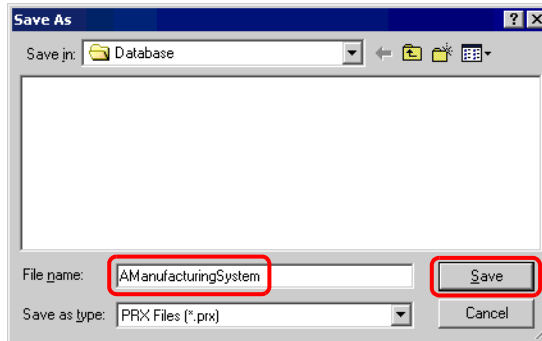
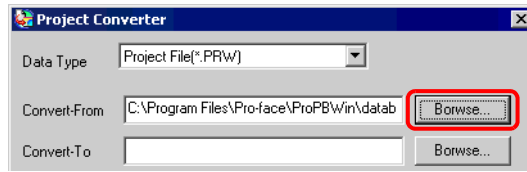


NOTE • To convert the files in the [Pro-Control Editor], select the [Logic File (*.wll)]. To convert partial program files (*.wlp) or sub-routine program files (*.wlf), you need to save the files in Project File format with GP-PRO/PBIII first.

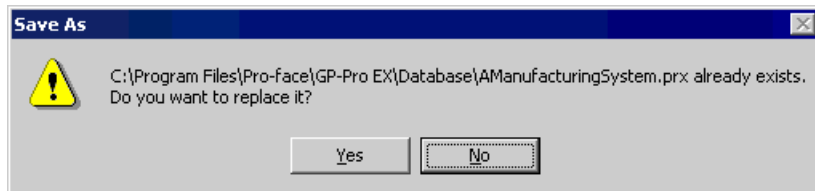
- 3 Designate a GP-PRO/PBIII for Windows’ project file (*.prw) in [Convert-From]. Click the [Browse] button, select a project file (e.g.:“A Manufacturing System.prw”), and click [Open]. The file is set to [Convert-From].

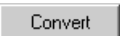


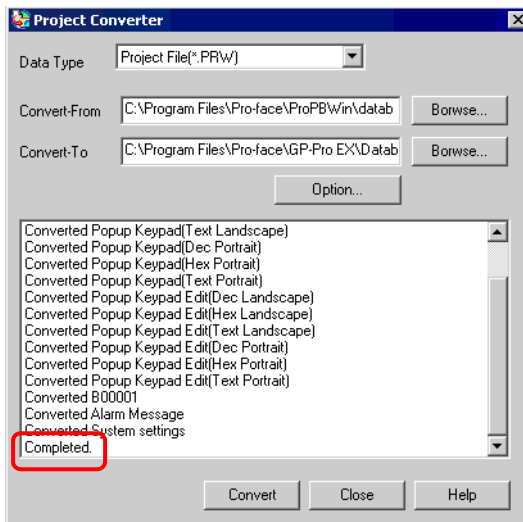
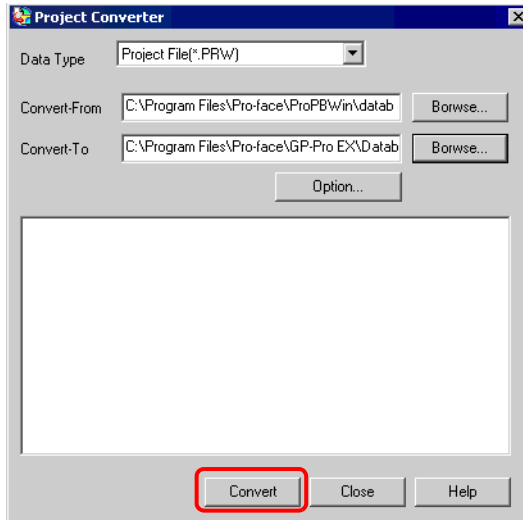
4 In [Convert-To], designate a GP-Pro EX's project file (*.prx). Click the [Browse] button, input a new [File name] (e.g.: "A Manufacturing System.prx"), and click . A new project file name is set to [Convert-To].



NOTE • When a convert-to file exists, the window that confirms whether or not to overwrite the file is displayed.

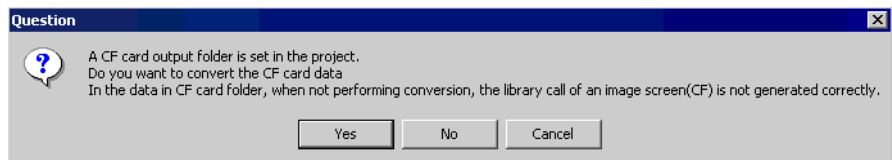



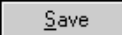

5 Click  and start the conversion.

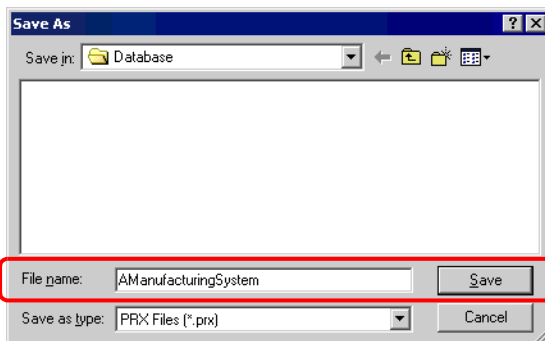


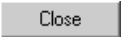
NOTE • When the following dialog box is displayed, you need to set the CF-card output folder.

☞ “ ■ Converting GP-PRO/PBIII for Windows' “CF-Card Data Destination Folder”” (page 2-12)



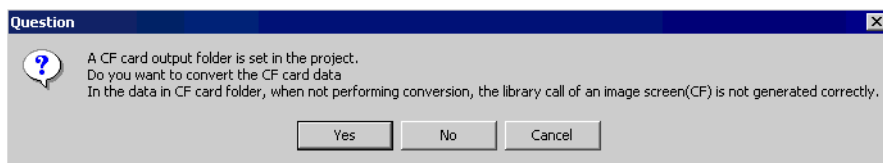
6 After conversion, the [Save Convert information] dialog box is displayed. If you click , you can save the conversion information in a text file. In this case, input a [File name] and click . If you click , you return to the [Project Converter] dialog box without saving the conversion information.



7 Click  to close the [Project Converter] dialog box.

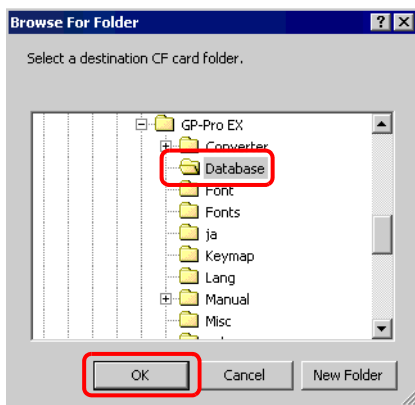
■ Converting GP-PRO/PBIII for Windows’ “CF-Card Data Destination Folder”

When converting a project file (*.prw) with the CF-Card Data Destination Folder designated in Step 5, the question of whether or not to designate the CF-Card Data Destination Folder for the conversion destination is displayed as well.



Select a folder (e.g.: “Database”) and click [OK].

If you click the [New Folder] button, you can create a reference folder at any place.



IMPORTANT

- In the [Question] dialog box, be sure to select “Yes” and designate a convert-to folder. If you select “No” called images are not properly displayed.

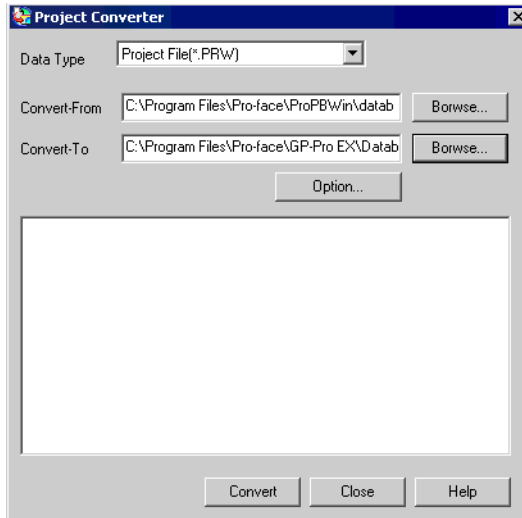
2.1.5 Setting up the Project Converter

Convert the files created with GP-PRO/PBIII for Windows or Pro-Control Editor to the project files for the GP-Pro EX.

IMPORTANT

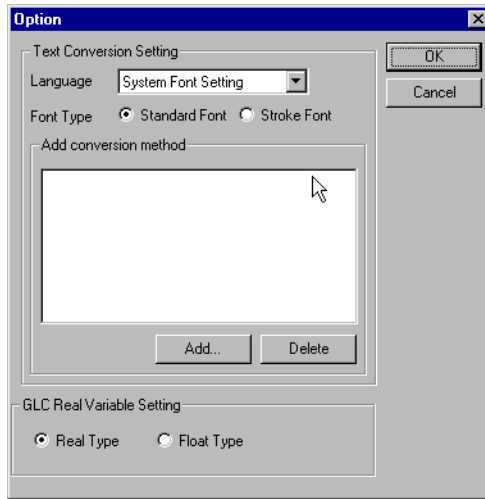
- You cannot convert data created with GP-Pro EX to the files for GP-PRO/PBIII for Windows or Pro-Control Editor.

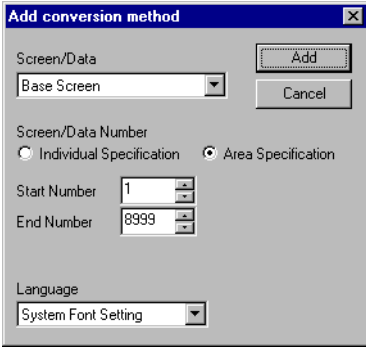
■ Project Converter



Setting	Description
Type before Conversion	Select a type of file for conversion from [Project File], [Parts File], [CF-Card Data], or [Logic File].
Convert-From	Click the [Reference] and select a file for conversion. NOTE <ul style="list-style-type: none"> If [CF-Card Data] is selected in the [Type before Conversion], you need to set up the CF-card output folder. ☞ “ ■ Converting GP-PRO/PBIII for Windows’ “CF-Card Data Destination Folder”” (page 2-12)
Convert-To	Please click the [Reference] and specify the location to save and the file name. NOTE <ul style="list-style-type: none"> If [CF-Card Data] is selected in the [Type before Conversion], you need to set up the CF-card output folder. ☞ “ ■ Converting GP-PRO/PBIII for Windows’ “CF-Card Data Destination Folder”” (page 2-12)
Option	This opens the [Option Settings] dialog box. ☞ “ ◆ Options” (page 2-14)

◆ Options



Setting	Description
Text Conversion Setting	Set up the screens and data for conversion individually.
Language	Select the base language for conversion from [System Font Setting], [Western], [Korean], [Chinese (Traditional)], [Chinese (Simplified)], [Japanese].
Font Type	Select the [Standard Font] or the [Stroke Font].
Add conversion method	<p>Click [Add] to display the [Add conversion method] dialog box.</p>  <p>NOTE</p> <ul style="list-style-type: none"> • If you want to delete the settings, select the item line from the list of [Add conversion method] and click [Delete].
Screen/Data	Select a screen or data to convert from [Base Screen], [Mark Screen], [Line Graph Screen], [Keypad Screen], [Text Screen], [Window], [Image Screen], [Sound], [Global D-Script], [Extention SIO Script], [D-Script Function], [Data Sampling], [Filing Data], [Log Settings], [CSV Data Transfer Feature], [Alarm Message/Summary], [Bit Log Alarm], [Word Log Alarm], [Logic Data].
Screen/Data Number	<ul style="list-style-type: none"> • Specify Individual Specify the number of the screen or data you want to convert. • Specify Range Specify the [Start No.] and the [End No.] of the screen or data you want to convert from 1 to 8999.
Language	Select from [System Font Setting], [Western], [Korean], [Chinese (Traditional)], [Chinese (Simplified)], and [Japanese].
GLC Function Conversion Settings	Select [Real Type] or [Float Type].

2.1.6 Error Messages

The error messages displayed during Project Converter operation and the causes and solutions are as follows.

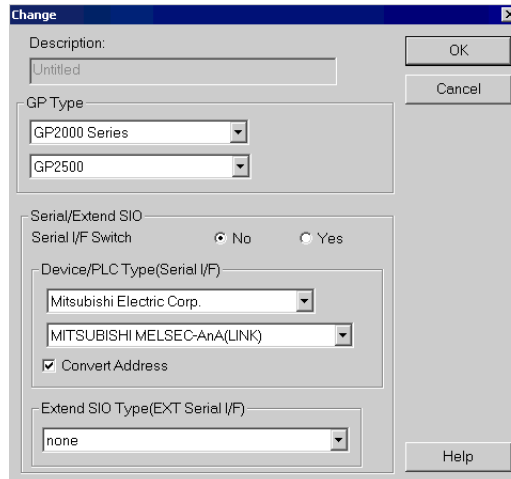
The selected Device/PLC is unavailable for conversion. Change the Device/PLC before conversion.

A device/PLC type which is not supported by GP-Pro EX is selected. In GP-PRO/PBIII for Windows, change the device/PLC to a device/PLC supported by GP-Pro EX and then execute Project Converter again. For devices supported by GP-Pro EX, refer to “2.1.3 List of Devices before and after the Conversion” (page 2-5)

- How to change [Device/PLC Type] in GP-PRO/PBIII for Windows
 - (1) Select the [Device/PLC Type] icon in GP-PRO/PBIII for Windows' Project Manager.



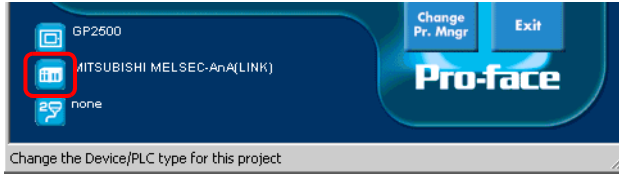
- (2) The [Change] dialog box is displayed. Select a [Device/PLC Type] you want to change to. Always confirm the device address settings after changing a [Device/PLC Type].



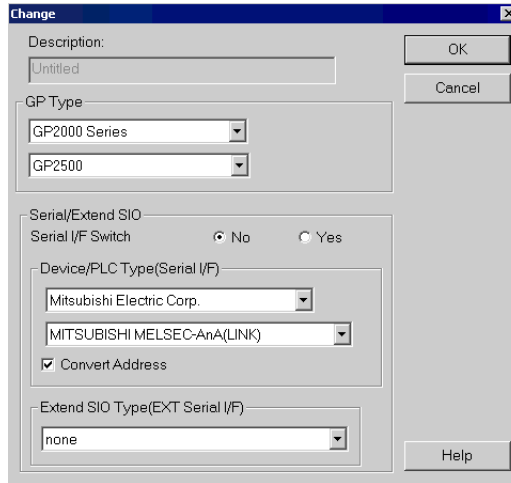
Cannot read the source Device/PLC file.

Cannot recognize the convert-from device model. In GP-PRO/PBIII for Windows, change it to a device type supported by GP-Pro EX and then execute Project Converter again. For supported devices, refer to “2.1.3 List of Devices before and after the Conversion” (page 2-5) .

- How to change [Device/PLC Type] in GP-PRO/PBIII for Windows
 (1) Select the [Device/PLC Type] icon in GP-PRO/PBIII for Windows' Project Manager.



- (2) The [Change] dialog box is displayed. Select a [Device/PLC Type] you want to change to. Always confirm the device address settings after changing a [Device/PLC Type].



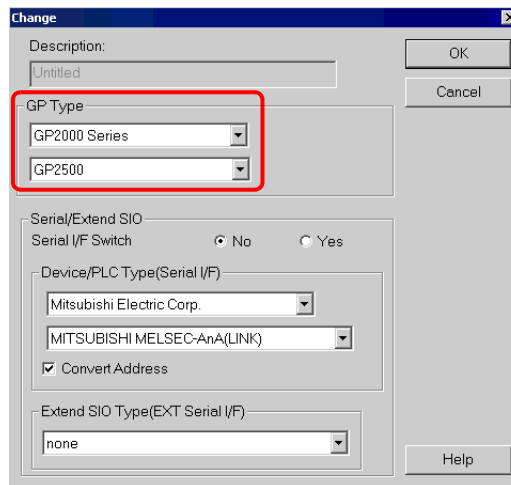
The selected model is unavailable for conversion. Change the model.

A display type which is not supported by GP-Pro EX is selected. In GP-PRO/PBIII for Windows, change the display type to a GP type supported by GP-Pro EX and then execute Project Converter again. For supported models, refer to “2.1.2 List of GP Models before and after the Conversion” (page 2-2) .

- How to change [GP Type] in GP-PRO/PBIII for Windows
- (1) Select the [GP Type] icon in GP-PRO/PBIII for Windows’ Project Manager.



- (2) The [Change] dialog box is displayed. Select a [GP Type] you want to change to. Be aware that the GP may have different features before and after conversion.



Cannot read the model information file.

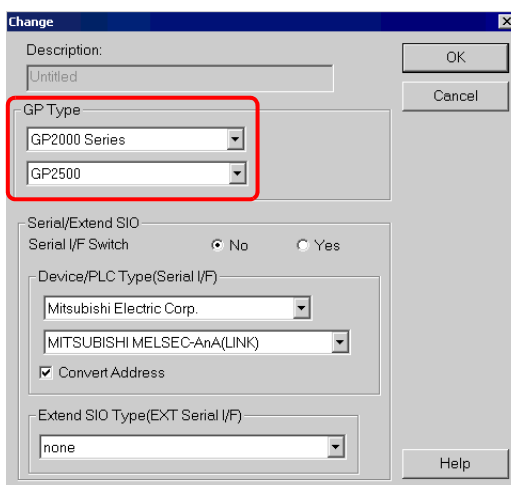
Cannot recognize the convert-from GP model. In GP-PRO/PBIII for Windows, change the display type to a GP type supported by GP-Pro EX and then execute Project Converter again. For supported models, refer to “2.1.2 List of GP Models before and after the Conversion” (page 2-2) .

- How to change [GP Type] in GP-PRO/PBIII for Windows

(1) Select the [GP Type] icon in GP-PRO/PBIII for Windows’ Project Manager.



(2) The [Change] dialog box is displayed. Select a [GP Type] you want to change to. Be aware that the GP may have different features before and after conversion.



Cannot read AGPCnv.cfg file.

Failed to load GP-Pro EX’s AGPCnv.cfg file. Install GP-Pro EX again.

Cannot read the prw file.

Failed to read a GP-PRO/PBIII for Windows file (*.prw). Microsoft Windows access authority may be set to the GP-PRO/PBIII for Windows file (*.prw). Check the file properties in Explorer and check the access authority settings.

Cannot access the parts file.

Failed to read a GP-PRO/PBIII for Windows’ Part file (*.PDB or *.BPD). Microsoft Windows access authority may be set to the GP-PRO/PBIII for Windows’ Part file (*.PDB or *.BPD). Check the file properties in Explorer and check the access authority settings.

Invalid extension.

An incorrect extension is designated in Project Converter’s [Convert To]. Input a correct extension (*.prx).

2.2 How to Update Software

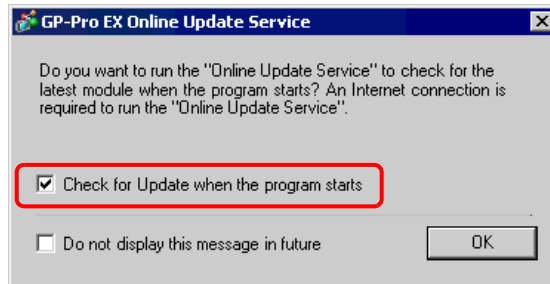
This section explains how to update GP-Pro EX. Apart from software, there are also update programs for manuals and drivers.

- NOTE**
- For GP-Pro EX updates, use the online update function. An Internet connection is required.
 - Please understand that contents of the published screens in this operation procedure will update with no advance notice.

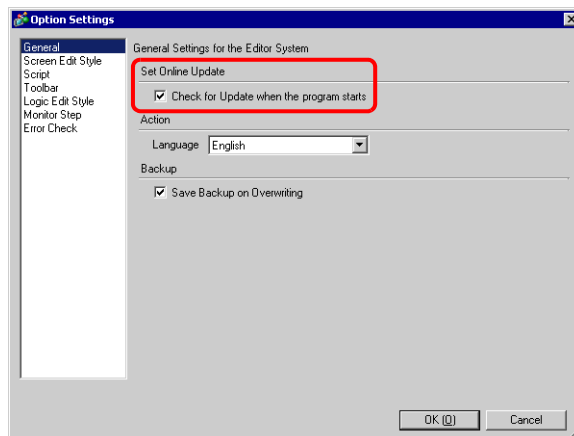
2.2.1 Working with Online Update

1 Select the [Help (H)] menu - [Confirm Update of GP-Pro EX] command.

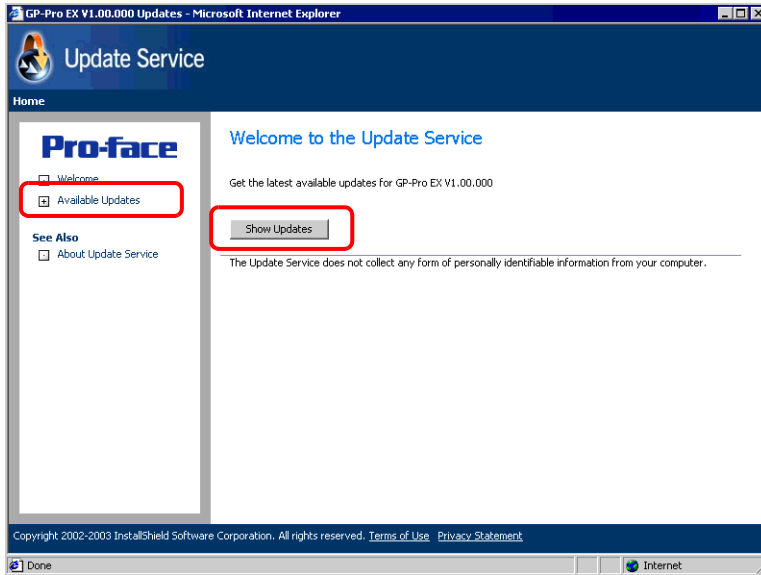
- NOTE**
- When you startup GP-Pro EX, the following type of dialog box appears. To automatically start the online update function every time you start GP-Pro EX, beginning with the next time, leave the check mark next to [Check for Update when the program starts] and click [OK]. If you want to occasionally confirm if there is a necessary update, remove the check mark and click [OK].



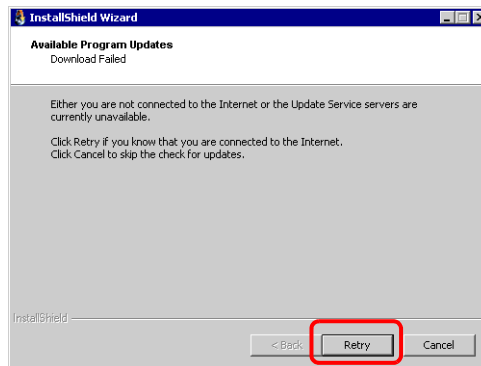
The settings for starting the online update function when GP-Pro EX starts are normally as follows. From [View (V)], select [Option Settings (O)] command - [General]. Put a check mark next to the [Check for Update when the program starts] option and click [OK].



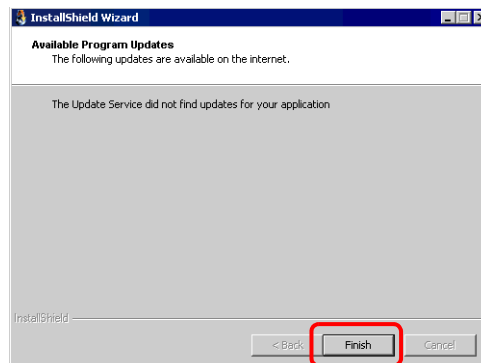
- 2 Search for whether or not there are any necessary program updates via the Internet on the computer you are using. (The [InstallShield Wizard] dialog box will appear while searching.) When the [Welcome to the Update Service] screen appears, click the [Available Updates] or [Show Updates] button.

**NOTE**

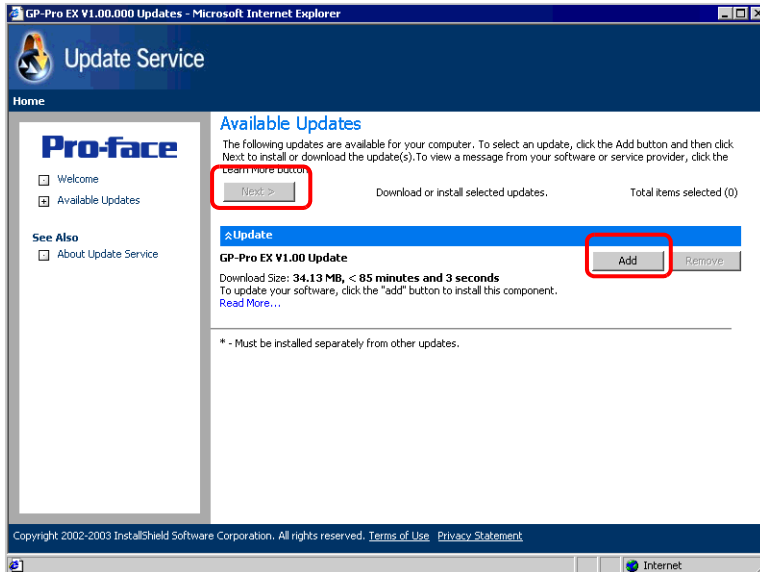
- If you do not have an Internet connection, the following error will occur. Once you are connected, click the [Retry] button. The GP-Pro EX startup time search will not be displayed.



- After searching, if there are no program updates, the following dialog box will appear. Click the [Finish] button to finish. The GP-Pro EX startup time search will not be displayed.

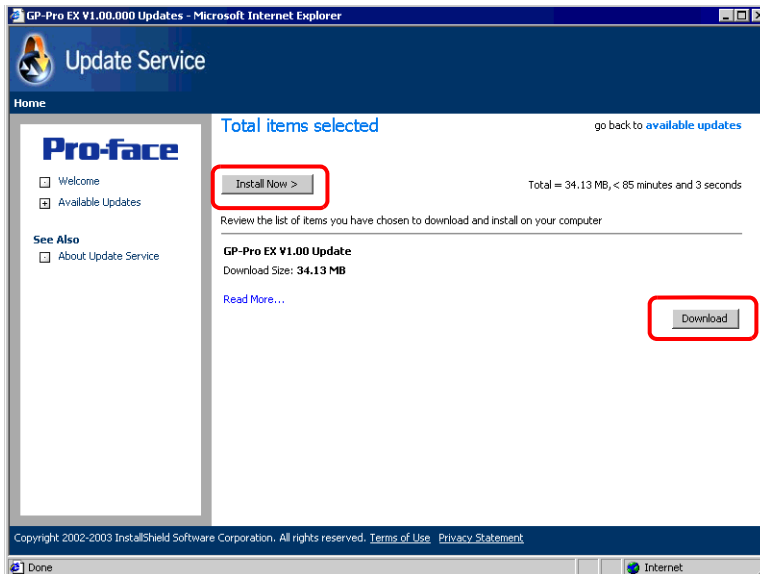


- 3 When the [Available Updates] screen appears, you can confirm the program updates. Select the items you want update with the [Add] button, and click the [Next] button.

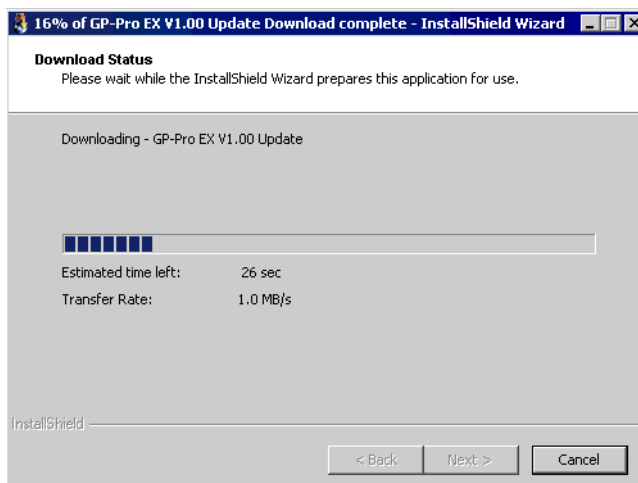
**NOTE**

- You can click the button **Update** to make sure the program is up to date. If there is an arrow pointing down, click the arrow to expand the selection.
- The previous [Available Updates] screen's update item is an example. You can confirm the latest program updates on your computer.

- 4 The [Total items selected] screen will appear. You can either automatically install all selected items, or install items separately.

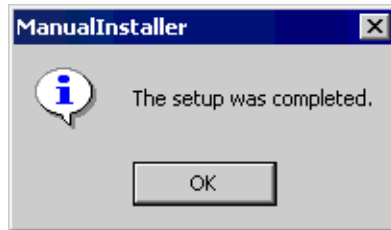
**NOTE**

- Please close all GP-Pro EX project files before installing.
- Click the [Install Now >] button
Automatically starts the installation of all selected program updates. After all program updates are finished downloading, click [Update] and the install begins. Please follow the wizard's instructions.
To cancel the installation, click the [Cancel] button.



- Click the [Download] button
Individually starts the installation of selected program updates. Click the [Download] button, select a save location for the program updates, and click the [Save] button. Next, click the [Finish] button to complete the wizard. Double-click the saved program updates (*.exe) and the installation will automatically begin.

- 5 The installation of product updates for the software is now complete. When the installation of the manual's product updates completes, the message [The setup was completed.] will appear, so click [OK] to finish.



Memo