

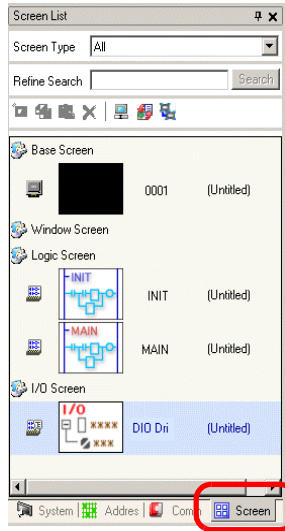
31.3 Mapping I/O to the GP Built-in DIO

31.3.1 I/O Terminals in the GP Built-in DIO

Displays the I/O Screen and maps addresses to the I/O terminals in the GP built-in DIO.

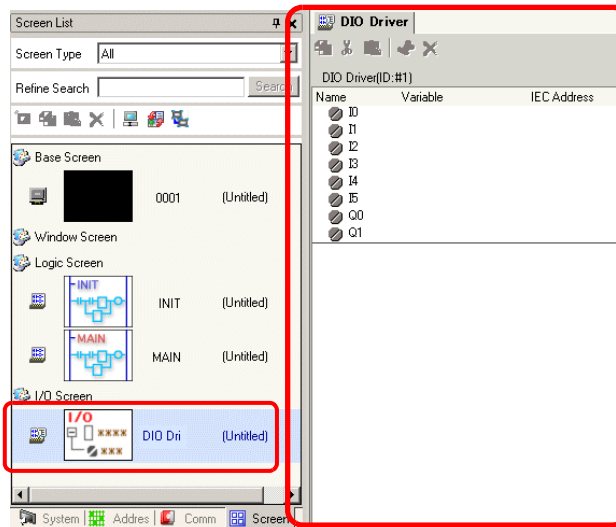
■ Displaying the I/O Screen

- 1 Click the [Screen List] tab to open the [Screen List] Window.



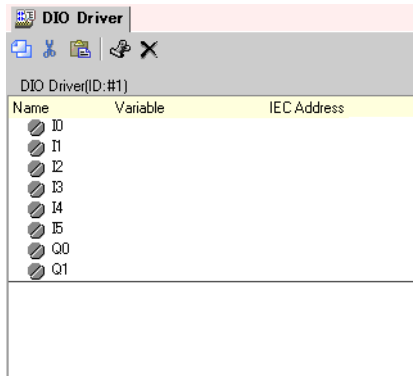
- NOTE** • If the [Screen List] tab is not displayed in the Work Space, on the [View (V)] menu, point to [Work Space (W)] and then click [Screen List Window (G)].






- 2 Double-click the [I/O Screen] to display the I/O in the workspace.



- NOTE** • For how to map addresses to I/O terminals, refer to the following section.
 ☞ “31.1.2 Mapping Addresses to I/O Terminals” (page 31-4)

31.3.2 I/O Screen Setup Guide



| Setting | | Description |
|-------------|---|--|
| Copy |  | To copy a variable select it and click the icon. |
| Cut |  | To cut a variable select it and click the icon. |
| Paste |  | To paste a variable, Copy or Cut it to the clipboard and then click the icon. |
| Edit |  | To change a variable or register a new variable, select it and click the icon. |
| Delete |  | To delete a variable select it and click the icon. |
| Name | | Displays the terminal ID symbol. |
| Variable | | Displays the address mapped to the terminal. |
| IEC Address | | Displays the I/O address (IEC address). |