


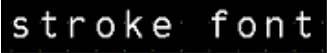








# 6 | Font

This chapter explains basic features of GP-Pro EX’s “Font” and basic ways of placing text with each font.

Please start by reading “6.1 Font Types” (page 6-2) and then turn to the corresponding page.

6.1	Font Types .....	6-2
6.2	Stroke Font, Standard Font .....	6-3
6.3	Image Font .....	6-15
6.4	[Font Settings] Settings Guide .....	6-19
6.5	Restrictions .....	6-20

## 6.1 Font Types

Stroke Font, Standard Font	
<p>These fonts are used normally.                      The stroke font can be freely enlarged.                      The standard font displays even small sized characters well.                      (e.g.) Text in stroke font</p> <p>“Japanese”      </p> <p>“English”        </p> <p>“Chinese (Simplified)”      </p>	<p> Setup Procedure (page 6-12)   Details (page 6-3)</p>
Image Font	
<p>This font is used to draw in Windows fonts.</p> <p>“Arial/Italic”      </p> <p>“Arial Black”      </p> <p>“Helvetica/Bold”      </p>	<p> Setup Procedure (page 6-16)   Details (page 6-15)</p>

## 6.2 Stroke Font, Standard Font

### 6.2.1 Details

These fonts are used normally.

The stroke font can be freely enlarged.

The standard font displays even small sized characters well.

(e.g.) Text in stroke font

“Japanese”

ストロークフォント

“English”

stroke font

“Chinese (Simplified)”

unicode 标准

### ■ Text Feature

#### ◆ Stroke Font

- Can be freely enlarged and displays well.  
This font can be freely enlarged within the range of 6 to 127 dots and displays well.  
The standard size is a single-byte character. Two-byte characters are fixed with the same size horizontally and vertically.  
However, with a vector font feature, small sized text cannot be displayed well.

Single-byte Character



6 - 127 dots

Two-byte Character



12 - 254 dots

- Can be used for bold/outlines.

#### ◆ Standard Font

- Small sized text can also be displayed well.  
Small sized text also displays well if placed in full scale (original size), such as “8 × 16 dots”, “16 × 16 dots”, or “32 × 32 dots”. However, the scaling factor of enlargement/reduction should be selected.
- Can be used for bold/shadows.

## ■ Font Types

Each display language corresponds to the following fonts.

Font Type	Display Language	Font Name
Stroke Font	Japanese	Japanese Stroke Font
	ASCII	English Stroke Font
	Chinese (Simplified)	Chinese (Simplified) Stroke Font
	Chinese (Traditional)	Chinese (Traditional) Stroke Font
	Korean	Korean Stroke Font
	Cyrillic <sup>*1</sup>	Cyrillic Stroke Font
	Thai	Thai Stroke Font
Standard Font	Japanese	Japanese Standard Font
	ASCII	English Standard Font
	Chinese (Simplified)	Chinese (Simplified) Standard Font
	Chinese (Traditional)	Chinese (Traditional) Standard Font
	Korean	Korean Standard Font

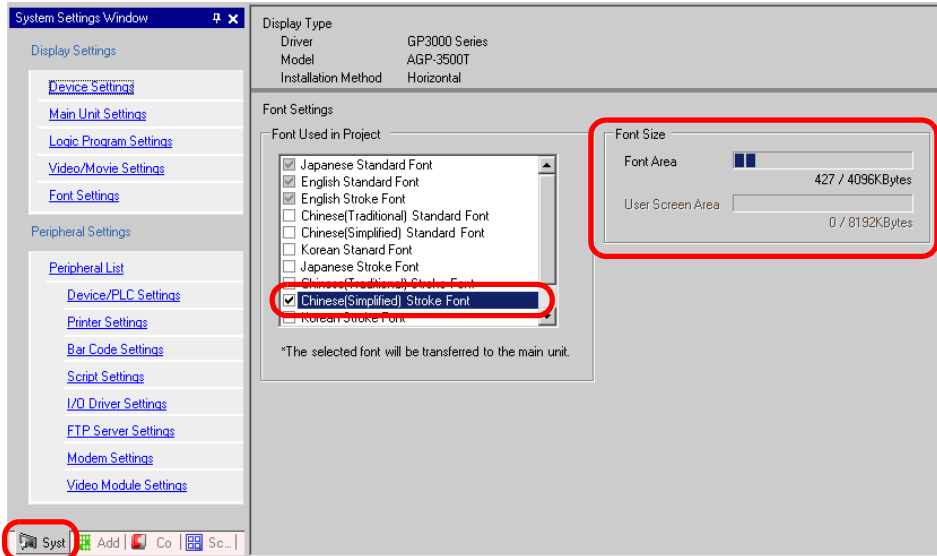
\*1 Cyrillic letters are mainly used in Russian, Ukrainian, Bulgarian, Belarusian, Serbian, Macedonian, Kazakhstan, Kirgiz, Mongolian languages.

## ■ Add/Delete Font

Stroke font and standard font use the Font Area (4Mbytes).

To use fonts other than “Japanese Standard Font”, “English Standard Font”, and “English Stroke Font”, add/delete fonts.

To add/delete fonts, select the [System Settings Window] menu - [Font Settings] command.



(e.g.) To add Chinese (Simplified) Stroke Font, if you select “Chinese (Simplified) Stroke Font” check box from [Font Used in Project], 427 Kbyte out of 4M bytes of Font Area will be used for Chinese (Simplified) Stroke Font.

### IMPORTANT

- Add only the fonts to be used. If you select unnecessary fonts, the font size exceeds the Font Area’s capacity (4MB), the User Screen Area (e.g.: “8MB for AGP-3500T\*1”) will also be used, and the capacity for creating screens will be restricted.

\*1 The User Screen Area’s capacity depends on the GP model.


“1.3 List of Supported Functions by Device” (page 1-4)

### NOTE

- “Japanese Standard Font”, “English Standard Font”, and “English Stroke Font” are fixed. These fonts are automatically transferred to the GP with little load on the Font Area (4MB) and can be used without considering the font size.

## ■ Compatible Character Codes

When you want to command to display characters in the Data Display(Text Display) from the device (PLC), please use the following character codes depending on the display language set for the data display.

Data Display Part's Display Language	Corresponding Text Code	Remarks
Japanese	Shift JIS Code	—
ASCII	Code Page850 Code Page1250 Code Page1252 Code Page1254 Code Page1257	<div style="border: 1px solid black; padding: 2px; display: inline-block; margin-bottom: 5px;"><b>IMPORTANT</b></div> <ul style="list-style-type: none"> <li>• The English Standard Font only corresponds to Code Page850.</li> <li>• Before using the English Stroke Font, be sure to refer to the following text list.</li> </ul> <p> “ ■ Western Stroke Font Dedicated Text List” (page 6-7)</p>
Chinese (Simplified)	GB 2312	—
Chinese (Traditional)	BIG5	—
Korean	KS C 5601	—
Cyrillic	Code Page1251	—
Thai	Code Page874	—

### ■ Western Stroke Font Dedicated Text List

If you are using Western Stroke Fonts, only the black letters in the following list can be displayed in the data display (Text Display). Under the black letter, you will find the Code Page 850's hexadecimal character code number.

**IMPORTANT**

- The red characters cannot be displayed on a Data Display Part (Text Display).

				20 <sup>*1</sup>	!	"	#	\$	%	&	'	(
)	*	+	,	-	.	/	0	1	2	3	4	
29	2a	2b	2c	2d	2e	2f	30	31	32	33	34	
5	6	7	8	9	:	;	<	=	>	?	@	
35	36	37	38	39	3a	3b	3c	3d	3e	3f	40	
A	B	C	D	E	F	G	H	I	J	K	L	
41	42	43	44	45	46	47	48	49	4a	4b	4c	
M	N	O	P	Q	R	S	T	U	V	W	X	
4d	4e	4f	50	51	52	53	54	55	56	57	58	
Y	Z	[	\	]	^	_	`	a	b	c	d	
59	5a	5b	5c	5d	5e	5f	60	61	62	63	64	
e	f	g	h	i	j	k	l	m	n	o	p	
65	66	67	68	69	6a	6b	6c	6d	6e	6f	70	
q	r	s	t	u	v	w	x	y	z	{		
71	72	73	74	75	76	77	78	79	7a	7b	7c	
}	~	Ä	Å	Ç	É	Ñ	Ö	Ü	á	à	â	
7d	7e	8e	8f	80	90	a5	99	9a	a0	85	83	
ä	ã	å	ç	é	è	ê	ë	í	ì	î	ï	
84	c6	86	87	82	8a	88	89	a1	8d	8c	88	
ñ	ó	ò	ô	ö	õ	ú	ù	û	ü	†	°	
a4	a2	95	93	94	e4	a3	97	96	81		f8	
¢	£	§	•	¶	ß	®	©	™	'	¨	Æ	
bd	9c	f5		f4	e1	a9	b8		ef	f9	92	
ø	±	¥	µ	α	ο	æ	ø	¿	¡	¬	ƒ	
9d	f1	be	e6	a6	a7	91	96	98	ad	aa	9f	
<<	>>	...	À	Ã	Õ	€	œ	—	—	“	”	
9e	9f		b7	c7	e5							

\*1 "0020" displays a single-byte space.

Continued

/	/	÷	ÿ	ÿ	/	æ	<	>	‡	.	,
		f6	98			cf				fa	
//	‰	Â	Ê	Á	Ë	È	Í	Î	Ï	Ì	Ó
		b6	d2	b5	d3	d4	d6	d7	d8	de	e0
Ô	Ò	Ú	Û	Ù	ı	^	~	-	˘	.	◦
e2	e3	e9	ea	eb	d5						
	”	˘	Ł	ł	Š	š	Ž	ž	ı	Đ	
š		˘							ı	đ	
f7											
ð	Ý	ý	Ɔ	ɔ	-	x	1	2	3	½	¼
d0	ed	ec	e8	e7	f0	9e	fb	fd	fc	ab	ac
¾		€	Ž	ž	Ž	ž	Š	š	Ş	ş	
f3											
Ț	ț	Ț	ț		Ǻ	ǻ	Ł	ł	Ł	ł	Ą
ą	Ǻ	ǻ	Ǻ	ǻ	Ɔ	ɔ	Ć	ć	Č	č	Ǫ
ő	Ű	ű	Ű	ű	Ń	ń	Ň	ň	Ŕ	ř	Ř
ř	đ	Ǻ	ǻ	Ǻ	ǻ	Ŕ	ř	È	è	Ē	ē
Ŋ	ŋ	Ō	ō	Ū	ū	Ū	ū	Ɔ	ɔ	Ī	ī
Ł	ł	Ā	ā	Į	į	—	İ		◦	■	İ
ĩ	κ	Ŋ	ŋ	Ɔ	ɔ	ee	Ū	ū	—	≡	!!
										f2	
←	↑	→	↓	↔	↕	↕	.	L			
									C4	b3	da
└	└	└	└	└	└	└	└	└	≡	≡	└
6f	c0	d9	c3	64	c2	c1	c5	cd	ba	c9	bb
└	└	└	└	└	└	└	└	└	└	└	└
c8	bc	cc	b9	cb	ca	ce	df	dc	db	b0	b1
▒	■	▲	▶	▼	◀	○	◻	◻	◻	☺	☺
b2	fe										
♀	♂	♠	♣	♥	♦	♪	♪				



## ■ Cyrillic Stroke Font Only Character List

The following characters are supported as Cyrillic.

You can see the Character Code under each letter. The upper is Native code, and the lower is Unicode.

	!	”	#	\$	%	&		(	)	*	+	,	-	.	/
0x20	0x21	0x22	0x23	0x24	0x25	0x26	0x27	0x28	0x29	0x2A	0x2B	0x2C	0x2D	0x2E	0x2F
0x0020	0x0021	0x0022	0x0023	0x0024	0x0025	0x0026	0x0027	0x0028	0x0029	0x002A	0x002B	0x002C	0x002D	0x002E	0x002F
0	1	2	3	4	5	6	7	8	9	:	;	<	=	>	?
0x30	0x31	0x32	0x33	0x34	0x35	0x36	0x37	0x38	0x39	0x3A	0x3B	0x3C	0x3D	0x3E	0x3F
0x0030	0x0031	0x0032	0x0033	0x0034	0x0035	0x0036	0x0037	0x0038	0x0039	0x003A	0x003B	0x003C	0x003D	0x003E	0x003F
@	A	B	C	D	E	F	G	H	I	J	K	L	M	N	O
0x40	0x41	0x42	0x43	0x44	0x45	0x46	0x47	0x48	0x49	0x4A	0x4B	0x4C	0x4D	0x4E	0x4F
0x0040	0x0041	0x0042	0x0043	0x0044	0x0045	0x0046	0x0047	0x0048	0x0049	0x004A	0x004B	0x004C	0x004D	0x004E	0x004F
P	Q	R	S	T	U	V	W	X	Y	Z	[	¥	]	^	_
0x50	0x51	0x52	0x53	0x54	0x55	0x56	0x57	0x58	0x59	0x5A	0x5B	0x5C	0x5D	0x5E	0x5F
0x0050	0x0051	0x0052	0x0053	0x0054	0x0055	0x0056	0x0057	0x0058	0x0059	0x005A	0x005B	0x005C	0x005D	0x005E	0x005F
`	a	b	c	d	e	f	g	h	i	j	k	l	m	n	o
0x60	0x61	0x62	0x63	0x64	0x65	0x66	0x67	0x68	0x69	0x6A	0x6B	0x6C	0x6D	0x6E	0x6F
0x0060	0x0061	0x0062	0x0063	0x0064	0x0065	0x0066	0x0067	0x0068	0x0069	0x006A	0x006B	0x006C	0x006D	0x006E	0x006F
p	q	r	s	t	u	v	w	x	y	z	{		}	~	
0x70	0x71	0x72	0x73	0x74	0x75	0x76	0x77	0x78	0x79	0x7A	0x7B	0x7C	0x7D	0x7E	0x7F
0x0070	0x0071	0x0072	0x0073	0x0074	0x0075	0x0076	0x0077	0x0078	0x0079	0x007A	0x007B	0x007C	0x007D	0x007E	0x007F
б	ѓ	ƒ	ѓ	„	…	†	‡		‰	Јб	<	Ѓ	Ќ	ћ	Џ
0x80	0x81	0x82	0x83	0x84	0x85	0x86	0x87	0x88	0x89	0x8A	0x8B	0x8C	0x8D	0x8E	0x8F
0x0402	0x0403	0x201A	0x0453	0x201E	0x2026	0x2020	0x2021	0x20AC	0x2030	0x0409	0x2039	0x040A	0x040C	0x040B	0x040F
ђ	‘	’	“	”	•	—	—		™	Јь	>	њ	ќ	ћ	џ
0x90	0x91	0x92	0x93	0x94	0x95	0x96	0x97	0x98	0x99	0x9A	0x9B	0x9C	0x9D	0x9E	0x9F
0x0452	0x2018	0x2019	0x201C	0x201D	0x2022	0x2013	0x2014		0x2122	0x0459	0x203A	0x045A	0x045C	0x045B	0x045F
	Ў	ў	Ј	⊙	Г	І	Ѕ	Ё	©	Є	«	¬	®	İ	
0xA0	0xA1	0xA2	0xA3	0xA4	0xA5	0xA6	0xA7	0xA8	0xA9	0xAA	0xAB	0xAC	0xAD	0xAE	0xAF
0x00A0	0x040E	0x045E	0x0408	0x00A4	0x0490	0x00A6	0x00A7	0x0401	0x00A9	0x0404	0x00AB	0x00AC	0x00AD	0x00AE	0x0407
°	±	І	і	г	μ	¶	·	ё	No.	ε	»	ј	S	s	ı
0xB0	0xB1	0xB2	0xB3	0xB4	0xB5	0xB6	0xB7	0xB8	0xB9	0xBA	0xBB	0xBC	0xBD	0xBE	0xBF
0x00B0	0x00B1	0x0406	0x0456	0x0491	0x00B5	0x00B6	0x00B7	0x0451	0x2116	0x0454	0x00BB	0x0458	0x0405	0x0455	0x0457
А	Б	В	Г	Д	Е	Ж	З	И	Й	К	Л	М	Н	О	П
0xC0	0xC1	0xC2	0xC3	0xC4	0xC5	0xC6	0xC7	0xC8	0xC9	0xCA	0xCB	0xCC	0xCD	0xCE	0xCF
0x0410	0x0411	0x0412	0x0413	0x0414	0x0415	0x0416	0x0417	0x0418	0x0419	0x041A	0x041B	0x041C	0x041D	0x041E	0x041F
Р	С	Т	У	Ф	Х	Ц	Ч	Ш	Щ	Ъ	Ы	Ь	Э	Ю	Я
0xD0	0xD1	0xD2	0xD3	0xD4	0xD5	0xD6	0xD7	0xD8	0xD9	0xDA	0xDB	0xDC	0xDD	0xDE	0xDF
0x0420	0x0421	0x0422	0x0423	0x0424	0x0425	0x0426	0x0427	0x0428	0x0429	0x042A	0x042B	0x042C	0x042D	0x042E	0x042F
а	б	в	г	д	е	ж	з	и	й	к	л	м	н	о	п
0xE0	0xE1	0xE2	0xE3	0xE4	0xE5	0xE6	0xE7	0xE8	0xE9	0xEA	0xEB	0xEC	0xED	0xEE	0xEF
0x0430	0x0431	0x0432	0x0433	0x0434	0x0435	0x0436	0x0437	0x0438	0x0439	0x043A	0x043B	0x043C	0x043D	0x043E	0x043F
р	с	т	у	ф	х	ц	ч	ш	щ	ъ	ы	ь	э	ю	я
0xF0	0xF1	0xF2	0xF3	0xF4	0xF5	0xF6	0xF7	0xF8	0xF9	0xFA	0xFB	0xFC	0xFD	0xFE	0xFF
0x0440	0x0441	0x0442	0x0443	0x0444	0x0445	0x0446	0x0447	0x0448	0x0449	0x044A	0x044B	0x044C	0x044D	0x044E	0x044F

### ■ Thai Stroke Font Only Character

The following characters are supported as Thai.

You can see the Character Code under each letter. The upper is Native code, and the lower is Unicode.

**IMPORTANT**


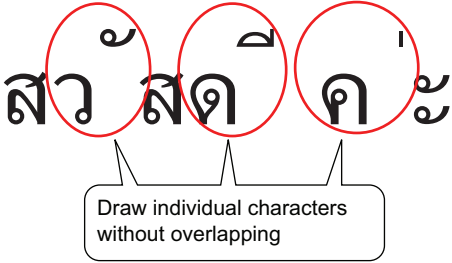
- The red letters cannot be used individually since they are superimposed characters.

	!	"	#	\$	%	&		(	)	*	+	,	-	.	/
0x20	0x21	0x22	0x23	0x24	0x25	0x26	0x27	0x28	0x29	0x2A	0x2B	0x2C	0x2D	0x2E	0x2F
0x0020	0x0021	0x0022	0x0023	0x0024	0x0025	0x0026	0x0027	0x0028	0x0029	0x002A	0x002B	0x002C	0x002D	0x002E	0x002F
0	1	2	3	4	5	6	7	8	9	:	;	<	=	>	?
0x30	0x31	0x32	0x33	0x34	0x35	0x36	0x37	0x38	0x39	0x3A	0x3B	0x3C	0x3D	0x3E	0x3F
0x0030	0x0031	0x0032	0x0033	0x0034	0x0035	0x0036	0x0037	0x0038	0x0039	0x003A	0x003B	0x003C	0x003D	0x003E	0x003F
@	A	B	C	D	E	F	G	H	I	J	K	L	M	N	O
0x40	0x41	0x42	0x43	0x44	0x45	0x46	0x47	0x48	0x49	0x4A	0x4B	0x4C	0x4D	0x4E	0x4F
0x0040	0x0041	0x0042	0x0043	0x0044	0x0045	0x0046	0x0047	0x0048	0x0049	0x004A	0x004B	0x004C	0x004D	0x004E	0x004F
P	Q	R	S	T	U	V	W	X	Y	Z	[	¥	]	^	_
0x50	0x51	0x52	0x53	0x54	0x55	0x56	0x57	0x58	0x59	0x5A	0x5B	0x5C	0x5D	0x5E	0x5F
0x0050	0x0051	0x0052	0x0053	0x0054	0x0055	0x0056	0x0057	0x0058	0x0059	0x005A	0x005B	0x005C	0x005D	0x005E	0x005F
`	a	b	c	d	e	f	g	h	i	j	k	l	m	n	o
0x60	0x61	0x62	0x63	0x64	0x65	0x66	0x67	0x68	0x69	0x6A	0x6B	0x6C	0x6D	0x6E	0x6F
0x0060	0x0061	0x0062	0x0063	0x0064	0x0065	0x0066	0x0067	0x0068	0x0069	0x006A	0x006B	0x006C	0x006D	0x006E	0x006F
p	q	r	s	t	u	v	w	x	y	z	{		}	~	
0x70	0x71	0x72	0x73	0x74	0x75	0x76	0x77	0x78	0x79	0x7A	0x7B	0x7C	0x7D	0x7E	0x7F
0x0070	0x0071	0x0072	0x0073	0x0074	0x0075	0x0076	0x0077	0x0078	0x0079	0x007A	0x007B	0x007C	0x007D	0x007E	0x007F
					...										
0x80	0x81	0x82	0x83	0x84	0x85	0x86	0x87	0x88	0x89	0x8A	0x8B	0x8C	0x8D	0x8E	0x8F
0x20AC					0x2026										
	‘	’	“	”	•	—	—								
0x90	0x91	0x92	0x93	0x94	0x95	0x96	0x97	0x98	0x99	0x9A	0x9B	0x9C	0x9D	0x9E	0x9F
	0x2018	0x2019	0x201C	0x201D	0x2022	0x2013	0x2014								
	ก	ข	ช	ค	ด	ต	ถ	ง	จ	ฉ	ช	ซ	ฌ	ญ	ฎ
0xA0	0xA1	0xA2	0xA3	0xA4	0xA5	0xA6	0xA7	0xA8	0xA9	0xAA	0xAB	0xAC	0xAD	0xAE	0xAF
0x00A0	0x0E01	0x0E02	0x0E03	0x0E04	0x0E05	0x0E06	0x0E07	0x0E08	0x0E09	0x0E0A	0x0E0B	0x0E0C	0x0E0D	0x0E0E	0x0E0F
ฐ	ฑ	ฒ	ณ	ด	ต	ถ	ท	ธ	น	บ	ป	ผ	ฝ	พ	ฟ
0xB0	0xB1	0xB2	0xB3	0xB4	0xB5	0xB6	0xB7	0xB8	0xB9	0xBA	0xBB	0xBC	0xBD	0xBE	0xBF
0x0E10	0x0E11	0x0E12	0x0E13	0x0E14	0x0E15	0x0E16	0x0E17	0x0E18	0x0E19	0x0E1A	0x0E1B	0x0E1C	0x0E1D	0x0E1E	0x0E1F
ภ	ม	ย	ร	ฤ	ล	ฌ	ว	ศ	ษ	ส	ห	ฬ	อ	ฮ	ย
0xC0	0xC1	0xC2	0xC3	0xC4	0xC5	0xC6	0xC7	0xC8	0xC9	0xCA	0xCB	0xCC	0xCD	0xCE	0xCF
0x0E20	0x0E21	0x0E22	0x0E23	0x0E24	0x0E25	0x0E26	0x0E27	0x0E28	0x0E29	0x0E2A	0x0E2B	0x0E2C	0x0E2D	0x0E2E	0x0E2F
ะ	ั	า	ำ	เ	อ	โ	อ								฿
0xD0	0xD1	0xD2	0xD3	0xD4	0xD5	0xD6	0xD7	0xD8	0xD9	0xDA	0xDB	0xDC	0xDD	0xDE	0xDF
0x0E30	0x0E31	0x0E32	0x0E33	0x0E34	0x0E35	0x0E36	0x0E37	0x0E38	0x0E39	0x0E3A					0x0E3F
เ	แ	โ	ใ	ไ	า	ำ									๑
0xE0	0xE1	0xE2	0xE3	0xE4	0xE5	0xE6	0xE7	0xE8	0xE9	0xEA	0xEB	0xEC	0xED	0xEE	0xEF
0x0E40	0x0E41	0x0E42	0x0E43	0x0E44	0x0E45	0x0E46	0x0E47	0x0E48	0x0E49	0x0E4A	0x0E4B	0x0E4C	0x0E4D	0x0E4E	0x0E4F
อ	๑	๒	๓	๔	๕	๖	๗	๘	๙	๐	๑				
0xF0	0xF1	0xF2	0xF3	0xF4	0xF5	0xF6	0xF7	0xF8	0xF9	0xFA	0xFB	0xFC	0xFD	0xFE	0xFF
0x0E50	0x0E51	0x0E52	0x0E53	0x0E54	0x0E55	0x0E56	0x0E57	0x0E58	0x0E59	0x0E5A	0x0E5B				

**NOTE**

- Thai has many letters which are made up with multiple Unicodes (superimposed characters). However, GP recognizes each Unicode as one letter. As a result, letters drawn on GP-Pro EX may look differently on GP.

e.g.) “Hello”

GP-Pro EX	On GP
	

- You cannot use Thai superimposed characters for the Key Part.

## 6.2.2 Setup Procedure

- NOTE**
- For “Japanese Standard Font”, “English Standard Font”, and “English Stroke Font”, you do not have to add/delete fonts (the following steps 1 - 4). Start by setting the text.
  - Please refer to the settings guide for details.
    - ☞ “9.12.1 Text Settings Guide” (page 9-75)
  - For more information about text, please refer to “9.3 Writing Text” (page 9-23) .

These fonts are used normally.

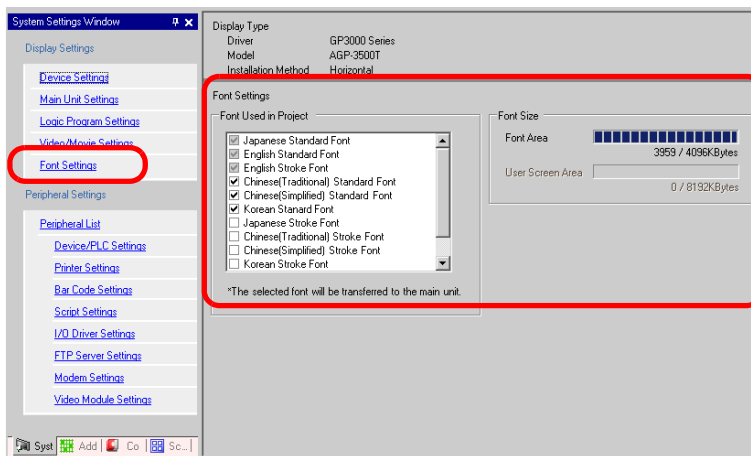
The stroke font can be freely enlarged.

The standard font displays even small sized characters well.

(e.g.) Text in stroke font

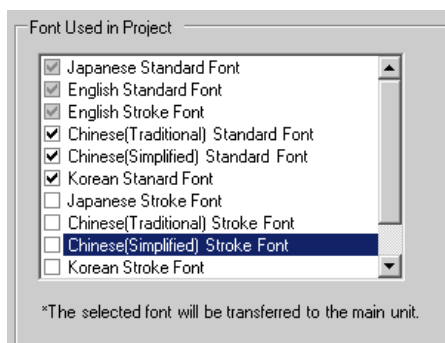
“Chinese (Simplified)” 设定输入画面

- 1 Select GP-Pro EX’s [System Settings Window] menu - [Font Settings] command and then the [Font Settings] screen is displayed.

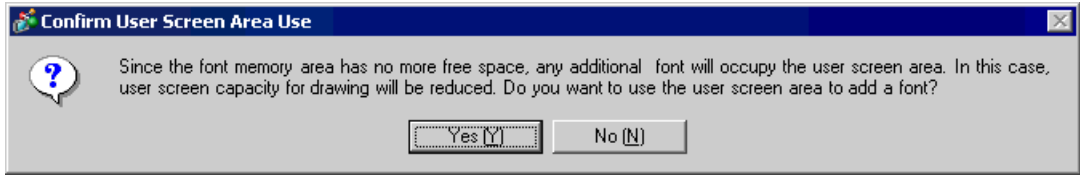


- NOTE**
- If the [System Settings Window] tab is not displayed in the Work Space, select the [View (V)] menu - [Work Space (W)] option - [System Settings Window (S)] command.

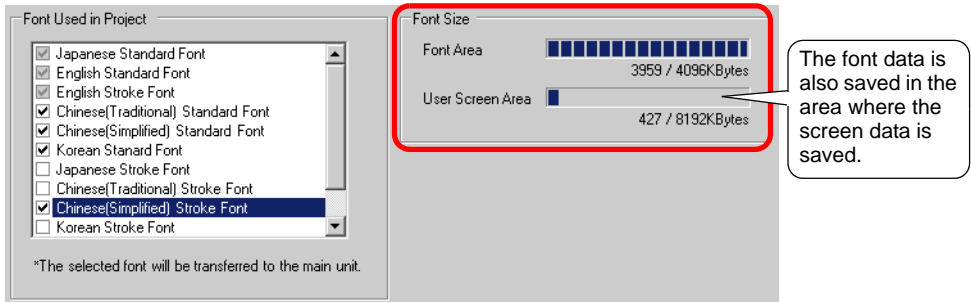
- 2 Select the [Chinese (Simplified) Stroke Font] check box in the [Font Used in Project] to add the font.



3 When you place a check mark, the following message is displayed.

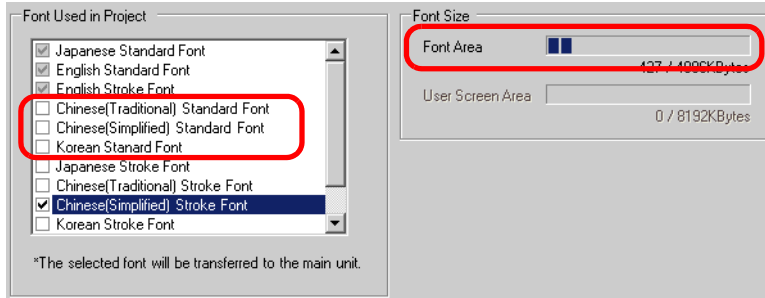


Click [Yes] to save the font data that the [Font Area] cannot store in the [User Screen Area] or to adjust the Font Area later as in the step 4. If you click [Yes], you can confirm that the User Screen Area is also used.

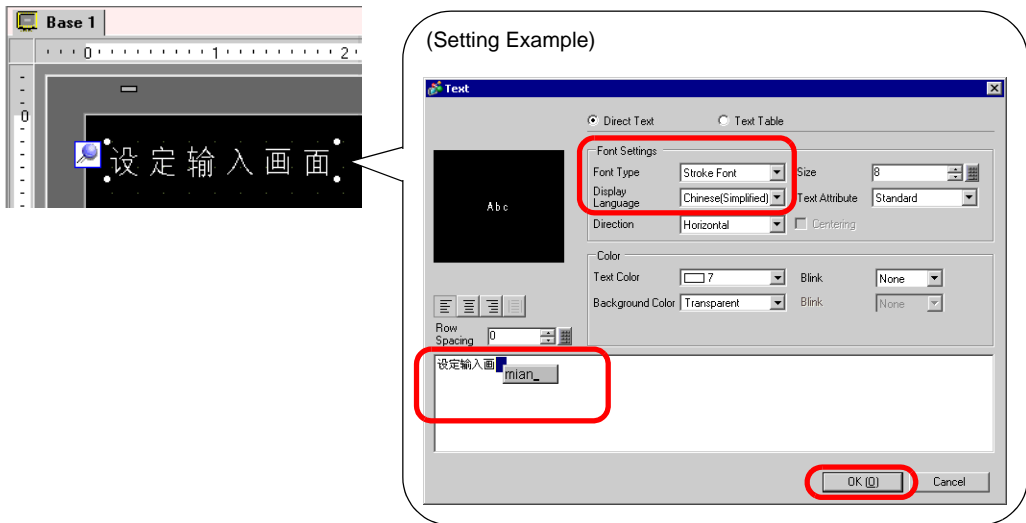


Click [No] to cancel adding the font.

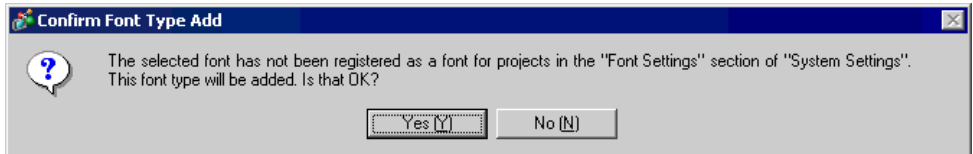
4 Clear the check box for the fonts you are not using. This allows more free space in the Font Area.



5 Let's draw a text taking Chinese (Simplified) Stroke Font as an example. Place the text in the drawing area and double-click. Select [Stroke Font] for the [Font Type], and [Chinese (Simplified)] for the [Display Language], and set to Roman Letter Input. Click [OK] to close the [Text] dialog box.



- NOTE**
- The moment you select the [Stroke Font] in [Font Type] or the moment you change the [Display Language], the following dialog box may be displayed. This is to confirm whether or not to add the font type, because a switch has been set before adding the font.



To add the font, click [Yes].

If you click [No], adding the font is cancelled. If you transfer the text in this state to the GP, the set text cannot be displayed.

## 6.3 Image Font

### 6.3.1 Details

This font is used to draw with a Windows font.

You can use bold and italics as well as the standard style.

“Arial/Italic”

*Image Font*

“Arial Black”

**Image Font**

“Helvetica//Bold”

**Image Font**

---

#### IMPORTANT

- You can select this font only when [Direct Text] is set in the part's label/text.
- 

#### ■ Text Feature

- You can display characters with various Windows fonts.  
Displays a Windows font as a bitmap.

*Image Font*

e.g.: “Arial/Italic”

- Text displays well regardless of enlargement/reduction or the text size.  
For example, if the placement size is enlarged by increasing the number of characters in the text, the text is displayed with the set font and text size.

12345



**12345**

- Can be used for bold/italics.
- Using too much of this font restricts the User Screen Area capacity.  
The image font uses the User Screen Area.  
Taking a lot of memory by using larger character sizes or more characters may cause restrictions to create a screen.

From the [Project (F)] menu, verify [Properties (I)] - [Project Information (I)] - [Send Data] - [Send Size], and make sure not use too many Image Fonts.

---

#### NOTE


- The User Screen Area's capacity depends on the GP model.  
☞ “1.3 List of Supported Functions by Device” (page 1-4)
-

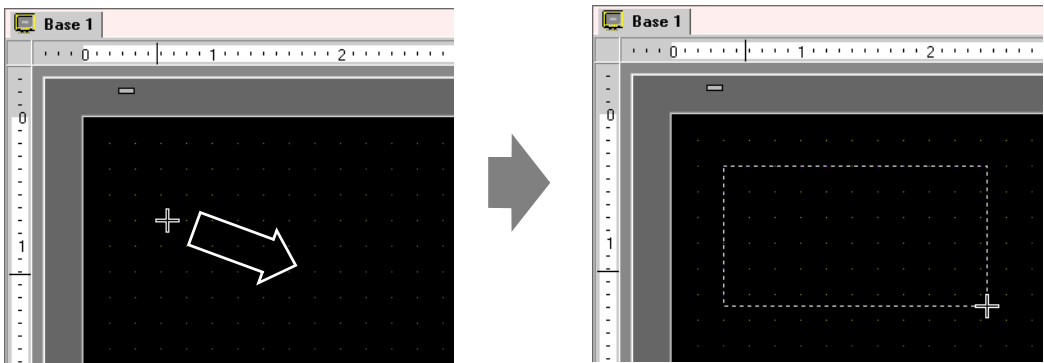
## 6.3.2 Setup Procedure

- NOTE** • Please refer to the settings guide for details.  
 ☞ “9.12.1 Text Settings Guide” (page 9-75)

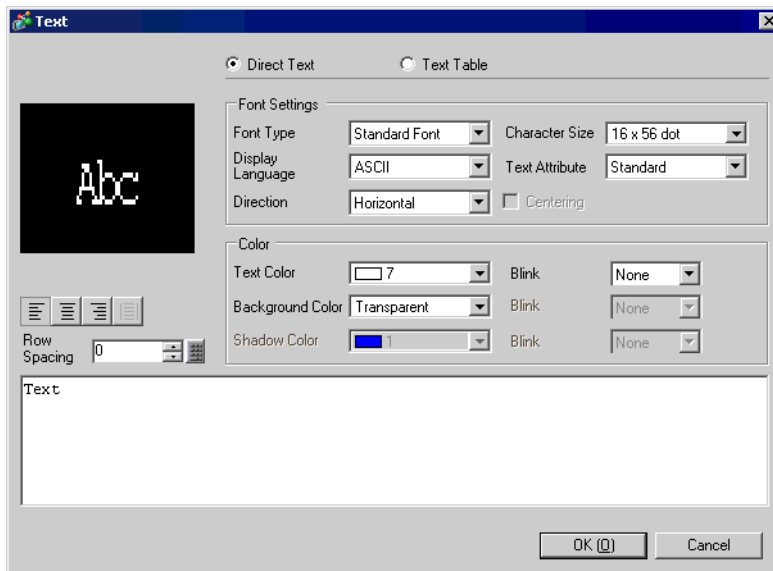
Use the “Image Font”. You can use bold and italics as well as the standard style.  
 “Arial/Italic”

*Image Font*

- 1 Select [Text (S)] from the [Draw (D)] menu or click . Click on the base screen and drag to get a desired size.

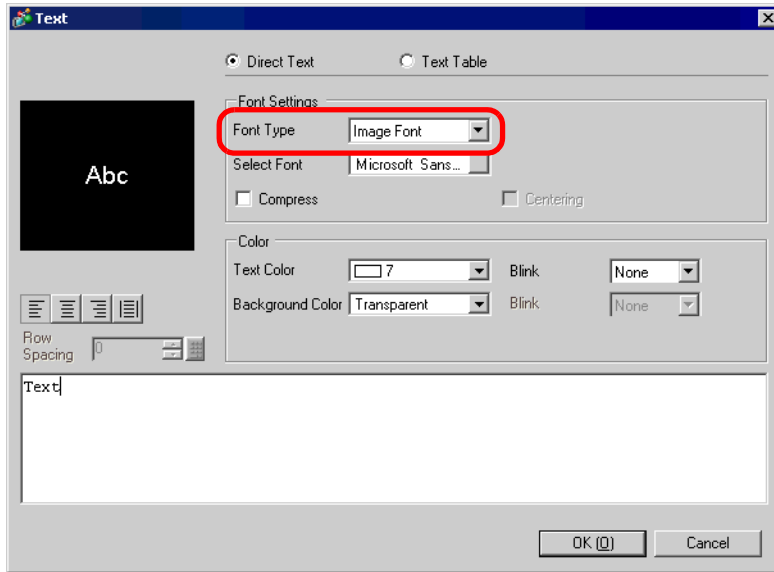


- 2 Place the text and then right-click it to release the text’s draw mode. Double-click the placed text and the setting dialog box will be displayed.

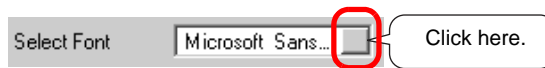




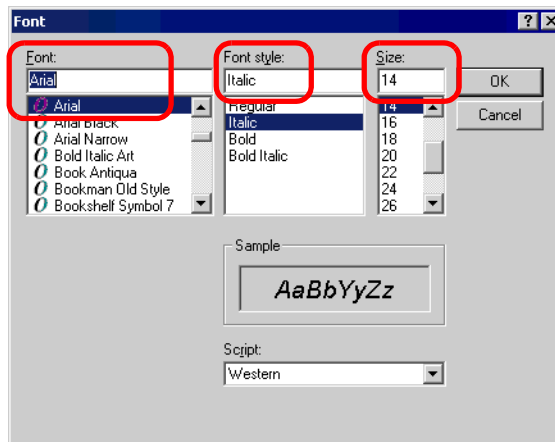
### 3 Select [Image Font] for the [Font Type].



### 4 Click the [Select Font]’s pull-down button to display the setting dialog box.

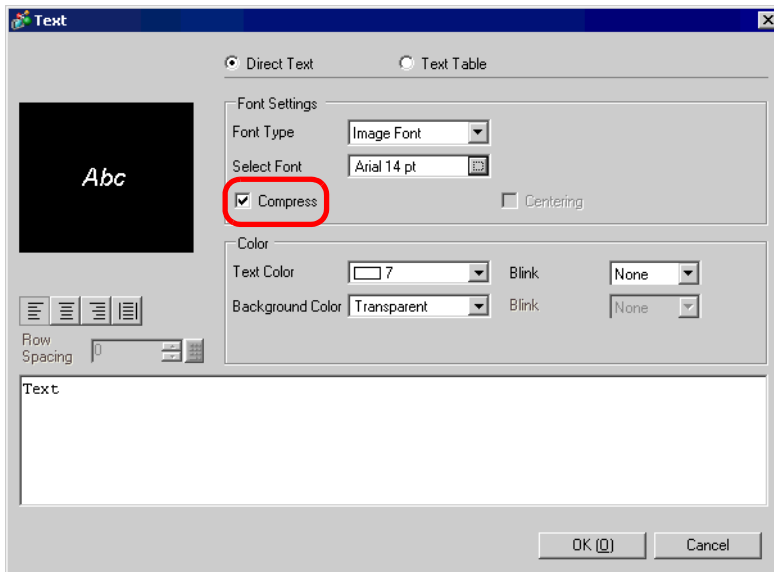


### 5 Select [Font] (e.g.: “Arial”), [Font Style] (e.g.: “Italic”), and [Size] (e.g.: “14”), and click [OK].



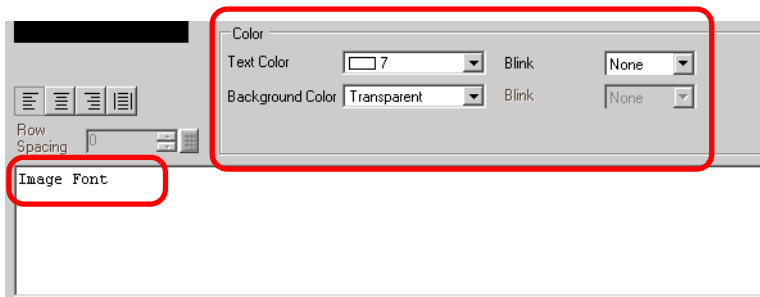
**NOTE** • If you use vertical text, select a font for vertical text (beginning with @ “e.g.: @MS Gothic”) for the font.

6 Put a check mark next to the [Compress] box. The font volume will be compressed by about 1/2, depending on characters.

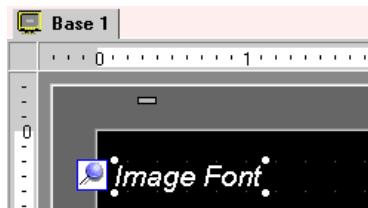


**NOTE** • [Compress] is recommended for reducing the project file volume.

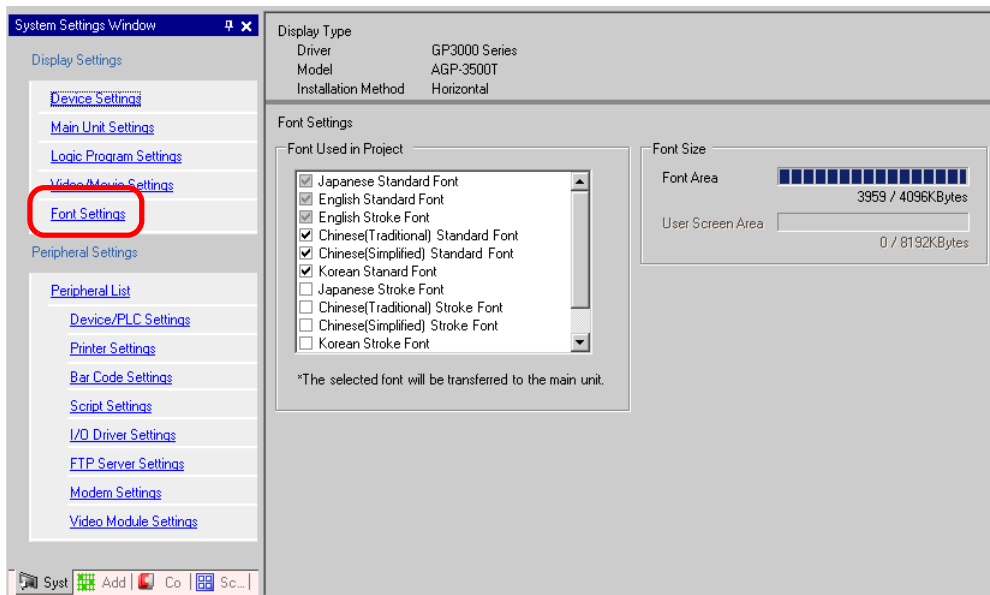
7 Select the colors you want and input text in the Input Text border.



8 Click [OK] and the setting are completed.



## 6.4 [Font Settings] Settings Guide



Setting	Description
Font Settings	Configure font settings.
Font Used in Project	Select the fonts used in project files. <div style="border: 1px solid black; padding: 2px; display: inline-block; margin-bottom: 5px;"><b>NOTE</b></div> <ul style="list-style-type: none"> <li>You cannot release [Japanese Standard Font], [English Standard Font], or [English Stroke Font] because they are standard-supplied fonts.</li> </ul>
Font Size	Displays the memory size of the font.
Font Area	Displays the memory size being used in the font area from 0/4096 Kbytes to 4096/4096 Kbytes.
User Screen Area	Display the memory size of the font you are using in the User Screen area. The size of the User Screen area depends on the model of GP. "1.3 List of Supported Functions by Device" (page 1-4)

## 6.5 Restrictions

---

### 6.5.1 Restrictions for Standard Font

---

- When [ASCII] is selected for the [Standard Font]'s [Display Language], you can select a text size you want from the three fixed sizes [6 × 10 dot], [8 × 13 dot], and [13 × 23 dot].
- When the [Character Size] is [6 × 10 dot] fixed size, you cannot select [Bold] from the [Text Attribute].
- When you display the text registered in a text table on a part with a [Fixed Size], refer to the Western text table and select/add the part's text. Text on a table without Western language settings cannot be properly displayed.
- If you change the font type to [Standard Font] for the part label or text inputted with [Stroke Font], the text may not be displayed.
- If you compare the display on GP-Pro EX and the GP main unit, there may be slight differences in the appearance of the standard font letters. This is caused by the fact that the standard font uses a Windows font and displays it in GP-Pro EX.

---

### 6.5.2 Restrictions for Image Font

---

- [Image Font] is a bit map image. You cannot set the [Display Language], [Text Type], or Vertical Text (where the [Direction] is [Vertical]).