

System Monitor Update Guide for PS5000

2017, November
Schneider Electric Japan Holdings Ltd.






Overview

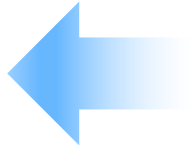


Download of New System Monitor

Download the update program from the link below.

http://www.pro-face.com/otasuke/download/ps/ps5000/system_monitor.htm

 SystemMonitorAgentSetup_Pro-face
 SystemMonitorDriver_Pro-face
 SystemMonitorServerSetup_Pro-face



Download the three files on the left. Copy them to the PS5000 Series. For how to use, see the update procedures 1 to 3 that will be described later.

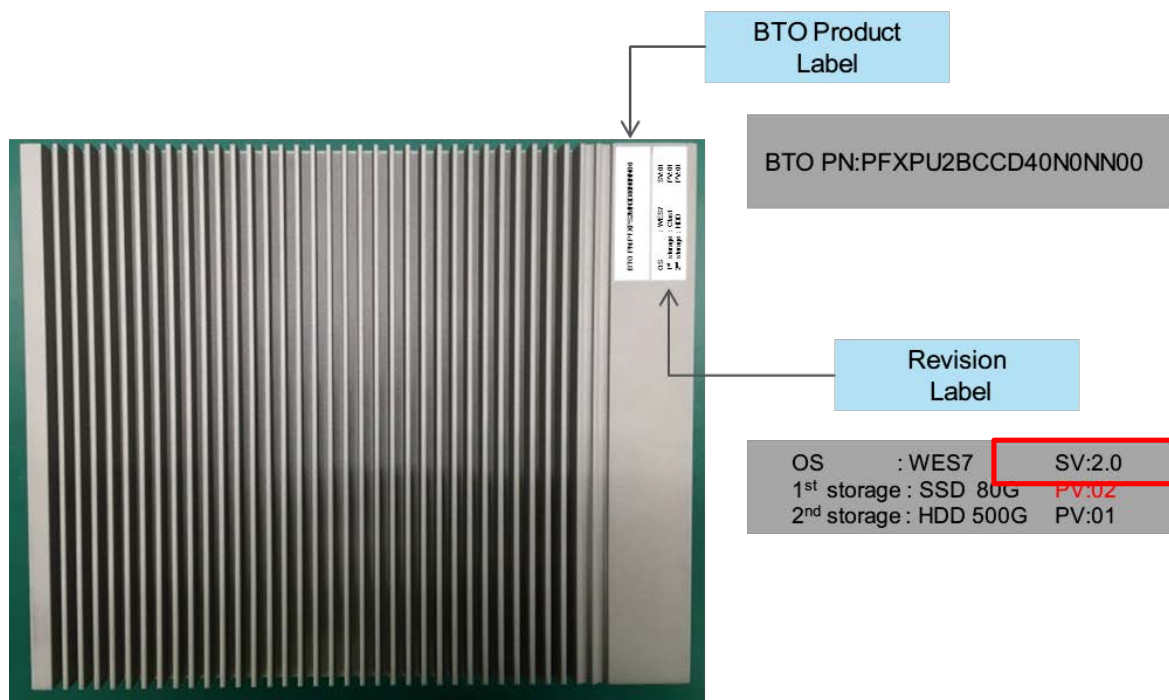
Overview



How to confirm target goods

Confirm with revision of SV

For BTO products, the revision of SV was indicated below.



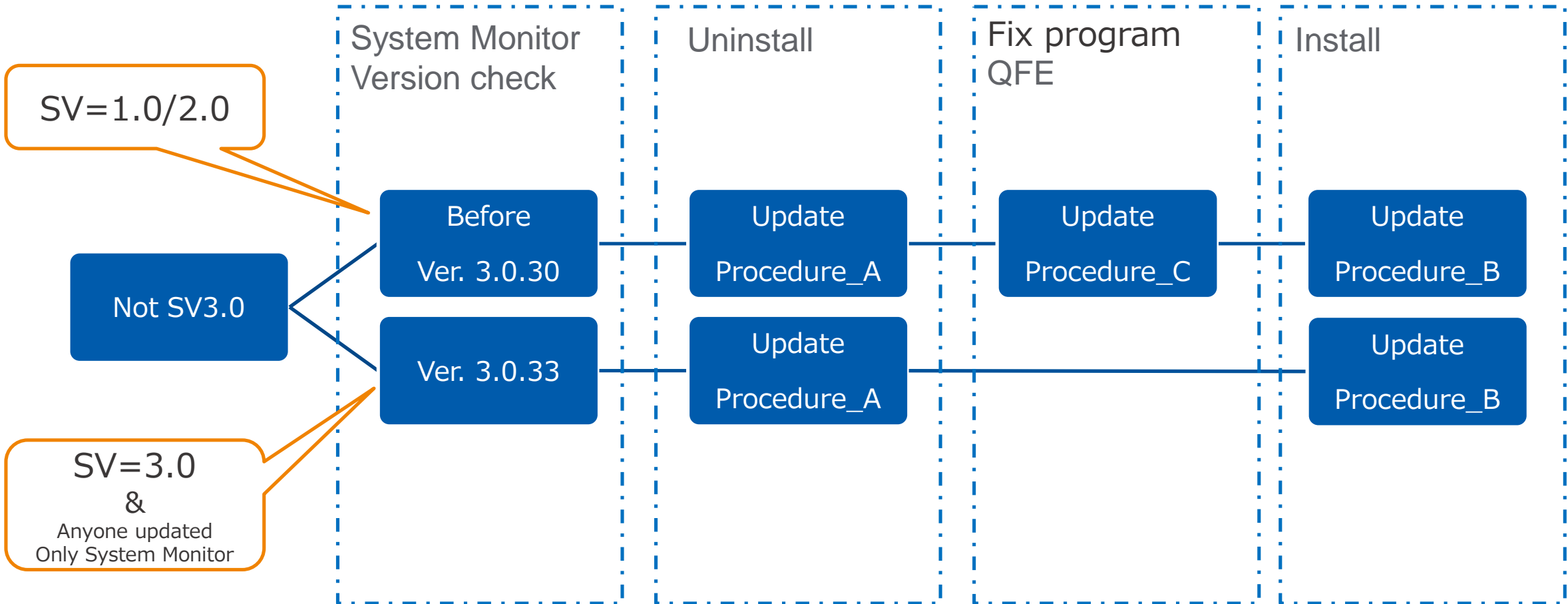
If you can see below SV, you should update.

OS	SV
Windows® Embedded Standard 7 (64ビット)	1.0 to 3.0
Windows® 7 Ultimate (64ビット)	1.0 to 3.0
Windows® Embedded 8.1 Industry (64ビット)	1.0 to 3.0

Overview

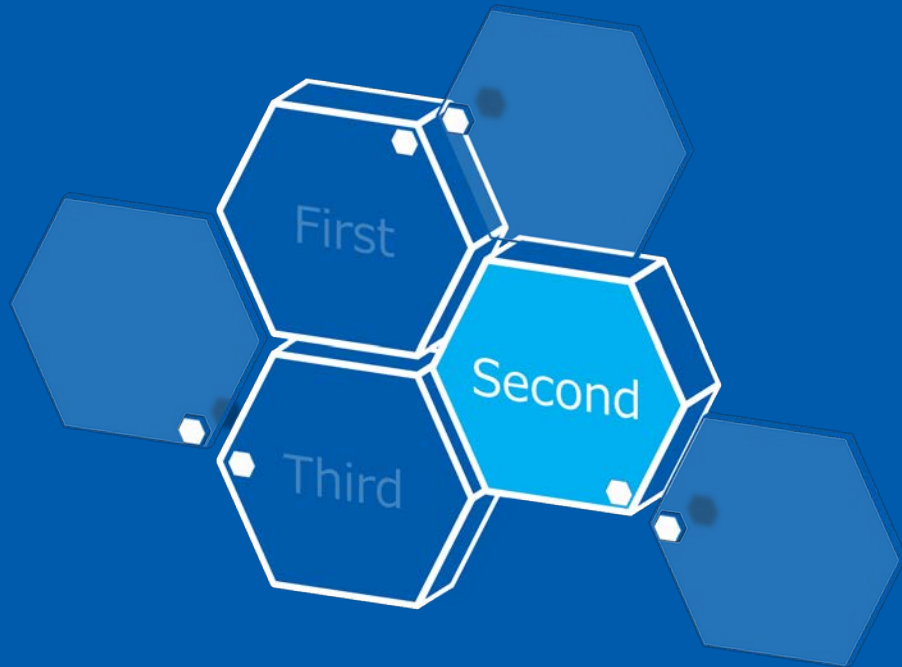


Procedure to update new System Monitor

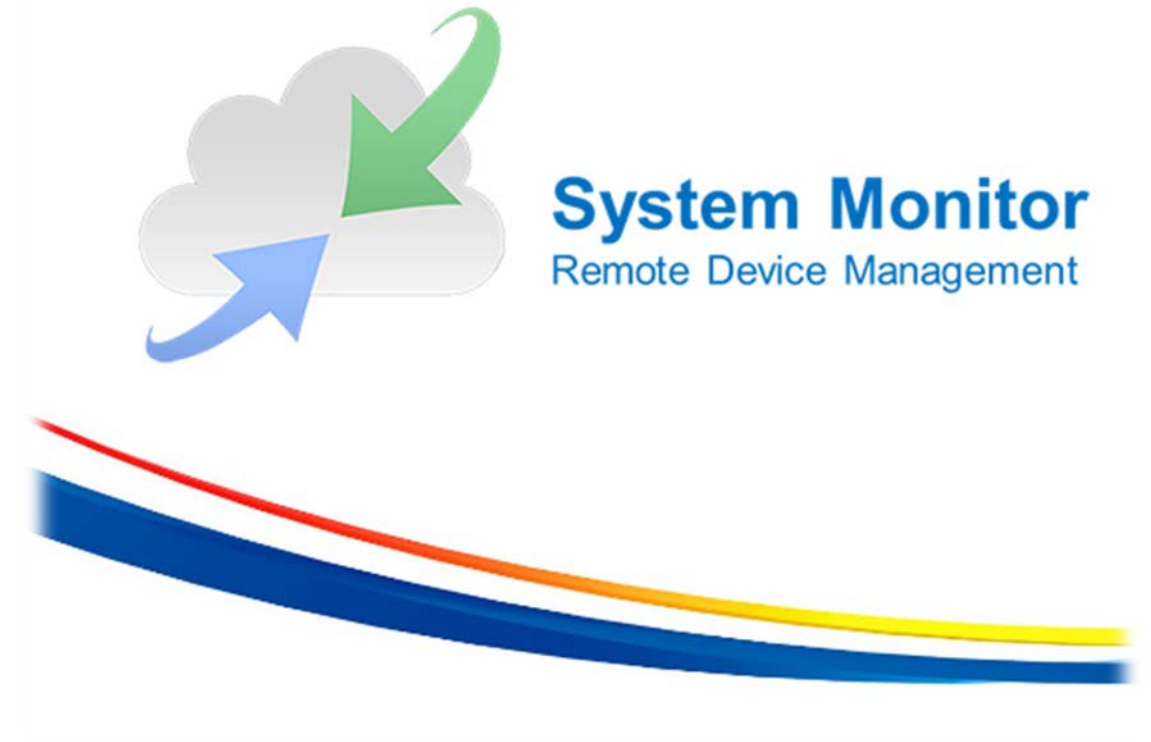


Update Procedure_A

Uninstall the old System Monitor.

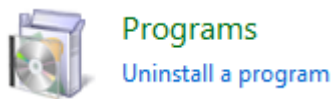


* Uninstall it following the steps.
Following the different order might result in failing to end properly.



Update Procedure_A – Uninstall the old System Monitor.

- 1. Select Windows [Start] – [Control Panel] – [Uninstall a program].



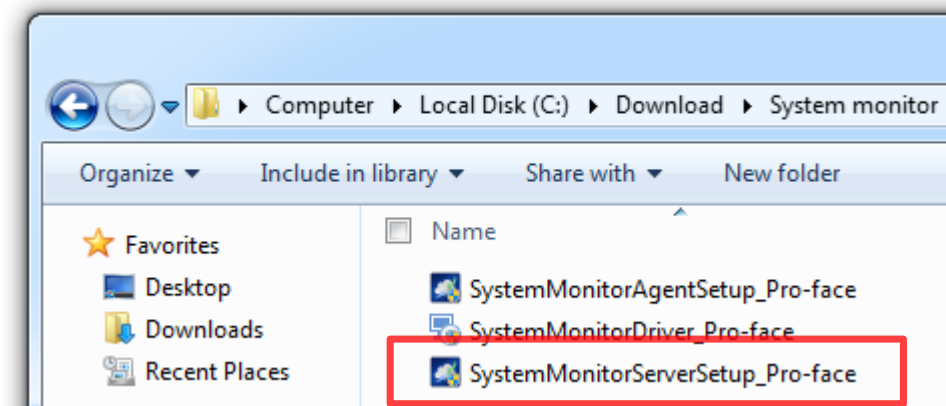
- 2. If the version of the installed System Monitor is for the old one, go to 3.
* If it's already for the new System Monitor, this step is not necessary. Close [Uninstall a program] to end the work.

PenMount Windows USB Driver V2.4.4.34b Rev.3	PenMount	1/28/2017		
PostgreSQL 9.2 (x86)	PostgreSQL Global Developmen...	7/28/2017	133 MB	9.2
Pro-face Remote HMI Server	Digital Electronics Corporation	4/26/2015	12.2 MB	1.10.000
psqlODBC	PostgreSQL Global Developmen...	8/13/2015	3.76 MB	09.02.0100
Realtek High Definition Audio Driver	Realtek Semiconductor Corp.	7/28/2017		6.0.1.7512
SUSI	Pro-face	8/13/2015	2.12 MB	4.0.12861.0
System Monitor Server	Pro-face	10/20/2015	73.4 MB	3.0.30
System Monitoring Agent	Pro-face	10/20/2015	14.4 MB	3.0.30

3.0.34 : New System Monitor Version

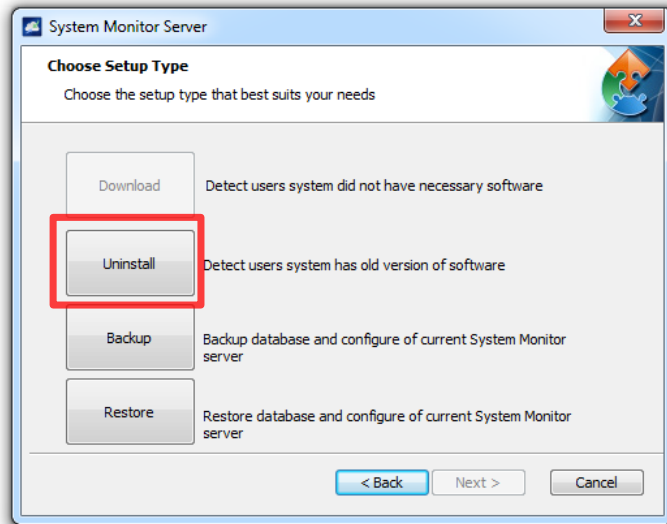
Update Procedure_A – Uninstall the old System Monitor.

3. Execute the downloaded file, “SystemMonitorServerSetup_Pro-face”.



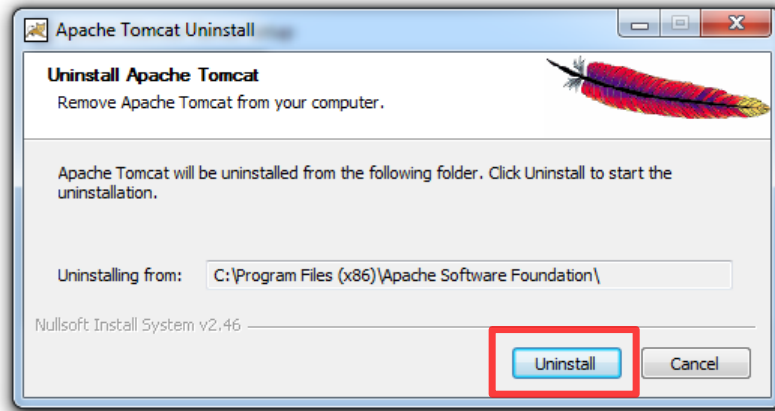
* Uninstall the System Monitor Server using the downloaded file instead of [Uninstall a program].

4. The following window appears while it's being executed. Select [Uninstall].

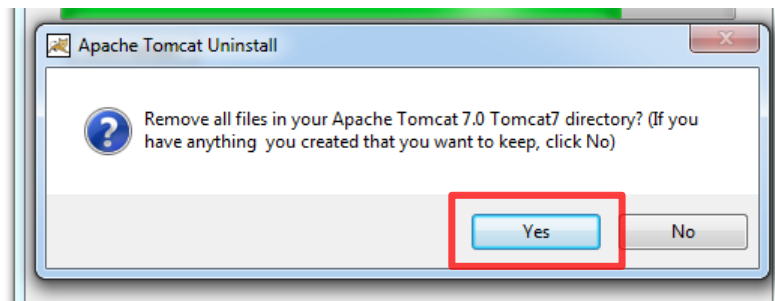


Update Procedure_A – Uninstall the old System Monitor.

5. The Apache Tomcat Uninstall window appears while it's being executed. Select [[Uninstall](#)].

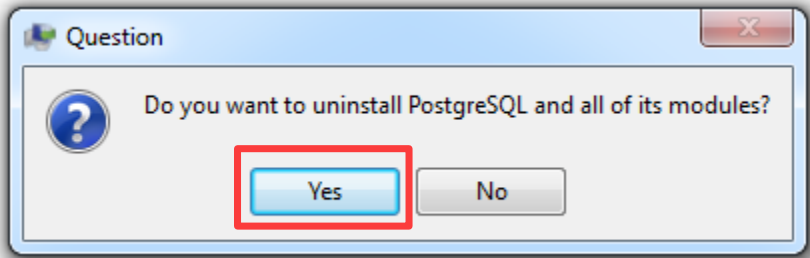


6. You are asked if you remove all files or choices are displayed. Select [[Yes](#)]. Uninstallation of "Apache Tomcat" is completed.

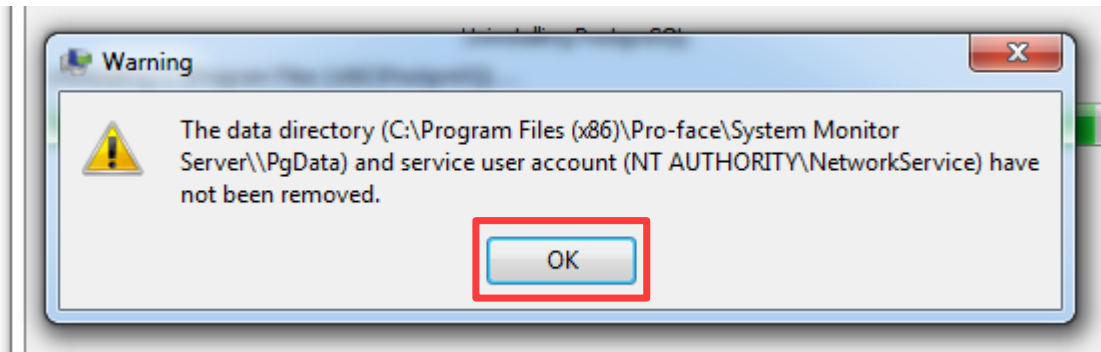


Update Procedure_A – Uninstall the old System Monitor.

7. The following window appears while the “Apache Tomcat” is being removed. Select [Yes].



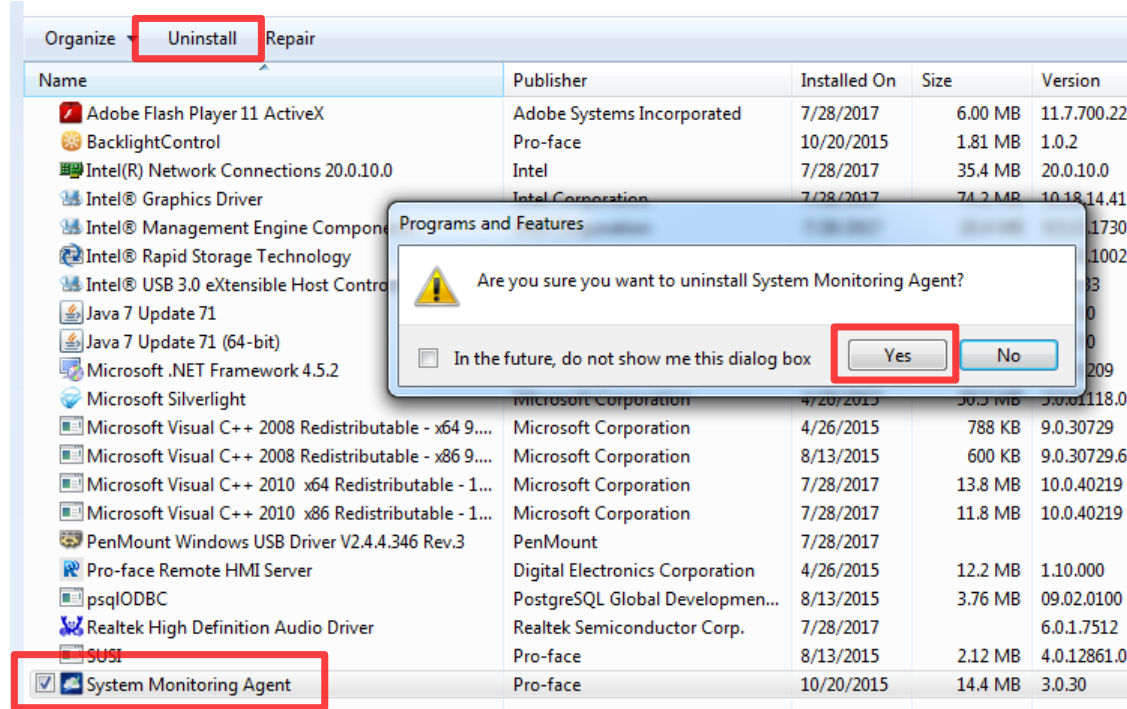
8. When the following window appears, press [OK].



9. Uninstallation of the System Monitor Server is completed.

Update Procedure_A – Uninstall the old System Monitor

10. On [Uninstall a program], select “**System Monitoring Agent**” and press [Uninstall].
The following window appears. Select [Yes]. The process of uninstallation is completed.

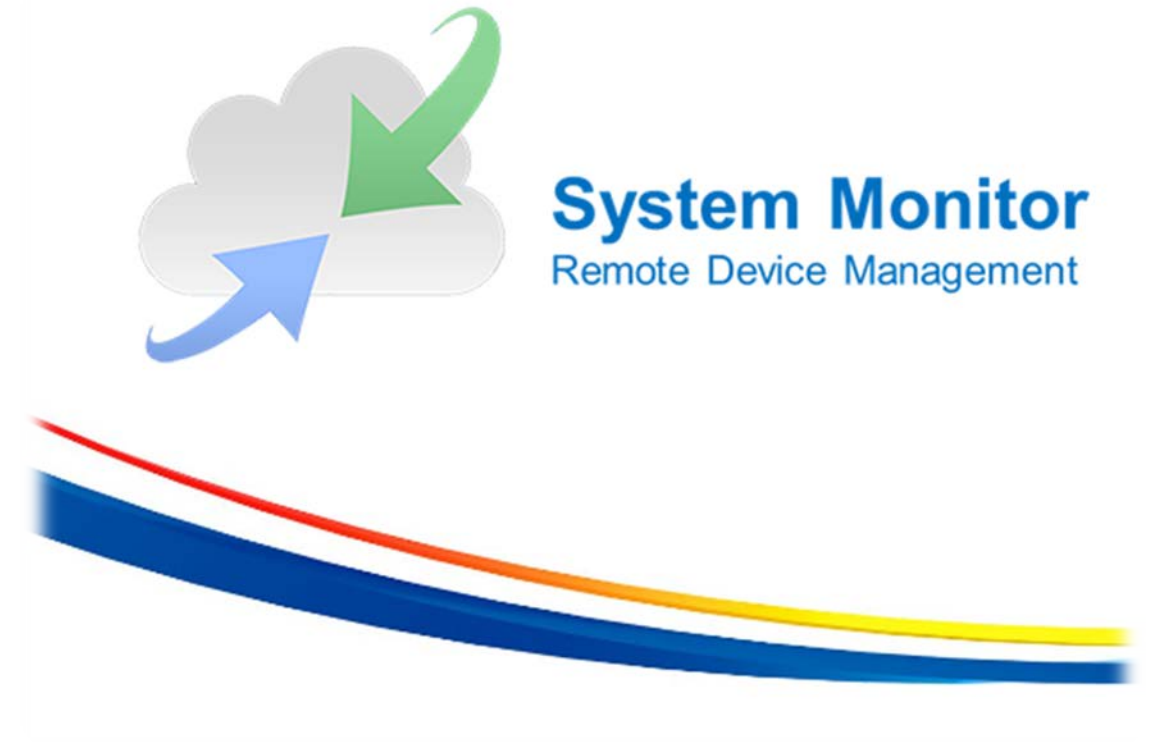


11. Uninstall “**SUSI**” following the same step as 10.

psqlODBC	PostgreSQL Global Development...	8/13/2015	3.76 MB	09.02.0100
Realtek High Definition Audio Driver	Realtek Semiconductor Corp.	7/28/2017	6.0 MB	6.0.1.7512
SUSI	Pro-face	8/13/2015	2.12 MB	4.0.12861.0

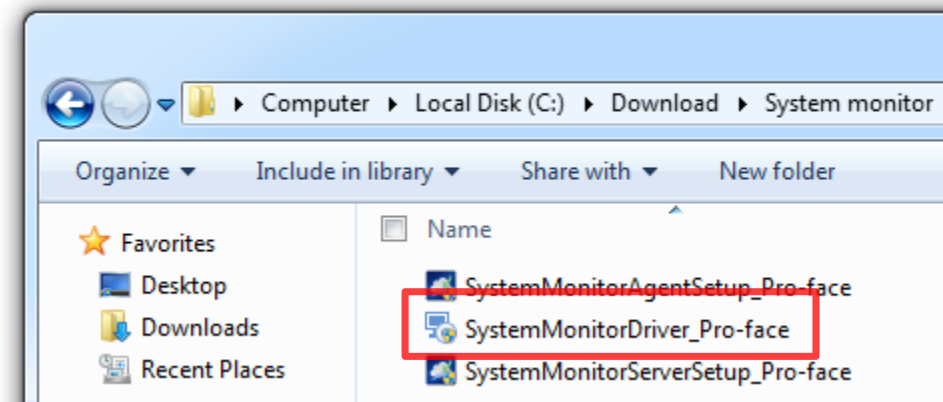
Update Procedure_B

Install the new System Monitor.

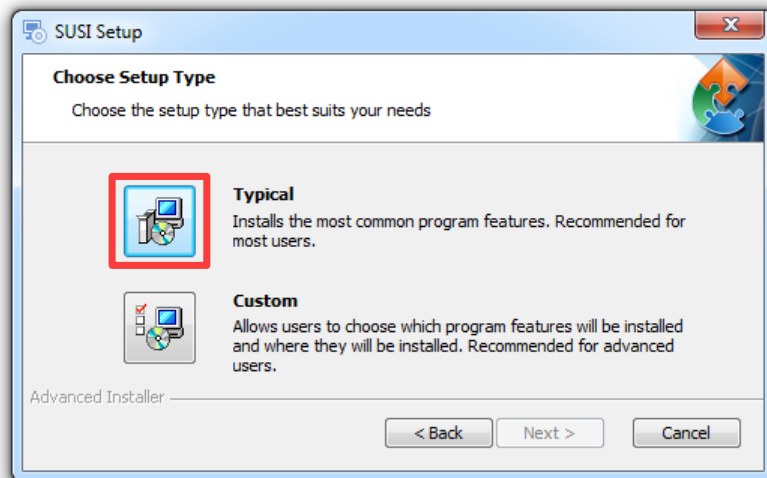


Update Procedure_B – Install the new System Monitor.

1. Execute the downloaded file for the new one, “SystemMonitorDriver_Pro-face”.



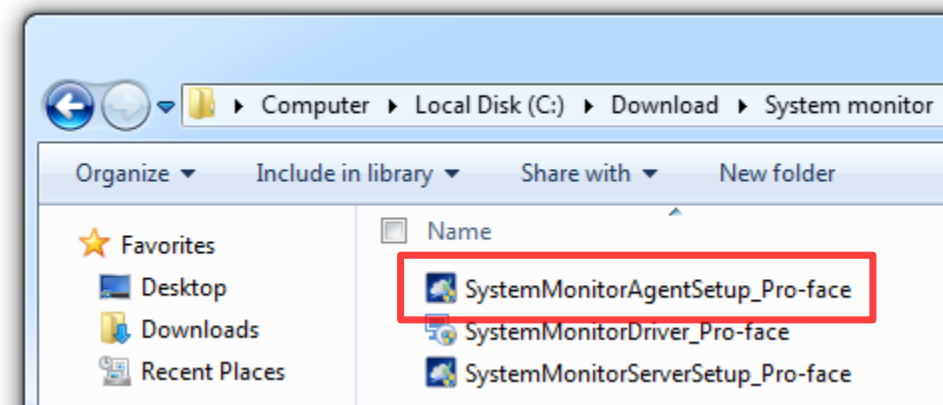
2. When a setup type of window appears while the file is being executed, select [Typical] to proceed.



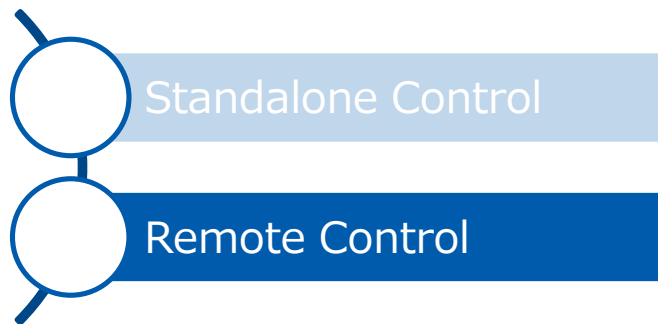
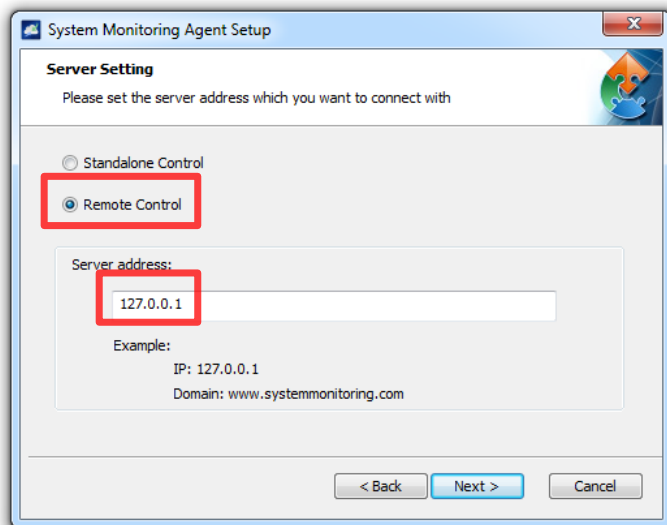
3. Installation of SUSI (System Monitor Driver) is completed.

Update Procedure_B – Install the new System Monitor.

4. Execute the downloaded file for the new one, “SystemMonitorAgentSetup_Pro-face”.



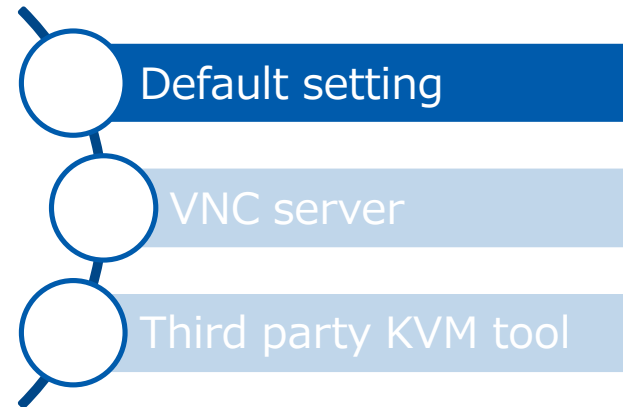
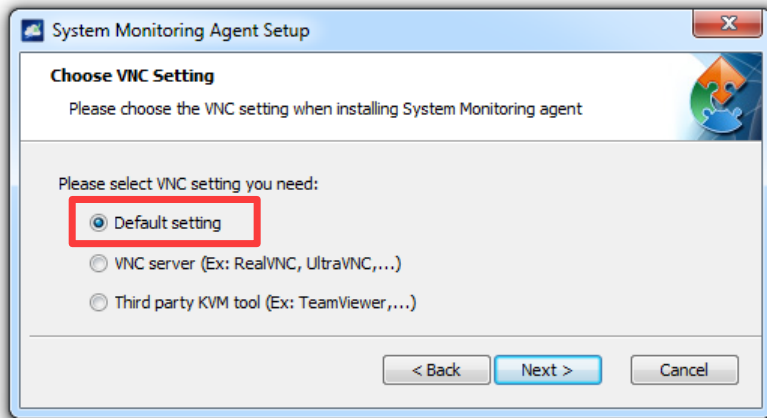
5. When the server setup window appears while the file is being executed, configure the following setting.



Server address :
127.0.0.1

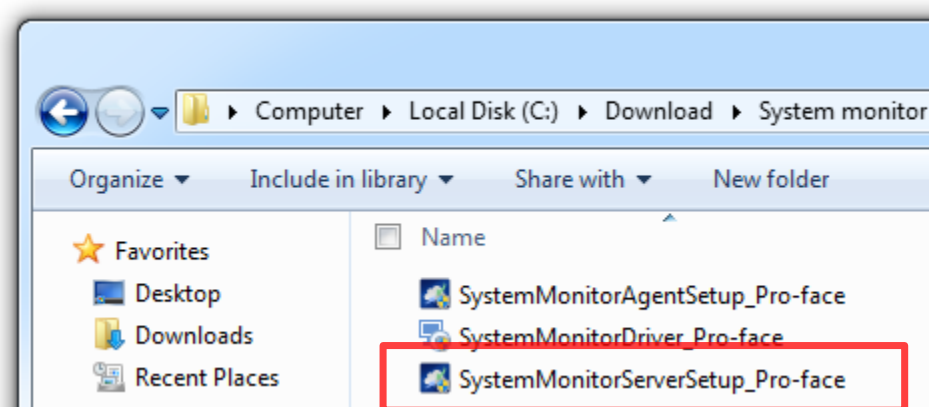
Update Procedure_B – Install the new System Monitor.

6. When the VNC Setting window appears, select “Default Setting” to proceed.



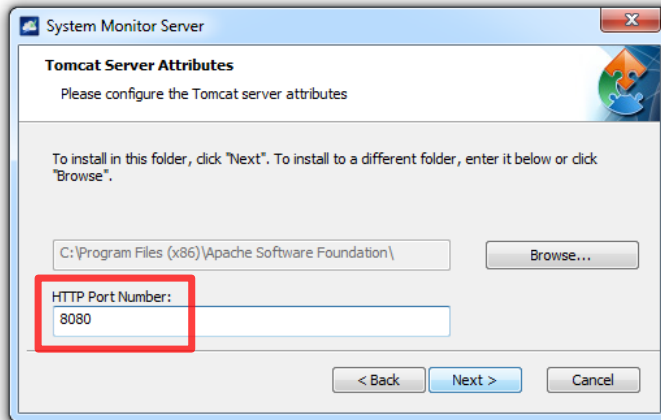
7. Installation of the System Monitoring Agent is completed.

8. Execute the downloaded file for the new one, “SystemMonitorServerSetup_Pro-face”.



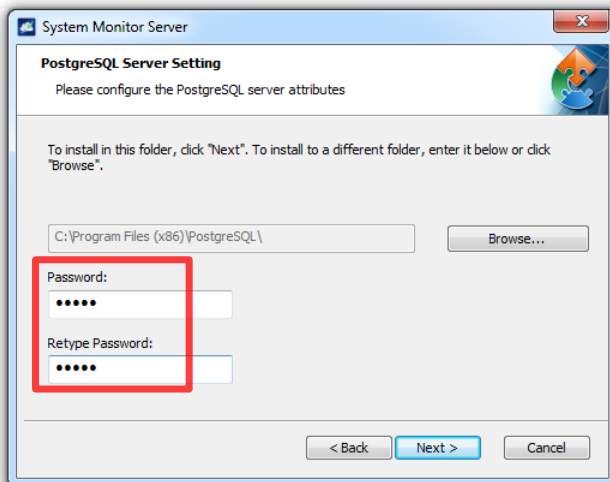
Update Procedure_B – Install the new System Monitor.

9. When the Tomcat Server Setting window appears while the file is being executed, proceed with the following setting.



HTTP Port Number : 8080

10. When the PostgreSQL Server Password Setting window appears, enter the password as shown below and proceed.



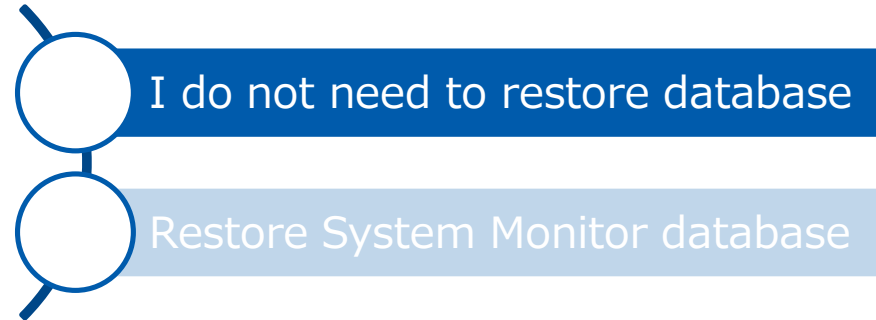
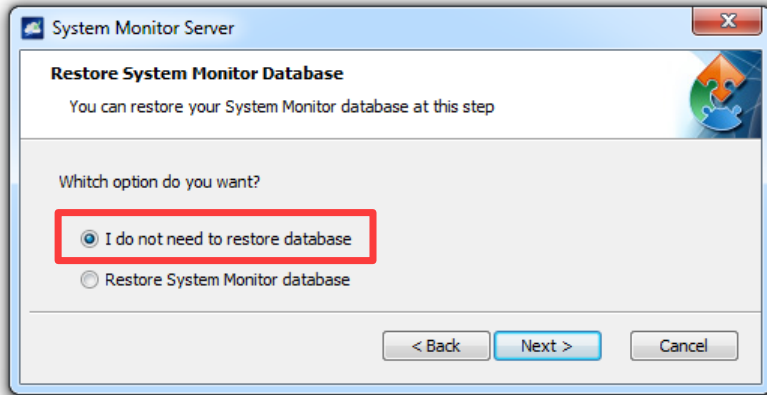
Password : admin *

Retype password : admin

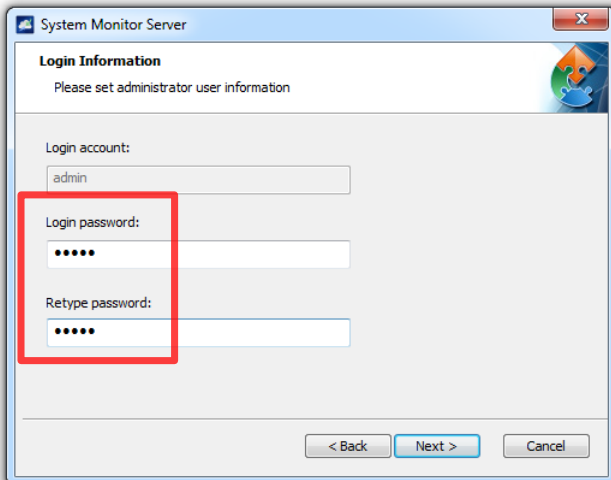
* It is the password specified on the System Monitor at shipping from the factory. If another password exists for management, enter it.

Update Procedure_B – Install the new System Monitor.

11. When the window related with recovery of the database appears, select the following to proceed.



12. When the System Monitor Server Password Setting window appears, enter the password as shown below and proceed.



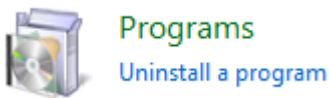
Login Password : admin *

Retype password : admin

* It is the password specified on the System Monitor at shipping from the factory. If another password exists for management, enter it.

Update Procedure_B – Install the new System Monitor.

- 13. Installation of the System Monitor Server is completed.
- 14. Select Windows [Start] – [Control Panel] – [Uninstall a program].



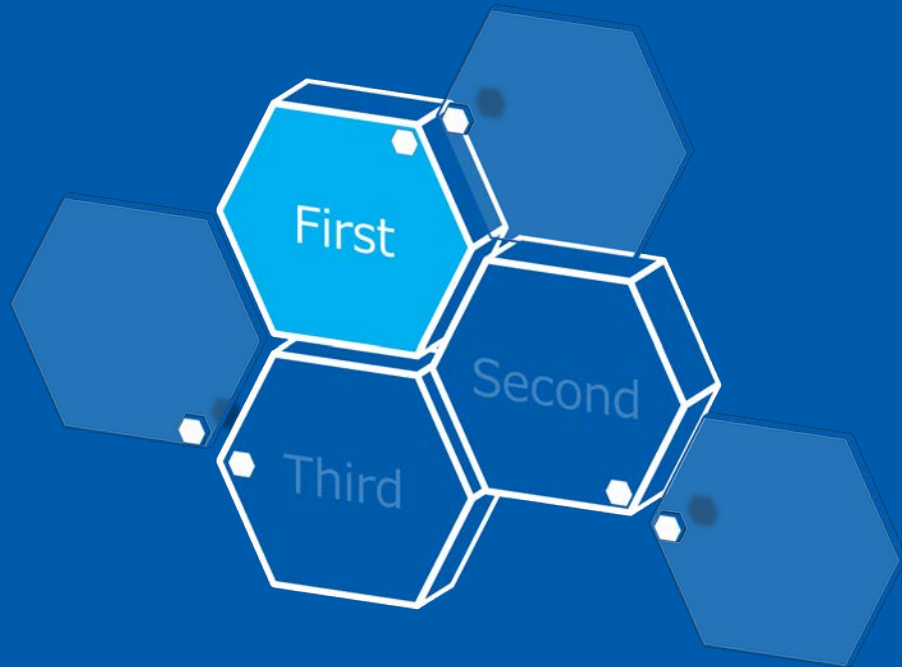
- 15. Make sure that the version of the installed System Monitor is for the new one.

PenMount Windows USB Driver V2.4.4.346 Rev.3	PenMount	1/28/2017		
PostgreSQL 9.2 (x86)	PostgreSQL Global Developmen...	7/28/2017	133 MB	9.2
Pro-face Remote HMI Server	Digital Electronics Corporation	4/26/2015	12.2 MB	1.10.000
psqlODBC	PostgreSQL Global Developmen...	8/13/2015	3.76 MB	09.02.0100
Realtek High Definition Audio Driver	Realtek Semiconductor Corp.	7/28/2017		6.0.1.7512
SUSI	Pro-face	7/28/2017	2.20 MB	4.0.14441.0
System Monitor Server	Pro-face	7/28/2017	74.1 MB	3.0.34
System Monitoring Agent	Pro-face	7/28/2017	14.4 MB	3.0.34

3.0.34 : The version of System Monitor

Update Procedure_C

Install hotfix (QFE).



In order to run new System Monitor compatible, it's necessary to support SHA-2 digital signature. Access the Microsoft site and install the update program to Windows.

* For a Win8.1 environment, this step is not necessary.
Go to the update procedure_B.

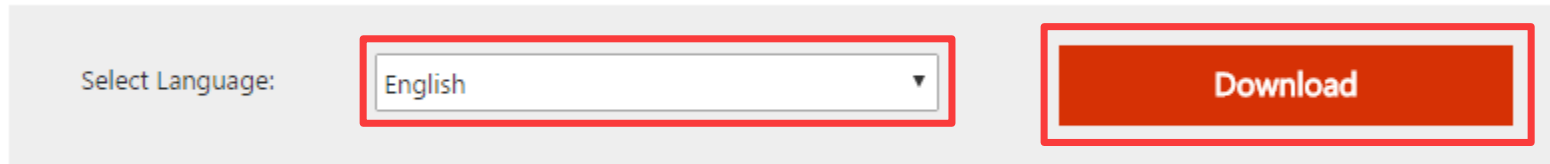


Update Procedure_C – Install hotfix (QFE).

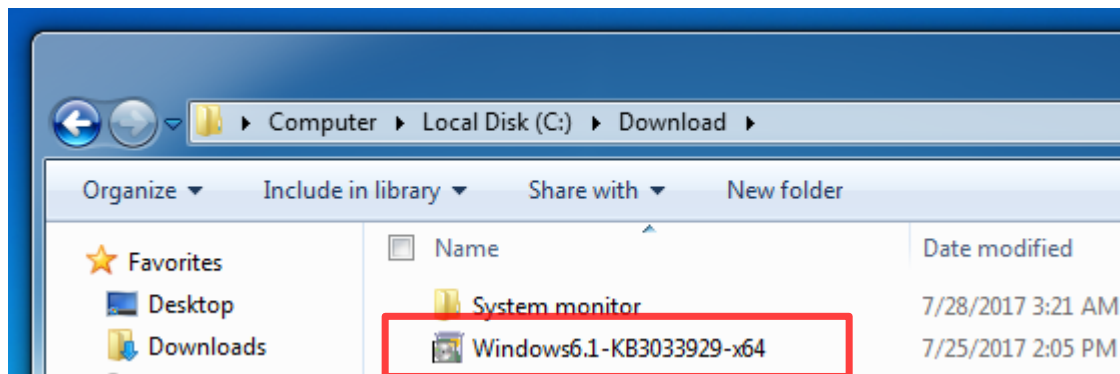
1. Access the Microsoft site below.

<https://www.microsoft.com/en-US/download/details.aspx?id=46148>

2. Scroll the screen to find the following display. Select the OS language you are using and click on the Download button.

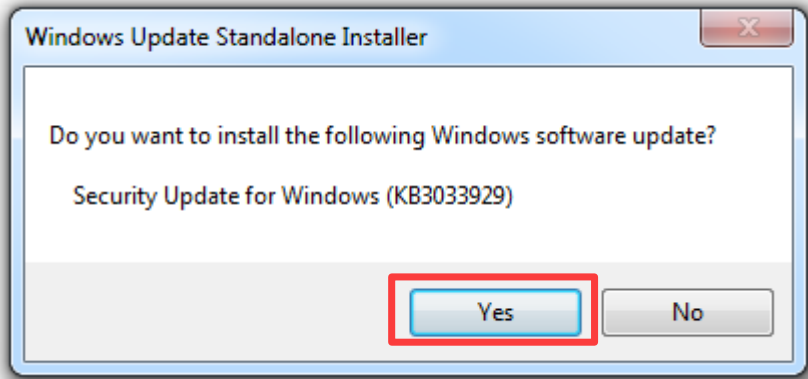


3. Copy the downloaded file called “[Windows6.1-KB3033929-x64.msu](#)” to any folder of the PS5000 and execute it.

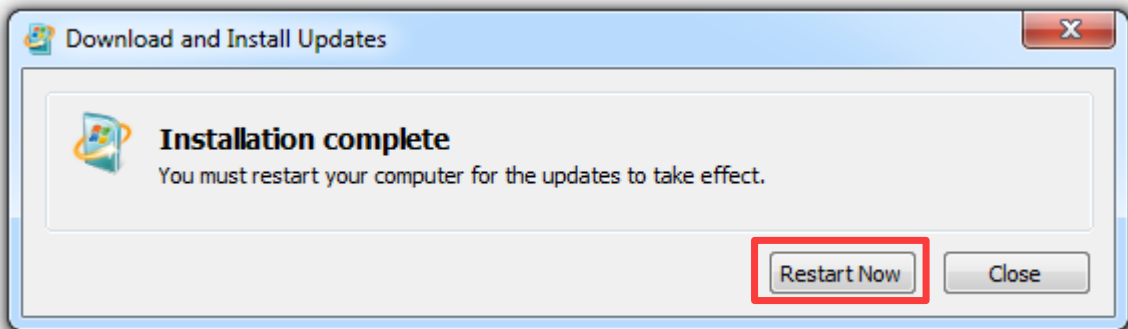


Update Procedure_C - Install hotfix (QFE).

4. The following window appears. Click on the [Yes] button.



5. The update program is installed. After the installation is completed, click on [Restart Now] to restart Windows.





Pro-face

by **Schneider** Electric