

Chapter 12

WinGP

Chapter 12 WinGP

12. 1	WinGP	
	WinGP.....	12-3
12. 2	Settings on IPC	
	Settings on IPC	12-5
12 .3	Settings on PC for Screen Creation	
	Settings on PC for screen creation	12-7
	Acquire WinGP Information or Operate WinGP from User Application	12-9

12. 1

WinGP

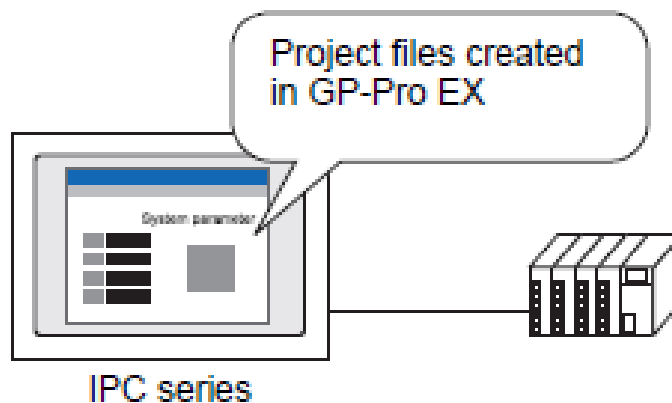


Instruction

WinGP

WinGP

WinGP is an application(*1) that can perform the functions of GP3000 on an industrial panel computer (IPC Series) manufactured by Digital Electronics Corporation. WinGP enables operations of the GP3000 series on an IPC and interaction with software applications on the IPC.



If a PC is used to control equipments such as precision machines at a factory site, for example, WinGP enables control, operation, and history management of the equipment using image pictures of the GP series.

Using WinGP, you can use the IPC as a simple SCADA (Supervisory Control And Data Acquisition) system.

See → GP-Pro EX Reference Manual 38.1.1 “What is WinGP?”

See → GP-Pro EX Reference Manual 38.1.3 “Differences between IPC and GP”

NOTE

- To use WinGP on an IPC or a computer (PC/AT compatible), a separately sold license is required.
- Some functions, mainly functions which depend on hardware, cannot be performed by a IPC.

See → GP-Pro EX Reference Manual
38.1.3 Differences between IPC and GP

12.2

Settings on IPC

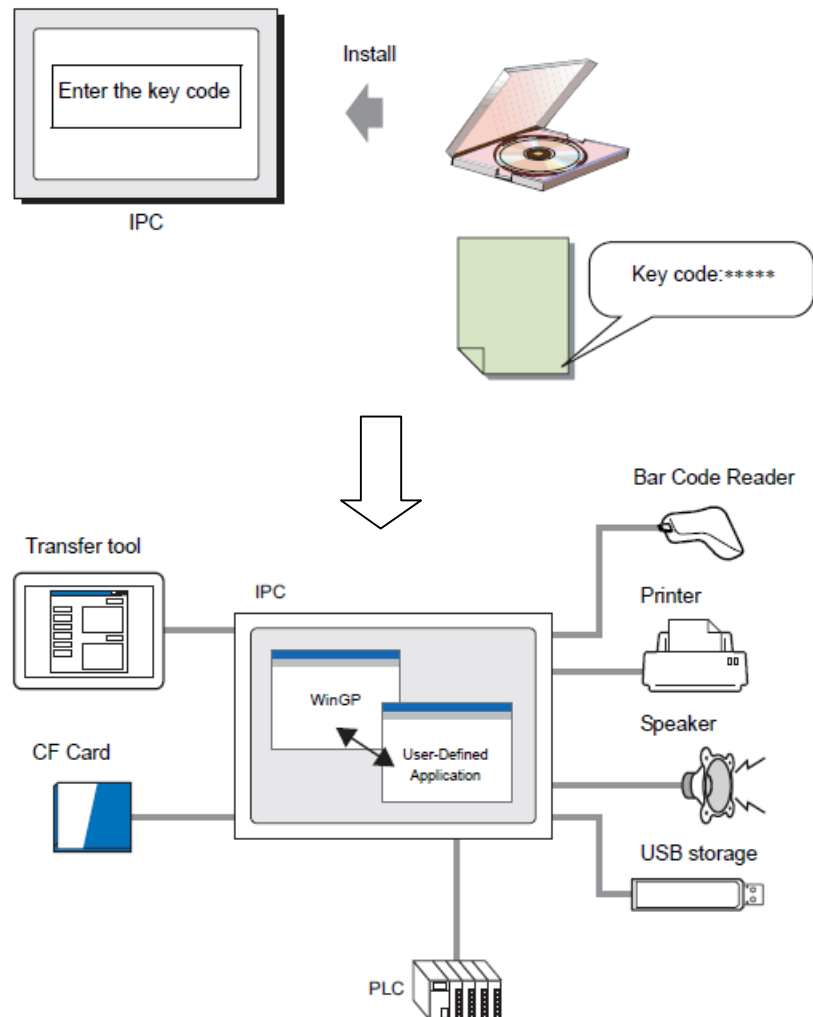


Instruction

Settings on IPC

Insert CD-ROM of GP-Pro EX Version 2.0 or higher in the CD-ROM drive. Enter a key code, required to purchase separately, and install WinGP on an IPC.

See → GP-Pro EX Reference Manual 38.3.2 “Install/Uninstall”



NOTE

- To create screens on the same IPC, install the screen creation software, GP-Pro EX as well.
- If you use Pro-Server EX at the same time, make sure to use Pro-Server EX Version 1.10.
If you already use Pro-Server EX Version 1.0, please upgrade it to Version 1.10, otherwise you cannot use WinGP at the same time.

See → GP-Pro EX Reference Manual 38.3 “Development Process”

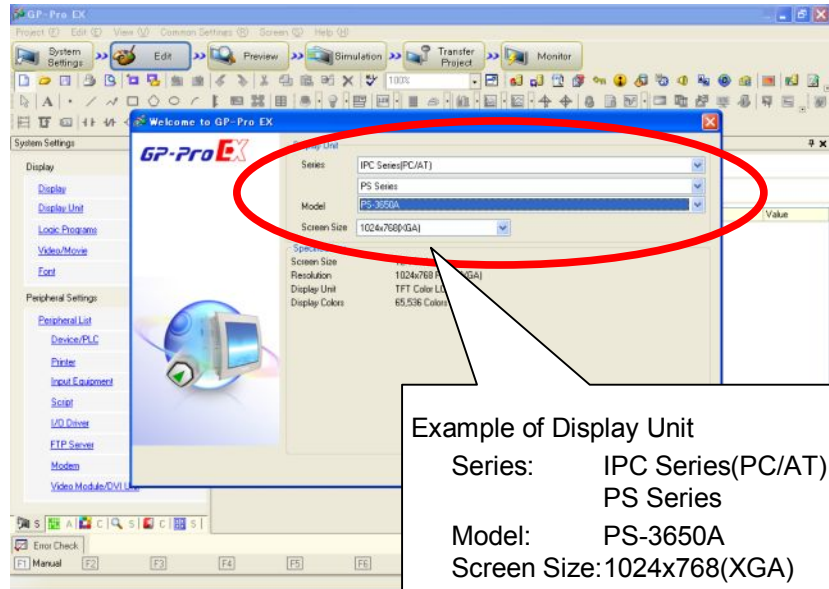
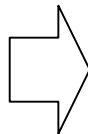
12.3

**Settings on PC
for Screen Creation**

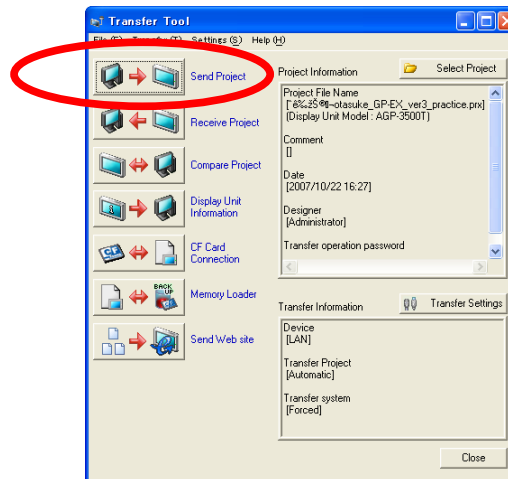


Settings on PC for Screen Creation

- 1) Start up GP-Pro EX (version 2.0 or higher) and create screen data for the IPC series.



- 2) Transfer the screen data to the IPC series.



NOTE

1. Operations for the IP series on GP-Pro EX such as screen creation and data transfer are the same as operations for the GP3000 series. However, you need to start up WinGP on the IPC before transferring screen data.
2. Some functions, mainly functions which depend on hardware, cannot be performed by a IPC.

See → GP-Pro EX Reference Manual
38.1.3 Differences between IPC and GP

★ One Point

How to change display units

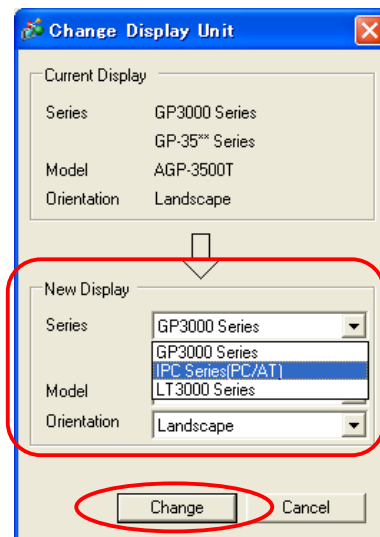
- 1) Open the created project file and select "Display Unit" in the System Settings window.



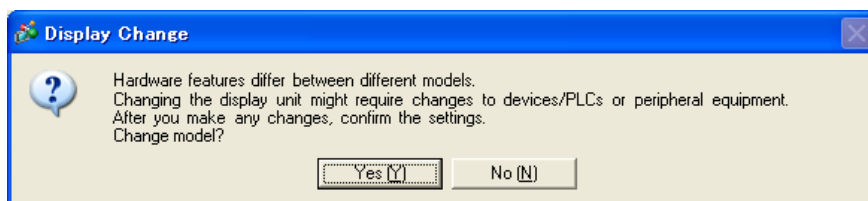
- 2) Click [Change Display Unit] and change the display type to the IPC series.



- 3) Specify [Series] and [Model] of the new display. *



* If you change the display type between the GP series and the IPC series, the following confirmation message will appear.





Instruction

Acquire WinGP Information or Operate WinGP from User Application

API allows you to acquire WinGP information or operate WinGP from user applications.

See → GP-Pro EX Reference Manual

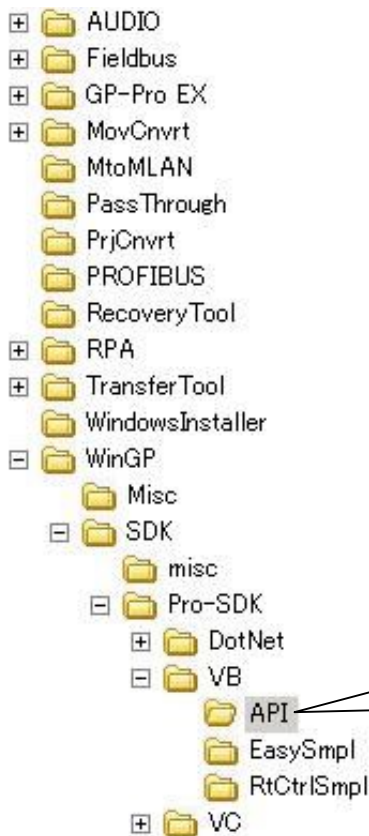
38.5 “Retrieve WinGP information or Operate WinGP from user application”

- 1) Copy the header file, which concludes the declaration statement in it, from the CD-ROM.

The following procedure is an example for Visual Basic.

\\WinGP\\SDK\\Pro-SDK\\VB\\API

- 2) Start Visual Basic. Select one or both of the files in the above mentioned folder as a standard module(s). *

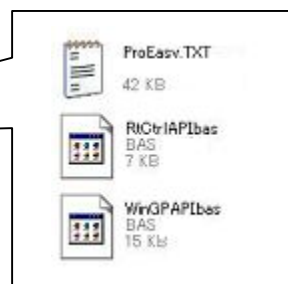


* Each API has different functions which are available.
Select an API according to necessary functions.

WinGPAPI: is a device access API, which is used to read or write internal data of a device/PLC or WinGP.

RtCtrlAPI: is a handling API, which is used to acquire the WinGP status or to change the WinGP settings.

See → GP-Pro EX Reference Manual 38.9 “API Function List”



- 3) Develop a program according to the programming language specifications. The following sample includes the settings required for the API, which are circled.

```
(General) (Declarations)

End If
Error: Exit Sub
End Sub

Private Sub Command3_Click()
Dim i, j As Integer
Dim iResult As Long

For i = 0 To 9
    iResult = ReadDevice16("#WinGP", "USR2500" & i, j, 1)
    Text1(i).Text = j
Next

If iResult Then
    Dim sErrMsg As String * 512
    Dim iMsgResult As Long
    iMsgResult = EasyLoadErrorMessageEx(iResult, sErrMsg)
    MsgBox (sErrMsg)
End If

End Sub

Private Sub Command4_Click()
Dim i, j, k As Integer
Dim iResult As Long

k = 0

For i = 0 To 9
    j = Text1(i).Text
    If j < 30 Or j > 450 Then
        k = 1
    End If
Next
```

- * For the details of each function, see GP-Pro EX Reference Manual.
See → GP-Pro EX Reference Manual 38.9 “API Function List”