

Chapter 11

GP-Viewer EX

Chapter 11 GP-Viewer EX

11. 1 GP-Viewer EX

GP-Viewer EX	11-3
--------------------	------

11. 2 GP-Viewer Settings

Set Up GP-Viewer EX and Set Security Function ...	11-7
Set License on GP Unit	11-9
Install GP-Viewer EX	11-11
Start GP-Viewer EX	11-13

11.1

GP-Viewer EX



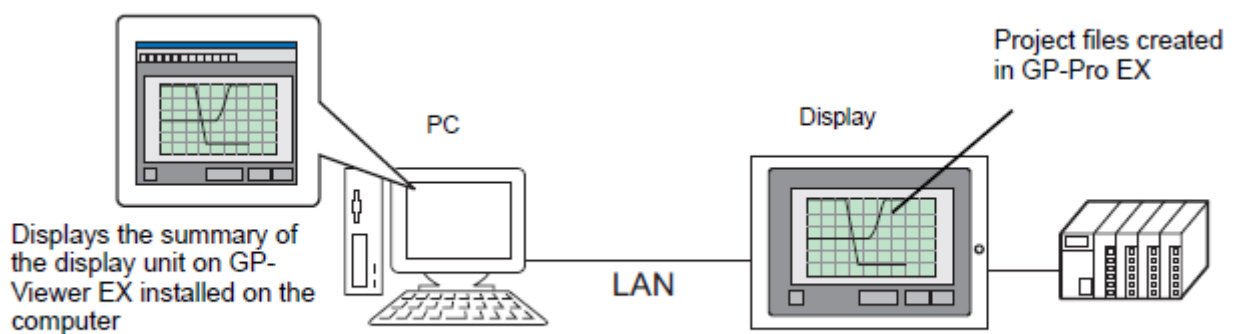
Instruction

GP-Viewer EX

GP-Viewer EX is an application that displays and operates remotely located display screens on a computer. It enables you to recover and monitor activities for troubleshooting and perform daily maintenance.

To use this feature, the computer and the GP unit must be placed on the same network. GP-Viewer EX must be installed on the computer and the license must be set for the GP unit.

GP-Viewer EX can be installed from a GP-Pro EX (version 2.10 or higher) CD-ROM or can be downloaded from our homepage.



See GP-Pro EX Reference Manual 36.1.1 "GP-Viewer EX"



IMPORTANT

Key code (License)

To use GP-Viewer EX, a separate license (Type: EX-VIEWER-LICENSE) is required for each display unit.

The key code cannot be reissued even if lost. Please keep it securely.

**One Point****Screen Mode**

For Screen Mode, there are two types of modes to display GP-Viewer EX: Synchronous Mode and Asynchronous Mode.

The GP-Viewer EX login security level affects GP-Viewer EX operations.

- | | |
|--------------------|--------------------------------------------------------------------------------------------------------------------------------------------|
| Synchronous Mode: | GP-Viewer EX displays the same screen data as the GP unit does. |
| Asynchronous Mode: | GP-Viewer EX displays screen data not depending on the screen changes on the GP unit. It can display different screens from the GP screen. |

Setup Procedure of GP-Viewer EX

1. Create screen data using GP-Pro EX.

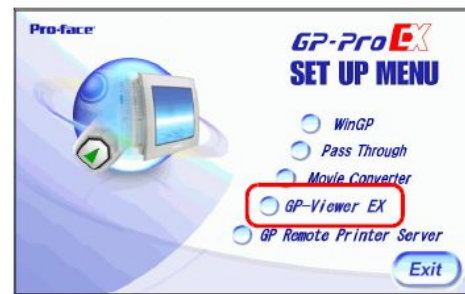
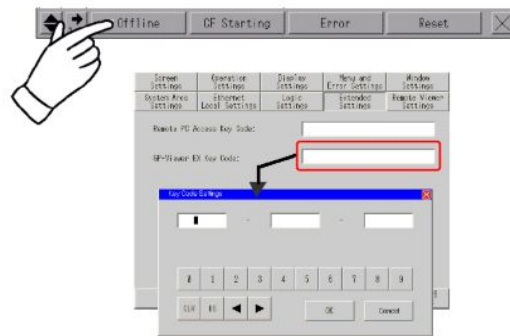
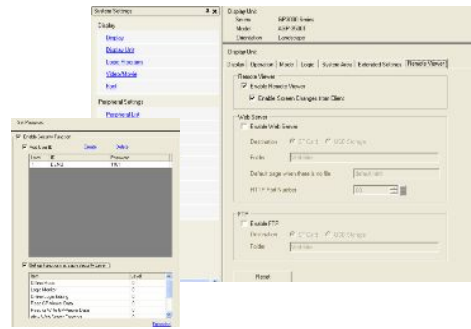
2. Set up GP-Viewer EX security using GP-Pro EX.

3. Transfer the created project file to the GP unit.

4. Set a license on the GP unit.

5. Install GP-Viewer EX on a computer.

6. Start GP-Viewer EX.



11.2

GP-Viewer EX Setup



Instruction

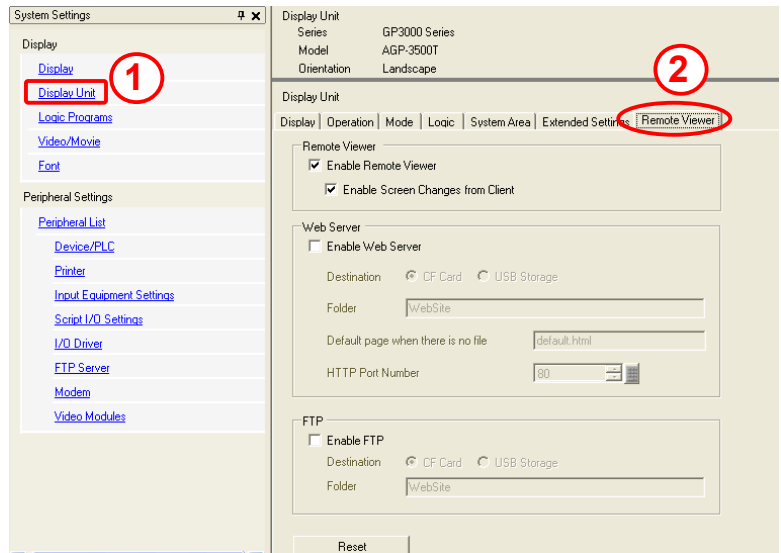
Set Up GP-Viewer EX and Set Security Function

(1) Set up GP-Viewer EX using GP-Pro EX

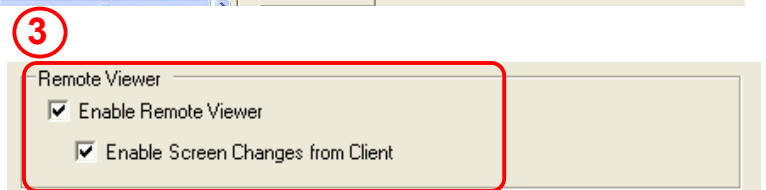
- 1) Create screen data on GP-Pro EX and save it.

On the [System Settings] window, select [Display Unit].

- 2) Select the [Remote Viewer] tab.




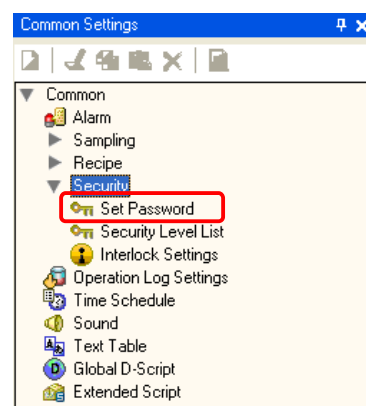
- 3) Check [Enable Remote Viewer] and [Enable Screen Changes from Client].



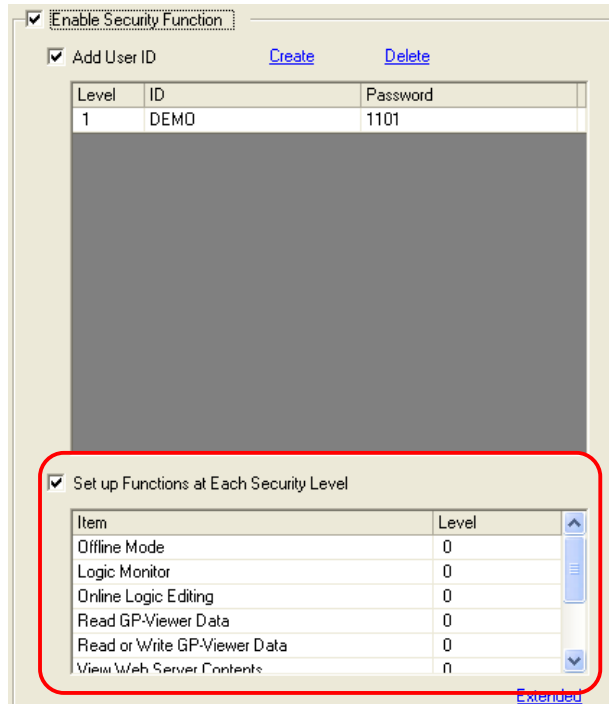
Doing so allows you to change GP screens from the computer by using the GP-Viewer feature.

(2) Set Security Function

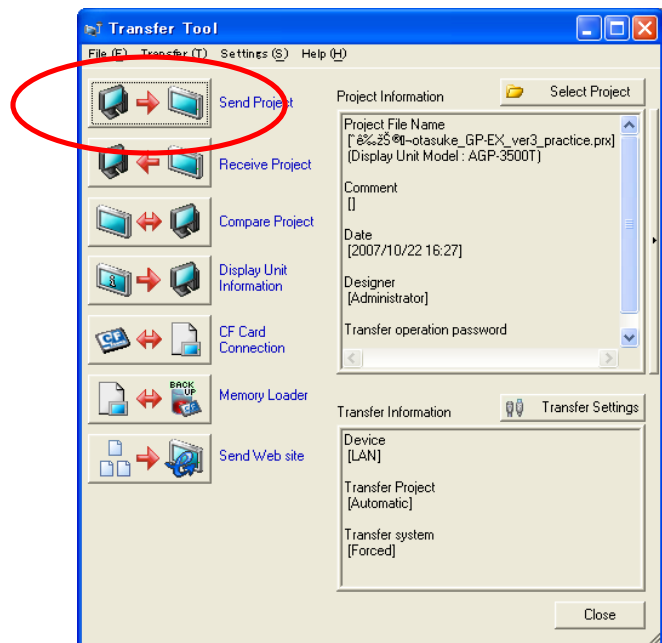
- 1) In the [Common Settings] window, select [Set Password].
Or click the [Set Password]  icon on the tool bar.



- 2) Check [Set up Functions at Each Security Level] and set security levels for each of the GP-Viewer functions.



- 3) Save the project file and transfer it to the GP.



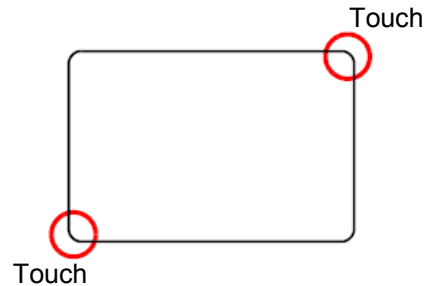


Instruction

Set License on GP Unit

License Setup Procedure

- 1) Enter the offline mode on the GP display.
Touch the top right corner first and then the bottom left corner within 0.5 second. The system menu will appear on the bottom of the GP display.

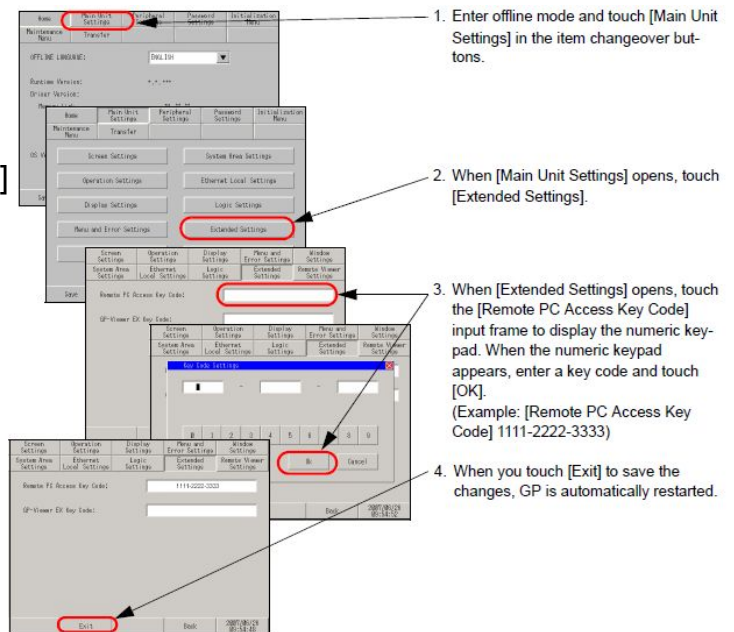


- 2) Touch [Offline].



- 3) Select [Main Unit Settings] → [Extended Settings].

Touch the [GP-Viewer EX Key Code] entry field and enter the key code. Touch [OK] to complete entering.

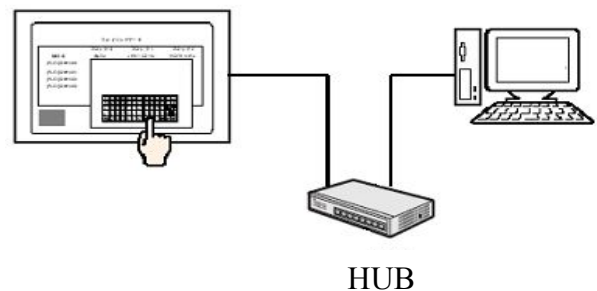


1. Enter offline mode and touch [Main Unit Settings] in the item changeover buttons.
2. When [Main Unit Settings] opens, touch [Extended Settings].
3. When [Extended Settings] opens, touch the [Remote PC Access Key Code] input frame to display the numeric keypad. When the numeric keypad appears, enter a key code and touch [OK]. (Example: [Remote PC Access Key Code] 1111-2222-3333)
4. When you touch [Exit] to save the changes, GP is automatically restarted.

- 4) Touch [Exit] to return to the online mode.

- 5) Connect the GP unit and the computer using a hub and LAN cables.

* To communicate by Ethernet connection, it is necessary to make Ethernet settings (IP address, port number, etc.) on the GP unit.



★ One Point

Make IP address settings in the offline mode on the GP unit.

1. Enter offline mode and touch [Main Unit Settings] in the item changeover buttons.
2. When the [Main Unit Settings] screen opens, touch [Ethernet Local Settings].
3. The [Ethernet Local Settings] screen opens. Touch the IP address input field to display the numeric touch keys and then enter an IP address (Example: 192.168.0.1). For the IP address setting method, consult the network administrator.
4. Specify [Subnet Mask], [Port]¹⁾, and [Gateway] using the same procedure.
 1. The port No. specified here is the one used for setup via Ethernet, for the transfer of project files, and for communication when Pro-Server EX is used. Do not change it from the initial value [8000].
5. Touch [Exit] and save the change. The GP restarts automatically.



Instruction

Install GP-Viewer EX

Install GP-Viewer EX

To install GP-Viewer EX on the computer, use the installation CD-ROM, GP-Pro EX Version 2.10 or higher, or download the installer from our homepage.

See GP-Pro EX Reference Manual

36.5 "Using GP-Viewer EX to Display and Operate with Data from Display Units"

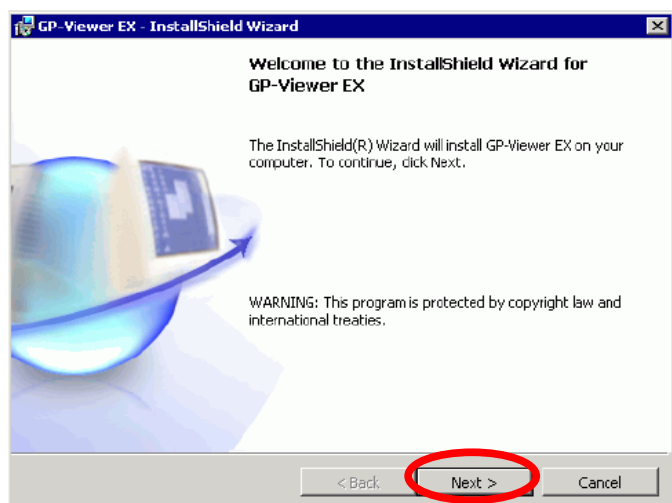
<1. Install from CD-ROM, GP-Pro EX Version 2.10 or higher>

- 1) Insert CD-ROM (Disk 2) of GP-Pro EX in the CD-ROM drive.

The GP-Pro EX set up menu screen will appear. Select [GP-Viewer EX].

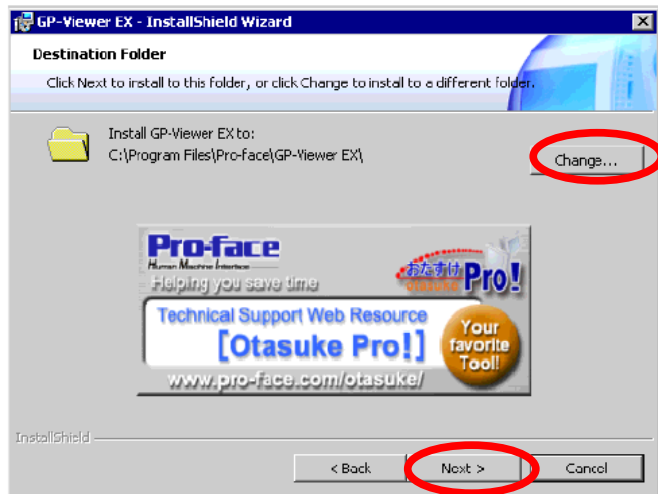


- 2) Follow the instructions in the install wizard.

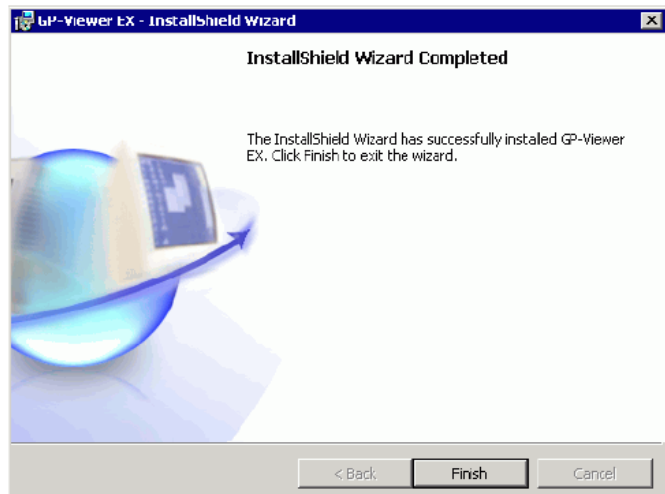


- 3) To specify the destination folder to install in, click [Change] and define the folder path within 80 characters.

Click [OK] to go to the next step.



- 4) The message window will appear. Click [OK] to complete the installation.



<2. Download and Install from Website>

- 1) Download from our homepage "Otasuke Pro!".
(<http://www.proface.co.jp/otasuke/>)
- 2) Double-click the downloaded file. In the confirmation message box, click [RUN].
- 3) Follow instructions in the install wizard.

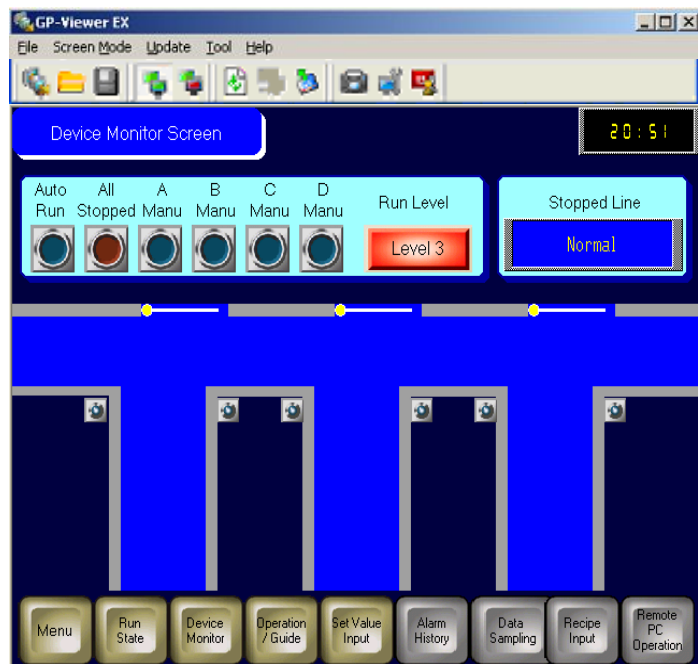
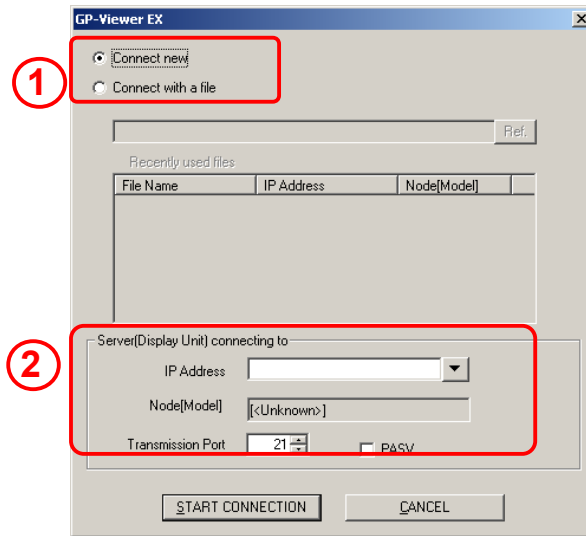


Instruction

Start GP-Viewer EX

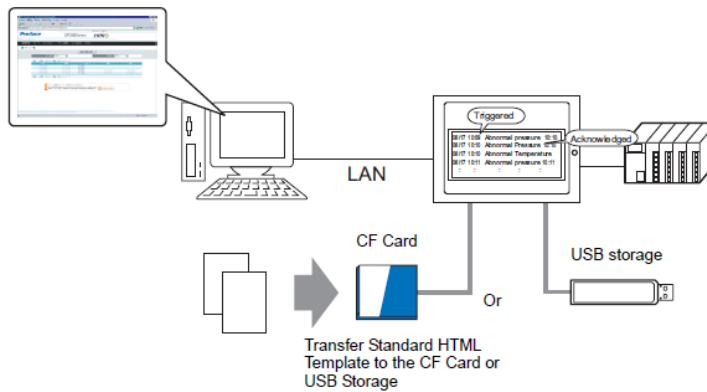
Start GP-Viewer EX

- 1) Start up GP-Viewer EX.
Here, select [Connect new].
- 2) Specify an IP address of the GP unit to display.
- 3) You can check or operate GP screens on the computer screen.

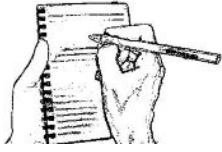


**One Point****Web Server**

Web Server allows information of alarms and device addresses to be displayed in Internet Explorer. You can also access files in a CF card or a USB memory.



For details of Web Server, see GP-Pro EX Reference Manual
Chapter 36 “Use the Computer to Display and Operate GP Data”



MEMO