

Chapter 10

Remote PC Operation Screen (RPA)

Chapter 10 Remote PC Operation Screen

10. 1	Remote PC Operation Screen (RPA)	
	Remote PC Operation Screen (RPA)	10-3
10. 2	Virtual Network Computing (VNC)	
	Virtual Network Computing (VNC)	10-7
10. 3	Server (VNC) Setup	
	Set up Server (VNC)	10-9
	[Practice] Remote PC Access	10-13
10. 4	Client Setup	
	Set Key Code	10-17
	[Practice] Let's Set RPA	10-19
	[Practice] Let's Transfer Data to GP and Check Performance	10-24

10. 1

Remote PC Operation Screen (RPA)



Instruction

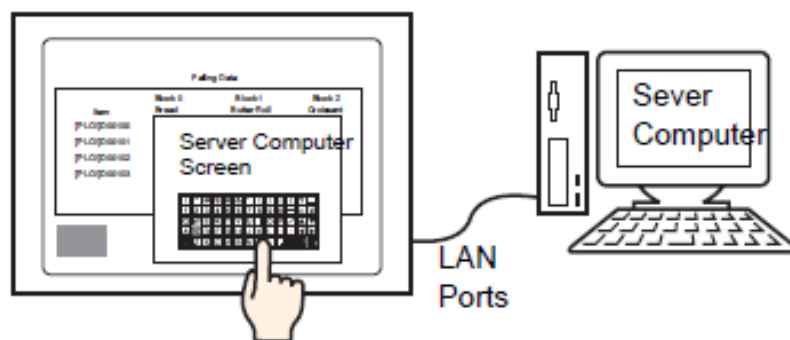
Remote PC Operation Screen (RPA)

Remote PC Operation Screen (RPA)

The remote PC operation screen is using the RPA feature that allows you to display and operate PC screens on the GP screen via the network.

You can operate applications on a remote PC, or refer to manuals saved in a PC.

To use this function, Virtual Network Computing (VNC) has to be installed in the PC.



If you convert the necessary data to PDF format beforehand, it is easier to refer to the data afterward.

See → GP-Pro EX Reference Manual “35.1.1 ■ Remote PC Access (RPA)”



IMPORTANT

Key code (License)

To use the RPA function, a separate key code (Type: EX-RPA) is required for each display unit.

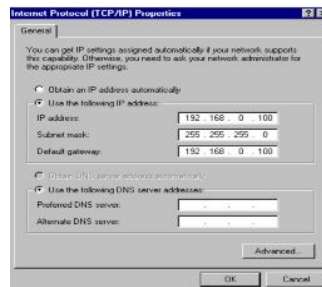
The key code cannot be reissued even if lost. Please keep it securely.

Setup Procedure

1. Set VNC on a server computer.
(See page 10-8)



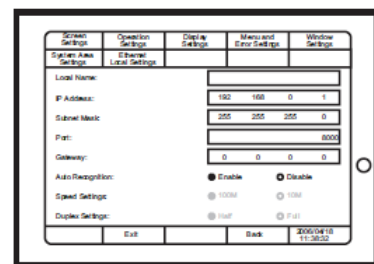
2. Set the IP address on the computer.
(Computer network connection)



3. Enter the key code in the Offline Mode on the GP unit.
(See page 10-16)

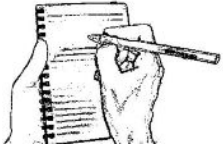


4. Set the IP address in the Offline Mode on the GP unit.
(See page 10-17.)



5. Place an RPA window on a base screen.
(See page 10-18.)





MEMO

10.2

Virtual Network Computing (VNC)



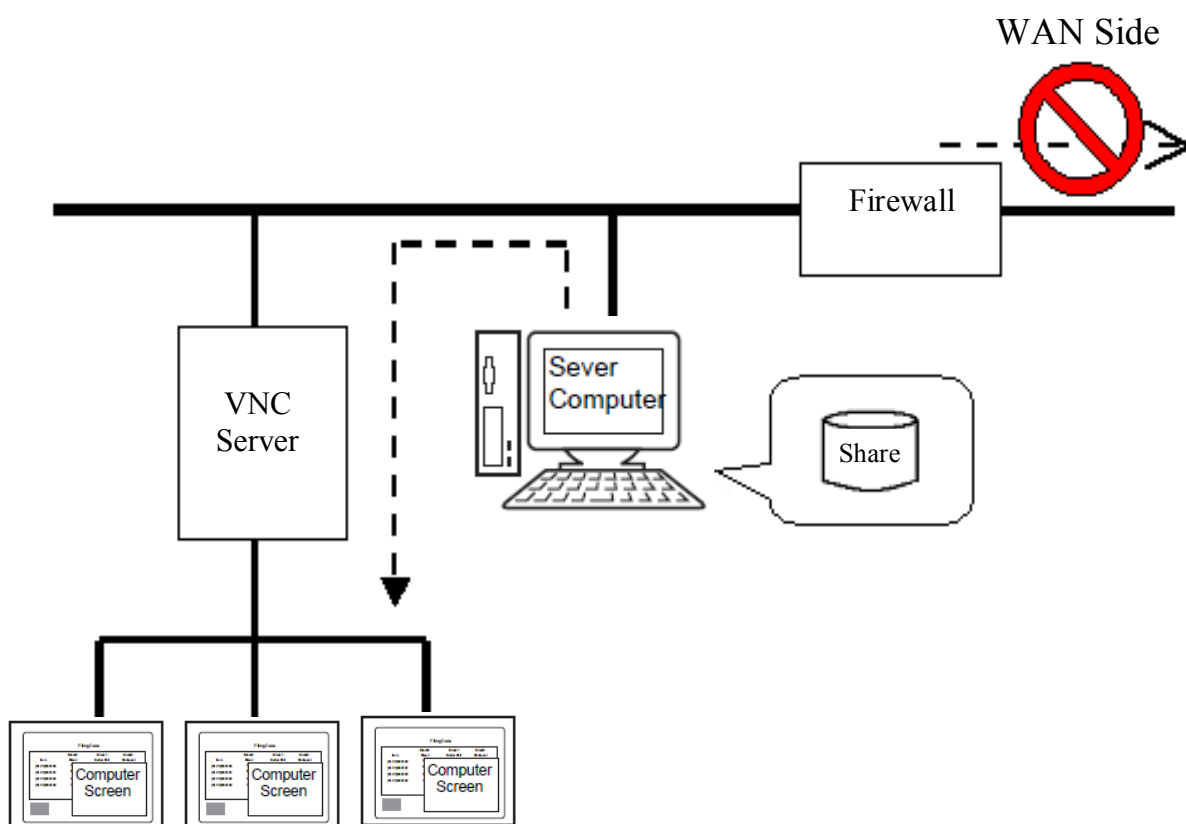
Instruction

Virtual Network Computing (VNC)

To use the RPA feature, use software called Ultra VNC, which is free software (*). It allows a client to control screens on the server remotely. Here in this practice, the computer is regarded as a VNC server and the GP unit as a VNC client.

* The client license on the GP unit is chargeable.

Reference → <http://ultravnc.sourceforge.net/>



Note

- Create a fully reliable environment to enhance security.
- The display or performance of the GP unit may be slow depending on the network environment.
- The connection between a GP and a PC is only enabled via LAN.
- Firewall prevents access when connecting multiple networks via a router.
- The performance of the server computer decrease by 10 to 30% when performing the RPA function.

10.3

Server (VNC) Setup



Instruction

Set Up Server (VNC)

VNC Setup Procedure

This chapter explains how to set up the computer (VNC Server), whose screens are to be displayed on the GP screen.

Install Ultra VNC from the folder, mentioned below, in the CD-ROM of GP-Pro EX.

\RPA\UltraVNC\UltraVNC_102_Setup.exe

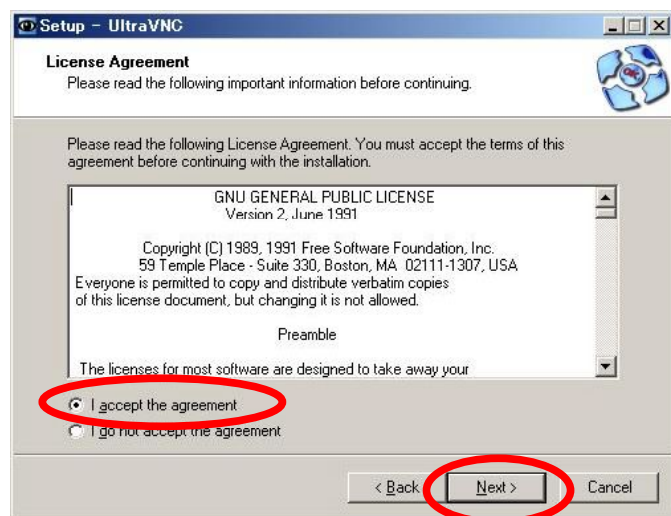
See GP-Pro EX Reference Manual “35.3.2 Setup Procedure”

• Procedure of Installation

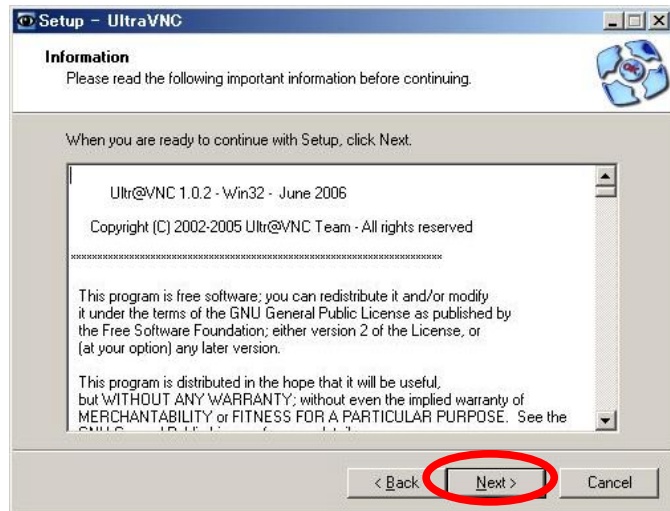
- 1) Install UltraVNC from the above mentioned folder.
Double-click the icon and click [Next] in the Setup-UltraVNC window.



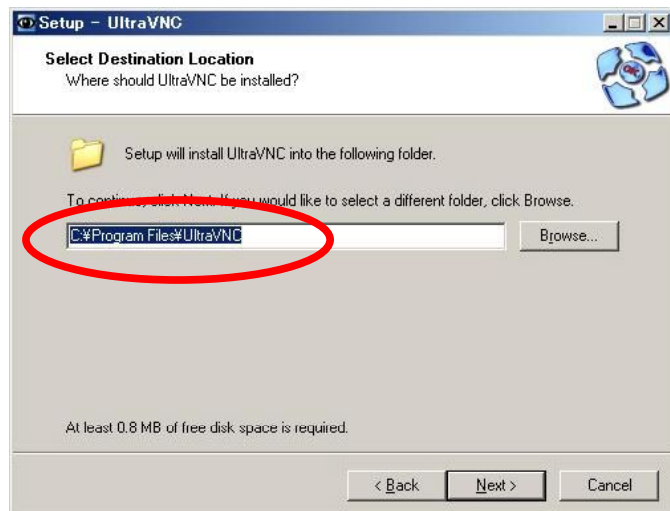
- 2) Check [I accept the agreement] and click [Next].



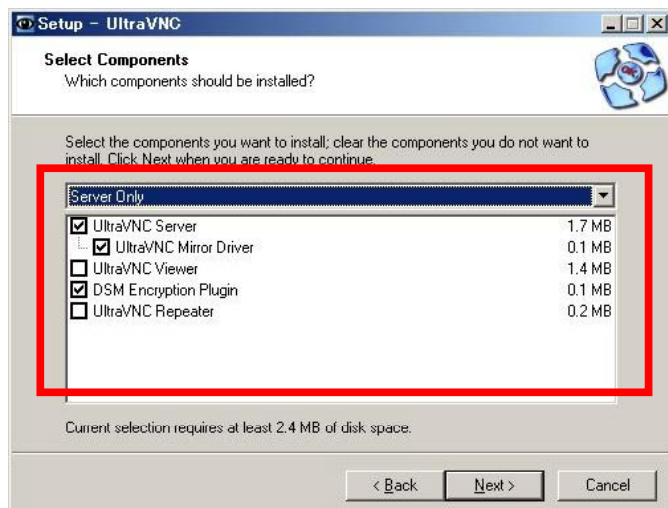
3) Click [Next].



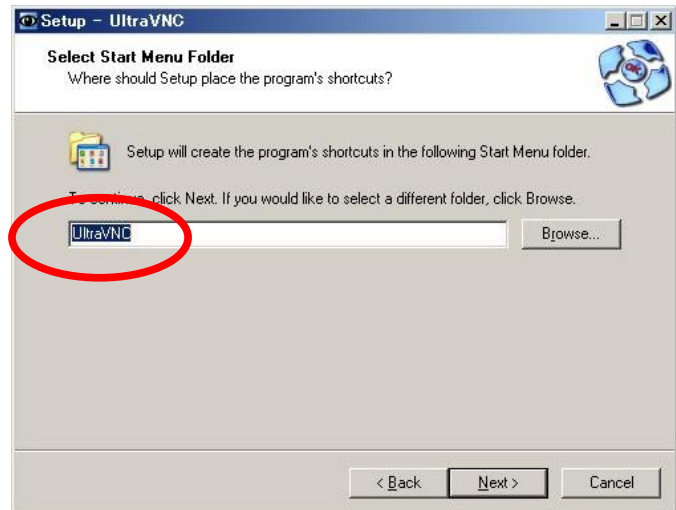
4) Specify a folder to install the software into. It is necessary to change the default folder.



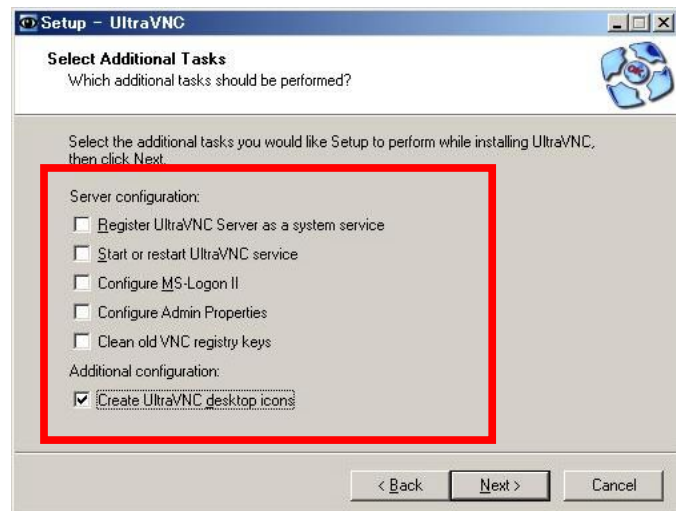
5) Select components to install. Select [Server Only] from the pull-down menu.



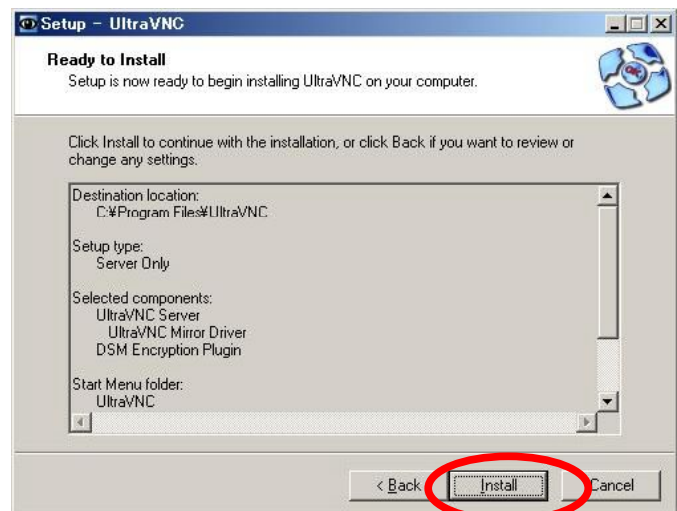
- 6) Specify a name to be registered in the Start menu. It is not necessary to change the name.



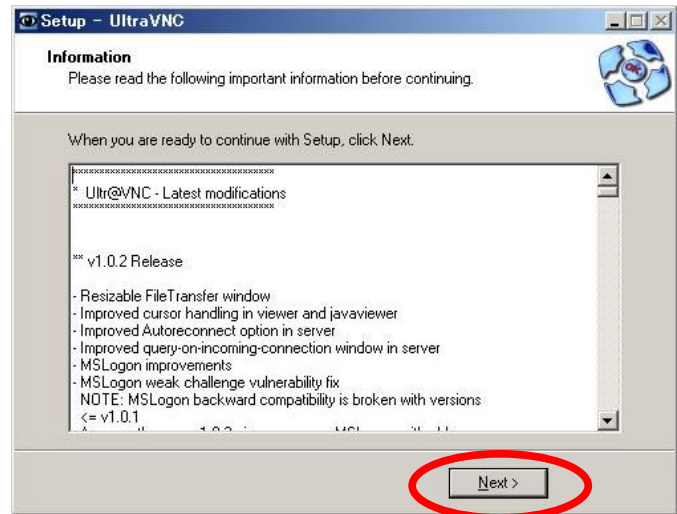
- 7) Select additional tasks such as program icon registration. It is not necessary to check any boxes here.



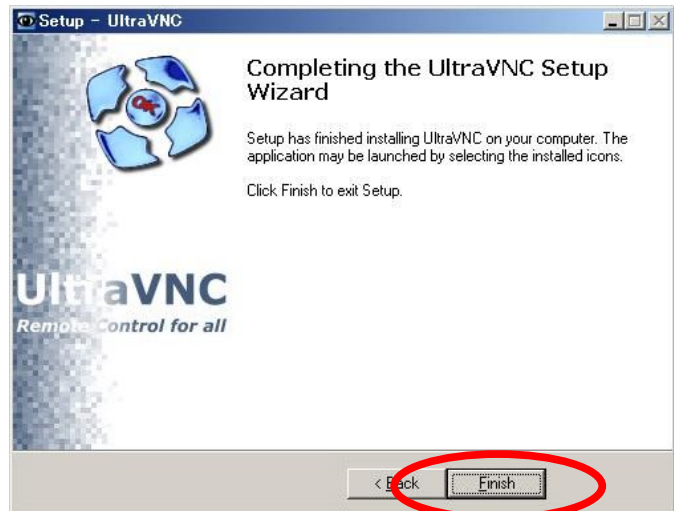
- 8) Click [Install].



9) Click [Next].



10) Click [Finish] to complete the installation.





Remote PC Access

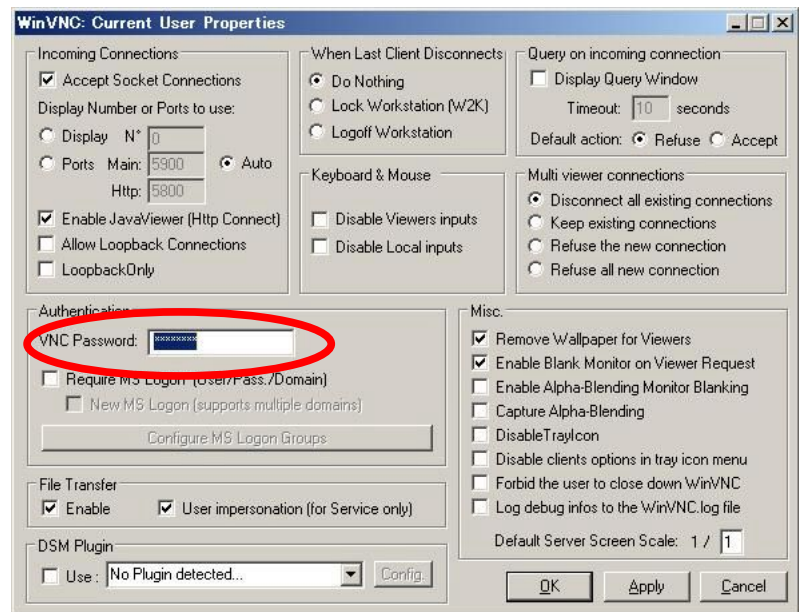
(1) Start up UltraVNC

1) Use the [Start] menu or the shortcut icon to start UltraVNC.

2) In the WinVNC Current User Properties dialog box, set the [VNC Password] within 30 characters in the [Authentication] area.

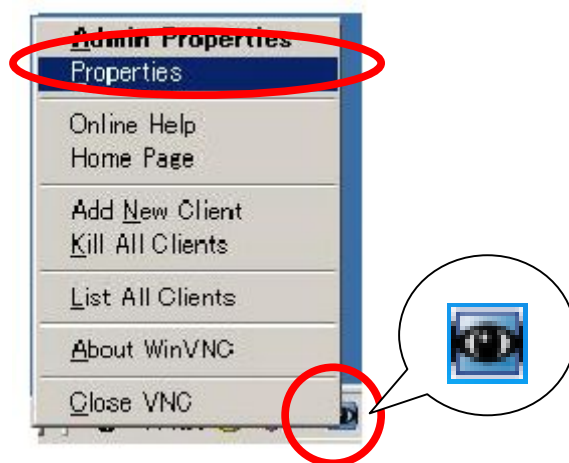
Password must be set. Please keep your password in a secure place for your future reference.

As for other items, it is not necessary to change. Click [OK] to finish the settings.



(2) Set UltraVNC after Startup

1) After starting up, right-click the UltraVNC icon shown on the task tray and select [Properties]. UltraVNC will open.

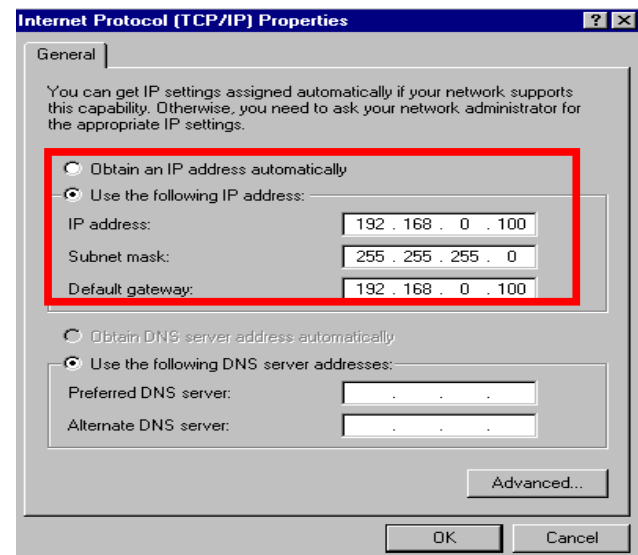


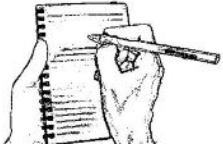
- 2) The WinVNC: Current User Properties window will open. Uncheck [Video Hook Driver] and leave other items.



- 3) Change the IP address of the PC as necessary. In case to connect the RPA to the company network, please check with your network administrator.

Also, set [Default gateway] on the computer. If you have not set a gateway, enter the IP address of the computer.





MEMO

10.4

Client Setup

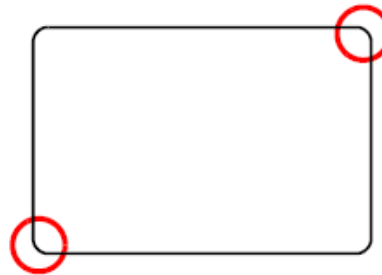


Set Key Code

Instruction

Key Code Setup Procedure

- 1) Enter the offline mode on the GP unit.
Touch the top right corner first then the bottom left corner within 0.5 second.
The system menu will appear on the bottom of the GP display.



- 2) Touch [Offline].



- 3) Select [Main Unit Settings] → [Extended Settings].

Touch the [Remote PC Access Key Code] entry field and enter the key code. Touch [OK] to complete entering. Once you enter the key code, it is not necessary to enter it again.

1. Enter offline mode and touch [Main Unit Settings] in the item changeover buttons.
2. When [Main Unit Settings] opens, touch [Extended Settings].
3. When [Extended Settings] opens, touch the [Remote PC Access Key Code] input frame to display the numeric keypad. When the numeric keypad appears, enter a key code and touch [OK]. (Example: [Remote PC Access Key Code] 1111-2222-3333)
4. When you touch [Exit] to save the changes, GP is automatically restarted.

- 4) Touch [Exit] to return to the online mode.

★ One Point

Make IP address settings in the offline mode on the GP unit.

1. Enter offline mode and touch [Main Unit Settings] in the item changeover buttons.
2. When the [Main Unit Settings] screen opens, touch [Ethernet Local Settings].
3. The [Ethernet Local Settings] screen opens. Touch the IP address input field to display the numeric touch keys and then enter an IP address (Example: 192.168.0.1). For the IP address setting method, consult the network administrator.
4. Specify [Subnet Mask], [Port]¹⁾, and [Gateway] using the same procedure.
 1. The port No. specified here is the one used for setup via Ethernet, for the transfer of project files, and for communication when Pro-Server EX is used. Do not change it from the initial value [8000].
5. Touch [Exit] and save the change. The GP restarts automatically.

Note

- You can set only one Remote PC Access Window Display per screen.
- The Remote PC Access Window Display performs only on TFT models in the GP3400 series (7-inch models) or higher.



Let's Set RPA

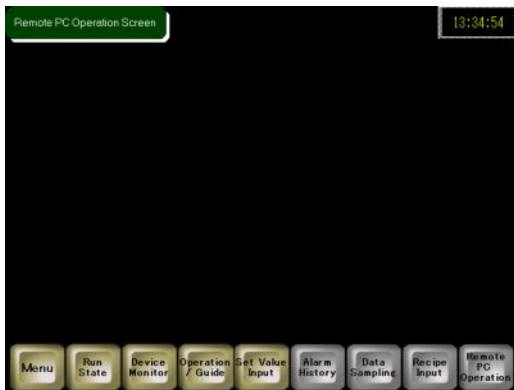
Let's set the RPA function.

[Setup Procedure]

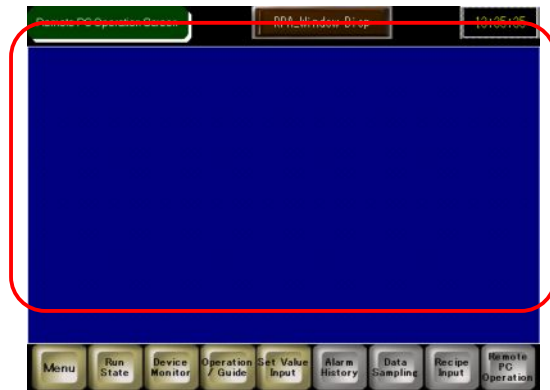
1. Set a Remote PC Access Window Display.
2. Transfer screen data and connect to a computer.

Open the base screen "9".

<Practice Screen>

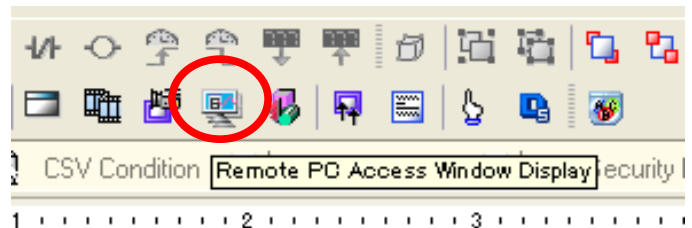


<Completed Screen>



(1) Set RPA Window

- 1) Open the base screen and place a Remote PC Access Window Display in the editing area.



- 2) Double-click the placed Remote PC Access window display and change settings.



<Basic>

Type: Activate Switch

Remote PC Access server address:

Set the same address as that on the VNC server.

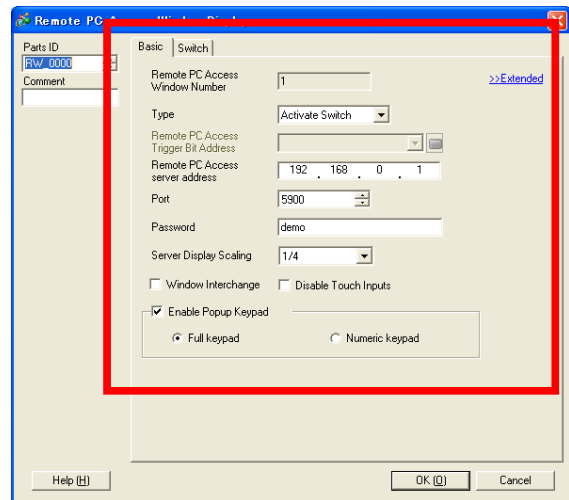
Port: 5900 (Not related to the port number for the Ethernet settings on the GP unit)

Password: Set the same password as [VNC Password] that you have set in the Win VNC Current User Properties dialog box.

See page 10-13 “Start Ultra VNC”.

Server Display Scale: Arbitrary

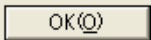
(Here, select “1/4”, which reduces both of the length and breadth to half of the PC screen.)

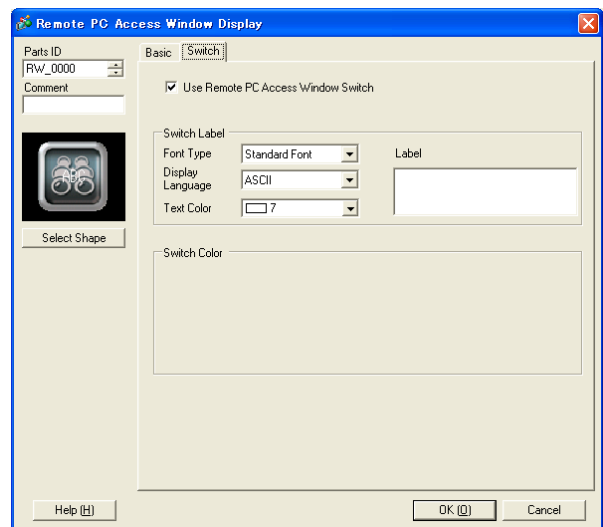


<Switch>

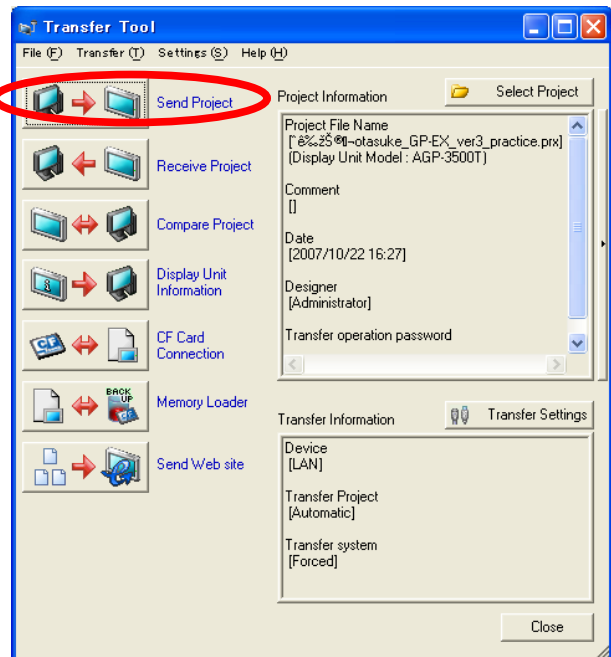
Check [Use Remote PC Access Window Switch].

Select a desired shape of the switch.

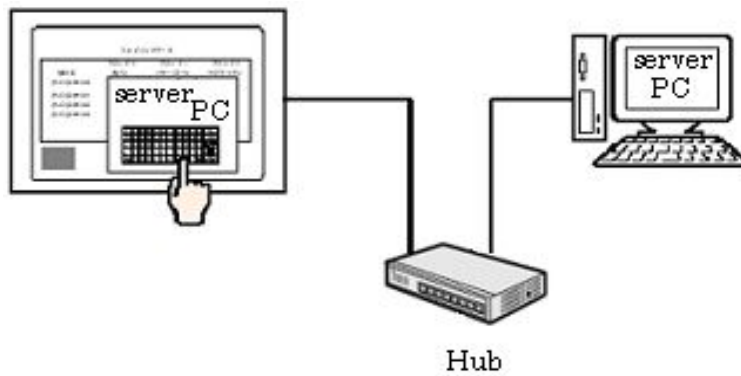
Click  to finish the settings and adjust the position of the display window.



- 3) Save the project file under an arbitrary file name and transfer it to the GP.



- 4) Connect the GP and the computer via cable and hub.

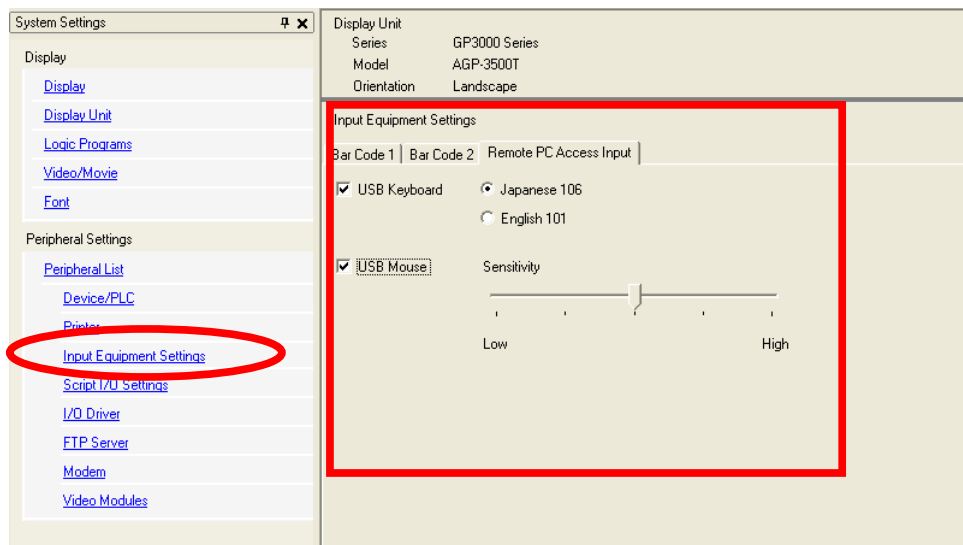


**One Point**

You can also operate the server computer screens on the GP screen by a mouse or a keyboard connected to the USB port on the GP unit.

See GP-Pro EX Reference Manual
“35-3 Display/Operate the computer screen on the GP”

Change settings on the System Settings window.

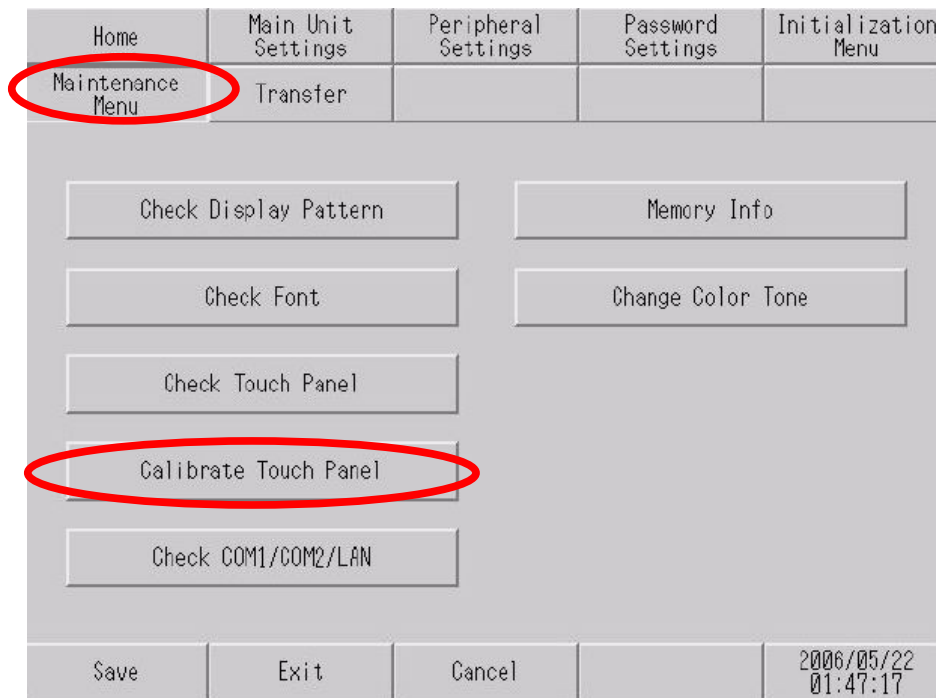


 **One Point**

You can set the calibration of the display panel in the offline mode.

See GP-Pro EX Maintenance/Troubleshooting manual

“2.8.1 Checking whether the Display is operating properly ■ Calibration Touch Panel”

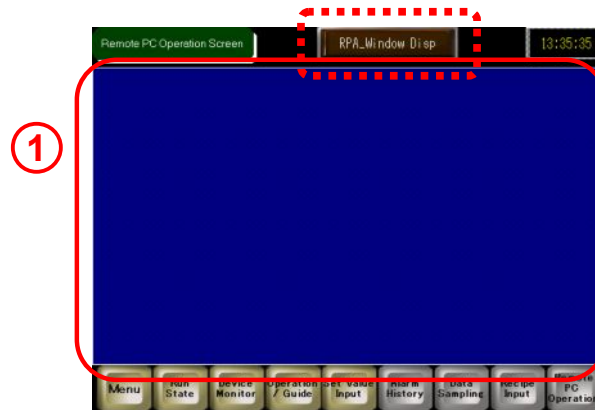




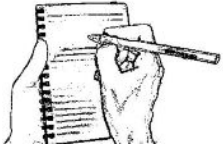
Practice

Let's Transfer Data to GP and Check Performance

<Completed Screen>



- 1) Display the computer screen on the GP screen by touching the switch.



MEMO